

National Elk Refuge NWR

Teton County Weed and Pest District Contract

Accomplishments

Project Total Survey Acres ¹	Project Survey Acres Infested ²	Project Acres Treated ³
4,093.68	~	100+
¹ Area covered during the course of weed management activities regardless of presence or absence of target weed species as measured by perimeter in GIS. ² Area occupied by weed species within the survey area that does not contain the space between individuals or populations (i.e. net infestation size) as measured by GPS feature for monitoring and treatment combined, but areas in common not additive. ³ The area or subset of infested area that has received some form of treatment as measured by GPS feature.		

Highlights

Coordination and Cooperation

- Mountain-Prairie Region Invasive Species Coordinator Lindy Garner coordinated with Erika Edmiston of Teton County Weed and Pest District (TWCP) to develop a cooperative agreement for early detection and rapid response work on the National Elk Refuge.
 - Through this coordination a \$28,000 cooperative agreement contract was developed for invasive species management at the refuge. Of this amount, ISST contributed \$13,000 and the refuge contributed \$15,000.
 - Money from this agreement primarily covered costs of the spray crews.
- TWCP staff coordinated directly with personnel from the National Elk Refuge for treatment priorities, transportation and equipment needs. The county also provided additional crews, equipment and support needed for large scale projects.
 - The field season extended from May through September and upon completion the 2013 *Noxious Weed Performance Report* was prepared (Appendix A).
- ISST also contributed \$10, 000 toward a Challenge Cost Share Agreement with Jackson Hole Trout Unlimited for mapping and removal of reed canary grass (*Phalaris arundinaceae*).
 - This project is located on the refuge in Flat Creek where stream restoration efforts are in place to improve fish habitat for cutthroat trout.

Prevention and Education

- Providing support through funding, partnerships and agreements helps to facilitate treatment, education and curb the spread to weeds across the landscape.

Early Detection and Rapid Response

- Early detection and rapid response treatment of weeds is critical to keep large tracts of land free of invasive and noxious species that degrade wildlife habitat.

Inventory and Monitoring

- GPS tracklogs were collected by TWCP crews to map areas covered during the field season. The tracklog shapefile were provided to ISST at the end of the field season and were used to calculate the estimated survey area acres.
 - The spray crews surveyed approximately 4,093.68 acres during the 2013 season.

Management

- Based on the *Performance Report* (Appendix A), the refuge goals and objectives for weed treatments in 2013 were met through a combination of regular program funds, grants and spray days.
- Project leaders estimate crews completed over 100 acres of treatment this season.

Proposed 2014 Schedule

- Agreements and partnerships should continue to play a significant role in weed management on the refuge.

USFWS (National Elk Refuge) – 2013 Noxious Weed Performance Report

Project Goals & Objectives: Teton County Weed and Pest Control District (TCWP) will perform noxious weed treatment, surveys, mapping and biocontrol programs on the National Elk Refuge during the season. The National Elk Refuge is a partner in the Jackson Hole Weed Management Association (JHWMA) and the District will work to include the Refuge in all projects and programs involving the JHWMA. Approximately 100 acres will be treated for State Designated and County Declared Species and 2,500+ acres will be monitored and/or mapped.

Progress Report: All goals and objectives for the National Elk Refuge were met during the 2013 season. The Refuge provided transportation and spray equipment for staff hired by TCWP specifically for NER noxious weed control for the summer. Occasionally, TCWP also provided extra crews and equipment as needed for large scale projects. JHWMA partners, including Grand Teton National Park, Bridger Teton National Forest and TCWP, combined resources for grant projects and cooperative spray days. Details below.

Regular Program Funds (\$28,000 available)

Actual Program Cost: Labor-\$28,697.60 Herbicide-\$335.35
20.6 Acres of Herbicide Applied

Wyoming Wildlife & Natural Resource Trust Fund Grant- Cheatgrass (JHWMA-wide project)

In progress fall 2013, no totals available at this time but will be similar to 2012 amounts.

JHWMA Gros Ventre River Spray Days (cooperative spray days donated by JHWMA partners)

Project Funds on Refuge: Labor-\$8,763.75 Herbicide-\$175.00
15.4 Acres of Herbicide Applied

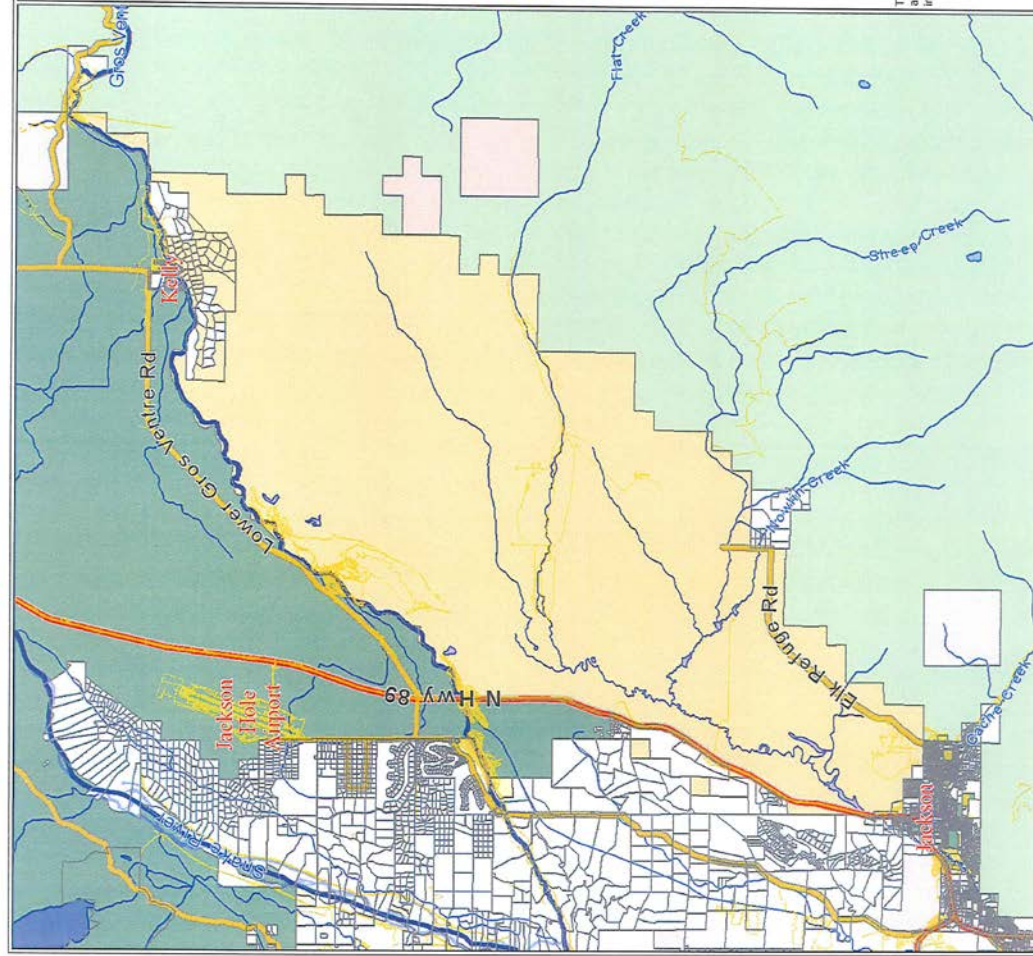
Grand Totals:

Regular Program and Grant Funds Spent on the National Elk Refuge as of 9/25/13.

- Labor \$37,461.35
- Herbicide \$510.35
- Herbicide Applied Acres – 36

9/25/13

Teton County Weed & Pest MapServer



Teton County Wyoming MapServer

National Elk Refuge
2013 Spray Crew Tracks

- 2013 Tracks
- County Road
- Highway
- River, Creeks, Lakes
- BLM
- US Fish & Wildlife Serv
- National Park Service
- US Forest Service
- Wyoming Dept of Trans
- Wyoming Game & Fish
- State of Wyoming



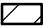

Teton County provides this map for illustrative purposes only and assumes no liability for actions taken by users based on information shown.

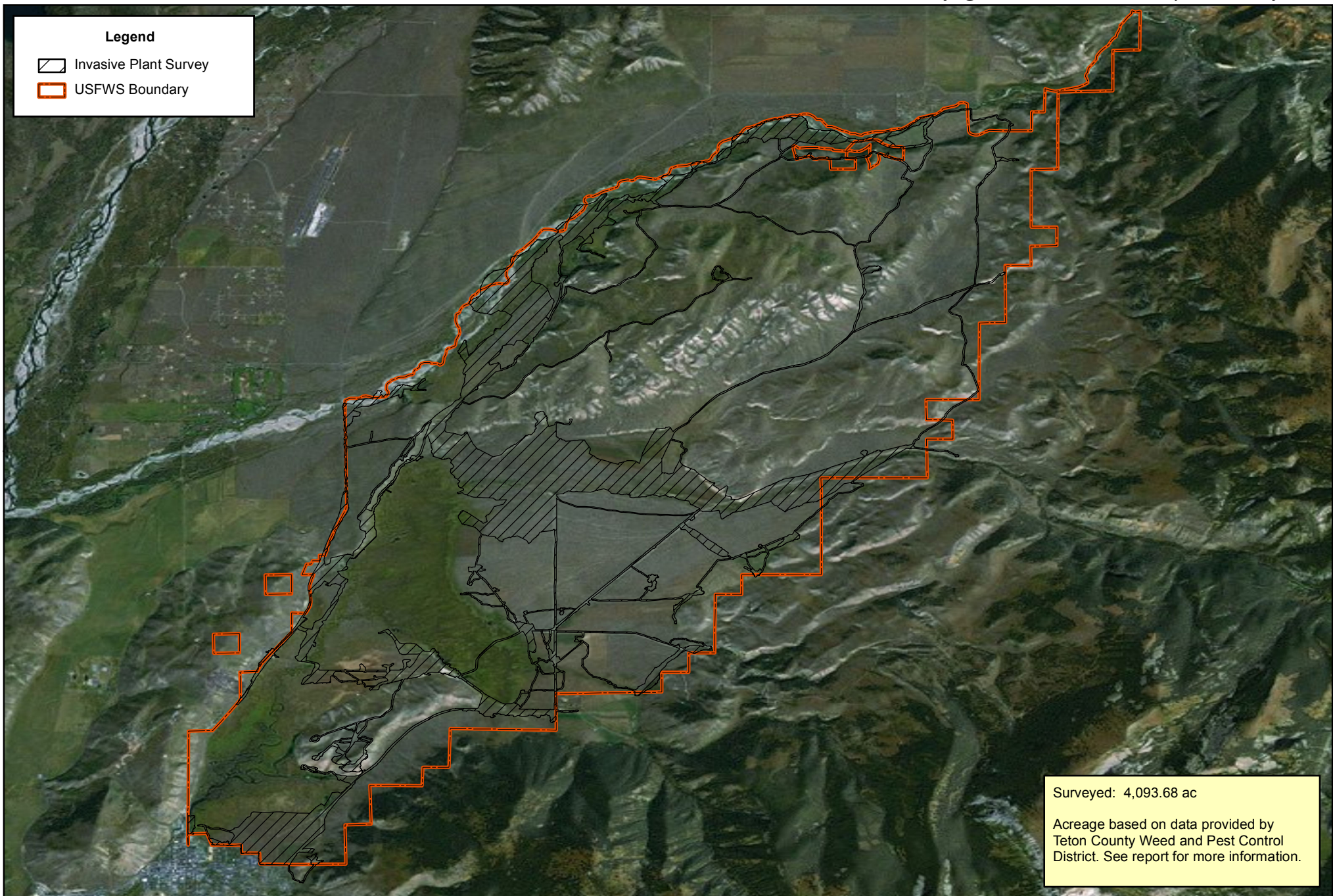
0 1 2 3 mi
9/25/2013

maps.greenwoodmap.com/tetonwy/mapserver/tcxp.html



Legend

-  Invasive Plant Survey
-  USFWS Boundary



Surveyed: 4,093.68 ac

Acreage based on data provided by
Teton County Weed and Pest Control
District. See report for more information.



0 1 2 4 Miles