



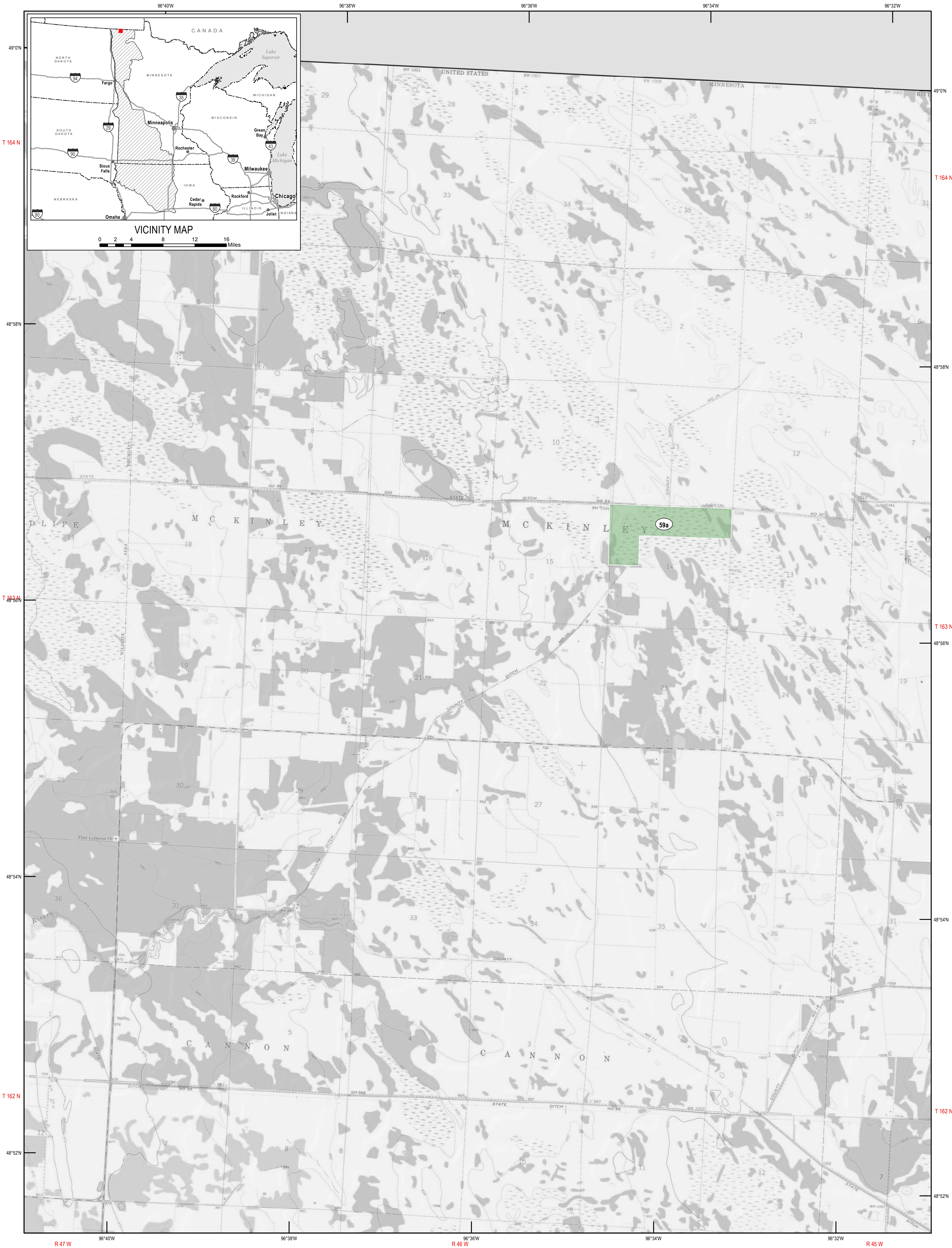
U.S. Fish & Wildlife Service

NORTHERN TALLGRASS PRAIRIE NATIONAL WILDLIFE REFUGE

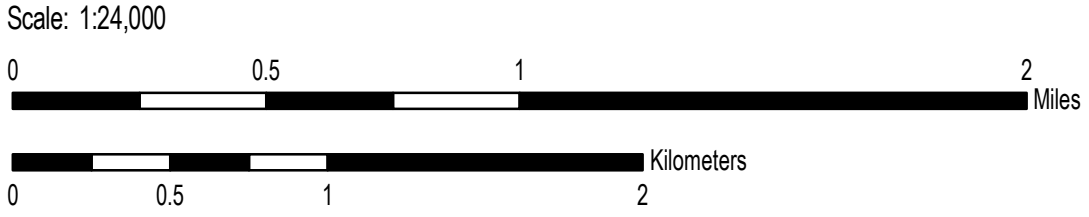
Kittson County, Minnesota

Land Status

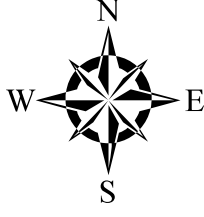
Sheet 6 of 1370



**Notes:**  
Produced in the Division of Realty  
Bloomington, MN  
Land Status Current to: November 30, 2016  
Basemap Source: USGS 1:24,000 Topographic Map (Grayscale)  
Meridian: Fifth Principal  
Datum and Projection: NAD 1983 UTM Zone 15N  
Published Date: 1/23/2017



- Boundaries**
- Approved Boundary - Limited
  - Outgrant/FWS Issued Permit
  - Tract Boundary
  - Special Designation
- Acquired Interest**
- Fee Title
  - Easement/Lease
  - Secondary
  - Agreement
- Tract Number**
- M3 25



Disclaimer: This map depicts lands and waters administered by the U.S. Fish and Wildlife Service (USFWS) in North America, U.S. Trust Territories and Possessions. It may also include inholdings that are not administered by USFWS. The primary source for this information is the USFWS Realty program.