

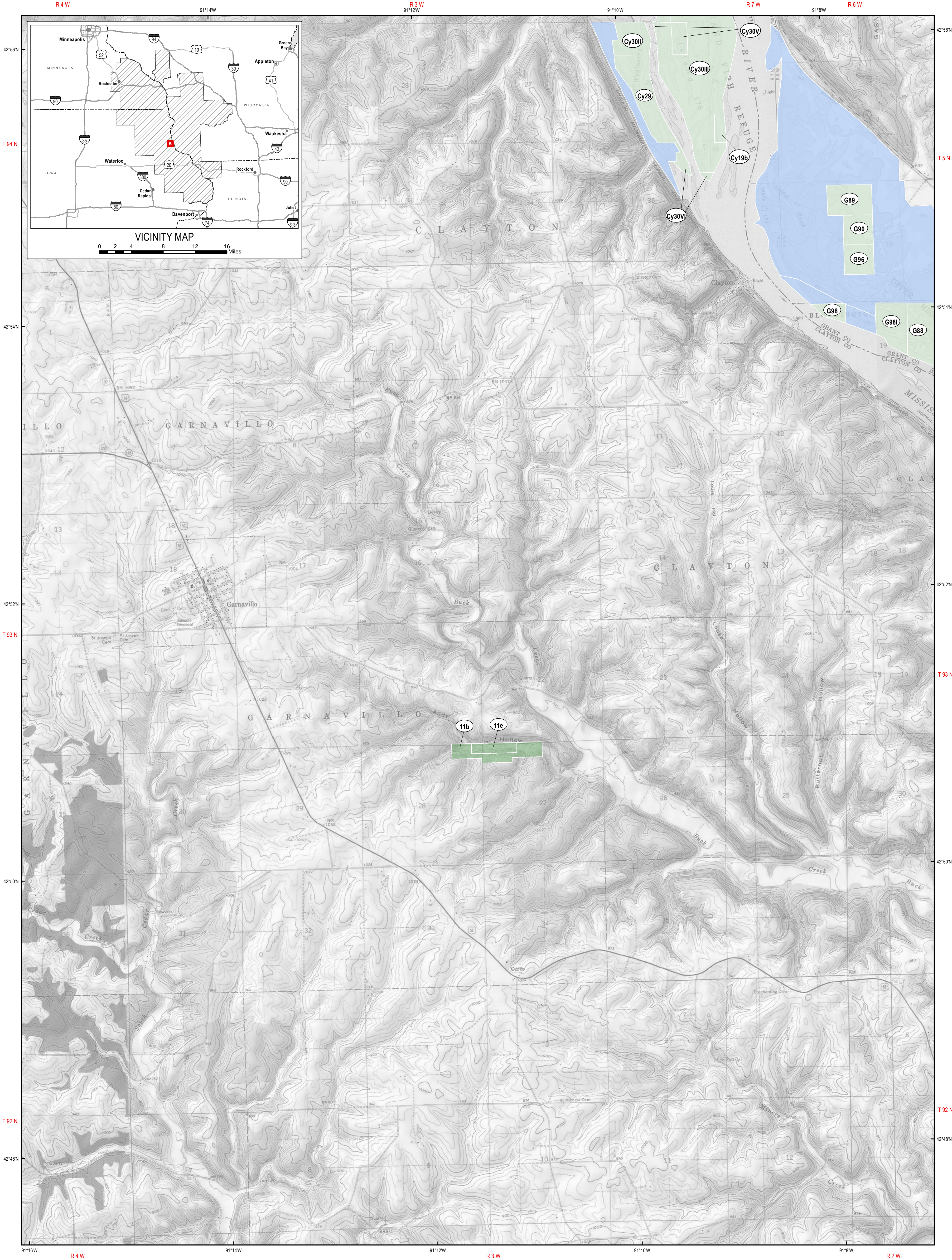


U.S. Fish & Wildlife Service

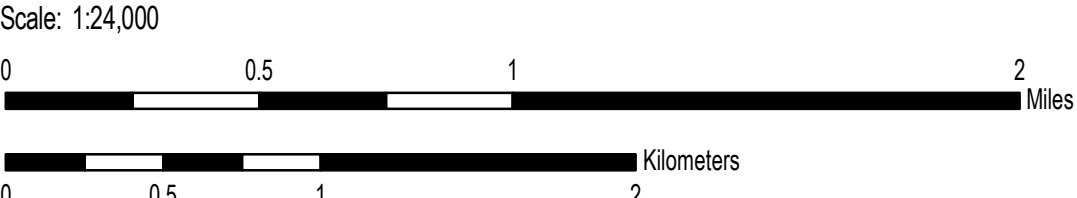
DRIFTLESS AREA NATIONAL WILDLIFE REFUGE

Clayton County, Iowa and Grant County, Wisconsin

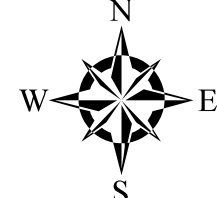
Land Status
Sheet 317 of 463



Notes:
Produced in the Division of Realty
Bloomington, MN
Land Status Current to: November 30, 2016
Basemap Source: USGS 1:24,000 Topographic Map (Grayscale)
Meridian: 4th and 5th Principal Meridian
Datum and Projection: NAD 1983 UTM Zone 15N
Published Date: 2/7/2017



- Boundaries**
- Approved Boundary - Limited
 - Outgrant/FWS Issued Permit
 - Tract Boundary
 - Special Designation
- Acquired Interest**
- Fee Title
 - Easement/Lease
 - Secondary
 - Agreement
- Tract Number**
- (M3) (28)



Disclaimer: This map depicts lands and waters administered by the U.S. Fish and Wildlife Service (USFWS) in North America, U.S. Trust Territories and Possessions. It may also include inholdings that are not administered by USFWS. The primary source for this information is the USFWS Realty program.