



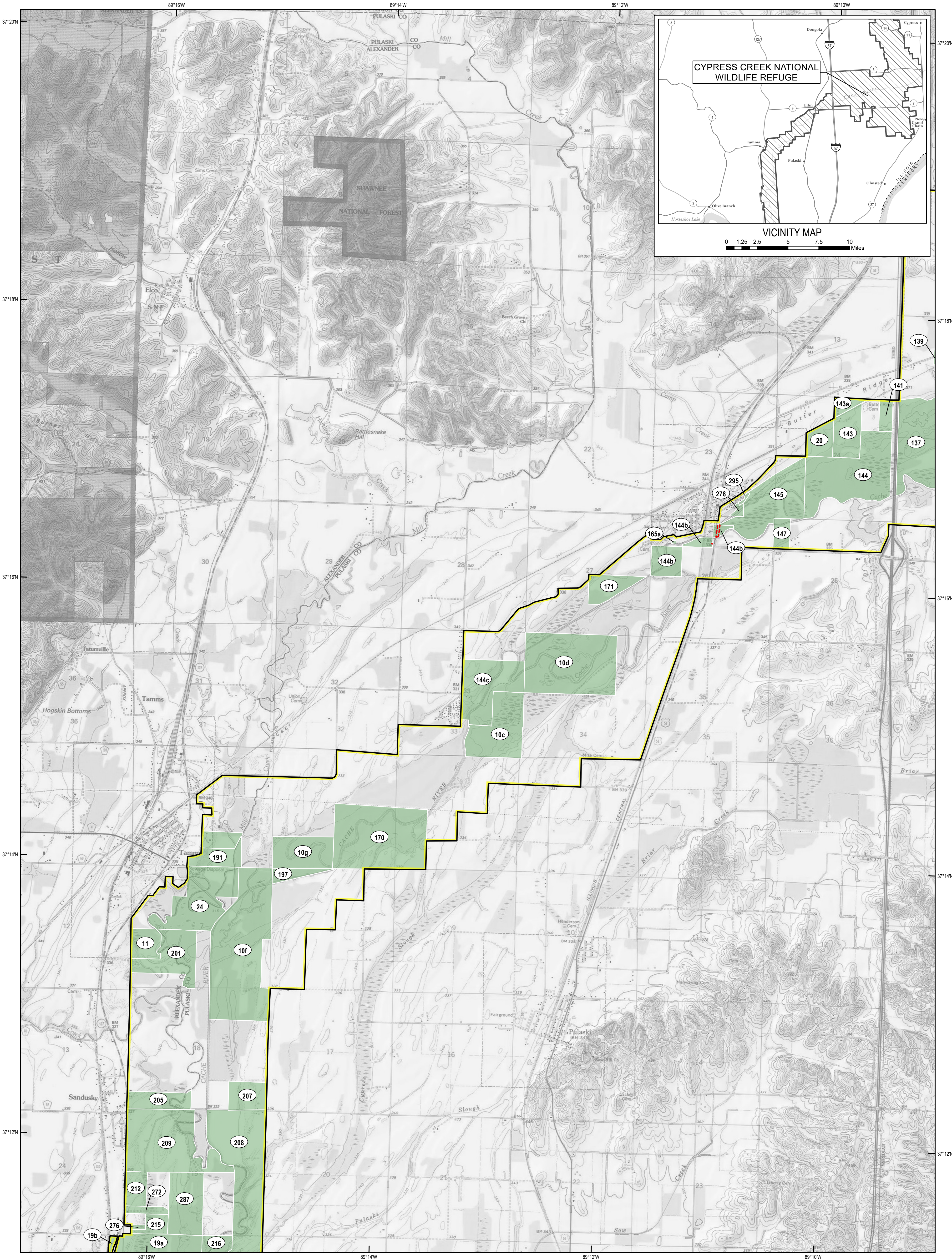
U.S. Fish & Wildlife Service

# CYPRESS CREEK NATIONAL WILDLIFE REFUGE

Alexander and Pulaski Counties, Illinois

Land Status

Sheet 3 of 4

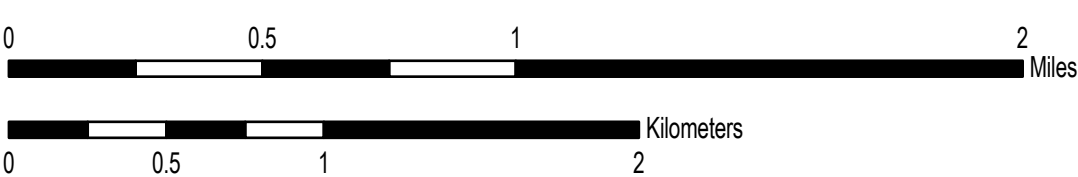


**Notes:**  
Produced in the Division of Realty  
Bloomington, MN  
Land Status Current to: August 31, 2017  
Basemap Source: USGS 1:24,000 Topographic Map (Grayscale)  
Meridian: 3rd Principal Meridian  
Datum and Projection: GCS North American 1983 UTM Zone 16S (Calculated)  
Published Date: 11/8/2017

#### Regional Locator



Scale 1:24,000



#### Boundaries

- Approved Boundary - Inclusive
- Approved Boundary - Limited
- Outgrant/FWS Issued Permit
- Tract Boundary
- Special Designation

#### Acquired Interest

- Fee Title
- Easement/Lease
- Secondary
- Agreement
- Tract Number

Disclaimer: This map depicts lands and waters administered by the U.S. Fish and Wildlife Service (USFWS) in North America, U.S. Trust Territories and Possessions. It may also include inholdings that are not administered by USFWS. The primary source for this information is the USFWS Realty program.