



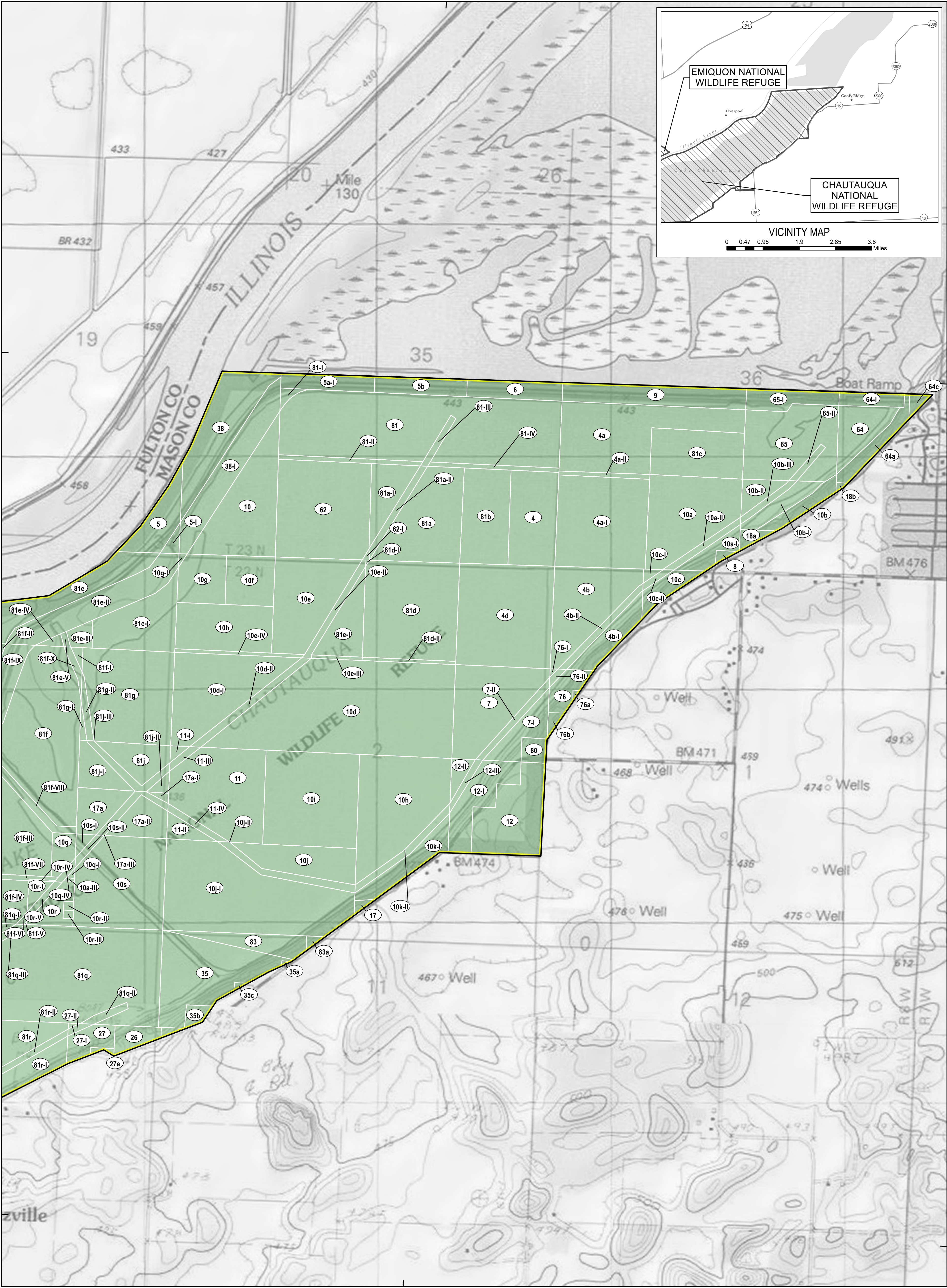
U.S. Fish & Wildlife Service

CHAUTAUQUA NATIONAL WILDLIFE REFUGE

Mason County, Illinois

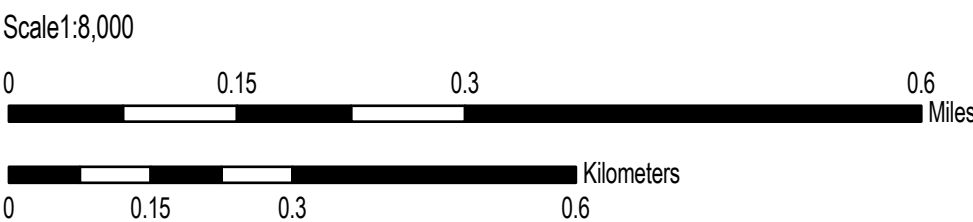
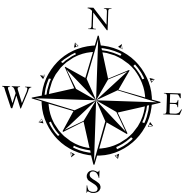
Land Status

Sheet 2 of 4



Notes:
Produced in the Division of Realty
Bloomington, MN
Land Status Current to: August 31, 2017
Basemap Source: USGS 1:24,000 Topographic Map (Grayscale)
Meridian: 3rd Principal Meridian
Datum and Projection: GCS North American 1983 UTM Zone 16T (Calculated)
Published Date: 11/29/2017

Regional Locator



Boundaries

- Approved Boundary - Inclusive
- Approved Boundary - Limited
- Outgrant/FWS Issued Permit
- Tract Boundary
- Special Designation

Acquired Interest

- Fee Title
- Easement/Lease
- Secondary
- Agreement
- M3 28 Tract Number

Disclaimer: This map depicts lands and waters administered by the U.S. Fish and Wildlife Service (USFWS) in North America, U.S. Trust Territories and Possessions. It may also include inholdings that are not administered by USFWS. The primary source for this information is the USFWS Realty program.