



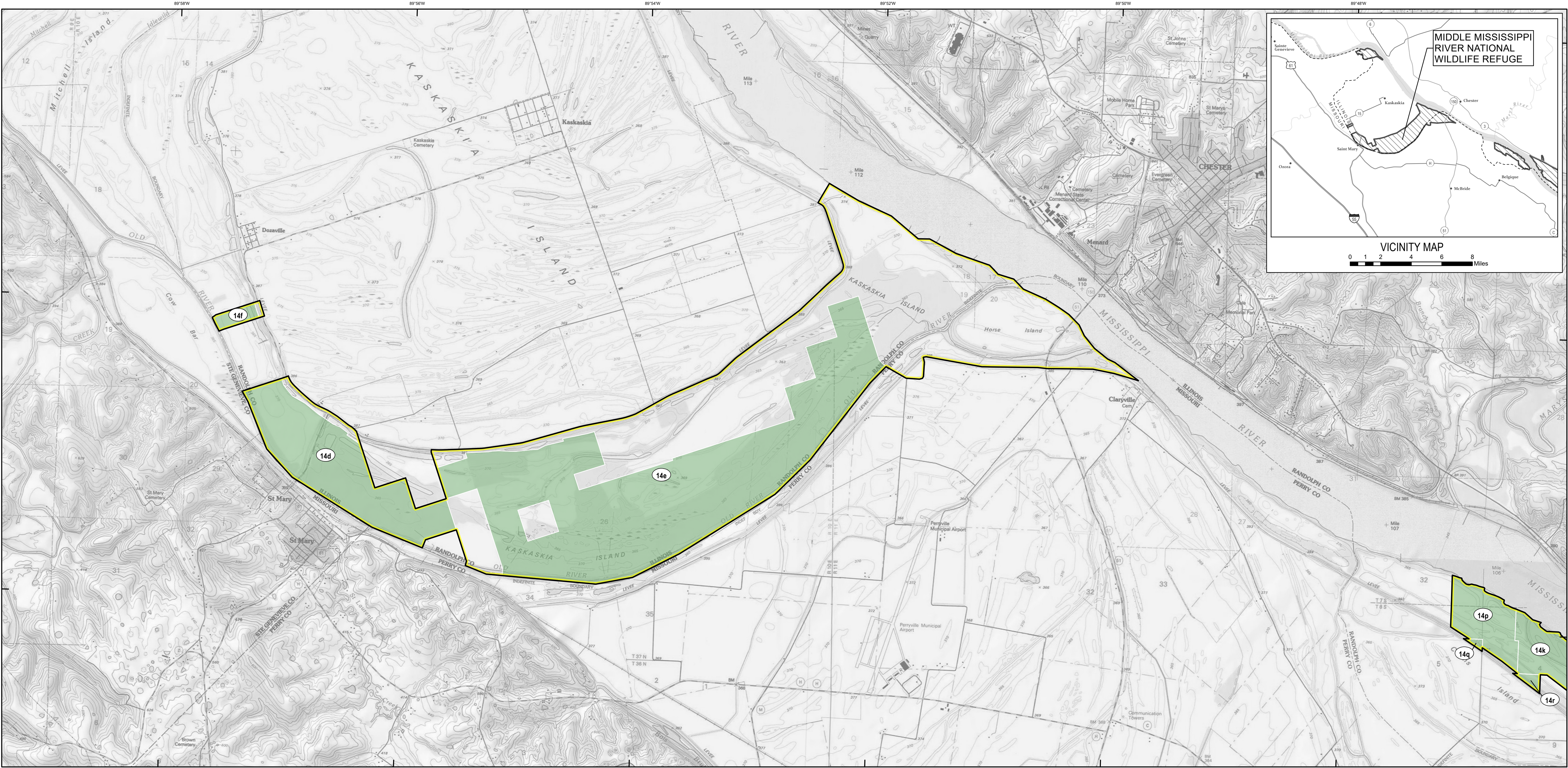
U.S. Fish & Wildlife Service

MIDDLE MISSISSIPPI RIVER NATIONAL WILDLIFE REFUGE

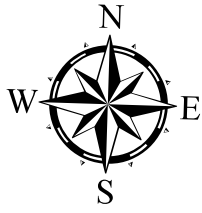
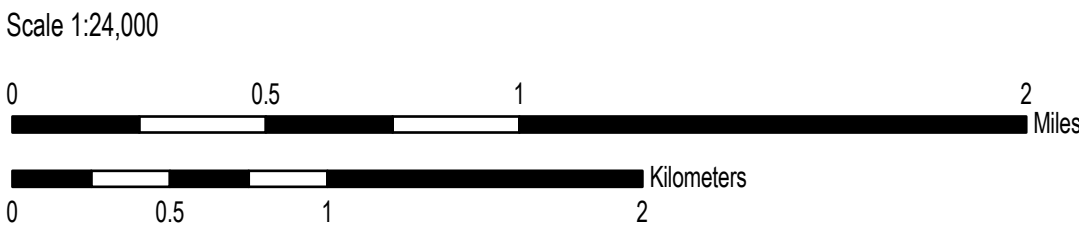
Randolph County, Illinois and Perry County, Missouri

Land Status

Sheet 5 of 9



Notes:
Produced in the Division of Realty
Bloomington, MN
Land Status Current to: August 31, 2017
Basemap Source: USGS 1:24,000 Topographic Map (Grayscale)
Meridian: 3rd Principal Meridian
Datum and Projection: GCS North American 1983 UTM Zone 16S (Calculated)
Published Date: 12/1/2017



| Boundaries | Acquired Interest |
|-------------------------------|-------------------|
| Approved Boundary - Inclusive | Fee Title |
| Approved Boundary - Limited | Easement/Lease |
| Outgrant/FWS Issued Permit | Secondary |
| Tract Boundary | Agreement |
| Special Designation | Tract Number |

Disclaimer: This map depicts lands and waters administered by the U.S. Fish and Wildlife Service (USFWS) in North America, U.S. Trust Territories and Possessions. It may also include inholdings that are not administered by USFWS. The primary source for this information is the USFWS Realty program.