



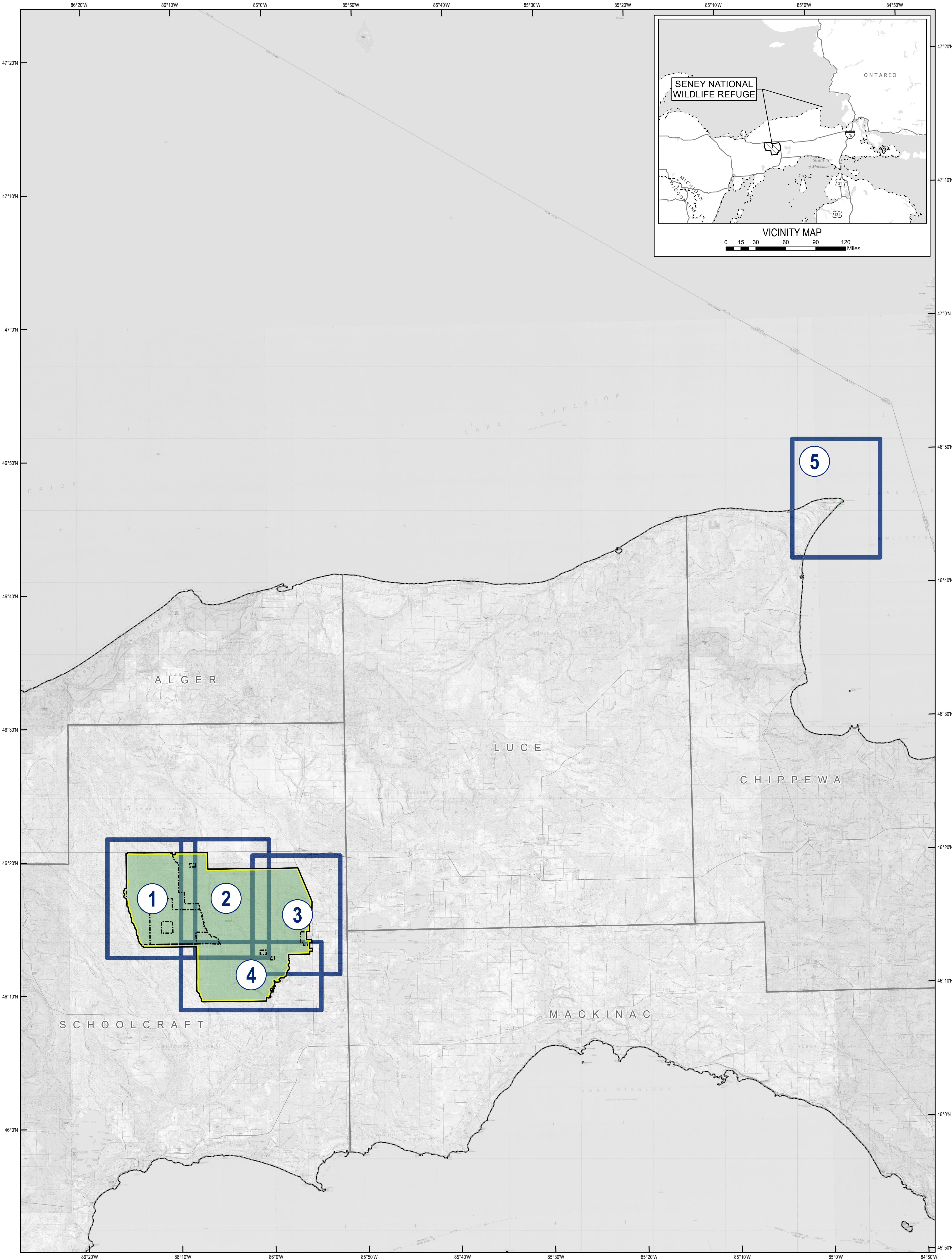
U.S. Fish & Wildlife Service

SENEY NATIONAL WILDLIFE REFUGE

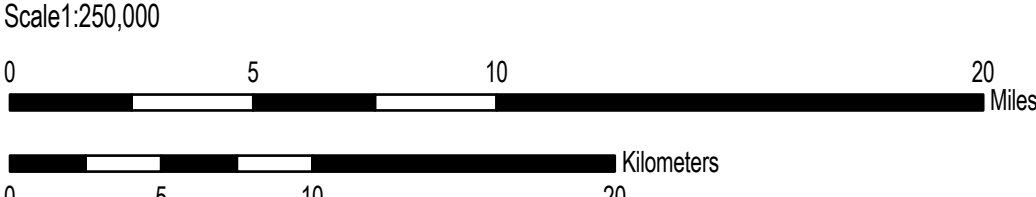
Michigan

Land Status

Map Index



Notes:
Produced in the Division of Realty
Bloomington, MN
Land Status Current to: August 31, 2017
Basemap Source: USGS 1:24,000 Topographic Map (Grayscale)
Meridian: Michigan Meridian
Datum and Projection: GCS North American 1983 UTM Zone 16T (Calculated)
Published Date: 11/30/2017



Boundaries		Acquired Interest	
	Approved Boundary - Inclusive		Fee Title
	Approved Boundary - Limited		Easement/Lease
	Outgrant/FWS Issued Permit		Secondary
	Special Designation		Agreement
	Map Sheet		

Disclaimer: This map depicts lands and waters administered by the U.S. Fish and Wildlife Service (USFWS) in North America, U.S. Trust Territories and Possessions. It may also include inholdings that are not administered by USFWS. The primary source for this information is the USFWS Realty program.