

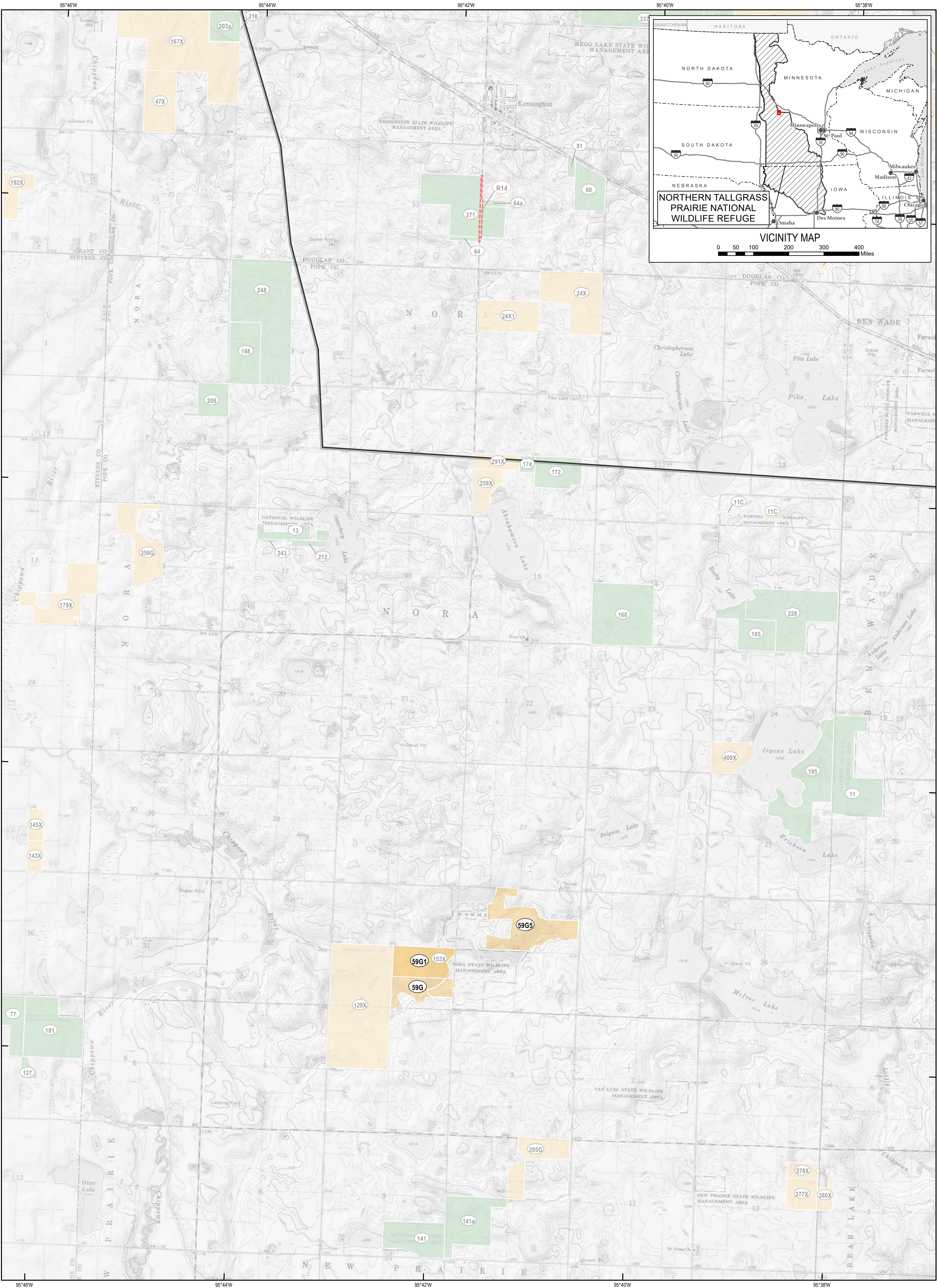


U.S. Fish & Wildlife Service

NORTHERN TALLGRASS PRAIRIE NATIONAL WILDLIFE REFUGE

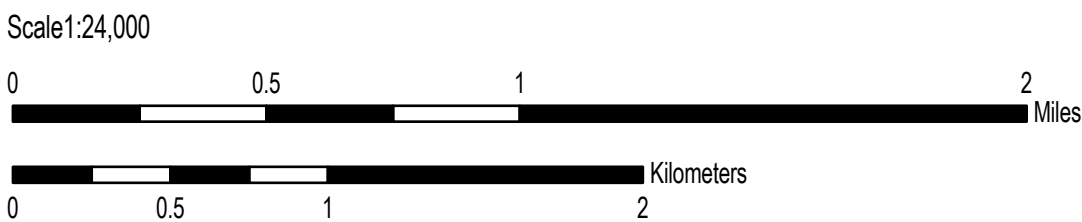
Pope County, Minnesota

Land Status  
Sheet 351 of 1370



**Notes:**  
Produced in the Division of Realty  
Bloomington, MN  
Land Status Current to: August 31, 2017  
Basemap Source: USGS 1:24,000 Topographic Map (Grayscale)  
Meridian: Fifth Principal  
Datum and Projection: GCS North American 1983 UTM Zone 15S (Calculated)  
Published Date: 12/5/2017

Regional Locator



Boundaries	Acquired Interest
Approved Boundary - Inclusive	Fee Title
Approved Boundary - Limited	Easement/Lease
Outgrant/FWS Issued Permit	Secondary
Tract Boundary	Agreement
Special Designation	(M3) (28) Tract Number

Disclaimer: This map depicts lands and waters administered by the U.S. Fish and Wildlife Service (USFWS) in North America, U.S. Trust Territories and Possessions. It may also include inholdings that are not administered by USFWS. The primary source for this information is the USFWS Realty program.