



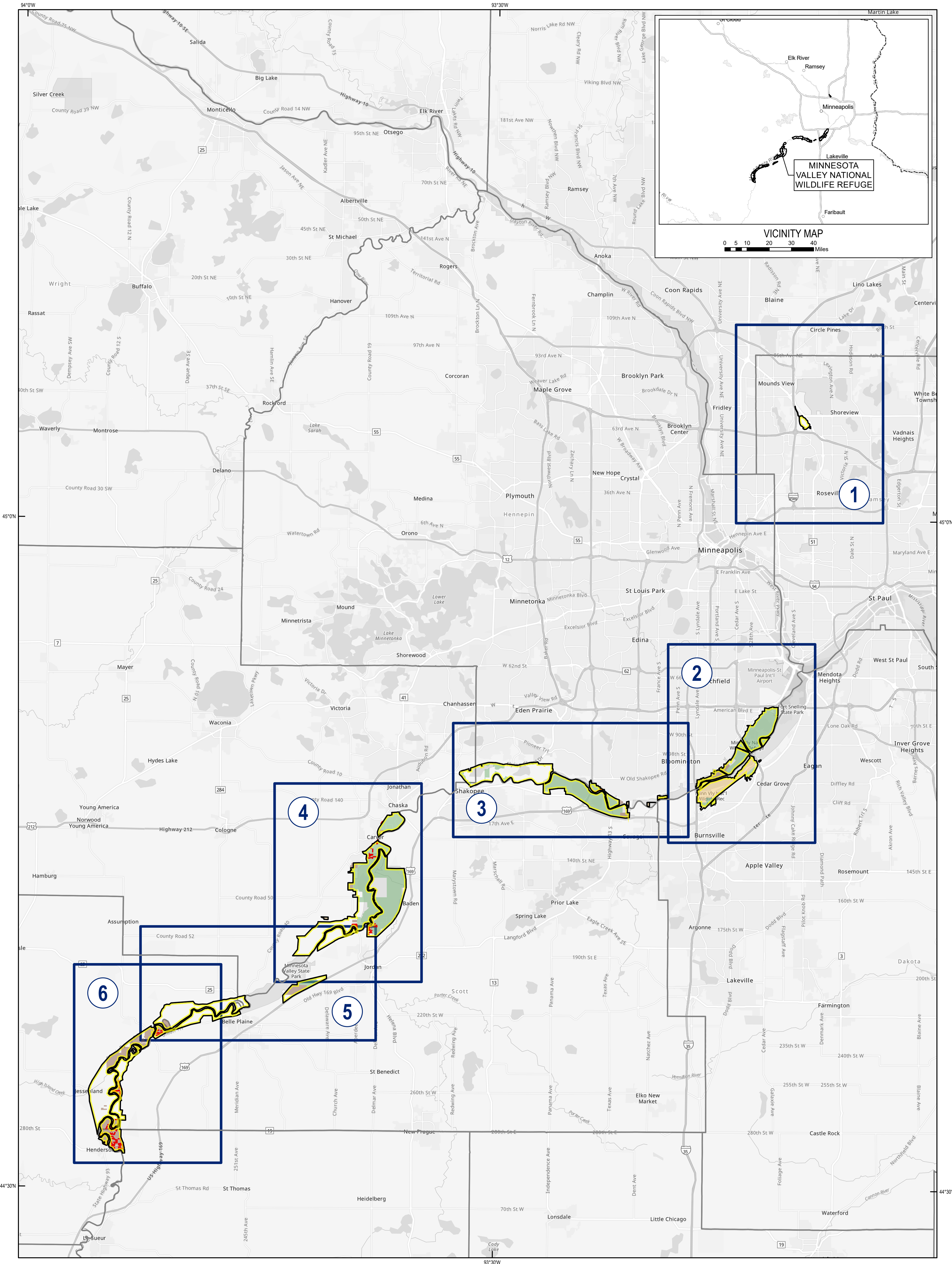
U.S. Fish & Wildlife Service

MINNESOTA VALLEY NATIONAL WILDLIFE REFUGE

Minnesota

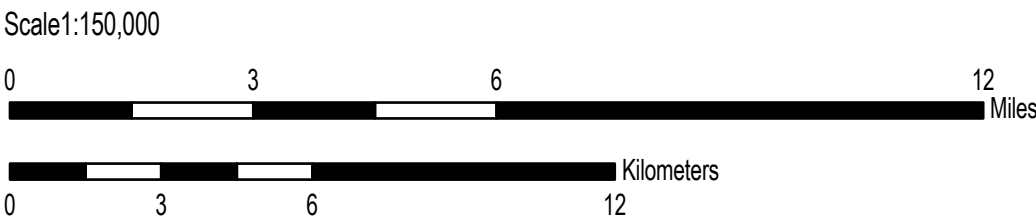
Land Status

Map Index



Notes:
Produced in the Division of Realty
Bloomington, MN
Land Status Current to: July 25, 2018
Basemap Source: USGS 1:24,000 Topographic Map (Grayscale)
Meridian: 5th Principal Meridian
Datum and Projection: GCS North American 1983 UTM Zone 15T (Calculated)
Published Date: 8/8/2018

Regional Locator



Boundaries	Acquired Interest
Approved Boundary - Inclusive	Fee Title
Approved Boundary - Limited	Easement/Lease
Outgrant/FWS Issued Permit	Secondary
Special Designation	Agreement
Map Sheet	

Disclaimer: This map depicts lands and waters administered by the U.S. Fish and Wildlife Service (USFWS) in North America, U.S. Trust Territories and Possessions. It may also include inholdings that are not administered by USFWS. The primary source for this information is the USFWS Realty program.