

St. Vincent National Wildlife Refuge
P. O. Box 447
Apalachicola, Florida 32320

September 23, 1980

Ms. Jo Black
Cooperative Fish & Wildlife Research Unit
117 Newins-Ziegler Hall
School of Forest Resources & Conservation
University of Florida
Gainesville, FL 32611

Dear Ms. Black,

Enclosed please find information which you requested for the Black Skimmer Survey and a map indicating the area of concentrations for loafing.

If I can provide any further information that would be helpful, please do not hesitate to contact me.

Sincerely,

Robert C. Ziobro
Assistant Refuge Manager

Enclosure

County: FRANKLIN
 Respondent: ROBERT P. ZIOBA
 ASST. REFUGEE MANAGER
 ST. VINCENT ISLAND

BLACK SKIMMER SURVEY

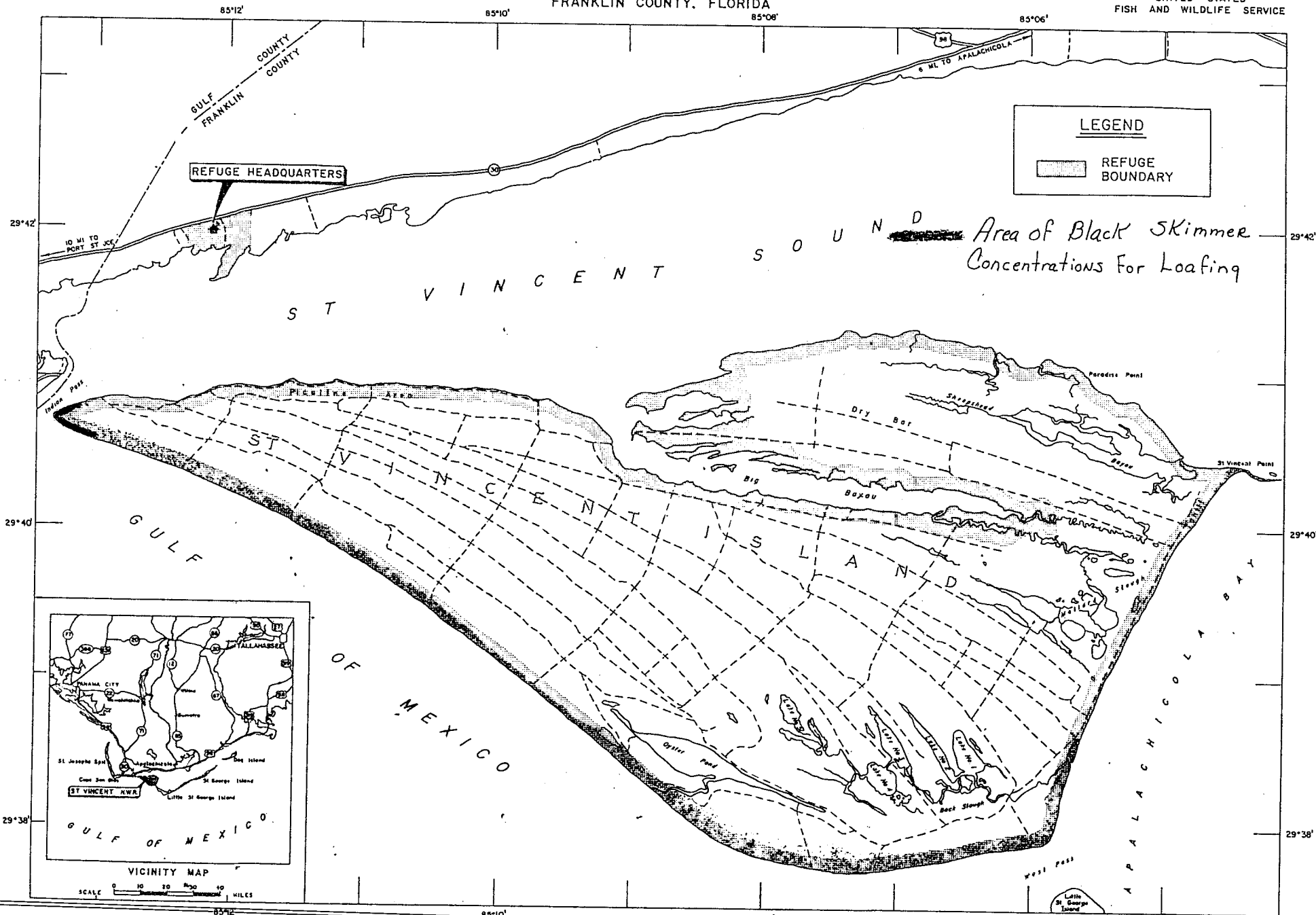
Loafing or Nesting Location ^{a/}	Date ^{b/}	Estimated number of skimmers
ST. VINCENT ISLAND (SEE ATTACHED MAP) INDIAN LASS BEACH	JAN, FEB, MAR 78	100
"	APR, MAY, JUN 78	100
"	JUL, AUG, SEP 78	50
"	OCT, NOV, DEC 78	100
"	JAN, FEB, MAR 79	200
"	APR, MAY, JUN 79	200
"	JUL, AUG, SEP 79	100
"	OCT, NOV, DEC 79	200
"	JAN, FEB, MAR 80	200
"	APR, MAY, JUN 80	200
"	JUL, AUG, SEP 80	200

^{a/} Please specify loafing site or colony site. In addition, be as exact as possible in reference to town, access roads, marinas, beaches, etc.

^{b/} This may be specific or simply early fall, late fall, early winter, etc.

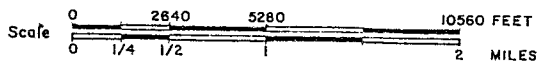
ST. VINCENT NATIONAL WILDLIFE REFUGE

FRANKLIN COUNTY, FLORIDA



COMPILED IN THE DIVISION OF REALTY
FROM SURVEYS BY U.S.G.S. AND
AERIAL PHOTOGRAPHS

ATLANTA, GEORGIA MARCH, 1967 REVISED 6/79



MEAN
DECLINATION
1966
4R FLA 794 403