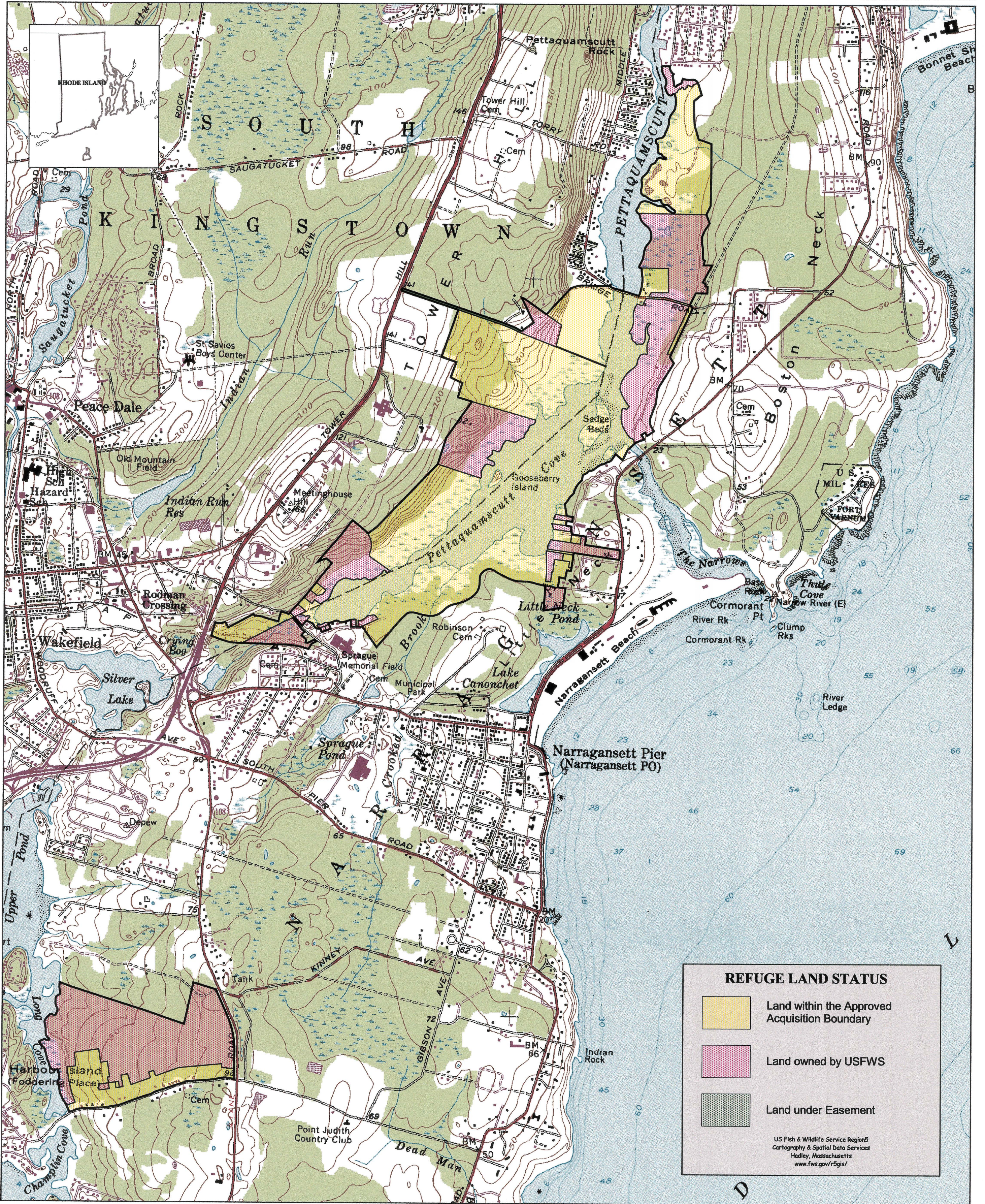


JOHN H. CHAFEE NATIONAL WILDLIFE REFUGE
WASHINGTON COUNTY, RHODE ISLAND

UNITED STATES
DEPARTMENT OF THE INTERIOR

UNITED STATES
FISH AND WILDLIFE SERVICE



COMPILED IN THE DIVISION OF REALTY
FROM SURVEYS BY USFWS AND USGS.
UTM, Zone 19, NAD 27, Meters
BOUNDARY UPDATED: 04/00
PRINTED: 08/07/00

0 0.5 1 1.5 Miles
1:16000

Magnetic North
True North
Mag. to True dec. -19 degrees
Old to True dec. 5 degrees

5R RI 1094