

U.S. Fish & Wildlife Service

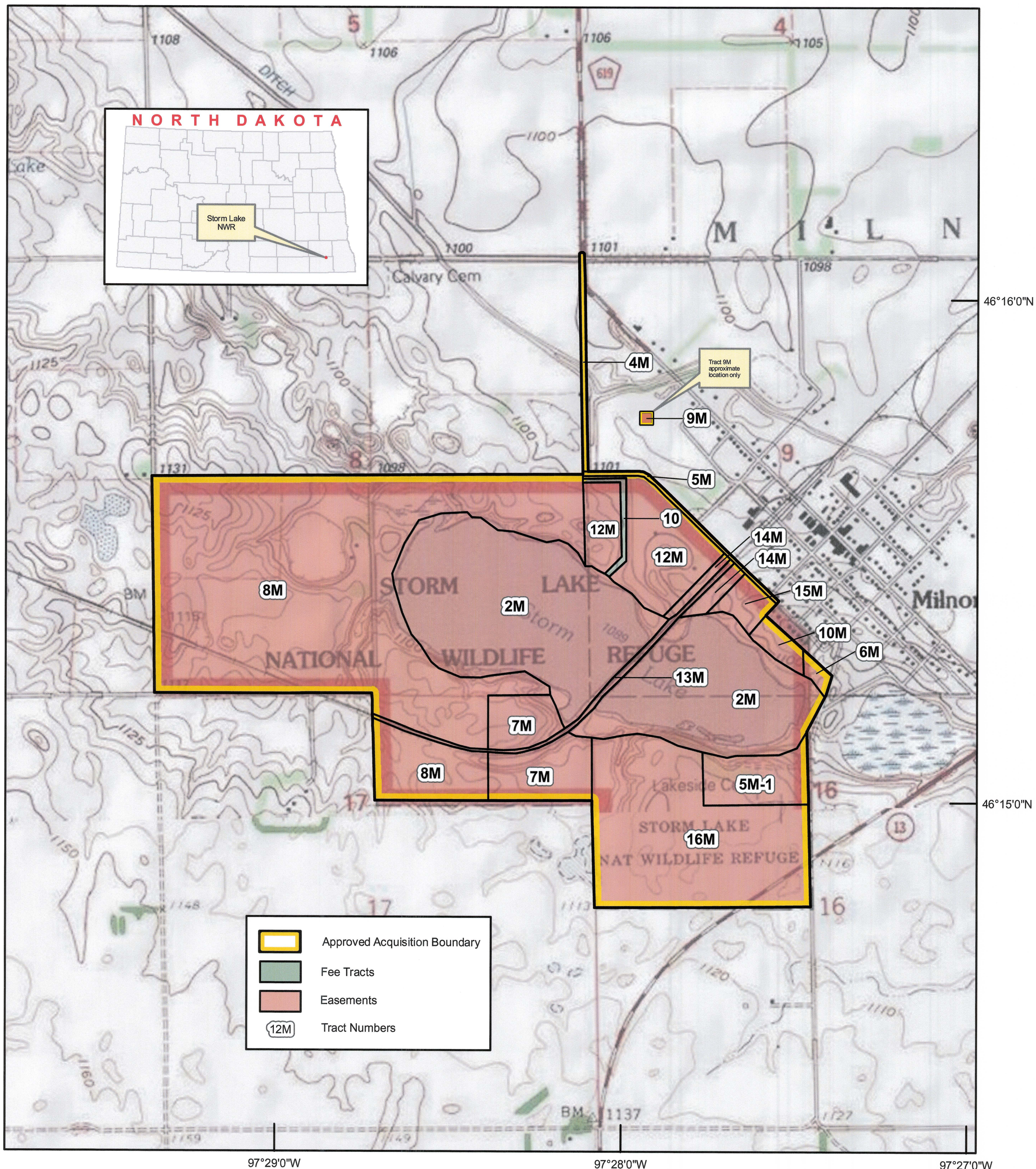
## Storm Lake National Wildlife Refuge

Sargent County, North Dakota

Land Status

R 54 W

T 132 N



PRODUCED IN THE DIVISION OF REFUGE PLANNING  
DENVER, COLORADO  
LAND STATUS CURRENT TO: 2/08/08  
MAP DATE: 2/24/09  
BASEMAP: DRG  
5TH PRINCIPAL MERIDIAN  
FILE: W\ND\SRL\MAPS\SRL\_BND.MXD

