

RACHEL CARSON NATIONAL WILDLIFE REFUGE
YORK COUNTY, MAINE

LITTLE RIVER DIVISION
UNITED STATES
FISH AND WILDLIFE SERVICE

UNITED STATES
DEPARTMENT OF THE INTERIOR

E 436,000

E 438,000

E 440,000

E 442,000

CITY OF BIDDEFORD

N 216,000

N 216,000

N 214,000

N 214,000

N 212,000

N 212,000

E 436,000

E 438,000

E 440,000

E 442,000

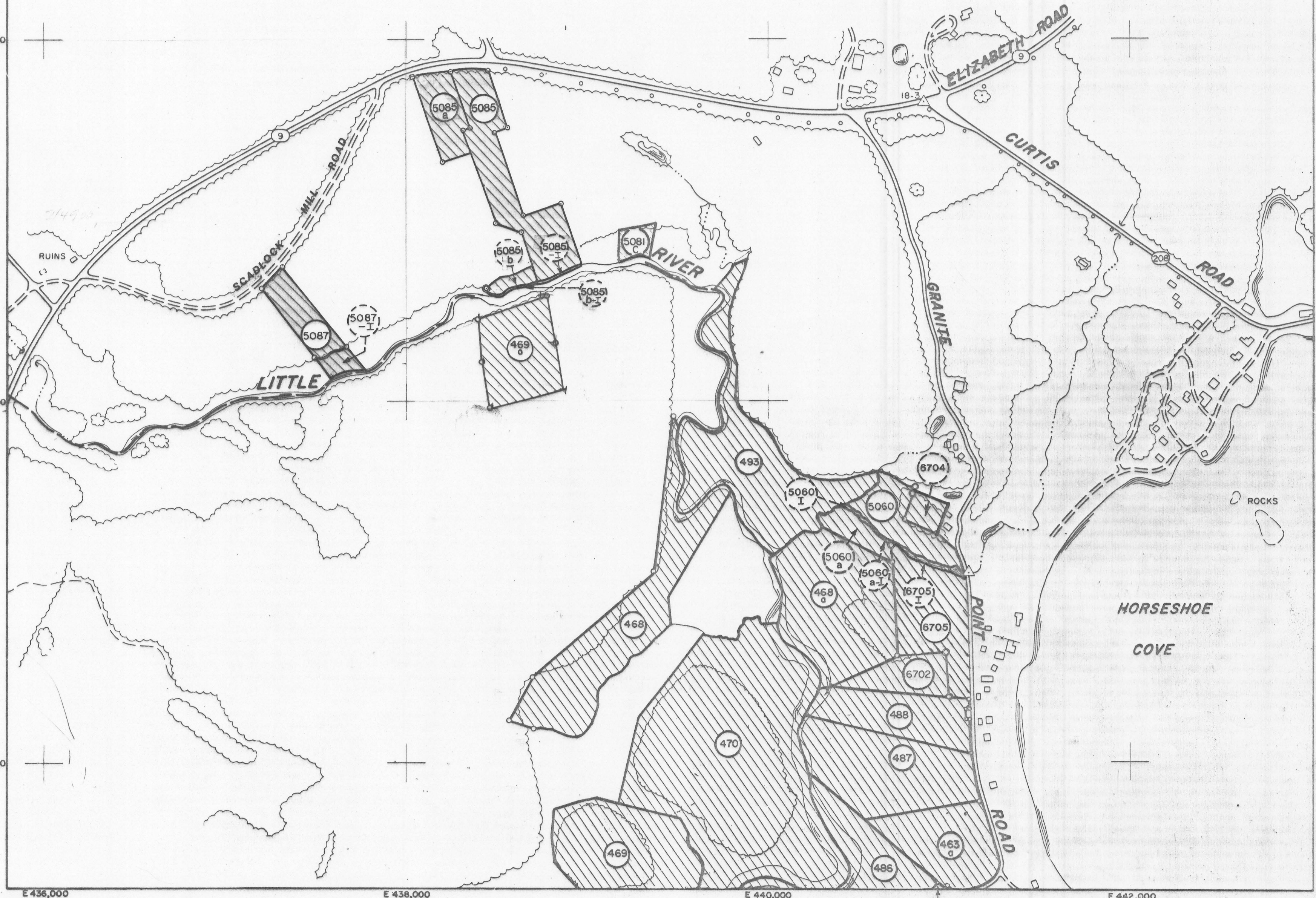
COMPILED BY NEW ENGLAND SURVEY SERVICE INC. AND SURVEYS
BY F. & W.S.

HADLEY, MASSACHUSETTS
REVISED: 12/95

OCTOBER 1966

Scale 0 400 800 1200 1600 FEET

17°
GRID NORTH
MEAN
DECLINATION
1956



RACHEL CARSON - LITTLE R. DIV. #1