

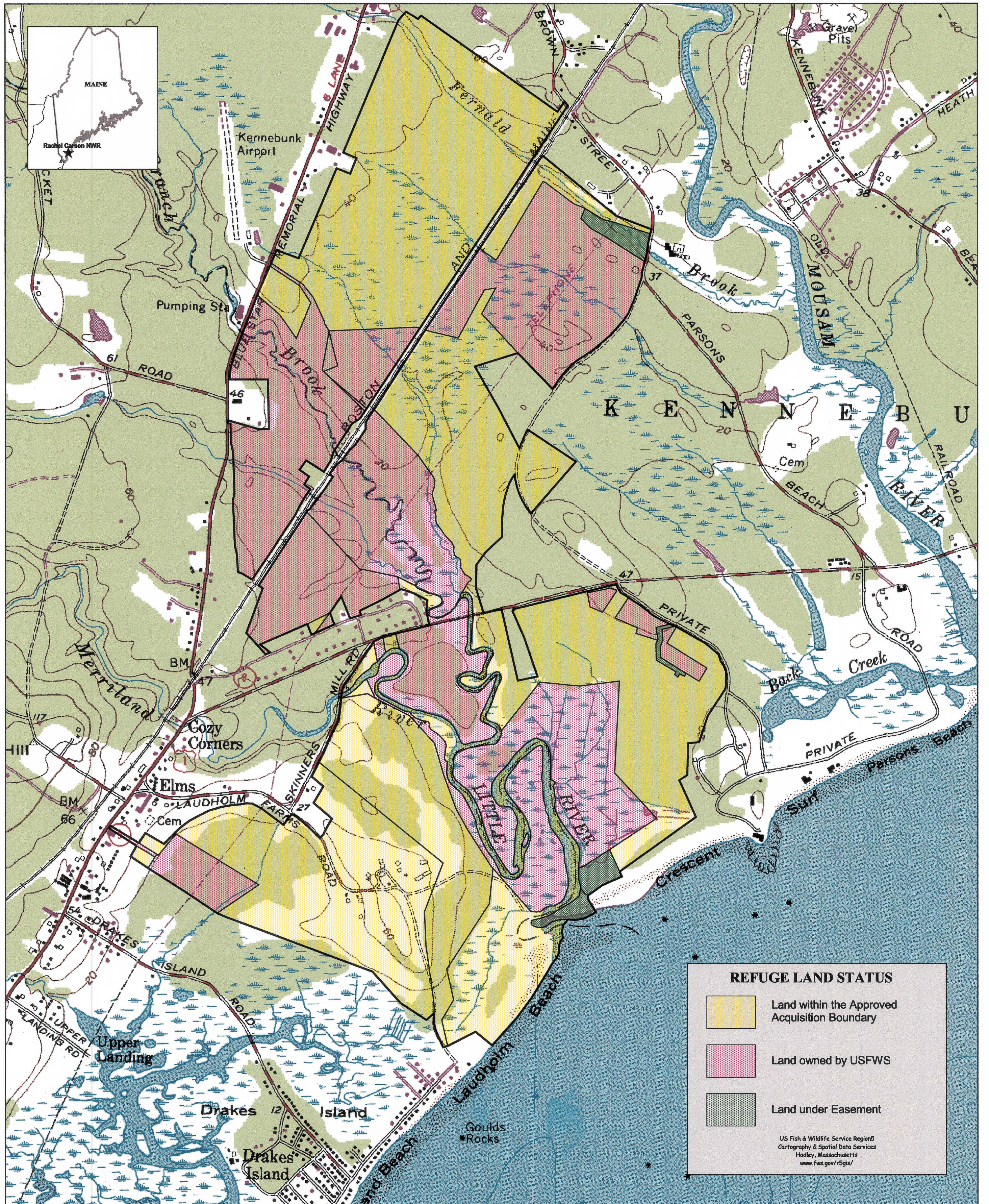
# RACHEL CARSON NATIONAL WILDLIFE REFUGE

YORK AND CUMBERLAND COUNTIES, MAINE

UPPER WELLS DIVISION

UNITED STATES  
DEPARTMENT OF THE INTERIOR

UNITED STATES  
FISH AND WILDLIFE SERVICE



COMPILED IN THE DIVISION OF REALTY  
FROM SURVEYS BY USFWS AND USGS.  
UTM, Zone 19, NAD 27, Meters  
BOUNDARY UPDATED: 11/99  
PRINTED: 08/16/00

0 0.5 1 1.5 Miles

1:12000

Magnetic North  
Mag. to True dec.  
-10 degrees  
True North  
Grid to True dec.  
-5 degrees

5R ME 770