

# The Trail Inventory of Atchafalaya NWR

## Lacombe, LA



Prepared By:  
Federal Highway Administration  
Central Federal Lands Highway Division  
June, 2013



# TABLE OF CONTENTS

<b><u>SECTION</u></b>	<b><u>PAGE</u></b>
<b>I.     <u>TRAIL AND TRAIL FEATURE SUMMARIES</u></b>	1 - 1
<b>II.    <u>TRAIL LOCATION MAPS</u></b>	2 - 1
<b>III.   <u>TRAIL IDENTIFICATION LIST</u></b>	3 - 1
<b>IV.    <u>TRAIL CHANGES AND CONDITION RATING SHEETS</u></b>	4 - 1
<b>V.     <u>TRAIL DEFICIENCY RATING SHEETS</u></b>	5 - 1
<b>VI.    <u>PHOTOGRAPHIC SHEETS</u></b>	6 - 1
<b>IX.    <u>GLOSSARY</u></b>	i

## **NOTE TO USERS OR READERS**

In this report, the reader may find a mix of dates associated with the condition assessment and photographs. Chapter 4 shows an updated condition assessment for each trail documented in this report. However there may be dates on the condition assessment pages that range from 2006 and 2007 to 2012. This occurred because the GPS dates of the trails originally rated in Cycle 1 were not updated when the cycle 3 assessment was done to in

2012. That GPS date is the basis for the Rating date in the report. Any new trail or section of trail that was collected and rated in Cycle 3 will have a rating date of 2012. While the rating dates may show a pre 2012 date, each trail was walked and its condition was assessed in 2012 during the Cycle 3 field season.

In Chapter 6 the reader may notice photographs with dates ranging from 2006 and 2007 to 2012. This occurs because the existing photographs from Cycle 1 were used if no significant or noticeable changes were seen in that location at the time of the Cycle 3 site visit.

The reader may also notice some of the feature photographs are used more than once. The practice of the same photograph being used for more than one feature was allowed during this cycle's data collection.

# Atchafalaya NWR

## Trail and Trail Feature Summaries

Trail Miles and Percentages by Surface Type and Condition

Trail Surface Type	Excellent		Good		Total
	Miles	%	Miles	%	Miles
Native	0.34	36%	0.60	64%	0.94
Total	0.34	36%	0.60	64%	0.94

Trail Miles and Percentages by Trail Classification and Condition

Trail Classification	Excellent		Good		Total
	Miles	%	Miles	%	Miles
TC3	0.34	36%	0.60	64%	0.94
Total	0.34	36%	0.60	64%	0.94

\*Admin Roads are included in the inventory but are not rated for condition.

### Trail Features

Trail Number	Feature Type	Quantity	Grouped Feature	Milepost	Photo
T300	Sign	6	No	0.00	ATCH_C3_089 4
T300	Gate	1	No	0.00	
T300	Trailhead	1	No	0.00	ATCH_C3_000 8
T300	Lookout/Ob Deck	1	No	0.32	
T301	Trailhead	1	No	0.00	ATCH_C3_089 8
T301	Sign	2	No	0.00	ATCH_C3_089 7

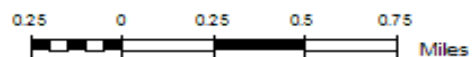
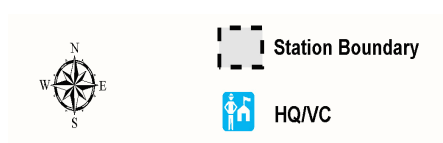
sf - square feet

lf - linear feet

cf - cubic feet



# Atchafalaya NWR Trail Location Map



## Trails ID

Station Name: Atchafalaya NWR

Org Code: 43614

Trail Number	Trail Name	Surface Type	SAMMS	Trail Mileage	Trail Description (Begin and End point of trail)
T300	Section 120 Road Trail	Native	10051322	0.60	From Section 120 Road Parking Area #2 (Rte 900) to End of Trail at Milepost 0.6
T301	Big Alabama Road Trail	Native	N/A	0.34	From End of Big Alabama Road to End of Trail

## CHANGES TO THE FISH AND WILDLIFE SERVICE TRAIL INVENTORY REPORT

### Atchafalaya NWR

#### Trails added to previous inventory:

Trail #	Trail Name	Reason for Addition
T301	Big Alabama Road Trail	new trail

#### Trails removed from previous inventory:

Trail #	Trail Name	Reason for Removal
---------	------------	--------------------

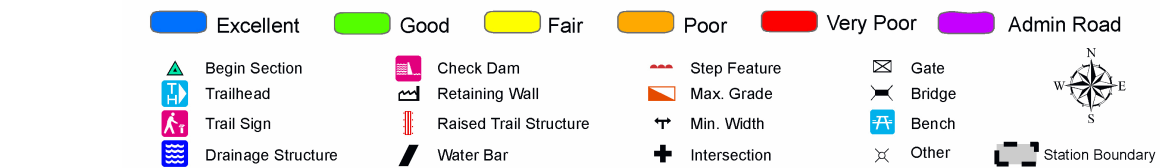
#### Trails modified from previous inventory:

Trail #	Trail Name	Type of Modification	Description of Modification
T300	Section 120 Road Trail	Name change	to Nature Trail

#### Comments:



## TRAIL CONDITION



**Trail Name:** Section 120 Road Trail  
**Trail Number:** T300

**Refuge Name:** Atchafalaya NWR  
**Region:** 4

**Total Length:** 0.60 Miles

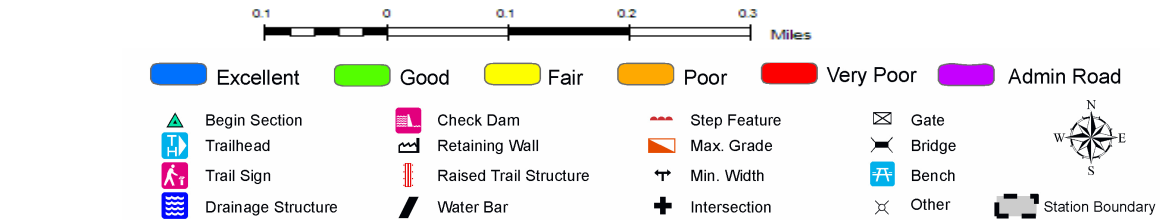
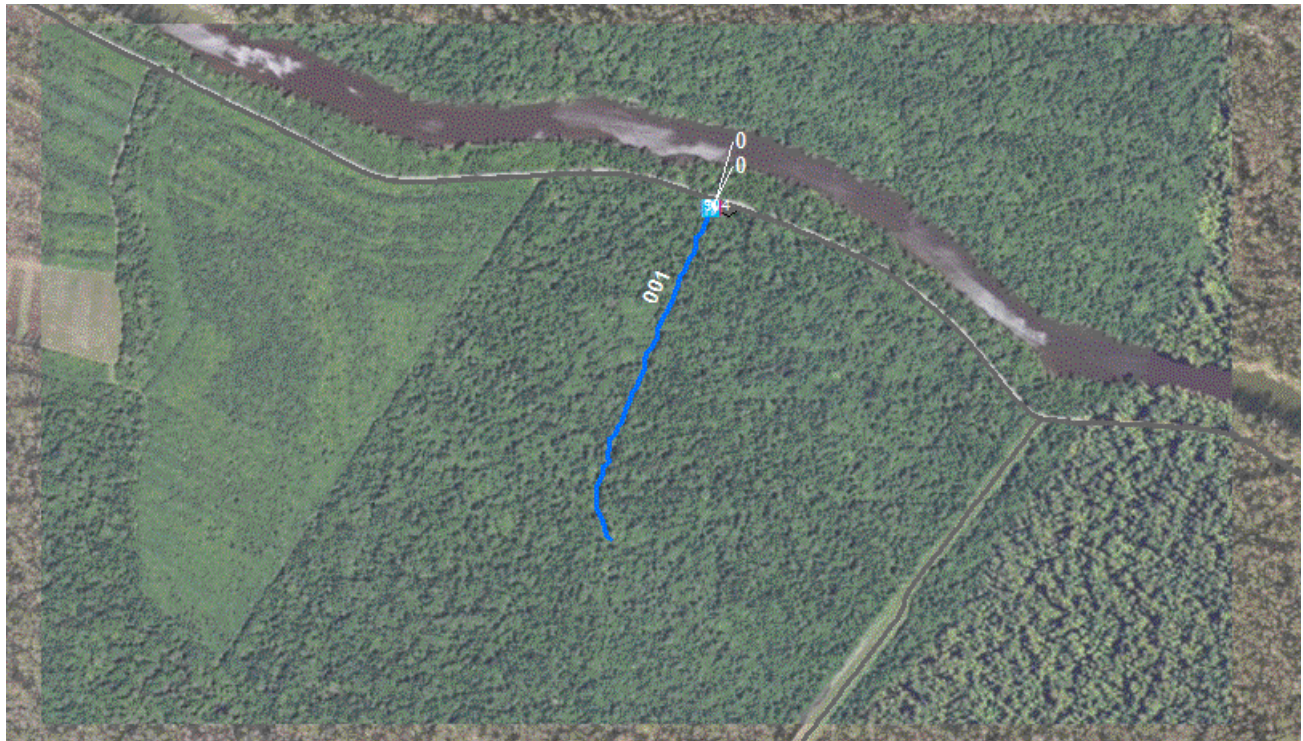
Section Number	001
Section Length (miles)	0.60
SAMMS Number	10051322
Rating Date	03/29/2006
<b>Trail Section Information</b>	
Trail Class	TC3
Surface Type	Native
Surface Firmness	Soft
Width (inches)	108
Average Grade (%)	2.9
Average X-slope (%)	2.40
<b>Trail Condition Information</b>	
Deferred Maintenance	\$2,197
CRV	\$106,133
FCI	0.02
Condition	Good

### Trail Condition TOTALS

Deferred Maintenance	CRV	FCI	Condition
\$2,197	\$106,133	0.02	Good



## TRAIL CONDITION



**Trail Name:** Big Alabama Road Trail  
**Trail Number:** T301

**Refuge Name:** Atchafalaya NWR  
**Region:** 4

**Total Length:** 0.34 Miles

Section Number	001
Section Length (miles)	0.34
SAMMS Number	N/A
Rating Date	07/03/2012
<b>Trail Section Information</b>	
Trail Class	TC3
Surface Type	Native
Surface Firmness	Very Soft
Width (inches)	173
Average Grade (%)	2.2
Average X-slope (%)	4.20
<b>Trail Condition Information</b>	
Deferred Maintenance	
CRV	\$96,339
FCI	0.00
Condition	Excellent

### Trail Condition TOTALS

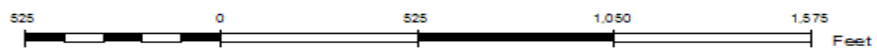
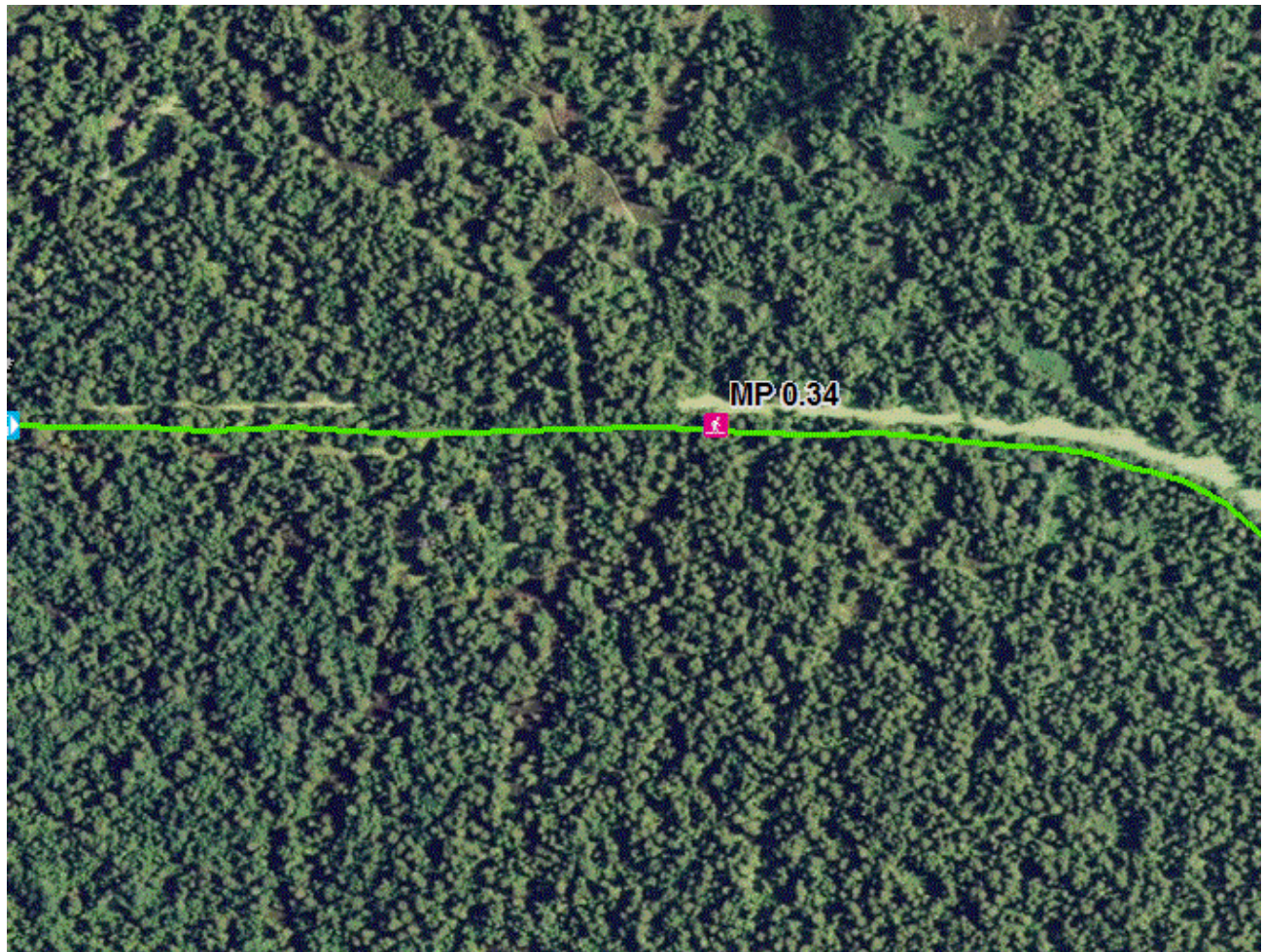
Deferred Maintenance	CRV	FCI	Condition
	\$96,339	0.00	Excellent

**NOTE TO USERS OR READERS**

This section shows an updated condition assessment for each trail documented in this report. However there may be dates on the condition assessment pages that range from 2006 and 2007 to 2012. This occurred because the GPS dates of the trails originally rated in Cycle 1 were not updated when the Cycle 3 assessment was done to in 2012. That GPS date is the basis for the Rating date in the report. Any new trail or section of trail that was collected and rated in Cycle 3 will have a rating date of 2012. While the rating dates may show a pre 2012 date, each trail was walked and its condition was assessed in 2012 during the Cycle 3 field season.



## TRAIL DEFICIENCY



**Trail Name:** Section 120 Road Trail

**Refuge Name:** Atchafalaya NWR

**Trail Number:** T300

**Region:** 4

**Total Length:** 0.60 Miles

Mile Post	0.34
Section Number	001
Photo Number	ATCH_C3_0896
Deficiency	Drainage
Action	Build/Add
Item	Culvert -lf
Quantity	25
Deferred Maintenance	\$2,197





## PHOTOGRAPHIC SHEET

TRAIL NUMBER: T300

STATION: Atchafalaya NWR

DATE: 07/03/2012



Photo # ATCH\_C3\_0894 - MP 0.00 - Sign

TRAIL NUMBER: T300

STATION: Atchafalaya NWR

DATE: 03/29/2006



Photo # ATCH\_C3\_0008 - MP 0.00 - Trailhead



## PHOTOGRAPHIC SHEET

TRAIL NUMBER: T301  
STATION: Atchafalaya NWR  
DATE: 07/03/2012



Photo # ATCH\_C3\_0897 - MP 0.00 - Sign

TRAIL NUMBER: T301  
STATION: Atchafalaya NWR  
DATE: 07/03/2012



Photo # ATCH\_C3\_0898 - MP 0.00 - Trailhead

# PHOTOGRAPHIC SHEET

## **A NOTE TO USERS OR READERS**

In this chapter the reader may notice photographs with dates ranging from 2006 and 2007 to 2012. This occurs because existing photographs from cycle 1 were used if no significant or noticeable changes were seen in that location at the time of the cycle 3 site visit.

The reader may also notice some photographs are used more than once. The practice of the same photograph being used for more than one feature was allowed during this cycle's data collection.

## Glossary of Terms and Abbreviations

<b>Acc Info</b>	Accessibility information available at trailhead.
<b>Action</b>	Action required to correct deficiency.
<b>Admin Road</b>	Administration Road. Admin Roads signed and advertised as trails are included in the trail inventory but a condition assessment is NOT done.
<b>Alt SAMMS</b>	SAMMS number of Alternate Facility Type.
<b>Alt Type</b>	Alternate Facility Type. Trail lies on a feature such as a levee, dam, administrative road or bridge, which has a separate SAMMS number.
<b>AvgGrade</b>	The average grade of the trail (%). The average of five measurements for trails less than two miles and ten measurements for trails equal to or greater than 2 miles.
<b>AvgSlope</b>	The average cross-slope of the trail (%). The average of five measurements for trails less than two miles and ten measurements for trails equal to or greater than 2 miles.
<b>Check Dam</b>	A small dam constructed across a drainage ditch, swale, or channel to lower the speed of concentrated flows.
<b>Condition</b>	Subjective rating of trail based on Facility Condition Index (FCI): FCI $\leq$ .01 = Excellent FCI .02 - .05 = Good FCI .06 - .10 = Fair FCI .11 - .20 = Poor FCI $>$ .20 = Failed
<b>Crib Wall</b>	Retaining wall.
<b>Current Replacement Value (CRV)</b>	The value of an asset determined by the estimated cost of replacing it.
<b>Def type</b>	Deficiency Type: Trail Structure, Drainage, Erosion, Obstacle, Trail Location, Other.
<b>Deferred Maintenance (DM)</b>	Maintenance that was not performed when scheduled.

<b>Elem ID</b>	Unique identifier for each trail section: Org Code-Trail Number-Section Number.
<b>Facility Condition Index (FCI)</b>	DM/CRV
<b>Grouped Features</b>	Grouped features include non-unique signs (mileposts, interpretive signs, species identification, etc.), water bars, check dams, steps, drain and drainage dips. For any given grouped feature, a GPS point and photo are taken for the first occurrence only and the total number of features in the group are entered into the “quantity” field of the data dictionary.
<b>Info Type</b>	Type of accessibility information available at trailhead: brochure, sign or other.
<b>Item</b>	Item on which the “Action” (see above) will be performed.
<b>Manage_Use</b>	Managed use of the trail: HIKE, BIKE, NSPC (non-specified), PACK, POR (portage), SNOWSHOE, XSKI (cross-country ski), OTHER.
<b>MP</b>	Distance of a trail feature or deficiency from the Trailhead.
<b>Puncheon</b>	Log footbridge used in area of poor drainage.
<b>Raised Trail Structure</b>	Boardwalk, Turnpike, Puncheon.
<b>T Class</b>	Trail Class: I-V (see Appendix ? for trail class descriptions).
<b>Tr Desig</b>	Trail Designation: Standard (Std), National Historic Trail (NHT), National Recreation Trail (NRT), National Scenic Trail (NST).
<b>Turnpike</b>	Trail tread elevated with dirt, rock or other aggregate from parallel side ditches and held in place by logs.