

The Trail Inventory of Bear River MBR Brigham City, UT



Prepared By:
Federal Highway Administration
Central Federal Lands Highway Division
May, 2012



TABLE OF CONTENTS

<u>SECTION</u>	<u>PAGE</u>
I. <u>TRAIL AND TRAIL FEATURE SUMMARIES</u>	1 - 1
II. <u>TRAIL LOCATION MAPS</u>	2 - 1
III. <u>TRAIL IDENTIFICATION LIST</u>	3 - 1
IV. <u>TRAIL CONDITION RATING SHEETS</u>	4 - 1
V. <u>TRAIL DEFICIENCY RATING SHEETS</u>	5 - 1
VI. <u>PHOTOGRAPHIC SHEETS</u>	6 - 1
VII. <u>GLOSSARY</u>	i

Bear River MBR

Trail and Trail Feature Summaries

Trail Miles and Percentages by Surface Type and Condition

Trail Surface Type	Excellent		Total
	Miles	%	Miles
Concrete	0.57	100%	0.57
Total	0.57	100%	0.57

Trail Miles and Percentages by Trail Classification and Condition

Trail Classification	Excellent		Total
	Miles	%	Miles
TC5	0.57	100%	0.57
Total	0.57	100%	0.57

*Admin Roads are included in the inventory but are not rated for condition.

Trail Features

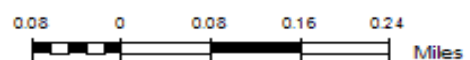
Trail Number	Feature Type	Quantity	Grouped Feature	Milepost	Photo
T500	Trailhead	1	No	0.00	BERI_C2_000 3
T500	Sign	1	No	0.00	BERI_C2_000 2
T500	Sign	1	No	0.05	BERI_C2_000 4
T500	Begin Section	1	No	0.27	BERI_C2_000 5
T500	Bench	1	No	0.29	
T500	Water Control Struc	1	No	0.31	
T500	Bench	1	No	0.32	
T500	Begin Section	1	No	0.34	BERI_C2_000 6
T500	Boardwalk -lf	82	No	0.41	BERI_C2_000 7

sf - square feet

lf - linear feet

cf - cubic feet

Bear River MBR Trail Location Map



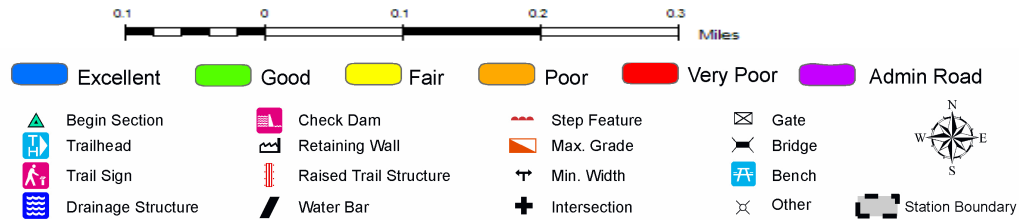
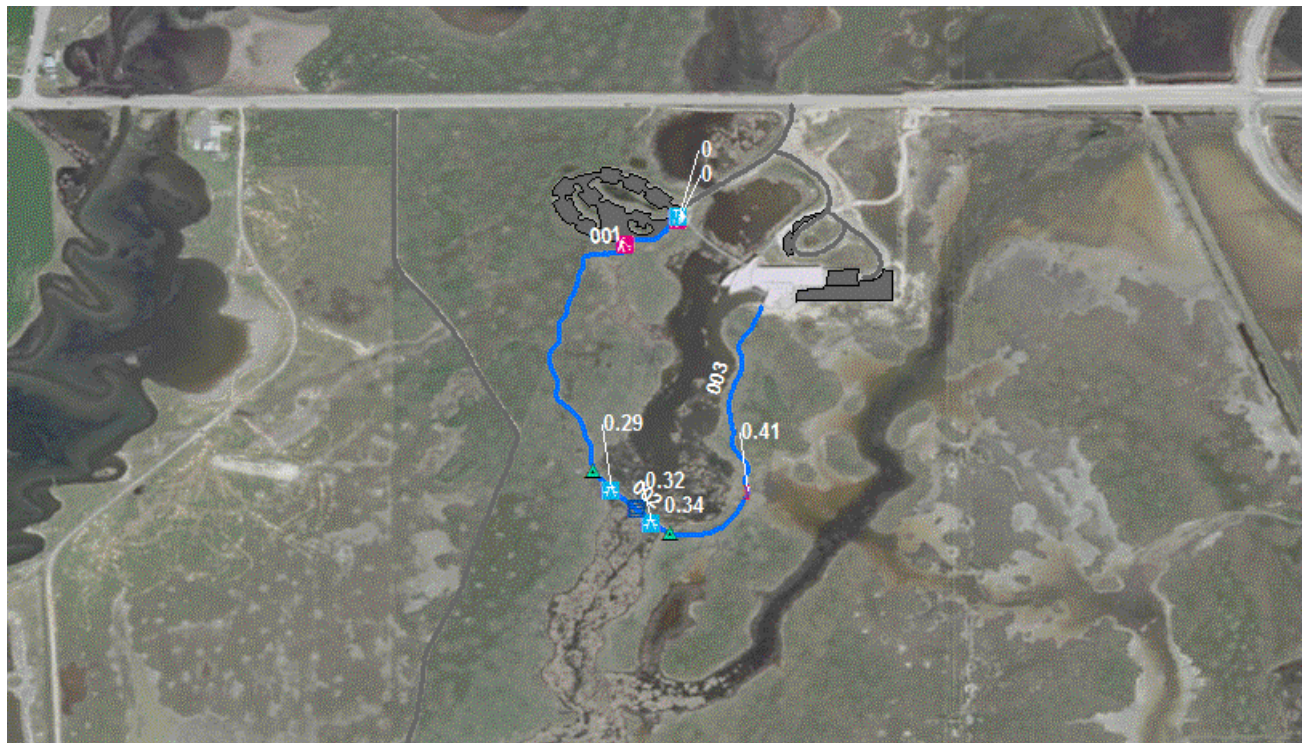
Trails ID

Station Name: Bear River MBR

Org Code: 65530

Trail Number	Trail Name	Surface Type	SAMMS	Trail Mileage	Trail Description (Begin and End point of trail)
T500	Wetland Wonders Walk	Concrete	10055462	0.57	From headquarters parking to end of loop

TRAIL CONDITION



Trail Name: Wetland Wonders Walk
Trail Number: T500

Refuge Name: Bear River MBR
Region: 6

Total Length: 0.57 Miles

Section Number	001	002	003
Section Length (miles)	0.27	0.07	0.23
SAMMS Number	10055462	10055462	10055462
Rating Date	05/10/2007	05/10/2007	05/10/2007
Trail Section Information			
Trail Class	TC5	TC5	TC5
Surface Type	Concrete	Concrete	Concrete
Surface Firmness	Paved	Paved	Paved
Width (inches)	72	96	72
Average Grade (%)	0.4	0.4	0.4
Average X-slope (%)	1.30	1.30	1.30
Trail Condition Information			
Deferred Maintenance			
CRV	\$55,156	\$19,067	\$46,980
FCI	0.00	0.00	0.00
Condition	Excellent	Excellent	Excellent

Trail Condition TOTALS

Deferred Maintenance	CRV	FCI	Condition
	\$121,203	0.00	Excellent

TRAIL DEFICIENCY

No Deficiencies

PHOTOGRAPHIC SHEET

TRAIL NUMBER: T500
STATION: Bear River MBR
DATE: 05/10/2007



Photo # BERI_C2_0003 - MP 0.00 - Trailhead

TRAIL NUMBER: T500
STATION: Bear River MBR
DATE: 05/10/2007



Photo # BERI_C2_0002 - MP 0.00 - Sign

PHOTOGRAPHIC SHEET

TRAIL NUMBER: T500
STATION: Bear River MBR
DATE: 05/10/2007



Photo # BERI_C2_0004 - MP 0.05 - Sign

TRAIL NUMBER: T500
STATION: Bear River MBR
DATE: 05/10/2007



Photo # BERI_C2_0005 - MP 0.27 - Begin Section

PHOTOGRAPHIC SHEET

TRAIL NUMBER: T500
STATION: Bear River MBR
DATE: 05/10/2007



Photo # BERI_C2_0006 - MP 0.34 - Begin Section

TRAIL NUMBER: T500
STATION: Bear River MBR
DATE: 05/10/2007



Photo # BERI_C2_0007 - MP 0.41 - Boardwalk -lf

Glossary of Terms and Abbreviations

Acc Info	Accessibility information available at trailhead.
Action	Action required to correct deficiency.
Admin Road	Administration Road. Admin Roads signed and advertised as trails are included in the trail inventory but a condition assessment is NOT done.
Alt SAMMS	SAMMS number of Alternate Facility Type.
Alt Type	Alternate Facility Type. Trail lies on a feature such as a levee, dam, administrative road or bridge, which has a separate SAMMS number.
AvgGrade	The average grade of the trail (%). The average of five measurements for trails less than two miles and ten measurements for trails equal to or greater than 2 miles.
AvgSlope	The average cross-slope of the trail (%). The average of five measurements for trails less than two miles and ten measurements for trails equal to or greater than 2 miles.
Check Dam	A small dam constructed across a drainage ditch, swale, or channel to lower the speed of concentrated flows.
Condition	Subjective rating of trail based on Facility Condition Index (FCI): FCI \leq .01 = Excellent FCI .02 - .05 = Good FCI .06 - .10 = Fair FCI .11 - .20 = Poor FCI $>$.20 = Failed
Crib Wall	Retaining wall.
Current Replacement Value (CRV)	The value of an asset determined by the estimated cost of replacing it.
Def type	Deficiency Type: Trail Structure, Drainage, Erosion, Obstacle, Trail Location, Other.
Deferred Maintenance (DM)	Maintenance that was not performed when scheduled.

Elem ID	Unique identifier for each trail section: Org Code-Trail Number-Section Number.
Facility Condition Index (FCI)	DM/CRV
Grouped Features	Grouped features include non-unique signs (mileposts, interpretive signs, species identification, etc.), water bars, check dams, steps, drain and drainage dips. For any given grouped feature, a GPS point and photo are taken for the first occurrence only and the total number of features in the group are entered into the “quantity” field of the data dictionary.
Info Type	Type of accessibility information available at trailhead: brochure, sign or other.
Item	Item on which the “Action” (see above) will be performed.
Manage_Use	Managed use of the trail: HIKE, BIKE, NSPC (non-specified), PACK, POR (portage), SNOWSHOE, XSKI (cross-country ski), OTHER.
MP	Distance of a trail feature or deficiency from the Trailhead.
Puncheon	Log footbridge used in area of poor drainage.
Raised Trail Structure	Boardwalk, Turnpike, Puncheon.
T Class	Trail Class: I-V (see Appendix ? for trail class descriptions).
Tr Desig	Trail Designation: Standard (Std), National Historic Trail (NHT), National Recreation Trail (NRT), National Scenic Trail (NST).
Turnpike	Trail tread elevated with dirt, rock or other aggregate from parallel side ditches and held in place by logs.