

The Trail Inventory of Benton Lake NWR Great Falls, MT



Prepared By:
Federal Highway Administration
Central Federal Lands Highway Division
April, 2012



TABLE OF CONTENTS

<u>SECTION</u>	<u>PAGE</u>
I. <u>TRAIL AND TRAIL FEATURE SUMMARIES</u>	1 - 1
II. <u>TRAIL LOCATION MAPS</u>	2 - 1
III. <u>TRAIL IDENTIFICATION LIST</u>	3 - 1
IV. <u>TRAIL CONDITION RATING SHEETS</u>	4 - 1
V. <u>TRAIL DEFICIENCY RATING SHEETS</u>	5 - 1
VI. <u>PHOTOGRAPHIC SHEETS</u>	6 - 1
VII. <u>GLOSSARY</u>	i

Benton Lake NWR

Trail and Trail Feature Summaries

Trail Miles and Percentages by Surface Type and Condition

Trail Surface Type	Excellent		Total
	Miles	%	Miles
Boardwalk	0.19	100%	0.19
Total	0.19	100%	0.19

Trail Miles and Percentages by Trail Classification and Condition

Trail Classification	Excellent		Total
	Miles	%	Miles
TC5	0.19	100%	0.19
Total	0.19	100%	0.19

*Admin Roads are included in the inventory but are not rated for condition.

Trail Features

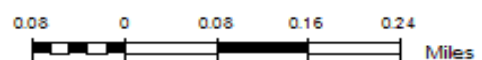
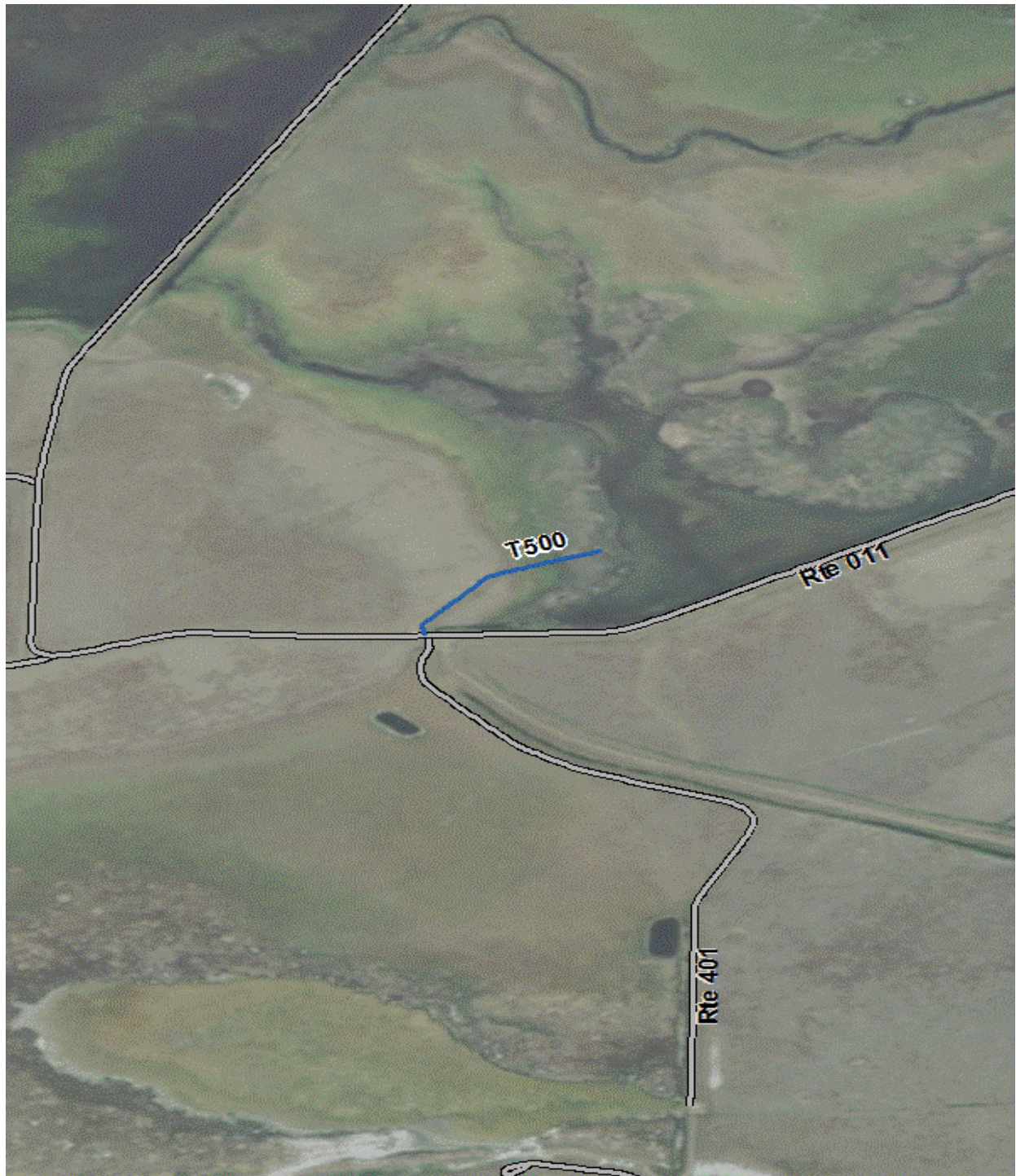
Trail Number	Feature Type	Quantity	Grouped Feature	Milepost	Photo
T500	Trailhead	1	No	0.00	BENT_C2_0013
T500	Sign	1	No	0.00	BENT_C2_0586
T500	Lookout/Ob Deck	1	No	0.07	
T500	Lookout/Ob Deck	1	No	0.19	
T500	Bench	2	No	0.19	
T500	Sign	2	No	0.19	BENT_C2_0589
T500	Sign	1	No	0.19	BENT_C2_0590

sf - square feet

lf - linear feet

cf - cubic feet

Benton Lake NWR Trail Location Map



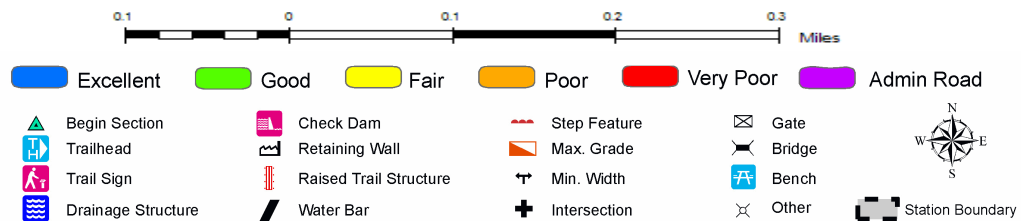
Trails ID

Station Name: Benton Lake NWR

Org Code: 61510

Trail Number	Trail Name	Surface Type	SAMMS	Trail Mileage	Trail Description (Begin and End point of trail)
T500	Prairie Marsh Trail	Boardwalk	10024931	0.19	From Prairie Marsh Trail Parking (Rte 901) to lookout

TRAIL CONDITION



Trail Name: Prairie Marsh Trail
Trail Number: T500

Refuge Name: Benton Lake NWR
Region: 6

Total Length: 0.19 Miles

Section Number	001
Section Length (miles)	0.19
SAMMS Number	10024931
Rating Date	07/15/2007
Trail Section Information	
Trail Class	TC5
Surface Type	Boardwalk
Surface Firmness	Boardwalk
Width (inches)	48
Average Grade (%)	0.9
Average X-slope (%)	2.10
Trail Condition Information	
Deferred Maintenance	
CRV	\$78,186
FCI	0.00
Condition	Excellent

Trail Condition TOTALS

Deferred Maintenance	CRV	FCI	Condition
	\$78,186	0.00	Excellent

TRAIL DEFICIENCY

No Deficiencies

PHOTOGRAPHIC SHEET

TRAIL NUMBER: T500
STATION: Benton Lake NWR
DATE: 07/13/2011



Photo # BENT_C2_0586 - MP 0.00 - Sign

TRAIL NUMBER: T500
STATION: Benton Lake NWR
DATE: 07/15/2007



Photo # BENT_C2_0013 - MP 0.00 - Trailhead

PHOTOGRAPHIC SHEET

TRAIL NUMBER: T500

STATION: Benton Lake NWR

DATE: 07/13/2011



Photo # BENT_C2_0589 - MP 0.19 - Sign

TRAIL NUMBER: T500

STATION: Benton Lake NWR

DATE: 07/13/2011



Photo # BENT_C2_0590 - MP 0.19 - Sign

Glossary of Terms and Abbreviations

Acc Info	Accessibility information available at trailhead.
Action	Action required to correct deficiency.
Admin Road	Administration Road. Admin Roads signed and advertised as trails are included in the trail inventory but a condition assessment is NOT done.
Alt SAMMS	SAMMS number of Alternate Facility Type.
Alt Type	Alternate Facility Type. Trail lies on a feature such as a levee, dam, administrative road or bridge, which has a separate SAMMS number.
AvgGrade	The average grade of the trail (%). The average of five measurements for trails less than two miles and ten measurements for trails equal to or greater than 2 miles.
AvgSlope	The average cross-slope of the trail (%). The average of five measurements for trails less than two miles and ten measurements for trails equal to or greater than 2 miles.
Check Dam	A small dam constructed across a drainage ditch, swale, or channel to lower the speed of concentrated flows.
Condition	Subjective rating of trail based on Facility Condition Index (FCI): FCI \leq .01 = Excellent FCI .02 - .05 = Good FCI .06 - .10 = Fair FCI .11 - .20 = Poor FCI $>$.20 = Failed
Crib Wall	Retaining wall.
Current Replacement Value (CRV)	The value of an asset determined by the estimated cost of replacing it.
Def type	Deficiency Type: Trail Structure, Drainage, Erosion, Obstacle, Trail Location, Other.
Deferred Maintenance (DM)	Maintenance that was not performed when scheduled.

Elem ID	Unique identifier for each trail section: Org Code-Trail Number-Section Number.
Facility Condition Index (FCI)	DM/CRV
Grouped Features	Grouped features include non-unique signs (mileposts, interpretive signs, species identification, etc.), water bars, check dams, steps, drain and drainage dips. For any given grouped feature, a GPS point and photo are taken for the first occurrence only and the total number of features in the group are entered into the “quantity” field of the data dictionary.
Info Type	Type of accessibility information available at trailhead: brochure, sign or other.
Item	Item on which the “Action” (see above) will be performed.
Manage_Use	Managed use of the trail: HIKE, BIKE, NSPC (non-specified), PACK, POR (portage), SNOWSHOE, XSKI (cross-country ski), OTHER.
MP	Distance of a trail feature or deficiency from the Trailhead.
Puncheon	Log footbridge used in area of poor drainage.
Raised Trail Structure	Boardwalk, Turnpike, Puncheon.
T Class	Trail Class: I-V (see Appendix ? for trail class descriptions).
Tr Desig	Trail Designation: Standard (Std), National Historic Trail (NHT), National Recreation Trail (NRT), National Scenic Trail (NST).
Turnpike	Trail tread elevated with dirt, rock or other aggregate from parallel side ditches and held in place by logs.