

The Trail Inventory of Benton Lake National Wildlife Refuge Great Falls, Montana



**Prepared By:
Federal Highway Administration
Central Federal Lands Highway Division
July 2007**



Benton Lake NWR

Trail and Trail Feature Summaries

Trail Miles and Percentages by Surface Type and Condition

Trail Surface Type	Mileage by Trail Condition												Total Miles
	Excellent		Good		Fair		Poor		Very Poor		Not Rated*		
	MILES	%	MILES	%	MILES	%	MILES	%	MILES	%	MILES	%	
Native		0%		0%		0%		0%		0%		0%	0.00
Gravel		0%		0%		0%		0%		0%		0%	0.00
Asphalt		0%		0%		0%		0%		0%		0%	0.00
Concrete		0%		0%		0%		0%		0%		0%	0.00
Turnpike		0%		0%		0%		0%		0%		0%	0.00
Boardwalk	0.19	100%		0%		0%		0%		0%		0%	0.19
Puncheon		0%		0%		0%		0%		0%		0%	0.00
Woodchips		0%		0%		0%		0%		0%		0%	0.00
Mowed		0%		0%		0%		0%		0%		0%	0.00
Admin Road		0%		0%		0%		0%		0%		0%	0.00
Other		0%		0%		0%		0%		0%		0%	0.00
Totals	0.19	100%	0.00	0%	0.00	0%	0.00	0%	0.00	0%	0.00	0%	0.19

Trail Miles and Percentages by Trail Classification and Condition

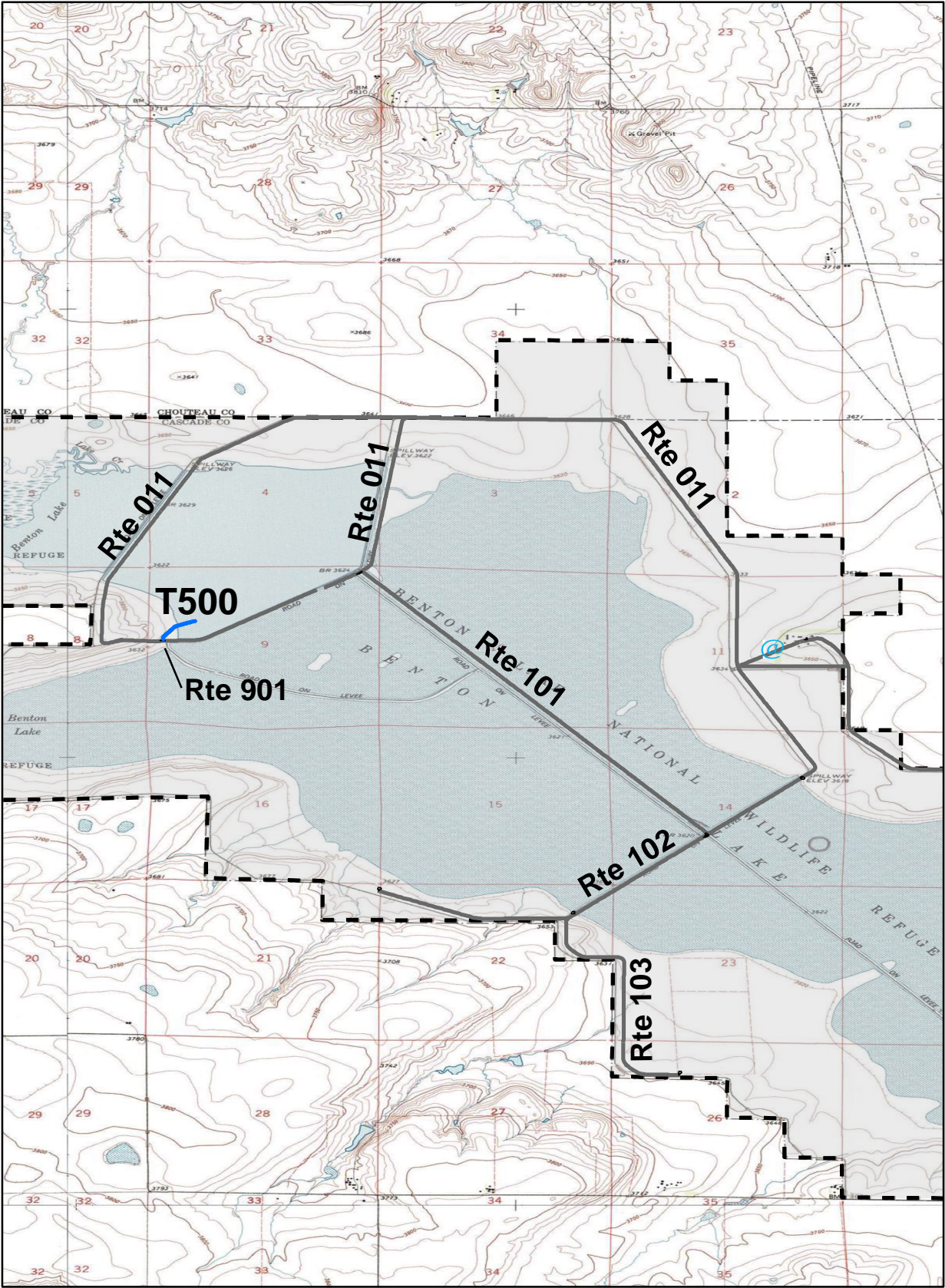
Trail Classification	Mileage by Trail Condition												Total Miles
	Excellent		Good		Fair		Poor		Very Poor		Not Rated*		
	MILES	%	MILES	%	MILES	%	MILES	%	MILES	%	MILES	%	
TC1		0%		0%		0%		0%		0%		0%	0.00
TC2		0%		0%		0%		0%		0%		0%	0.00
TC3		0%		0%		0%		0%		0%		0%	0.00
TC4		0%		0%		0%		0%		0%		0%	0.00
TC5	0.19	100%		0%		0%		0%		0%		0%	0.19
Totals	0.19	100%	0.00	0%	0.00	0%	0.00	0%	0.00	0%	0.00	0%	0.19

* Admin Roads are included in the inventory but are not rated for condition.

Trail Features

Trail Number	Feature Type	Quantity	Grouped Feature	Milepost	Photo
T500	Sign	2	No	0.00	12
T500	Bench	6	Yes	N/A	N/A
T500	Lookout/Ob Deck	1	No	0.07	N/A
T500	Lookout/Ob Deck	1	No	0.19	N/A
sf-square feet					
lf-linear feet					
cf-cubic feet					

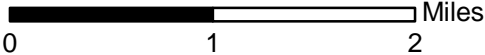
BENTON LAKE NATIONAL WILDLIFE REFUGE TRAIL LOCATION MAP



Station Boundary



HQ/VC



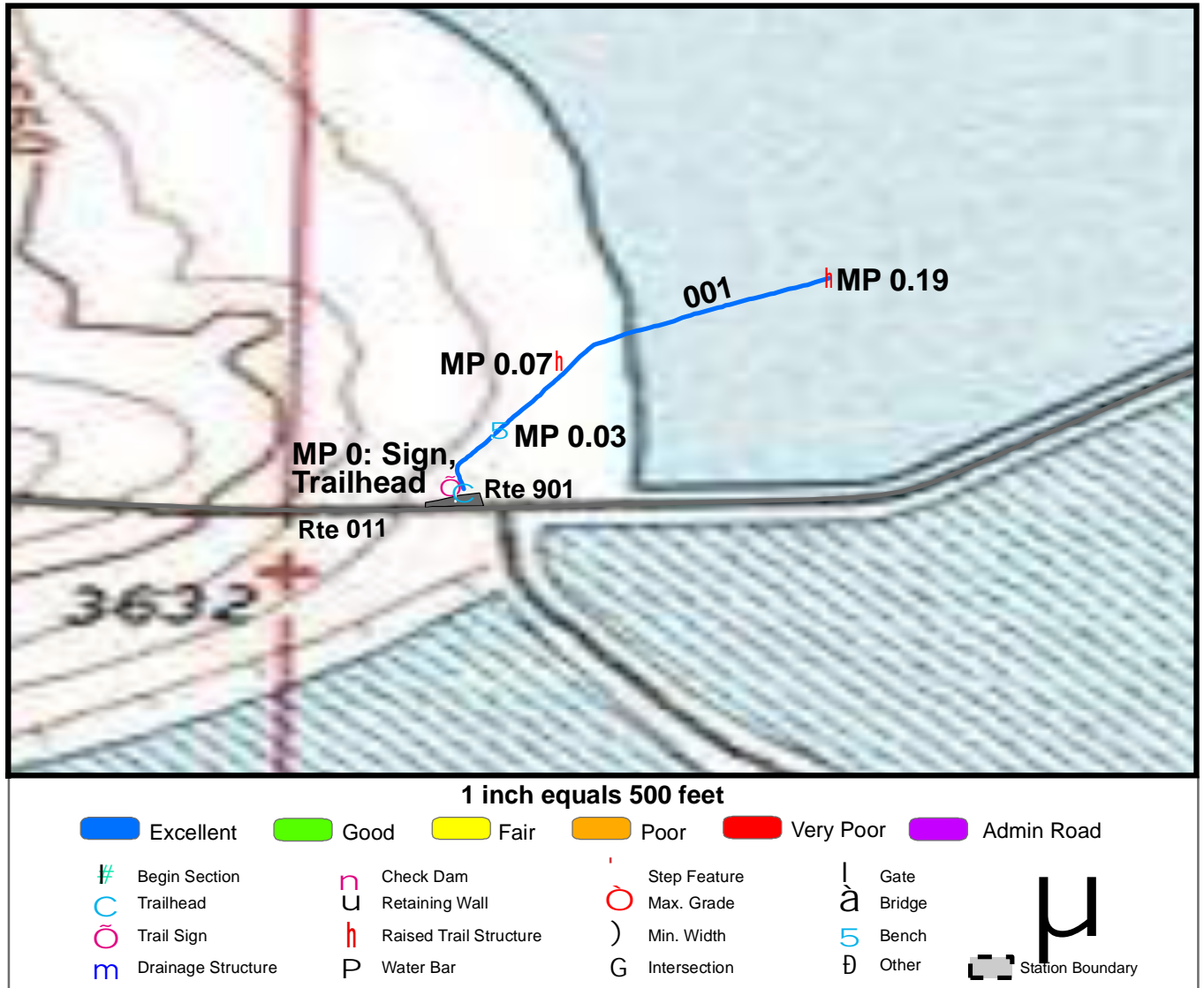
TRAILS ID

Station Name: Benton Lake NWR

Org. Code: 61510

Trail #	Trail Name	Surface Type(s)	SAMMS	Trail Mileage	Trail Description (Begin and End point of trail)
T500	Prairie Marsh Trail	Boardwalk	10024931	0.19	From Prairie Marsh Trail Parking (Rte 901) to lookout

TRAIL CONDITION



Trail Name: Prairie Marsh Trail

Refuge Name: Benton Lake

Trail Number: T500

Region: 6

TOTAL LENGTH: 0.19 Miles

Section Number	001				
Section Length (miles)	0.19				
SAMMS Number	10024931				
Rating Date	7/15/2007				
Trail Section Information					
Trail Class	TC5				
Surface Type	Boardwalk				
Surface Firmness	Hard				
Width (inches)	48				
Average Grade (%)	0.9				
Average X-slope (%)	2.1				
Trail Condition Information					
Deferred Maintenance	\$0				
CRV	\$113569				
FCI	0				
Condition	Excellent				

Trail Condition TOTALS

Deferred Maintenance	CRV	FCI	Condition
\$0	\$113569	0	Excellent

PHOTOGRAPHIC SHEET

TRAIL NUMBER: **T500**

STATION: Benton Lake NWR

DATE: 7/15/2007



Photo # 13 - MP 0.0 - Trailhead

TRAIL NUMBER: **T500**

STATION: Benton Lake NWR

DATE: 7/15/2007



Photo # 12 - MP 0.0 - Signs