

# The Trail Inventory of Browns Park NWR Maybell, CO



Prepared By:  
Federal Highway Administration  
Central Federal Lands Highway Division  
April, 2012



# TABLE OF CONTENTS

<u>SECTION</u>	<u>PAGE</u>
I. <u>TRAIL AND TRAIL FEATURE SUMMARIES</u>	1 - 1
II. <u>TRAIL LOCATION MAPS</u>	2 - 1
III. <u>TRAIL IDENTIFICATION LIST</u>	3 - 1
IV. <u>TRAIL CONDITION RATING SHEETS</u>	4 - 1
V. <u>TRAIL DEFICIENCY RATING SHEETS</u>	5 - 1
VI. <u>PHOTOGRAPHIC SHEETS</u>	6 - 1
VII. <u>GLOSSARY</u>	i

# Browns Park NWR

## Trail and Trail Feature Summaries

Trail Miles and Percentages by Surface Type and Condition

Trail Surface Type	Excellent		Others		Total
	Miles	%	Miles	%	Miles
Native	0.48	100%	0.00	0%	0.48
Mowed	0.89	100%	0.00	0%	0.89
Admin Road	0.00	0%	3.96	100%	3.96
Total	1.37	26%	3.96	74%	5.33

Trail Miles and Percentages by Trail Classification and Condition

Trail Classification	Excellent		Others		Total
	Miles	%	Miles	%	Miles
TC2	0.48	100%	0.00	0%	0.48
TC3	0.89	18%	3.96	82%	4.85
Total	1.37	26%	3.96	74%	5.33

\*Admin Roads are included in the inventory but are not rated for condition.

## Trail Features

Trail Number	Feature Type	Quantity	Grouped Feature	Milepost	Photo
T200	Trailhead	1	No	0.00	BRPA_C2_0498
T200	Begin Section	1	No	0.48	BRPA_C2_0499
T300	Sign	1	No	0.00	BRPA_C2_0488
T300	Culvert -lf	15	No	0.00	
T300	Trailhead	1	No	0.00	BRPA_C2_0490
T300	Bridge -sf	40	No	0.21	BRPA_C2_0491
T300	Bridge -sf	32	No	0.28	BRPA_C2_0492
T300	Sign	1	No	0.31	BRPA_C2_0493
T300	Bench	1	No	0.62	
T300	Bench	1	No	0.67	
T300	Bench	1	No	0.78	
T300	Bridge -sf	30	No	0.86	BRPA_C2_0495
T301	Sign	2	No	0.00	BRPA_C2_0496
T301	Trailhead	1	No	0.00	BRPA_C2_0497

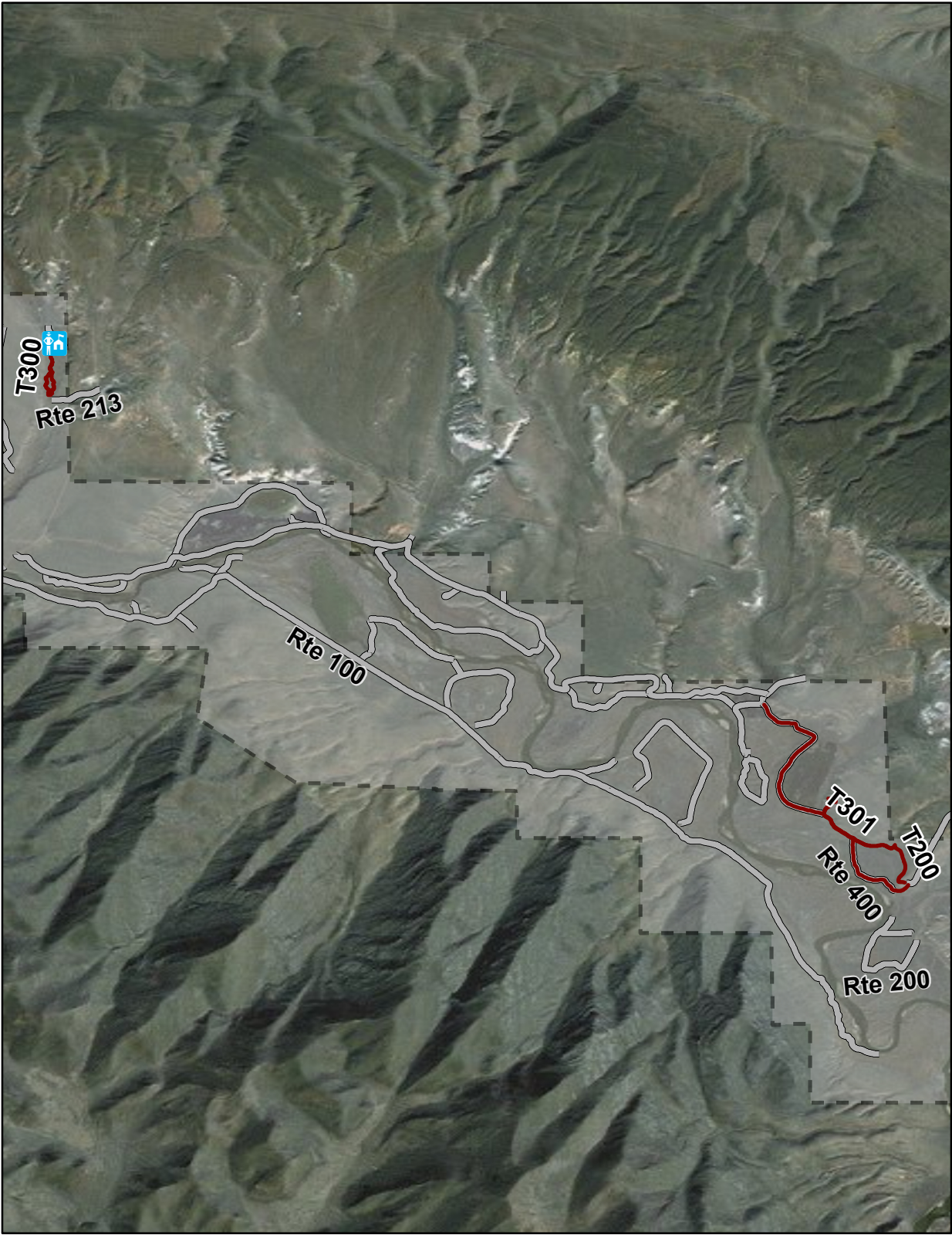
sf - square feet

lf - linear feet

cf - cubic feet



# Browns Park NWR Trail Location Map



Station Boundary



HQ/VC

0 1.5 3 Miles

## Trails ID

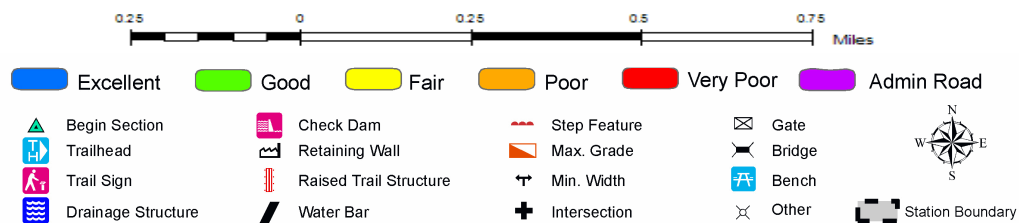
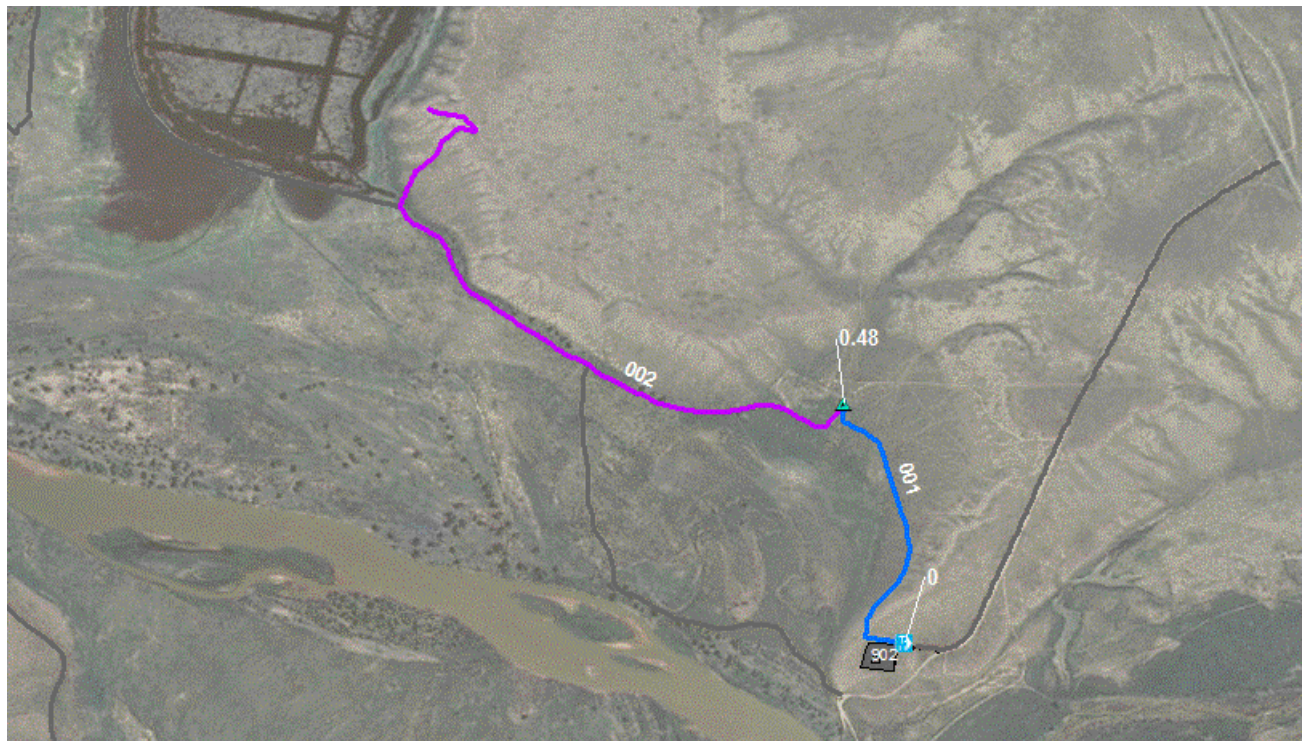
Station Name: Browns Park NWR

Org Code: 65550

Trail Number	Trail Name	Surface Type	SAMMS	Trail Mileage	Trail Description (Begin and End point of trail)
T200	Two Bar Ranch Loop Trail	Admin Road		1.01	From Ladore School House Parking (Rte 903) to Viewing Point
T200	Two Bar Ranch Loop Trail	Native		0.48	From Ladore School House Parking (Rte 903) to Viewing Point
T300	Beaver Creek Trail	Mowed		0.89	From Headquarters/Visitor Parking (Rte 900) To End of Loop
T301	Hoy Dike Trail	Admin Road		2.95	From Bunkhouse Parking (Rte 800) To Ladore School House Parking (Rte 903)



## TRAIL CONDITION



**Trail Name:** Two Bar Ranch Loop Trail  
**Trail Number:** T200

**Refuge Name:** Browns Park NWR  
**Region:** 6

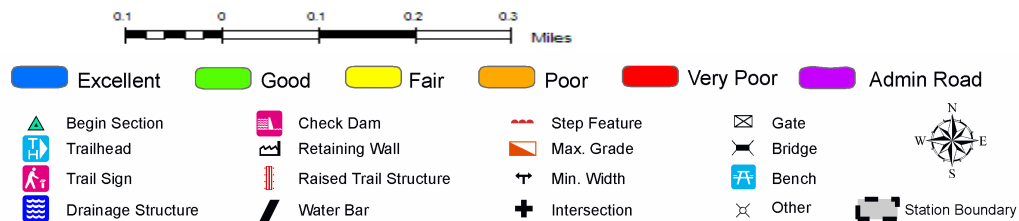
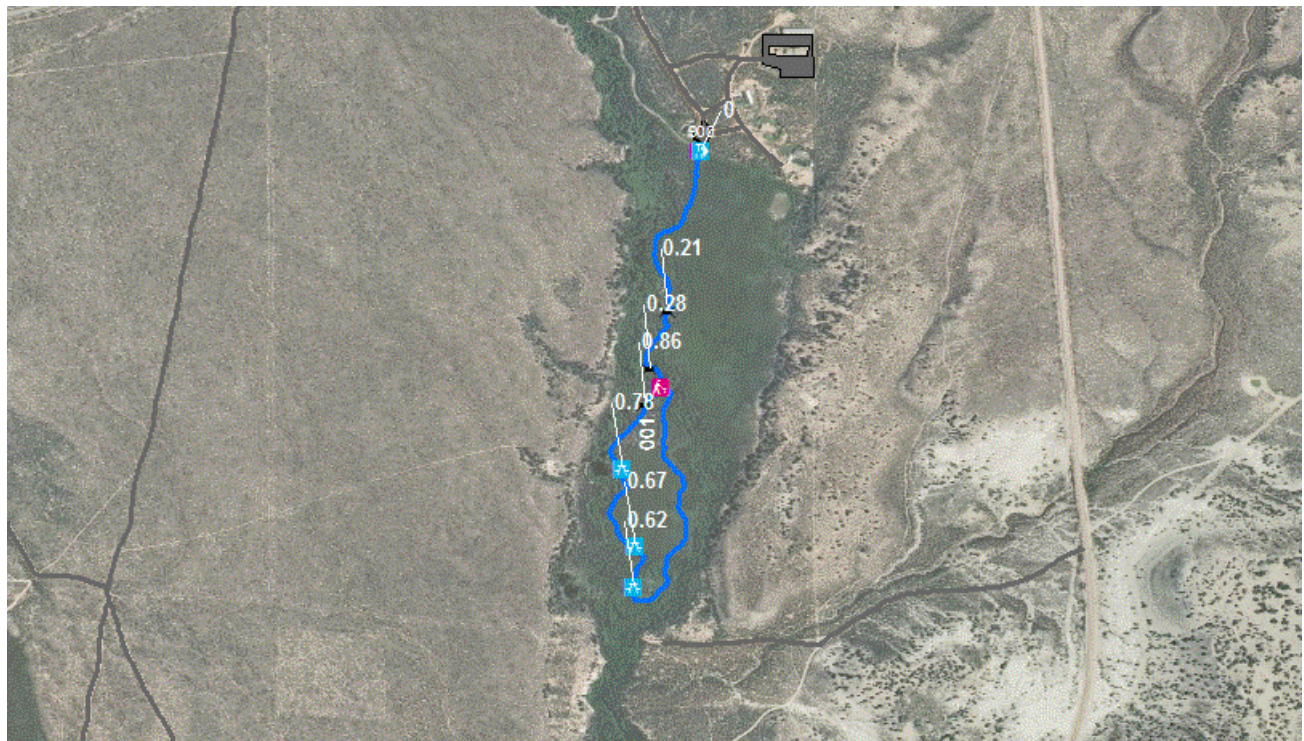
**Total Length:** 1.49 Miles

Section Number	001	002
Section Length (miles)	0.48	1.01
SAMMS Number		
Rating Date	06/20/2011	06/20/2011
<b>Trail Section Information</b>		
Trail Class	TC2	TC3
Surface Type	Native	Admin Road
Surface Firmness	Hard	Paved
Width (inches)	72	72
Average Grade (%)	3.4	3.4
Average X-slope (%)	2.50	2.50
<b>Trail Condition Information</b>		
Deferred Maintenance		
CRV	\$49,979	
FCI	0.00	
Condition	Excellent	

### Trail Condition TOTALS

Deferred Maintenance	CRV	FCI	Condition
	\$49,979	0.00	Excellent

## TRAIL CONDITION



**Trail Name:** Beaver Creek Trail  
**Trail Number:** T300

**Refuge Name:** Browns Park NWR  
**Region:** 6

**Total Length:** 0.89 Miles

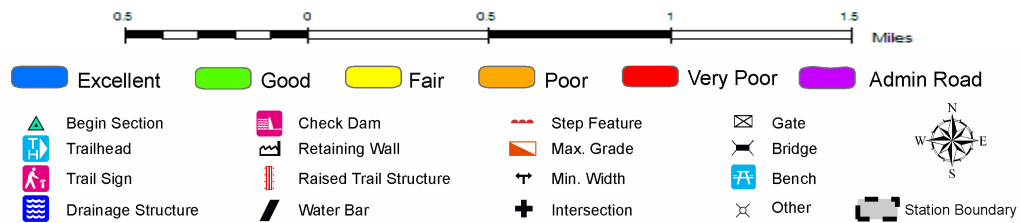
Section Number	001
Section Length (miles)	0.89
SAMMS Number	
Rating Date	06/20/2011
<b>Trail Section Information</b>	
Trail Class	TC3
Surface Type	Mowed
Surface Firmness	Hard
Width (inches)	60
Average Grade (%)	5.1
Average X-slope (%)	3.20
<b>Trail Condition Information</b>	
Deferred Maintenance	
CRV	\$19,307
FCI	0.00
Condition	Excellent

### Trail Condition TOTALS

Deferred Maintenance	CRV	FCI	Condition
	\$19,307	0.00	Excellent



## TRAIL CONDITION



**Trail Name:** Hoy Dike Trail  
**Trail Number:** T301

**Refuge Name:** Browns Park NWR  
**Region:** 6

**Total Length:** 2.95 Miles

Section Number	001
Section Length (miles)	2.95
SAMMS Number	
Rating Date	06/20/2011
<b>Trail Section Information</b>	
Trail Class	TC3
Surface Type	Admin Road
Surface Firmness	Paved
Width (inches)	132
Average Grade (%)	3.2
Average X-slope (%)	1.40
<b>Trail Condition Information</b>	
Deferred Maintenance	
CRV	
FCI	
Condition	

### Trail Condition TOTALS

Deferred Maintenance	CRV	FCI	Condition

## TRAIL DEFICIENCY

No Deficiencies

## PHOTOGRAPHIC SHEET

TRAIL NUMBER: T200  
STATION: Browns Park NWR  
DATE: 06/20/2011



Photo # BRPA\_C2\_0498 - MP 0.00 - Trailhead

TRAIL NUMBER: T200  
STATION: Browns Park NWR  
DATE: 06/20/2011



Photo # BRPA\_C2\_0499 - MP 0.48 - Begin Section



## PHOTOGRAPHIC SHEET

TRAIL NUMBER: T300  
STATION: Browns Park NWR  
DATE: 06/20/2011



Photo # BRPA\_C2\_0488 - MP 0.00 - Sign

TRAIL NUMBER: T300  
STATION: Browns Park NWR  
DATE: 06/20/2011



Photo # BRPA\_C2\_0490 - MP 0.00 - Trailhead



## PHOTOGRAPHIC SHEET

TRAIL NUMBER: T300  
STATION: Browns Park NWR  
DATE: 06/20/2011



Photo # BRPA\_C2\_0491 - MP 0.21 - Bridge -sf

TRAIL NUMBER: T300  
STATION: Browns Park NWR  
DATE: 06/20/2011



Photo # BRPA\_C2\_0492 - MP 0.28 - Bridge -sf



## PHOTOGRAPHIC SHEET

TRAIL NUMBER: T300  
STATION: Browns Park NWR  
DATE: 06/20/2011



Photo # BRPA\_C2\_0493 - MP 0.31 - Sign

TRAIL NUMBER: T300  
STATION: Browns Park NWR  
DATE: 06/20/2011



Photo # BRPA\_C2\_0495 - MP 0.86 - Bridge -sf



## PHOTOGRAPHIC SHEET

TRAIL NUMBER: T301  
STATION: Browns Park NWR  
DATE: 06/20/2011



Photo # BRPA\_C2\_0496 - MP 0.00 - Sign

TRAIL NUMBER: T301  
STATION: Browns Park NWR  
DATE: 06/20/2011



Photo # BRPA\_C2\_0497 - MP 0.00 - Trailhead

## Glossary of Terms and Abbreviations

<b>Acc Info</b>	Accessibility information available at trailhead.
<b>Action</b>	Action required to correct deficiency.
<b>Admin Road</b>	Administration Road. Admin Roads signed and advertised as trails are included in the trail inventory but a condition assessment is NOT done.
<b>Alt SAMMS</b>	SAMMS number of Alternate Facility Type.
<b>Alt Type</b>	Alternate Facility Type. Trail lies on a feature such as a levee, dam, administrative road or bridge, which has a separate SAMMS number.
<b>AvgGrade</b>	The average grade of the trail (%). The average of five measurements for trails less than two miles and ten measurements for trails equal to or greater than 2 miles.
<b>AvgSlope</b>	The average cross-slope of the trail (%). The average of five measurements for trails less than two miles and ten measurements for trails equal to or greater than 2 miles.
<b>Check Dam</b>	A small dam constructed across a drainage ditch, swale, or channel to lower the speed of concentrated flows.
<b>Condition</b>	Subjective rating of trail based on Facility Condition Index (FCI): FCI $\leq$ .01 = Excellent FCI .02 - .05 = Good FCI .06 - .10 = Fair FCI .11 - .20 = Poor FCI $>$ .20 = Failed
<b>Crib Wall</b>	Retaining wall.
<b>Current Replacement Value (CRV)</b>	The value of an asset determined by the estimated cost of replacing it.
<b>Def type</b>	Deficiency Type: Trail Structure, Drainage, Erosion, Obstacle, Trail Location, Other.
<b>Deferred Maintenance (DM)</b>	Maintenance that was not performed when scheduled.

<b>Elem ID</b>	Unique identifier for each trail section: Org Code-Trail Number-Section Number.
<b>Facility Condition Index (FCI)</b>	DM/CRV
<b>Grouped Features</b>	Grouped features include non-unique signs (mileposts, interpretive signs, species identification, etc.), water bars, check dams, steps, drain and drainage dips. For any given grouped feature, a GPS point and photo are taken for the first occurrence only and the total number of features in the group are entered into the “quantity” field of the data dictionary.
<b>Info Type</b>	Type of accessibility information available at trailhead: brochure, sign or other.
<b>Item</b>	Item on which the “Action” (see above) will be performed.
<b>Manage_Use</b>	Managed use of the trail: HIKE, BIKE, NSPC (non-specified), PACK, POR (portage), SNOWSHOE, XSKI (cross-country ski), OTHER.
<b>MP</b>	Distance of a trail feature or deficiency from the Trailhead.
<b>Puncheon</b>	Log footbridge used in area of poor drainage.
<b>Raised Trail Structure</b>	Boardwalk, Turnpike, Puncheon.
<b>T Class</b>	Trail Class: I-V (see Appendix ? for trail class descriptions).
<b>Tr Desig</b>	Trail Designation: Standard (Std), National Historic Trail (NHT), National Recreation Trail (NRT), National Scenic Trail (NST).
<b>Turnpike</b>	Trail tread elevated with dirt, rock or other aggregate from parallel side ditches and held in place by logs.