

# The Trail Inventory of Detroit Lakes WMD

## Detroit Lakes, MN



Prepared By:  
Federal Highway Administration  
Central Federal Lands Highway Division  
September, 2012



# TABLE OF CONTENTS

<b><u>SECTION</u></b>	<b><u>PAGE</u></b>
<b>I.     <u>TRAIL AND TRAIL FEATURE SUMMARIES</u></b>	1 - 1
<b>II.    <u>TRAIL LOCATION MAPS</u></b>	2 - 1
<b>III.   <u>TRAIL IDENTIFICATION LIST</u></b>	3 - 1
<b>IV.    <u>TRAIL CONDITION RATING SHEETS</u></b>	4 - 1
<b>V.     <u>TRAIL DEFICIENCY RATING SHEETS</u></b>	5 - 1
<b>VI.    <u>PHOTOGRAPHIC SHEETS</u></b>	6 - 1
<b>VII.   <u>GLOSSARY</u></b>	i

# Detroit Lakes WMD

## Trail and Trail Feature Summaries

Trail Miles and Percentages by Surface Type and Condition

Trail Surface Type	Excellent		Others		Total
	Miles	%	Miles	%	Miles
Gravel	0.10	100%	0.00	0%	0.10
Asphalt	0.08	100%	0.00	0%	0.08
Admin Road	0.00	0%	0.98	100%	0.98
<b>Total</b>	<b>0.18</b>	<b>16%</b>	<b>0.98</b>	<b>84%</b>	<b>1.16</b>

Trail Miles and Percentages by Trail Classification and Condition

Trail Classification	Excellent		Others		Total
	Miles	%	Miles	%	Miles
TC4	0.10	9%	0.98	91%	1.08
TC5	0.08	100%	0.00	0%	0.08
<b>Total</b>	<b>0.18</b>	<b>16%</b>	<b>0.98</b>	<b>84%</b>	<b>1.16</b>

\*Admin Roads are included in the inventory but are not rated for condition.

## Trail Features

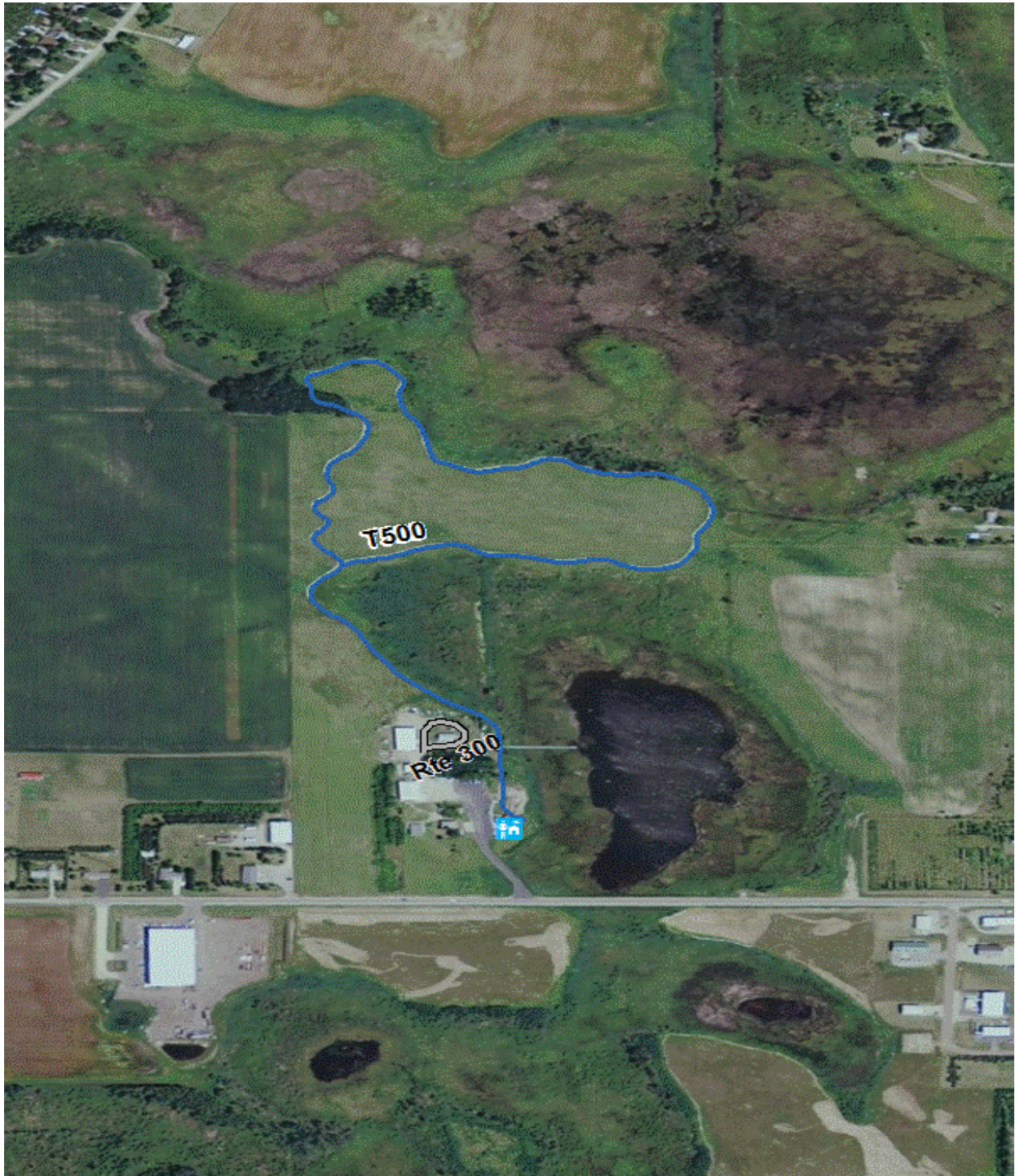
Trail Number	Feature Type	Quantity	Grouped Feature	Milepost	Photo
T500	Trailhead	1	No	0.00	DELA_C3_0435
T500	Begin Section	1	No	0.08	DELA_C3_1114
T500	Begin Section	1	No	0.18	DELA_C3_1115
T500	Begin Section	1	No	0.41	DELA_C3_1116
T500	Begin Section	1	No	0.94	DELA_C3_1118
T500	Bench	1	No	0.95	
T500	Max Grade- %	4	No	1.13	

sf - square feet

lf - linear feet

cf - cubic feet

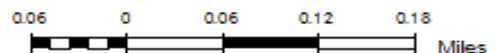
# Detroit Lakes WMD Trail Location Map



Station Boundary



HQ/VC



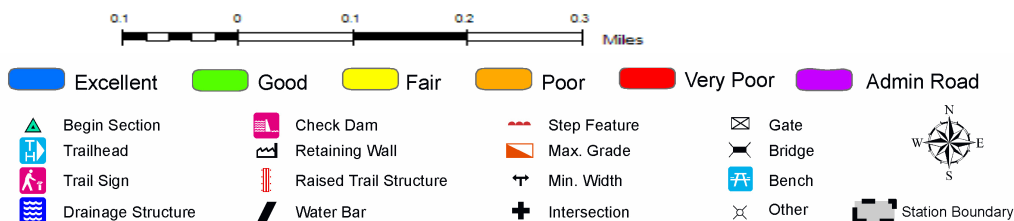
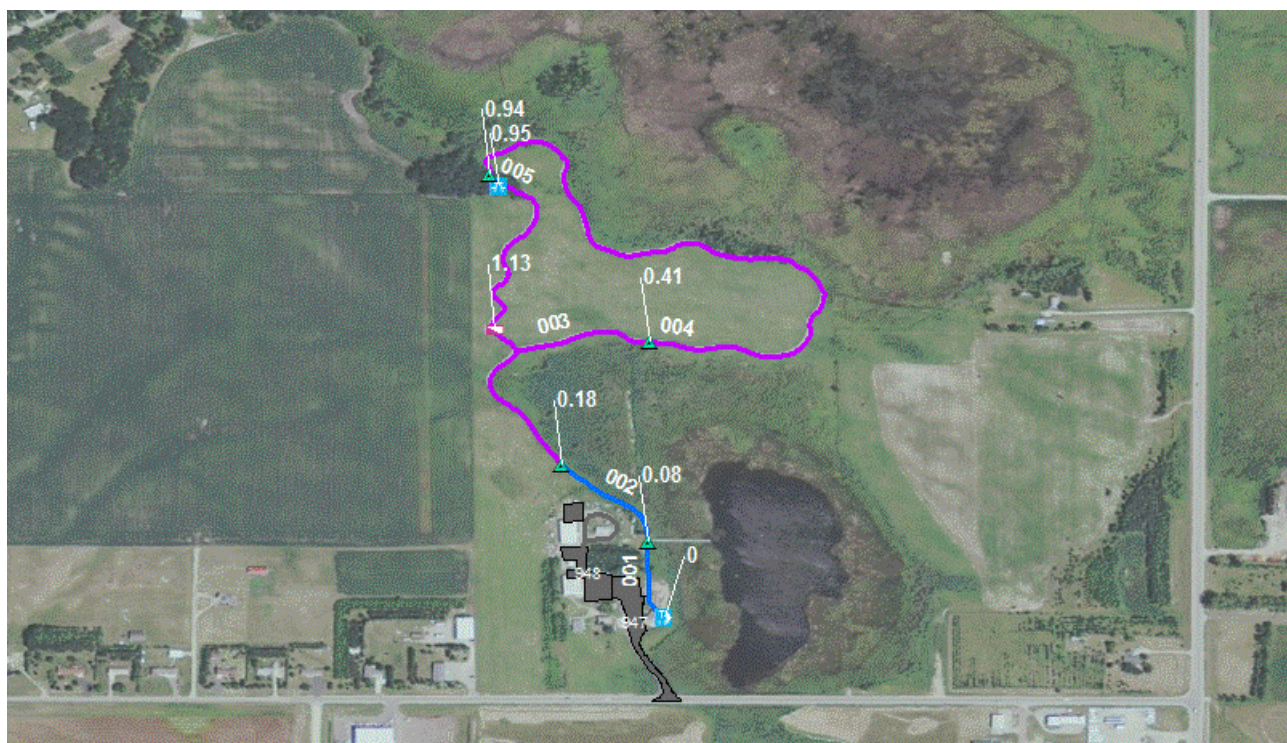
## Trails ID

Station Name: Detroit Lakes WMD

Org Code: 32586

Trail Number	Trail Name	Surface Type	SAMMS	Trail Mileage	Trail Description (Begin and End point of trail)
T500	Prairie Marsh Interpretive Trail	Admin Road	10058635	0.98	From Headquarters Parking (Rte 947) to End of Loop
T500	Prairie Marsh Interpretive Trail	Asphalt	10058635	0.08	From Headquarters Parking (Rte 947) to End of Loop
T500	Prairie Marsh Interpretive Trail	Gravel	10058635	0.10	From Headquarters Parking (Rte 947) to End of Loop

## TRAIL CONDITION



**Trail Name:** Prairie Marsh Interpretive Trail

**Refuge Name:** Detroit Lakes WMD

**Trail Number:** T500

**Region:** 3

**Total Length:** 1.16 Miles

Section Number	001	002	003	004	005
Section Length (miles)	0.08	0.10	0.23	0.53	0.22
SAMMS Number	10058635	10058635	10058635	10058635	10058635
Rating Date	07/12/2006	07/12/2006	07/12/2006	07/12/2006	07/12/2006
<b>Trail Section Information</b>					
Trail Class	TC5	TC4	TC4	TC4	TC4
Surface Type	Asphalt	Gravel	Admin Road	Admin Road	Admin Road
Surface Firmness	Paved	Hard	Firm	Firm	Hard
Width (inches)	95	102	120	120	120
Average Grade (%)	2.2	2.2	2.2	2.2	2.2
Average X-slope (%)	4.10	4.10	4.10	4.10	4.10
<b>Trail Condition Information</b>					
Deferred Maintenance					
CRV	\$23,933	\$25,027			
FCI	0.00	0.00			
Condition	Excellent	Excellent			

### Trail Condition TOTALS

Deferred Maintenance	CRV	FCI	Condition
	\$48,960	0.00	Excellent

## TRAIL DEFICIENCY

No Deficiencies

## PHOTOGRAPHIC SHEET

TRAIL NUMBER: T500  
STATION: Detroit Lakes WMD  
DATE: 07/31/2012



Photo # DELA\_C3\_0435 - MP 0.00 - Trailhead

TRAIL NUMBER: T500  
STATION: Detroit Lakes WMD  
DATE: 07/12/2006



Photo # DELA\_C3\_1114 - MP 0.08 - Begin Section

## PHOTOGRAPHIC SHEET

TRAIL NUMBER: T500  
STATION: Detroit Lakes WMD  
DATE: 07/12/2006



Photo # DELA\_C3\_1115 - MP 0.18 - Begin Section

TRAIL NUMBER: T500  
STATION: Detroit Lakes WMD  
DATE: 07/12/2006



Photo # DELA\_C3\_1116 - MP 0.41 - Begin Section

## PHOTOGRAPHIC SHEET

TRAIL NUMBER: T500

STATION: Detroit Lakes WMD

DATE: 07/12/2006



Photo # DELA\_C3\_1118 - MP 0.94 - Begin Section

## Glossary of Terms and Abbreviations

<b>Acc Info</b>	Accessibility information available at trailhead.
<b>Action</b>	Action required to correct deficiency.
<b>Admin Road</b>	Administration Road. Admin Roads signed and advertised as trails are included in the trail inventory but a condition assessment is NOT done.
<b>Alt SAMMS</b>	SAMMS number of Alternate Facility Type.
<b>Alt Type</b>	Alternate Facility Type. Trail lies on a feature such as a levee, dam, administrative road or bridge, which has a separate SAMMS number.
<b>AvgGrade</b>	The average grade of the trail (%). The average of five measurements for trails less than two miles and ten measurements for trails equal to or greater than 2 miles.
<b>AvgSlope</b>	The average cross-slope of the trail (%). The average of five measurements for trails less than two miles and ten measurements for trails equal to or greater than 2 miles.
<b>Check Dam</b>	A small dam constructed across a drainage ditch, swale, or channel to lower the speed of concentrated flows.
<b>Condition</b>	Subjective rating of trail based on Facility Condition Index (FCI): FCI $\leq$ .01 = Excellent FCI .02 - .05 = Good FCI .06 - .10 = Fair FCI .11 - .20 = Poor FCI $>$ .20 = Failed
<b>Crib Wall</b>	Retaining wall.
<b>Current Replacement Value (CRV)</b>	The value of an asset determined by the estimated cost of replacing it.
<b>Def type</b>	Deficiency Type: Trail Structure, Drainage, Erosion, Obstacle, Trail Location, Other.
<b>Deferred Maintenance (DM)</b>	Maintenance that was not performed when scheduled.

<b>Elem ID</b>	Unique identifier for each trail section: Org Code-Trail Number-Section Number.
<b>Facility Condition Index (FCI)</b>	DM/CRV
<b>Grouped Features</b>	Grouped features include non-unique signs (mileposts, interpretive signs, species identification, etc.), water bars, check dams, steps, drain and drainage dips. For any given grouped feature, a GPS point and photo are taken for the first occurrence only and the total number of features in the group are entered into the “quantity” field of the data dictionary.
<b>Info Type</b>	Type of accessibility information available at trailhead: brochure, sign or other.
<b>Item</b>	Item on which the “Action” (see above) will be performed.
<b>Manage_Use</b>	Managed use of the trail: HIKE, BIKE, NSPC (non-specified), PACK, POR (portage), SNOWSHOE, XSKI (cross-country ski), OTHER.
<b>MP</b>	Distance of a trail feature or deficiency from the Trailhead.
<b>Puncheon</b>	Log footbridge used in area of poor drainage.
<b>Raised Trail Structure</b>	Boardwalk, Turnpike, Puncheon.
<b>T Class</b>	Trail Class: I-V (see Appendix ? for trail class descriptions).
<b>Tr Desig</b>	Trail Designation: Standard (Std), National Historic Trail (NHT), National Recreation Trail (NRT), National Scenic Trail (NST).
<b>Turnpike</b>	Trail tread elevated with dirt, rock or other aggregate from parallel side ditches and held in place by logs.