

# **The Trail Inventory of Emiquon NWR Havana, IL**



Prepared By:  
Federal Highway Administration  
Central Federal Lands Highway Division  
December, 2011



# TABLE OF CONTENTS

<b><u>SECTION</u></b>	<b><u>PAGE</u></b>
<b>I.     <u>TRAIL AND TRAIL FEATURE SUMMARIES</u></b>	1 - 1
<b>II.    <u>TRAIL LOCATION MAPS</u></b>	2 - 1
<b>III.   <u>TRAIL IDENTIFICATION LIST</u></b>	3 - 1
<b>IV.    <u>TRAIL CONDITION RATING SHEETS</u></b>	4 - 1
<b>V.     <u>TRAIL DEFICIENCY RATING SHEETS</u></b>	5 - 1
<b>VI.    <u>PHOTOGRAPHIC SHEETS</u></b>	6 - 1
<b>VII.   <u>GLOSSARY</u></b>	i

# Emiquon NWR

## Trail and Trail Feature Summaries

Trail Miles and Percentages by Surface Type and Condition

Trail Surface Type	Excellent		Others		Total
	Miles	%	Miles	%	Miles
Native	0.68	100%	0.00	0%	0.68
Mowed	5.84	100%	0.00	0%	5.84
Admin Road	0.00	0%	0.77	100%	0.77
Total	6.52	89%	0.77	11%	7.29

Trail Miles and Percentages by Trail Classification and Condition

Trail Classification	Excellent		Others		Total
	Miles	%	Miles	%	Miles
TC3	2.25	92%	0.20	8%	2.45
TC4	4.27	88%	0.57	12%	4.84
Total	6.52	89%	0.77	11%	7.29

\*Admin Roads are included in the inventory but are not rated for condition.

## Trail Features

Trail Number	Feature Type	Quantity	Grouped Feature	Milepost	Photo
T300	Trailhead	1	No	0.00	EMIQ_C2_1934
T300	Begin Section	1	No	0.00	EMIQ_C2_1936
T300	Sign	5	No	0.00	EMIQ_C2_1935
T300	Culvert -lf	100	No	0.24	EMIQ_C2_0861
T300	Gate	1	No	0.30	EMIQ_C2_0862
T300	Sign	4	Yes	0.34	EMIQ_C2_0863
T300	Begin Section	1	No	0.50	EMIQ_C2_1940
T300	Sign	1	No	0.50	EMIQ_C2_1939
T300	Lookout/Ob Deck	1	No	1.10	
T300	Gate	1	No	1.17	EMIQ_C2_0864
T400	Trailhead	1	No	0.00	EMIQ_C2_0857
T400	Begin Section	1	No	3.43	EMIQ_C2_0858
T401	Trailhead	1	No	0.00	EMIQ_C2_0859
T401	Max Grade- %	6	No	0.01	
T401	Water Control Struc	1	No	0.10	
T401	Water Control Struc	1	No	0.15	
T402	Trailhead	1	No	0.00	EMIQ_C2_0860
T402	Max Grade- %	6	No	0.34	

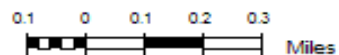
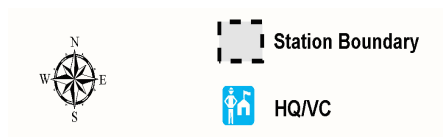
sf - square feet

lf - linear feet

cf - cubic feet



# Emiquon NWR Trail Location Map



## Trails ID

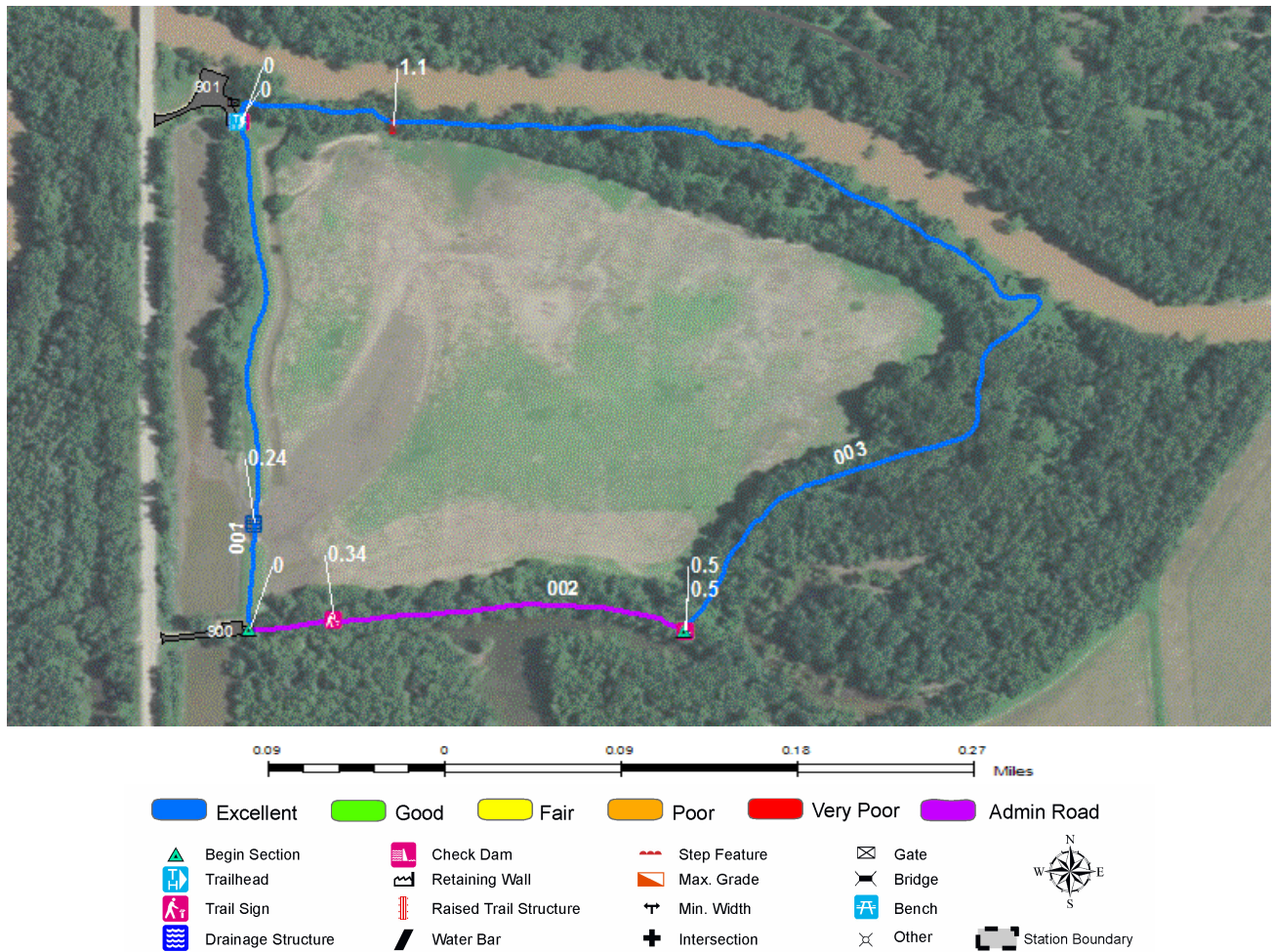
**Station Name:** Emiquon NWR

**Org Code:** 33654

Trail Number	Trail Name	Surface Type	SAMMS	Trail Mileage	Trail Description (Begin and End point of trail)
T300	Belle Rose Trail	Admin Road	10014055	0.20	From North Spoon River Parking Lot (Rte 901) to End of Trail Loop
T300	Belle Rose Trail	Mowed	10014055	0.30	From North Spoon River Parking Lot (Rte 901) to End of Trail Loop
T300	Belle Rose Trail	Native	10014055	0.68	From North Spoon River Parking Lot (Rte 901) to End of Trail Loop
T400	South Globe Trail	Mowed	10035964	4.27	From County Road 9, East of Parking (Rte. 902) to End of Loop
T401	Wilder Trail	Mowed	10052373	1.27	Wilder Parking (Rte. 903) to End of Trail
T402	Oxbow Trail	Admin Road	10052374	0.57	Oxbow Access Parking (Rte. 906) to End of Trail



## TRAIL CONDITION



**Trail Name:** Belle Rose Trail  
**Trail Number:** T300

**Refuge Name:** Emiquon NWR  
**Region:** 3

**Total Length:** 1.18 Miles

Section Number	001	002	003
Section Length (miles)	0.30	0.20	0.68
SAMMS Number	10014055	10014055	10014055
Rating Date	10/23/2006	10/23/2006	10/23/2006
<b>Trail Section Information</b>			
Trail Class	TC3	TC3	TC3
Surface Type	Mowed	Admin Road	Native
Surface Firmness	Firm	Firm	Firm
Width (inches)	180	96	84
Average Grade (%)	2.8	2.8	2.8
Average X-slope (%)	1.80	1.80	1.80
<b>Trail Condition Information</b>			
Deferred Maintenance			
CRV	\$26,580		\$112,465
FCI	0.00		0.00
Condition	Excellent		Excellent

### Trail Condition TOTALS

Deferred Maintenance	CRV	FCI	Condition
	\$139,046	0.00	Excellent

## TRAIL CONDITION



**Trail Name:** South Globe Trail  
**Trail Number:** T400

**Refuge Name:** Emiquon NWR  
**Region:** 3

**Total Length:** 4.27 Miles

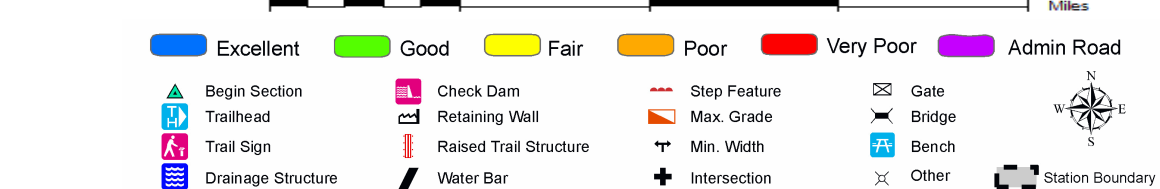
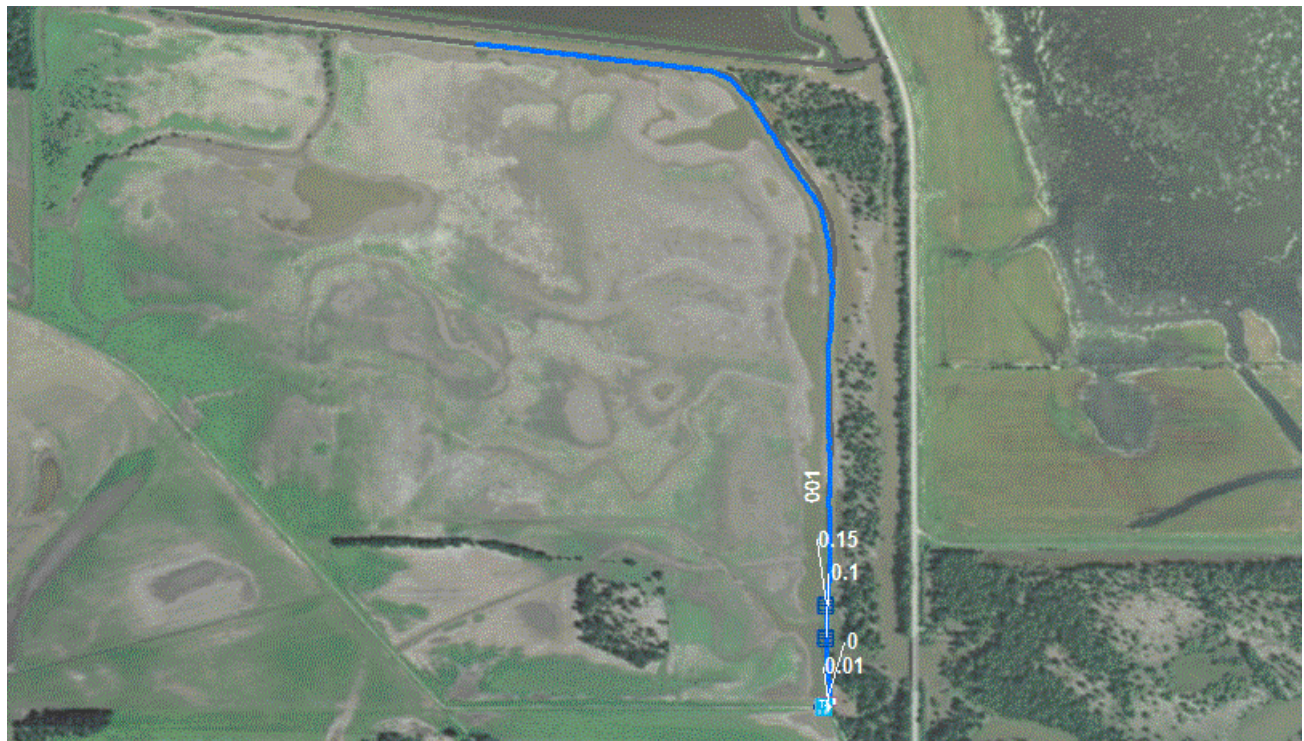
Section Number	001	002
Section Length (miles)	3.43	0.84
SAMMS Number	10035964	10035964
Rating Date	09/08/2011	09/08/2011
<b>Trail Section Information</b>		
Trail Class	TC4	TC4
Surface Type	Mowed	Mowed
Surface Firmness	Hard	Hard
Width (inches)	96	120
Average Grade (%)	2.3	2.3
Average X-slope (%)	1.50	1.50
<b>Trail Condition Information</b>		
Deferred Maintenance		
CRV	\$162,081	\$49,617
FCI	0.00	0.00
Condition	Excellent	Excellent

### Trail Condition TOTALS

Deferred Maintenance	CRV	FCI	Condition
	\$211,697	0.00	Excellent



## TRAIL CONDITION



**Trail Name:** Wilder Trail  
**Trail Number:** T401

**Refuge Name:** Emiquon NWR  
**Region:** 3

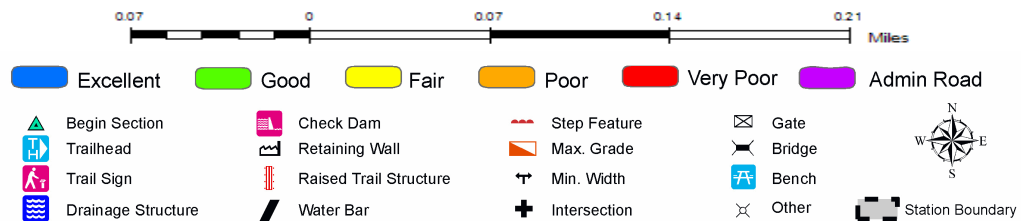
**Total Length:** 1.27 Miles

Section Number	001
Section Length (miles)	1.27
SAMMS Number	10052373
Rating Date	09/08/2011
<b>Trail Section Information</b>	
Trail Class	TC3
Surface Type	Mowed
Surface Firmness	Hard
Width (inches)	96
Average Grade (%)	1.6
Average X-slope (%)	1.30
<b>Trail Condition Information</b>	
Deferred Maintenance	
CRV	\$60,013
FCI	0.00
Condition	Excellent

### Trail Condition TOTALS

Deferred Maintenance	CRV	FCI	Condition
	\$60,013	0.00	Excellent

## TRAIL CONDITION



**Trail Name:** Oxbow Trail  
**Trail Number:** T402

**Refuge Name:** Emiquon NWR  
**Region:** 3

**Total Length:** 0.57 Miles

Section Number	001
Section Length (miles)	0.57
SAMMS Number	10052374
Rating Date	09/08/2011
<b>Trail Section Information</b>	
Trail Class	TC4
Surface Type	Admin Road
Surface Firmness	Hard
Width (inches)	120
Average Grade (%)	0.5
Average X-slope (%)	0.30
<b>Trail Condition Information</b>	
Deferred Maintenance	
CRV	
FCI	
Condition	

### Trail Condition TOTALS

Deferred Maintenance	CRV	FCI	Condition

## TRAIL DEFICIENCY

No Deficiencies



## PHOTOGRAPHIC SHEET

TRAIL NUMBER: T300  
STATION: Emiquon NWR  
DATE: 10/23/2006



Photo # EMIQ\_C2\_1935 - MP 0.00 - Sign

TRAIL NUMBER: T300  
STATION: Emiquon NWR  
DATE: 10/23/2006



Photo # EMIQ\_C2\_1934 - MP 0.00 - Trailhead



## PHOTOGRAPHIC SHEET

TRAIL NUMBER: T300  
STATION: Emiquon NWR  
DATE: 09/08/2011



Photo # EMIQ\_C2\_0861 - MP 0.24 - Culvert -lf

TRAIL NUMBER: T300  
STATION: Emiquon NWR  
DATE: 10/23/2006



Photo # EMIQ\_C2\_1936 - MP 0.00 - Begin Section



## PHOTOGRAPHIC SHEET

TRAIL NUMBER: T300  
STATION: Emiquon NWR  
DATE: 09/08/2011



Photo # EMIQ\_C2\_0862 - MP 0.30 - Gate

TRAIL NUMBER: T300  
STATION: Emiquon NWR  
DATE: 09/08/2011



Photo # EMIQ\_C2\_0863 - MP 0.34 - Sign



## PHOTOGRAPHIC SHEET

TRAIL NUMBER: T300  
STATION: Emiquon NWR  
DATE: 10/23/2006



Photo # EMIQ\_C2\_1939 - MP 0.50 - Sign

TRAIL NUMBER: T300  
STATION: Emiquon NWR  
DATE: 10/23/2006



Photo # EMIQ\_C2\_1940 - MP 0.50 - Begin Section



## PHOTOGRAPHIC SHEET

TRAIL NUMBER: T300  
STATION: Emiquon NWR  
DATE: 09/08/2011



Photo # EMIQ\_C2\_0864 - MP 1.17 - Gate

TRAIL NUMBER: T400  
STATION: Emiquon NWR  
DATE: 09/08/2011



Photo # EMIQ\_C2\_0857 - MP 0.00 - Trailhead

## PHOTOGRAPHIC SHEET

TRAIL NUMBER: T400  
STATION: Emiquon NWR  
DATE: 09/08/2011



Photo # EMIQ\_C2\_0858 - MP 3.43 - Begin Section

TRAIL NUMBER: T401  
STATION: Emiquon NWR  
DATE: 09/08/2011



Photo # EMIQ\_C2\_0859 - MP 0.00 - Trailhead



## PHOTOGRAPHIC SHEET

TRAIL NUMBER: T402  
STATION: Emiquon NWR  
DATE: 09/08/2011



Photo # EMIQ\_C2\_0860 - MP 0.00 - Trailhead

## Glossary of Terms and Abbreviations

<b>Acc Info</b>	Accessibility information available at trailhead.
<b>Action</b>	Action required to correct deficiency.
<b>Admin Road</b>	Administration Road. Admin Roads signed and advertised as trails are included in the trail inventory but a condition assessment is NOT done.
<b>Alt SAMMS</b>	SAMMS number of Alternate Facility Type.
<b>Alt Type</b>	Alternate Facility Type. Trail lies on a feature such as a levee, dam, administrative road or bridge, which has a separate SAMMS number.
<b>AvgGrade</b>	The average grade of the trail (%). The average of five measurements for trails less than two miles and ten measurements for trails equal to or greater than 2 miles.
<b>AvgSlope</b>	The average cross-slope of the trail (%). The average of five measurements for trails less than two miles and ten measurements for trails equal to or greater than 2 miles.
<b>Check Dam</b>	A small dam constructed across a drainage ditch, swale, or channel to lower the speed of concentrated flows.
<b>Condition</b>	Subjective rating of trail based on Facility Condition Index (FCI): FCI $\leq$ .01 = Excellent FCI .02 - .05 = Good FCI .06 - .10 = Fair FCI .11 - .20 = Poor FCI $>$ .20 = Failed
<b>Crib Wall</b>	Retaining wall.
<b>Current Replacement Value (CRV)</b>	The value of an asset determined by the estimated cost of replacing it.
<b>Def type</b>	Deficiency Type: Trail Structure, Drainage, Erosion, Obstacle, Trail Location, Other.
<b>Deferred Maintenance (DM)</b>	Maintenance that was not performed when scheduled.

<b>Elem ID</b>	Unique identifier for each trail section: Org Code-Trail Number-Section Number.
<b>Facility Condition Index (FCI)</b>	DM/CRV
<b>Grouped Features</b>	Grouped features include non-unique signs (mileposts, interpretive signs, species identification, etc.), water bars, check dams, steps, drain and drainage dips. For any given grouped feature, a GPS point and photo are taken for the first occurrence only and the total number of features in the group are entered into the “quantity” field of the data dictionary.
<b>Info Type</b>	Type of accessibility information available at trailhead: brochure, sign or other.
<b>Item</b>	Item on which the “Action” (see above) will be performed.
<b>Manage_Use</b>	Managed use of the trail: HIKE, BIKE, NSPC (non-specified), PACK, POR (portage), SNOWSHOE, XSKI (cross-country ski), OTHER.
<b>MP</b>	Distance of a trail feature or deficiency from the Trailhead.
<b>Puncheon</b>	Log footbridge used in area of poor drainage.
<b>Raised Trail Structure</b>	Boardwalk, Turnpike, Puncheon.
<b>T Class</b>	Trail Class: I-V (see Appendix ? for trail class descriptions).
<b>Tr Desig</b>	Trail Designation: Standard (Std), National Historic Trail (NHT), National Recreation Trail (NRT), National Scenic Trail (NST).
<b>Turnpike</b>	Trail tread elevated with dirt, rock or other aggregate from parallel side ditches and held in place by logs.