

# The Trail Inventory of Imperial NWR

Yuma, AZ



Prepared By:  
Federal Highway Administration  
Central Federal Lands Highway Division  
January, 2012



# TABLE OF CONTENTS

<u>SECTION</u>	<u>PAGE</u>
I. <u>TRAIL AND TRAIL FEATURE SUMMARIES</u>	1 - 1
II. <u>TRAIL LOCATION MAPS</u>	2 - 1
III. <u>TRAIL IDENTIFICATION LIST</u>	3 - 1
IV. <u>TRAIL CONDITION RATING SHEETS</u>	4 - 1
V. <u>TRAIL DEFICIENCY RATING SHEETS</u>	5 - 1
VI. <u>PHOTOGRAPHIC SHEETS</u>	6 - 1
VII. <u>GLOSSARY</u>	i

# Imperial NWR

## Trail and Trail Feature Summaries

Trail Miles and Percentages by Surface Type and Condition

Trail Surface Type	Excellent		Total
	Miles	%	Miles
Native	1.27	100%	1.27
Gravel	0.05	100%	0.05
Total	1.32	100%	1.32

Trail Miles and Percentages by Trail Classification and Condition

Trail Classification	Excellent		Total
	Miles	%	Miles
TC2	1.27	100%	1.27
TC5	0.05	100%	0.05
Total	1.32	100%	1.32

\*Admin Roads are included in the inventory but are not rated for condition.

## Trail Features

Trail Number	Feature Type	Quantity	Grouped Feature	Milepost	Photo
T200	Trailhead	1	No	0.00	IMPE_C2_0168
T200	Sign	1	No	0.00	IMPE_C2_0167
T200	Sign	3	No	0.01	IMPE_C2_0169
T200	Sign	1	No	0.06	IMPE_C2_0170
T200	Sign	1	No	0.11	IMPE_C2_0171
T200	Sign	1	No	0.15	IMPE_C2_0172
T200	Sign	1	No	0.27	IMPE_C2_0173
T200	Sign	1	No	0.33	IMPE_C2_0175
T200	Step: Log -each	12	No	0.34	IMPE_C2_0176
T200	Step: Log -each	5	No	0.35	IMPE_C2_0177
T200	Step: Log -each	9	No	0.36	IMPE_C2_0178
T200	Sign	1	No	0.38	IMPE_C2_0179
T200	Begin Section	1	No	0.38	
T200	Bench	1	No	0.40	
T200	Sign	1	No	0.47	IMPE_C2_0180
T200	Step: Log -each	2	No	0.52	IMPE_C2_0181
T200	Bench	1	No	0.58	
T200	Step: Log -each	1	No	0.60	IMPE_C2_0182
T200	Step: Log -each	4	No	0.60	IMPE_C2_0182
T200	Sign	1	No	0.63	IMPE_C2_0183
T200	Step: Log -each	4	No	0.68	IMPE_C2_0184
T200	Sign	1	No	0.70	IMPE_C2_0185
T200	Sign	1	No	0.97	IMPE_C2_0186
T200	Sign	1	No	1.15	IMPE_C2_0187



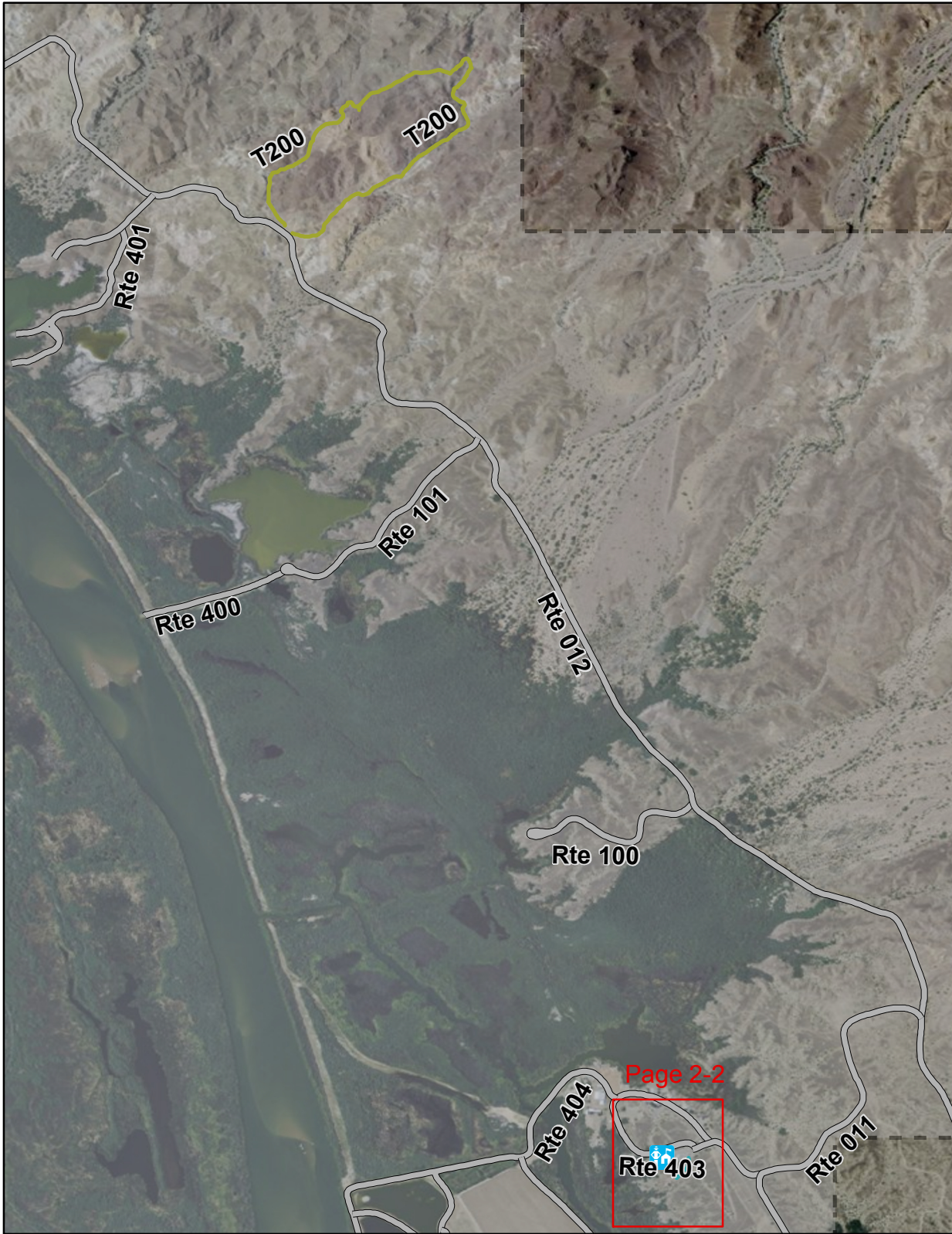
T500	Trailhead	1	No	0.00	IMPE_C2_016 2
T500	Drainage Dips -each	1	No	0.00	IMPE_C2_016 3
T500	Bridge -sf	187	No	0.02	IMPE_C2_016 4
T500	Bridge -sf	187	No	0.04	IMPE_C2_016 5
T500	Lookout/Ob Deck	1	No	0.05	IMPE_C2_016 6

sf - square feet

lf - linear feet

cf - cubic feet

# Imperial NWR Trail Location Map



Station Boundary



HQ/VC

0 0.35 0.7 Miles



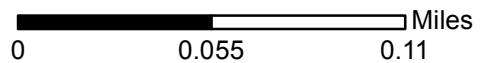
# Imperial NWR Trail Location Map



Station Boundary



HQ/VC



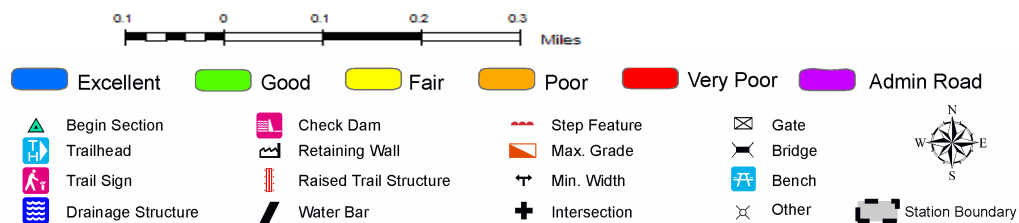
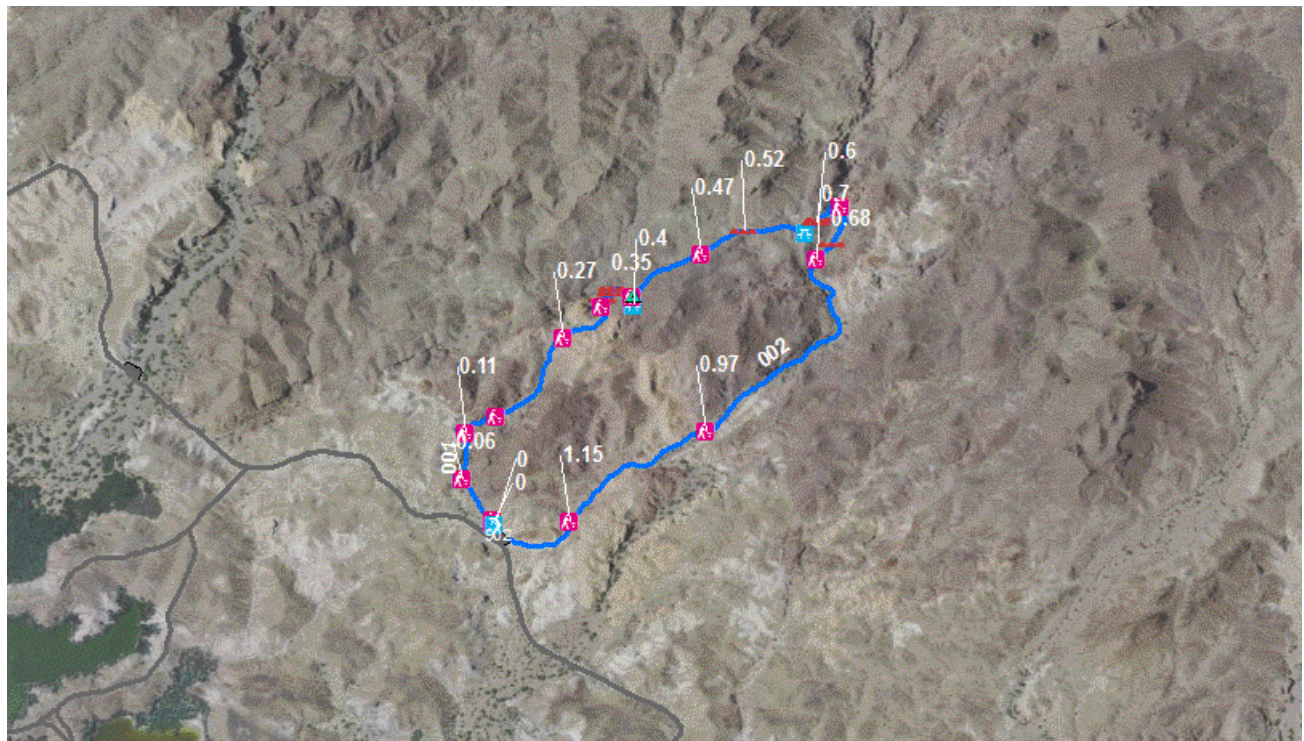
## Trails ID

Station Name: Imperial NWR

Org Code: 22560

Trail Number	Trail Name	Surface Type	SAMMS	Trail Mileage	Trail Description (Begin and End point of trail)
T200	Painted Desert Trail	Native	10009904	1.27	From Painted Desert Trail Parking (Rte 902) to Painted Desert Trail Parking (Rte 902)
T500	Tower Trail	Gravel	N/A	0.05	From Visitor Center Parking (Rte 900) to Observation Tower

## TRAIL CONDITION



**Trail Name:** Painted Desert Trail  
**Trail Number:** T200

**Refuge Name:** Imperial NWR  
**Region:** 2

**Total Length:** 1.27 Miles

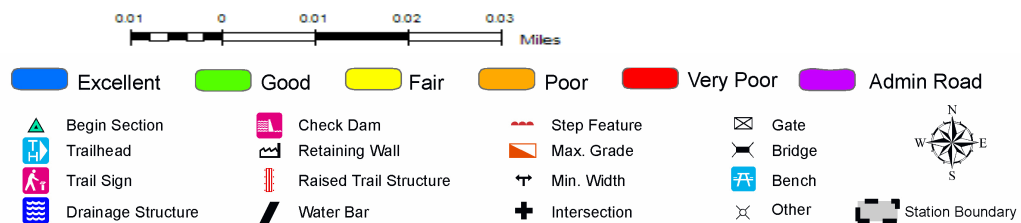
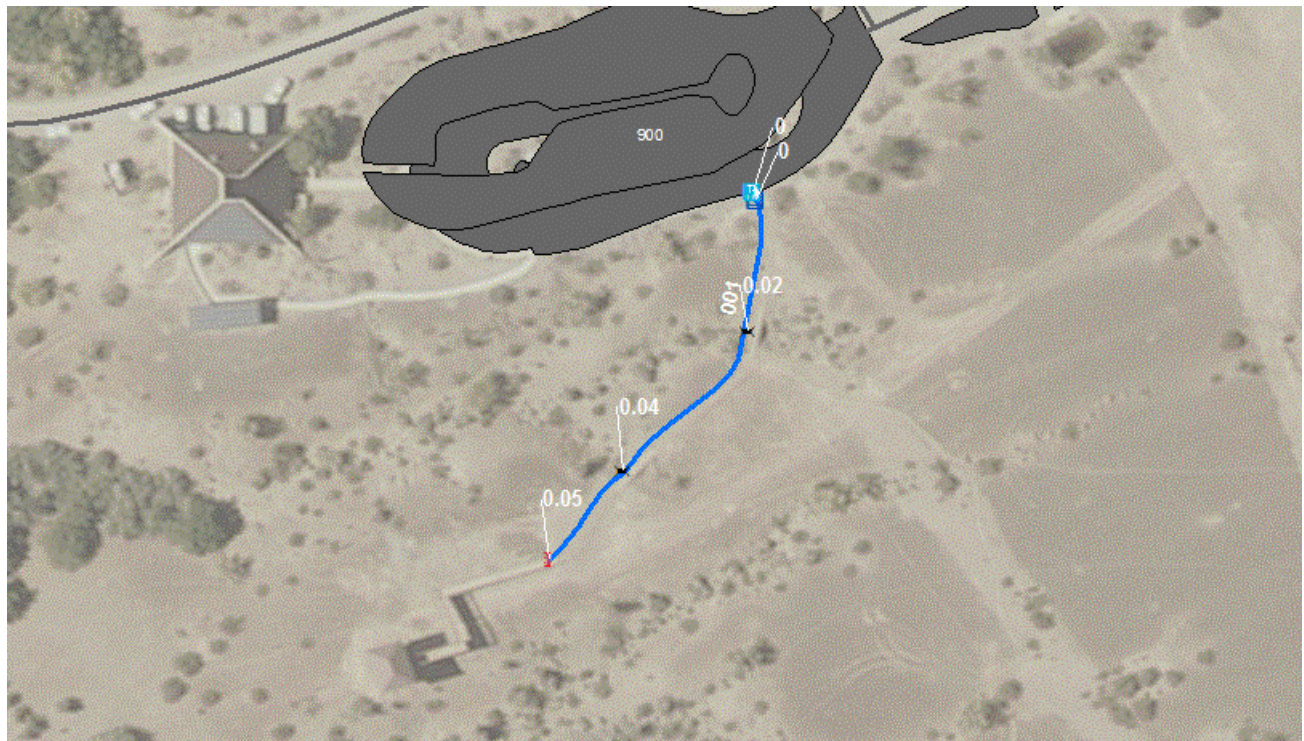
Section Number	001	002
Section Length (miles)	0.40	0.87
SAMMS Number	10009904	10009904
Rating Date	03/13/2006	03/13/2006
<b>Trail Section Information</b>		
Trail Class	TC2	TC2
Surface Type	Native	Native
Surface Firmness	Firm	Firm
Width (inches)	28	28
Average Grade (%)	5.0	5.0
Average X-slope (%)	3.00	3.00
<b>Trail Condition Information</b>		
Deferred Maintenance		
CRV	\$24,903	\$54,049
FCI	0.00	0.00
Condition	Excellent	Excellent

### Trail Condition TOTALS

Deferred Maintenance	CRV	FCI	Condition
	\$78,952	0.00	Excellent



## TRAIL CONDITION



**Trail Name:** Tower Trail  
**Trail Number:** T500

**Refuge Name:** Imperial NWR  
**Region:** 2

**Total Length:** 0.05 Miles

Section Number	001
Section Length (miles)	0.05
SAMMS Number	N/A
Rating Date	03/13/2006
<b>Trail Section Information</b>	
Trail Class	TC5
Surface Type	Gravel
Surface Firmness	Hard
Width (inches)	72
Average Grade (%)	2.0
Average X-slope (%)	1.00
<b>Trail Condition Information</b>	
Deferred Maintenance	
CRV	\$9,207
FCI	0.00
Condition	Excellent

### Trail Condition TOTALS

Deferred Maintenance	CRV	FCI	Condition
	\$9,207	0.00	Excellent

## TRAIL DEFICIENCY

No Deficiencies



## PHOTOGRAPHIC SHEET

TRAIL NUMBER: T200  
STATION: Imperial NWR  
DATE: 03/13/2006



Photo # IMPE\_C2\_0168 - MP 0.00 - Trailhead

TRAIL NUMBER: T200  
STATION: Imperial NWR  
DATE: 03/13/2006



Photo # IMPE\_C2\_0167 - MP 0.00 - Sign



## PHOTOGRAPHIC SHEET

TRAIL NUMBER: T200  
STATION: Imperial NWR  
DATE: 03/13/2006



Photo # IMPE\_C2\_0169 - MP 0.01 - Sign

TRAIL NUMBER: T200  
STATION: Imperial NWR  
DATE: 03/13/2006



Photo # IMPE\_C2\_0170 - MP 0.06 - Sign



## PHOTOGRAPHIC SHEET

TRAIL NUMBER: T200  
STATION: Imperial NWR  
DATE: 03/13/2006



Photo # IMPE\_C2\_0171 - MP 0.11 - Sign

TRAIL NUMBER: T200  
STATION: Imperial NWR  
DATE: 03/13/2006



Photo # IMPE\_C2\_0172 - MP 0.15 - Sign



## PHOTOGRAPHIC SHEET

TRAIL NUMBER: T200  
STATION: Imperial NWR  
DATE: 03/13/2006



Photo # IMPE\_C2\_0173 - MP 0.27 - Sign

TRAIL NUMBER: T200  
STATION: Imperial NWR  
DATE: 03/13/2006



Photo # IMPE\_C2\_0175 - MP 0.33 - Sign



## PHOTOGRAPHIC SHEET

TRAIL NUMBER: T200  
STATION: Imperial NWR  
DATE: 03/13/2006



Photo # IMPE\_C2\_0176 - MP 0.34 - Step: Log -each

TRAIL NUMBER: T200  
STATION: Imperial NWR  
DATE: 03/13/2006



Photo # IMPE\_C2\_0177 - MP 0.35 - Step: Log -each



## PHOTOGRAPHIC SHEET

TRAIL NUMBER: T200  
STATION: Imperial NWR  
DATE: 03/13/2006



Photo # IMPE\_C2\_0178 - MP 0.36 - Step: Log -each

TRAIL NUMBER: T200  
STATION: Imperial NWR  
DATE: 03/13/2006



Photo # IMPE\_C2\_0179 - MP 0.38 - Sign



## PHOTOGRAPHIC SHEET

TRAIL NUMBER: T200  
STATION: Imperial NWR  
DATE: 03/13/2006



Photo # IMPE\_C2\_0180 - MP 0.47 - Sign

TRAIL NUMBER: T200  
STATION: Imperial NWR  
DATE: 03/13/2006



Photo # IMPE\_C2\_0181 - MP 0.52 - Step: Log -each



## PHOTOGRAPHIC SHEET

TRAIL NUMBER: T200  
STATION: Imperial NWR  
DATE: 03/13/2006



Photo # IMPE\_C2\_0182 - MP 0.60 - Step: Log -each

TRAIL NUMBER: T200  
STATION: Imperial NWR  
DATE: 03/13/2006



Photo # IMPE\_C2\_0182 - MP 0.60 - Step: Log -each



## PHOTOGRAPHIC SHEET

TRAIL NUMBER: T200  
STATION: Imperial NWR  
DATE: 03/13/2006



Photo # IMPE\_C2\_0183 - MP 0.63 - Sign

TRAIL NUMBER: T200  
STATION: Imperial NWR  
DATE: 03/13/2006



Photo # IMPE\_C2\_0184 - MP 0.68 - Step: Log -each



## PHOTOGRAPHIC SHEET

TRAIL NUMBER: T200  
STATION: Imperial NWR  
DATE: 03/13/2006



Photo # IMPE\_C2\_0185 - MP 0.70 - Sign

TRAIL NUMBER: T200  
STATION: Imperial NWR  
DATE: 03/13/2006



Photo # IMPE\_C2\_0186 - MP 0.97 - Sign



## PHOTOGRAPHIC SHEET

TRAIL NUMBER: T200  
STATION: Imperial NWR  
DATE: 03/13/2006



Photo # IMPE\_C2\_0187 - MP 1.15 - Sign

TRAIL NUMBER: T500  
STATION: Imperial NWR  
DATE: 03/13/2006



Photo # IMPE\_C2\_0162 - MP 0.00 - Trailhead



## PHOTOGRAPHIC SHEET

TRAIL NUMBER: T500  
STATION: Imperial NWR  
DATE: 03/13/2006



Photo # IMPE\_C2\_0163 - MP 0.00 - Drainage Dips -each

TRAIL NUMBER: T500  
STATION: Imperial NWR  
DATE: 03/13/2006



Photo # IMPE\_C2\_0164 - MP 0.02 - Bridge -sf



## PHOTOGRAPHIC SHEET

TRAIL NUMBER: T500  
STATION: Imperial NWR  
DATE: 03/13/2006



Photo # IMPE\_C2\_0165 - MP 0.04 - Bridge -sf

TRAIL NUMBER: T500  
STATION: Imperial NWR  
DATE: 03/13/2006



Photo # IMPE\_C2\_0166 - MP 0.05 - Lookout/Ob Deck

## Glossary of Terms and Abbreviations

<b>Acc Info</b>	Accessibility information available at trailhead.
<b>Action</b>	Action required to correct deficiency.
<b>Admin Road</b>	Administration Road. Admin Roads signed and advertised as trails are included in the trail inventory but a condition assessment is NOT done.
<b>Alt SAMMS</b>	SAMMS number of Alternate Facility Type.
<b>Alt Type</b>	Alternate Facility Type. Trail lies on a feature such as a levee, dam, administrative road or bridge, which has a separate SAMMS number.
<b>AvgGrade</b>	The average grade of the trail (%). The average of five measurements for trails less than two miles and ten measurements for trails equal to or greater than 2 miles.
<b>AvgSlope</b>	The average cross-slope of the trail (%). The average of five measurements for trails less than two miles and ten measurements for trails equal to or greater than 2 miles.
<b>Check Dam</b>	A small dam constructed across a drainage ditch, swale, or channel to lower the speed of concentrated flows.
<b>Condition</b>	Subjective rating of trail based on Facility Condition Index (FCI): FCI $\leq$ .01 = Excellent FCI .02 - .05 = Good FCI .06 - .10 = Fair FCI .11 - .20 = Poor FCI $>$ .20 = Failed
<b>Crib Wall</b>	Retaining wall.
<b>Current Replacement Value (CRV)</b>	The value of an asset determined by the estimated cost of replacing it.
<b>Def type</b>	Deficiency Type: Trail Structure, Drainage, Erosion, Obstacle, Trail Location, Other.
<b>Deferred Maintenance (DM)</b>	Maintenance that was not performed when scheduled.

<b>Elem ID</b>	Unique identifier for each trail section: Org Code-Trail Number-Section Number.
<b>Facility Condition Index (FCI)</b>	DM/CRV
<b>Grouped Features</b>	Grouped features include non-unique signs (mileposts, interpretive signs, species identification, etc.), water bars, check dams, steps, drain and drainage dips. For any given grouped feature, a GPS point and photo are taken for the first occurrence only and the total number of features in the group are entered into the “quantity” field of the data dictionary.
<b>Info Type</b>	Type of accessibility information available at trailhead: brochure, sign or other.
<b>Item</b>	Item on which the “Action” (see above) will be performed.
<b>Manage_Use</b>	Managed use of the trail: HIKE, BIKE, NSPC (non-specified), PACK, POR (portage), SNOWSHOE, XSKI (cross-country ski), OTHER.
<b>MP</b>	Distance of a trail feature or deficiency from the Trailhead.
<b>Puncheon</b>	Log footbridge used in area of poor drainage.
<b>Raised Trail Structure</b>	Boardwalk, Turnpike, Puncheon.
<b>T Class</b>	Trail Class: I-V (see Appendix ? for trail class descriptions).
<b>Tr Desig</b>	Trail Designation: Standard (Std), National Historic Trail (NHT), National Recreation Trail (NRT), National Scenic Trail (NST).
<b>Turnpike</b>	Trail tread elevated with dirt, rock or other aggregate from parallel side ditches and held in place by logs.