

# The Trail Inventory of Iron River NFH Iron River, WI



Prepared By:  
Federal Highway Administration  
Central Federal Lands Highway Division  
January, 2012



# TABLE OF CONTENTS

<b><u>SECTION</u></b>	<b><u>PAGE</u></b>
<b>I.     <u>TRAIL AND TRAIL FEATURE SUMMARIES</u></b>	1 - 1
<b>II.    <u>TRAIL LOCATION MAPS</u></b>	2 - 1
<b>III.   <u>TRAIL IDENTIFICATION LIST</u></b>	3 - 1
<b>IV.    <u>TRAIL CONDITION RATING SHEETS</u></b>	4 - 1
<b>V.     <u>TRAIL DEFICIENCY RATING SHEETS</u></b>	5 - 1
<b>VI.    <u>PHOTOGRAPHIC SHEETS</u></b>	6 - 1
<b>VII.   <u>GLOSSARY</u></b>	i

# Iron River NFH

## Trail and Trail Feature Summaries

Trail Miles and Percentages by Surface Type and Condition

Trail Surface Type	Excellent		Total
	Miles	%	Miles
Gravel	0.37	100%	0.37
Mowed	2.17	100%	2.17
Total	2.54	100%	2.54

Trail Miles and Percentages by Trail Classification and Condition

Trail Classification	Excellent		Total
	Miles	%	Miles
TC3	2.17	100%	2.17
TC4	0.37	100%	0.37
Total	2.54	100%	2.54

\*Admin Roads are included in the inventory but are not rated for condition.

## Trail Features

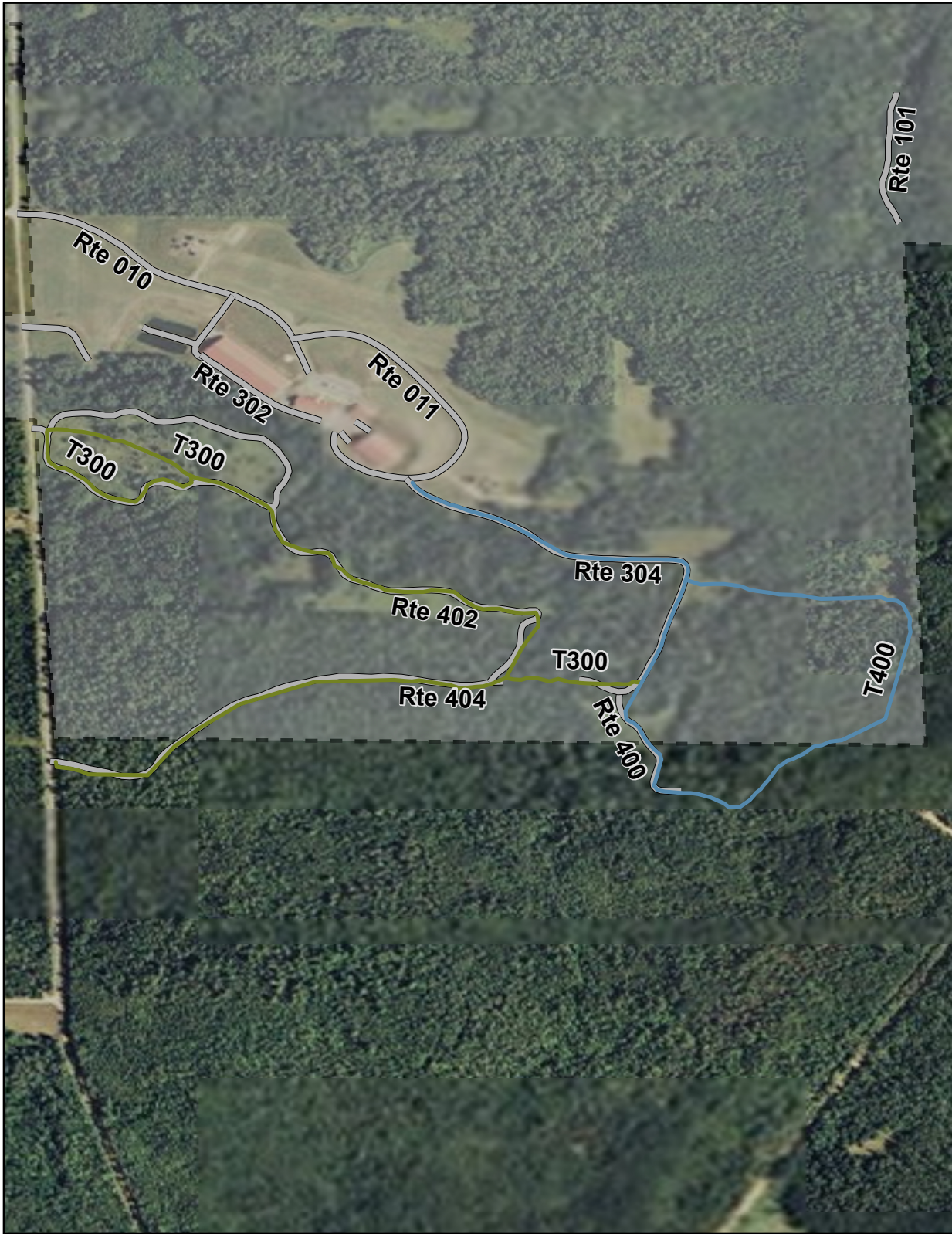
Trail Number	Feature Type	Quantity	Grouped Feature	Milepost	Photo
T300	Trailhead	1	No	0.00	IRRI_C2_0404
T300	Sign	3	No	0.00	IRRI_C2_0405
T300	Begin Section	1	No	0.14	
T300	Begin Section	1	No	0.60	
T300	Sign	1	No	1.06	IRRI_C2_0406
T400	Gate	1	No	0.00	IRRI_C2_0402
T400	Trailhead	1	No	0.00	IRRI_C2_0402
T400	Begin Section	1	No	0.37	IRRI_C2_0403

sf - square feet

lf - linear feet

cf - cubic feet

# Iron River NFH Trail Location Map



Station Boundary



HQ/VC

0 0.15 0.3 Miles

## Trails ID

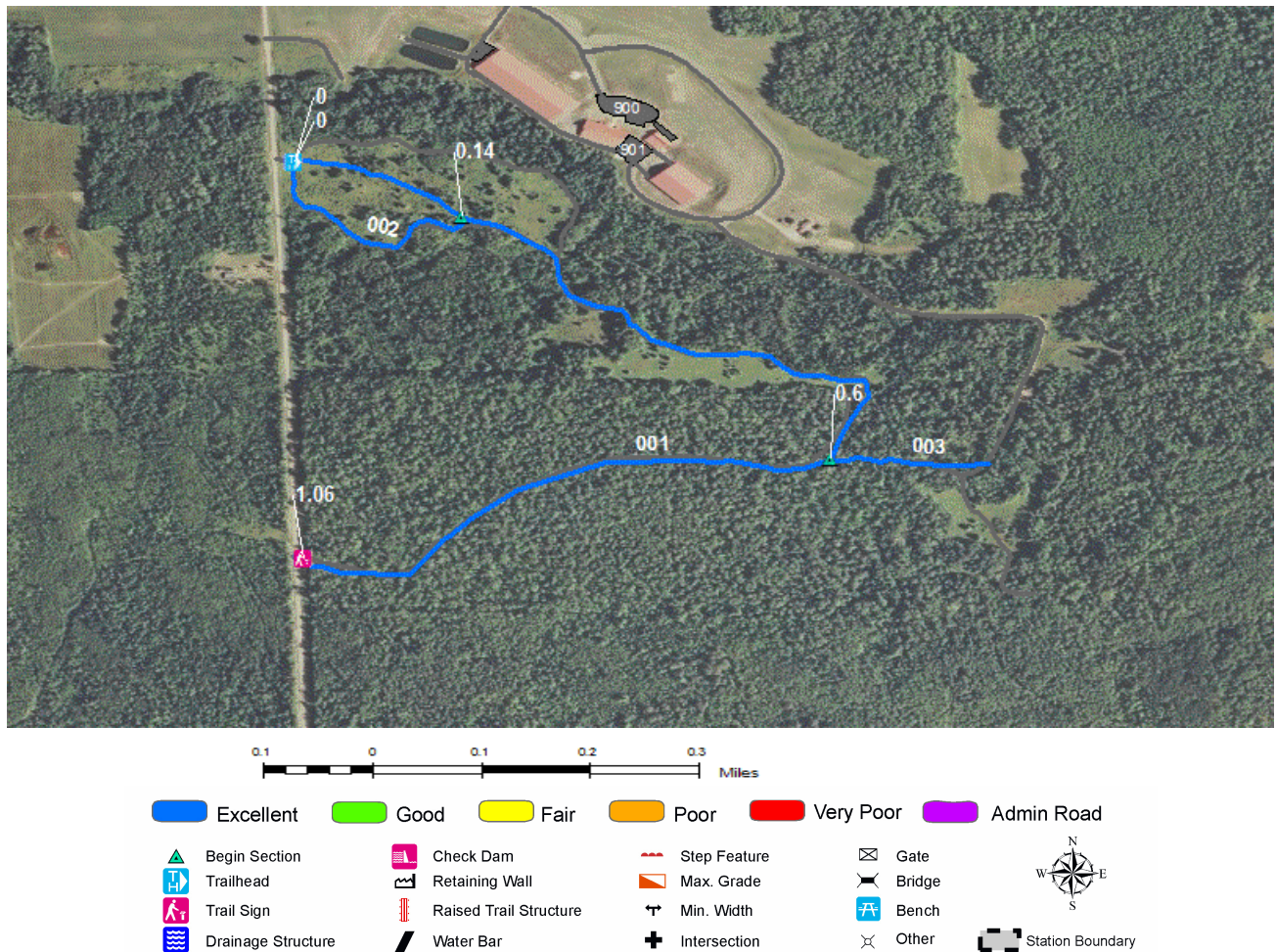
Station Name: Iron River NFH

Org Code: 32250

Trail Number	Trail Name	Surface Type	SAMMS	Trail Mileage	Trail Description (Begin and End point of trail)
T300	Blue Trail	Mowed	10061471	1.38	From Weidenaar Road to End of Loop
T400	Red Trail	Gravel	10061471	0.37	From Visitor Center Parking (Rte 900) to End of Loop
T400	Red Trail	Mowed	10061471	0.79	From Visitor Center Parking (Rte 900) to End of Loop



## TRAIL CONDITION



**Trail Name:** Blue Trail  
**Trail Number:** T300

**Refuge Name:** Iron River NFR  
**Region:** 3

**Total Length:** 1.38 Miles

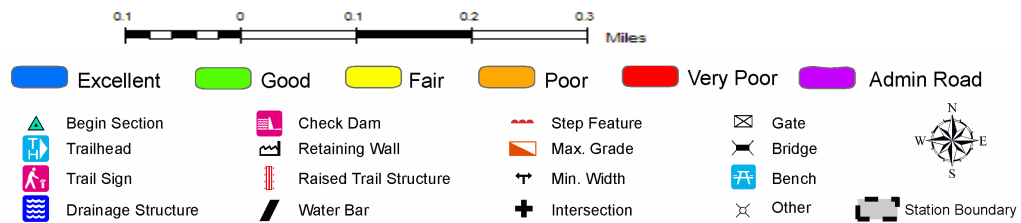
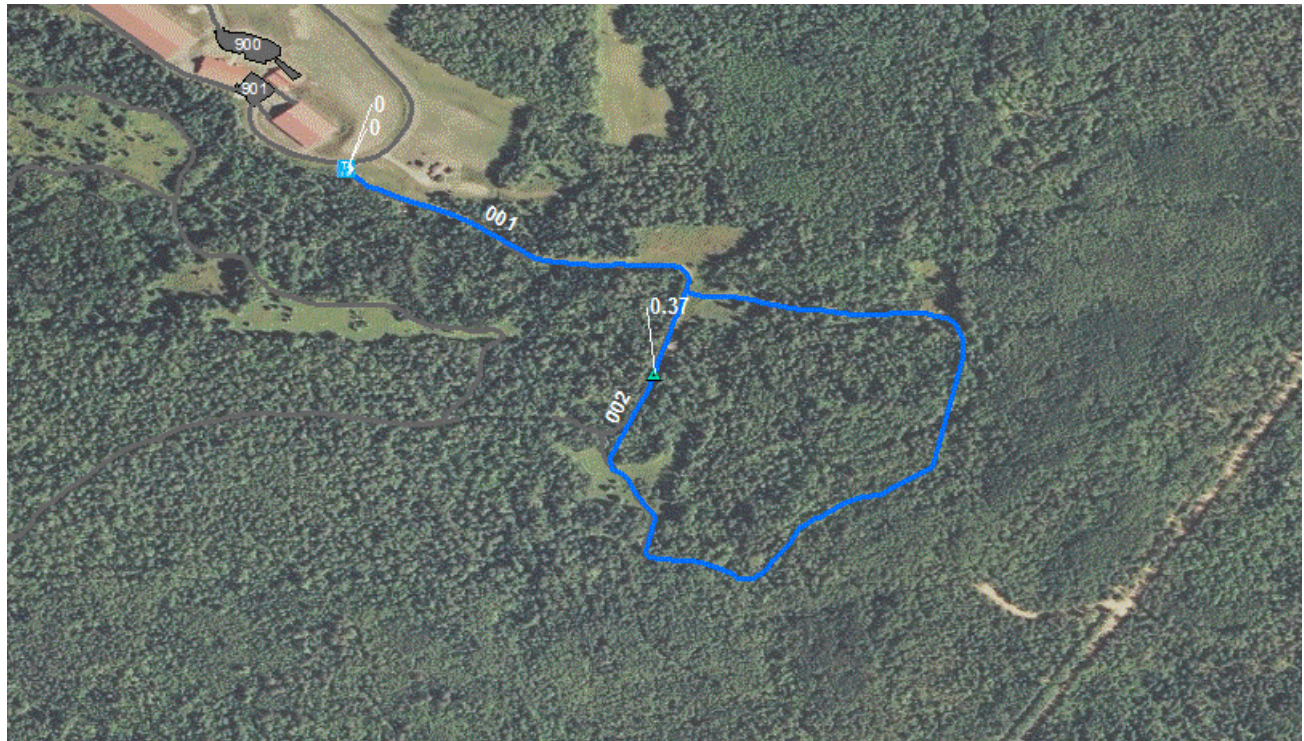
Section Number	001	002	003
Section Length (miles)	1.05	0.21	0.12
SAMMS Number	10061471	10061471	10061471
Rating Date	05/21/2011	05/21/2011	05/21/2011
<b>Trail Section Information</b>			
Trail Class	TC3	TC3	TC3
Surface Type	Mowed	Mowed	Mowed
Surface Firmness	Firm	Firm	Firm
Width (inches)	120	120	120
Average Grade (%)	3.8	3.8	3.8
Average X-slope (%)	2.40	2.40	2.40
<b>Trail Condition Information</b>			
Deferred Maintenance			
CRV	\$53,239	\$10,648	\$6,084
FCI	0.00	0.00	0.00
Condition	Excellent	Excellent	Excellent

### Trail Condition TOTALS

Deferred Maintenance	CRV	FCI	Condition
	\$69,971	0.00	Excellent



## TRAIL CONDITION



**Trail Name:** Red Trail  
**Trail Number:** T400

**Refuge Name:** Iron River NFH  
**Region:** 3

**Total Length:** 1.16 Miles

Section Number	001	002
Section Length (miles)	0.37	0.79
SAMMS Number	10061471	10061471
Rating Date	05/21/2011	05/21/2011
<b>Trail Section Information</b>		
Trail Class	TC4	TC3
Surface Type	Gravel	Mowed
Surface Firmness	Firm	Firm
Width (inches)	120	120
Average Grade (%)	3.2	3.2
Average X-slope (%)	2.10	2.10
<b>Trail Condition Information</b>		
Deferred Maintenance		
CRV	\$81,864	\$40,056
FCI	0.00	0.00
Condition	Excellent	Excellent

### Trail Condition TOTALS

Deferred Maintenance	CRV	FCI	Condition
	\$121,920	0.00	Excellent



## TRAIL DEFICIENCY

No Deficiencies

## PHOTOGRAPHIC SHEET

TRAIL NUMBER: T300  
STATION: Iron River NFH  
DATE: 05/21/2011



Photo # IRRI\_C2\_0404 - MP 0.00 - Trailhead

TRAIL NUMBER: T300  
STATION: Iron River NFH  
DATE: 05/21/2011



Photo # IRRI\_C2\_0405 - MP 0.00 - Sign



## PHOTOGRAPHIC SHEET

TRAIL NUMBER: T300  
STATION: Iron River NFH  
DATE: 05/21/2011



Photo # IRRI\_C2\_0406 - MP 1.06 - Sign

TRAIL NUMBER: T400  
STATION: Iron River NFH  
DATE: 05/21/2011



Photo # IRRI\_C2\_0402 - MP 0.00 - Trailhead



## PHOTOGRAPHIC SHEET

TRAIL NUMBER: T400  
STATION: Iron River NFH  
DATE: 05/21/2011



Photo # IRRI\_C2\_0402 - MP 0.00 - Gate

TRAIL NUMBER: T400  
STATION: Iron River NFH  
DATE: 05/21/2011



Photo # IRRI\_C2\_0403 - MP 0.37 - Begin Section



## Glossary of Terms and Abbreviations

<b>Acc Info</b>	Accessibility information available at trailhead.
<b>Action</b>	Action required to correct deficiency.
<b>Admin Road</b>	Administration Road. Admin Roads signed and advertised as trails are included in the trail inventory but a condition assessment is NOT done.
<b>Alt SAMMS</b>	SAMMS number of Alternate Facility Type.
<b>Alt Type</b>	Alternate Facility Type. Trail lies on a feature such as a levee, dam, administrative road or bridge, which has a separate SAMMS number.
<b>AvgGrade</b>	The average grade of the trail (%). The average of five measurements for trails less than two miles and ten measurements for trails equal to or greater than 2 miles.
<b>AvgSlope</b>	The average cross-slope of the trail (%). The average of five measurements for trails less than two miles and ten measurements for trails equal to or greater than 2 miles.
<b>Check Dam</b>	A small dam constructed across a drainage ditch, swale, or channel to lower the speed of concentrated flows.
<b>Condition</b>	Subjective rating of trail based on Facility Condition Index (FCI): FCI $\leq$ .01 = Excellent FCI .02 - .05 = Good FCI .06 - .10 = Fair FCI .11 - .20 = Poor FCI $>$ .20 = Failed
<b>Crib Wall</b>	Retaining wall.
<b>Current Replacement Value (CRV)</b>	The value of an asset determined by the estimated cost of replacing it.
<b>Def type</b>	Deficiency Type: Trail Structure, Drainage, Erosion, Obstacle, Trail Location, Other.
<b>Deferred Maintenance (DM)</b>	Maintenance that was not performed when scheduled.

<b>Elem ID</b>	Unique identifier for each trail section: Org Code-Trail Number-Section Number.
<b>Facility Condition Index (FCI)</b>	DM/CRV
<b>Grouped Features</b>	Grouped features include non-unique signs (mileposts, interpretive signs, species identification, etc.), water bars, check dams, steps, drain and drainage dips. For any given grouped feature, a GPS point and photo are taken for the first occurrence only and the total number of features in the group are entered into the “quantity” field of the data dictionary.
<b>Info Type</b>	Type of accessibility information available at trailhead: brochure, sign or other.
<b>Item</b>	Item on which the “Action” (see above) will be performed.
<b>Manage_Use</b>	Managed use of the trail: HIKE, BIKE, NSPC (non-specified), PACK, POR (portage), SNOWSHOE, XSKI (cross-country ski), OTHER.
<b>MP</b>	Distance of a trail feature or deficiency from the Trailhead.
<b>Puncheon</b>	Log footbridge used in area of poor drainage.
<b>Raised Trail Structure</b>	Boardwalk, Turnpike, Puncheon.
<b>T Class</b>	Trail Class: I-V (see Appendix ? for trail class descriptions).
<b>Tr Desig</b>	Trail Designation: Standard (Std), National Historic Trail (NHT), National Recreation Trail (NRT), National Scenic Trail (NST).
<b>Turnpike</b>	Trail tread elevated with dirt, rock or other aggregate from parallel side ditches and held in place by logs.