

# The Trail Inventory of Kodiak NWR

Kodiak, AK



Prepared By:  
Federal Highway Administration  
Central Federal Lands Highway Division  
May, 2012



# TABLE OF CONTENTS

<b><u>SECTION</u></b>	<b><u>PAGE</u></b>
<b>I.     <u>TRAIL AND TRAIL FEATURE SUMMARIES</u></b>	1 - 1
<b>II.    <u>TRAIL LOCATION MAPS</u></b>	2 - 1
<b>III.   <u>TRAIL IDENTIFICATION LIST</u></b>	3 - 1
<b>IV.    <u>TRAIL CONDITION RATING SHEETS</u></b>	4 - 1
<b>V.     <u>TRAIL DEFICIENCY RATING SHEETS</u></b>	5 - 1
<b>VI.    <u>PHOTOGRAPHIC SHEETS</u></b>	6 - 1
<b>VII.   <u>GLOSSARY</u></b>	i

## Kodiak NWR

### Trail and Trail Feature Summaries

#### Trail Miles and Percentages by Surface Type and Condition

Trail Surface Type	Good		Total
	Miles	%	Miles
Gravel	0.22	100%	0.22
Total	0.22	100%	0.22

#### Trail Miles and Percentages by Trail Classification and Condition

Trail Classification	Good		Total
	Miles	%	Miles
TC2	0.22	100%	0.22
Total	0.22	100%	0.22

\*Admin Roads are included in the inventory but are not rated for condition.

## Trail Features

Trail Number	Feature Type	Quantity	Grouped Feature	Milepost	Photo
T200	Trailhead	1	No	0.00	KODI_C2_1925
T200	Sign	1	No	0.00	KODI_C2_1925
T200	Boardwalk -lf	10	No	0.00	KODI_C2_1925
T200	Sign	1	No	0.01	KODI_C2_1927
T200	Sign	9	Yes	0.01	KODI_C2_1928
T200	Sign	1	No	0.02	KODI_C2_1929
T200	Step: Log -each	7	No	0.03	
T200	Step: Log -each	13	No	0.04	
T200	Step: Log -each	1	No	0.07	
T200	Boardwalk -lf	10	No	0.08	KODI_C2_1933
T200	Step: Log -each	7	No	0.09	
T200	Crib: Log -cf	10	No	0.09	
T200	Step: Log -each	35	No	0.12	
T200	Lookout/Ob Deck	1	No	0.15	
T200	Sign	1	No	0.15	KODI_C2_1934
T200	Sign	1	No	0.17	KODI_C2_1938
T200	Step: Log -each	6	No	0.21	

sf - square feet

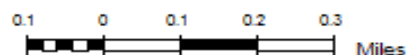
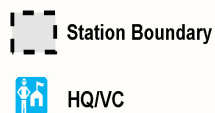
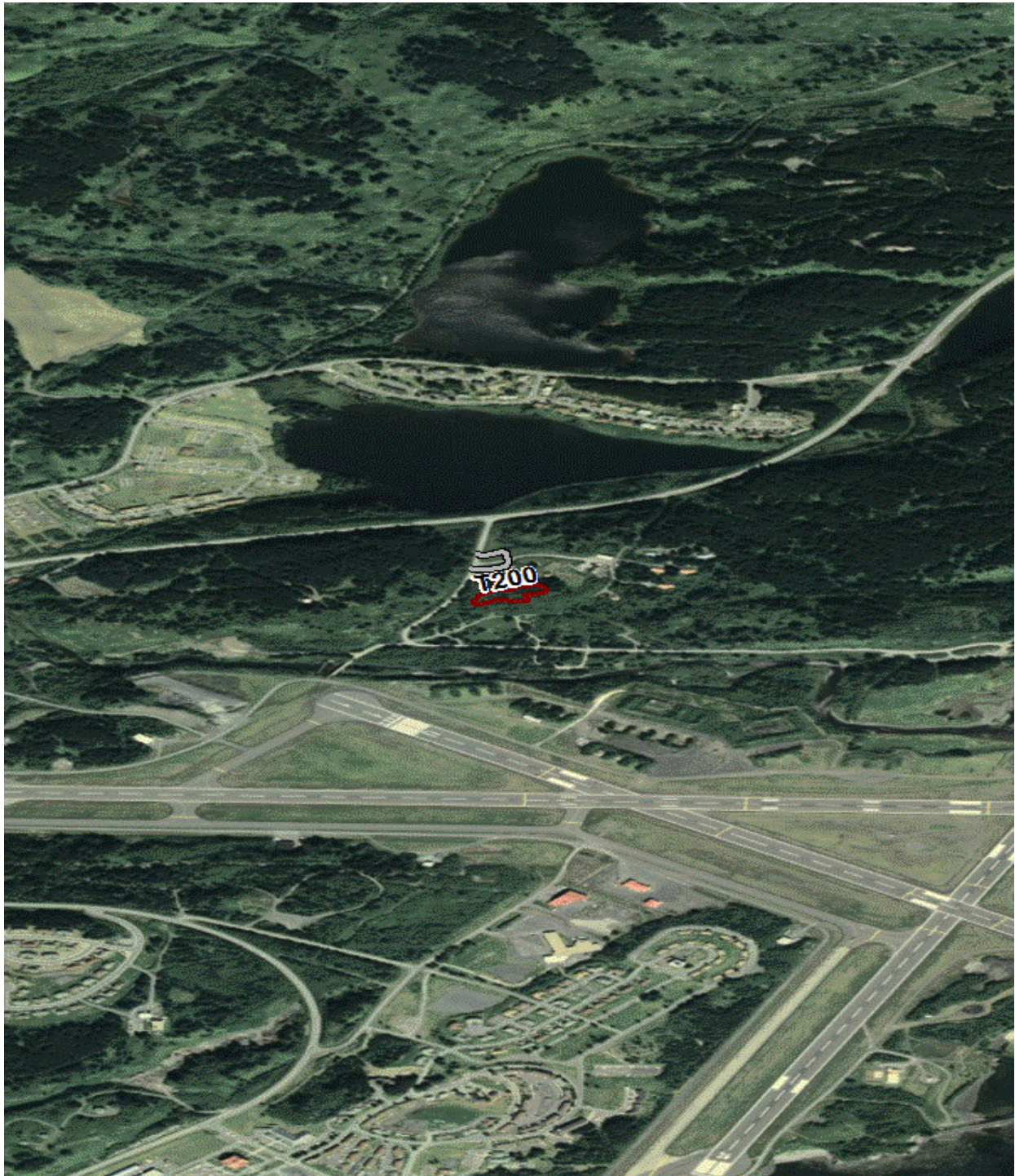
lf - linear feet

cf - cubic feet



# Kodiak NWR

## Trail Location Map



## Trails ID

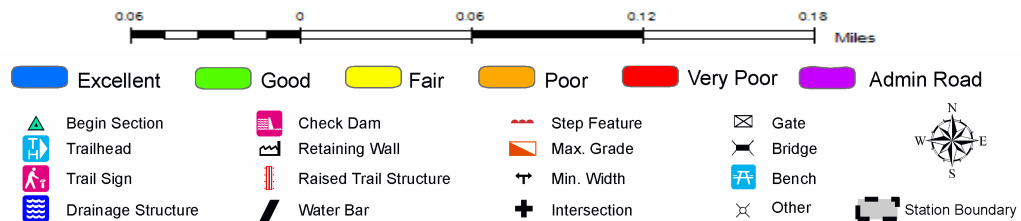
Station Name: Kodiak NWR

Org Code: 74530

Trail Number	Trail Name	Surface Type	SAMMS	Trail Mileage	Trail Description (Begin and End point of trail)
T200	Audubon Buskin View Nature Trail	Gravel	10035307	0.22	From HQ/VC Parking (Rte 010) to End of Trail Loop



## TRAIL CONDITION



**Trail Name:** Audubon Buskin View Nature Trail **Refuge Name:** Kodiak NWR

**Trail Number:** T200

**Region:** 7

**Total Length:** 0.22 Miles

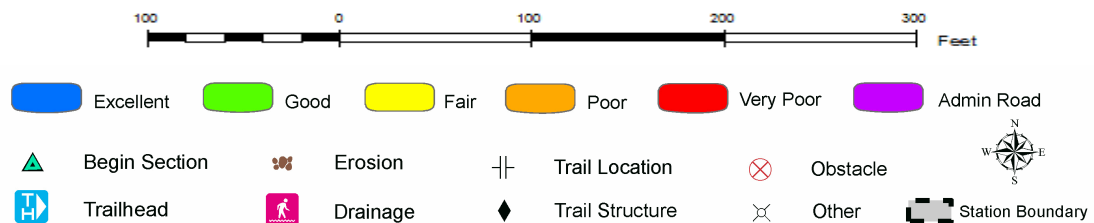
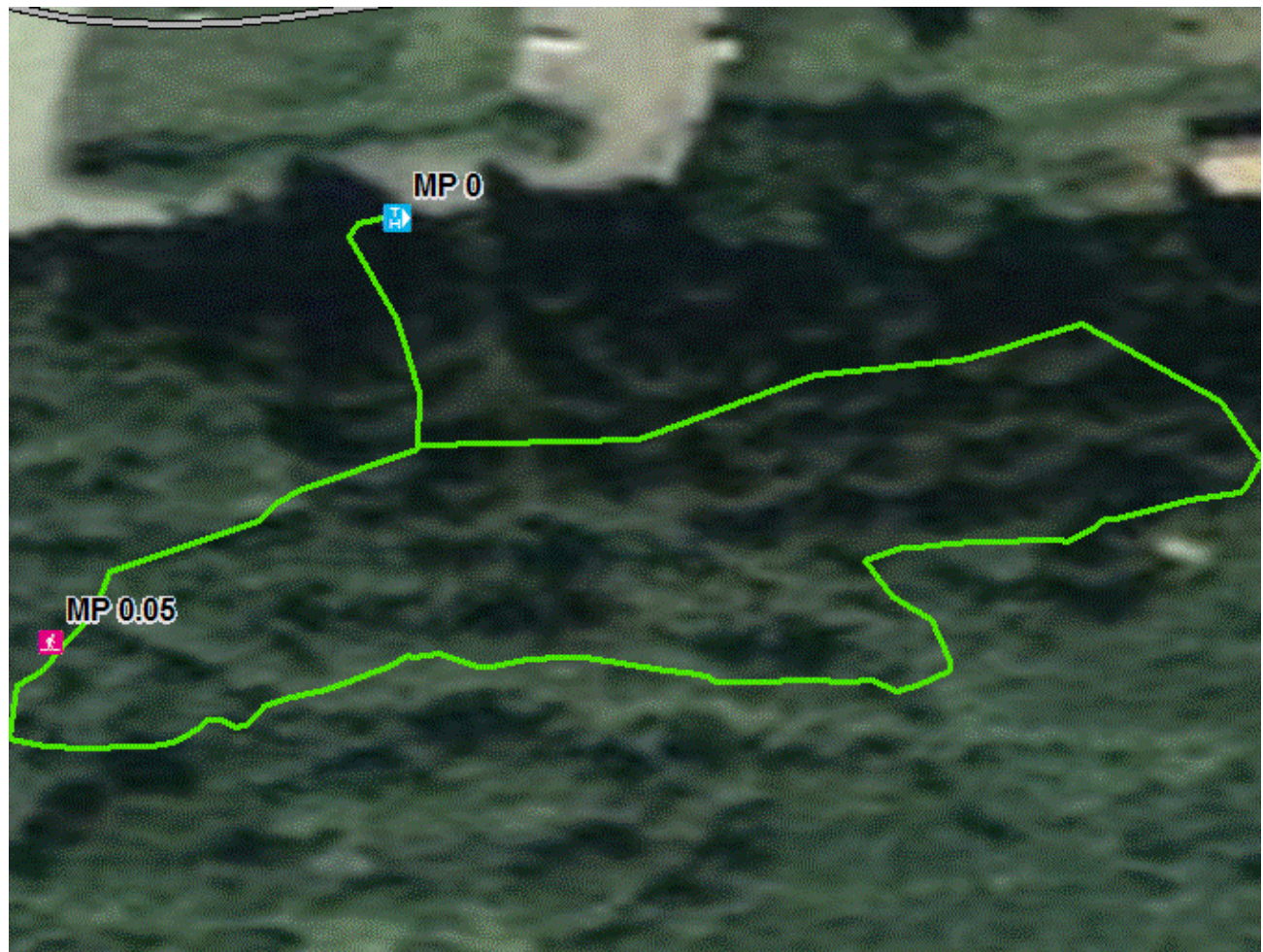
Section Number	001
Section Length (miles)	0.22
SAMMS Number	10035307
Rating Date	06/14/2007
<b>Trail Section Information</b>	
Trail Class	TC2
Surface Type	Gravel
Surface Firmness	Soft
Width (inches)	12
Average Grade (%)	8.8
Average X-slope (%)	2.00
<b>Trail Condition Information</b>	
Deferred Maintenance	\$721
CRV	\$8,935
FCI	0.02
Condition	Good

### Trail Condition TOTALS

Deferred Maintenance	CRV	FCI	Condition
\$721	\$8,935	0.02	Good



## TRAIL DEFICIENCY



**Trail Name:** Audubon Buskin View Nature Trail Refuge Name: Kodiak NWR

**Trail Number:** T200

Region: 7

Total Length: 0.22 Miles

Mile Post	0.05
Section Number	001
Photo Number	KODI_C2_1931
Deficiency	Drainage
Action	Build/Add
Item	Puncheon -lf
Quantity	40
Deferred Maintenance	\$721





## PHOTOGRAPHIC SHEET

TRAIL NUMBER: T200

STATION: Kodiak NWR

DATE: 06/14/2007



Photo # KODI\_C2\_1925 - MP 0.00 - Trailhead

TRAIL NUMBER: T200

STATION: Kodiak NWR

DATE: 06/14/2007



Photo # KODI\_C2\_1925 - MP 0.00 - Sign



## PHOTOGRAPHIC SHEET

TRAIL NUMBER: T200  
STATION: Kodiak NWR  
DATE: 06/14/2007



Photo # KODI\_C2\_1925 - MP 0.00 - Boardwalk -lf

TRAIL NUMBER: T200  
STATION: Kodiak NWR  
DATE: 06/14/2007



Photo # KODI\_C2\_1927 - MP 0.01 - Sign



## PHOTOGRAPHIC SHEET

TRAIL NUMBER: T200  
STATION: Kodiak NWR  
DATE: 06/14/2007



Photo # KODI\_C2\_1928 - MP 0.01 - Sign

TRAIL NUMBER: T200  
STATION: Kodiak NWR  
DATE: 06/14/2007



Photo # KODI\_C2\_1929 - MP 0.02 - Sign



## PHOTOGRAPHIC SHEET

TRAIL NUMBER: T200  
STATION: Kodiak NWR  
DATE: 06/14/2007



Photo # KODI\_C2\_1933 - MP 0.08 - Boardwalk -lf

TRAIL NUMBER: T200  
STATION: Kodiak NWR  
DATE: 06/14/2007

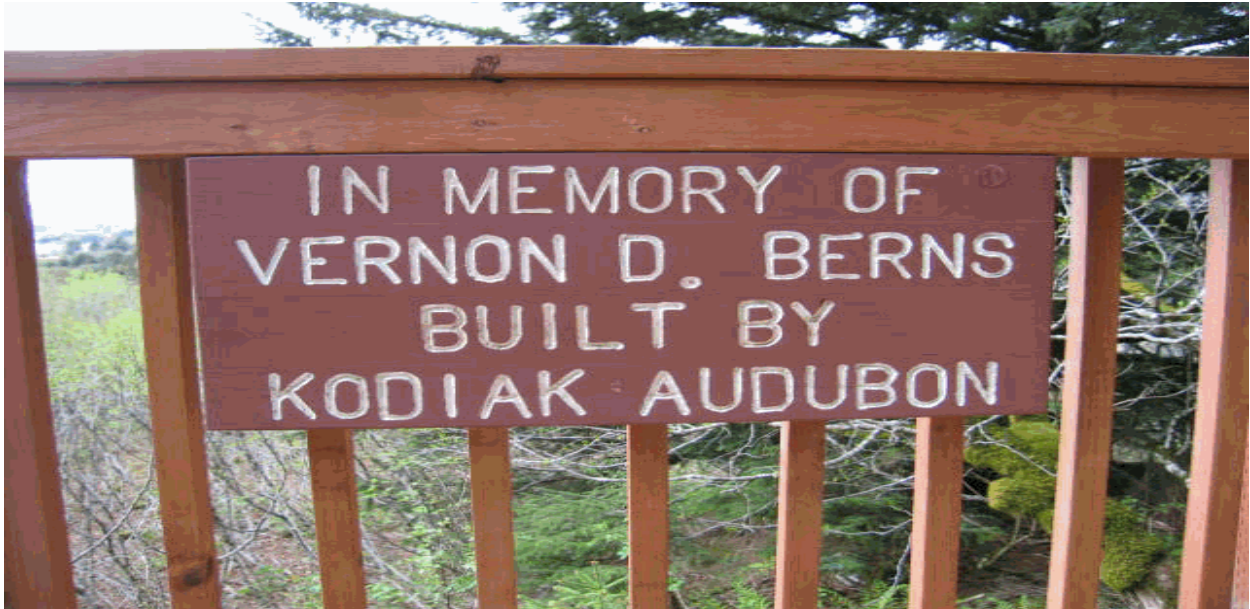


Photo # KODI\_C2\_1934 - MP 0.15 - Sign

## PHOTOGRAPHIC SHEET

TRAIL NUMBER: T200

STATION: Kodiak NWR

DATE: 06/14/2007



Photo # KODI\_C2\_1938 - MP 0.17 - Sign



## Glossary of Terms and Abbreviations

<b>Acc Info</b>	Accessibility information available at trailhead.
<b>Action</b>	Action required to correct deficiency.
<b>Admin Road</b>	Administration Road. Admin Roads signed and advertised as trails are included in the trail inventory but a condition assessment is NOT done.
<b>Alt SAMMS</b>	SAMMS number of Alternate Facility Type.
<b>Alt Type</b>	Alternate Facility Type. Trail lies on a feature such as a levee, dam, administrative road or bridge, which has a separate SAMMS number.
<b>AvgGrade</b>	The average grade of the trail (%). The average of five measurements for trails less than two miles and ten measurements for trails equal to or greater than 2 miles.
<b>AvgSlope</b>	The average cross-slope of the trail (%). The average of five measurements for trails less than two miles and ten measurements for trails equal to or greater than 2 miles.
<b>Check Dam</b>	A small dam constructed across a drainage ditch, swale, or channel to lower the speed of concentrated flows.
<b>Condition</b>	Subjective rating of trail based on Facility Condition Index (FCI): FCI $\leq$ .01 = Excellent FCI .02 - .05 = Good FCI .06 - .10 = Fair FCI .11 - .20 = Poor FCI $>$ .20 = Failed
<b>Crib Wall</b>	Retaining wall.
<b>Current Replacement Value (CRV)</b>	The value of an asset determined by the estimated cost of replacing it.
<b>Def type</b>	Deficiency Type: Trail Structure, Drainage, Erosion, Obstacle, Trail Location, Other.
<b>Deferred Maintenance (DM)</b>	Maintenance that was not performed when scheduled.

<b>Elem ID</b>	Unique identifier for each trail section: Org Code-Trail Number-Section Number.
<b>Facility Condition Index (FCI)</b>	DM/CRV
<b>Grouped Features</b>	Grouped features include non-unique signs (mileposts, interpretive signs, species identification, etc.), water bars, check dams, steps, drain and drainage dips. For any given grouped feature, a GPS point and photo are taken for the first occurrence only and the total number of features in the group are entered into the “quantity” field of the data dictionary.
<b>Info Type</b>	Type of accessibility information available at trailhead: brochure, sign or other.
<b>Item</b>	Item on which the “Action” (see above) will be performed.
<b>Manage_Use</b>	Managed use of the trail: HIKE, BIKE, NSPC (non-specified), PACK, POR (portage), SNOWSHOE, XSKI (cross-country ski), OTHER.
<b>MP</b>	Distance of a trail feature or deficiency from the Trailhead.
<b>Puncheon</b>	Log footbridge used in area of poor drainage.
<b>Raised Trail Structure</b>	Boardwalk, Turnpike, Puncheon.
<b>T Class</b>	Trail Class: I-V (see Appendix ? for trail class descriptions).
<b>Tr Desig</b>	Trail Designation: Standard (Std), National Historic Trail (NHT), National Recreation Trail (NRT), National Scenic Trail (NST).
<b>Turnpike</b>	Trail tread elevated with dirt, rock or other aggregate from parallel side ditches and held in place by logs.