

The Trail Inventory of Lower Hatchie National Wildlife Refuge Dyersburg, Tennessee



**Prepared By:
Federal Highway Administration
Central Federal Lands Highway Division
July 2006**



Lower Hatchie NWR

Trail and Trail Feature Summaries

Trail Miles and Percentages by Surface Type and Condition

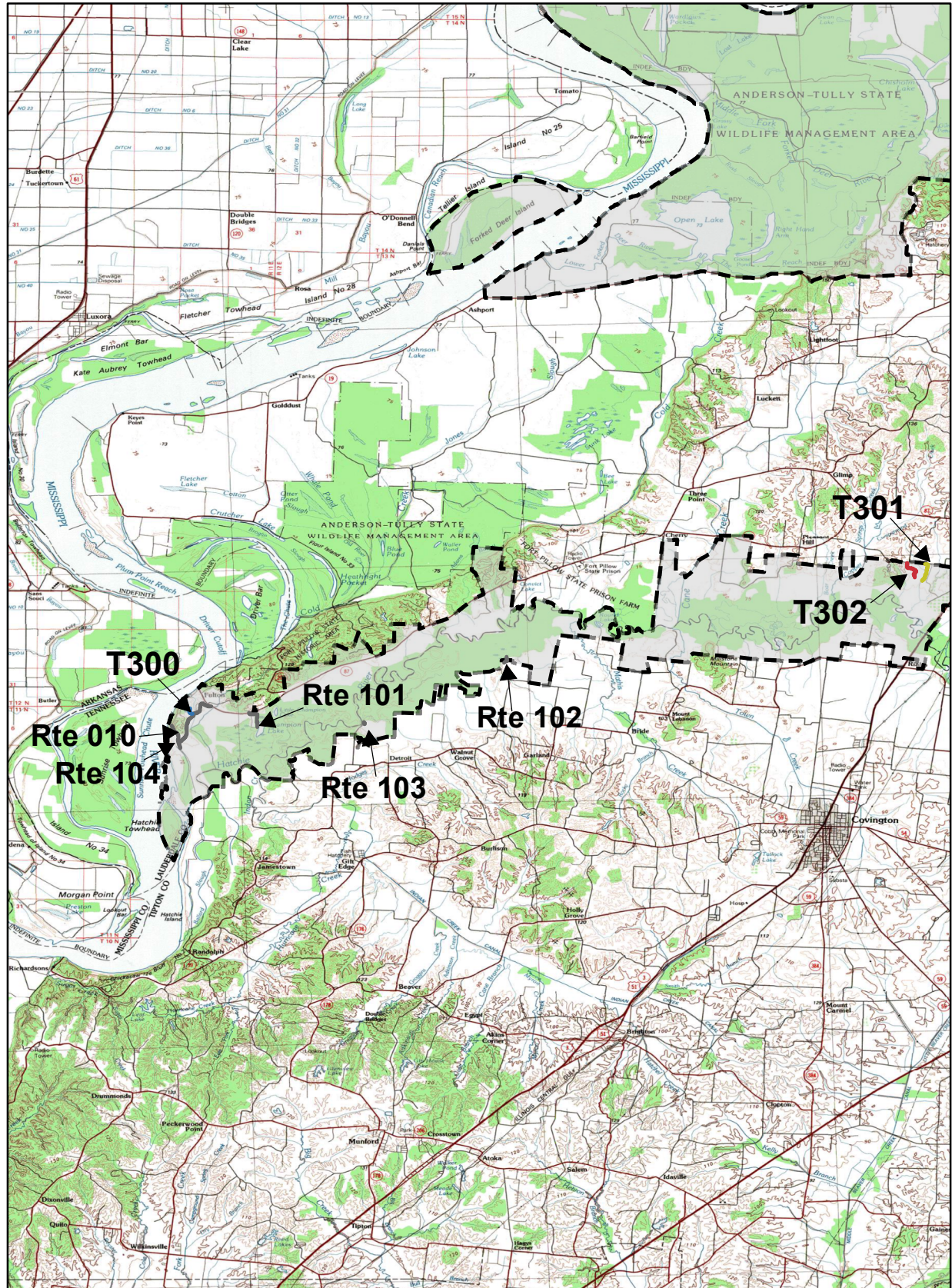
Trail Surface Type	Mileage by Trail Condition												Total Miles
	Excellent		Good		Fair		Poor		Very Poor		Not Rated*		
	MILES	%	MILES	%	MILES	%	MILES	%	MILES	%	MILES	%	
Native		0%		0%		0%		0%		0%		0%	0.00
Gravel		0%		0%		0%		0%		0%		0%	0.00
Asphalt		0%		0%		0%		0%		0%		0%	0.00
Concrete		0%		0%		0%		0%		0%		0%	0.00
Turnpike		0%		0%		0%		0%		0%		0%	0.00
Boardwalk		0%		0%		0%		0%		0%		0%	0.00
Puncheon		0%		0%		0%		0%		0%		0%	0.00
Woodchips		0%		0%		0%		0%		0%		0%	0.00
Mowed	0.19	15%		0%		0%		0%		0%		0%	0.19
Admin Road		0%		0%		0%		0%		0%	1.05	85%	1.05
Other		0%		0%		0%		0%		0%		0%	0.00
Totals	0.19	15%	0.00	0%	0.00	0%	0.00	0%	0.00	0%	1.05	85%	1.24

Trail Miles and Percentages by Trail Classification and Condition

Trail Classification	Mileage by Trail Condition												Total Miles
	Excellent		Good		Fair		Poor		Very Poor		Not Rated*		
	MILES	%	MILES	%	MILES	%	MILES	%	MILES	%	MILES	%	
TC1		0%		0%		0%		0%		0%		0%	0.00
TC2		0%		0%		0%		0%		0%		0%	0.00
TC3	0.19	15%		0%		0%		0%		0%	1.05	85%	1.24
TC4		0%		0%		0%		0%		0%		0%	0.00
TC5		0%		0%		0%		0%		0%		0%	0.00
Totals	0.19	15%	0.00	0%	0.00	0%	0.00	0%	0.00	0%	1.05	85%	1.24

* Admin Roads are included in the inventory but are not rated for condition.

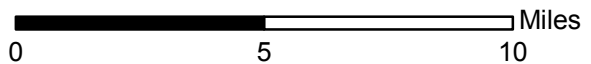
LOWER HATCHIE NATIONAL WILDLIFE REFUGE TRAIL LOCATION MAP



Station Boundary



HQ/VC



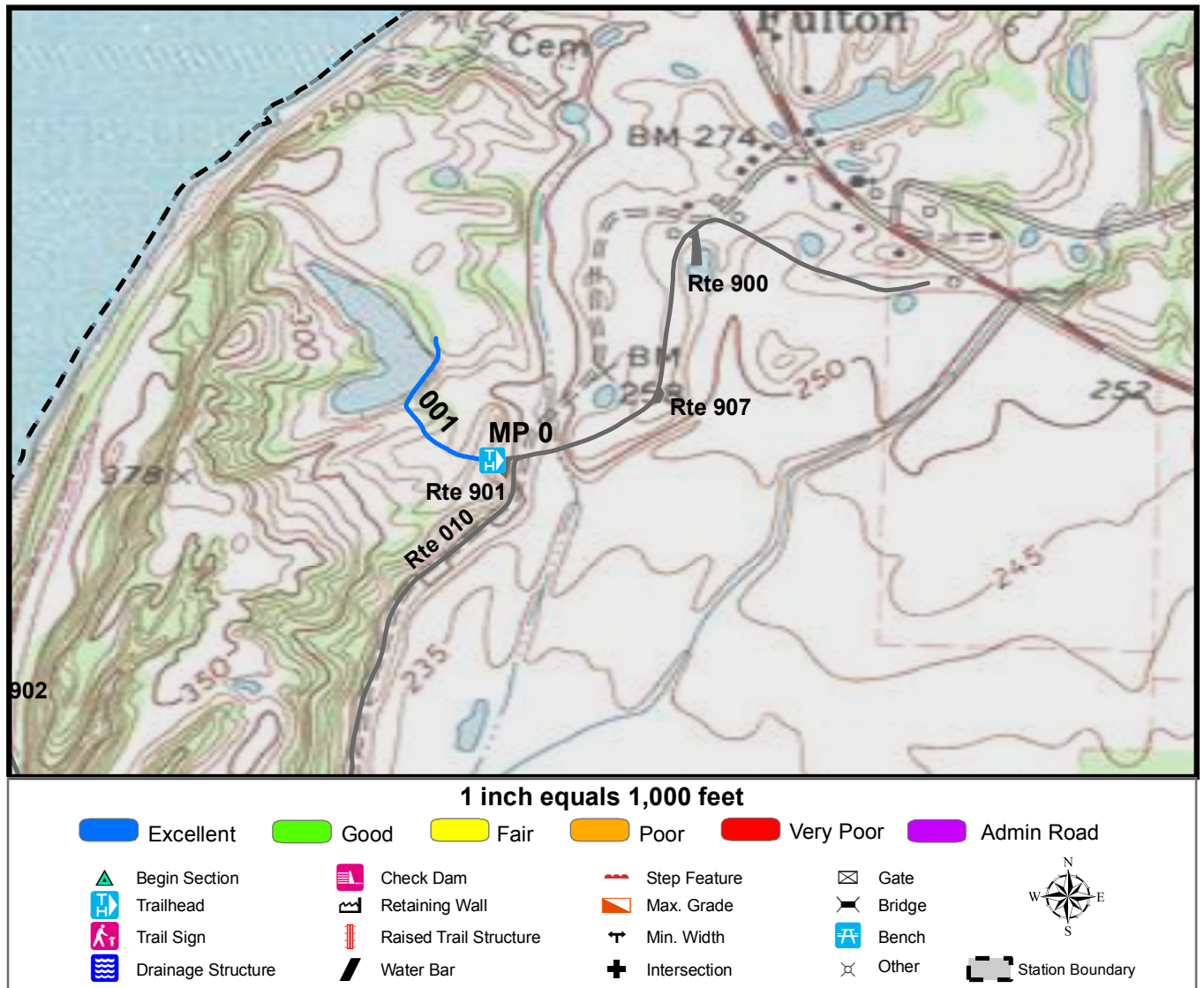
TRAILS ID

Station Name: Lower Hatchie NWR

Org. Code: 42527

Trail #	Trail Name	Surface Type	SAMMS	Trail Mileage	Trail Description (Begin and End point of trail)
T300	Shoaf Trail	Mowed	10039827	0.19	From West of Shoaf-Teal Pond Parking (Rte 901) to end of trail
T301	West Crutcher Trail	Admin Road	10042038	0.53	From East of West Crutcher Parking (Rte 912) to end of trail
T302	Middle Crutcher Trail	Admin Road	N/A	0.52	From South of Middle Crutcher Parking (Rte 913) to end of trail

TRAIL CONDITION



Trail Name: Shoaf Trail

Refuge Name: Lower Hatchie NWR

Trail Number: T300

Region: 4

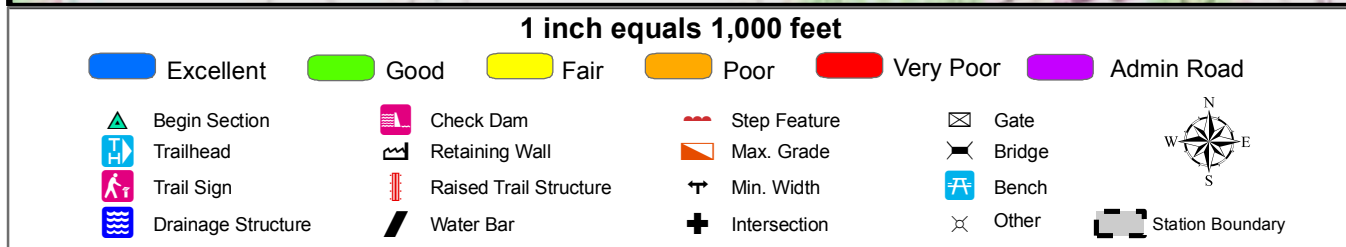
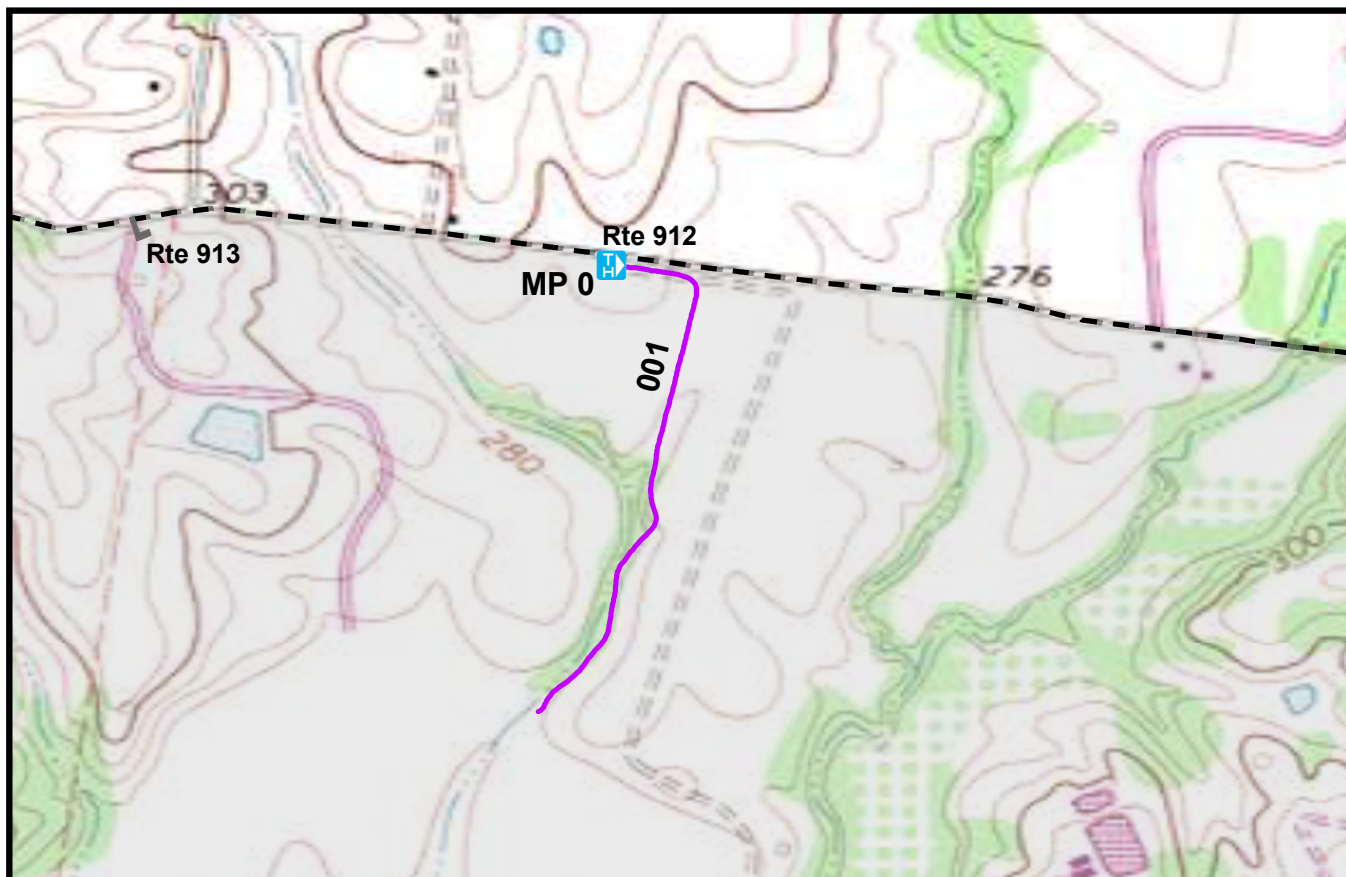
TOTAL LENGTH: 0.19 Miles

Section Number	001				
Section Length (miles)	0.19				
SAMMS Number	10039827				
Rating Date	7/7/2006				
Trail Section Information					
Trail Class	TC3				
Surface Type	Mowed				
Surface Firmness	Firm				
Width (inches)	120				
Average Grade (%)	1.2				
Average X-slope (%)	2.1				
Trail Condition Information					
Deferred Maintenance	\$0				
CRV	\$8608				
FCI	0				
Condition	Excellent				

Trail Condition TOTALS

Deferred Maintenance	CRV	FCI	Condition
\$0	\$8608	0	Excellent

TRAIL CONDITION



Trail Name: West Crutcher Trail

Refuge Name: Lower Hatchie NWR

Trail Number: T301

Region: 4

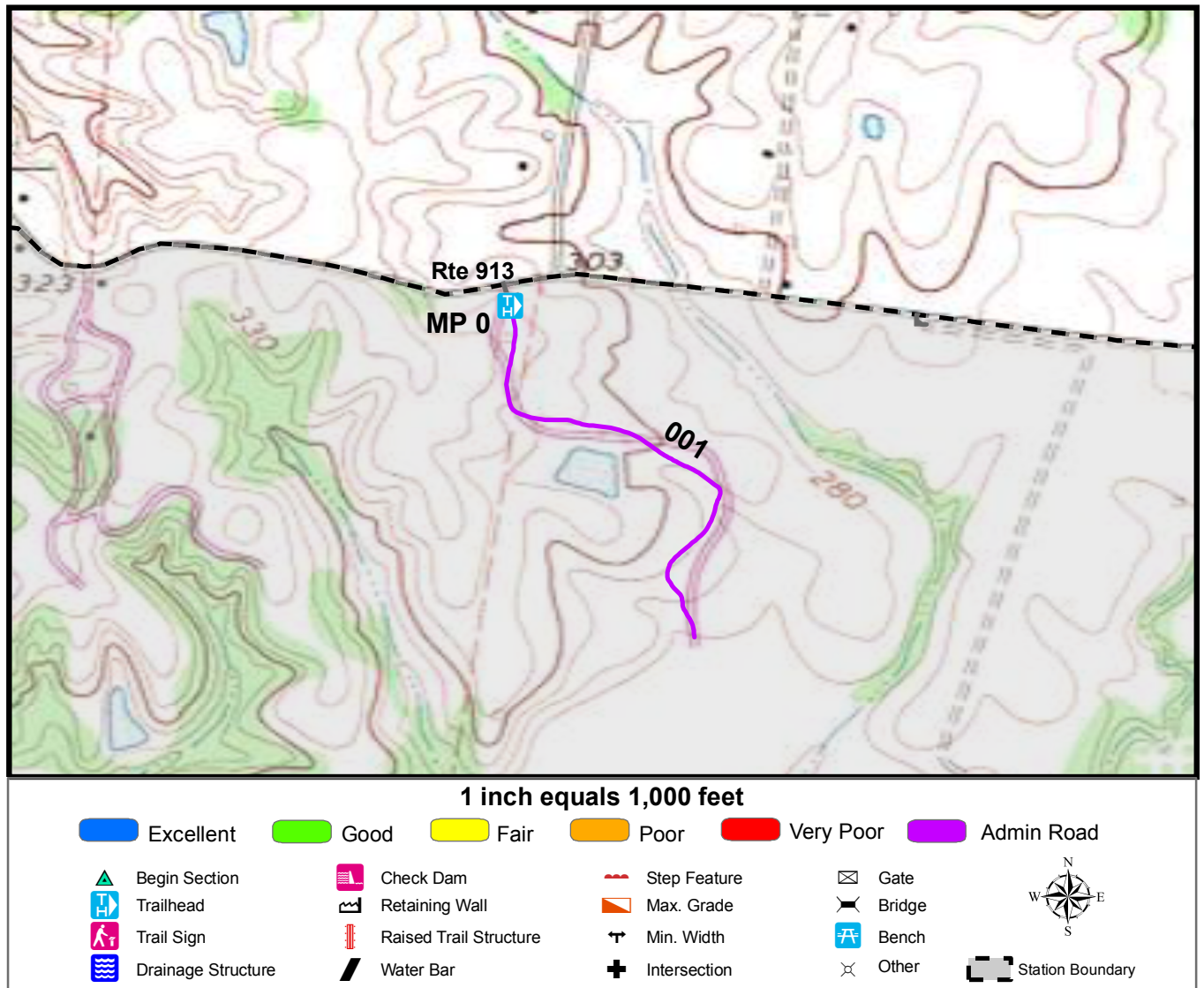
TOTAL LENGTH: 0.53 Miles

Section Number	001				
Section Length (miles)	0.53				
SAMMS Number	10042038				
Rating Date	7/10/2006				
Trail Section Information					
Trail Class	TC3				
Surface Type	Admin Road				
Surface Firmness	Hard				
Width (inches)	72				
Average Grade (%)	2.1				
Average X-slope (%)	1.7				
Trail Condition Information					
Deferred Maintenance	\$0				
CRV	\$0				
FCI	0				
Condition	Not Rated				

Trail Condition TOTALS

Deferred Maintenance	CRV	FCI	Condition
\$0	\$0	0	Not Rated

TRAIL CONDITION



Trail Name: Middle Crutcher Trail

Refuge Name: Lower Hatchie NWR

Trail Number: T302

Region: 4

TOTAL LENGTH: 0.52 Miles

Section Number	001				
Section Length (miles)	0.52				
SAMMS Number	N/A				
Rating Date	7/10/2006				
Trail Section Information					
Trail Class	TC3				
Surface Type	Admin Road				
Surface Firmness	Firm				
Width (inches)	72				
Average Grade (%)	1.6				
Average X-slope (%)	1.2				
Trail Condition Information					
Deferred Maintenance	\$0				
CRV	\$0				
FCI	0				
Condition	Not Rated				

Trail Condition TOTALS

Deferred Maintenance	CRV	FCI	Condition
\$0	\$0	0	Not Rated

PHOTOGRAPHIC SHEET

TRAIL NUMBER: **T300**

STATION: Lower Hatchie NWR

DATE: 7/7/2006



Photo # 1 - MP 0.0 - Trailhead

TRAIL NUMBER: **T301**

STATION: Lower Hatchie NWR

DATE: 7/10/2006



Photo # 8 - MP 0.0 - Trailhead

PHOTOGRAPHIC SHEET

TRAIL NUMBER: T302

STATION: Lower Hatchie NWR

DATE: 7/10/2006



Photo # 6 - MP 0.0 - Trailhead