

The Trail Inventory of Mandalay NWR

Houma, LA



Prepared By:
Federal Highway Administration
Central Federal Lands Highway Division
March, 2012



TABLE OF CONTENTS

| <u>SECTION</u> | <u>PAGE</u> |
|--|--------------------|
| I. <u>TRAIL AND TRAIL FEATURE SUMMARIES</u> | 1 - 1 |
| II. <u>TRAIL LOCATION MAPS</u> | 2 - 1 |
| III. <u>TRAIL IDENTIFICATION LIST</u> | 3 - 1 |
| IV. <u>TRAIL CONDITION RATING SHEETS</u> | 4 - 1 |
| V. <u>TRAIL DEFICIENCY RATING SHEETS</u> | 5 - 1 |
| VI. <u>PHOTOGRAPHIC SHEETS</u> | 6 - 1 |
| VII. <u>GLOSSARY</u> | i |

Mandalay NWR

Trail and Trail Feature Summaries

Trail Miles and Percentages by Surface Type and Condition

| Trail Surface Type | Excellent | | Total |
|--------------------|-----------|------|-------|
| | Miles | % | Miles |
| Native | 0.17 | 100% | 0.17 |
| Gravel | 0.26 | 100% | 0.26 |
| Total | 0.43 | 100% | 0.43 |

Trail Miles and Percentages by Trail Classification and Condition

| Trail Classification | Excellent | | Total |
|----------------------|-----------|------|-------|
| | Miles | % | Miles |
| TC3 | 0.43 | 100% | 0.43 |
| Total | 0.43 | 100% | 0.43 |

*Admin Roads are included in the inventory but are not rated for condition.

Trail Features

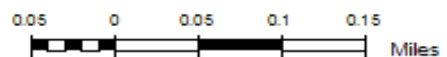
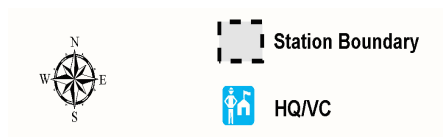
| Trail Number | Feature Type | Quantity | Grouped Feature | Milepost | Photo |
|--------------|-----------------|----------|-----------------|----------|--------------|
| T300 | Trailhead | 1 | No | 0.00 | MAND_C2_0005 |
| T300 | Bridge -sf | 320 | No | 0.16 | MAND_C2_0006 |
| T300 | Begin Section | 1 | No | 0.17 | MAND_C2_0007 |
| T300 | Boardwalk -lf | 44 | No | 0.24 | MAND_C2_0008 |
| T300 | Boardwalk -lf | 36 | No | 0.36 | MAND_C2_0009 |
| T300 | Lookout/Ob Deck | 1 | No | 0.43 | |

sf - square feet

lf - linear feet

cf - cubic feet

Mandalay NWR Trail Location Map



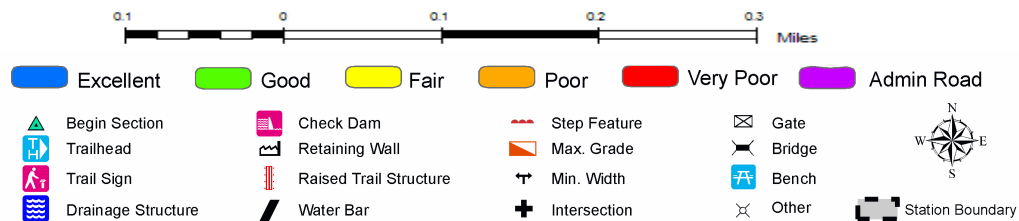
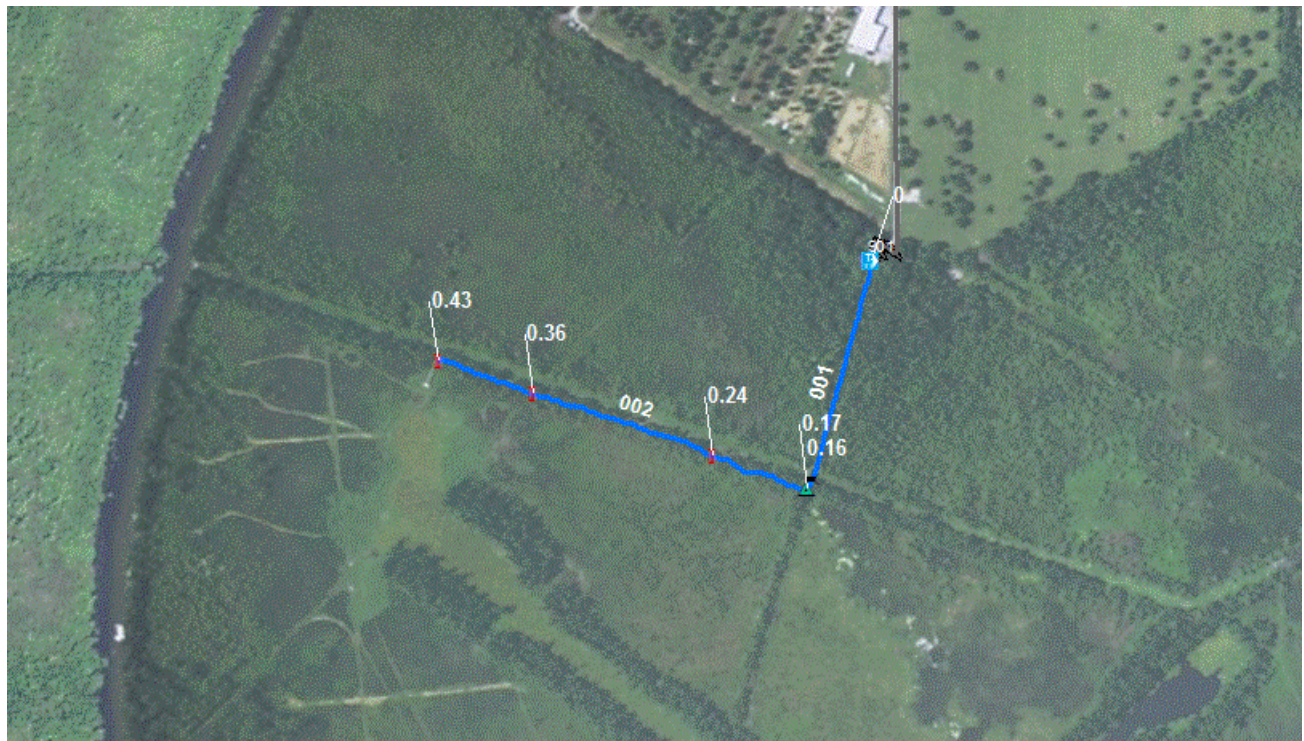
Trails ID

Station Name: Mandalay NWR

Org Code: 43626

| Trail Number | Trail Name | Surface Type | SAMMS | Trail Mileage | Trail Description (Begin and End point of trail) |
|--------------|--------------|--------------|-------|---------------|---|
| T300 | Nature Trail | Gravel | N/A | 0.26 | From Nature Trail Parking (Rte 901) to Observation Deck |
| T300 | Nature Trail | Native | N/A | 0.17 | From Nature Trail Parking (Rte 901) to Observation Deck |

TRAIL CONDITION



Trail Name: Nature Trail
Trail Number: T300

Refuge Name: Mandalay NWR
Region: 4

Total Length: 0.43 Miles

| | | |
|------------------------------------|------------|------------|
| Section Number | 001 | 002 |
| Section Length (miles) | 0.17 | 0.26 |
| SAMMS Number | N/A | N/A |
| Rating Date | 03/25/2006 | 03/25/2006 |
| Trail Section Information | | |
| Trail Class | TC3 | TC3 |
| Surface Type | Native | Gravel |
| Surface Firmness | Firm | Soft |
| Width (inches) | 112 | 60 |
| Average Grade (%) | 1.4 | 1.4 |
| Average X-slope (%) | 3.90 | 3.90 |
| Trail Condition Information | | |
| Deferred Maintenance | | |
| CRV | \$31,186 | \$27,873 |
| FCI | 0.00 | 0.00 |
| Condition | Excellent | Excellent |

Trail Condition TOTALS

| | | | |
|----------------------|----------|------|-----------|
| Deferred Maintenance | CRV | FCI | Condition |
| | \$59,060 | 0.00 | Excellent |

TRAIL DEFICIENCY

No Deficiencies

PHOTOGRAPHIC SHEET

TRAIL NUMBER: T300
STATION: Mandalay NWR
DATE: 03/25/2006



Photo # MAND_C2_0005 - MP 0.00 - Trailhead

TRAIL NUMBER: T300
STATION: Mandalay NWR
DATE: 03/25/2006



Photo # MAND_C2_0006 - MP 0.16 - Bridge -sf

PHOTOGRAPHIC SHEET

TRAIL NUMBER: T300
STATION: Mandalay NWR
DATE: 03/25/2006



Photo # MAND_C2_0007 - MP 0.17 - Begin Section

TRAIL NUMBER: T300
STATION: Mandalay NWR
DATE: 03/25/2006



Photo # MAND_C2_0008 - MP 0.24 - Boardwalk -lf

PHOTOGRAPHIC SHEET

TRAIL NUMBER: T300

STATION: Mandalay NWR

DATE: 03/25/2006



Photo # MAND_C2_0009 - MP 0.36 - Boardwalk -lf

Glossary of Terms and Abbreviations

| | |
|--|---|
| Acc Info | Accessibility information available at trailhead. |
| Action | Action required to correct deficiency. |
| Admin Road | Administration Road. Admin Roads signed and advertised as trails are included in the trail inventory but a condition assessment is NOT done. |
| Alt SAMMS | SAMMS number of Alternate Facility Type. |
| Alt Type | Alternate Facility Type. Trail lies on a feature such as a levee, dam, administrative road or bridge, which has a separate SAMMS number. |
| AvgGrade | The average grade of the trail (%). The average of five measurements for trails less than two miles and ten measurements for trails equal to or greater than 2 miles. |
| AvgSlope | The average cross-slope of the trail (%). The average of five measurements for trails less than two miles and ten measurements for trails equal to or greater than 2 miles. |
| Check Dam | A small dam constructed across a drainage ditch, swale, or channel to lower the speed of concentrated flows. |
| Condition | Subjective rating of trail based on Facility Condition Index (FCI): FCI \leq .01 = Excellent FCI .02 - .05 = Good FCI .06 - .10 = Fair FCI .11 - .20 = Poor FCI $>$.20 = Failed |
| Crib Wall | Retaining wall. |
| Current Replacement Value (CRV) | The value of an asset determined by the estimated cost of replacing it. |
| Def type | Deficiency Type: Trail Structure, Drainage, Erosion, Obstacle, Trail Location, Other. |
| Deferred Maintenance (DM) | Maintenance that was not performed when scheduled. |

| | |
|---|---|
| Elem ID | Unique identifier for each trail section: Org Code-Trail Number-Section Number. |
| Facility Condition Index (FCI) | DM/CRV |
| Grouped Features | Grouped features include non-unique signs (mileposts, interpretive signs, species identification, etc.), water bars, check dams, steps, drain and drainage dips. For any given grouped feature, a GPS point and photo are taken for the first occurrence only and the total number of features in the group are entered into the “quantity” field of the data dictionary. |
| Info Type | Type of accessibility information available at trailhead: brochure, sign or other. |
| Item | Item on which the “Action” (see above) will be performed. |
| Manage_Use | Managed use of the trail: HIKE, BIKE, NSPC (non-specified), PACK, POR (portage), SNOWSHOE, XSKI (cross-country ski), OTHER. |
| MP | Distance of a trail feature or deficiency from the Trailhead. |
| Puncheon | Log footbridge used in area of poor drainage. |
| Raised Trail Structure | Boardwalk, Turnpike, Puncheon. |
| T Class | Trail Class: I-V (see Appendix ? for trail class descriptions). |
| Tr Desig | Trail Designation: Standard (Std), National Historic Trail (NHT), National Recreation Trail (NRT), National Scenic Trail (NST). |
| Turnpike | Trail tread elevated with dirt, rock or other aggregate from parallel side ditches and held in place by logs. |