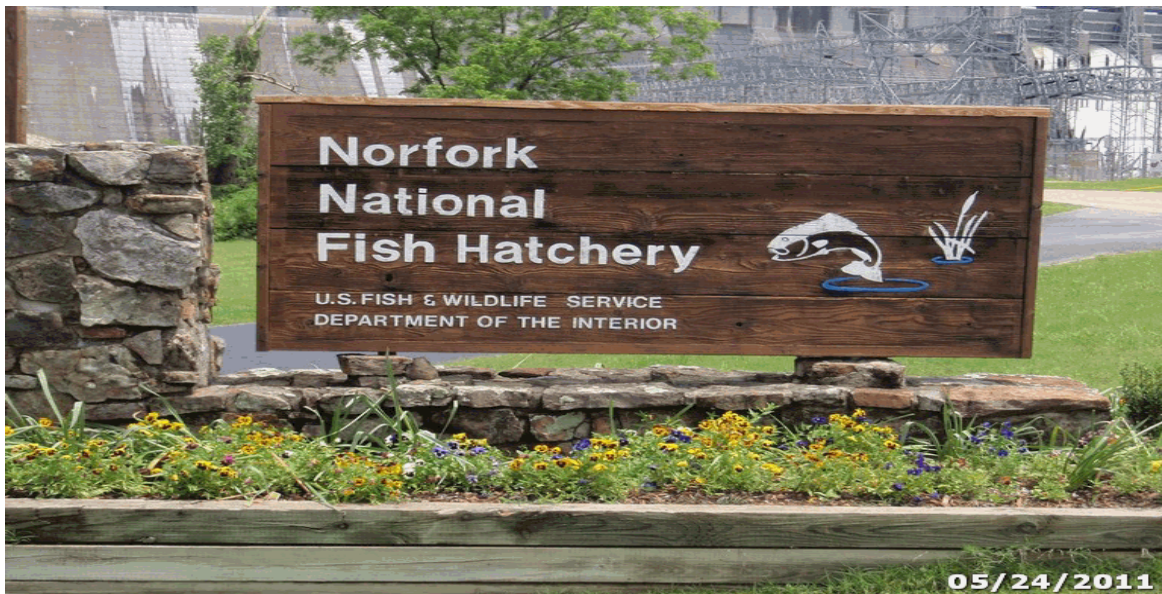


The Trail Inventory of Norfolk NFH Mountain Home, AR



Prepared By:
Federal Highway Administration
Central Federal Lands Highway Division
February, 2012



TABLE OF CONTENTS

<u>SECTION</u>	<u>PAGE</u>
I. <u>TRAIL AND TRAIL FEATURE SUMMARIES</u>	1 - 1
II. <u>TRAIL LOCATION MAPS</u>	2 - 1
III. <u>TRAIL IDENTIFICATION LIST</u>	3 - 1
IV. <u>TRAIL CONDITION RATING SHEETS</u>	4 - 1
V. <u>TRAIL DEFICIENCY RATING SHEETS</u>	5 - 1
VI. <u>PHOTOGRAPHIC SHEETS</u>	6 - 1
VII. <u>GLOSSARY</u>	i

Norfolk NFH

Trail and Trail Feature Summaries

Trail Miles and Percentages by Surface Type and Condition

Trail Surface Type	Excellent		Total
	Miles	%	Miles
Concrete	0.18	100%	0.18
Boardwalk	0.06	100%	0.06
Total	0.24	100%	0.24

Trail Miles and Percentages by Trail Classification and Condition

Trail Classification	Excellent		Total
	Miles	%	Miles
TC4	0.15	100%	0.15
TC5	0.09	100%	0.09
Total	0.24	100%	0.24

*Admin Roads are included in the inventory but are not rated for condition.

Trail Features

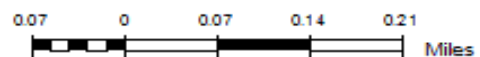
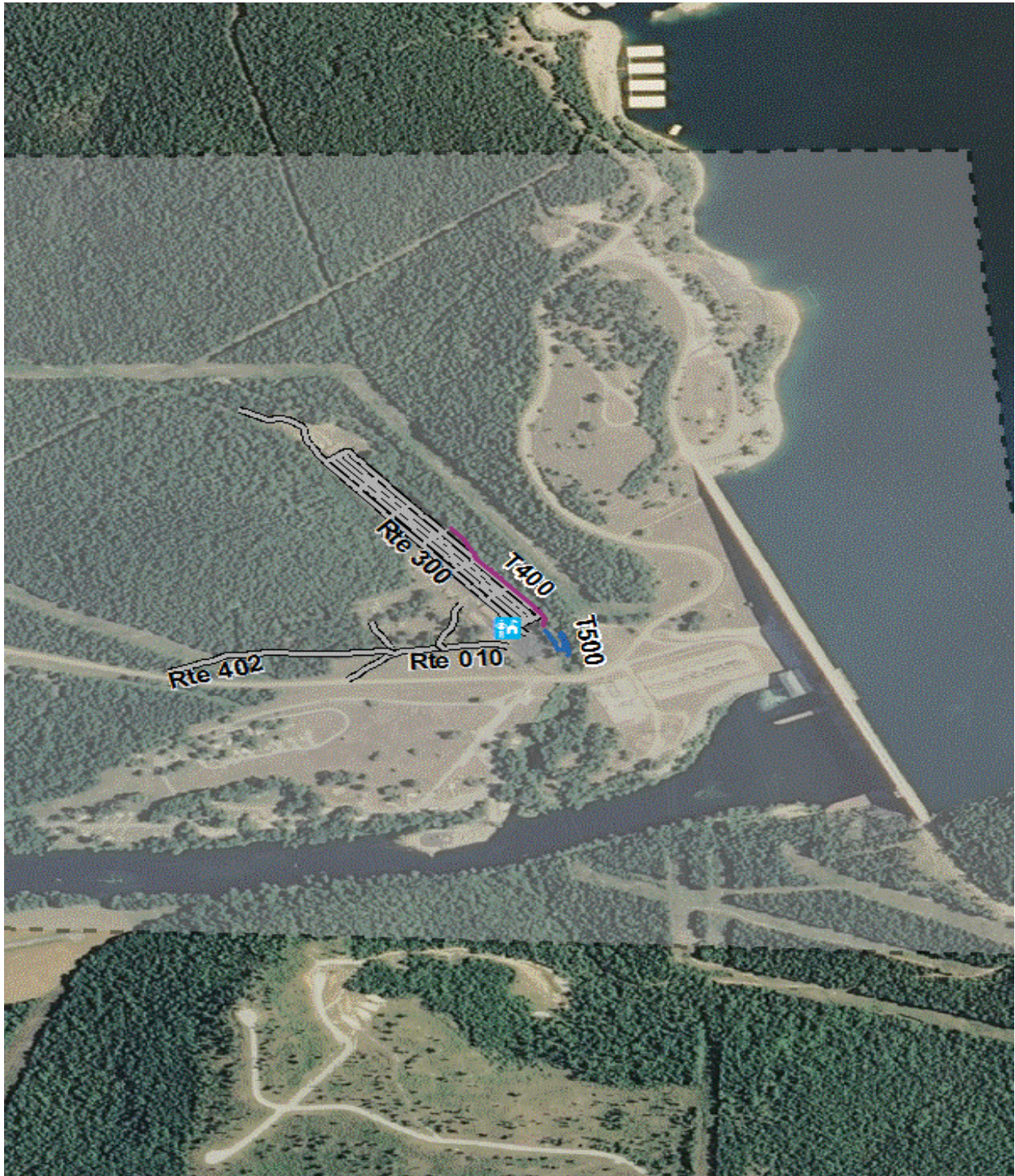
Trail Number	Feature Type	Quantity	Grouped Feature	Milepost	Photo
T400	Trailhead	1	No	0.00	NORF_C2_0007
T400	Bench	1	No	0.01	
T400	Step: Log -each	17	No	0.01	
T400	Step: Log -each	24	No	0.07	
T400	Crib: Log -cf	320	No	0.11	
T400	Bench	1	No	0.13	
T400	Bench	1	No	0.14	
T400	Bench	1	No	0.15	
T500	Trailhead	1	No	0.00	NORF_C2_0001
T500	Sign	1	No	0.01	NORF_C2_0002
T500	Sign	1	No	0.02	NORF_C2_0003
T500	Begin Section	1	No	0.03	NORF_C2_0006
T500	Max Grade- %	9	No	0.04	
T500	Bench	1	No	0.06	
T500	Bench	1	No	0.09	

sf - square feet

lf - linear feet

cf - cubic feet

Norfolk NFH Trail Location Map



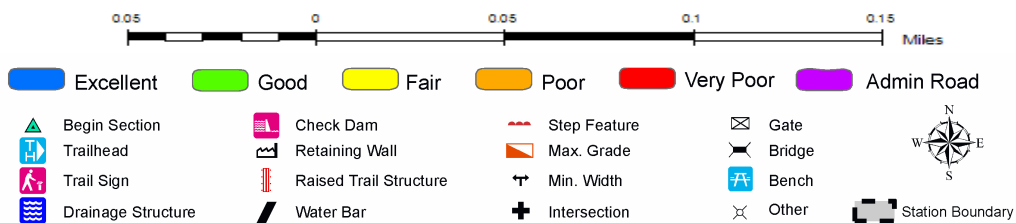
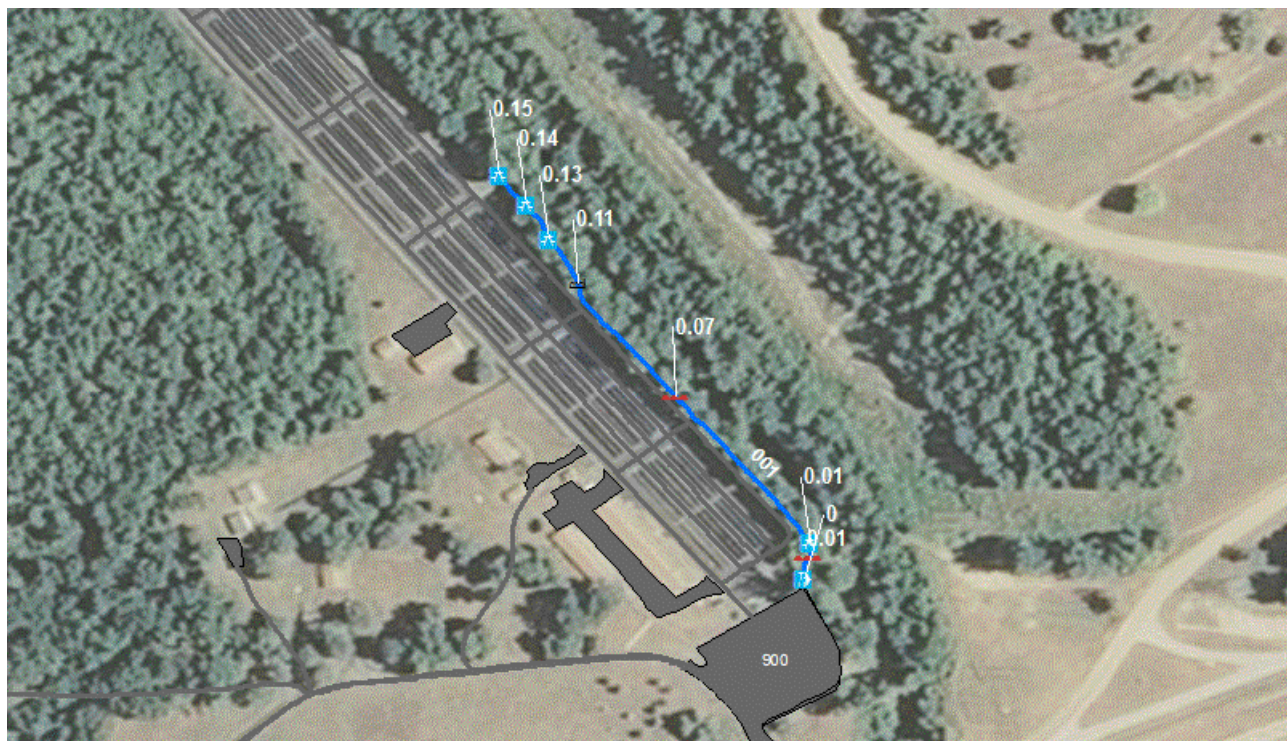
Trails ID

Station Name: Norfolk NFH

Org Code: 43280

Trail Number	Trail Name	Surface Type	SAMMS	Trail Mileage	Trail Description (Begin and End point of trail)
T400	Dry Run Creek Trail	Concrete	N/A	0.15	From Visitor Center Parking Area (Rte 900) to end of trail
T500	Dry Run Creek Boardwalk	Boardwalk	10017358	0.06	From Visitor Center Parking Area (Rte 900) to end of trail
T500	Dry Run Creek Boardwalk	Concrete	10017358	0.03	From Visitor Center Parking Area (Rte 900) to end of trail

TRAIL CONDITION



Trail Name: Dry Run Creek Trail
Trail Number: T400

Refuge Name: Norfolk NFH
Region: 4

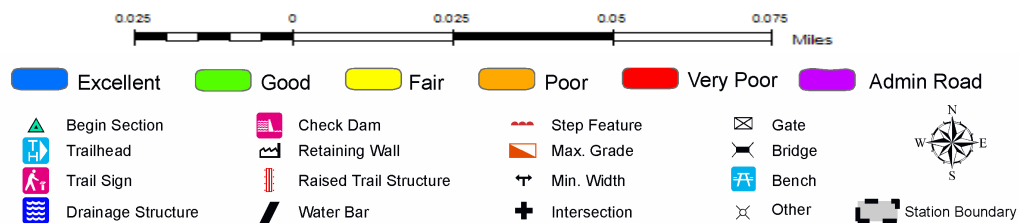
Total Length: 0.15 Miles

Section Number	001
Section Length (miles)	0.15
SAMMS Number	N/A
Rating Date	05/04/2006
Trail Section Information	
Trail Class	TC4
Surface Type	Concrete
Surface Firmness	Paved
Width (inches)	45
Average Grade (%)	2.7
Average X-slope (%)	1.00
Trail Condition Information	
Deferred Maintenance	
CRV	\$13,995
FCI	0.00
Condition	Excellent

Trail Condition TOTALS

Deferred Maintenance	CRV	FCI	Condition
	\$13,995	0.00	Excellent

TRAIL CONDITION



Trail Name: Dry Run Creek Boardwalk
Trail Number: T500

Refuge Name: Norfolk NFH
Region: 4

Total Length: 0.09 Miles

Section Number	001	002
Section Length (miles)	0.03	0.06
SAMMS Number	10017358	10017358
Rating Date	05/04/2006	05/04/2006
Trail Section Information		
Trail Class	TC5	TC5
Surface Type	Concrete	Boardwalk
Surface Firmness	Paved	Hard
Width (inches)	71	71
Average Grade (%)	5.3	5.3
Average X-slope (%)	1.50	1.50
Trail Condition Information		
Deferred Maintenance		
CRV	\$4,415	\$30,493
FCI	0.00	0.00
Condition	Excellent	Excellent

Trail Condition TOTALS

Deferred Maintenance	CRV	FCI	Condition
	\$34,908	0.00	Excellent

TRAIL DEFICIENCY

No Deficiencies

PHOTOGRAPHIC SHEET

TRAIL NUMBER: T400
STATION: Norfolk NFH
DATE: 05/04/2006



Photo # NORF_C2_0007 - MP 0.00 - Trailhead

TRAIL NUMBER: T500
STATION: Norfolk NFH
DATE: 05/04/2006



Photo # NORF_C2_0001 - MP 0.00 - Trailhead

PHOTOGRAPHIC SHEET

TRAIL NUMBER: T500

STATION: Norfolk NFH

DATE: 05/04/2006



Photo # NORF_C2_0002 - MP 0.01 - Sign

TRAIL NUMBER: T500

STATION: Norfolk NFH

DATE: 05/04/2006



Photo # NORF_C2_0003 - MP 0.02 - Sign

PHOTOGRAPHIC SHEET

TRAIL NUMBER: T500

STATION: Norfolk NFH

DATE: 12/20/2006



Photo # NORF_C2_0006 - MP 0.03 - Begin Section

Glossary of Terms and Abbreviations

Acc Info	Accessibility information available at trailhead.
Action	Action required to correct deficiency.
Admin Road	Administration Road. Admin Roads signed and advertised as trails are included in the trail inventory but a condition assessment is NOT done.
Alt SAMMS	SAMMS number of Alternate Facility Type.
Alt Type	Alternate Facility Type. Trail lies on a feature such as a levee, dam, administrative road or bridge, which has a separate SAMMS number.
AvgGrade	The average grade of the trail (%). The average of five measurements for trails less than two miles and ten measurements for trails equal to or greater than 2 miles.
AvgSlope	The average cross-slope of the trail (%). The average of five measurements for trails less than two miles and ten measurements for trails equal to or greater than 2 miles.
Check Dam	A small dam constructed across a drainage ditch, swale, or channel to lower the speed of concentrated flows.
Condition	Subjective rating of trail based on Facility Condition Index (FCI): FCI \leq .01 = Excellent FCI .02 - .05 = Good FCI .06 - .10 = Fair FCI .11 - .20 = Poor FCI $>$.20 = Failed
Crib Wall	Retaining wall.
Current Replacement Value (CRV)	The value of an asset determined by the estimated cost of replacing it.
Def type	Deficiency Type: Trail Structure, Drainage, Erosion, Obstacle, Trail Location, Other.
Deferred Maintenance (DM)	Maintenance that was not performed when scheduled.

Elem ID	Unique identifier for each trail section: Org Code-Trail Number-Section Number.
Facility Condition Index (FCI)	DM/CRV
Grouped Features	Grouped features include non-unique signs (mileposts, interpretive signs, species identification, etc.), water bars, check dams, steps, drain and drainage dips. For any given grouped feature, a GPS point and photo are taken for the first occurrence only and the total number of features in the group are entered into the “quantity” field of the data dictionary.
Info Type	Type of accessibility information available at trailhead: brochure, sign or other.
Item	Item on which the “Action” (see above) will be performed.
Manage_Use	Managed use of the trail: HIKE, BIKE, NSPC (non-specified), PACK, POR (portage), SNOWSHOE, XSKI (cross-country ski), OTHER.
MP	Distance of a trail feature or deficiency from the Trailhead.
Puncheon	Log footbridge used in area of poor drainage.
Raised Trail Structure	Boardwalk, Turnpike, Puncheon.
T Class	Trail Class: I-V (see Appendix ? for trail class descriptions).
Tr Desig	Trail Designation: Standard (Std), National Historic Trail (NHT), National Recreation Trail (NRT), National Scenic Trail (NST).
Turnpike	Trail tread elevated with dirt, rock or other aggregate from parallel side ditches and held in place by logs.