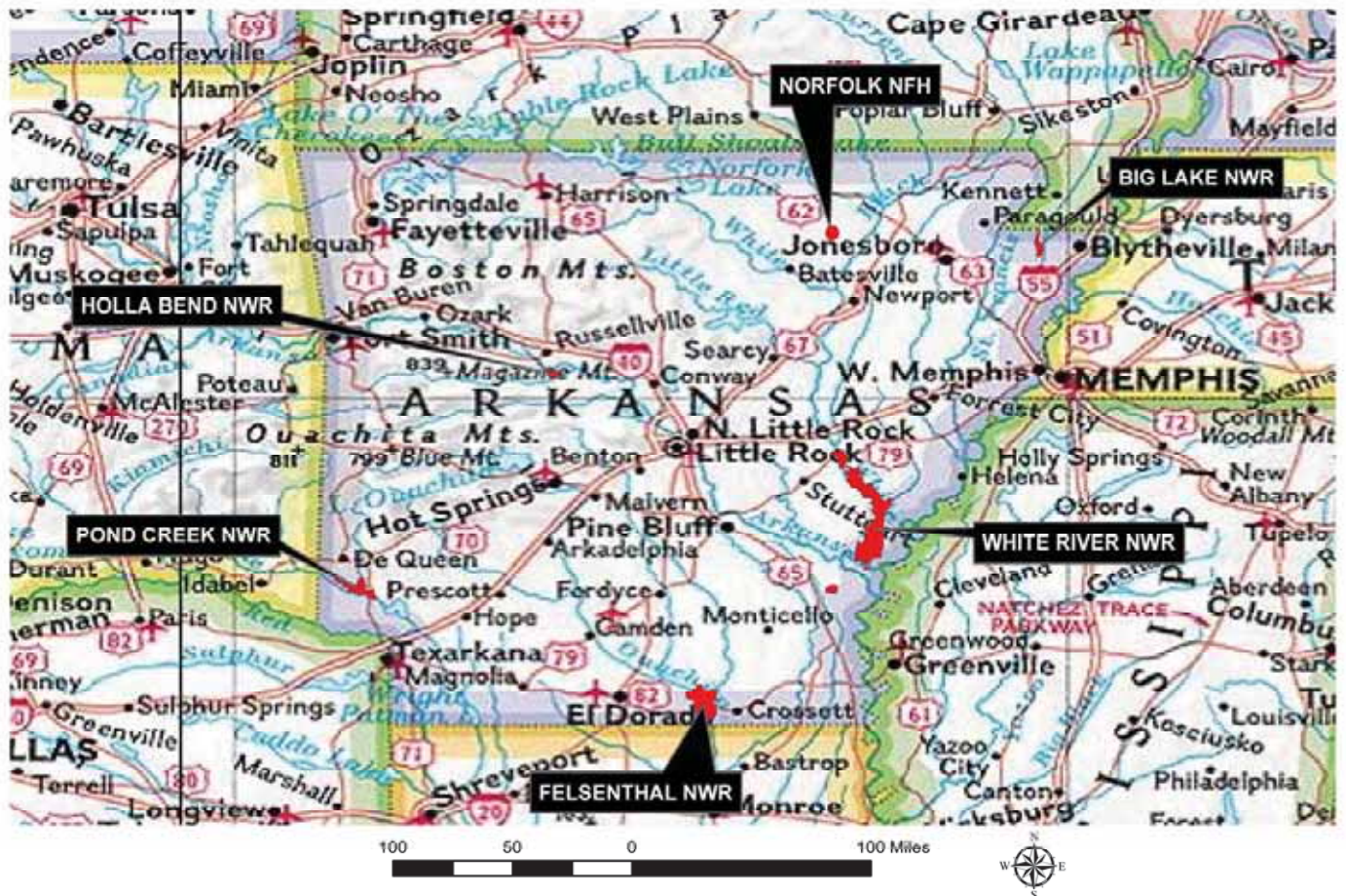


The Trail Inventory of U.S. Fish and Wildlife Service Stations In ARKANSAS



Prepared By:
Federal Highway Administration
Central Federal Lands Highway Division
May-July 2006



TABLE OF CONTENTS

<u>CHAPTER</u>		<u>PAGE</u>
1.	<u>AR STATE SUMMARY</u>	
	Table of Contents	1-1
	List of Refuges	1-2
	Mileage by Trail Class, Condition, and Surface	1-3
2-7.	<u>REFUGE SUMMARIES</u>	
	Mileage by Trail Class, Condition, and Surface	X-1
	Trail Location Map	X-2
	Trail Identification	X-3
	Condition and Deficiency Sheets	X-4
	Photographic Sheets	X-5
8.	<u>APPENDIX</u>	
	Glossary of Terms and Abbreviations	8-1
	Trail Classification System	8-4

FWS Stations in Arkansas with Trails

Station Name	Trail Miles	Chapter
Big Lake NWR	1.16	2
Felsenthal NWR	3.82	3
Holla Bend NWR	0.94	4
Norfolk NFH	0.24	5
Pond Creek NWR	3.81	6
White River NWR	1.42	7

Arkansas FWS Stations Trail Summaries

Trail Miles and Percentages by Surface Type and Condition

Trail Surface Type	Mileage by Trail Condition												Total Miles
	Excellent		Good		Fair		Poor		Very Poor		Not Rated*		
	MILES	%	MILES	%	MILES	%	MILES	%	MILES	%	MILES	%	
Native	6.32	55%	0.68	6%	0.42	4%		0%		0%		0%	7.42
Gravel	0.01	0%		0%		0%		0%		0%		0%	0.01
Asphalt	1.18	10%		0%		0%		0%		0%		0%	1.18
Concrete	0.18	2%		0%		0%		0%		0%		0%	0.18
Turnpike		0%		0%		0%		0%		0%		0%	0.00
Boardwalk	0.12	1%		0%		0%		0%		0%		0%	0.12
Puncheon		0%		0%		0%		0%		0%		0%	0.00
Woodchips		0%		0%		0%		0%		0%		0%	0.00
Mowed	2.13	19%	0.35	3%		0%		0%		0%		0%	2.48
Admin Road		0%		0%		0%		0%		0%		0%	0.00
Other		0%		0%		0%		0%		0%		0%	0.00
Totals	9.94	87%	1.03	9%	0.42	4%	0.00	0%	0.00	0%	0.00	0%	11.39

Trail Miles and Percentages by Trail Classification and Condition

Trail Classification	Mileage by Trail Condition												Total Miles
	Excellent		Good		Fair		Poor		Very Poor		Not Rated*		
	MILES	%	MILES	%	MILES	%	MILES	%	MILES	%	MILES	%	
TC1	0.02	0%		0%		0%		0%		0%		0%	0.02
TC2	0.32	3%		0%		0%		0%		0%		0%	0.32
TC3	8.12	71%	0.68	6%	0.42	4%		0%		0%		0%	9.22
TC4	0.96	8%	0.35	3%		0%		0%		0%		0%	1.31
TC5	0.52	5%		0%		0%		0%		0%		0%	0.52
Totals	9.94	87%	1.03	9%	0.42	4%	0.00	0%	0.00	0%	0.00	0%	11.39

* Admin Roads are included in the inventory but are not rated for condition.

The Trail Inventory of Big Lake National Wildlife Refuge Manila, Arkansas



**Prepared By:
Federal Highway Administration
Central Federal Lands Highway Division
May, July 2006**



Big Lake NWR

Trail and Trail Feature Summaries

Trail Miles and Percentages by Surface Type and Condition

Trail Surface Type	Mileage by Trail Condition												Total Miles
	Excellent		Good		Fair		Poor		Very Poor		Not Rated*		
	MILES	%	MILES	%	MILES	%	MILES	%	MILES	%	MILES	%	
Native		0%		0%		0%		0%		0%		0%	0.00
Gravel		0%		0%		0%		0%		0%		0%	0.00
Asphalt		0%		0%		0%		0%		0%		0%	0.00
Concrete		0%		0%		0%		0%		0%		0%	0.00
Turnpike		0%		0%		0%		0%		0%		0%	0.00
Boardwalk		0%		0%		0%		0%		0%		0%	0.00
Puncheon		0%		0%		0%		0%		0%		0%	0.00
Woodchips		0%		0%		0%		0%		0%		0%	0.00
Mowed	0.81	70%	0.35	30%		0%		0%		0%		0%	1.16
Admin Road		0%		0%		0%		0%		0%		0%	0.00
Other		0%		0%		0%		0%		0%		0%	0.00
Totals	0.81	70%	0.35	30%	0.00	0%	0.00	0%	0.00	0%	0.00	0%	1.16

Trail Miles and Percentages by Trail Classification and Condition

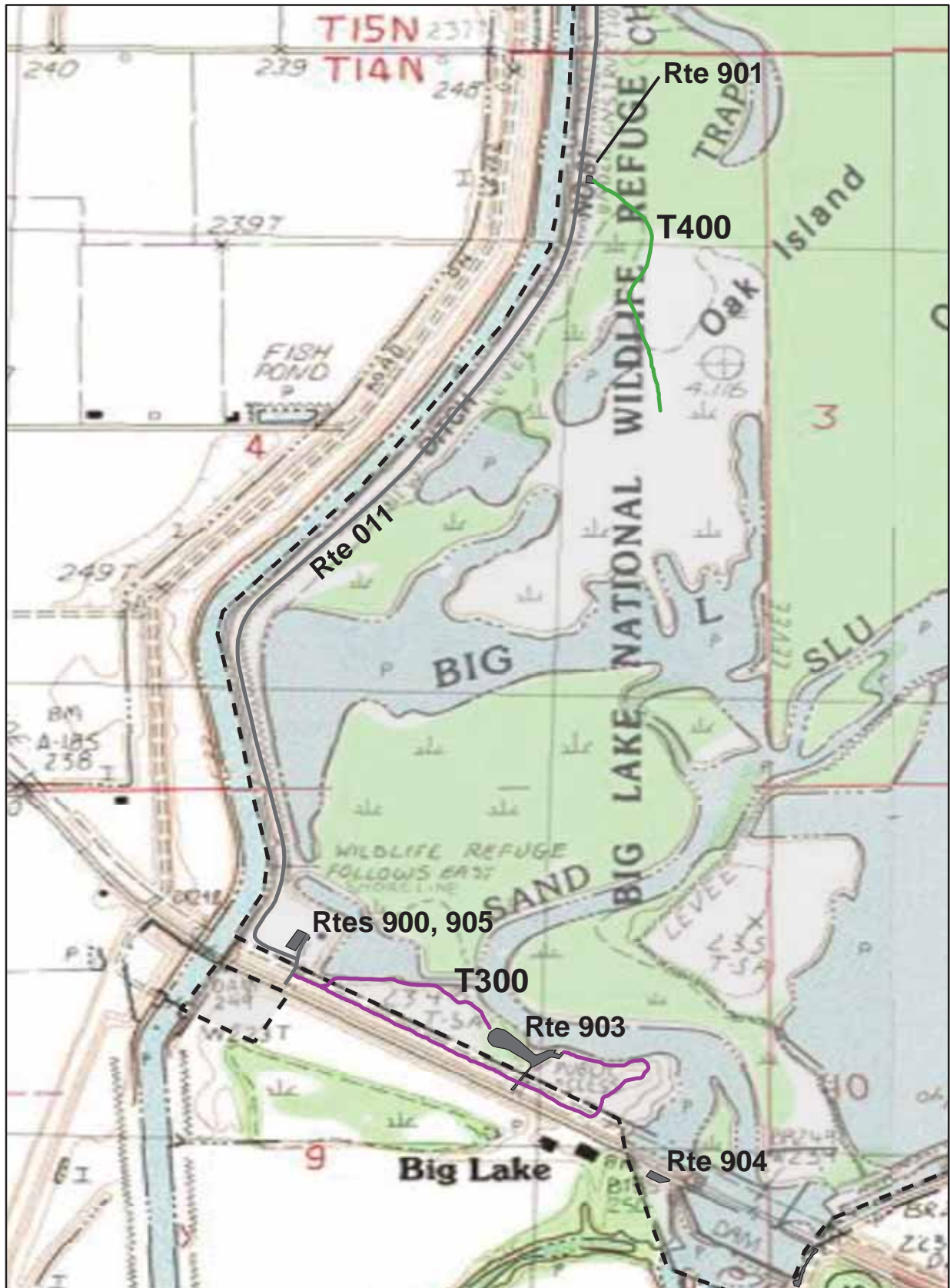
Trail Classification	Mileage by Trail Condition												Total Miles
	Excellent		Good		Fair		Poor		Very Poor		Not Rated*		
	MILES	%	MILES	%	MILES	%	MILES	%	MILES	%	MILES	%	
TC1		0%		0%		0%		0%		0%		0%	0.00
TC2		0%		0%		0%		0%		0%		0%	0.00
TC3	0.81	70%		0%		0%		0%		0%		0%	0.81
TC4		0%	0.35	30%		0%		0%		0%		0%	0.35
TC5		0%		0%		0%		0%		0%		0%	0.00
Totals	0.81	70%	0.35	30%	0.00	0%	0.00	0%	0.00	0%	0.00	0%	1.16

* Admin Roads are included in the inventory but are not rated for condition.

Trail Features

Trail Number	Feature Type	Quantity	Grouped Feature	Milepost	Photo
T300	Sign	2	No	0.00	87
T300	Sign	2	No	0.01	96
T300	Sign	2	No	0.29	97
T300	Culvert -lf	9	No	0.59	N/A
T300	Sign	2	No	0.59	99
T300	Sign	1	No	0.59	100
T400	Sign	3	No	0.00	81
T400	Sign	1	No	0.35	85
sf-square feet lf-linear feet cf-cubic feet					

BIG LAKE NATIONAL WILDLIFE REFUGE TRAIL LOCATION MAP



Station Boundary



HQ/VC

0 0.25 0.5 Miles

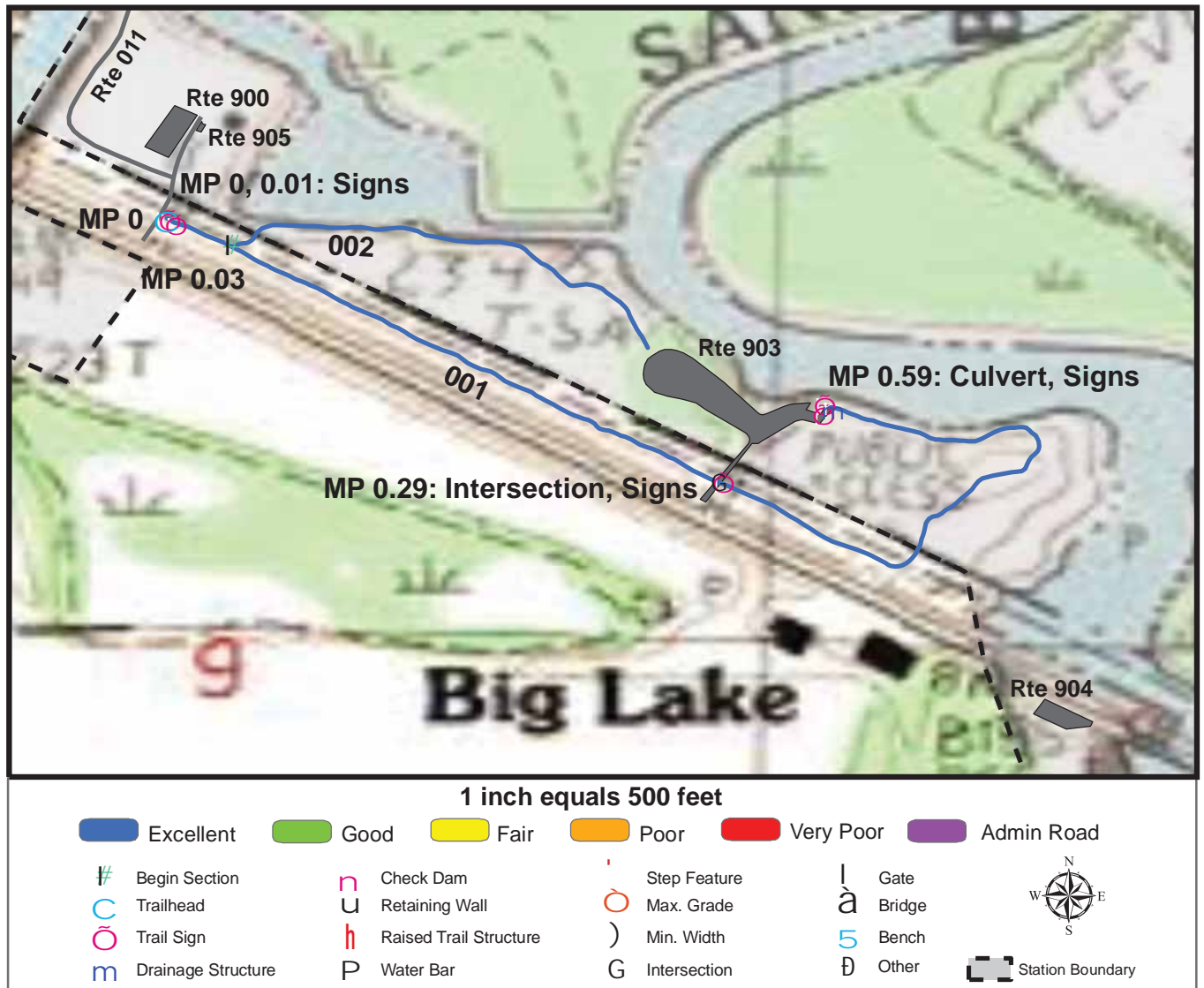
TRAILS ID

Station Name: Big Lake NWR

Org. Code: 43515

Trail #	Trail Name	Surface Type	SAMMS	Trail Mileage	Trail Description (Begin and End point of trail)
T300	Bright Trail	Mowed	10039667	0.81	From East of Refuge Entrance Road (Rte 010) MP 0.01 to End of loop, north of Sec 001
T400	Oak Island Trail	Mowed	10039668	0.35	From East of Oak Island Parking (Rte 901) to Dead end at End-Of-Trail sign

TRAIL CONDITION



Trail Name: Bright Trail

Refuge Name: Big Lake NWR

Trail Number: T300

Region: 4

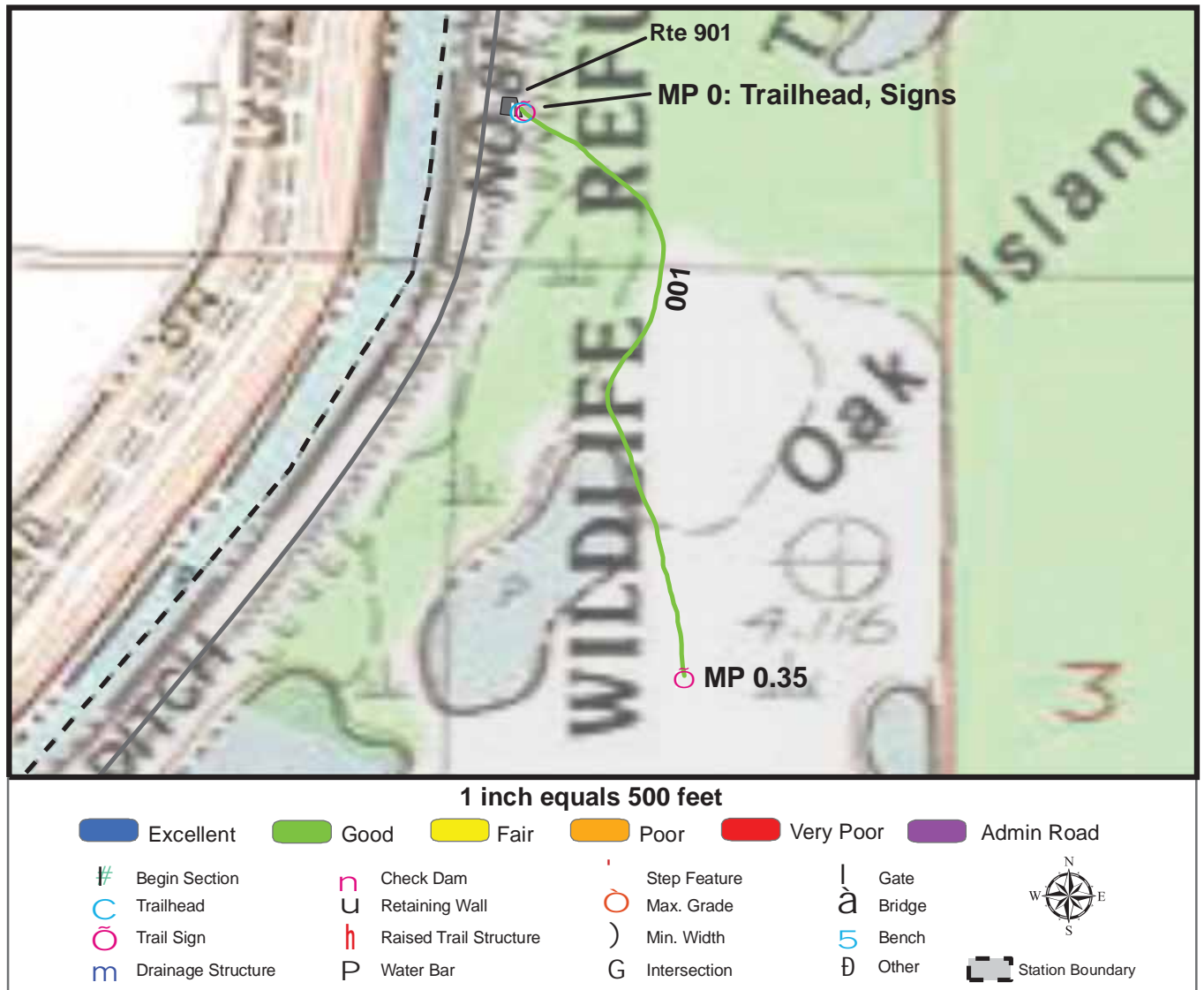
TOTAL LENGTH: 0.81 Miles

Section Number	001	002			
Section Length (miles)	0.59	0.22			
SAMMS Number	10039667	10039667			
Rating Date	7/27/2006	7/27/2006			
Trail Section Information					
Trail Class	TC3	TC3			
Surface Type	Mowed	Mowed			
Surface Firmness	Firm	Firm			
Width (inches)	72	72			
Average Grade (%)	2.8	2.8			
Average X-slope (%)	3.5	3.5			
Trail Condition Information					
Deferred Maintenance	\$0	\$0			
CRV	\$21586	\$7798			
FCI	0	0			
Condition	Excellent	Excellent			

Trail Condition TOTALS

Deferred Maintenance	CRV	FCI	Condition
\$0	\$29384	0	Excellent

TRAIL CONDITION



Trail Name: Oak Island Trail

Refuge Name: Big Lake NWR

Trail Number: T400

Region: 4

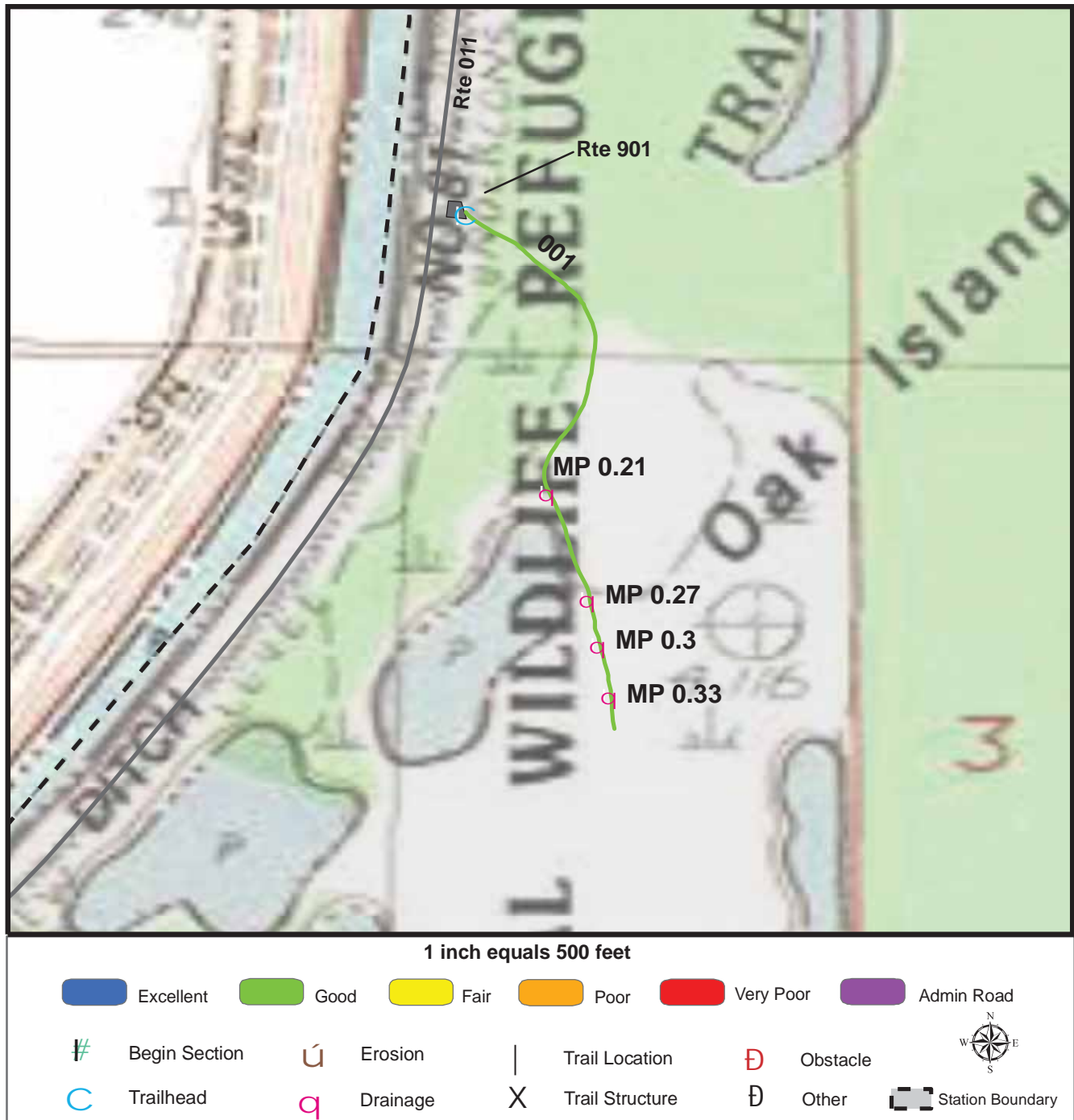
TOTAL LENGTH: 0.35 Miles

Section Number	001				
Section Length (miles)	0.35				
SAMMS Number	10039668				
Rating Date	5/1/2006				
Trail Section Information					
Trail Class	TC4				
Surface Type	Mowed				
Surface Firmness	Soft				
Width (inches)	182				
Average Grade (%)	1.2				
Average X-slope (%)	1.7				
Trail Condition Information					
Deferred Maintenance	\$353				
CRV	\$31047				
FCI	0.011				
Condition	Good				

Trail Condition TOTALS

Deferred Maintenance	CRV	FCI	Condition
\$353	\$31047	0.011	Good

TRAIL DEFICIENCY



Trail Name: Oak Island Trail

Refuge Name: Big Lake NWR

Trail Number: T400

Region: 4

TOTAL LENGTH: 0.35 Miles

Mile Post	0.21	0.3	0.27	0.33
Section Number	001	001	001	001
Photo Number	83	84	N/A	N/A
Deficiency	Drainage	Drainage	Drainage	Drainage
Action	Build/Add	Build/Add	Build/Add	Build/Add
Item	Drainage Dips -each	Drainage Dips -each	Tread -sf	Tread -sf
Quantity	1	1	35	25
Deferred Maintenance	\$99	\$99	\$83	\$72

PHOTOGRAPHIC SHEET

TRAIL NUMBER: **T300**

STATION: Big Lake NWR

DATE: 7/27/2006



Photo # 94 - MP 0.0 - Trailhead

TRAIL NUMBER: **T300**

STATION: Big Lake NWR

DATE: 7/27/2006



Photo # 87 - MP 0.0 - Signs

PHOTOGRAPHIC SHEET

TRAIL NUMBER: **T300**
STATION: Big Lake NWR
DATE: 7/27/2006



Photo # 96 - MP 0.01 - Signs

TRAIL NUMBER: **T300**
STATION: Big Lake NWR
DATE: 7/27/2006



Photo # 97 - MP 0.29 - Signs

PHOTOGRAPHIC SHEET

TRAIL NUMBER: **T300**

STATION: Big Lake NWR

DATE: 7/27/2006



Photo # 100 - MP 0.59 - Sign

TRAIL NUMBER: **T300**

STATION: Big Lake NWR

DATE: 7/27/2006



Photo # 99 - MP 0.59 - Signs

PHOTOGRAPHIC SHEET

TRAIL NUMBER: **T400**

STATION: Big Lake NWR

DATE: 5/1/2006



Photo # 82 - MP 0.0 - Trailhead

TRAIL NUMBER: **T400**

STATION: Big Lake NWR

DATE: 5/1/2006



Photo # 81 - MP 0.0 - Signs

PHOTOGRAPHIC SHEET

TRAIL NUMBER: **T400**

STATION: Big Lake NWR

DATE: 5/1/2006



Photo # 83 - MP 0.21 - Drainage Deficiency

TRAIL NUMBER: **T400**

STATION: Big Lake NWR

DATE: 5/1/2006



Photo # 84 - MP 0.3 - Drainage Deficiency

PHOTOGRAPHIC SHEET

TRAIL NUMBER: **T400**

STATION: Big Lake NWR

DATE: 5/1/2006



Photo # 85 - MP 0.35 - Sign

The Trail Inventory of Felsenthal National Wildlife Refuge Crossett, Arkansas



**Prepared By:
Federal Highway Administration
Central Federal Lands Highway Division
June 2006**



Felsenthal NWR

Trail and Trail Feature Summaries

Trail Miles and Percentages by Surface Type and Condition

Trail Surface Type	Mileage by Trail Condition												Total Miles
	Excellent		Good		Fair		Poor		Very Poor		Not Rated*		
	MILES	%	MILES	%	MILES	%	MILES	%	MILES	%	MILES	%	
Native	2.58	68%		0%	0.42	11%		0%		0%		0%	3.00
Gravel	0.01	0%		0%		0%		0%		0%		0%	0.01
Asphalt	0.43	11%		0%		0%		0%		0%		0%	0.43
Concrete		0%		0%		0%		0%		0%		0%	0.00
Turnpike		0%		0%		0%		0%		0%		0%	0.00
Boardwalk		0%		0%		0%		0%		0%		0%	0.00
Puncheon		0%		0%		0%		0%		0%		0%	0.00
Woodchips		0%		0%		0%		0%		0%		0%	0.00
Mowed	0.38	10%		0%		0%		0%		0%		0%	0.38
Admin Road		0%		0%		0%		0%		0%		0%	0.00
Other		0%		0%		0%		0%		0%		0%	0.00
Totals	3.40	89%	0.00	0%	0.42	11%	0.00	0%	0.00	0%	0.00	0%	3.82

Trail Miles and Percentages by Trail Classification and Condition

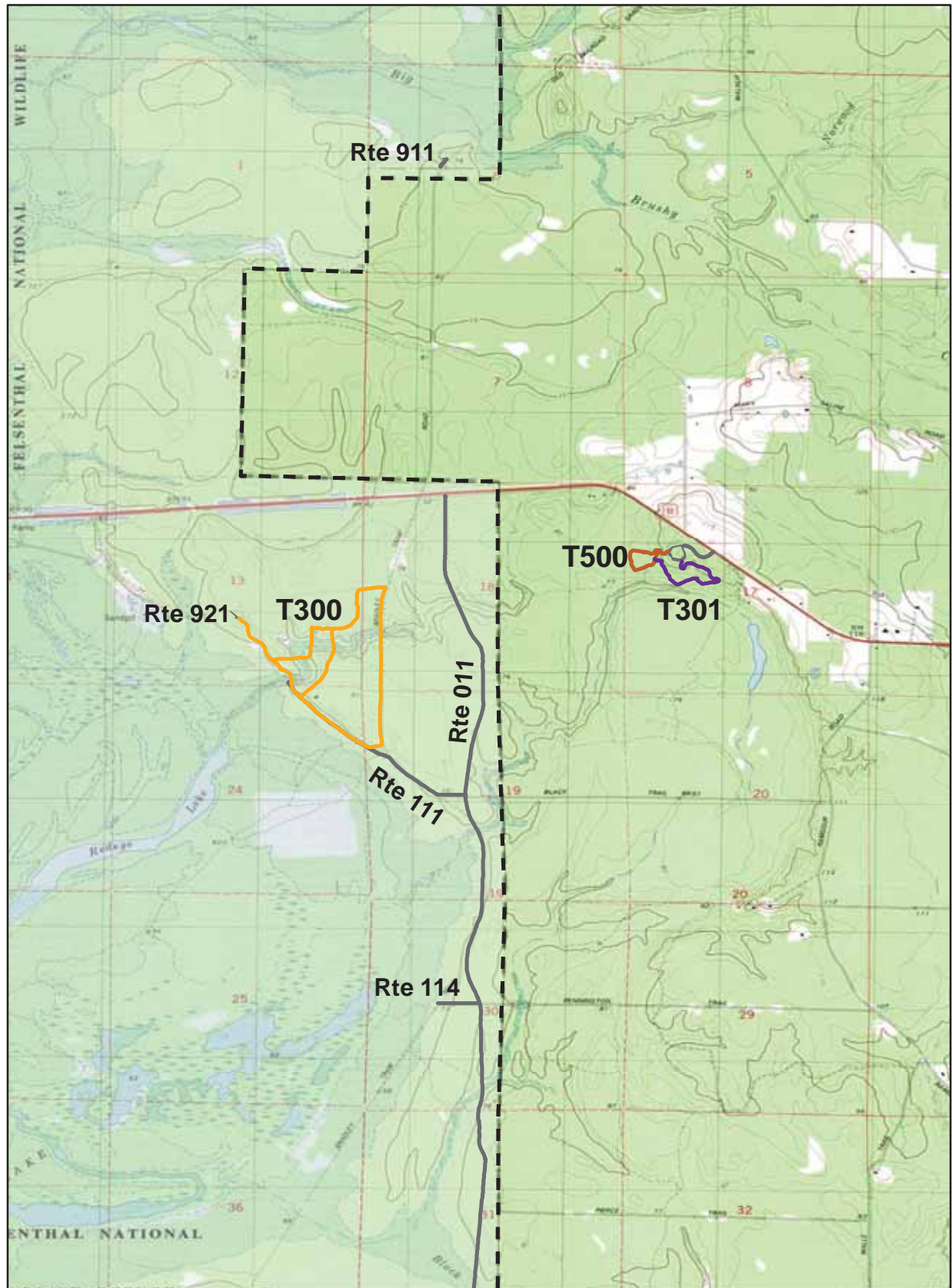
Trail Classification	Mileage by Trail Condition												Total Miles
	Excellent		Good		Fair		Poor		Very Poor		Not Rated*		
	MILES	%	MILES	%	MILES	%	MILES	%	MILES	%	MILES	%	
TC1		0%		0%		0%		0%		0%		0%	0.00
TC2		0%		0%		0%		0%		0%		0%	0.00
TC3	2.97	78%		0%	0.42	11%		0%		0%		0%	3.39
TC4		0%		0%		0%		0%		0%		0%	0.00
TC5	0.43	11%		0%		0%		0%		0%		0%	0.43
Totals	3.40	89%	0.00	0%	0.42	11%	0.00	0%	0.00	0%	0.00	0%	3.82

* Admin Roads are included in the inventory but are not rated for condition.

Trail Features

Trail Number	Feature Type	Quantity	Grouped Feature	Milepost	Photo
T300	Sign	6	Yes	N/A	4
T300	Sign	58	Yes	N/A	2
T300	Sign	13	Yes	N/A	6
T300	Bridge -sf	486	No	0.37	N/A
T300	Bridge -sf	65	No	0.56	N/A
T300	Sign	1	No	0.76	21
T300	Boardwalk -lf	46	No	0.78	123
T300	Sign	4	Yes	N/A	3
T300	Sign	1	No	1.40	N/A
T300	Sign	5	Yes	N/A	5
T300	Bridge -sf	420	No	1.44	N/A
T300	Sign	1	No	1.47	N/A
T300	Sign	2	Yes	N/A	N/A
T301	Sign	2	No	0.00	136
T301	Sign	1	No	0.03	137
T301	Sign	2	No	0.04	138
T301	Puncheon -lf	80	No	0.11	139
T301	Sign	7	Yes	N/A	140
T500	Sign	1	No	0.00	101
T500	Sign	1	No	0.01	102
T500	Sign	11	Yes	N/A	103
T500	Sign	6	Yes	N/A	126
T500	Sign	1	No	0.33	129
T500	Sign	2	No	0.38	132
T500	Lookout/Ob Deck	1	No	0.38	N/A
sf-square feet lf-linear feet cf- cubic feet					

FELSENTHAL NATIONAL WILDLIFE REFUGE TRAIL LOCATION MAP



Station Boundary



HQ/VC



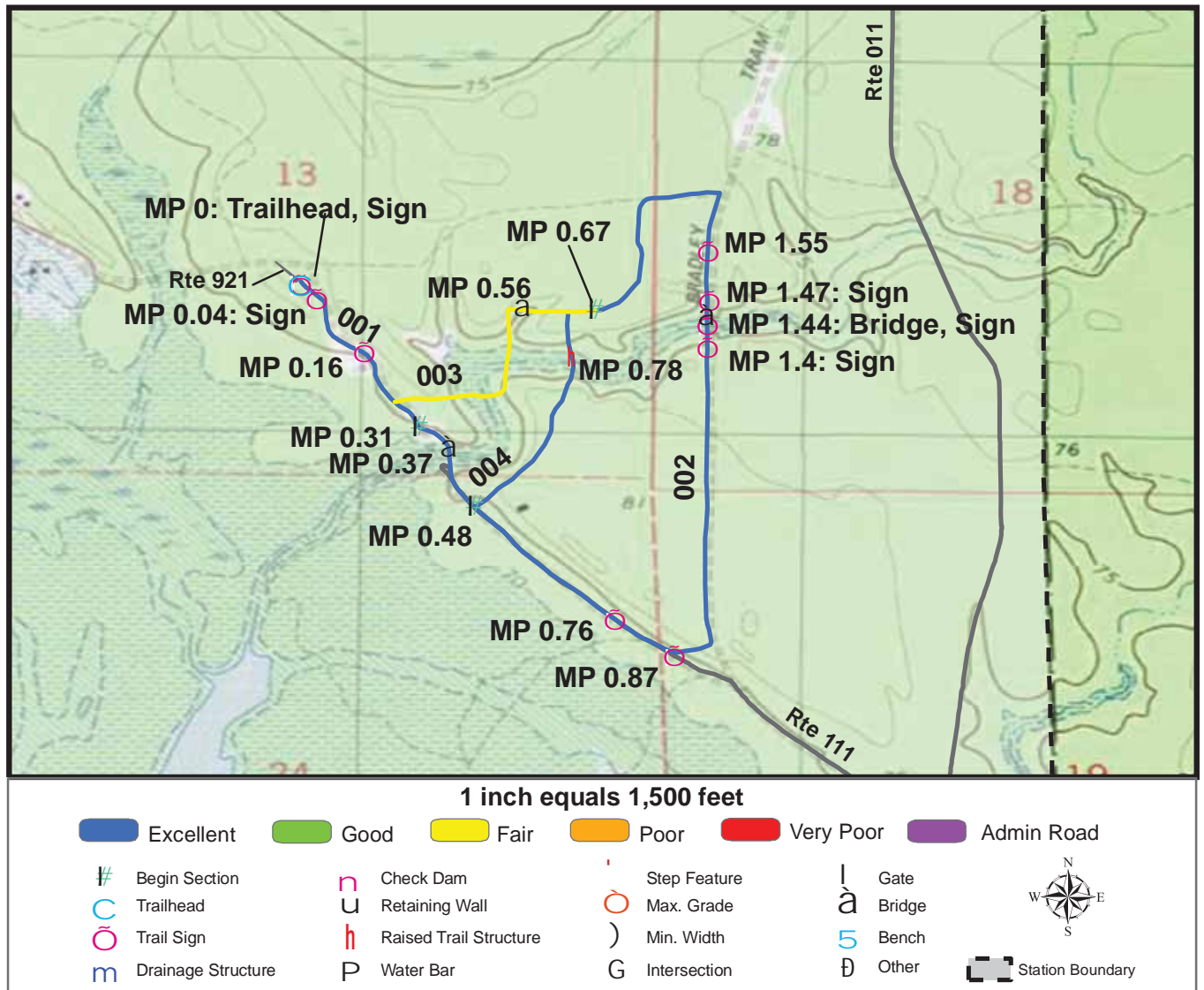
TRAILS ID

Station Name: Felsenthal NWR

Org. Code: 43579

Trail #	Trail Name	Surface Type	SAMMS	Trail Mileage	Trail Description (Begin and End point of trail)
T300	Sand Prairie Trail	Mowed, Native	N/A	2.78	From Sand Prairie Trail Parking (Rte 921) to end of trail loop at Sec 001
T301	Woodland Wildlife Trail Unpaved	Native, Gravel	10018071	0.61	From Woodland Wildlife Trail (T500) to Visitor Center Parking (Rte 900)
T500	Woodland Wildlife Trail	Asphalt	10018068	0.43	From Visitor Center Parking (Rte 900) to end of trail loop

TRAIL CONDITION



Trail Name: Sand Prairie Trail

Refuge Name: Felsenthal NWR

Trail Number: T300

Region: 4

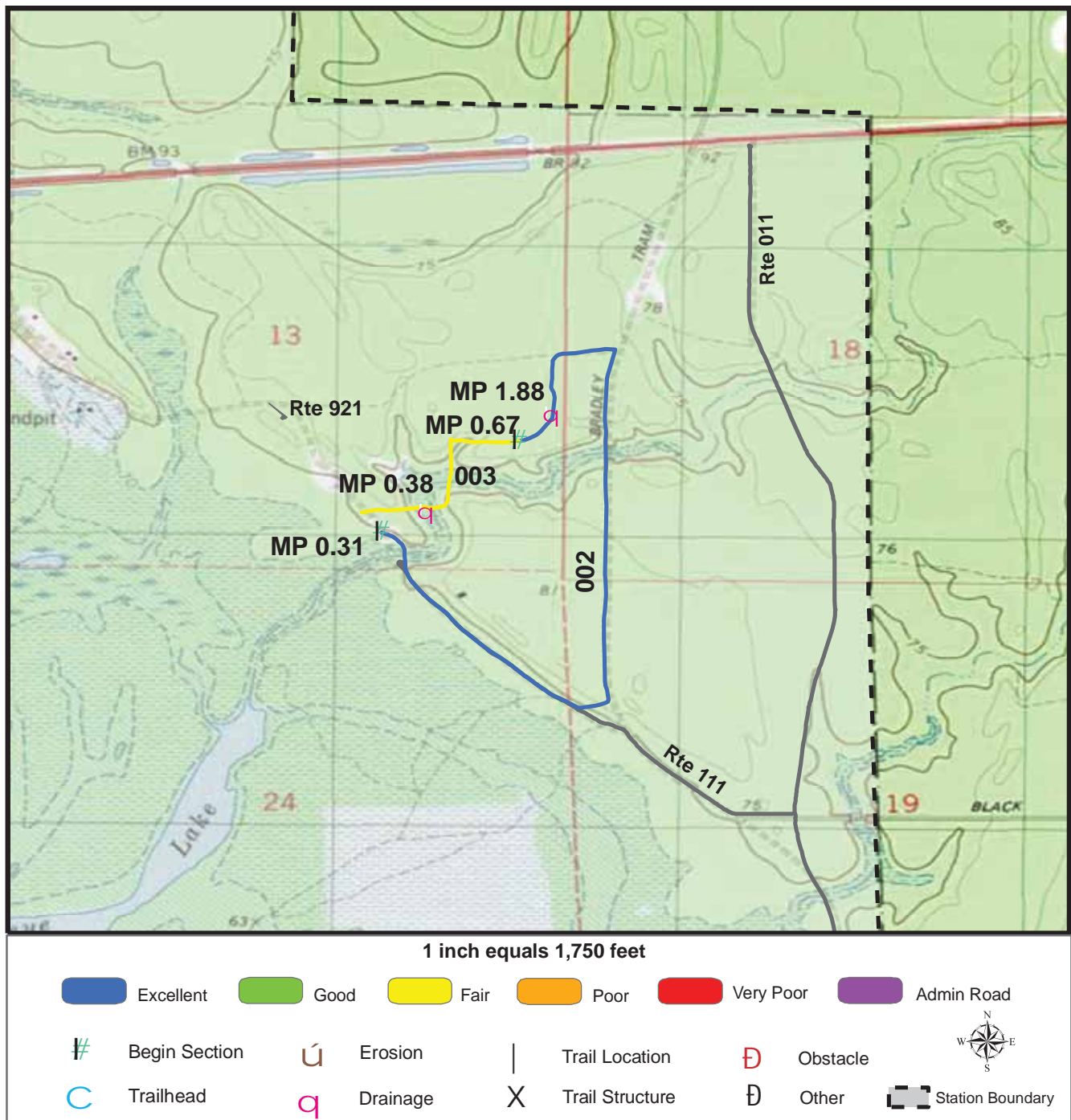
TOTAL LENGTH: 2.78 Miles

Section Number	001	002	003	004
Section Length (miles)	0.31	1.67	0.42	0.38
SAMMS Number	N/A	N/A	N/A	N/A
Rating Date	6/2/2006	6/2/2006	6/2/2006	6/3/2006
Trail Section Information				
Trail Class	TC3	TC3	TC3	TC3
Surface Type	Native	Native	Native	Mowed
Surface Firmness	Firm	Firm	Firm	Firm
Width (inches)	120	120	120	120
Average Grade (%)	0.9	0.9	0.9	0.9
Average X-slope (%)	1.9	1.9	1.9	1.9
Trail Condition Information				
Deferred Maintenance	\$0	\$204	\$8517	\$0
CRV	\$59829	\$364711	\$83398	\$19428
FCI	0	0.001	0.102	0
Condition	Excellent	Excellent	Fair	Excellent

Trail Condition TOTALS

Deferred Maintenance	CRV	FCI	Condition
\$8721	\$527366	0.017	Good

TRAIL DEFICIENCY



Trail Name: Sand Prairie Trail

Refuge Name: Felsenthal NWR

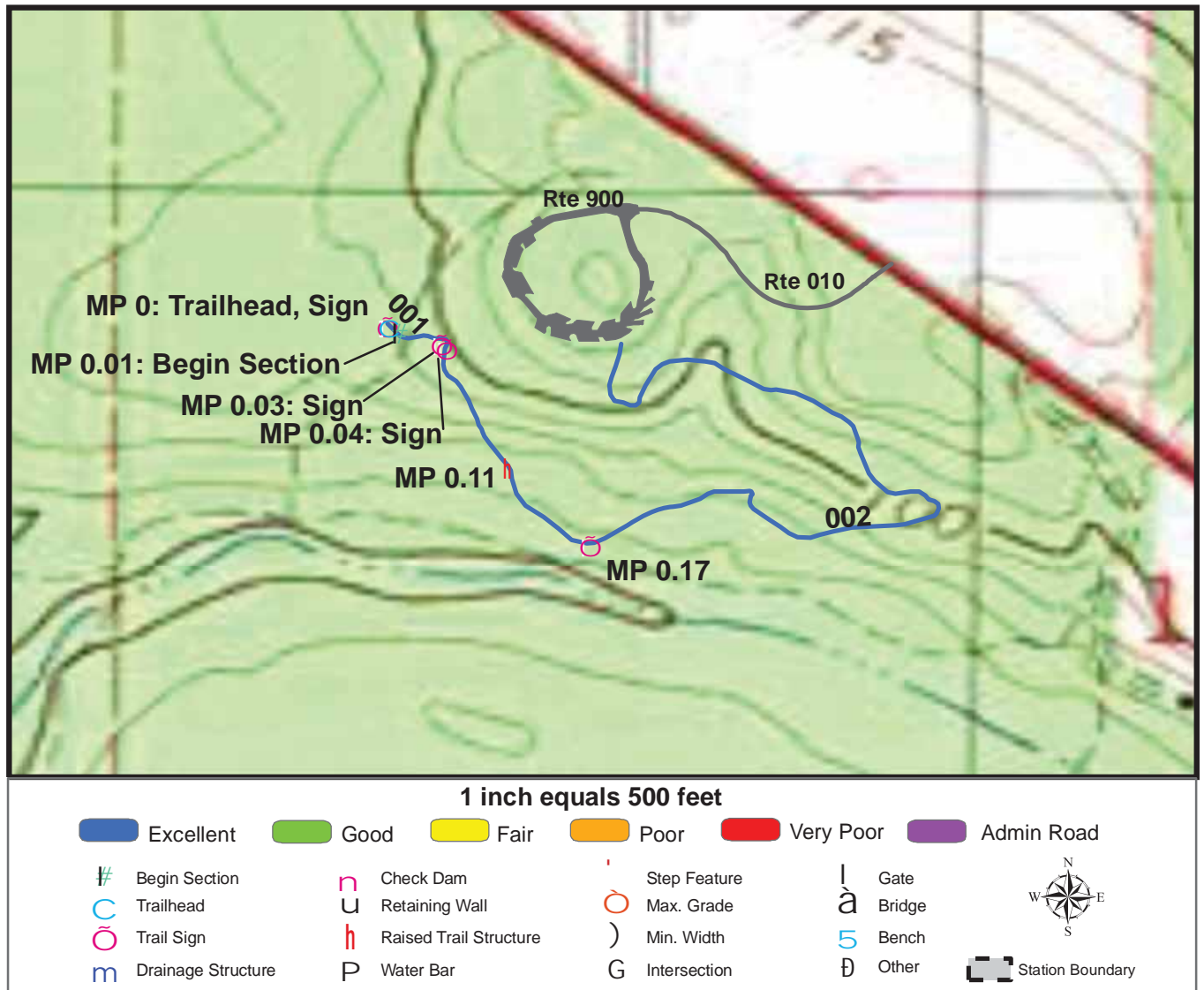
Trail Number: T300

Region: 4

TOTAL LENGTH: 2.78 Miles

Mile Post	1.88	0.38		
Section Number	002	003		
Photo Number	8	9		
Deficiency	Drainage	Drainage		
Action	Build/Add	Build/Add		
Item	Step: Log -each	Bridge -sf		
Quantity	2	180		
Deferred Maintenance	\$204	\$8517		

TRAIL CONDITION



Trail Name: Woodland Wildlife Trail Unpaved

Refuge Name: Felsenthal NWR

Trail Number: T301

Region: 4

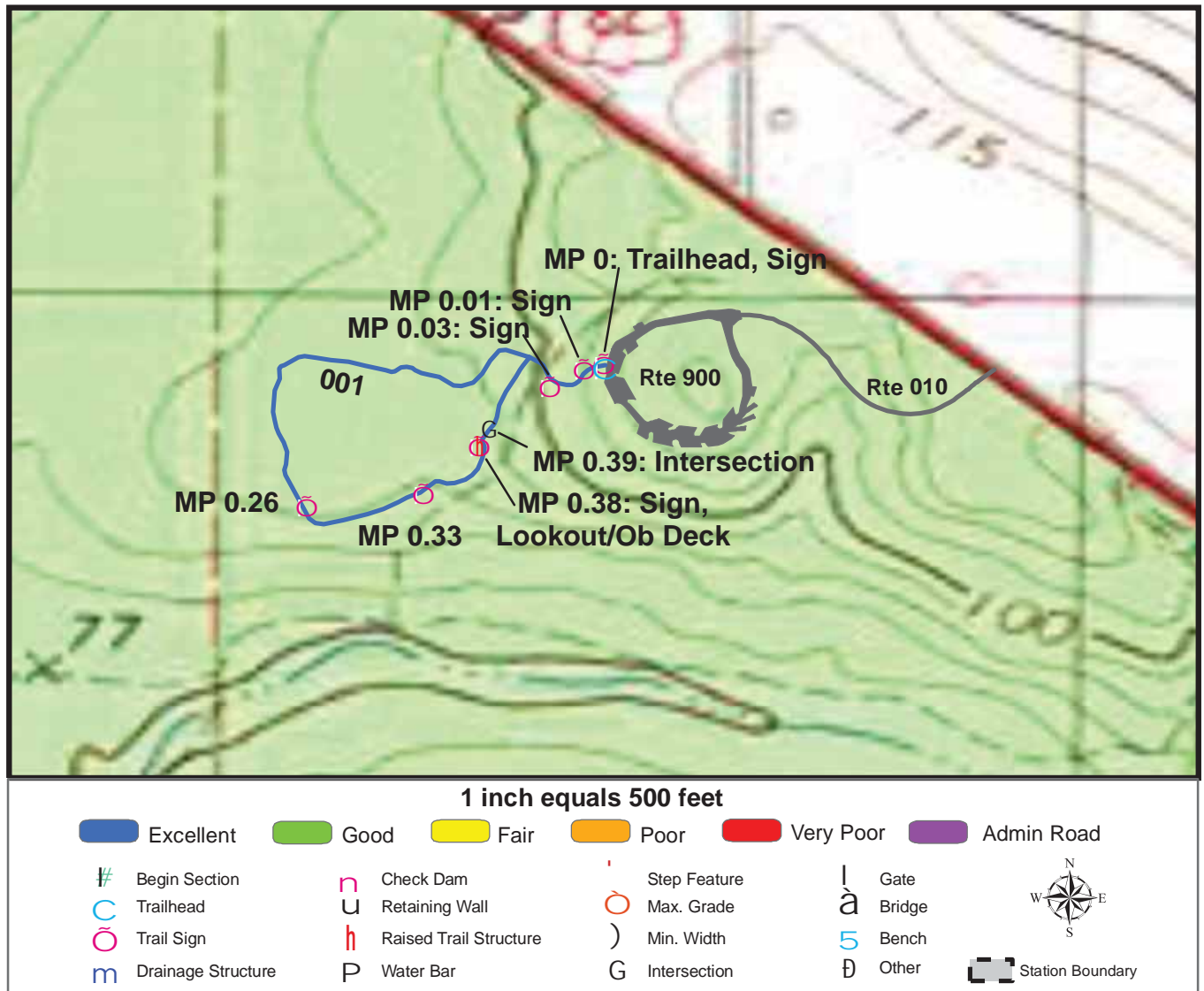
TOTAL LENGTH: 0.61 Miles

Section Number	001	002			
Section Length (miles)	0.01	0.6			
SAMMS Number	10018071	10018071			
Rating Date	6/3/2006	6/3/2006			
Trail Section Information					
Trail Class	TC3	TC3			
Surface Type	Gravel	Native			
Surface Firmness	Firm	Firm			
Width (inches)	60	36			
Average Grade (%)	2.8	2.8			
Average X-slope (%)	3.7	3.7			
Trail Condition Information					
Deferred Maintenance	\$0	\$0			
CRV	\$890	\$35012			
FCI	0	0			
Condition	Excellent	Excellent			

Trail Condition TOTALS

Deferred Maintenance	CRV	FCI	Condition
\$0	\$35902	0	Excellent

TRAIL CONDITION



Trail Name: Woodland Wildlife Trail

Refuge Name: Felsenthal NWR

Trail Number: T500

Region: 4

TOTAL LENGTH: 0.43 Miles

Section Number	001				
Section Length (miles)	0.43				
SAMMS Number	10018068				
Rating Date	6/2/2006				
Trail Section Information					
Trail Class	TC5				
Surface Type	Asphalt				
Surface Firmness	Paved				
Width (inches)	120				
Average Grade (%)	2.4				
Average X-slope (%)	2.2				
Trail Condition Information					
Deferred Maintenance	\$0				
CRV	\$114861				
FCI	0				
Condition	Excellent				

Trail Condition TOTALS

Deferred Maintenance	CRV	FCI	Condition
\$0	\$114861	0	Excellent

PHOTOGRAPHIC SHEET

TRAIL NUMBER: **T300**

STATION: Felsenthal NWR

DATE: 6/2/2006



Photo # 1 - MP 0.0 - Trailhead

TRAIL NUMBER: **T300**

STATION: Felsenthal NWR

DATE: 6/2/2006



Photo # 4 - MP 0.0 - Sign (Grouped Feature)

PHOTOGRAPHIC SHEET

TRAIL NUMBER: **T300**

STATION: Felsenthal NWR

DATE: 6/2/2006



Photo # 2 - MP 0.04 - Sign (Grouped Feature)

TRAIL NUMBER: **T300**

STATION: Felsenthal NWR

DATE: 6/2/2006



Photo # 6 - MP 0.16 - Sign (Grouped Feature)

PHOTOGRAPHIC SHEET

TRAIL NUMBER: **T300**

STATION: Felsenthal NWR

DATE: 6/2/2006



Photo # 7 - MP 0.31 - Begin Section 002

TRAIL NUMBER: **T300**

STATION: Felsenthal NWR

DATE: 6/2/2006



Photo # 9 - MP 0.38 - Drainage Deficiency

PHOTOGRAPHIC SHEET

TRAIL NUMBER: **T300**

STATION: Felsenthal NWR

DATE: 6/3/2006



Photo # 115 - MP 0.48 - Begin Section 004

TRAIL NUMBER: **T300**

STATION: Felsenthal NWR

DATE: 6/3/2006



Photo # 123 - MP 0.78 - Boardwalk

PHOTOGRAPHIC SHEET

TRAIL NUMBER: **T300**

STATION: Felsenthal NWR

DATE: 6/2/2006



Photo # 3 - MP 0.87 - Sign (Grouped Feature)

TRAIL NUMBER: **T300**

STATION: Felsenthal NWR

DATE: 6/2/2006



Photo # 5 - MP 1.44 - Sign (Grouped Feature)

PHOTOGRAPHIC SHEET

TRAIL NUMBER: **T300**

STATION: Felsenthal NWR

DATE: 6/2/2006



Photo # 8 - MP 1.88 - Drainage Deficiency

TRAIL NUMBER: **T301**

STATION: Felsenthal NWR

DATE: 6/3/2006



Photo # 135 - MP 0.0 - Trailhead

PHOTOGRAPHIC SHEET

TRAIL NUMBER: **T301**

STATION: Felsenthal NWR

DATE: 6/3/2006



Photo # 136 - MP 0.0 - Sign

TRAIL NUMBER: **T301**

STATION: Felsenthal NWR

DATE: 6/3/2006



Photo # 137 - MP 0.03 - Sign

PHOTOGRAPHIC SHEET

TRAIL NUMBER: **T301**

STATION: Felsenthal NWR

DATE: 6/3/2006



Photo # 138 - MP 0.04 - Sign

TRAIL NUMBER: **T301**

STATION: Felsenthal NWR

DATE: 6/3/2006



Photo # 139 - MP 0.11 - Puncheon

PHOTOGRAPHIC SHEET

TRAIL NUMBER: **T301**

STATION: Felsenthal NWR

DATE: 6/3/2006



Photo # 140 - MP 0.17 - Sign (Grouped Feature)

TRAIL NUMBER: **T500**

STATION: Felsenthal NWR

DATE: 6/2/2006



Photo # 100 - MP 0.0 - Trailhead

PHOTOGRAPHIC SHEET

TRAIL NUMBER: **T500**

STATION: Felsenthal NWR

DATE: 6/2/2006



Photo # 101 - MP 0.0 - Sign

TRAIL NUMBER: **T500**

STATION: Felsenthal NWR

DATE: 6/2/2006



Photo # 102 - MP 0.01 - Sign

PHOTOGRAPHIC SHEET

TRAIL NUMBER: **T500**

STATION: Felsenthal NWR

DATE: 6/2/2006



Photo # 103 - MP 0.03 - Sign (Grouped Feature)

TRAIL NUMBER: **T500**

STATION: Felsenthal NWR

DATE: 6/3/2006



Photo # 126 - MP 0.26 - Sign (Grouped Feature)

PHOTOGRAPHIC SHEET

TRAIL NUMBER: **T500**

STATION: Felsenthal NWR

DATE: 6/3/2006



Photo # 129 - MP 0.33 - Sign

TRAIL NUMBER: **T500**

STATION: Felsenthal NWR

DATE: 6/3/2006



Photo # 132 - MP 0.38 - Sign

The Trail Inventory of Holla Bend National Wildlife Refuge Dardanelle, Arkansas



**Prepared By:
Federal Highway Administration
Central Federal Lands Highway Division
May 2006**



Holla Bend NWR

Trail and Trail Feature Summaries

Trail Miles and Percentages by Surface Type and Condition

Trail Surface Type	Mileage by Trail Condition												Total Miles
	Excellent		Good		Fair		Poor		Very Poor		Not Rated*		
	MILES	%	MILES	%	MILES	%	MILES	%	MILES	%	MILES	%	
Native		0%		0%		0%		0%		0%		0%	0.00
Gravel		0%		0%		0%		0%		0%		0%	0.00
Asphalt		0%		0%		0%		0%		0%		0%	0.00
Concrete		0%		0%		0%		0%		0%		0%	0.00
Turnpike		0%		0%		0%		0%		0%		0%	0.00
Boardwalk		0%		0%		0%		0%		0%		0%	0.00
Puncheon		0%		0%		0%		0%		0%		0%	0.00
Woodchips		0%		0%		0%		0%		0%		0%	0.00
Mowed	0.94	100%		0%		0%		0%		0%		0%	0.94
Admin Road		0%		0%		0%		0%		0%		0%	0.00
Other		0%		0%		0%		0%		0%		0%	0.00
Totals	0.94	100%	0.00	0%	0.00	0%	0.00	0%	0.00	0%	0.00	0%	0.94

Trail Miles and Percentages by Trail Classification and Condition

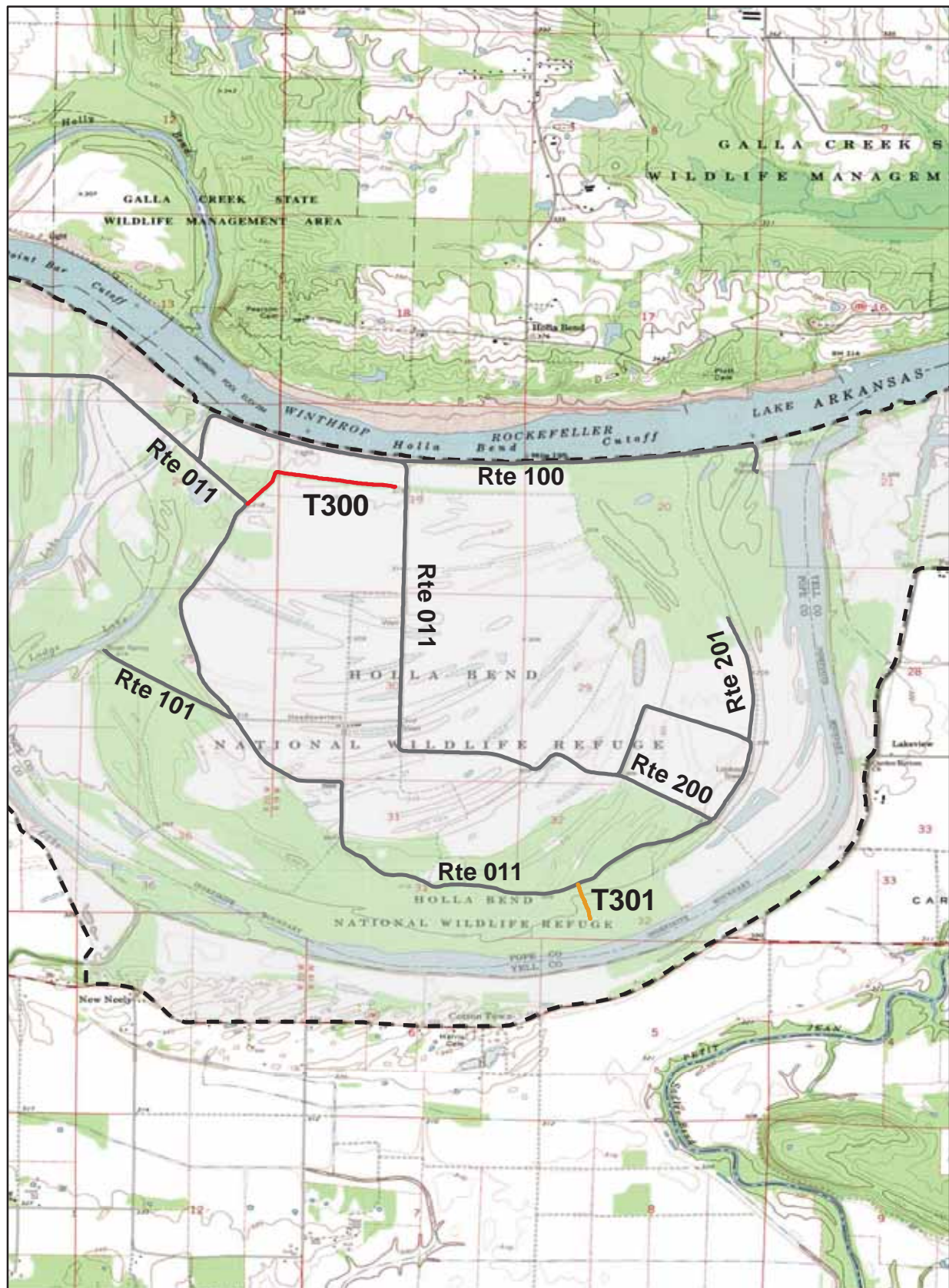
Trail Classificatio n	Mileage by Trail Condition												Total Miles
	Excellent		Good		Fair		Poor		Very Poor		Not Rated*		
	MILES	%	MILES	%	MILES	%	MILES	%	MILES	%	MILES	%	
TC1		0%		0%		0%		0%		0%		0%	0.00
TC2		0%		0%		0%		0%		0%		0%	0.00
TC3	0.94	100%		0%		0%		0%		0%		0%	0.94
TC4		0%		0%		0%		0%		0%		0%	0.00
TC5		0%		0%		0%		0%		0%		0%	0.00
Totals	0.94	100%	0.00	0%	0.00	0%	0.00	0%	0.00	0%	0.00	0%	0.94

* Admin Roads are included in the inventory but are not rated for condition.

Trail Features


Trail Number	Feature Type	Quantity	Grouped Feature	Milepost	Photo
T300	Sign	2	No	0.00	1
T300	Sign	1	No	0.00	4
T300	Sign	1	No	0.01	3
T301	Sign	1	No	0.00	6
sf-square feet					
lf-linear feet					
cf-cubic feet					

HOLLA BEND NATIONAL WILDLIFE REFUGE TRAIL LOCATION MAP



 Station Boundary

@ HQ/VC

 Miles
0 1 2

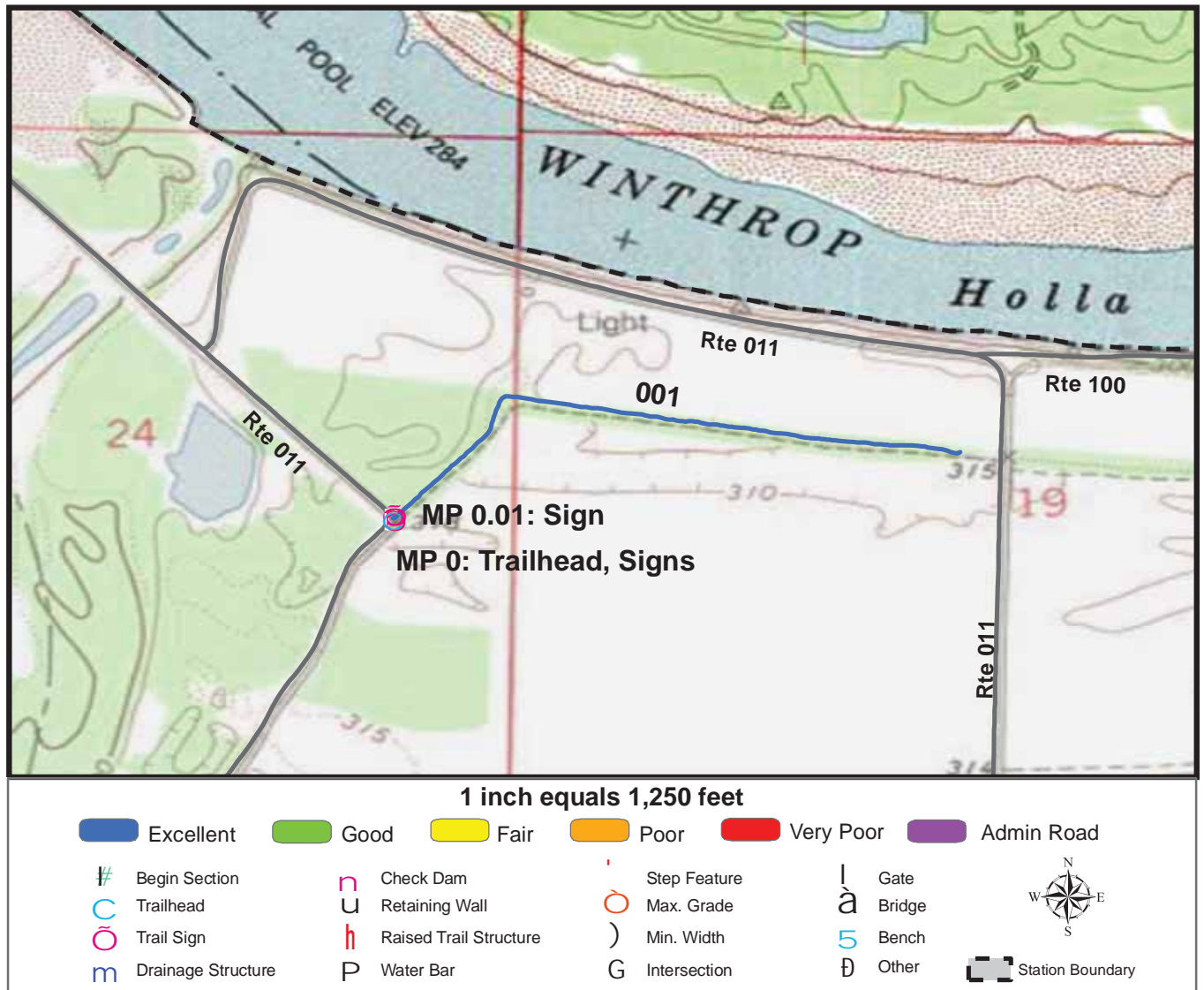
TRAILS ID

Station Name: Holla Bend NWR

Org. Code: 43590

Trail #	Trail Name	Surface Type	SAMMS	Trail Mileage	Trail Description (Begin and End point of trail)
T300	Levee Trail	Mowed	10054511	0.75	From South of Wildlife Drive (Rte 011) to end of trail
T301	Cottonwood Trail	Mowed	N/A	0.19	From East of Wildlife Drive (Rte 011) to end of trail

TRAIL CONDITION



Trail Name: Levee Trail

Refuge Name: Holla Bend NWR

Trail Number: T300

Region: 4

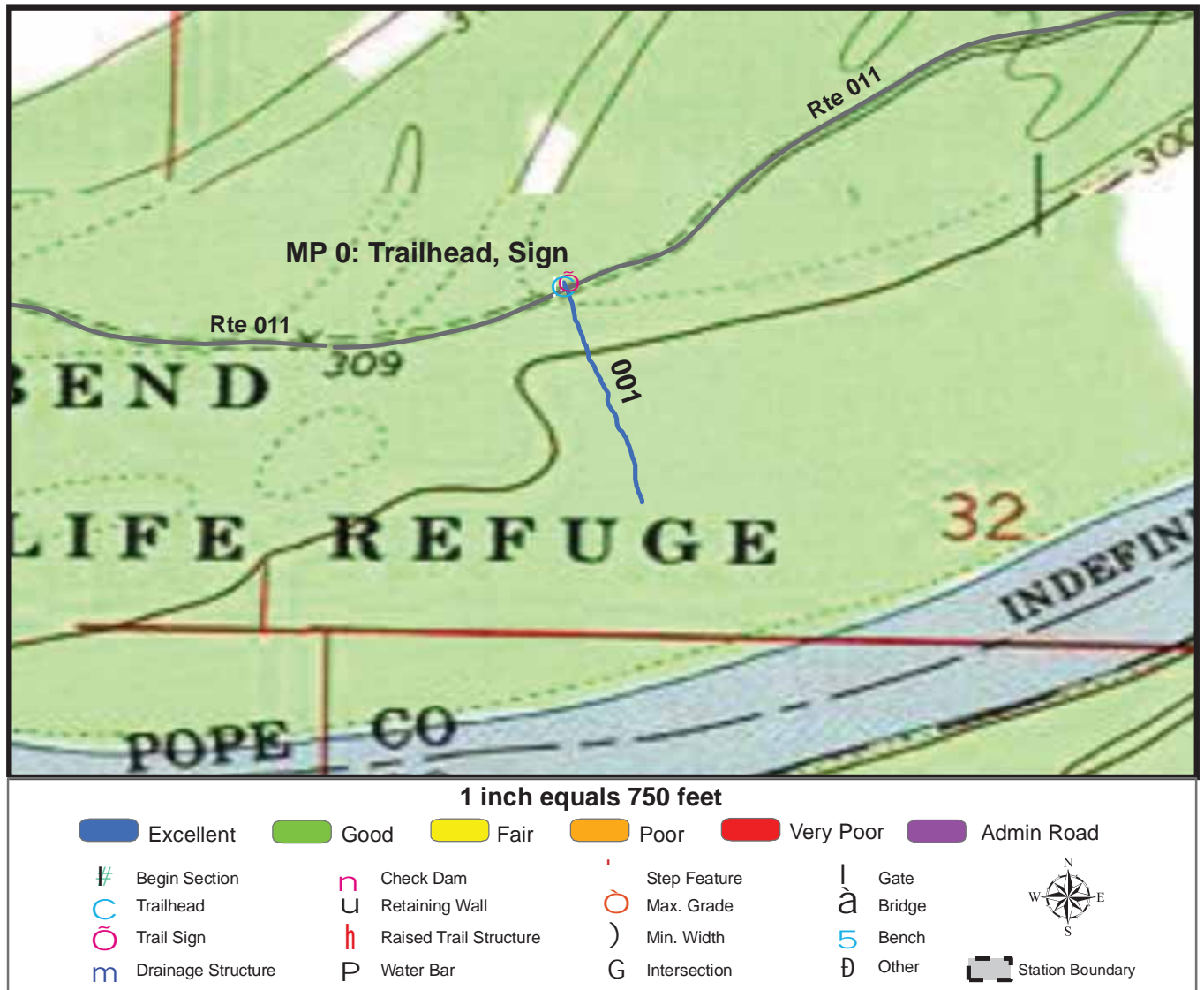
TOTAL LENGTH: 0.75 Miles

Section Number	001				
Section Length (miles)	0.75				
SAMMS Number	10054511				
Rating Date	5/5/2006				
Trail Section Information					
Trail Class	TC3				
Surface Type	Mowed				
Surface Firmness	Soft				
Width (inches)	110				
Average Grade (%)	4.8				
Average X-slope (%)	4.7				
Trail Condition Information					
Deferred Maintenance	\$0				
CRV	\$27183				
FCI	0				
Condition	Excellent				

Trail Condition TOTALS

Deferred Maintenance	CRV	FCI	Condition
\$0	\$27183	0	Excellent

TRAIL CONDITION



Trail Name: Cottonwood Trail

Refuge Name: Holla Bend NWR

Trail Number: T301

Region: 4

TOTAL LENGTH: 0.19 Miles

Section Number	001				
Section Length (miles)	0.19				
SAMMS Number	N/A				
Rating Date	5/5/2006				
Trail Section Information					
Trail Class	TC3				
Surface Type	Mowed				
Surface Firmness	Firm				
Width (inches)	120				
Average Grade (%)	1.6				
Average X-slope (%)	2.4				
Trail Condition Information					
Deferred Maintenance	\$0				
CRV	\$7726				
FCI	0				
Condition	Excellent				

Trail Condition TOTALS

Deferred Maintenance	CRV	FCI	Condition
\$0	\$7726	0	Excellent

PHOTOGRAPHIC SHEET

TRAIL NUMBER: **T300**

STATION: Holla Bend NWR

DATE: 5/5/2006



Photo # 2 - MP 0.0 - Trailhead

TRAIL NUMBER: **T300**

STATION: Holla Bend NWR

DATE: 5/5/2006



Photo # 1 - MP 0.0 - Sign

PHOTOGRAPHIC SHEET

TRAIL NUMBER: **T300**

STATION: Holla Bend NWR

DATE: 5/5/2006



Photo # 4 - MP 0.0 - Sign

TRAIL NUMBER: **T300**

STATION: Holla Bend NWR

DATE: 5/5/2006



Photo # 3 - MP 0.01 - Sign

PHOTOGRAPHIC SHEET

TRAIL NUMBER: T301

STATION: Holla Bend NWR

DATE: 5/5/2006



Photo # 5 - MP 0.0 - Trailhead

TRAIL NUMBER: T301

STATION: Holla Bend NWR

DATE: 5/5/2006

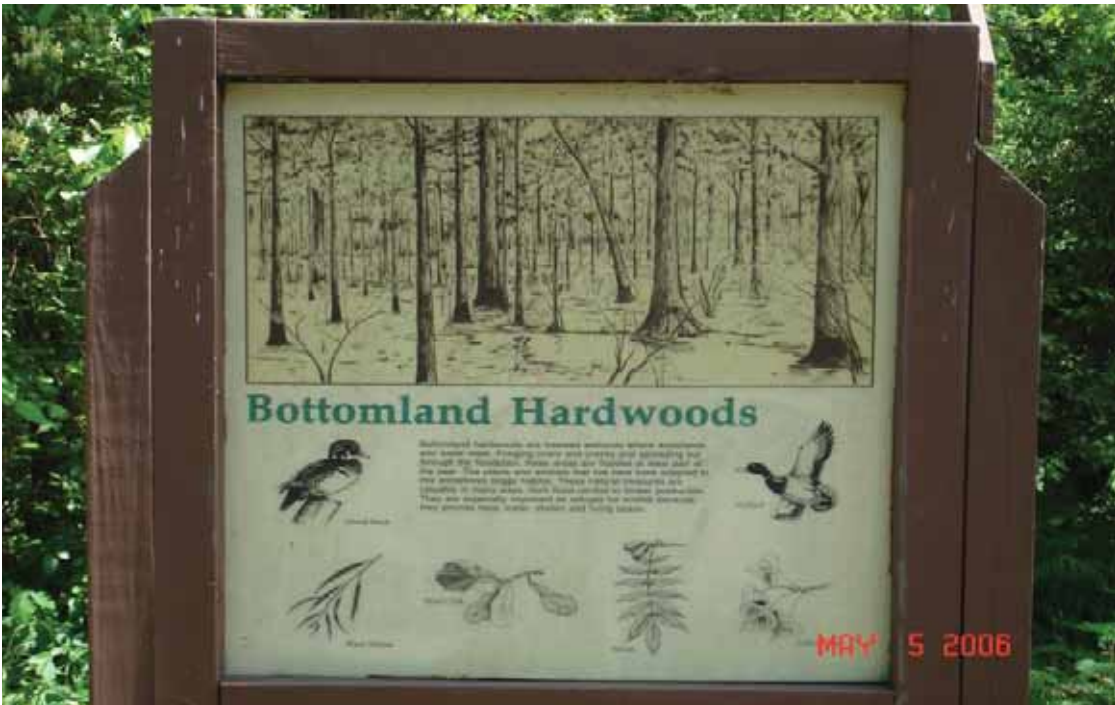


Photo # 6 - MP 0.0 - Sign

The Trail Inventory of Norfolk National Fish Hatchery Mountain Home, Arkansas



**Prepared By:
Federal Highway Administration
Central Federal Lands Highway Division
May 2006**



Norfolk NWR

Trail and Trail Feature Summaries

Trail Miles and Percentages by Surface Type and Condition

Trail Surface Type	Mileage by Trail Condition												Total Miles
	Excellent		Good		Fair		Poor		Very Poor		Not Rated*		
	MILES	%	MILES	%	MILES	%	MILES	%	MILES	%	MILES	%	
Native		0%		0%		0%		0%		0%		0%	0.00
Gravel		0%		0%		0%		0%		0%		0%	0.00
Asphalt		0%		0%		0%		0%		0%		0%	0.00
Concrete	0.18	75%		0%		0%		0%		0%		0%	0.18
Turnpike		0%		0%		0%		0%		0%		0%	0.00
Boardwalk	0.06	25%		0%		0%		0%		0%		0%	0.06
Puncheon		0%		0%		0%		0%		0%		0%	0.00
Woodchips		0%		0%		0%		0%		0%		0%	0.00
Mowed		0%		0%		0%		0%		0%		0%	0.00
Admin Road		0%		0%		0%		0%		0%		0%	0.00
Other		0%		0%		0%		0%		0%		0%	0.00
Totals	0.24	100%	0.00	0%	0.00	0%	0.00	0%	0.00	0%	0.00	0%	0.24

Trail Miles and Percentages by Trail Classification and Condition

Trail Classification	Mileage by Trail Condition												Total Miles
	Excellent		Good		Fair		Poor		Very Poor		Not Rated*		
	MILES	%	MILES	%	MILES	%	MILES	%	MILES	%	MILES	%	
TC1		0%		0%		0%		0%		0%		0%	0.00
TC2		0%		0%		0%		0%		0%		0%	0.00
TC3		0%		0%		0%		0%		0%		0%	0.00
TC4	0.15	63%		0%		0%		0%		0%		0%	0.15
TC5	0.09	38%		0%		0%		0%		0%		0%	0.09
Totals	0.24	100%	0.00	0%	0.00	0%	0.00	0%	0.00	0%	0.00	0%	0.24

* Admin Roads are included in the inventory but are not rated for condition.

Trail Features

Trail Number	Feature Type	Quantity	Grouped Feature	Milepost	Photo
T400	Step: Log -each	17	No	0.01	N/A
T400	Bench	1	No	0.01	N/A
T400	Step: Log -each	24	No	0.07	N/A
T400	Crib: Log -cf	320	No	0.11	N/A
T400	Bench	1	No	0.13	N/A
T400	Bench	1	No	0.14	N/A
T400	Bench	1	No	0.15	N/A
T500	Sign	1	No	0.01	2
T500	Sign	1	No	0.02	3
T500	Bench	1	No	0.06	N/A
T500	Bench	1	No	0.09	N/A
sf-square feet lf-linear feet cf-cubic feet					

This topographic map depicts the Norfolk Lake region, characterized by green contour lines indicating elevation. Key features include Norfolk Lake at the top, the Norfolk River flowing through the center, and the Norfolk Dam. Handwritten annotations in black ink mark specific points of interest: 'T400' and 'T500' are located near the Norfolk Dam, with 'Rte 010' and 'Rte 900' also indicated nearby. The map includes various geographical labels such as 'Norfolk Lake', 'Norfolk River', 'Norfolk Dam', and 'Norfolk Lake Normal Pool Elevation 546'. Contour lines are labeled with numbers like 34, 35, 10, 11, 14, 15, and 16. Other features include 'Quarry Landing', 'Public Use Area', 'Picket Area', 'Norfolk Dam', and 'Norfolk Lake Normal Pool Elevation 546'.

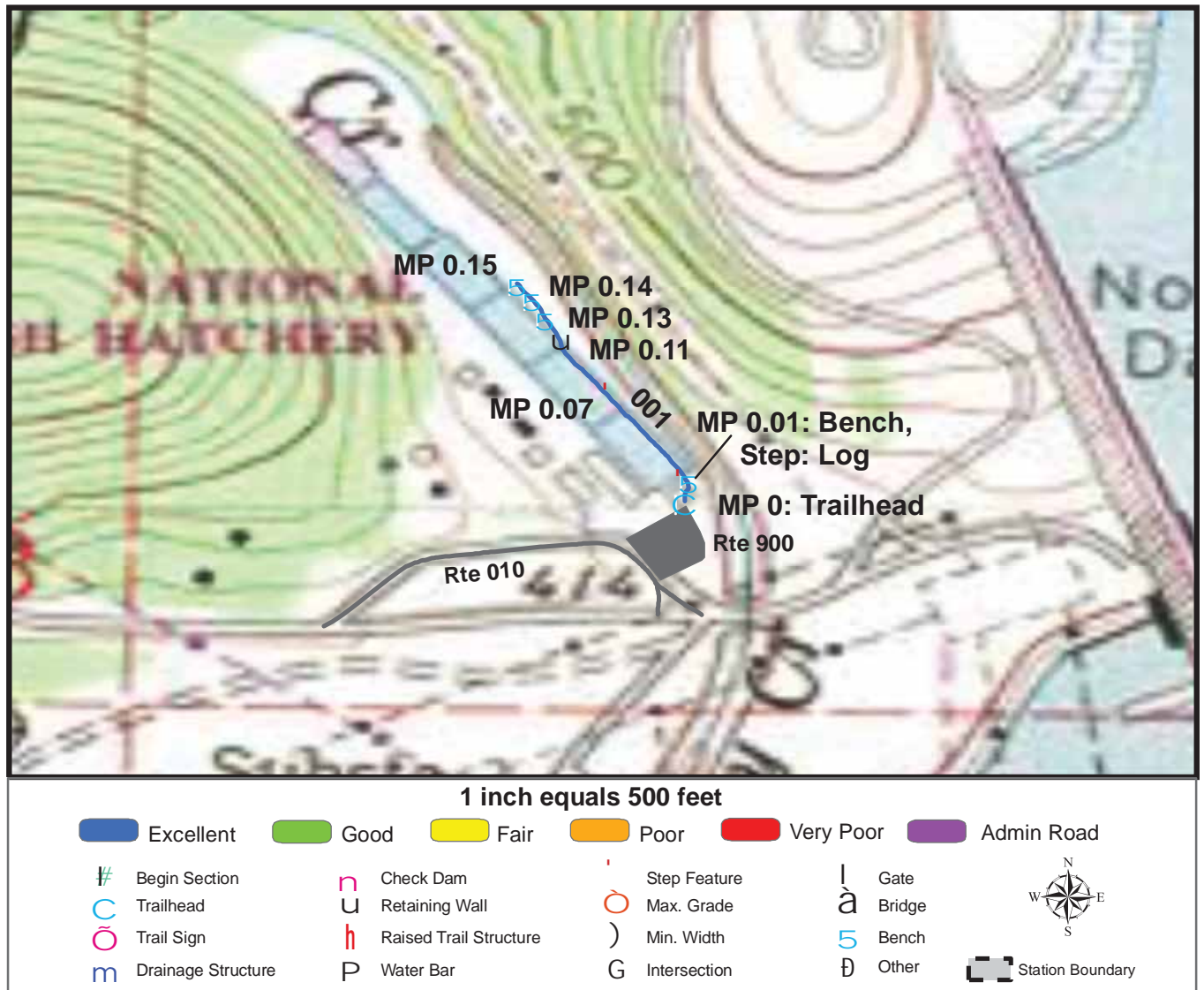
TRAILS ID

Station Name: Norfolk NFH

Org. Code: 43280

Trail #	Trail Name	Surface Type	SAMMS	Trail Mileage	Trail Description (Begin and End point of trail)
T400	Dry Run Creek Trail	Concrete	N/A	0.15	From Visitor Center Parking Area (Rte 900) to end of trail
T500	Dry Run Creek Boardwalk	Concrete, Boardwalk	10017358	0.09	From Visitor Center Parking Area (Rte 900) to end of trail

TRAIL CONDITION



Trail Name: Dry Run Creek Trail

Refuge Name: Norfolk NFH

Trail Number: T400

Region: 4

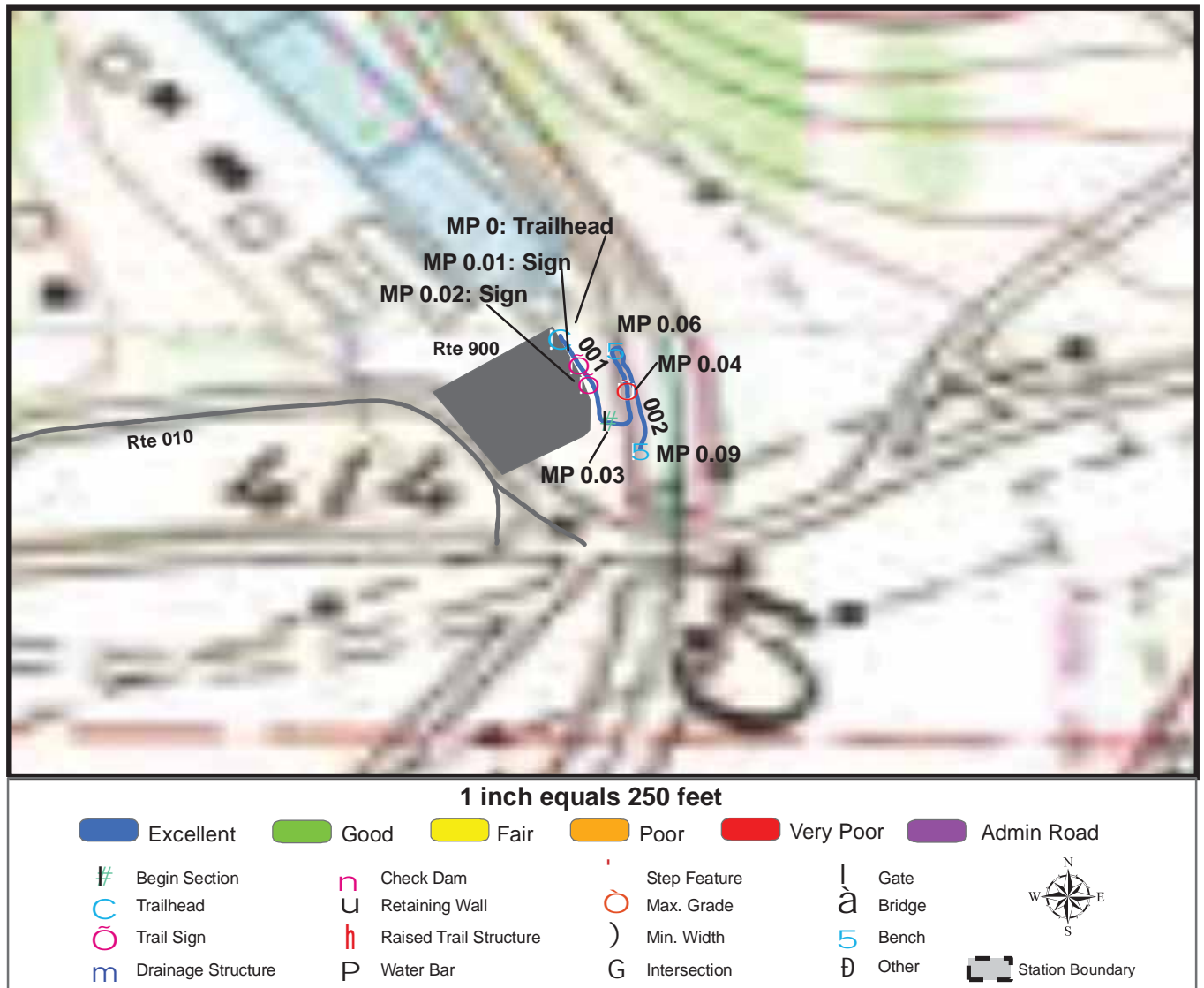
TOTAL LENGTH: 0.15 Miles

Section Number	001				
Section Length (miles)	0.15				
SAMMS Number	N/A				
Rating Date	5/4/2006				
Trail Section Information					
Trail Class	TC4				
Surface Type	Concrete				
Surface Firmness	Paved				
Width (inches)	45				
Average Grade (%)	2.7				
Average X-slope (%)	1				
Trail Condition Information					
Deferred Maintenance	\$0				
CRV	\$138173				
FCI	0				
Condition	Excellent				

Trail Condition TOTALS

Deferred Maintenance	CRV	FCI	Condition
\$0	\$138173	0	Excellent

TRAIL CONDITION



Trail Name: Dry Run Creek Boardwalk

Refuge Name: Norfolk NFH

Trail Number: T500

Region: 4

TOTAL LENGTH: 0.09 Miles

Section Number	001	002			
Section Length (miles)	0.03	0.06			
SAMMS Number	10017358	10017358			
Rating Date	5/4/2006	5/4/2006			
Trail Section Information					
Trail Class	TC5	TC5			
Surface Type	Concrete	Boardwalk			
Surface Firmness	Paved	Hard			
Width (inches)	71	71			
Average Grade (%)	5.3	5.3			
Average X-slope (%)	1.5	1.5			
Trail Condition Information					
Deferred Maintenance	\$0	\$0			
CRV	\$4066	\$28654			
FCI	0	0			
Condition	Excellent	Excellent			

Trail Condition TOTALS

Deferred Maintenance	CRV	FCI	Condition
\$0	\$32720	0	Excellent

PHOTOGRAPHIC SHEET

TRAIL NUMBER: **T400**

STATION: Norfolk NFH

DATE: 5/4/2006



Photo # 7 - MP 0.0 - Trailhead

TRAIL NUMBER: **T500**

STATION: Norfolk NFH

DATE: 5/4/2006



Photo # 1 - MP 0.0 - Trailhead

PHOTOGRAPHIC SHEET

TRAIL NUMBER: **T500**

STATION: Norfolk NFH

DATE: 5/4/2006



Photo # 2 - MP 0.01 - Sign

TRAIL NUMBER: **T500**

STATION: Norfolk NFH

DATE: 5/4/2006



Photo # 3 - MP 0.02 - Sign

PHOTOGRAPHIC SHEET

TRAIL NUMBER: T500

STATION: Norfolk NFH

DATE: 12/20/2006



Photo # 6 - MP 0.03 - Begin Section 002

The Trail Inventory of Pond Creek National Wildlife Refuge Lockesburg, Arkansas



Prepared By:
Federal Highway Administration
Central Federal Lands Highway Division
June 2006



Pond Creek NWR

Trail and Trail Feature Summaries

Trail Miles and Percentages by Surface Type and Condition

Trail Surface Type	Mileage by Trail Condition												Total Miles
	Excellent		Good		Fair		Poor		Very Poor		Not Rated*		
	MILES	%	MILES	%	MILES	%	MILES	%	MILES	%	MILES	%	
Native	3.13	82%	0.68	18%		0%		0%		0%		0%	3.81
Gravel		0%		0%		0%		0%		0%		0%	0.00
Asphalt		0%		0%		0%		0%		0%		0%	0.00
Concrete		0%		0%		0%		0%		0%		0%	0.00
Turnpike		0%		0%		0%		0%		0%		0%	0.00
Boardwalk		0%		0%		0%		0%		0%		0%	0.00
Puncheon		0%		0%		0%		0%		0%		0%	0.00
Woodchips		0%		0%		0%		0%		0%		0%	0.00
Mowed		0%		0%		0%		0%		0%		0%	0.00
Admin Road		0%		0%		0%		0%		0%		0%	0.00
Other		0%		0%		0%		0%		0%		0%	0.00
Totals	3.13	82%	0.68	18%	0.00	0%	0.00	0%	0.00	0%	0.00	0%	3.81

Trail Miles and Percentages by Trail Classification and Condition

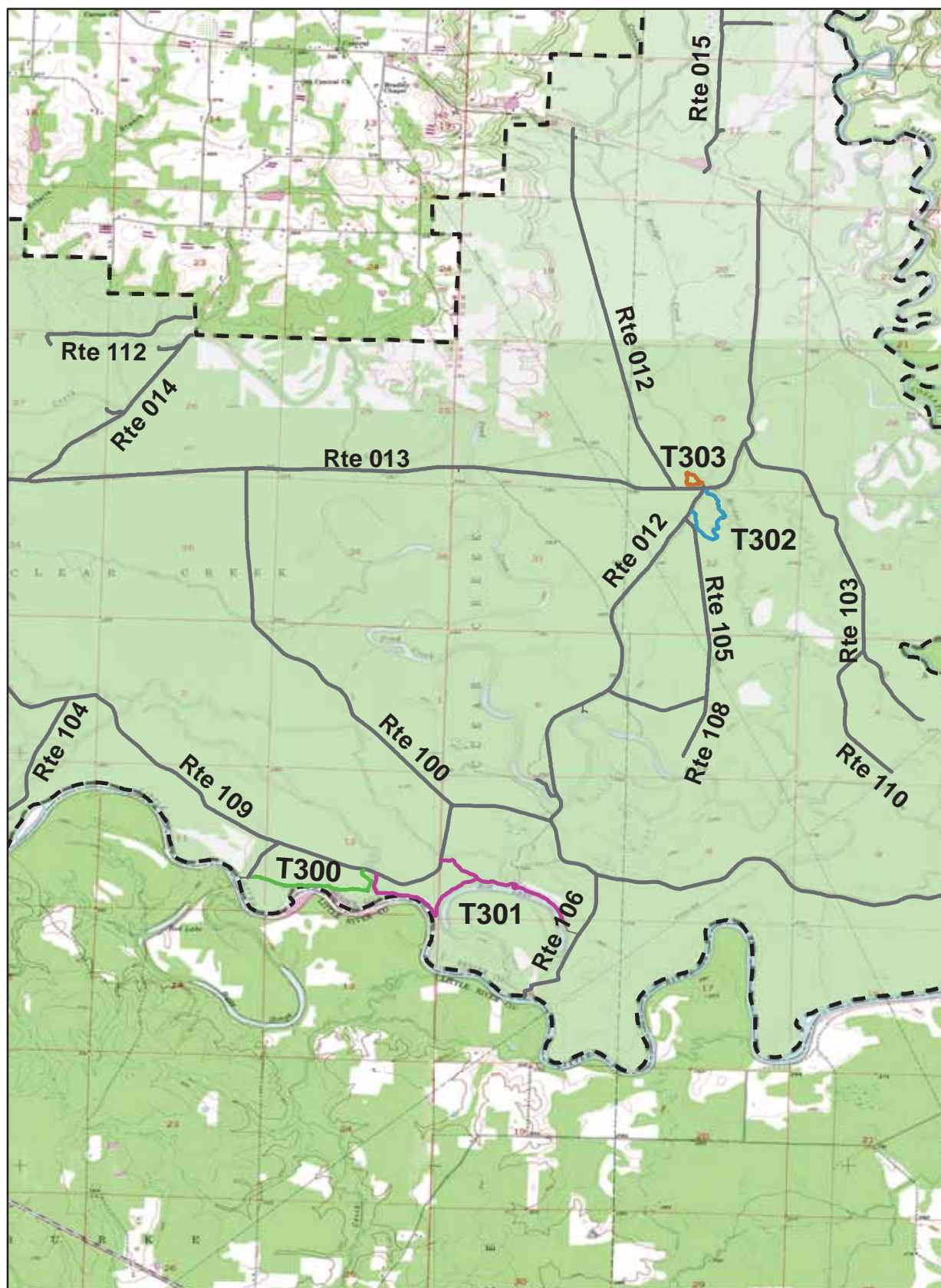
Trail Classification	Mileage by Trail Condition												Total Miles
	Excellent		Good		Fair		Poor		Very Poor		Not Rated*		
	MILES	%	MILES	%	MILES	%	MILES	%	MILES	%	MILES	%	
TC1		0%		0%		0%		0%		0%		0%	0.00
TC2		0%		0%		0%		0%		0%		0%	0.00
TC3	3.13	82%	0.68	18%		0%		0%		0%		0%	3.81
TC4		0%		0%		0%		0%		0%		0%	0.00
TC5		0%		0%		0%		0%		0%		0%	0.00
Totals	3.13	82%	0.68	18%	0.00	0%	0.00	0%	0.00	0%	0.00	0%	3.81

* Admin Roads are included in the inventory but are not rated for condition.

Trail Features

Trail Number	Feature Type	Quantity	Grouped Feature	Milepost	Photo
T300	Sign	4	Yes	N/A	1
T300	Sign	9	Yes	N/A	3
T301	Sign	3	Yes	N/A	4
T301	Sign	33	Yes	N/A	6
T302	Sign	1	No	0.00	9
T302	Sign	16	Yes	N/A	11
T302	Sign	1	No	0.22	6
T302	Sign	1	No	0.40	12
T303	Sign	1	No	0.00	14
T303	Sign	12	Yes	N/A	15
<div> <div>sf-square feet</div> <div>lf-linear feet</div> <div>cf-cubic feet</div> </div>					

POND CREEK NATIONAL WILDLIFE REFUGE TRAIL LOCATION MAP



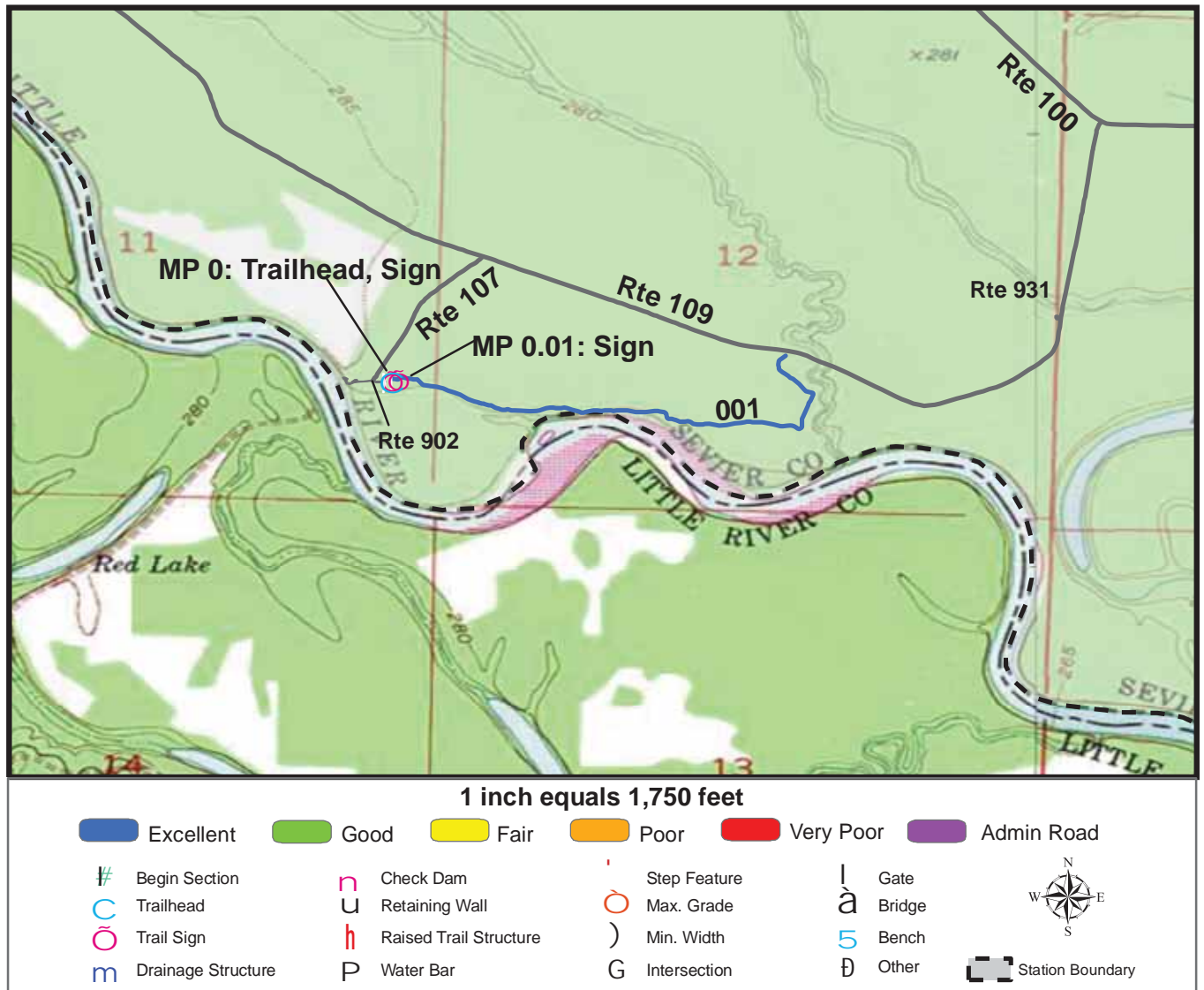
TRAILS ID

Station Name: Pond Creek NWR

Org. Code: 43575

Trail #	Trail Name	Surface Type	SAMMS	Trail Mileage	Trail Description (Begin and End point of trail)
T300	Little River Trail	Native	N/A	0.88	From Gillahand Shoals Campground Parking (Rte 902) to Gillahan Road (Rte 109)
T301	Red Lake Trail	Native	10044062	1.89	From Gillahan Road (Rte 109) to Red Lake Campground Parking (Rte 901)
T302	Bridge Creek South Trail	Native	10044063	0.73	From Nobels Mound Road (Rte 012) to Nobels Mound Road (Rte 012)
T303	Bridge Creek North Trail	Native	10044063	0.31	From Nobels/Tram ATV Parking (Rte 910) to end of trail loop

TRAIL CONDITION



Trail Name: Little River Trail

Refuge Name: Pond Creek NWR

Trail Number: T300

Region: 4

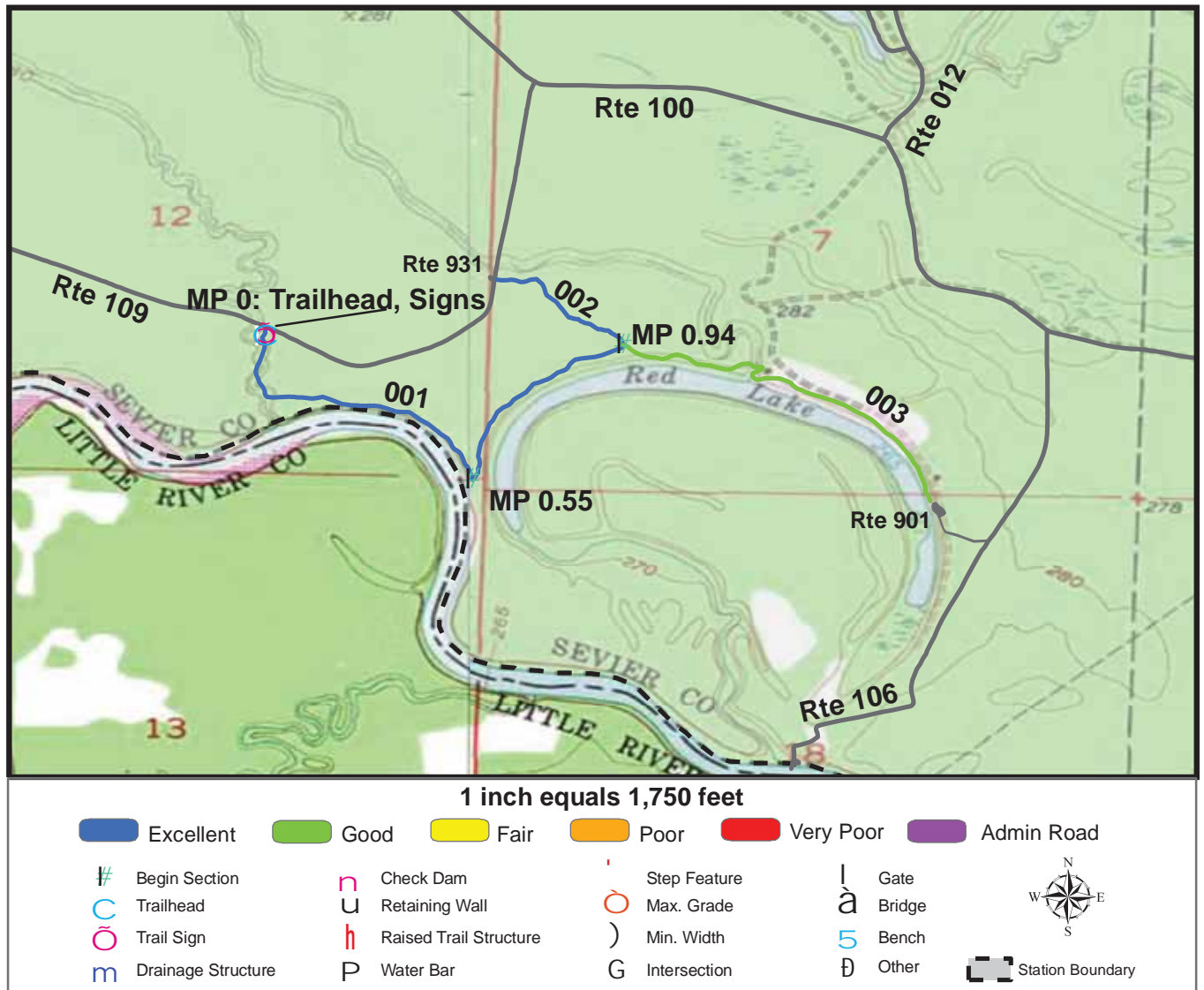
TOTAL LENGTH: 0.88 Miles

Section Number	001				
Section Length (miles)	0.88				
SAMMS Number	N/A				
Rating Date	6/6/2006				
Trail Section Information					
Trail Class	TC3				
Surface Type	Native				
Surface Firmness	Firm				
Width (inches)	120				
Average Grade (%)	1				
Average X-slope (%)	2.1				
Trail Condition Information					
Deferred Maintenance	\$0				
CRV	\$139980				
FCI	0				
Condition	Excellent				

Trail Condition TOTALS

Deferred Maintenance	CRV	FCI	Condition
\$0	\$139980	0	Excellent

TRAIL CONDITION



Trail Name: Red Lake Trail

Refuge Name: Pond Creek NWR

Trail Number: T301

Region: 4

TOTAL LENGTH: 1.89 Miles

Section Number	001	002	003		
Section Length (miles)	0.55	0.66	0.68		
SAMMS Number	10044062	10044062	10044062		
Rating Date	6/6/2006	6/6/2006	6/6/2006		
Trail Section Information					
Trail Class	TC3	TC3	TC3		
Surface Type	Native	Native	Native		
Surface Firmness	Firm	Firm	Firm		
Width (inches)	120	120	120		
Average Grade (%)	1.5	1.5	1.5		
Average X-slope (%)	2.4	2.4	2.4		
Trail Condition Information					
Deferred Maintenance	\$0	\$0	\$3922		
CRV	\$86749	\$105643	\$108653		
FCI	0	0	0.036		
Condition	Excellent	Excellent	Good		

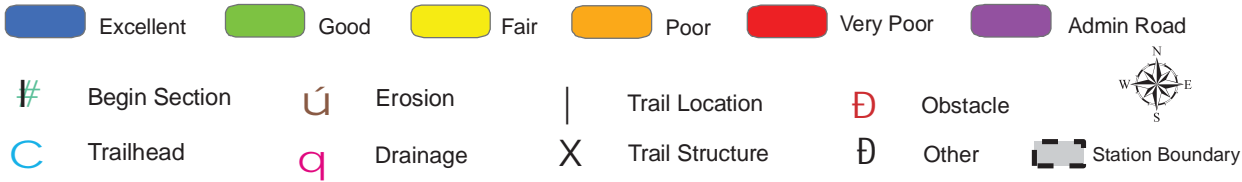
Trail Condition TOTALS

Deferred Maintenance	CRV	FCI	Condition
\$3922	\$301045	0.013	Good

TRAIL DEFICIENCY



1 inch equals 1,000 feet



Trail Name: Red Lake Trail

Refuge Name: Pond Creek NWR

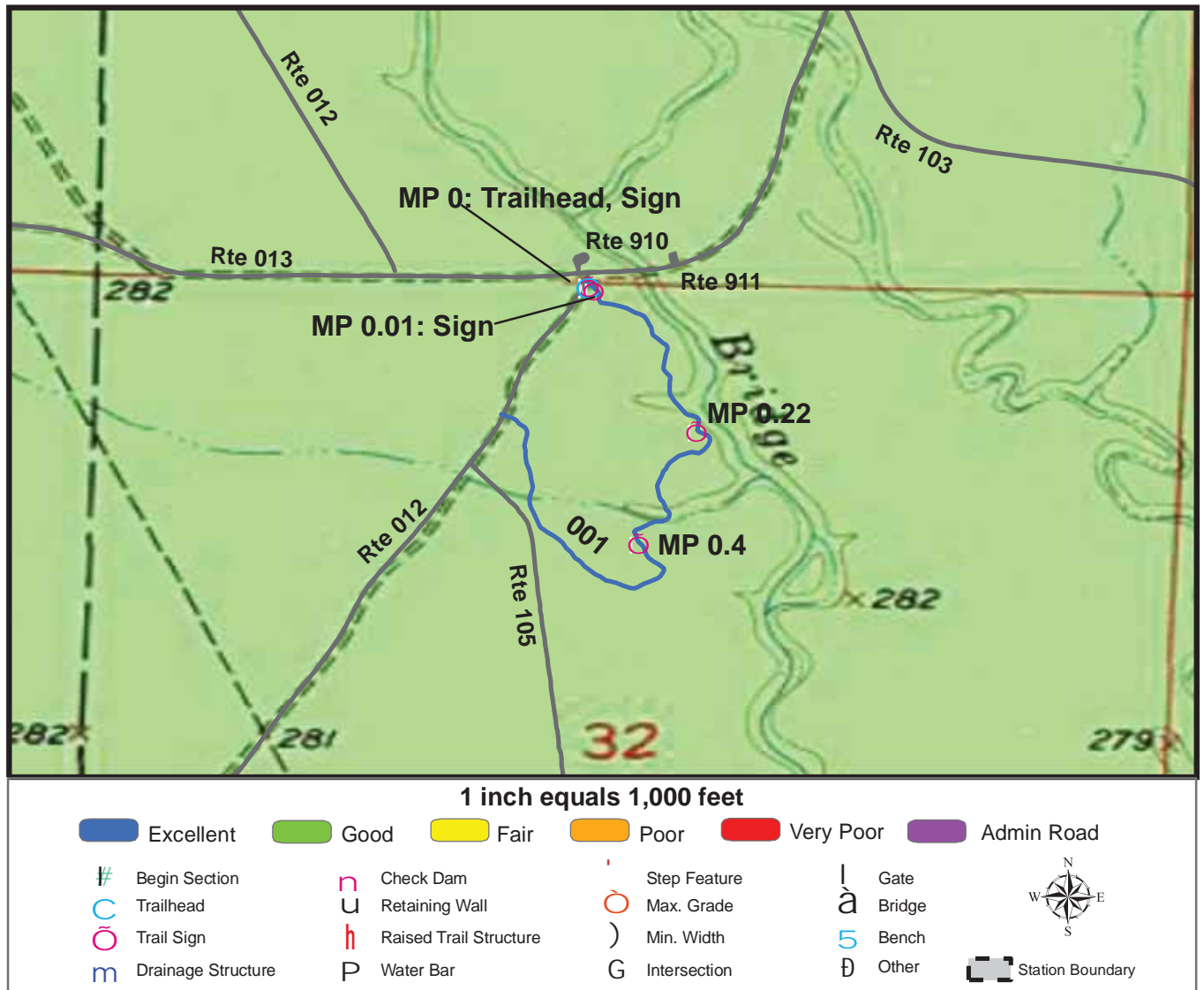
Trail Number: T301

Region: 4

TOTAL LENGTH: 1.89 Miles

Mile Post	1.18			
Section Number	003			
Photo Number	8			
Deficiency	Drainage			
Action	Build/Add			
Item	Bridge -sf			
Quantity	100			
Deferred Maintenance	\$3922			

TRAIL CONDITION



Trail Name: Bridge Creek South Trail

Refuge Name: Pond Creek NWR

Trail Number: T302

Region: 4

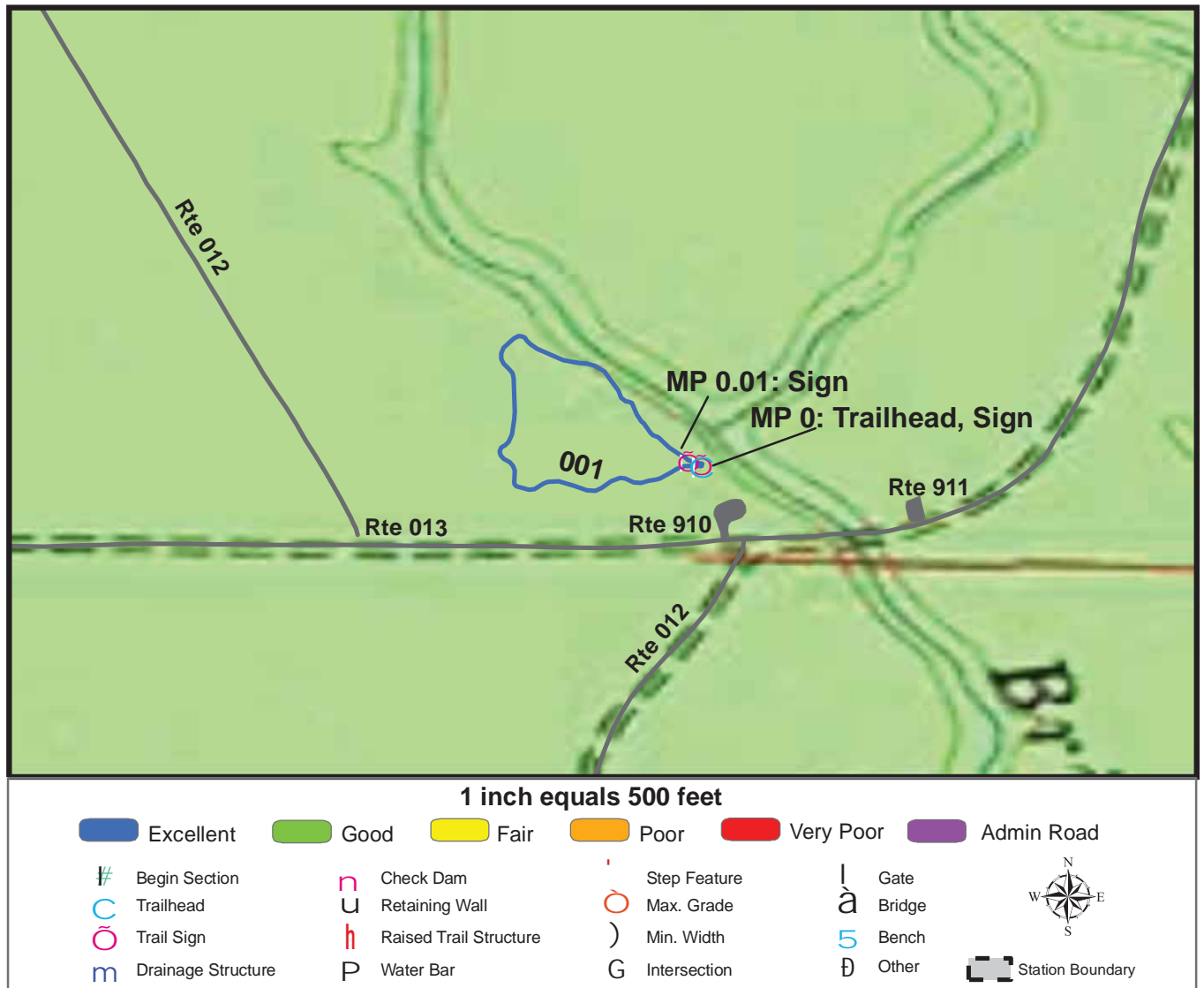
TOTAL LENGTH: 0.73 Miles

Section Number	001				
Section Length (miles)	0.73				
SAMMS Number	10044063				
Rating Date	6/6/2006				
Trail Section Information					
Trail Class	TC3				
Surface Type	Native				
Surface Firmness	Firm				
Width (inches)	120				
Average Grade (%)	1.1				
Average X-slope (%)	2				
Trail Condition Information					
Deferred Maintenance	\$0				
CRV	\$116619				
FCI	0				
Condition	Excellent				

Trail Condition TOTALS

Deferred Maintenance	CRV	FCI	Condition
\$0	\$116619	0	Excellent

TRAIL CONDITION



Trail Name: Bridge Creek North Trail

Refuge Name: Pond Creek NWR

Trail Number: T303

Region: 4

TOTAL LENGTH: 0.31 Miles

Section Number	001				
Section Length (miles)	0.31				
SAMMS Number	10044063				
Rating Date	6/6/2006				
Trail Section Information					
Trail Class	TC3				
Surface Type	Native				
Surface Firmness	Firm				
Width (inches)	120				
Average Grade (%)	3.8				
Average X-slope (%)	4.9				
Trail Condition Information					
Deferred Maintenance	\$0				
CRV	\$48515				
FCI	0				
Condition	Excellent				

Trail Condition TOTALS

Deferred Maintenance	CRV	FCI	Condition
\$0	\$48515	0	Excellent

PHOTOGRAPHIC SHEET

TRAIL NUMBER: **T300**

STATION: Pond Creek NWR

DATE: 6/6/2006



Photo # 2 - MP 0.0 - Trailhead

TRAIL NUMBER: **T300**

STATION: Pond Creek NWR

DATE: 6/6/2006



Photo # 1 - MP 0.0 - Sign (Grouped Feature)

PHOTOGRAPHIC SHEET

TRAIL NUMBER: **T300**

STATION: Pond Creek NWR

DATE: 6/6/2006



Photo # 3 - MP 0.01 - Sign (Grouped Feature)

TRAIL NUMBER: **T301**

STATION: Pond Creek NWR

DATE: 6/6/2006



Photo # 5 - MP 0.0 - Trailhead

PHOTOGRAPHIC SHEET

TRAIL NUMBER: **T301**

STATION: Pond Creek NWR

DATE: 6/6/2006



Photo # 4 - MP 0.0 - Sign (Grouped Feature)

TRAIL NUMBER: **T301**

STATION: Pond Creek NWR

DATE: 6/6/2006



Photo # 6 - MP 0.0 - Sign (Grouped Feature)

PHOTOGRAPHIC SHEET

TRAIL NUMBER: **T301**

STATION: Pond Creek NWR

DATE: 6/6/2006



Photo # 8 - MP 1.18 - Drainage Deficiency

TRAIL NUMBER: **T302**

STATION: Pond Creek NWR

DATE: 6/6/2006



Photo # 10 - MP 0.0 - Trailhead

PHOTOGRAPHIC SHEET

TRAIL NUMBER: **T302**

STATION: Pond Creek NWR

DATE: 6/6/2006



Photo # 9 - MP 0.0 - Sign

TRAIL NUMBER: **T302**

STATION: Pond Creek NWR

DATE: 6/6/2006



Photo # 11 - MP 0.01 - Sign (Grouped Feature)

PHOTOGRAPHIC SHEET

TRAIL NUMBER: **T302**

STATION: Pond Creek NWR

DATE: 6/6/2006



Photo # 6 - MP 0.22 - Sign

TRAIL NUMBER: **T302**

STATION: Pond Creek NWR

DATE: 6/6/2006



Photo # 12 - MP 0.4 - Sign

PHOTOGRAPHIC SHEET

TRAIL NUMBER: **T303**

STATION: Pond Creek NWR

DATE: 6/6/2006



Photo # 13 - MP 0.0 - Trailhead

TRAIL NUMBER: **T303**

STATION: Pond Creek NWR

DATE: 6/6/2006



Photo # 14 - MP 0.0 - Sign

PHOTOGRAPHIC SHEET

TRAIL NUMBER: T303

STATION: Pond Creek NWR

DATE: 6/6/2006



Photo # 15 - MP 0.01 - Sign (Grouped Feature)

The Trail Inventory of White River National Wildlife Refuge St. Charles, Arkansas



**Prepared By:
Federal Highway Administration
Central Federal Lands Highway Division
May 2006**



White River NWR

Trail and Trail Feature Summaries

Trail Miles and Percentages by Surface Type and Condition

Trail Surface Type	Mileage by Trail Condition												Total Miles
	Excellent		Good		Fair		Poor		Very Poor		Not Rated*		
	MILES	%	MILES	%	MILES	%	MILES	%	MILES	%	MILES	%	
Native	0.61	43%		0%		0%		0%		0%		0%	0.61
Gravel		0%		0%		0%		0%		0%		0%	0.00
Asphalt	0.75	53%		0%		0%		0%		0%		0%	0.75
Concrete		0%		0%		0%		0%		0%		0%	0.00
Turnpike		0%		0%		0%		0%		0%		0%	0.00
Boardwalk	0.06	4%		0%		0%		0%		0%		0%	0.06
Puncheon		0%		0%		0%		0%		0%		0%	0.00
Woodchips		0%		0%		0%		0%		0%		0%	0.00
Mowed		0%		0%		0%		0%		0%		0%	0.00
Admin Road		0%		0%		0%		0%		0%		0%	0.00
Other		0%		0%		0%		0%		0%		0%	0.00
Totals	1.42	100%	0.00	0%	0.00	0%	0.00	0%	0.00	0%	0.00	0%	1.42

Trail Miles and Percentages by Trail Classification and Condition

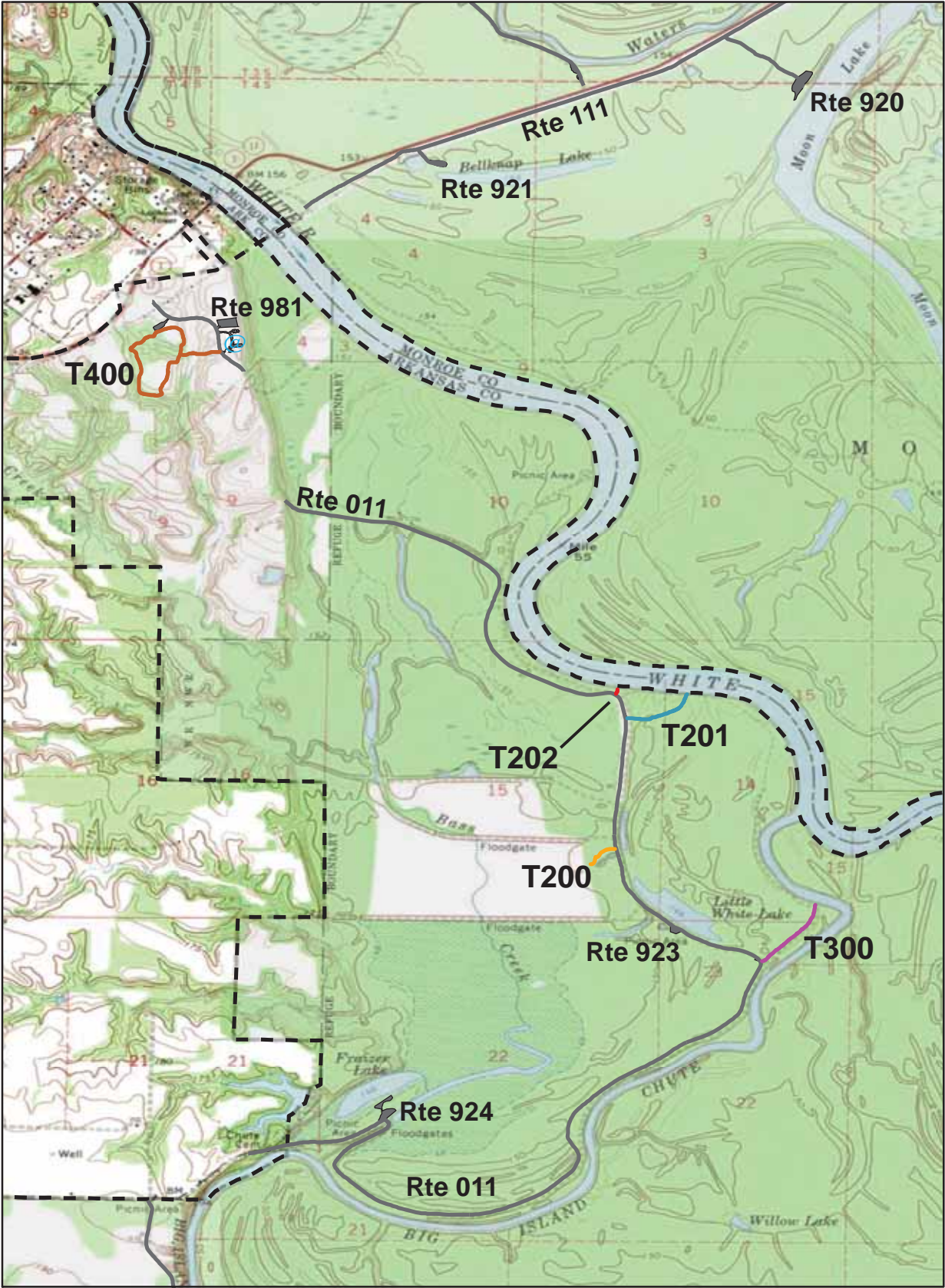
Trail Classification	Mileage by Trail Condition												Total Miles
	Excellent		Good		Fair		Poor		Very Poor		Not Rated*		
	MILES	%	MILES	%	MILES	%	MILES	%	MILES	%	MILES	%	
TC1	0.02	1%		0%		0%		0%		0%		0%	0.02
TC2	0.32	23%		0%		0%		0%		0%		0%	0.32
TC3	0.27	19%		0%		0%		0%		0%		0%	0.27
TC4	0.81	57%		0%		0%		0%		0%		0%	0.81
TC5		0%		0%		0%		0%		0%		0%	0.00
Totals	1.42	100%	0.00	0%	0.00	0%	0.00	0%	0.00	0%	0.00	0%	1.42

* Admin Roads are included in the inventory but are not rated for condition.

Trail Features

Trail Number	Feature Type	Quantity	Grouped Feature	Milepost	Photo
T200	Lookout/Ob Deck	1	No	0.10	N/A
T201	Bridge -sf	378	No	0.04	4
T400	Culvert -lf	11	No	0.03	N/A
T400	Sign	1	No	0.07	9
T400	Bench	1	No	0.11	N/A
T400	Sign	1	No	0.16	10
T400	Sign	1	No	0.31	11
T400	Bench	1	No	0.33	N/A
T400	Sign	1	No	0.43	12
T400	Bench	1	No	0.46	N/A
T400	Sign	1	No	0.60	18
T400	Sign	1	No	0.62	17
sf-square feet lf-linear feet cf-cubic feet					

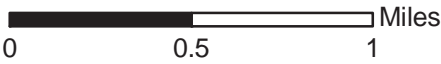
WHITE RIVER NATIONAL WILDLIFE REFUGE TRAIL LOCATION MAP



Station Boundary



HQ/VC



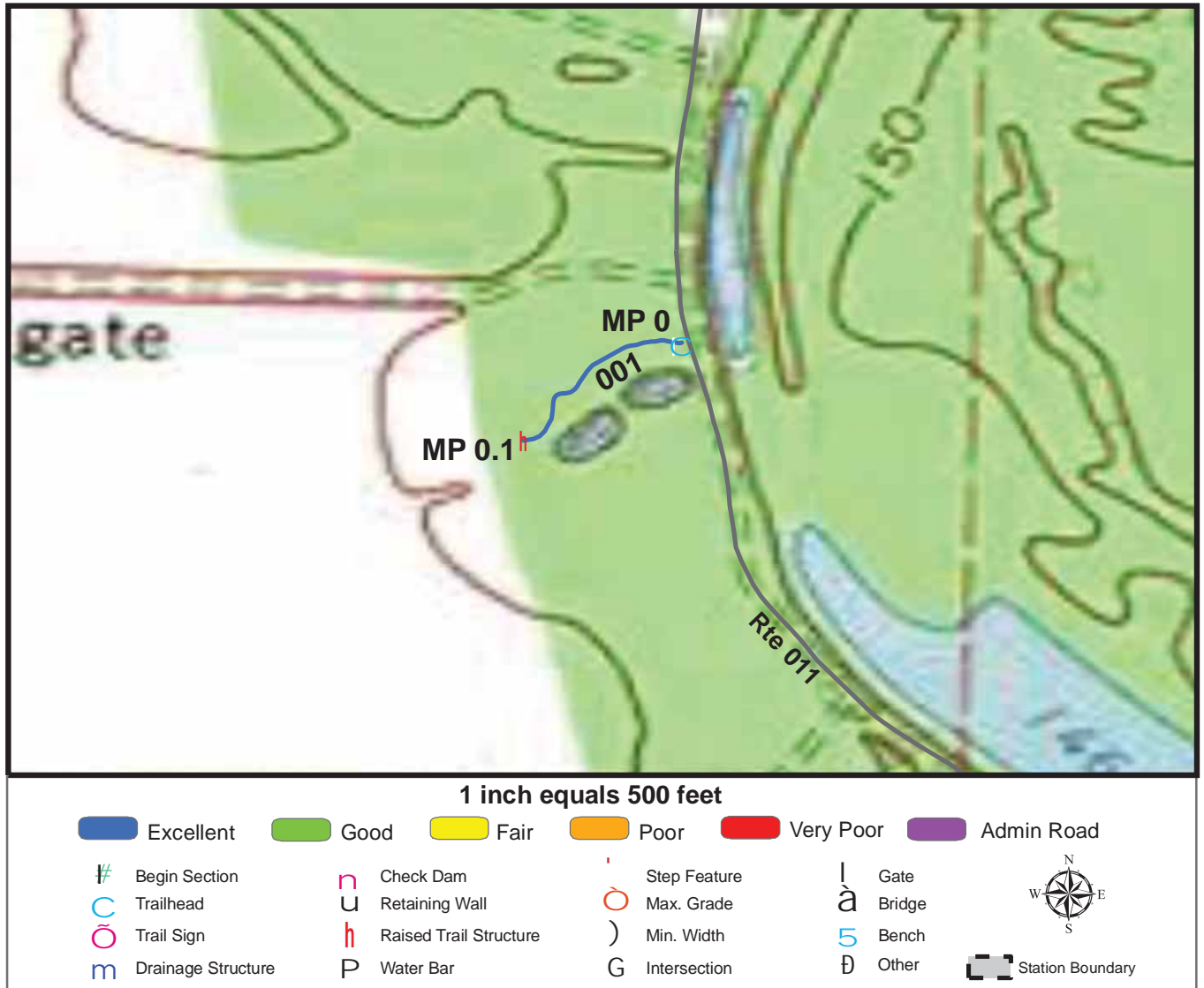
TRAILS ID

Station Name: White River NWR

Org. Code: 43670

Trail #	Trail Name	Surface Type	SAMMS	Trail Mileage	Trail Description (Begin and End point of trail)
T200	Observation Tower Trail	Native	10041997	0.1	From South CC Camp Road (Rte 011) to observation tower
T201	CCC Levee Trail	Native	N/A	0.22	From CCC Levee Trail Parking (Rte 976) to end of trail at river
T202	River Trail	Native	N/A	0.02	From South CC Camp Road (Rte 011) to end of trail at river
T300	Big Island Chute Trail	Native	N/A	0.27	From Big Island Chute Trail Parking (Rte 975) to end of trail at river
T400	Upland Nature Trail	Asphalt, Boardwalk	10040223	0.81	From Upland Nature Trail Parking Lot (Rte 974) to South CC Camp Road (Rte 011)

TRAIL CONDITION



Trail Name: Observation Tower Trail

Refuge Name: White River NWR

Trail Number: T200

Region: 4

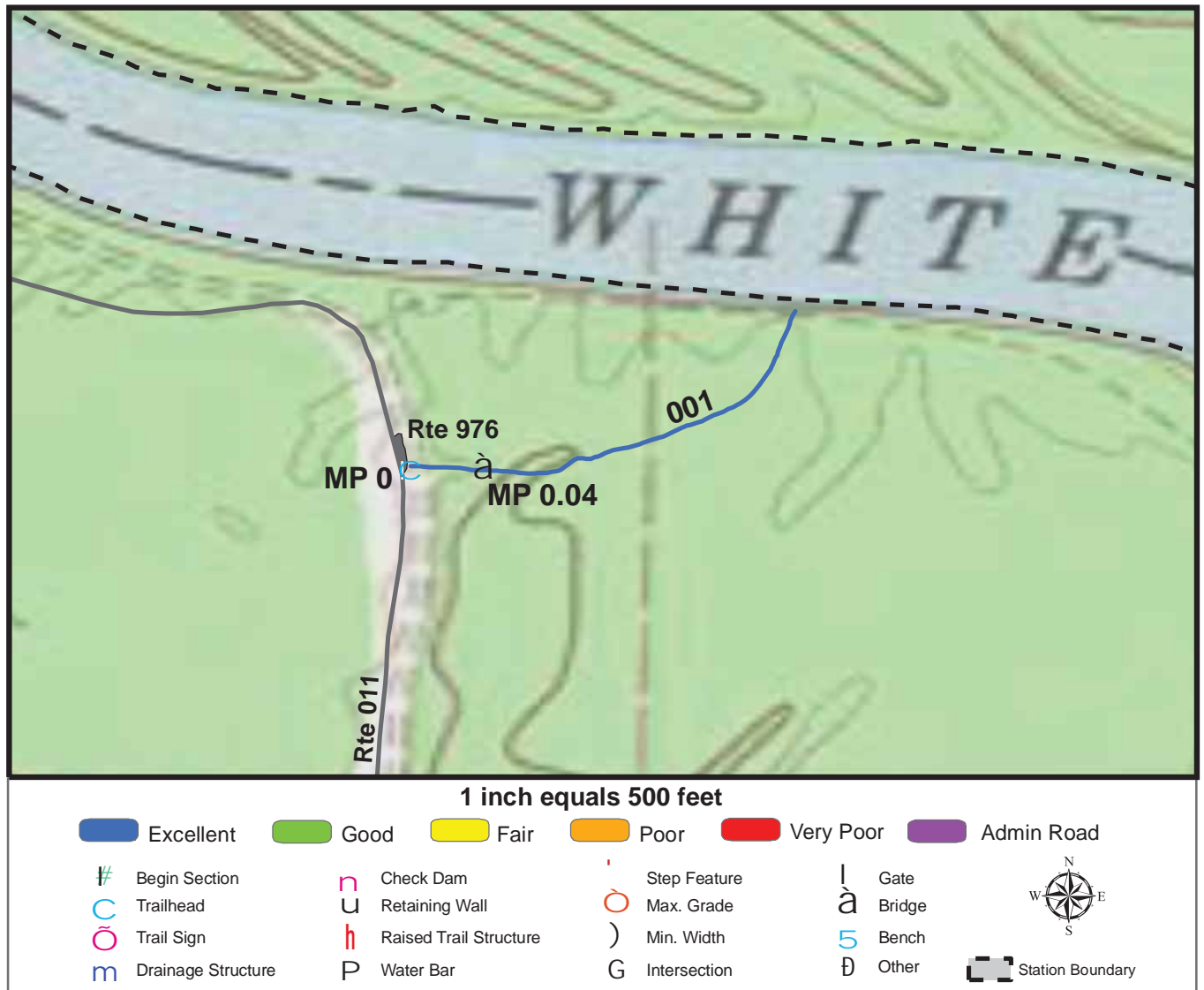
TOTAL LENGTH: 0.1 Miles

Section Number	001				
Section Length (miles)	0.1				
SAMMS Number	10041997				
Rating Date	5/15/2006				
Trail Section Information					
Trail Class	TC2				
Surface Type	Native				
Surface Firmness	Firm				
Width (inches)	24				
Average Grade (%)	2.6				
Average X-slope (%)	3.4				
Trail Condition Information					
Deferred Maintenance	\$0				
CRV	\$4086				
FCI	0				
Condition	Excellent				

Trail Condition TOTALS

Deferred Maintenance	CRV	FCI	Condition
\$0	\$4086	0	Excellent

TRAIL CONDITION



Trail Name: CCC Levee Trail

Refuge Name: White River NWR

Trail Number: T201

Region: 4

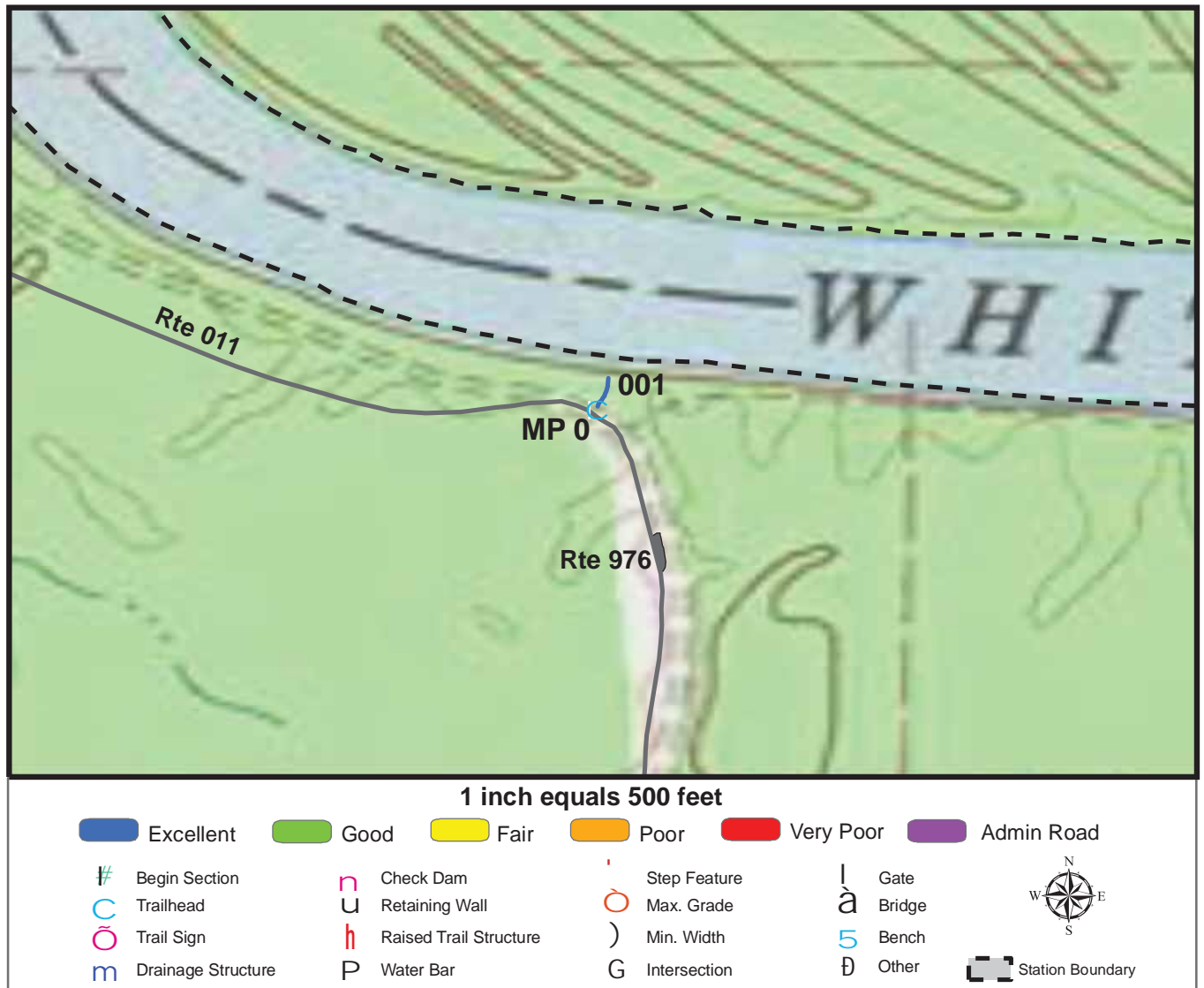
TOTAL LENGTH: 0.22 Miles

Section Number	001				
Section Length (miles)	0.22				
SAMMS Number	N/A				
Rating Date	5/15/2006				
Trail Section Information					
Trail Class	TC2				
Surface Type	Native				
Surface Firmness	Firm				
Width (inches)	120				
Average Grade (%)	2.4				
Average X-slope (%)	1.9				
Trail Condition Information					
Deferred Maintenance	\$0				
CRV	\$62198				
FCI	0				
Condition	Excellent				

Trail Condition TOTALS

Deferred Maintenance	CRV	FCI	Condition
\$0	\$62198	0	Excellent

TRAIL CONDITION



Trail Name: River Trail

Refuge Name: White River NWR

Trail Number: T202

Region: 4

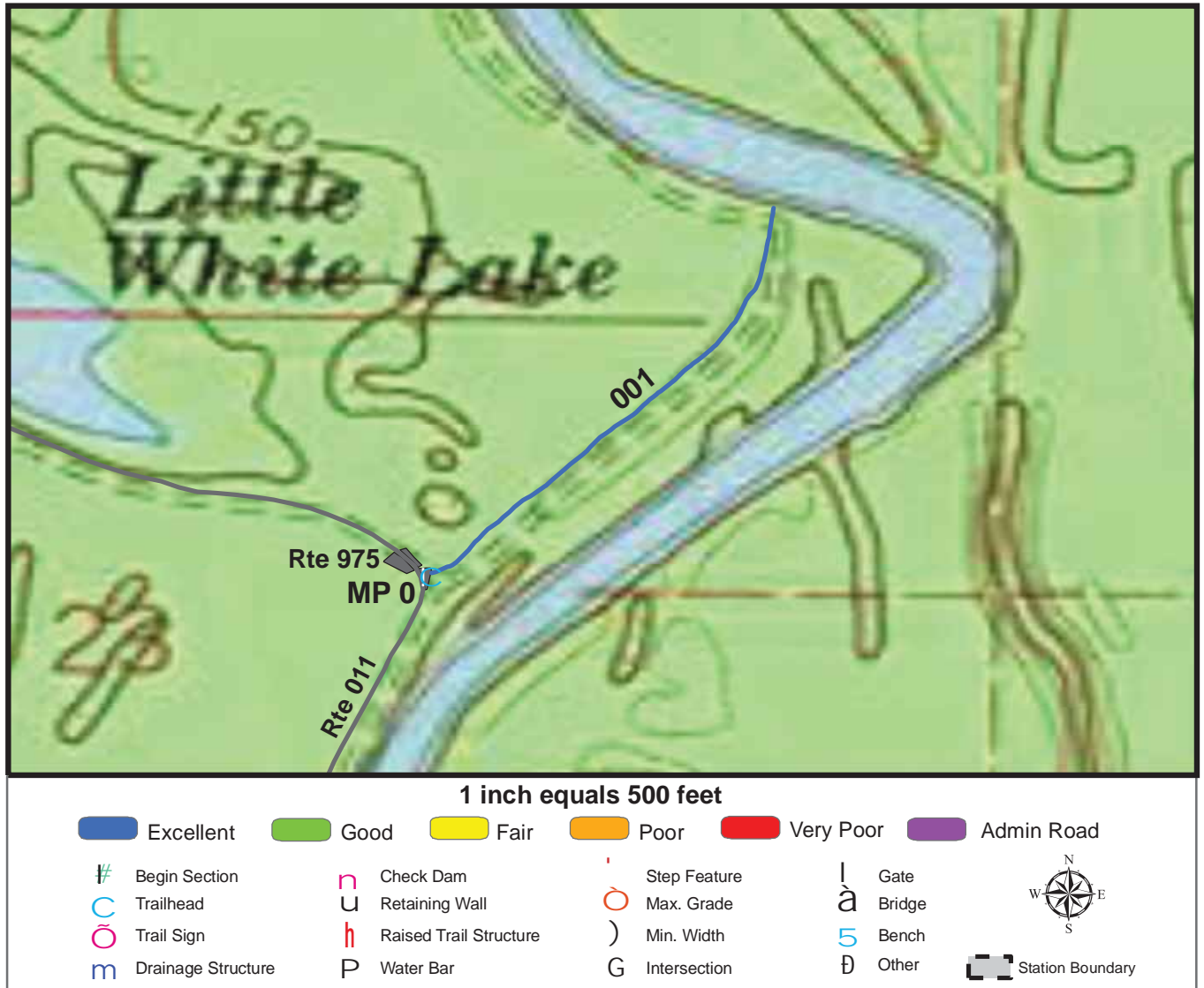
TOTAL LENGTH: 0.02 Miles

Section Number	001				
Section Length (miles)	0.02				
SAMMS Number	N/A				
Rating Date	5/15/2006				
Trail Section Information					
Trail Class	TC1				
Surface Type	Native				
Surface Firmness	Firm				
Width (inches)	60				
Average Grade (%)	1.9				
Average X-slope (%)	0.1				
Trail Condition Information					
Deferred Maintenance	\$0				
CRV	\$1652				
FCI	0				
Condition	Excellent				

Trail Condition TOTALS

Deferred Maintenance	CRV	FCI	Condition
\$0	\$1652	0	Excellent

TRAIL CONDITION



Trail Name: Big Island Chute Trail

Refuge Name: White River NWR

Trail Number: T300

Region: 4

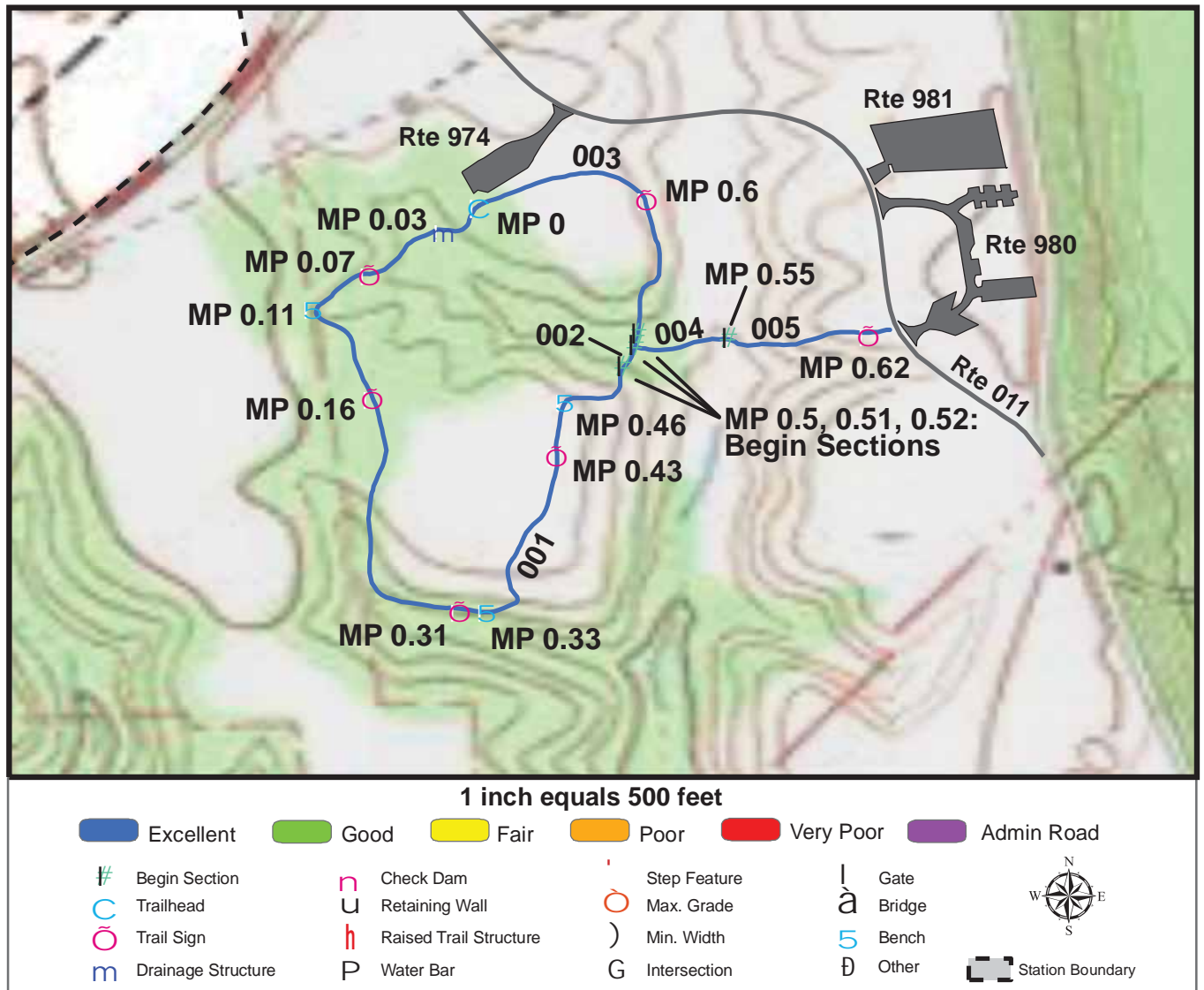
TOTAL LENGTH: 0.27 Miles

Section Number	001				
Section Length (miles)	0.27				
SAMMS Number	N/A				
Rating Date	5/15/2006				
Trail Section Information					
Trail Class	TC3				
Surface Type	Native				
Surface Firmness	Firm				
Width (inches)	144				
Average Grade (%)	1.2				
Average X-slope (%)	1.1				
Trail Condition Information					
Deferred Maintenance	\$0				
CRV	\$63491				
FCI	0				
Condition	Excellent				

Trail Condition TOTALS

Deferred Maintenance	CRV	FCI	Condition
\$0	\$63491	0	Excellent

TRAIL CONDITION



Trail Name: Upland Nature Trail

Refuge Name: White River NWR

Trail Number: T400

Region: 4

TOTAL LENGTH: 0.81 Miles

Section Number	001	002	003	004	005
Section Length (miles)	0.5	0.02	0.17	0.04	0.08
SAMMS Number	10040223	10040223	10040223	10040223	10040223
Rating Date	5/15/2006	5/15/2006	5/15/2006	5/15/2006	5/15/2006
Trail Section Information					
Trail Class	TC4	TC4	TC4	TC4	TC4
Surface Type	Asphalt	Boardwalk	Asphalt	Boardwalk	Asphalt
Surface Firmness	Paved	Hard	Paved	Hard	Paved
Width (inches)	108	96	108	96	108
Average Grade (%)	2.4	2.4	2.4	2.4	2.4
Average X-slope (%)	3	3	3	3	3
Trail Condition Information					
Deferred Maintenance	\$0	\$0	\$0	\$0	\$0
CRV	\$125588	\$16882	\$41372	\$38198	\$19273
FCI	0	0	0	0	0
Condition	Excellent	Excellent	Excellent	Excellent	Excellent

Trail Condition TOTALS

Deferred Maintenance	CRV	FCI	Condition
\$0	\$241313	0	Excellent

PHOTOGRAPHIC SHEET

TRAIL NUMBER: **T200**

STATION: White River NWR

DATE: 5/15/2006



Photo # 2 - MP 0.0 - Trailhead

TRAIL NUMBER: **T201**

STATION: White River NWR

DATE: 5/15/2006



Photo # 3 - MP 0.0 - Trailhead

PHOTOGRAPHIC SHEET

TRAIL NUMBER: **T201**

STATION: White River NWR

DATE: 5/15/2006



Photo # 4 - MP 0.04 - Bridge

TRAIL NUMBER: **T202**

STATION: White River NWR

DATE: 5/15/2006



Photo # 5 - MP 0.0 - Trailhead

PHOTOGRAPHIC SHEET

TRAIL NUMBER: **T300**

STATION: White River NWR

DATE: 5/15/2006



Photo # 1 - MP 0.0 - Trailhead

TRAIL NUMBER: **T400**

STATION: White River NWR

DATE: 5/15/2006



Photo # 6 - MP 0.0 - Trailhead

PHOTOGRAPHIC SHEET

TRAIL NUMBER: T400

STATION: White River NWR

DATE: 5/15/2006



Photo # 9 - MP 0.07 - Sign

TRAIL NUMBER: T400

STATION: White River NWR

DATE: 5/15/2006



Photo # 10 - MP 0.16 - Sign

PHOTOGRAPHIC SHEET

TRAIL NUMBER: **T400**

STATION: White River NWR

DATE: 5/15/2006



Photo # 11 - MP 0.31 - Sign

TRAIL NUMBER: **T400**

STATION: White River NWR

DATE: 5/15/2006



Photo # 12 - MP 0.43 - Sign

PHOTOGRAPHIC SHEET

TRAIL NUMBER: **T400**

STATION: White River NWR

DATE: 5/15/2006



Photo # 13 - MP 0.5 - Begin Section 002

TRAIL NUMBER: **T400**

STATION: White River NWR

DATE: 5/15/2006



Photo # 15 - MP 0.51 - Begin Section 004

PHOTOGRAPHIC SHEET

TRAIL NUMBER: **T400**

STATION: White River NWR

DATE: 5/15/2006



Photo # 14 - MP 0.52 - Begin Section 003

TRAIL NUMBER: **T400**

STATION: White River NWR

DATE: 5/15/2006



Photo # 16 - MP 0.55 - Begin Section 005

PHOTOGRAPHIC SHEET

TRAIL NUMBER: **T400**

STATION: White River NWR

DATE: 5/15/2006



Photo # 18 - MP 0.6 - Sign

TRAIL NUMBER: **T400**

STATION: White River NWR

DATE: 5/15/2006



Photo # 17 - MP 0.62 - Sign

APPENDIX

Glossary of Terms and Abbreviations

Acc Info	Accessibility information available at trailhead.
Action	Action required to correct deficiency.
Admin Road	Administration Road. Admin Roads signed and advertised as trails are included in the trail inventory but a condition assessment is NOT done.
Alt SAMMS	Asset number of Alternate Facility Type.
Alt Type	Alternate Facility Type. Trail lies on a feature such as a levee, dam, administrative road or bridge, which has a separate SAMMS number.
AvgGrade	The average grade of the trail (%). The average of five measurements for trails less than two miles and ten measurements for trails equal to or greater than 2 miles.
AvgSlope	The average cross-slope of the trail (%). The average of five measurements for trails less than two miles and ten measurements for trails equal to or greater than 2 miles.
Check Dam	A small dam constructed across a drainage ditch, swale, or channel to lower the speed of concentrated flows.
Condition	Subjective rating of trail based on Facility Condition Index (FCI): FCI \leq .01 = Excellent FCI .011 - .05 = Good FCI .051 - .10 = Fair FCI .11 - .20 = Poor FCI $>$.20 = Very Poor
Crib Wall	Retaining wall.
Current Replacement Value (CRV)	The value of an asset determined by the estimated cost of replacing it.
Def type	Deficiency Type: Trail Structure, Drainage, Erosion, Obstacle, Trail Location, Other.

Deferred Maintenance (DM)	Maintenance that was not performed when scheduled.
Elem ID	Unique identifier for each trail section: Org Code-Trail Number-Section Number.
Facility Condition Index (FCI)	DM/CRV
Grouped Features	Grouped features include non-unique signs (mileposts, interpretive signs, species identification, etc.), water bars, check dams, steps, drain and drainage dips. For any given grouped feature, a GPS point and photo are taken for the first occurrence only and the total number of features in the group are entered into the “quantity” field of the data dictionary. CRV for grouped features are included in whatever trail section the GPS point was taken.
Info Type	Type of accessibility information available at trailhead: brochure, sign or other.
Item	Item on which the “Action” (see above) will be performed.
Manage_Use	Managed use of the trail: HIKE, BIKE, NSPC (non-specified), PACK, POR (portage), SNOWSHOE, XSKI (cross-country ski), OTHER.
Max Grade	Maximum grade (in percent) of trail. Only collected for Trail Classes 4 and 5 and when > 10%.
Min Width	Minimum Width (inches) of trail. Only collected for Trail Classes 4 and 5.
MP (Milepost)	Distance, in miles, of a trail feature or deficiency from the Trailhead.
Puncheon	Log footbridge used in area of poor drainage.
Raised Trail Structure	Boardwalk, Turnpike, Puncheon.
SAMMS No	Asset Number

Station Boundary	Approved Acquisition Boundary files downloaded from FWS website in March 2007.
T Class	Trail Class: TC1-5 (see Trail Classification System for descriptions).
Tr Desig	Trail Designation: Standard (Std), National Historic Trail (NHT), National Recreation Trail (NRT), National Scenic Trail (NST).
Trail No	Trails are numbered based on Trail Class at the trailhead. TC 1 = T100 series, TC2 = T200 series, etc.
Turnpike	Trail tread elevated with dirt, rock or other aggregate from parallel side ditches and held in place by logs.



Trail Classification

Trail Attributes	Trail Class 1 Minimal/Undeveloped Trail	Trail Class 2 Simple/Minor Development Trail	Trail Class 3 Developed/Improved Trail	Trail Class 4 Highly Developed Trail	Trail Class 5 Fully Developed Trail
General Criteria Physical Characteristics to be Applied to All National Forest System Trails					
Tread & Traffic Flow	<ul style="list-style-type: none"> •Tread intermittent and often indistinct •May require route finding •Native materials only 	<ul style="list-style-type: none"> •Tread discernible and continuous, but narrow and rough •Few or no allowances constructed for passing •Native materials 	<ul style="list-style-type: none"> •Tread obvious and continuous •Width accommodates unhindered one-lane travel (occasional allowances constructed for passing) •Typically native materials 	<ul style="list-style-type: none"> •Tread wide and relatively smooth with few irregularities •Width may consistently accommodate two-lane travel •Native or imported materials •May be hardened 	<ul style="list-style-type: none"> •Width generally accommodates two-lane and two-directional travel, or provides frequent passing turnouts •Commonly hardened with asphalt or other imported material
Obstacles	<ul style="list-style-type: none"> •Obstacles common •Narrow passages; brush, steep grades, rocks and logs present 	<ul style="list-style-type: none"> •Obstacles occasionally present •Blockages cleared to define route and protect resources •Vegetation may encroach into trailway 	<ul style="list-style-type: none"> •Obstacles infrequent •Vegetation cleared outside of trailway 	<ul style="list-style-type: none"> •Few or no obstacles exist •Grades typically <12% •Vegetation cleared outside of trailway 	<ul style="list-style-type: none"> •No obstacles •Grades typically <8%
Constructed Features & Trail Elements	<ul style="list-style-type: none"> •Minimal to non-existent •Drainage is functional •No constructed bridges or foot crossings 	<ul style="list-style-type: none"> •Structures are of limited size, scale, and number •Drainage functional •Structures adequate to protect trail infrastructure and resources •Primitive foot crossings and fords 	<ul style="list-style-type: none"> •Trail structures (walls, steps, drainage, raised trail) may be common and substantial •Trail bridges as needed for resource protection and appropriate access •Generally native materials used in Wilderness 	<ul style="list-style-type: none"> •Structures frequent and substantial •Substantial trail bridges are appropriate at water crossings •Trailside amenities may be present 	<ul style="list-style-type: none"> •Structures frequent or continuous; may include curbs, handrails, trailside amenities, and boardwalks •Drainage structures frequent; may include culverts and road-like designs
Signs	<ul style="list-style-type: none"> •Minimum required •Generally limited to regulation and resource protection •No destination signs present 	<ul style="list-style-type: none"> •Minimum required for basic direction •Generally limited to regulation and resource protection •Typically very few or no destination signs present 	<ul style="list-style-type: none"> •Regulation, resource protection, user reassurance •Directional signs at junctions, or when confusion is likely •Destination signs typically present •Informational and interpretive signs may be present outside of Wilderness 	<ul style="list-style-type: none"> •Wide variety of signs likely present •Informational signs likely (outside of Wilderness) •Interpretive signs possible (outside of Wilderness) •Trail Universal Access information likely displayed at trailhead 	<ul style="list-style-type: none"> •Wide variety of signage is present •Information and interpretive signs likely •Trail Universal Access information is typically displayed at trailhead •
Typical Recreation Environments & Experience²	<ul style="list-style-type: none"> •Natural, unmodified •ROS: Often Primitive setting, but may occur in other ROS settings •WROS: Primitive 	<ul style="list-style-type: none"> •Natural, essentially unmodified •ROS: Typically Semi-Primitive setting •WROS: Primitive to Semi-Primitive 	<ul style="list-style-type: none"> •Natural, primarily unmodified •ROS: Typically Semi-Primitive to Roaded Natural setting •WROS: Semi-Primitive to Transition 	<ul style="list-style-type: none"> •May be modified •ROS: Typically Roaded Natural to Rural setting •WROS: Transition (rarely present in Wilderness) 	<ul style="list-style-type: none"> •Can be highly modified •ROS: Typically Rural to Urban setting •Commonly associated with Visitor Centers or high-use recreation sites •Not present in Wilderness

Note: Trail Class descriptions define "typical" attributes, and exceptions may occur for any attribute.