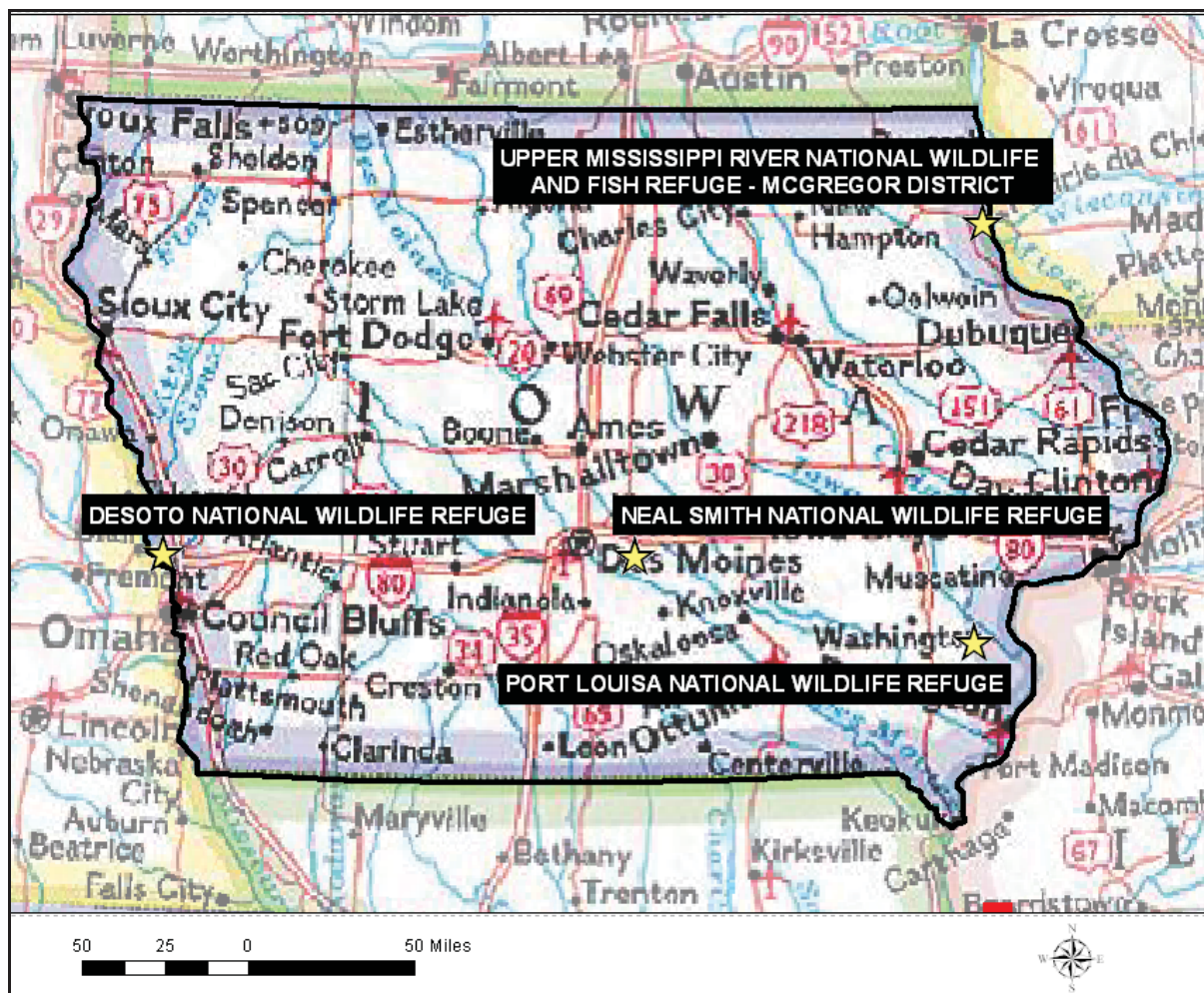


# The Trail Inventory of U.S. Fish and Wildlife Service Stations in Iowa



Prepared By:  
Federal Highway Administration  
Central Federal Lands Highway Division  
September 2006



# TABLE OF CONTENTS

<b><u>CHAPTER</u></b>		<b><u>PAGE</u></b>
<b>1.</b>	<b><u>IA STATE SUMMARY</u></b>	
	Table of Contents	1-1
	List of Refuges	1-2
	Mileage by Trail Class, Condition, and Surface	1-3
<b>2-5.</b>	<b><u>REFUGE SUMMARIES</u></b>	
	Mileage by Trail Class, Condition, and Surface	X-1
	Trail Location Map	X-2
	Trail Identification	X-3
	Condition and Deficiency Sheets	X-4
	Photographic Sheets	X-5
<b>6.</b>	<b><u>APPENDIX</u></b>	
	Glossary of Terms and Abbreviations	6-1
	Trail Classification System	6-4

## FWS Stations in Iowa with Trails

Station Name	Trail Miles	Chapter
Desoto NWR	3.64	2
Neal Smith NWR	3.15	3
Port Louisa NWR	2.02	4
Upper Mississippi NWR - McGregor District	1.28	5

# Iowa FWS Stations Trail Summaries

## Trail Miles and Percentages by Surface Type and Condition

Trail Surface Type	Mileage by Trail Condition												Total Miles
	Excellent		Good		Fair		Poor		Very Poor		Not Rated*		
	MILES	%	MILES	%	MILES	%	MILES	%	MILES	%	MILES	%	
Native	1.88	19%	0.16	2%		0%		0%		0%		0%	2.04
Gravel	2.23	22%		0%		0%		0%		0%		0%	2.23
Asphalt		0%	1.84	18%		0%		0%		0%		0%	1.84
Concrete	0.52	5%		0%		0%		0%		0%		0%	0.52
Turnpike		0%		0%		0%		0%		0%		0%	0.00
Boardwalk	0.08	1%		0%		0%		0%		0%		0%	0.08
Puncheon		0%		0%		0%		0%		0%		0%	0.00
Woodchips	0.12	1%		0%		0%		0%		0%		0%	0.12
Mowed	1.88	19%		0%		0%		0%		0%		0%	1.88
Admin Road		0%		0%		0%		0%		0%	1.38	14%	1.38
Other		0%		0%		0%		0%		0%		0%	0.00
Totals	6.71	67%	2.00	20%	0.00	0%	0.00	0%	0.00	0%	1.38	14%	10.09

## Trail Miles and Percentages by Trail Classification and Condition

Trail Classificatio n	Mileage by Trail Condition												Total Miles
	Excellent		Good		Fair		Poor		Very Poor		Not Rated*		
	MILES	%	MILES	%	MILES	%	MILES	%	MILES	%	MILES	%	
TC1		0%		0%		0%		0%		0%		0%	0.00
TC2		0%		0%		0%		0%		0%		0%	0.00
TC3	4.84	48%	0.16	2%		0%		0%		0%	1.38	14%	6.38
TC4	1.35	13%		0%		0%		0%		0%		0%	1.35
TC5	0.52	5%	1.84	18%		0%		0%		0%		0%	2.36
Totals	6.71	67%	2.00	20%	0.00	0%	0.00	0%	0.00	0%	1.38	14%	10.09

\* Admin Roads are included in the inventory but are not rated for condition.

# **The Trail Inventory of DeSoto National Wildlife Refuge Missouri Valley, Iowa**



**Prepared By:  
Federal Highway Administration  
Central Federal Lands Highway Division  
September 2006**





# DeSoto NWR

## Trail and Trail Feature Summaries

### Trail Miles and Percentages by Surface Type and Condition

Trail Surface Type	Mileage by Trail Condition												Total Miles
	Excellent		Good		Fair		Poor		Very Poor		Not Rated*		
	MILES	%	MILES	%	MILES	%	MILES	%	MILES	%	MILES	%	
Native	0.75	21%		0%		0%		0%		0%		0%	0.75
Gravel	1.79	49%		0%		0%		0%		0%		0%	1.79
Asphalt		0%	0.07	2%		0%		0%		0%		0%	0.07
Concrete	0.16	4%		0%		0%		0%		0%		0%	0.16
Turnpike		0%		0%		0%		0%		0%		0%	0.00
Boardwalk	0.08	2%		0%		0%		0%		0%		0%	0.08
Puncheon		0%		0%		0%		0%		0%		0%	0.00
Woodchips		0%		0%		0%		0%		0%		0%	0.00
Mowed	0.79	22%		0%		0%		0%		0%		0%	0.79
Admin Road		0%		0%		0%		0%		0%		0%	0.00
Other		0%		0%		0%		0%		0%		0%	0.00
Totals	3.57	98%	0.07	2%	0.00	0%	0.00	0%	0.00	0%	0.00	0%	3.64

### Trail Miles and Percentages by Trail Classification and Condition

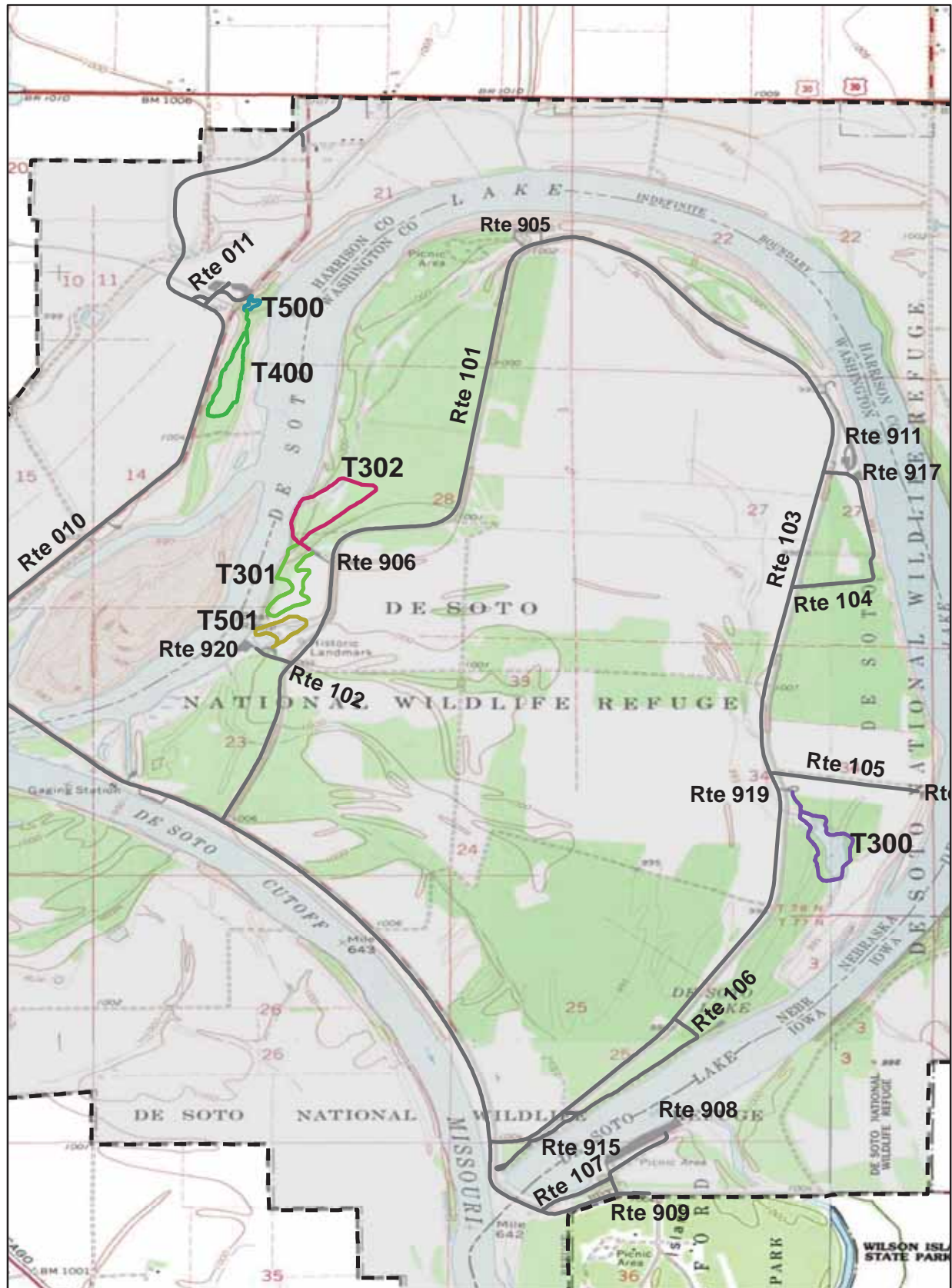
Trail Classification	Mileage by Trail Condition												Total Miles
	Excellent		Good		Fair		Poor		Very Poor		Not Rated*		
	MILES	%	MILES	%	MILES	%	MILES	%	MILES	%	MILES	%	
TC1		0%		0%		0%		0%		0%		0%	0.00
TC2		0%		0%		0%		0%		0%		0%	0.00
TC3	2.62	72%		0%		0%		0%		0%		0%	2.62
TC4	0.79	22%		0%		0%		0%		0%		0%	0.79
TC5	0.16	4%	0.07	2%		0%		0%		0%		0%	0.23
Totals	3.57	98%	0.07	2%	0.00	0%	0.00	0%	0.00	0%	0.00	0%	3.64

\* Admin Roads are included in the inventory but are not rated for condition.

## Trail Features

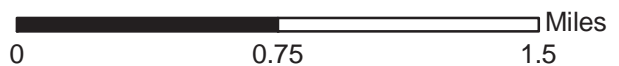
Trail Number	Feature Type	Quantity	Grouped Feature	Milepost	Photo
T300	Sign	2	No	0.00	0784
T300	Sign	1	No	0.00	0786
T300	Bench	1	No	0.07	N/A
T300	Bench	1	No	0.17	N/A
T300	Bench	1	No	0.31	N/A
T300	Culvert -lf	20	No	0.46	N/A
T300	Bench	1	No	0.59	N/A
T300	Boardwalk -lf	100	No	0.71	0787
T301	Sign	1	No	0.00	0788
T301	Sign	1	No	0.00	0788
T301	Bench	1	No	0.58	N/A
T302	Sign	1	No	0.00	0790
T302	Sign	2	No	0.00	0792
T302	Gate	1	No	0.00	0792
T302	Sign	10	Yes	0.03	0793
T302	Sign	1	No	0.03	0794
T302	Sign	1	No	0.05	0795
T302	Bench	2	No	0.26	N/A
T302	Other	1	No	0.66	N/A
T302	Bench	1	No	0.72	N/A
T302	Bench	1	No	0.03	N/A
T400	Bridge -sf	252	No	0.00	0780
T400	Sign	1	No	0.01	0781
T400	Sign	1	No	0.07	0783
T400	Bench	1	No	0.79	N/A
T400	Bench	1	No	0.24	N/A
T400	Bench	1	No	0.44	N/A
T400	Bench	1	No	0.66	N/A
T500	Sign	2	No	0.00	0777
T500	Bench	1	No	0.00	N/A
T500	Sign	1	No	0.08	0779
T500	Lookout/Ob Deck	1	No	0.08	N/A
T500	Lookout/Ob Deck	1	No	0.11	N/A
T501	Sign	1	No	0.00	0797
T501	Lookout/Ob Deck	1	No	0.06	N/A
T501	Bench	2	No	0.07	N/A
T501	Sign	2	No	0.07	0799
T501	Lookout/Ob Deck	1	No	0.30	N/A
sf-square feet					
lf-linear feet					
cf-cubic feet					

# DeSoto NATIONAL WILDLIFE REFUGE TRAIL LOCATION MAP



**Station Boundary**

**@ HQ/VC**





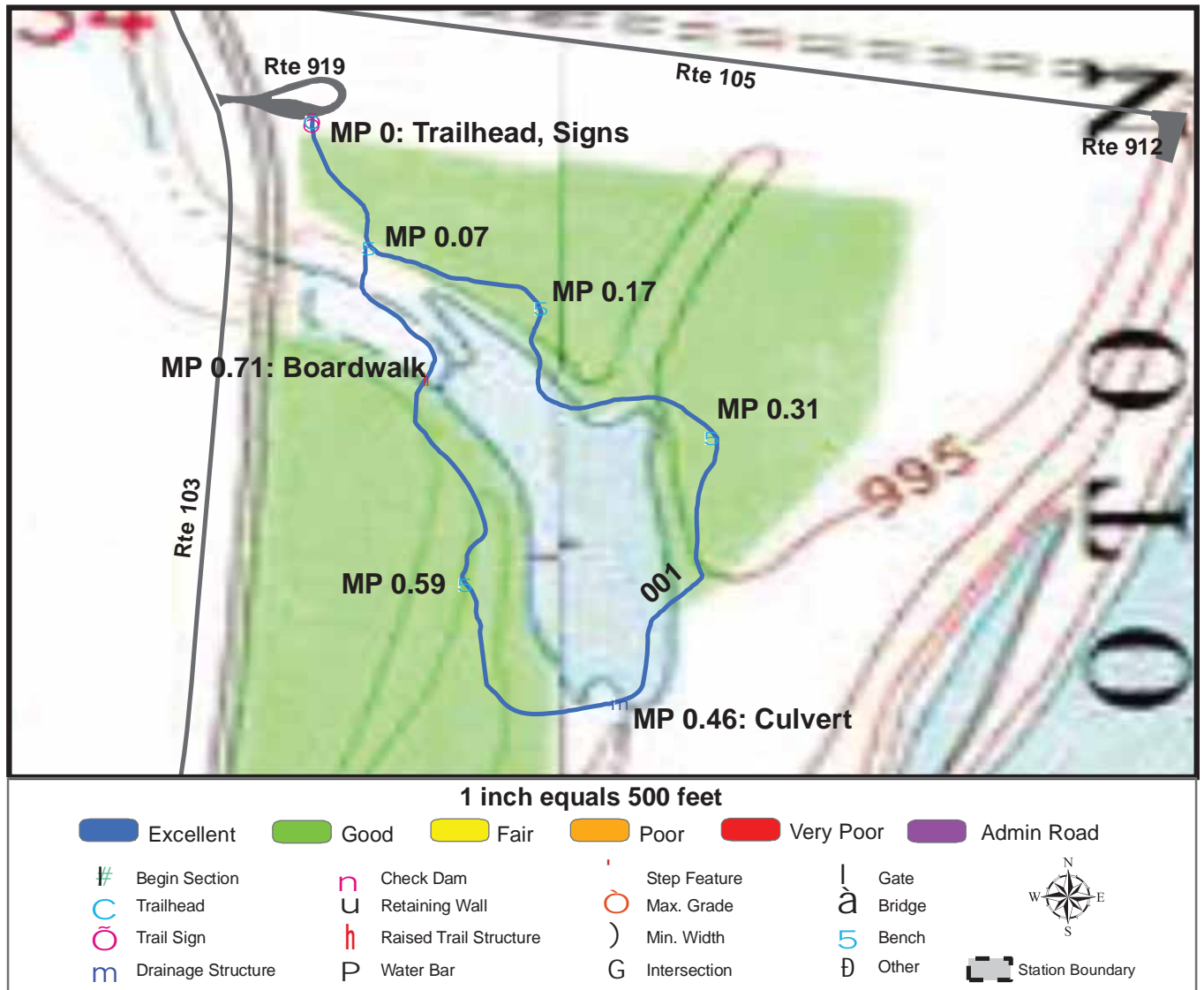
## TRAILS ID

Station Name: DeSoto NWR

Org. Code: 33510

Trail #	Trail Name	Surface Type	SAMMS	Trail Mileage	Trail Description (Begin and End point of trail)
T300	Wood Duck Trail	Mowed	10012849	0.79	From Wood Duck Nature Trail Parking Area (Rte 919) to end of trail
T301	Grassland Nature Trail	Gravel	10012866	0.73	From Cottonwood Nature Trail Parking Area (Rte 906) to Cottonwood Nature Trail
T302	Cottonwood Nature Trail	Native	10012866	0.75	From Cottonwood Nature Trail Parking Area (Rte 906) to Grassland Nature Trail
T400	Missouri Meander Foot Trail	Gravel	10012828	0.79	From Missouri Meander Trail w/viewing area (T500) to end of loop
T500	Missouri Meander Foot Trail w/viewing area	Concrete	10012846	0.16	From Visitor Center Parking (Rte 900) to end of loop
T501	Bertrand Excavation Site Trail	Gravel	10012870	0.42	From Excavation Site Parking Area #1 (Rte 907) to end of loop

# TRAIL CONDITION



**Trail Name:** Wood Duck

**Refuge Name:** DeSoto NWR

**Trail Number:** T300

**Region:** 3

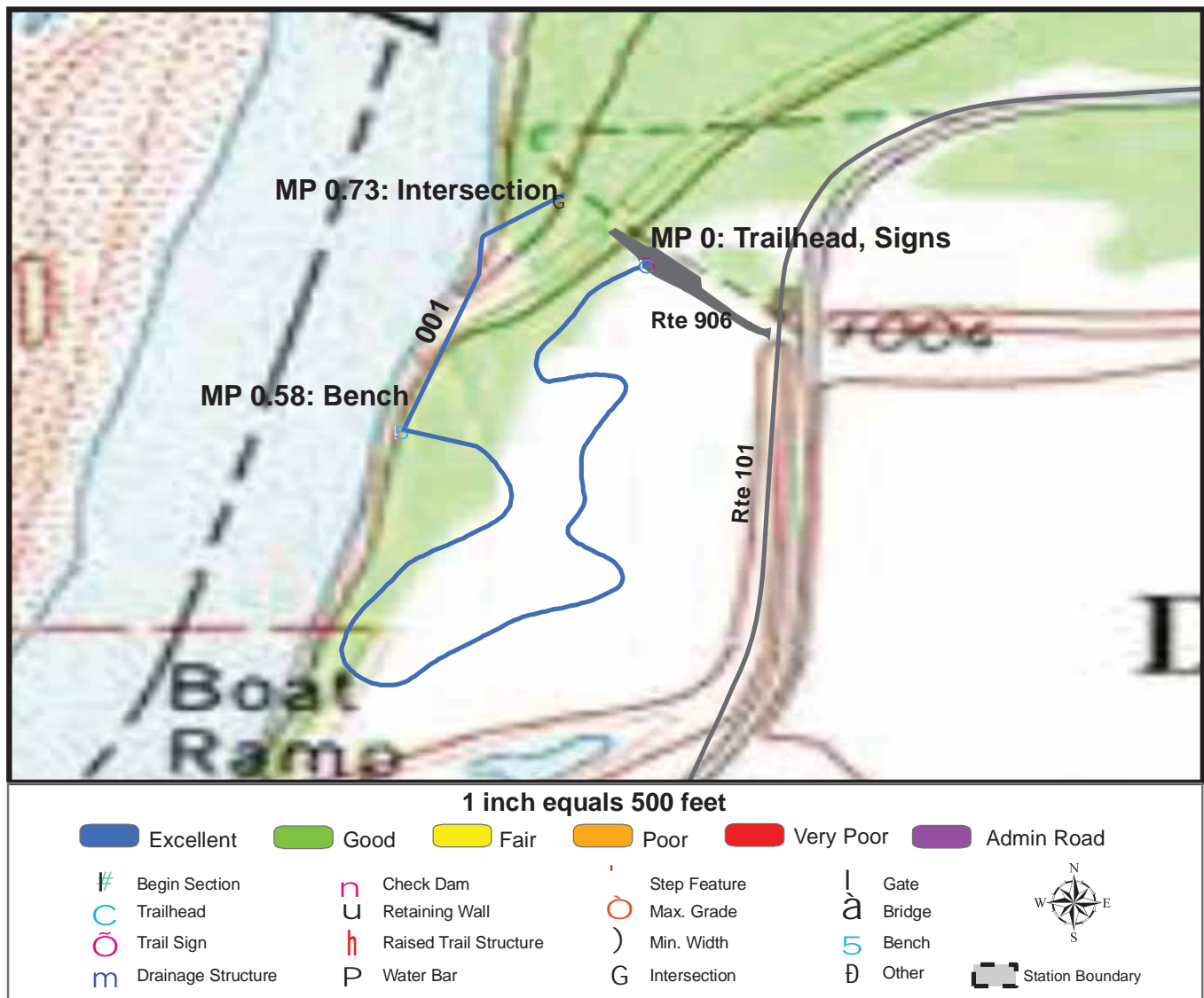
**TOTAL LENGTH:** 0.79 Miles

Section Number	001				
Section Length (miles)	0.79				
SAMMS Number	10012849				
Rating Date	9/12/2006				
<b>Trail Section Information</b>					
Trail Class	TC3				
Surface Type	Mowed				
Surface Firmness	Firm				
Width (inches)	96				
Average Grade (%)	4.1				
Average X-slope (%)	2.4				
<b>Trail Condition Information</b>					
Deferred Maintenance	\$0				
CRV	\$39300				
FCI	0				
Condition	Excellent				

## Trail Condition TOTALS

Deferred Maintenance	CRV	FCI	Condition
\$0	\$39300	0	Excellent

TRAIL CONDITION



Trail Name: Grassland Nature Trail

Refuge Name: DeSoto NWR

Trail Number: T301

Region: 3

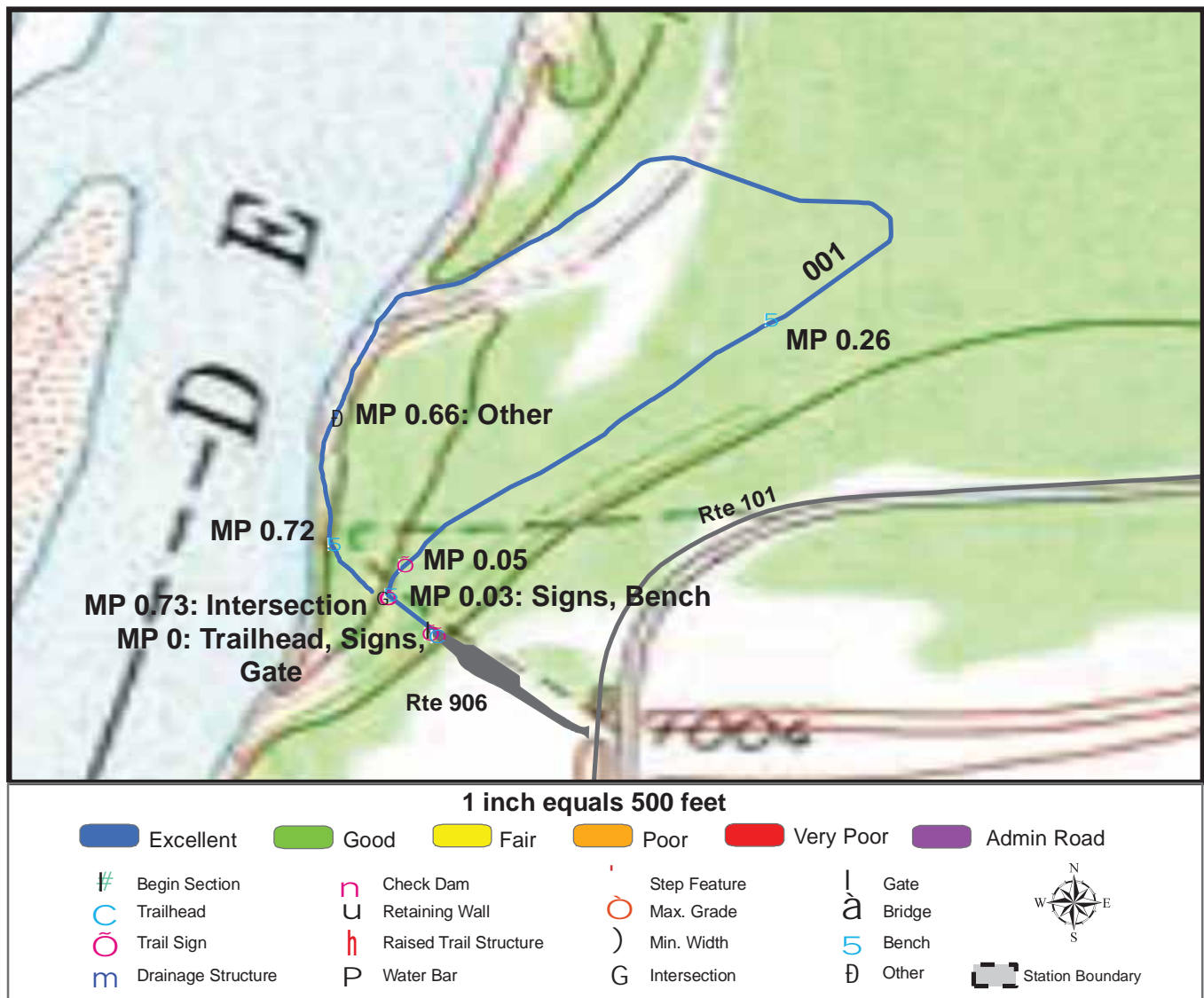
TOTAL LENGTH: 0.73 Miles

Section Number	001				
Section Length (miles)	0.73				
SAMMS Number	10012866				
Rating Date	9/12/2006				
<b>Trail Section Information</b>					
Trail Class	TC3				
Surface Type	Gravel				
Surface Firmness	Hard				
Width (inches)	72				
Average Grade (%)	3.4				
Average X-slope (%)	1.5				
<b>Trail Condition Information</b>					
Deferred Maintenance	\$0				
CRV	\$102500				
FCI	0				
Condition	Excellent				

Trail Condition TOTALS

Deferred Maintenance	CRV	FCI	Condition
\$0	\$102500	0	Excellent

TRAIL CONDITION



Trail Name: Cottonwood Nature Trail

Refuge Name: DeSoto NWR

Trail Number: T302

Region: 3

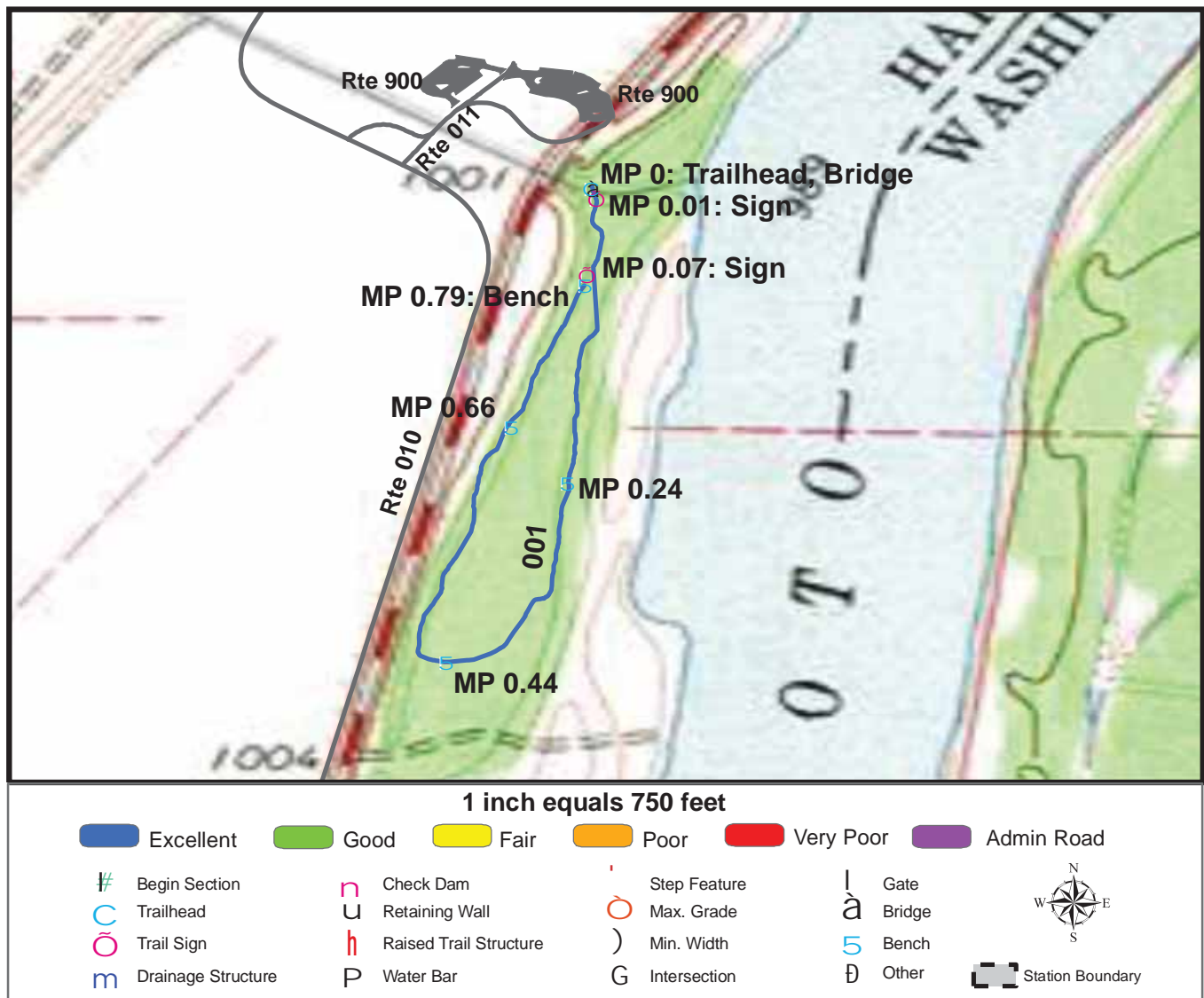
TOTAL LENGTH: 0.75 Miles

Section Number	001				
Section Length (miles)	0.75				
SAMMS Number	10012866				
Rating Date	9/12/2006				
<b>Trail Section Information</b>					
Trail Class	TC3				
Surface Type	Native				
Surface Firmness	Hard				
Width (inches)	72				
Average Grade (%)	3				
Average X-slope (%)	1.4				
<b>Trail Condition Information</b>					
Deferred Maintenance	\$0				
CRV	\$98800				
FCI	0				
Condition	Excellent				

Trail Condition TOTALS

Deferred Maintenance	CRV	FCI	Condition
\$0	\$98800	0	Excellent

TRAIL CONDITION



Trail Name: Missouri Meander Foot Trail

Refuge Name: DeSoto NWR

Trail Number: T400

Region: 3

TOTAL LENGTH: 0.79 Miles

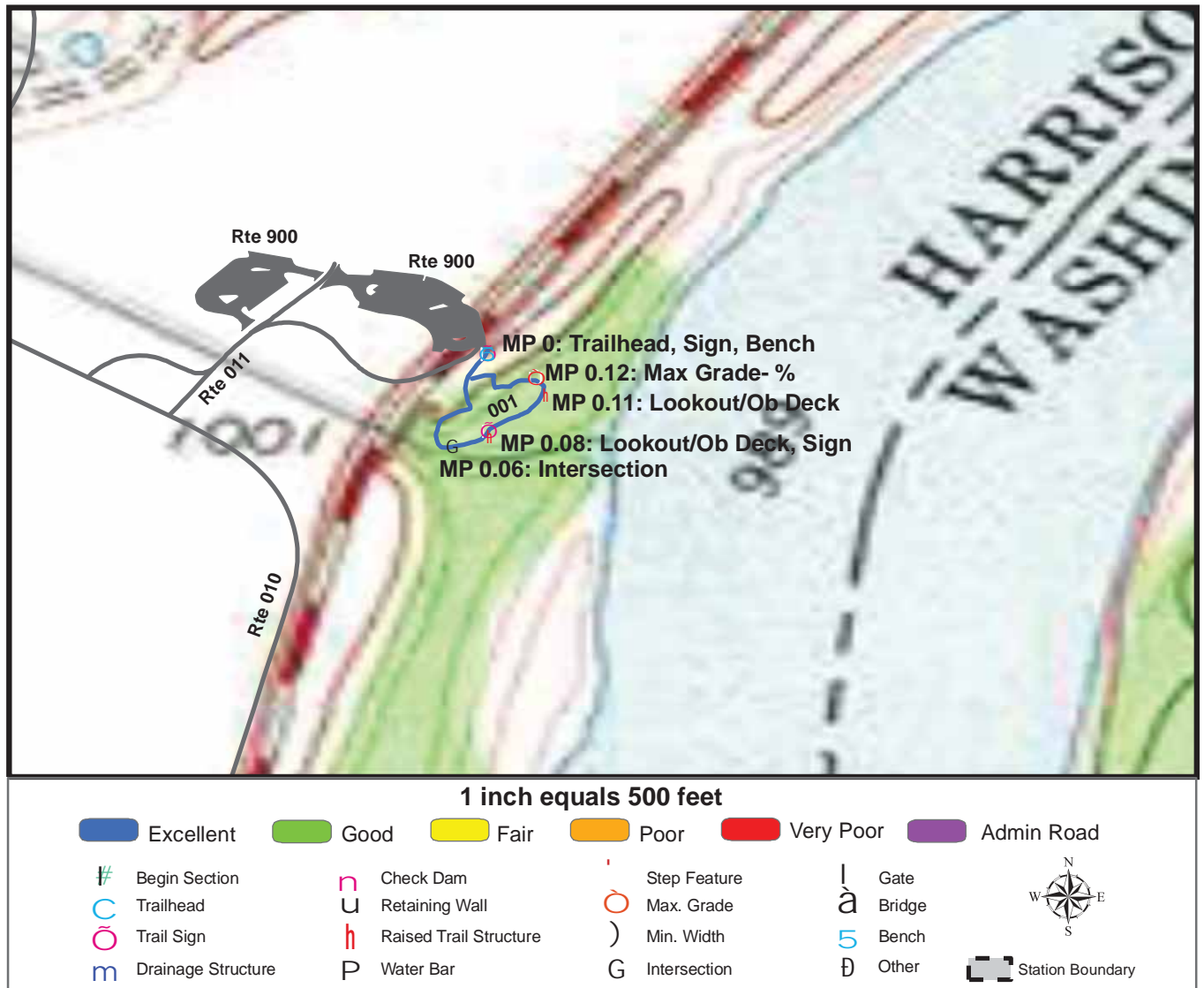
Section Number	001				
Section Length (miles)	0.79				
SAMMS Number	10012828				
Rating Date	9/11/2006				
<b>Trail Section Information</b>					
Trail Class	TC4				
Surface Type	Gravel				
Surface Firmness	Hard				
Width (inches)	60				
Average Grade (%)	2.5				
Average X-slope (%)	2.2				
<b>Trail Condition Information</b>					
Deferred Maintenance	\$0				
CRV	\$106400				
FCI	0				
Condition	Excellent				

Trail Condition TOTALS

Deferred Maintenance	CRV	FCI	Condition
\$0	\$106400	0	Excellent



# TRAIL CONDITION



**Trail Name:** Missouri Meander Trail w/viewing area Refuge Name: DeSoto NWR

**Trail Number:** T500

**Region:** 3

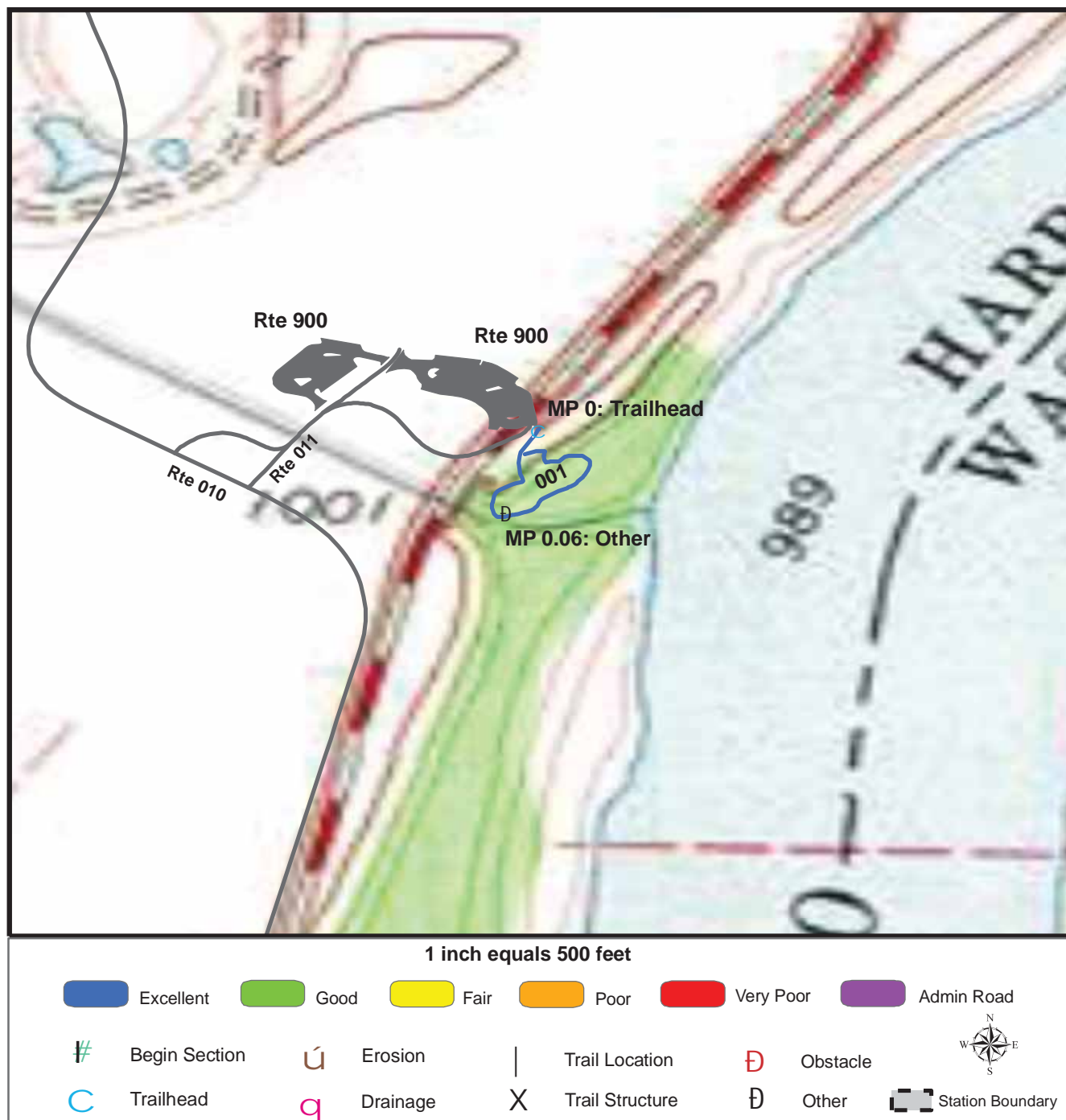
**TOTAL LENGTH:** 0.16 Miles

Section Number	001				
Section Length (miles)	0.16				
SAMMS Number	10012846				
Rating Date	9/11/2006				
<b>Trail Section Information</b>					
Trail Class	TC5				
Surface Type	Concrete				
Surface Firmness	Paved				
Width (inches)	78				
Average Grade (%)	4.1				
Average X-slope (%)	1.3				
<b>Trail Condition Information</b>					
Deferred Maintenance	\$300				
CRV	\$36100				
FCI	0.008				
Condition	Excellent				

## Trail Condition TOTALS

Deferred Maintenance	CRV	FCI	Condition
\$300	\$36100	0.008	Excellent

## TRAIL DEFICIENCY



**Trail Name:** Missouri Meander Trail w/viewing area    **Refuge Name:** DeSoto NWR

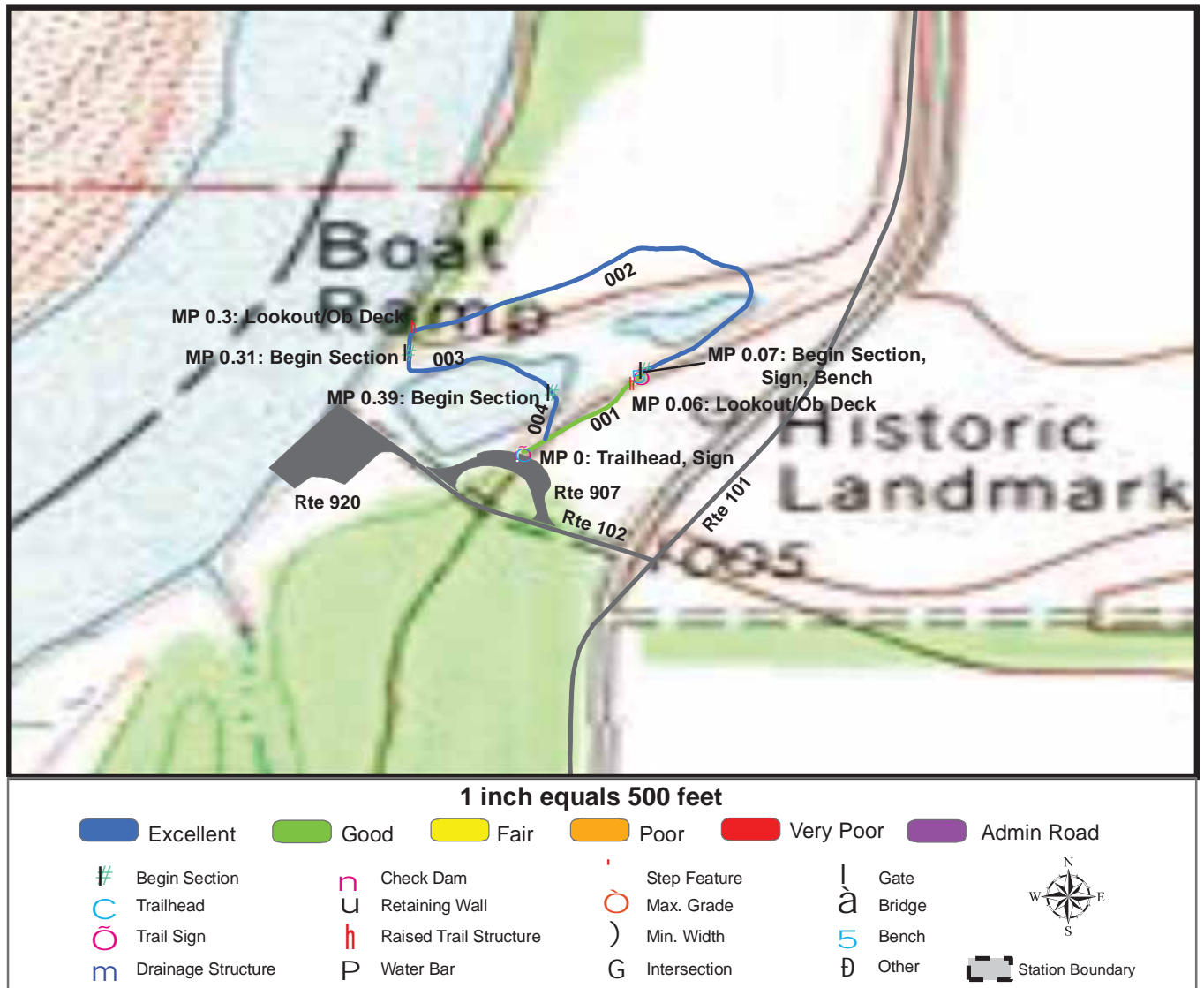
**Trail Number:** T500

Region: 3

TOTAL LENGTH: 0.16 Miles

Mile Post	0.06			
Section Number	001			
Photo Number	0778			
Deficiency	Other			
Action	Repair			
Item	Tread -sf			
Quantity	90			
Deferred Maintenance	\$300			

# TRAIL CONDITION



**Trail Name:** Bertrand Excavation Site Trail

**Refuge Name:** DeSoto NWR

**Trail Number:** T501

**Region:** 3

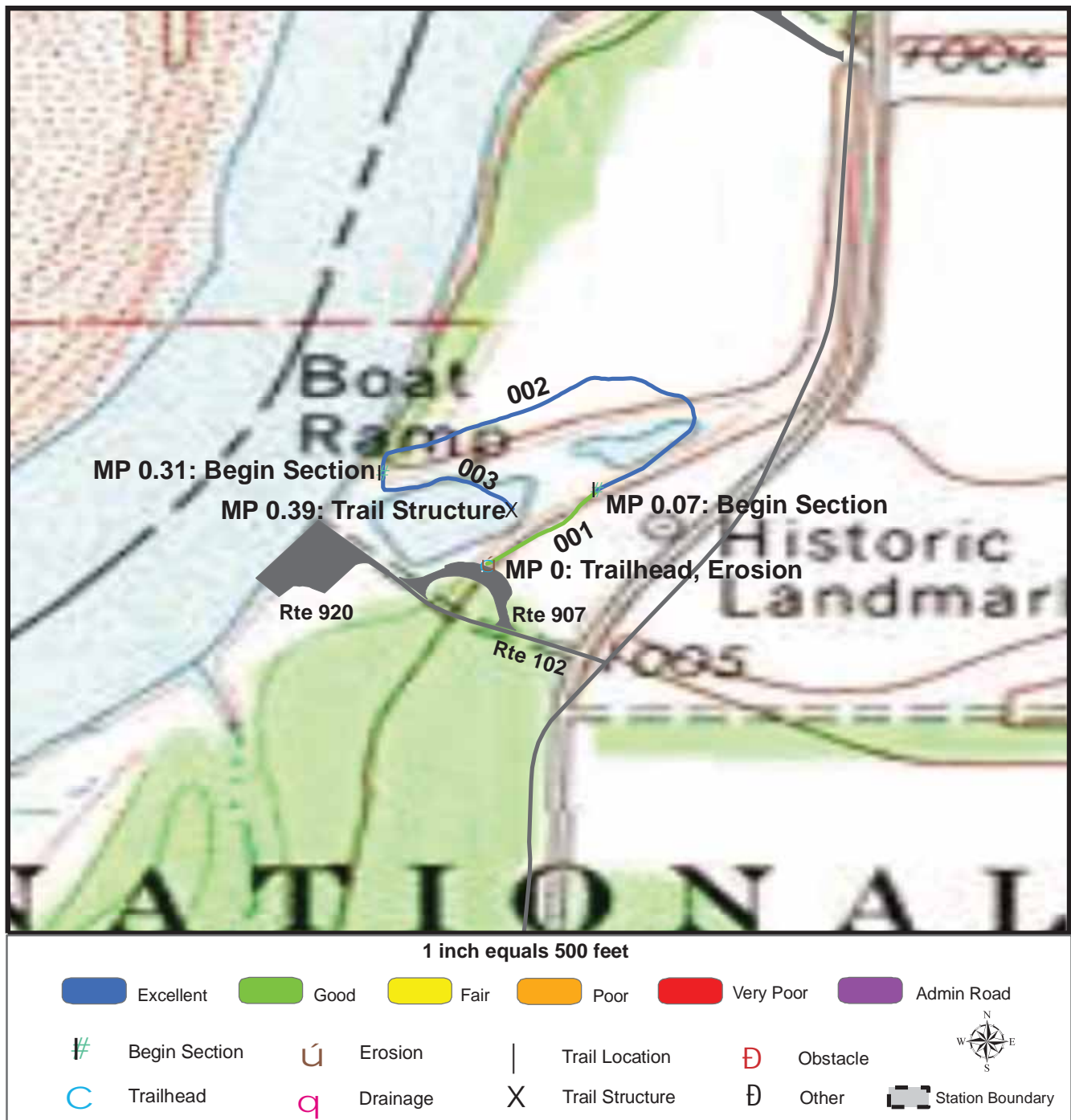
**TOTAL LENGTH:** 0.42 Miles

Section Number	001	002	003	004	
Section Length (miles)	0.07	0.24	0.08	0.03	
SAMMS Number	10012870	10012870	10012870	10012870	
Rating Date	9/12/2006	9/12/2006	9/12/2006	9/12/2006	
<b>Trail Section Information</b>					
Trail Class	TC5	TC3	TC3	TC3	
Surface Type	Asphalt	Gravel	Boardwalk	Gravel	
Surface Firmness	Paved	Hard	Paved	Hard	
Width (inches)	72	60	72	60	
Average Grade (%)	2.8	2.8	2.8	2.8	
Average X-slope (%)	3.3	3.3	3.3	3.3	
<b>Trail Condition Information</b>					
Deferred Maintenance	\$200	\$0	\$200	\$0	
CRV	\$12400	\$28600	\$53500	\$3000	
FCI	0.016	0	0.004	0	
Condition	Good	Excellent	Excellent	Excellent	

## Trail Condition TOTALS

Deferred Maintenance	CRV	FCI	Condition
\$400	\$97500	0.004	Excellent

# TRAIL DEFICIENCY



Trail Name: Bertrand Excavation Site Trail

Refuge Name: DeSoto NWR

Trail Number: T501

Region: 3

TOTAL LENGTH: 0.42 Miles

Mile Post	0	0.39		
Section Number	001	003		
Photo Number	0798	0802		
Deficiency	Erosion	Trail Structure		
Action	Repair	Repair		
Item	Tread -sf	Boardwalk -lf		
Quantity	50	10		
Deferred Maintenance	\$200	\$200		



# PHOTOGRAPHIC SHEET

TRAIL NUMBER: **T300**  
STATION: DeSoto NWR  
DATE: 9/12/2006



Photo # 0785 - MP 0.0 - Trailhead

TRAIL NUMBER: **T300**  
STATION: DeSoto NWR  
DATE: 9/12/2006



Photo # 0784 - MP 0.0 - Sign



# PHOTOGRAPHIC SHEET

TRAIL NUMBER: T300

STATION: DeSoto NWR

DATE: 9/12/2006



Photo # 0786 - MP 0.0 - Sign

TRAIL NUMBER: T300

STATION: DeSoto NWR

DATE: 9/12/2006



Photo # 0787 - MP 0.71 - Boardwalk



# PHOTOGRAPHIC SHEET

TRAIL NUMBER: **T301**  
STATION: DeSoto NWR  
DATE: 9/12/2006



Photo # 0789 - MP 0.0 - Trailhead

TRAIL NUMBER: **T301**  
STATION: DeSoto NWR  
DATE: 9/12/2006



Photo # 0788 - MP 0.0 - Signs

# PHOTOGRAPHIC SHEET

TRAIL NUMBER: **T302**  
STATION: DeSoto NWR  
DATE: 9/12/2006



Photo # 0791 - MP 0.0 - Trailhead

TRAIL NUMBER: **T302**  
STATION: DeSoto NWR  
DATE: 9/12/2006

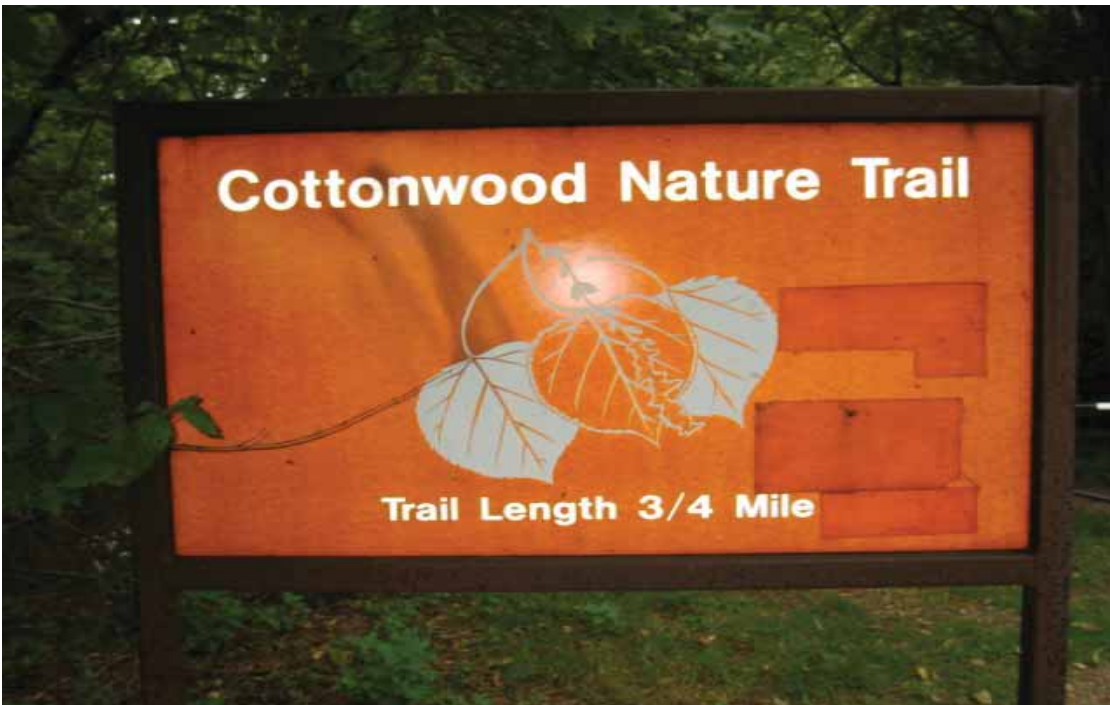


Photo # 0790 - MP 0.0 - Sign



# PHOTOGRAPHIC SHEET

TRAIL NUMBER: T302  
STATION: DeSoto NWR  
DATE: 9/12/2006



Photo # 0792 - MP 0.0 - Sign

TRAIL NUMBER: T302  
STATION: DeSoto NWR  
DATE: 9/12/2006



Photo # 0793 - MP 0.03 - Sign (Grouped Feature)

# PHOTOGRAPHIC SHEET

TRAIL NUMBER: T302  
STATION: DeSoto NWR  
DATE: 9/12/2006



Photo # 0794 - MP 0.03 - Sign

TRAIL NUMBER: T302  
STATION: DeSoto NWR  
DATE: 9/12/2006



Photo # 0795 - MP 0.05 - Sign



# PHOTOGRAPHIC SHEET

TRAIL NUMBER: **T400**  
STATION: DeSoto NWR  
DATE: 9/11/2006



Photo # 0780 - MP 0.0 - Trailhead, Bridge

TRAIL NUMBER: **T400**  
STATION: DeSoto NWR  
DATE: 9/11/2006



Photo # 0781 - MP 0.01 - Sign

# PHOTOGRAPHIC SHEET

TRAIL NUMBER: **T400**  
STATION: DeSoto NWR  
DATE: 9/11/2006



Photo # 0783 - MP 0.07 - Sign

TRAIL NUMBER: **T500**  
STATION: DeSoto NWR  
DATE: 9/11/2006



Photo # 0776 - MP 0.0 - Trailhead



# PHOTOGRAPHIC SHEET

TRAIL NUMBER: **T500**  
STATION: DeSoto NWR  
DATE: 9/11/2006



Photo # 0777 - MP 0.0 - Sign

TRAIL NUMBER: **T500**  
STATION: DeSoto NWR  
DATE: 9/11/2006



Photo # 0778 - MP 0.06 - Other Deficiency

# PHOTOGRAPHIC SHEET

TRAIL NUMBER: **T500**  
STATION: DeSoto NWR  
DATE: 9/11/2006



Photo # 0779 - MP 0.08 - Sign

TRAIL NUMBER: **T501**  
STATION: DeSoto NWR  
DATE: 9/12/2006



Photo # 0796 - MP 0.0 - Trailhead



# PHOTOGRAPHIC SHEET

TRAIL NUMBER: **T501**  
STATION: DeSoto NWR  
DATE: 9/12/2006



Photo # 0798 - MP 0.0 - Erosion Deficiency

TRAIL NUMBER: **T501**  
STATION: DeSoto NWR  
DATE: 9/12/2006



Photo # 0797 - MP 0.0 - Sign



# PHOTOGRAPHIC SHEET

TRAIL NUMBER: **T501**  
STATION: DeSoto NWR  
DATE: 9/12/2006



Photo # 0799 - MP 0.07 - Sign

TRAIL NUMBER: **T501**  
STATION: DeSoto NWR  
DATE: 9/12/2006



Photo # 0800 - MP 0.07 - Begin Section 002

# PHOTOGRAPHIC SHEET

TRAIL NUMBER: **T501**  
STATION: DeSoto NWR  
DATE: 9/12/2006



Photo # 0801 - MP 0.31 - Begin Section 003

TRAIL NUMBER: **T501**  
STATION: DeSoto NWR  
DATE: 9/12/2006



Photo # 0802 - MP 0.39 - Trail Structure Deficiency



# PHOTOGRAPHIC SHEET

TRAIL NUMBER: T501

STATION: DeSoto NWR

DATE: 9/12/2006



Photo # 0803 - MP 0.39 - Begin Section 004

# **The Trail Inventory of Neal Smith National Wildlife Refuge Prairie City, Iowa**



**Prepared By:  
Federal Highway Administration  
Central Federal Lands Highway Division  
September 2006**





# Neal Smith NWR

## Trail and Trail Feature Summaries

### Trail Miles and Percentages by Surface Type and Condition

Trail Surface Type	Mileage by Trail Condition												Total Miles
	Excellent		Good		Fair		Poor		Very Poor		Not Rated*		
	MILES	%	MILES	%	MILES	%	MILES	%	MILES	%	MILES	%	
Native		0%		0%		0%		0%		0%		0%	0.00
Gravel	0.44	14%		0%		0%		0%		0%		0%	0.44
Asphalt		0%	1.77	56%		0%		0%		0%		0%	1.77
Concrete	0.36	11%		0%		0%		0%		0%		0%	0.36
Turnpike		0%		0%		0%		0%		0%		0%	0.00
Boardwalk		0%		0%		0%		0%		0%		0%	0.00
Puncheon		0%		0%		0%		0%		0%		0%	0.00
Woodchips	0.12	4%		0%		0%		0%		0%		0%	0.12
Mowed	0.46	15%		0%		0%		0%		0%		0%	0.46
Admin Road		0%		0%		0%		0%		0%		0%	0.00
Other		0%		0%		0%		0%		0%		0%	0.00
Totals	1.38	44%	1.77	56%	0.00	0%	0.00	0%	0.00	0%	0.00	0%	3.15

### Trail Miles and Percentages by Trail Classification and Condition

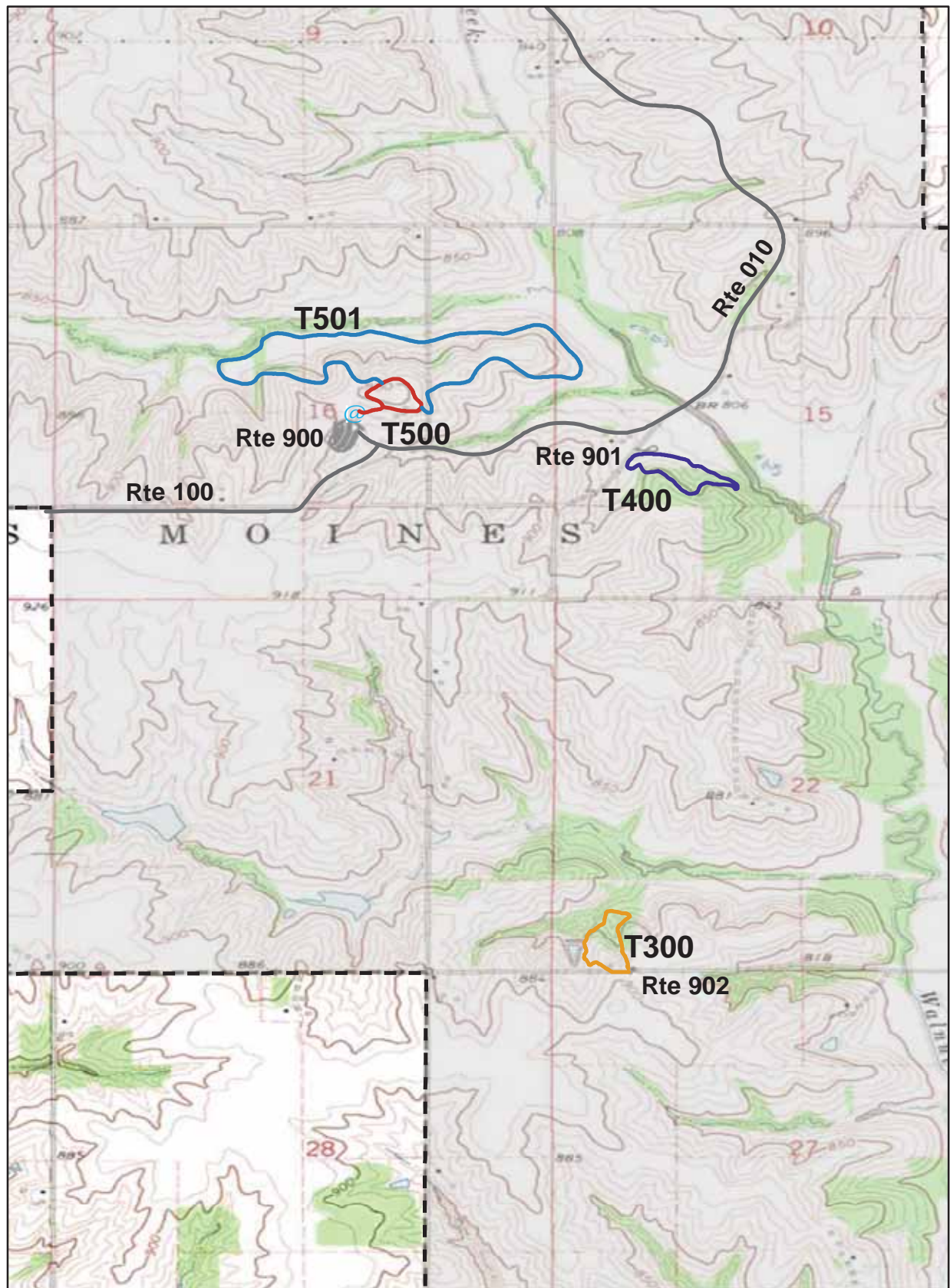
Trail Classification n	Mileage by Trail Condition												Total Miles
	Excellent		Good		Fair		Poor		Very Poor		Not Rated*		
	MILES	%	MILES	%	MILES	%	MILES	%	MILES	%	MILES	%	
TC1		0%		0%		0%		0%		0%		0%	0.00
TC2		0%		0%		0%		0%		0%		0%	0.00
TC3	0.46	15%		0%		0%		0%		0%		0%	0.46
TC4	0.56	18%		0%		0%		0%		0%		0%	0.56
TC5	0.36	11%	1.77	56%		0%		0%		0%		0%	2.13
Totals	1.38	44%	1.77	56%	0.00	0%	0.00	0%	0.00	0%	0.00	0%	3.15

\* Admin Roads are included in the inventory but are not rated for condition.

## Trail Features

Trail Number	Feature Type	Quantity	Grouped Feature	Milepost	Photo
T300	Sign	12	Yes	0.04	0869
T300	Boardwalk -lf	27	No	0.19	0871
T400	Sign	2	No	0.00	0863
T400	Sign	1	No	0.00	0862
T400	Water Bar:Wood -each	5	Yes	0.09	N/A
T400	Bench	1	No	0.11	N/A
T400	Bench	1	No	0.24	N/A
T400	Bench	1	No	0.27	N/A
T400	Bench	1	No	0.34	N/A
T500	Sign	2	No	0.00	0848
T500	Sign	1	No	0.00	0849
T500	Bench	1	No	0.36	N/A
T500	Bench	1	No	0.27	N/A
T500	Sign	2	No	0.27	0851
T500	Sign	2	No	0.27	0852
T500	Sign	2	No	0.19	0853
T500	Sign	1	No	0.20	0854
T500	Bench	1	No	0.20	N/A
T500	Sign	2	No	0.15	0855
T500	Bench	1	No	0.11	N/A
T500	Sign	3	No	0.11	0856
T500	Sign	3	No	0.05	0857
T501	Bench	2	No	0.26	N/A
T501	Sign	1	No	0.43	0860
T501	Bench	2	No	0.57	N/A
T501	Bench	2	No	0.81	N/A
T501	Bench	2	No	0.98	N/A
T501	Bench	1	No	1.14	N/A
T501	Bench	1	No	1.34	N/A
T501	Bench	1	No	1.53	N/A
T501	Other	1	No	1.70	N/A
sf-square feet					
lf-linear feet					
cf-cubic feet					

# NEAL SMITH NATIONAL WILDLIFE REFUGE TRAIL LOCATION MAP



 Station Boundary

@ HQ/VC

0 0.5 1 Miles



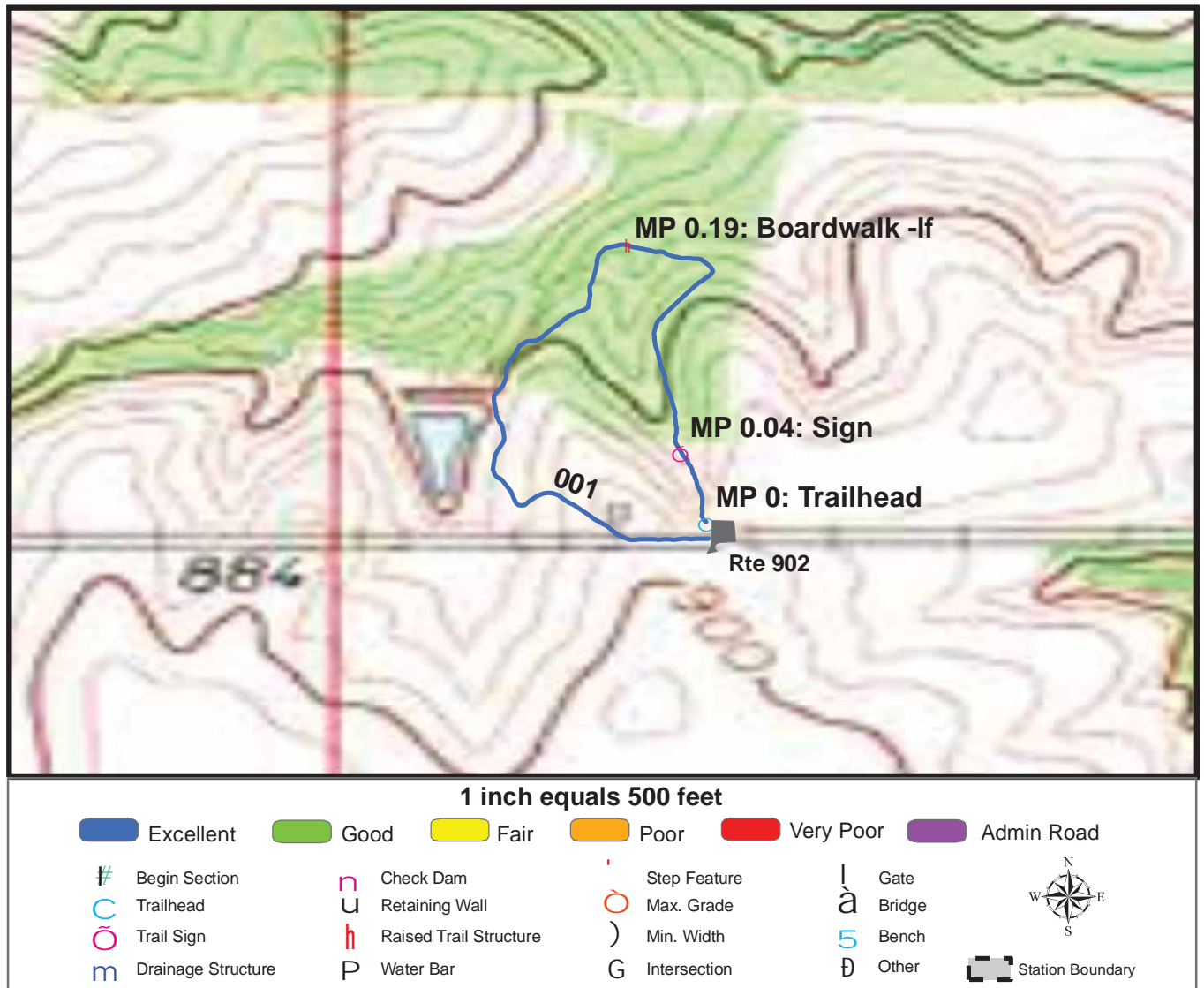
## TRAILS ID

**Station Name: Neal Smith NWR**

**Org. Code: 33670**

Trail #	Trail Name	Surface Type	SAMMS	Trail Mileage	Trail Description (Begin and End point of trail)
T300	Basswood Trail	Mowed	10055404	0.46	From Basswood Trail Parking (Rte 902) to end of trail loop
T400	Savanna Trail	Gravel, Wood Chip	10055405	0.56	From Savanna Study Area Parking (Rte 901) to end of trail loop
T500	Prairie Overlook Trail	Concrete	10014084	0.36	From Prairie Learning Center Parking Area (Rte 900) to end of trail loop
T501	Tallgrass Trail	Asphalt	10014084	1.77	From Prairie Overlook Trail (T501) to end of trail loop

# TRAIL CONDITION



**Trail Name:** Basswood Trail

**Refuge Name:** Neal Smith NWR

**Trail Number:** T300

**Region:** 3

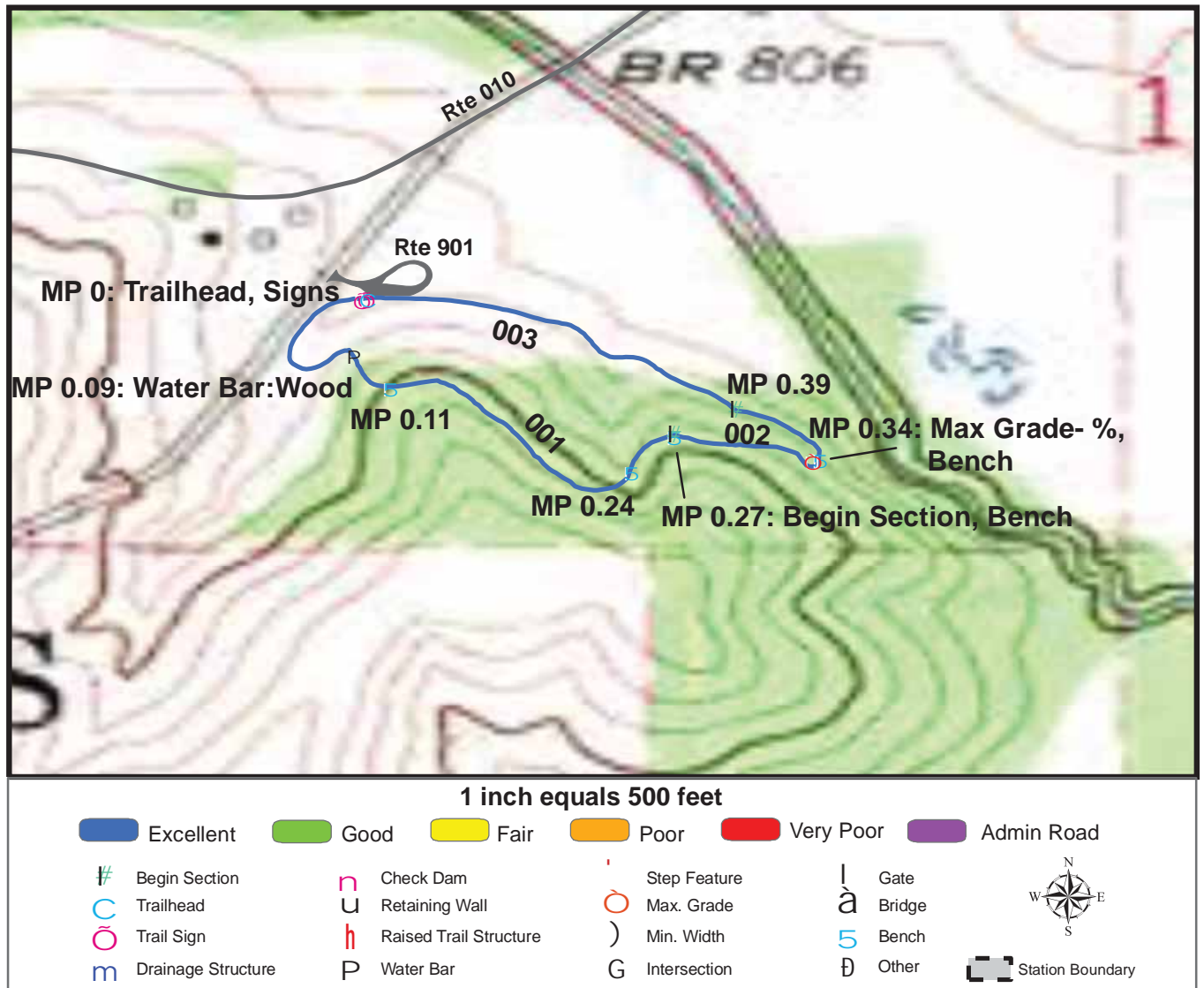
**TOTAL LENGTH:** 0.46 Miles

Section Number	001				
Section Length (miles)	0.46				
SAMMS Number	10055404				
Rating Date	9/13/2006				
<b>Trail Section Information</b>					
Trail Class	TC3				
Surface Type	Mowed				
Surface Firmness	Hard				
Width (inches)	60				
Average Grade (%)	10.4				
Average X-slope (%)	6				
<b>Trail Condition Information</b>					
Deferred Maintenance	\$0				
CRV	\$13600				
FCI	0				
Condition	Excellent				

## Trail Condition TOTALS

Deferred Maintenance	CRV	FCI	Condition
\$0	\$13600	0	Excellent

# TRAIL CONDITION



**Trail Name:** Savanna Trail

**Refuge Name:** Neal Smith NWR

**Trail Number:** T400

**Region:** 3

**TOTAL LENGTH:** 0.56 Miles

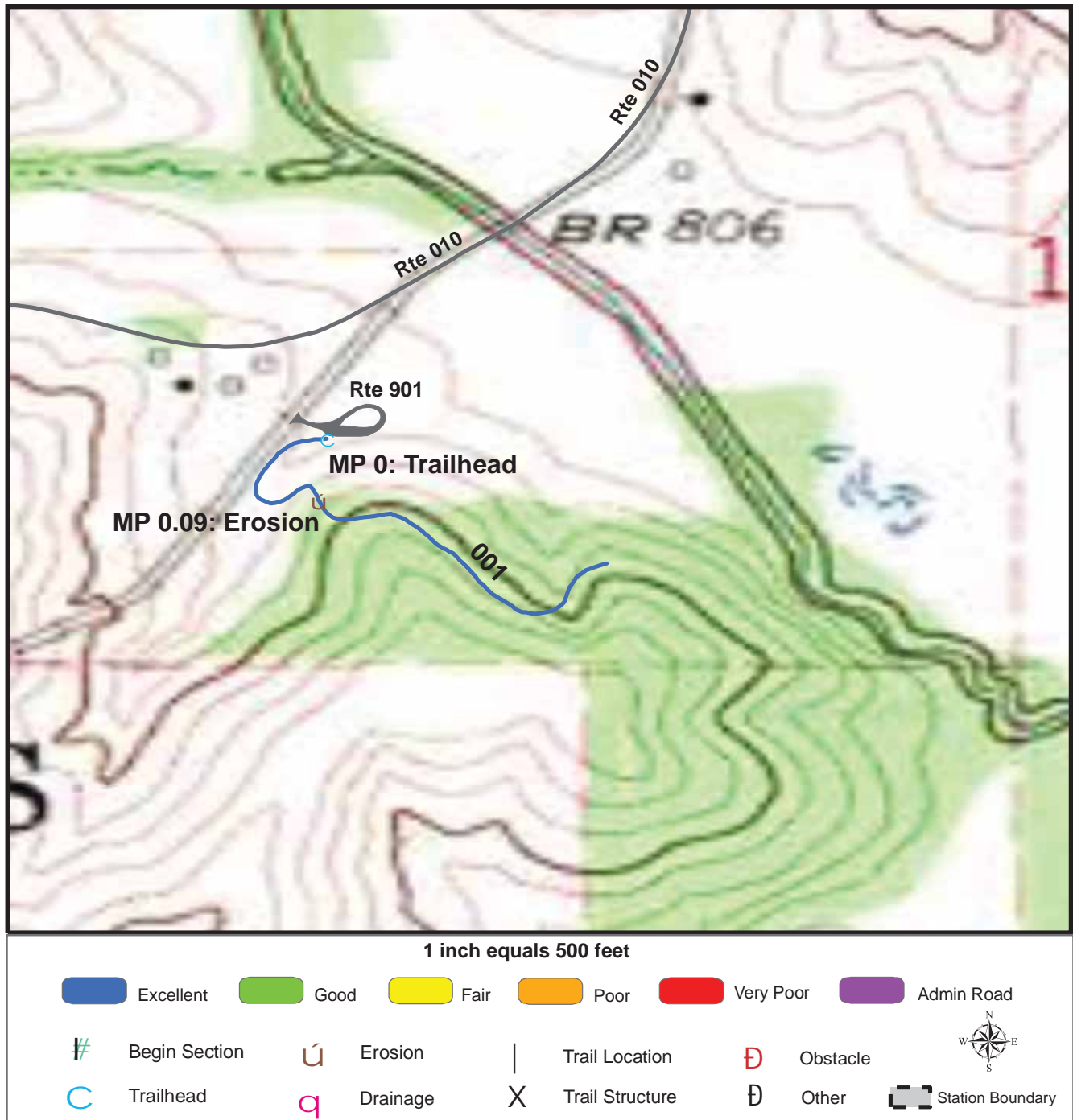
Section Number	001	002	003		
Section Length (miles)	0.27	0.12	0.17		
SAMMS Number	10055405	10055405	10055405		
Rating Date	9/13/2006	9/13/2006	9/13/2006		
<b>Trail Section Information</b>					
Trail Class	TC4	TC4	TC4		
Surface Type	Gravel	Wood Chip	Gravel		
Surface Firmness	Hard	Firm	Hard		
Width (inches)	72	72	72		
Average Grade (%)	3.4	3.4	3.4		
Average X-slope (%)	5.3	5.3	5.3		
<b>Trail Condition Information</b>					
Deferred Maintenance	\$400	\$0	\$0		
CRV	\$39800	\$7700	\$24900		
FCI	0.01	0	0		
Condition	Excellent	Excellent	Excellent		

## Trail Condition TOTALS

Deferred Maintenance	CRV	FCI	Condition
\$400	\$72400	0.006	Excellent



# TRAIL DEFICIENCY



Trail Name: Savanna Trail

Refuge Name: Neal Smith NWR

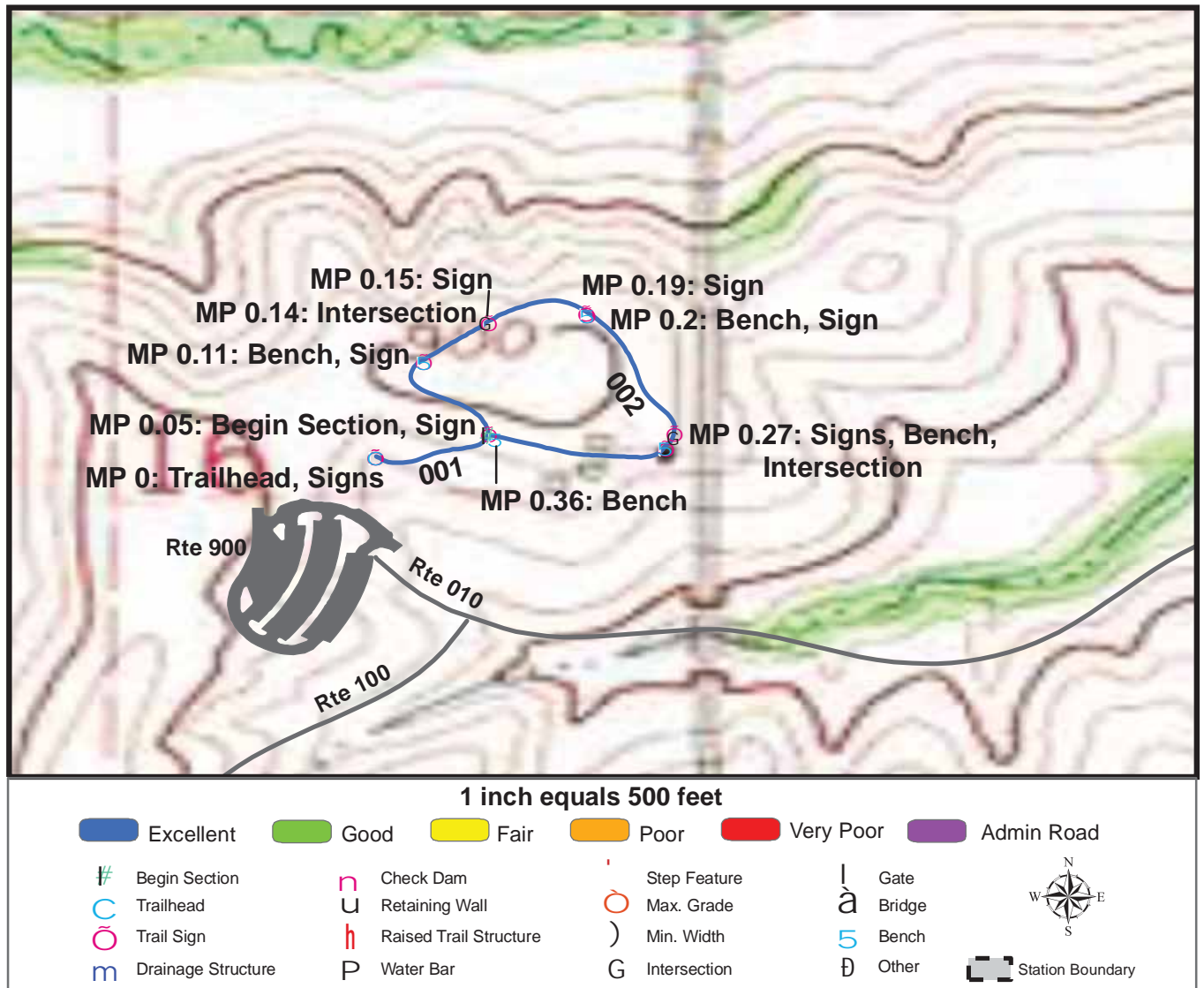
Trail Number: T400

Region: 3

TOTAL LENGTH: 0.56 Miles

Mile Post	0.09	0.09		
Section Number	001	001		
Photo Number	0864	0864		
Deficiency	Erosion	Erosion		
Action	Repair	Repair		
Item	Tread -sf	Water Bar:Wood -each		
Quantity	60	5		
Deferred Maintenance	\$200	\$300		

# TRAIL CONDITION



**Trail Name:** Prairie Overlook Trail

**Refuge Name:** Neal Smith NWR

**Trail Number:** T500

**Region:** 3

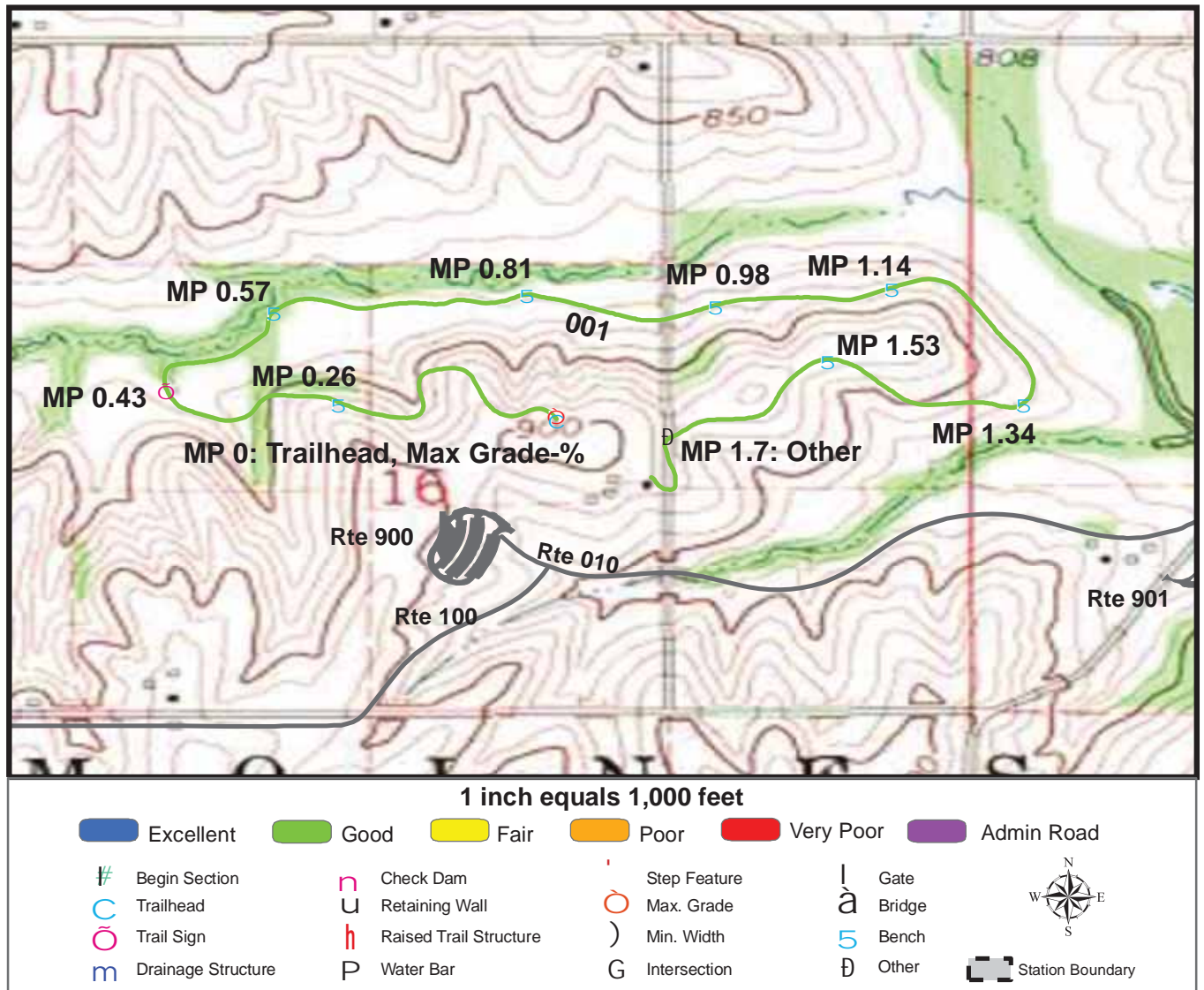
**TOTAL LENGTH:** 0.36 Miles

Section Number	001	002			
Section Length (miles)	0.05	0.31			
SAMMS Number	10014084	10014084			
Rating Date	9/13/2006	9/13/2006			
<b>Trail Section Information</b>					
Trail Class	TC5	TC5			
Surface Type	Concrete	Concrete			
Surface Firmness	Paved	Paved			
Width (inches)	72	72			
Average Grade (%)	3.6	3.6			
Average X-slope (%)	2.5	2.5			
<b>Trail Condition Information</b>					
Deferred Maintenance	\$0	\$0			
CRV	\$10600	\$63400			
FCI	0	0			
Condition	Excellent	Excellent			

## Trail Condition TOTALS

Deferred Maintenance	CRV	FCI	Condition
\$0	\$74000	0	Excellent

# TRAIL CONDITION



**Trail Name:** Tallgrass Trail

**Refuge Name:** Neal Smith NWR

**Trail Number:** T501

**Region:** 3

**TOTAL LENGTH:** 1.77 Miles

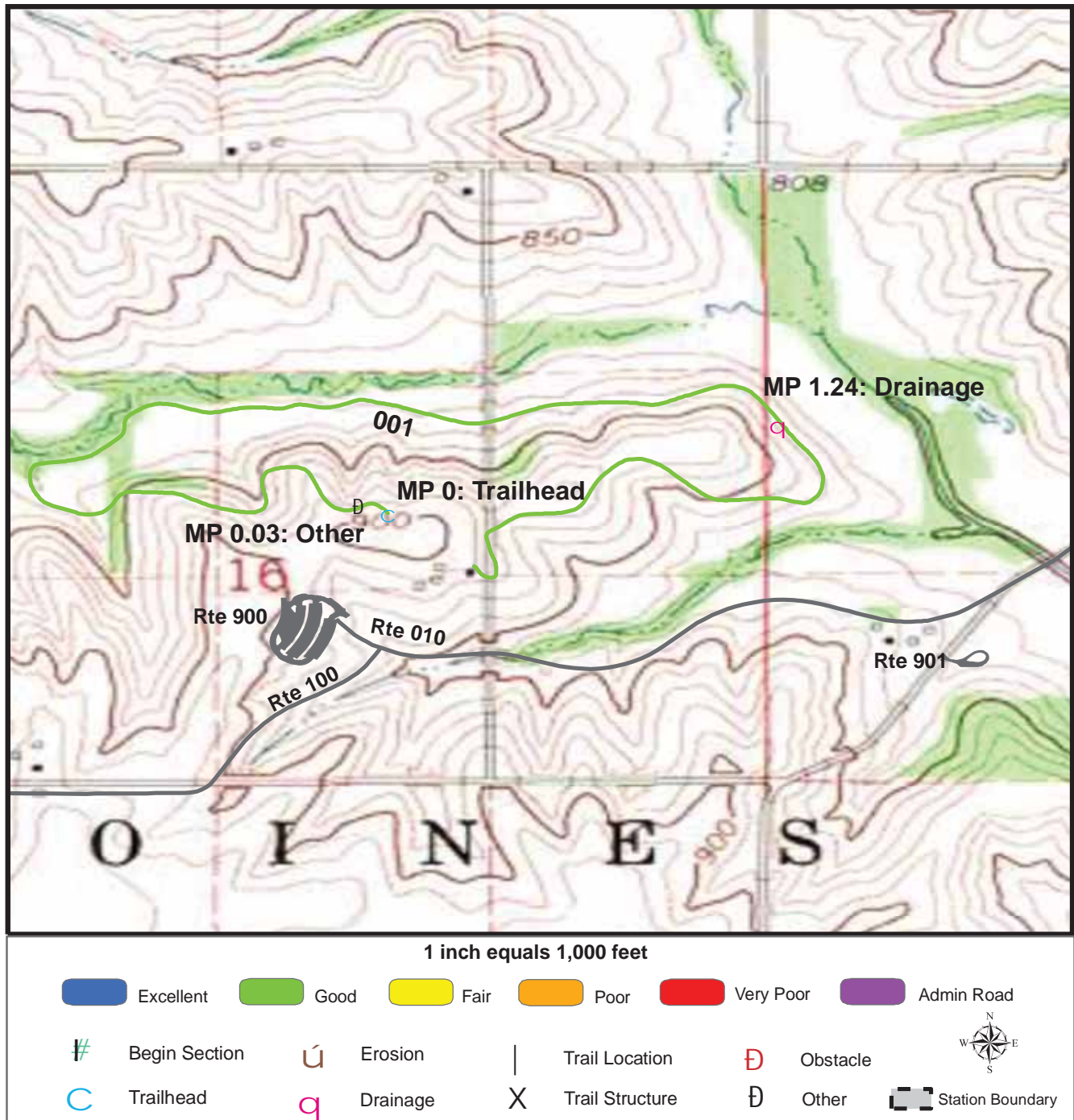
Section Number	001				
Section Length (miles)	1.77				
SAMMS Number	10014084				
Rating Date	9/13/2006				
<b>Trail Section Information</b>					
Trail Class	TC5				
Surface Type	Asphalt				
Surface Firmness	Paved				
Width (inches)	100				
Average Grade (%)	5.2				
Average X-slope (%)	2.1				
<b>Trail Condition Information</b>					
Deferred Maintenance	\$11500				
CRV	\$453100				
FCI	0.025				
Condition	Good				

## Trail Condition TOTALS

Deferred Maintenance	CRV	FCI	Condition
\$11500	\$453100	0.025	Good



# TRAIL DEFICIENCY



Trail Name: Tallgrass Trail

Refuge Name: Neal Smith NWR

Trail Number: T501

Region: 3

TOTAL LENGTH: 1.77 Miles

Mile Post	1.24	0.03		
Section Number	001	001		
Photo Number	0861	0859		
Deficiency	Drainage	Other		
Action	Repair	Repair		
Item	Tread -sf	Tread -sf		
Quantity	16	3895		
Deferred Maintenance	\$100	\$11400		



# PHOTOGRAPHIC SHEET

TRAIL NUMBER: **T300**

STATION: Neal Smith NWR

DATE: 9/13/2006



Photo # 0868 - MP 0.0 - Trailhead

TRAIL NUMBER: **T300**

STATION: Neal Smith NWR

DATE: 9/13/2006



Photo # 0869 - MP 0.04 - Sign (Grouped)



# PHOTOGRAPHIC SHEET

TRAIL NUMBER: **T300**

STATION: Neal Smith NWR

DATE: 9/13/2006



Photo # 0871 - MP 0.19 - Boardwalk

TRAIL NUMBER: **T400**

STATION: Neal Smith NWR

DATE: 9/13/2006



Photo # 0862 - MP 0.0 - Trailhead, Sign



# PHOTOGRAPHIC SHEET

TRAIL NUMBER: **T400**

STATION: Neal Smith NWR

DATE: 9/13/2006



Photo # 0863 - MP 0.0 - Sign

TRAIL NUMBER: **T400**

STATION: Neal Smith NWR

DATE: 9/13/2006



Photo # 0864 - MP 0.09 - Erosion Deficiency



# PHOTOGRAPHIC SHEET

TRAIL NUMBER: **T400**

STATION: Neal Smith NWR

DATE: 9/13/2006



Photo # 0865 - MP 0.27 - Begin Section 002

TRAIL NUMBER: **T400**

STATION: Neal Smith NWR

DATE: 9/13/2006



Photo # 0867 - MP 0.39 - Begin Section 003

# PHOTOGRAPHIC SHEET

TRAIL NUMBER: **T500**

STATION: Neal Smith NWR

DATE: 9/13/2006



Photo # 0847 - MP 0.0 - Trailhead

TRAIL NUMBER: **T500**

STATION: Neal Smith NWR

DATE: 9/13/2006



Photo # 0848 - MP 0.0 - Sign



# PHOTOGRAPHIC SHEET

TRAIL NUMBER: **T500**

STATION: Neal Smith NWR

DATE: 9/13/2006



Photo # 0849 - MP 0.0 - Sign

TRAIL NUMBER: **T500**

STATION: Neal Smith NWR

DATE: 9/13/2006



Photo # 0850 - MP 0.05 - Begin Section 002

# PHOTOGRAPHIC SHEET

TRAIL NUMBER: **T500**

STATION: Neal Smith NWR

DATE: 9/13/2006



Photo # 0857 - MP 0.05 - Sign

TRAIL NUMBER: **T500**

STATION: Neal Smith NWR

DATE: 9/13/2006



Photo # 0856 - MP 0.11 - Sign



# PHOTOGRAPHIC SHEET

TRAIL NUMBER: **T500**

STATION: Neal Smith NWR

DATE: 9/13/2006



Photo # 0855 - MP 0.15 - Sign

TRAIL NUMBER: **T500**

STATION: Neal Smith NWR

DATE: 9/13/2006



Photo # 0853 - MP 0.19 - Sign



# PHOTOGRAPHIC SHEET

TRAIL NUMBER: **T500**

STATION: Neal Smith NWR

DATE: 9/13/2006



Photo # 0854 - MP 0.2 - Sign

TRAIL NUMBER: **T500**

STATION: Neal Smith NWR

DATE: 9/13/2006



Photo # 0851 - MP 0.27 - Sign

# PHOTOGRAPHIC SHEET

TRAIL NUMBER: **T500**

STATION: Neal Smith NWR

DATE: 9/13/2006



Photo # 0852 - MP 0.27 - Sign

TRAIL NUMBER: **T501**

STATION: Neal Smith NWR

DATE: 9/13/2006



Photo # 0858 - MP 0.0 - Trailhead



# PHOTOGRAPHIC SHEET

TRAIL NUMBER: **T501**

STATION: Neal Smith NWR

DATE: 9/13/2006



Photo # 0859 - MP 0.03 - Other Deficiency

TRAIL NUMBER: **T501**

STATION: Neal Smith NWR

DATE: 9/13/2006



Photo # 0860 - MP 0.43 - Sign



# PHOTOGRAPHIC SHEET

TRAIL NUMBER: **T501**

STATION: Neal Smith NWR

DATE: 9/13/2006



Photo # 0861 - MP 1.24 - Drainage Deficiency

# **The Trail Inventory of Port Louisa National Wildlife Refuge Wapello, Iowa**



**Prepared By:  
Federal Highway Administration  
Central Federal Lands Highway Division  
September 2006**



# Port Louisa NWR

## Trail and Trail Feature Summaries

### Trail Miles and Percentages by Surface Type and Condition

Trail Surface Type	Mileage by Trail Condition												Total Miles
	Excellent		Good		Fair		Poor		Very Poor		Not Rated*		
	MILES	%	MILES	%	MILES	%	MILES	%	MILES	%	MILES	%	
Native	0.48	24%	0.16	8%		0%		0%		0%		0%	0.64
Gravel		0%		0%		0%		0%		0%		0%	0.00
Asphalt		0%		0%		0%		0%		0%		0%	0.00
Concrete		0%		0%		0%		0%		0%		0%	0.00
Turnpike		0%		0%		0%		0%		0%		0%	0.00
Boardwalk		0%		0%		0%		0%		0%		0%	0.00
Puncheon		0%		0%		0%		0%		0%		0%	0.00
Woodchips		0%		0%		0%		0%		0%		0%	0.00
Mowed		0%		0%		0%		0%		0%		0%	0.00
Admin Road		0%		0%		0%		0%		0%	1.38	68%	1.38
Other		0%		0%		0%		0%		0%		0%	0.00
Totals	0.48	24%	0.16	8%	0.00	0%	0.00	0%	0.00	0%	1.38	68%	2.02

### Trail Miles and Percentages by Trail Classification and Condition

Trail Classification	Mileage by Trail Condition												Total Miles
	Excellent		Good		Fair		Poor		Very Poor		Not Rated*		
	MILES	%	MILES	%	MILES	%	MILES	%	MILES	%	MILES	%	
TC1		0%		0%		0%		0%		0%		0%	0.00
TC2		0%		0%		0%		0%		0%		0%	0.00
TC3	0.48	24%	0.16	8%		0%		0%		0%	1.38	68%	2.02
TC4		0%		0%		0%		0%		0%		0%	0.00
TC5		0%		0%		0%		0%		0%		0%	0.00
Totals	0.48	24%	0.16	8%	0.00	0%	0.00	0%	0.00	0%	1.38	68%	2.02

\* Admin Roads are included in the inventory but are not rated for condition.

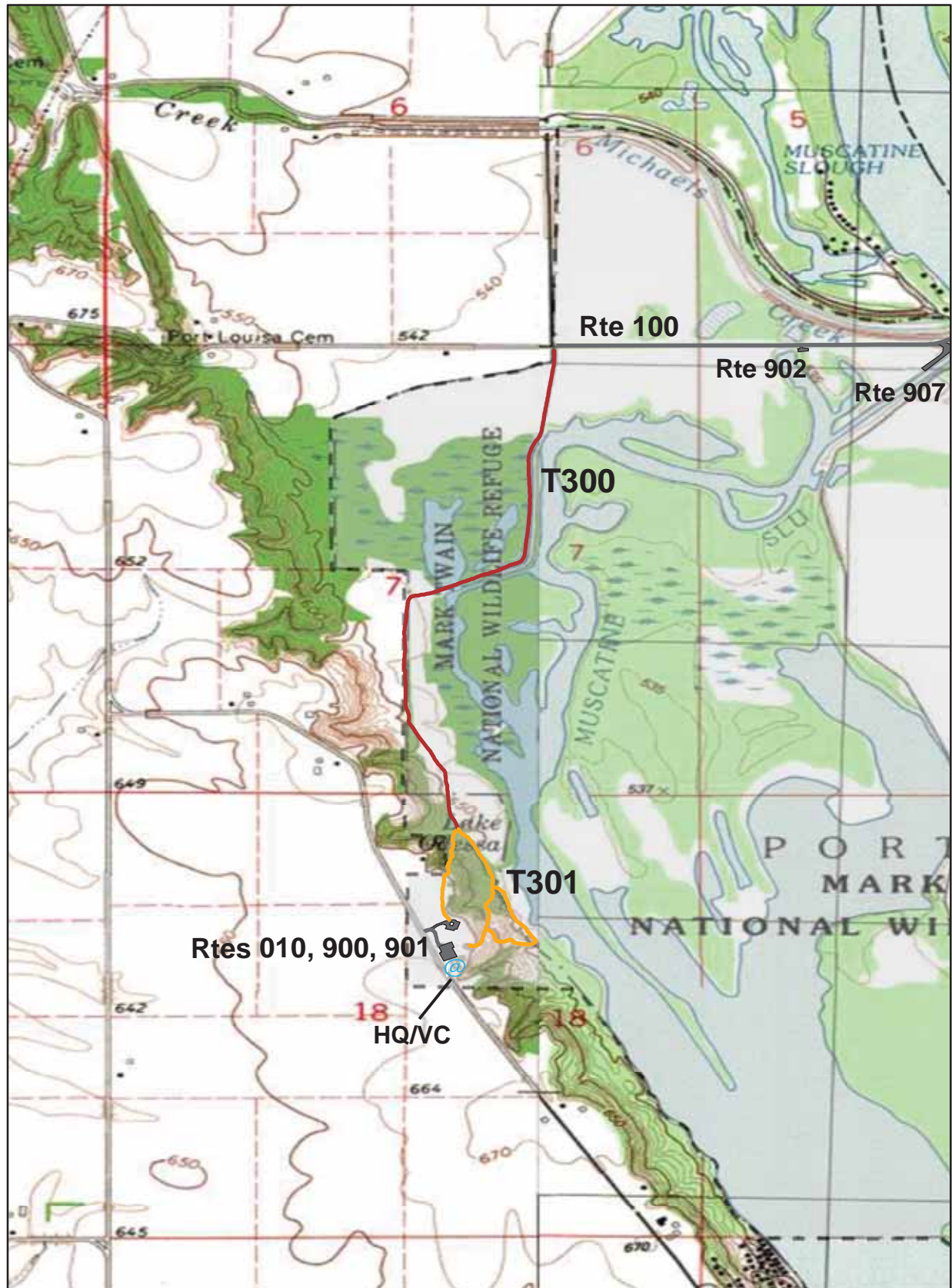


## Trail Features

Trail Number	Feature Type	Quantity	Grouped Feature	Milepost	Photo
T300	Sign	1	No	0.00	0906
T300	Water Control Struc	1	No	0.63	N/A
T301	Sign	1	No	0.00	0915
T301	Sign	1	No	0.06	0914
T301	Water Bar:Wood -each	10	No	0.09	N/A
T301	Culvert -lf	40	No	0.11	N/A
T301	Step: Log -each	18	No	0.12	N/A
T301	Sign	1	No	0.32	0913
T301	Step: Log -each	1	No	0.32	N/A
T301	Bridge -sf	85	No	0.36	0920
T301	Bench	1	No	0.37	N/A
T301	Sign	1	No	0.37	0921
T301	Step: Log -each	19	No	0.37	N/A
T301	Bench	1	No	0.43	N/A


**sf-square feet**  
**lf-linear feet**  
**cf-cubic feet**

# PORT LOUISA NATIONAL WILDLIFE REFUGE TRAIL LOCATION MAP



 Station Boundary

 HQ/VC

 Miles  
0 0.3 0.6

## TRAILS ID

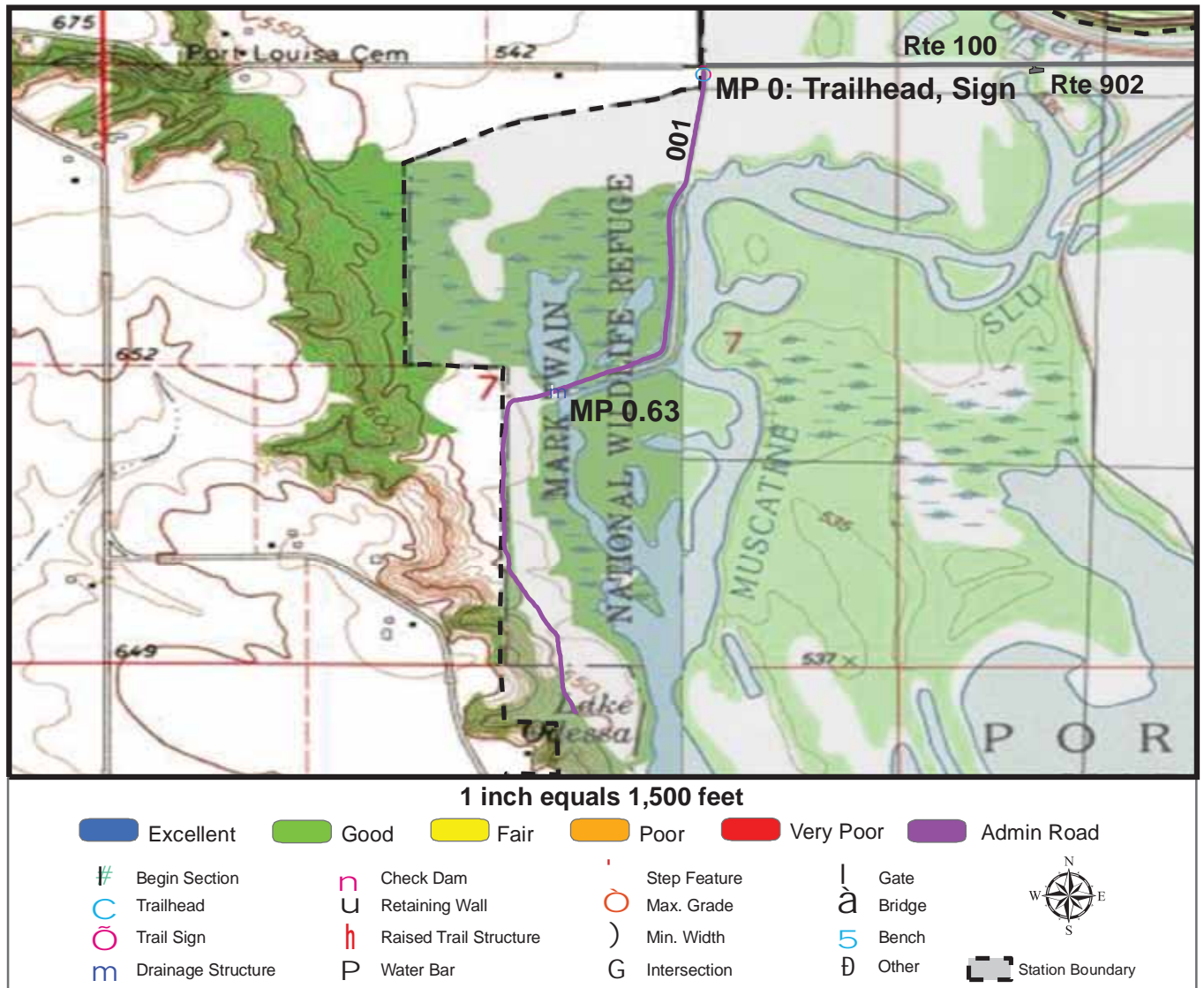
**Station Name: Port Louisa NWR**

**Org. Code: 33630**

Trail #	Trail Name	Surface Type	SAMMS	Trail Mileage	Trail Description (Begin and End point of trail)
T300	Muscatine Slough	Admin Road	10013833	1.23	From Port Louisa Road (Rte 100) to Interpretive Trail (T301)
T301	Interpretive Trail	Native, Admin Road	10013834	0.79	From Headquarters to Trail Parking Area (Rte 901)



# TRAIL CONDITION



**Trail Name:** Muscatine Slough Trail

**Refuge Name:** Port Louisa NWR

**Trail Number:** T300

**Region:** 3

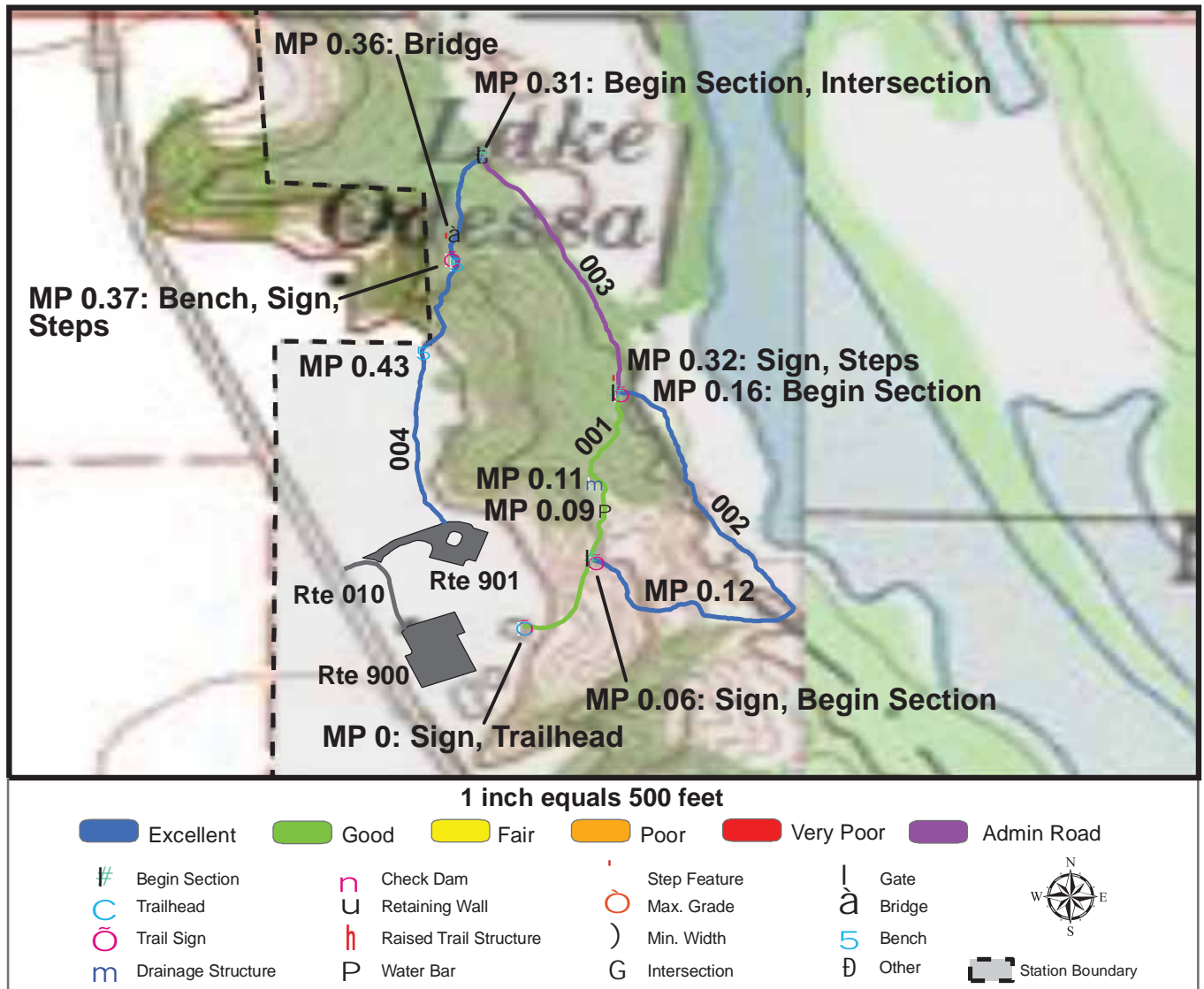
**TOTAL LENGTH:** 1.23 Miles

Section Number	001				
Section Length (miles)	1.23				
SAMMS Number	10013833				
Rating Date	9/15/2006				
<b>Trail Section Information</b>					
Trail Class	TC3				
Surface Type	Admin Road				
Surface Firmness	Firm				
Width (inches)	120				
Average Grade (%)	0				
Average X-slope (%)	0				
<b>Trail Condition Information</b>					
Deferred Maintenance	\$0				
CRV	\$0				
FCI	0				
Condition	Not Rated				

## Trail Condition TOTALS

Deferred Maintenance	CRV	FCI	Condition
\$0	\$0	0	Not Rated

## TRAIL CONDITION



**Trail Name:** Interpretive Trail

**Refuge Name:** Port Louisa NWR

**Trail Number:** T301

**Region:** 3

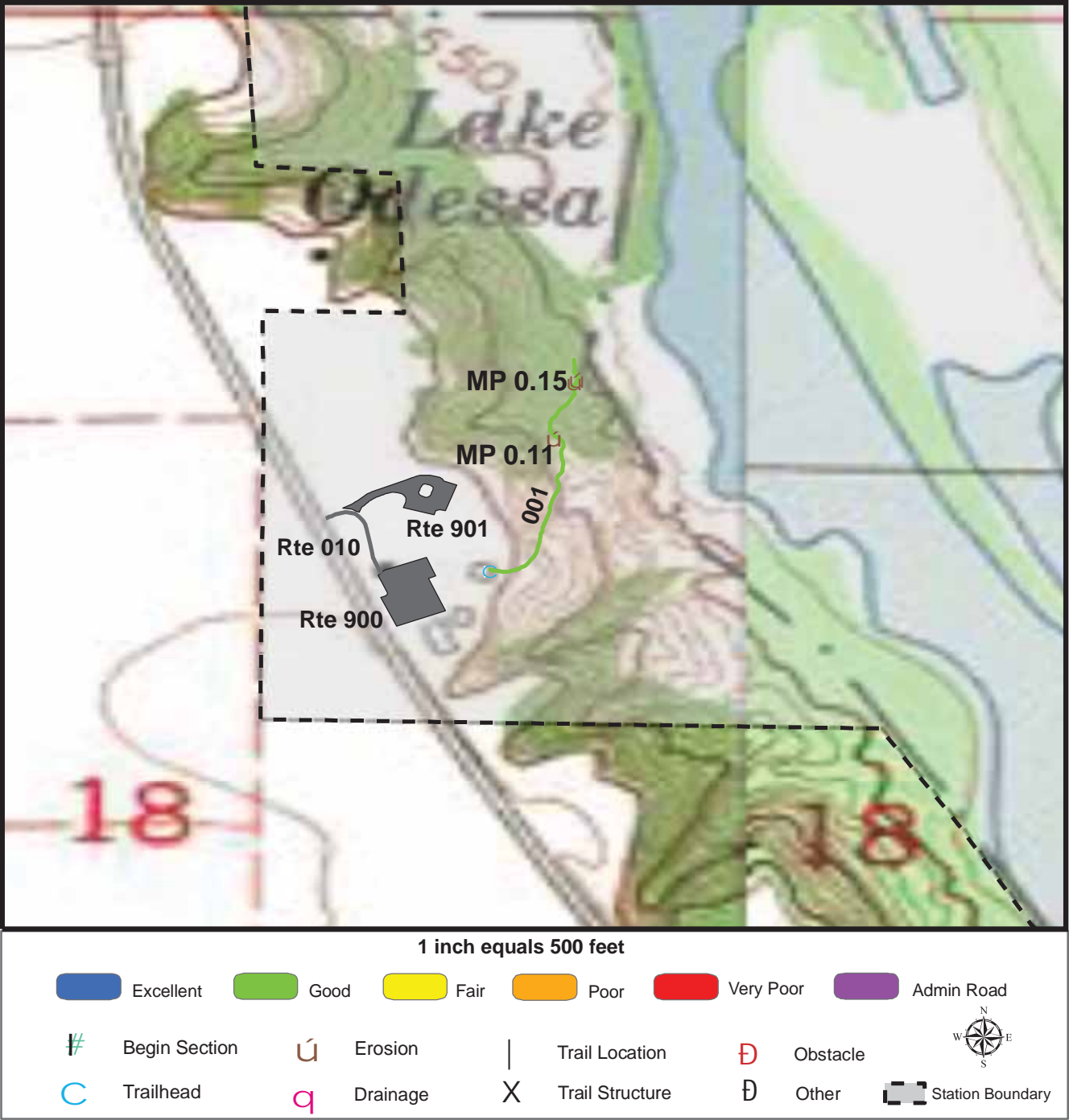
**TOTAL LENGTH:** 0.79 Miles

Section Number	001	002	003	004	
Section Length (miles)	0.16	0.26	0.15	0.22	
SAMMS Number	10013834	10013834	10013834	10013834	
Rating Date	9/15/2006	9/15/2006	9/15/2006	9/15/2006	
<b>Trail Section Information</b>					
Trail Class	TC3	TC3	TC3	TC3	
Surface Type	Native	Native	Admin Road	Native	
Surface Firmness	Firm	Firm	Firm	Firm	
Width (inches)	72	48	120	48	
Average Grade (%)	9.7	9.7	9.7	9.7	
Average X-slope (%)	3.6	3.6	3.6	3.6	
<b>Trail Condition Information</b>					
Deferred Maintenance	\$845	\$0	\$0	\$0	
CRV	\$25297	\$25015	\$0	\$25868	
FCI	0.033	0	0	0	
Condition	Good	Excellent	Not Rated	Excellent	

### Trail Condition TOTALS

Deferred Maintenance	CRV	FCI	Condition
\$845	\$76180	0.011	Good

# TRAIL DEFICIENCY



Trail Name:	Interpretive Trail				Refuge Name:	Port Louisa NWR			
Trail Number:	T301				Region:	3			
					TOTAL LENGTH:	0.79 Miles			
Mile Post	0.11	0.15	0.11	0.15					
Section Number	001	001	001	001					
Photo Number	0917	0918	0917	0918					
Deficiency	Erosion	Erosion	Erosion	Erosion					
Action	Repair	Repair	Build/Add	Build/Add					
Item	Tread -sf	Tread -sf	Water Bar:Wood -each	Water Bar:Wood -each					
Quantity	100	60	2	2					
Deferred Maintenance	\$200	\$200	\$200	\$200					



# PHOTOGRAPHIC SHEET

TRAIL NUMBER: **T300**

STATION: Port Louisa NWR

DATE: 9/15/2006



Photo # 0907 - MP 0.0 - Trailhead

TRAIL NUMBER: **T300**

STATION: Port Louisa NWR

DATE: 9/15/2006



Photo # 0906 - MP 0.0 - Sign



# PHOTOGRAPHIC SHEET

TRAIL NUMBER: **T301**

STATION: Port Louisa NWR

DATE: 9/15/2006



Photo # 0916 - MP 0.0 - Trailhead

TRAIL NUMBER: **T301**

STATION: Port Louisa NWR

DATE: 9/15/2006



Photo # 0915 - MP 0.0 - Sign



# PHOTOGRAPHIC SHEET

TRAIL NUMBER: **T301**

STATION: Port Louisa NWR

DATE: 9/15/2006



Photo # 0914 - MP 0.06 - Sign

TRAIL NUMBER: **T301**

STATION: Port Louisa NWR

DATE: 9/15/2006



Photo # 0917 - MP 0.11 - Erosion Deficiency



# PHOTOGRAPHIC SHEET

TRAIL NUMBER: **T301**

STATION: Port Louisa NWR

DATE: 9/15/2006



Photo # 0918 - MP 0.15 - Erosion Deficiency

TRAIL NUMBER: **T301**

STATION: Port Louisa NWR

DATE: 9/15/2006



Photo # 0919 - MP 0.31 - Begin Section 004



# PHOTOGRAPHIC SHEET

TRAIL NUMBER: **T301**

STATION: Port Louisa NWR

DATE: 9/15/2006



Photo # 0913 - MP 0.32 - Sign

TRAIL NUMBER: **T301**

STATION: Port Louisa NWR

DATE: 9/15/2006



Photo # 0920 - MP 0.36 - Bridge

# **The Trail Inventory of Upper Mississippi National Wildlife & Fish Refuge – McGregor District McGregor, Iowa**



**Prepared By:  
Federal Highway Administration  
Central Federal Lands Highway Division  
September 2006**





# Upper Mississippi NW&FR - McGregor District

## Trail and Trail Feature Summaries

### Trail Miles and Percentages by Surface Type and Condition

Trail Surface Type	Mileage by Trail Condition												Total Miles
	Excellent		Good		Fair		Poor		Very Poor		Not Rated*		
	MILES	%	MILES	%	MILES	%	MILES	%	MILES	%	MILES	%	
Native	0.65	51%		0%		0%		0%		0%		0%	0.65
Gravel		0%		0%		0%		0%		0%		0%	0.00
Asphalt		0%		0%		0%		0%		0%		0%	0.00
Concrete		0%		0%		0%		0%		0%		0%	0.00
Turnpike		0%		0%		0%		0%		0%		0%	0.00
Boardwalk		0%		0%		0%		0%		0%		0%	0.00
Puncheon		0%		0%		0%		0%		0%		0%	0.00
Woodchips		0%		0%		0%		0%		0%		0%	0.00
Mowed	0.63	49%		0%		0%		0%		0%		0%	0.63
Admin Road		0%		0%		0%		0%		0%		0%	0.00
Other		0%		0%		0%		0%		0%		0%	0.00
Totals	1.28	100%	0.00	0%	0.00	0%	0.00	0%	0.00	0%	0.00	0%	1.28

### Trail Miles and Percentages by Trail Classification and Condition

Trail Classificatio n	Mileage by Trail Condition												Total Miles
	Excellent		Good		Fair		Poor		Very Poor		Not Rated*		
	MILES	%	MILES	%	MILES	%	MILES	%	MILES	%	MILES	%	
TC1		0%		0%		0%		0%		0%		0%	0.00
TC2		0%		0%		0%		0%		0%		0%	0.00
TC3	1.28	100%		0%		0%		0%		0%		0%	1.28
TC4		0%		0%		0%		0%		0%		0%	0.00
TC5		0%		0%		0%		0%		0%		0%	0.00
Totals	1.28	100%	0.00	0%	0.00	0%	0.00	0%	0.00	0%	0.00	0%	1.28

\* Admin Roads are included in the inventory but are not rated for condition.

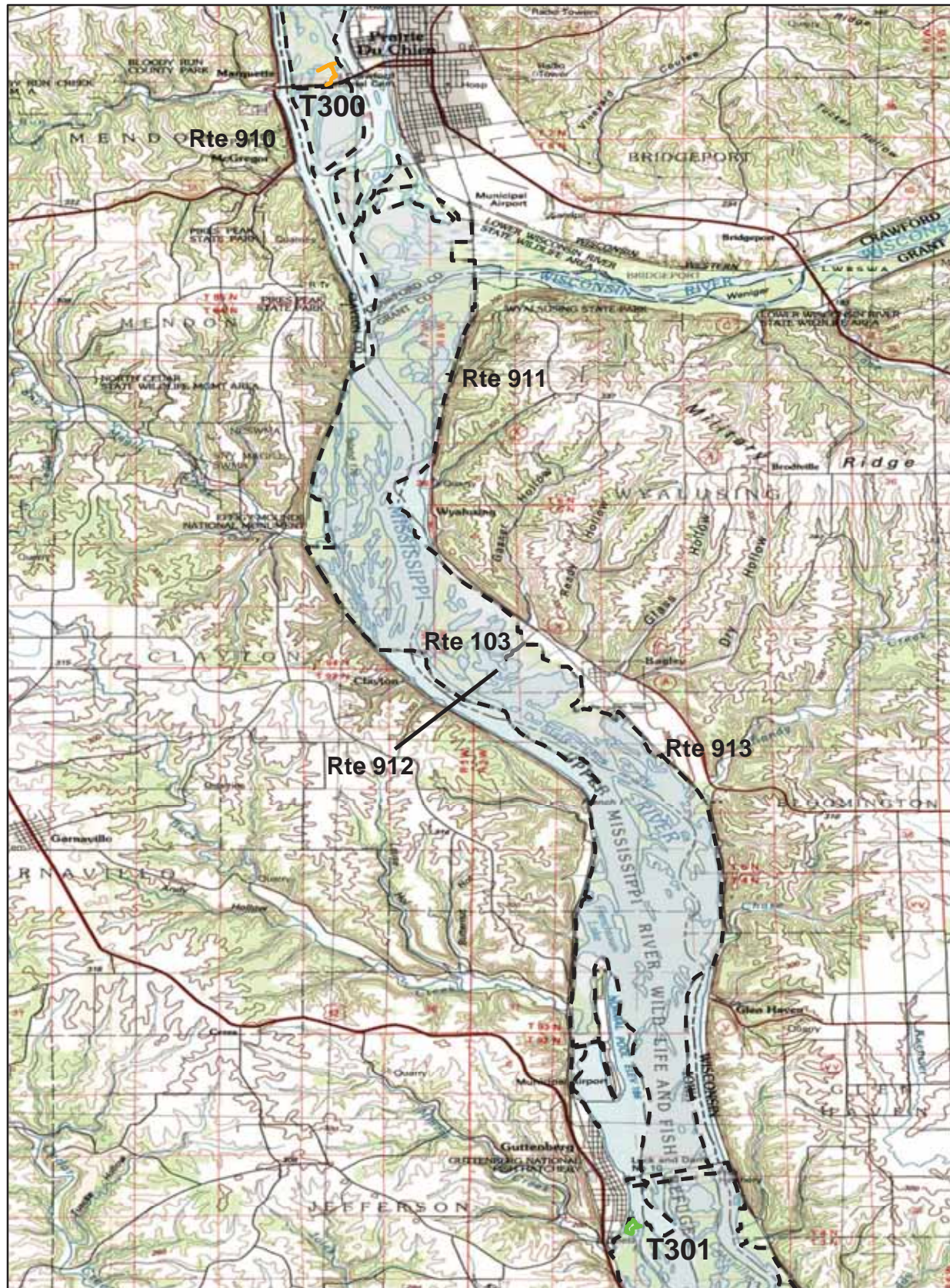
## Trail Features

Trail Number	Feature Type	Quantity	Grouped Feature	Milepost	Photo
T300	Sign	4	No	0.00	0872
T300	Sign	3	No	0.01	0873
T300	Bench	1	No	0.11	N/A
T300	Sign	7	Yes	0.17	0874
T300	Bench	1	No	0.32	N/A
T300	Sign	1	No	0.40	0879
T300	Bench	1	No	0.47	N/A
T300	Lookout/Ob Deck	1	No	0.57	N/A
T300	Sign	1	No	0.57	0881
T301	Sign	1	No	0.01	0891
T301	Sign	9	Yes	0.03	0892

**sf-square feet**  
**lf-linear feet**  
**cf-cubic feet**

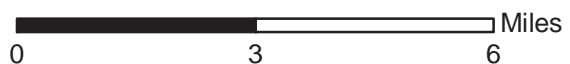


# UPPER MISSISSIPPI NATIONAL WILDLIFE & FISH REFUGE - MCGREGOR DISTRICT TRAIL LOCATION MAP



 Station Boundary

@ HQ/VC

 Miles  
0 3 6

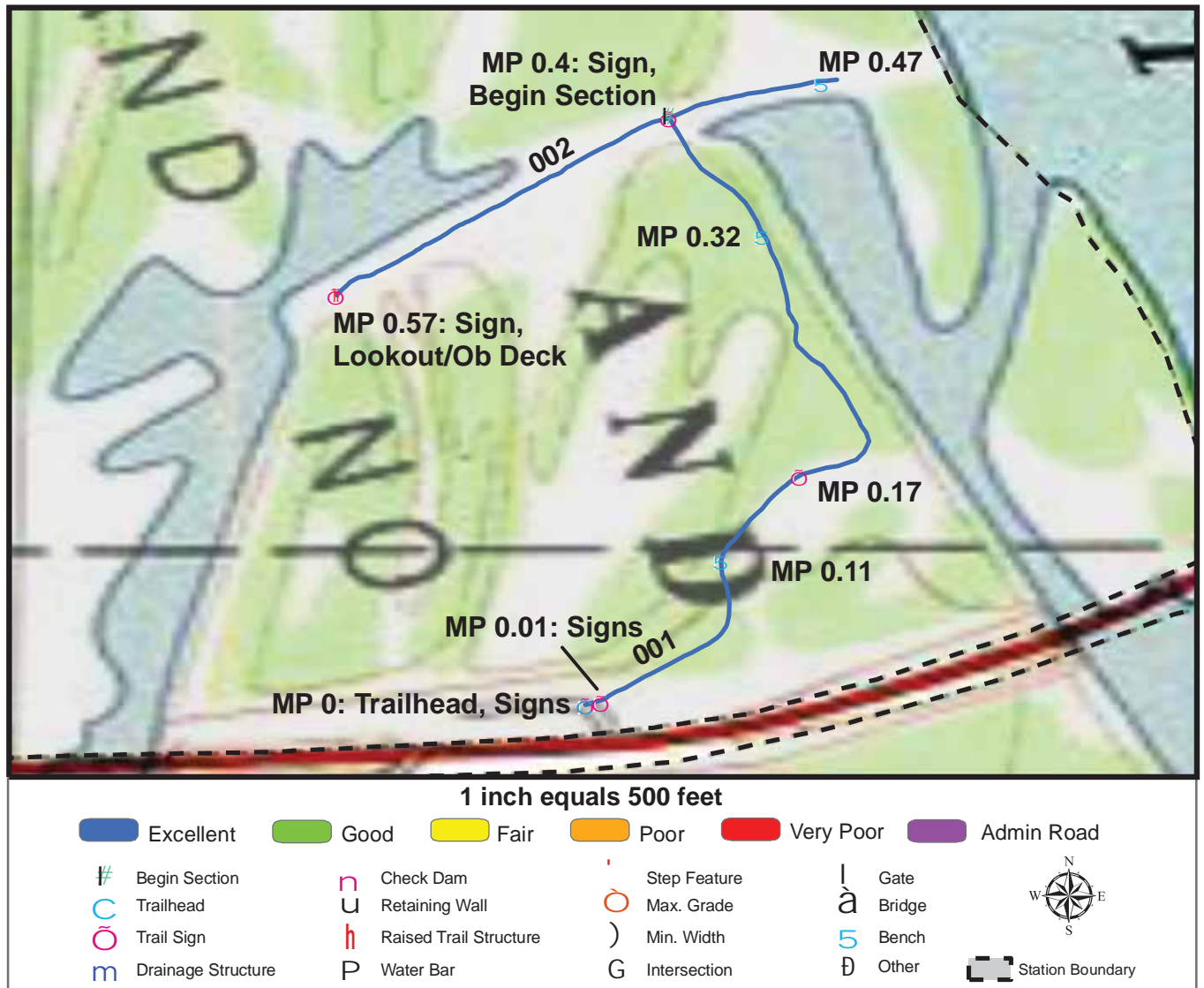
## TRAILS ID

**Station Name: Upper Mississippi River NW&FR - McGregor District      Org. Code: 32595**

Trail #	Trail Name	Surface Type	SAMMS	Trail Mileage	Trail Description (Begin and End point of trail)
T300	Sturgeon Slough Hiking Trail	Native	10012591	0.65	From Trailhead to end of loop
T301	Guttenburg Boat Launch Trail	Mowed	N/A	0.63	From Trailhead to Sec 001



# TRAIL CONDITION



**Trail Name:** Sturgeon Slough Hiking Trail

**Refuge Name:** Upper Mississippi NW&FR - McGregor District

**Trail Number:** T300

**Region:** 3

**TOTAL LENGTH:** 0.65 Miles

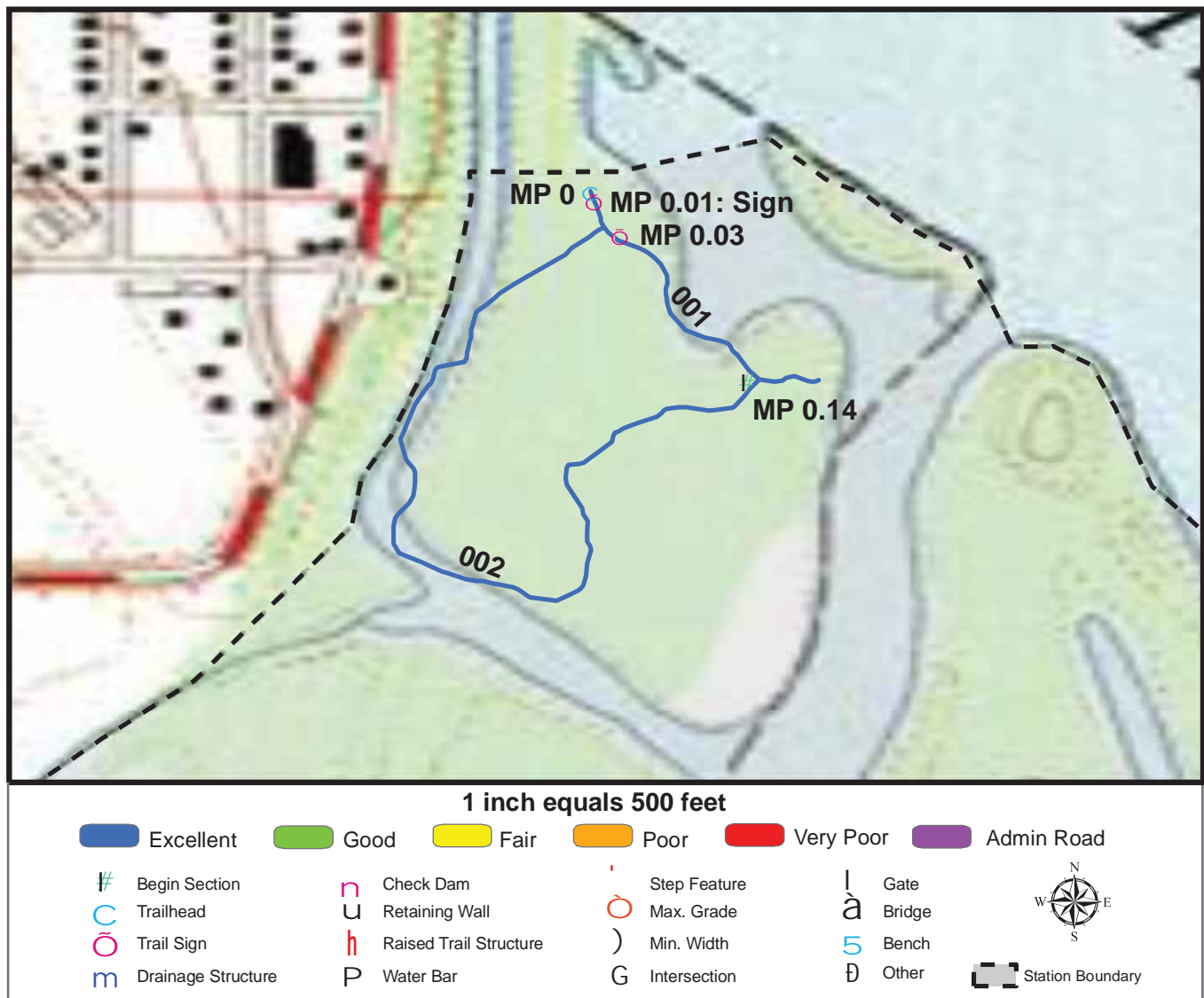
Section Number	001	002			
Section Length (miles)	0.48	0.17			
SAMMS Number	10012591	10012591			
Rating Date	9/14/2006	9/14/2006			
<b>Trail Section Information</b>					
Trail Class	TC3	TC3			
Surface Type	Native	Native			
Surface Firmness	Firm	Firm			
Width (inches)	48	48			
Average Grade (%)	2.9	2.9			
Average X-slope (%)	4.1	4.1			
<b>Trail Condition Information</b>					
Deferred Maintenance	\$0	\$0			
CRV	\$50200	\$17800			
FCI	0	0			
Condition	Excellent	Excellent			

## Trail Condition TOTALS

Deferred Maintenance	CRV	FCI	Condition
\$0	\$68000	0	Excellent



TRAIL CONDITION



Trail Name: Guttenberg Boat Launch Trail

Refuge Name: Upper Mississippi NW&FR - McGregor District

Trail Number: T301

Region: 3

TOTAL LENGTH: 0.63 Miles

Section Number	001	002			
Section Length (miles)	0.16	0.47			
SAMMS Number	N/A	N/A			
Rating Date	9/14/2006	9/14/2006			
<b>Trail Section Information</b>					
Trail Class	TC3	TC3			
Surface Type	Mowed	Mowed			
Surface Firmness	Firm	Firm			
Width (inches)	84	84			
Average Grade (%)	2.2	2.2			
Average X-slope (%)	1.3	1.3			
<b>Trail Condition Information</b>					
Deferred Maintenance	\$0	\$0			
CRV	\$7300	\$21700			
FCI	0	0			
Condition	Excellent	Excellent			

Trail Condition TOTALS

Deferred Maintenance	CRV	FCI	Condition
\$0	\$29000	0	Excellent

# PHOTOGRAPHIC SHEET

TRAIL NUMBER: **T300**

STATION: Upper Mississippi NW&FR - McGregor District

DATE: 9/14/2006



Photo # 0873 - MP 0.0 - Trailhead, Signs

TRAIL NUMBER: **T300**

STATION: Upper Mississippi NW&FR - McGregor District

DATE: 9/14/2006



Photo # 0872 - MP 0.0 - Signs



# PHOTOGRAPHIC SHEET

TRAIL NUMBER: **T300**

STATION: Upper Mississippi NW&FR - McGregor District

DATE: 9/14/2006



Photo # 0874 - MP 0.17 - Sign (Grouped feature)

TRAIL NUMBER: **T300**

STATION: Upper Mississippi NW&FR - McGregor District

DATE: 9/14/2006



Photo # 0879 - MP 0.4 - Sign



# PHOTOGRAPHIC SHEET

TRAIL NUMBER: **T300**

STATION: Upper Mississippi NW&FR - McGregor District

DATE: 9/14/2006



Photo # 0880 - MP 0.4 - Begin Section 002

TRAIL NUMBER: **T300**

STATION: Upper Mississippi NW&FR - McGregor District

DATE: 9/14/2006



Photo # 0881 - MP 0.57 - Sign



# PHOTOGRAPHIC SHEET

TRAIL NUMBER: **T301**

STATION: Upper Mississippi NW&FR - McGregor District

DATE: 9/14/2006



Photo # 0890 - MP 0.0 - Trailhead

TRAIL NUMBER: **T301**

STATION: Upper Mississippi NW&FR - McGregor District

DATE: 9/14/2006



Photo # 0891 - MP 0.01 - Sign

# PHOTOGRAPHIC SHEET

TRAIL NUMBER: **T301**

STATION: Upper Mississippi NW&FR - McGregor District

DATE: 9/14/2006



Photo # 0892 - MP 0.03 - Sign (Grouped feature)

TRAIL NUMBER: **T301**

STATION: Upper Mississippi NW&FR - McGregor District

DATE: 9/14/2006



Photo # 0893 - MP 0.14 - Begin Section 002



# APPENDIX

## Glossary of Terms and Abbreviations

<b>Acc Info</b>	Accessibility information available at trailhead.
<b>Action</b>	Action required to correct deficiency.
<b>Admin Road</b>	Administration Road. Admin Roads signed and advertised as trails are included in the trail inventory but a condition assessment is NOT done.
<b>Alt SAMMS</b>	Asset number of Alternate Facility Type.
<b>Alt Type</b>	Alternate Facility Type. Trail lies on a feature such as a levee, dam, administrative road or bridge, which has a separate SAMMS number.
<b>AvgGrade</b>	The average grade of the trail (%). The average of five measurements for trails less than two miles and ten measurements for trails equal to or greater than 2 miles.
<b>AvgSlope</b>	The average cross-slope of the trail (%). The average of five measurements for trails less than two miles and ten measurements for trails equal to or greater than 2 miles.
<b>Check Dam</b>	A small dam constructed across a drainage ditch, swale, or channel to lower the speed of concentrated flows.
<b>Condition</b>	Subjective rating of trail based on Facility Condition Index (FCI): FCI $\leq$ .01 = Excellent FCI .011 - .05 = Good FCI .051 - .10 = Fair FCI .11 - .20 = Poor FCI $>$ .20 = Very Poor
<b>Crib Wall</b>	Retaining wall.
<b>Current Replacement Value (CRV)</b>	The value of an asset determined by the estimated cost of replacing it.
<b>Def type</b>	Deficiency Type: Trail Structure, Drainage, Erosion, Obstacle, Trail Location, Other.

<b>Deferred Maintenance (DM)</b>	Maintenance that was not performed when scheduled.
<b>Elem ID</b>	Unique identifier for each trail section: Org Code-Trail Number-Section Number.
<b>Facility Condition Index (FCI)</b>	DM/CRV
<b>Grouped Features</b>	Grouped features include non-unique signs (mileposts, interpretive signs, species identification, etc.), water bars, check dams, steps, drain and drainage dips. For any given grouped feature, a GPS point and photo are taken for the first occurrence only and the total number of features in the group are entered into the “quantity” field of the data dictionary. CRV for grouped features are included in whatever trail section the GPS point was taken.
<b>Info Type</b>	Type of accessibility information available at trailhead: brochure, sign or other.
<b>Item</b>	Item on which the “Action” (see above) will be performed.
<b>Manage_Use</b>	Managed use of the trail: HIKE, BIKE, NSPC (non-specified), PACK, POR (portage), SNOWSHOE, XSKI (cross-country ski), OTHER.
<b>Max Grade</b>	Maximum grade (in percent) of trail. Only collected for Trail Classes 4 and 5 and when > 10%.
<b>Min Width</b>	Minimum Width (inches) of trail. Only collected for Trail Classes 4 and 5.
<b>MP (Milepost)</b>	Distance, in miles, of a trail feature or deficiency from the Trailhead.
<b>Puncheon</b>	Log footbridge used in area of poor drainage.
<b>Raised Trail Structure</b>	Boardwalk, Turnpike, Puncheon.
<b>SAMMS No</b>	Asset Number



<b>Station Boundary</b>	Approved Acquisition Boundary files downloaded from FWS website.
<b>T Class</b>	Trail Class: TC1-5 (see Trail Classification System for descriptions).
<b>Tr Desig</b>	Trail Designation: Standard (Std), National Historic Trail (NHT), National Recreation Trail (NRT), National Scenic Trail (NST).
<b>Trail No</b>	Trails are numbered based on Trail Class at the trailhead. TC 1 = T100 series, TC2 = T200 series, etc.
<b>Turnpike</b>	Trail tread elevated with dirt, rock or other aggregate from parallel side ditches and held in place by logs.



## Trail Classification

Note: Trail Class descriptions define “typical” attributes, and exceptions may occur for any attribute.

Trail Attributes	Trail Class 1 Minimal/Undeveloped Trail	Trail Class 2 Simple/Minor Development Trail	Trail Class 3 Developed/Improved Trail	Trail Class 4 Highly Developed Trail	Trail Class 5 Fully Developed Trail
General Criteria					
Physical Characteristics to be Applied to All National Forest System Trails					
<b>Tread &amp; Traffic Flow</b>	<ul style="list-style-type: none"> <li>•Tread intermittent and often indistinct</li> <li>•May require route finding</li> <li>•Native materials only</li> </ul>	<ul style="list-style-type: none"> <li>•Tread discernible and continuous, but narrow and rough</li> <li>•Few or no allowances constructed for passing</li> <li>•Native materials</li> </ul>	<ul style="list-style-type: none"> <li>•Tread obvious and continuous</li> <li>•Width accommodates unhindered one-lane travel (occasional allowances constructed for passing)</li> <li>•Typically native materials</li> </ul>	<ul style="list-style-type: none"> <li>•Tread wide and relatively smooth with few irregularities</li> <li>•Width may consistently accommodate two-lane travel</li> <li>•Native or imported materials</li> <li>•May be hardened</li> </ul>	<ul style="list-style-type: none"> <li>•Width generally accommodates two-lane and two-directional travel, or provides frequent passing turnouts</li> <li>•Commonly hardened with asphalt or other imported material</li> </ul>
<b>Obstacles</b>	<ul style="list-style-type: none"> <li>•Obstacles common</li> <li>•Narrow passages; brush, steep grades, rocks and logs present</li> </ul>	<ul style="list-style-type: none"> <li>•Obstacles occasionally present</li> <li>•Blockages cleared to define route and protect resources</li> <li>•Vegetation may encroach into trailway</li> </ul>	<ul style="list-style-type: none"> <li>•Obstacles infrequent</li> <li>•Vegetation cleared outside of trailway</li> </ul>	<ul style="list-style-type: none"> <li>•Few or no obstacles exist</li> <li>•Grades typically &lt;12%</li> <li>•Vegetation cleared outside of trailway</li> </ul>	<ul style="list-style-type: none"> <li>•No obstacles</li> <li>•Grades typically &lt;8%</li> </ul>
<b>Constructed Features &amp; Trail Elements</b>	<ul style="list-style-type: none"> <li>•Minimal to non-existent</li> <li>•Drainage is functional</li> <li>•No constructed bridges or foot crossings</li> </ul>	<ul style="list-style-type: none"> <li>•Structures are of limited size, scale, and number</li> <li>•Drainage functional</li> <li>•Structures adequate to protect trail infrastructure and resources</li> <li>•Primitive foot crossings and fords</li> </ul>	<ul style="list-style-type: none"> <li>•Trail structures (walls, steps, drainage, raised trail) may be common and substantial</li> <li>•Trail bridges as needed for resource protection and appropriate access</li> <li>•Generally native materials used in Wilderness</li> </ul>	<ul style="list-style-type: none"> <li>•Structures frequent and substantial</li> <li>•Substantial trail bridges are appropriate at water crossings</li> <li>•Trailside amenities may be present</li> </ul>	<ul style="list-style-type: none"> <li>•Structures frequent or continuous; may include curbs, handrails, trailside amenities, and boardwalks</li> <li>•Drainage structures frequent; may include culverts and road-like designs</li> </ul>
<b>Signs</b>	<ul style="list-style-type: none"> <li>•Minimum required</li> <li>•Generally limited to regulation and resource protection</li> <li>•No destination signs present</li> </ul>	<ul style="list-style-type: none"> <li>•Minimum required for basic direction</li> <li>•Generally limited to regulation and resource protection</li> <li>•Typically very few or no destination signs present</li> </ul>	<ul style="list-style-type: none"> <li>•Regulation, resource protection, user reassurance</li> <li>•Directional signs at junctions, or when confusion is likely</li> <li>•Destination signs typically present</li> <li>•Informational and interpretive signs may be present outside of Wilderness</li> </ul>	<ul style="list-style-type: none"> <li>•Wide variety of signs likely present</li> <li>•Informational signs likely (outside of Wilderness)</li> <li>•Interpretive signs possible (outside of Wilderness)</li> <li>•Trail Universal Access information likely displayed at trailhead</li> </ul>	<ul style="list-style-type: none"> <li>•Wide variety of signage is present</li> <li>•Information and interpretive signs likely</li> <li>•Trail Universal Access information is typically displayed at trailhead</li> <li>•</li> </ul>
<b>Typical Recreation Environments &amp; Experience<sup>2</sup></b>	<ul style="list-style-type: none"> <li>•Natural, unmodified</li> <li>•ROS: Often Primitive setting, but may occur in other ROS settings</li> <li>•WROS: Primitive</li> </ul>	<ul style="list-style-type: none"> <li>•Natural, essentially unmodified</li> <li>•ROS: Typically Semi-Primitive setting</li> <li>•WROS: Primitive to Semi-Primitive</li> </ul>	<ul style="list-style-type: none"> <li>•Natural, primarily unmodified</li> <li>•ROS: Typically Semi-Primitive to Roaded Natural setting</li> <li>•WROS: Semi-Primitive to Transition</li> </ul>	<ul style="list-style-type: none"> <li>•May be modified</li> <li>•ROS: Typically Roaded Natural to Rural setting</li> <li>•WROS: Transition (rarely present in Wilderness)</li> </ul>	<ul style="list-style-type: none"> <li>•Can be highly modified</li> <li>•ROS: Typically Rural to Urban setting</li> <li>•Commonly associated with Visitor Centers or high-use recreation sites</li> <li>•Not present in Wilderness</li> </ul>