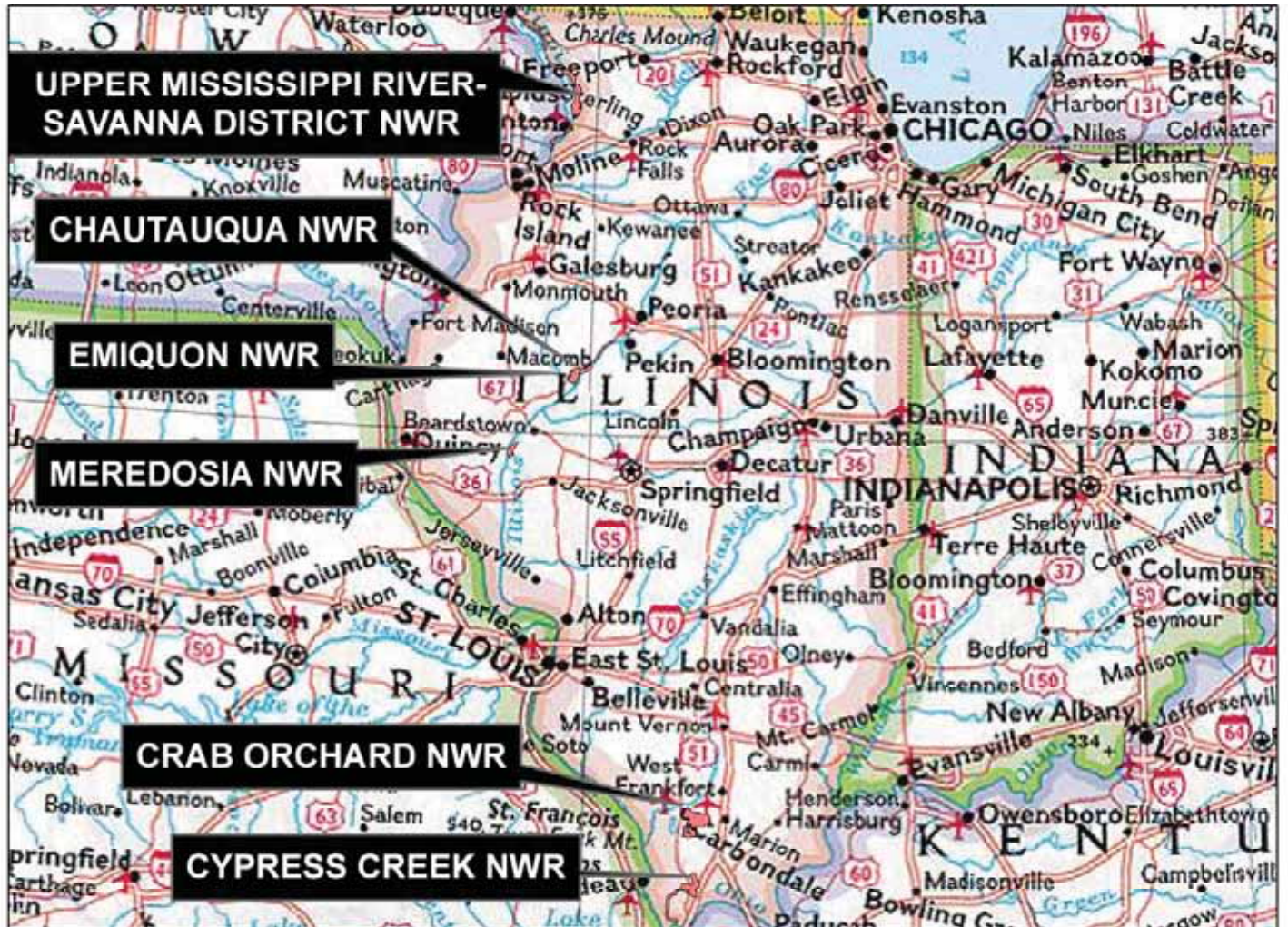


The Trail Inventory of U.S. Fish and Wildlife Service Stations in Illinois



100 50 0 100 Miles



Prepared By:
Federal Highway Administration
Central Federal Lands Highway Division
October 2006



TABLE OF CONTENTS

<u>SECTION</u>		<u>PAGE</u>
1.	<u>IL STATE SUMMARY</u>	
	Table of Contents	1-1
	List of Refuges	1-2
	Mileage by Trail Class, Condition, and Surface	1-3
2-7.	<u>REFUGE SUMMARIES</u>	
	Mileage by Trail Class, Condition, and Surface	X-1
	Trail Location Map	X-2
	Trail Identification	X-3
	Condition and Deficiency Sheets	X-4
	Photographic Sheets	X-5
8.	<u>APPENDIX</u>	
	Glossary of Terms and Abbreviations	8-1
	Trail Classification System	8-4

FWS Stations in Illinois with Trails

Station Name	Trail Miles	Chapter
Chautauqua NWR	0.59	2
Crab Orchard NWR	7.20	3
Cypress Creek NWR	2.41	4
Emiquon NWR	1.17	5
Meredosia NWR	0.15	6
Upper Mississippi NWR - Savanna District	1.78	7

Illinois FWS Stations Trail Summaries

Trail Miles and Percentages by Surface Type and Condition

Trail Surface Type	Mileage by Trail Condition												Total Miles
	Excellent		Good		Fair		Poor		Very Poor		Not Rated*		
	MILES	%	MILES	%	MILES	%	MILES	%	MILES	%	MILES	%	
Native	5.16	39%		0%	0.44	3%		0%		0%		0%	5.60
Gravel	3.79	28%		0%		0%		0%		0%		0%	3.79
Asphalt		0%	0.28	2%	1.64	12%		0%		0%		0%	1.92
Concrete		0%		0%		0%		0%		0%		0%	0.00
Turnpike		0%		0%		0%		0%		0%		0%	0.00
Boardwalk	0.12	1%		0%		0%		0%		0%		0%	0.12
Puncheon		0%		0%		0%		0%		0%		0%	0.00
Woodchips		0%		0%		0%		0%		0%		0%	0.00
Mowed	0.82	6%	0.15	1%		0%		0%	0.70	5%		0%	1.67
Admin Road		0%		0%		0%		0%		0%	0.20	2%	0.20
Other		0%		0%		0%		0%		0%		0%	0.00
Totals	9.89	74%	0.43	3%	2.08	16%	0.00	0%	0.70	5%	0.20	2%	13.30

Trail Miles and Percentages by Trail Classification and Condition

Trail Classification	Mileage by Trail Condition												Total Miles
	Excellent		Good		Fair		Poor		Very Poor		Not Rated*		
	MILES	%	MILES	%	MILES	%	MILES	%	MILES	%	MILES	%	
TC1		0%		0%		0%		0%		0%		0%	0.00
TC2	0.47	4%		0%		0%		0%		0%		0%	0.47
TC3	6.42	48%	0.15	1%	0.44	3%		0%	0.70	5%	0.20	2%	7.91
TC4	2.88	22%		0%	1.64	12%		0%		0%		0%	4.52
TC5	0.12	1%	0.28	2%		0%		0%		0%		0%	0.40
Totals	9.89	74%	0.43	3%	2.08	16%	0.00	0%	0.70	5%	0.20	2%	13.30

* Admin Roads are included in the inventory but are not rated for condition.

The Trail Inventory of Chautauqua National Wildlife Refuge Havana, Illinois



**Prepared By:
Federal Highway Administration
Central Federal Lands Highway Division
October 2006**



Chautauqua NWR

Trail and Trail Feature Summaries

Trail Miles and Percentages by Surface Type and Condition

Trail Surface Type	Mileage by Trail Condition												Total Miles
	Excellent		Good		Fair		Poor		Very Poor		Not Rated*		
	MILES	%	MILES	%	MILES	%	MILES	%	MILES	%	MILES	%	
Native		0%		0%		0%		0%		0%		0%	0.00
Gravel	0.57	97%		0%		0%		0%		0%		0%	0.57
Asphalt		0%		0%		0%		0%		0%		0%	0.00
Concrete		0%		0%		0%		0%		0%		0%	0.00
Turnpike		0%		0%		0%		0%		0%		0%	0.00
Boardwalk	0.02	3%		0%		0%		0%		0%		0%	0.02
Puncheon		0%		0%		0%		0%		0%		0%	0.00
Woodchips		0%		0%		0%		0%		0%		0%	0.00
Mowed		0%		0%		0%		0%		0%		0%	0.00
Admin Road		0%		0%		0%		0%		0%		0%	0.00
Other		0%		0%		0%		0%		0%		0%	0.00
Totals	0.59	100%	0.00	0%	0.00	0%	0.00	0%	0.00	0%	0.00	0%	0.59

Trail Miles and Percentages by Trail Classification and Condition

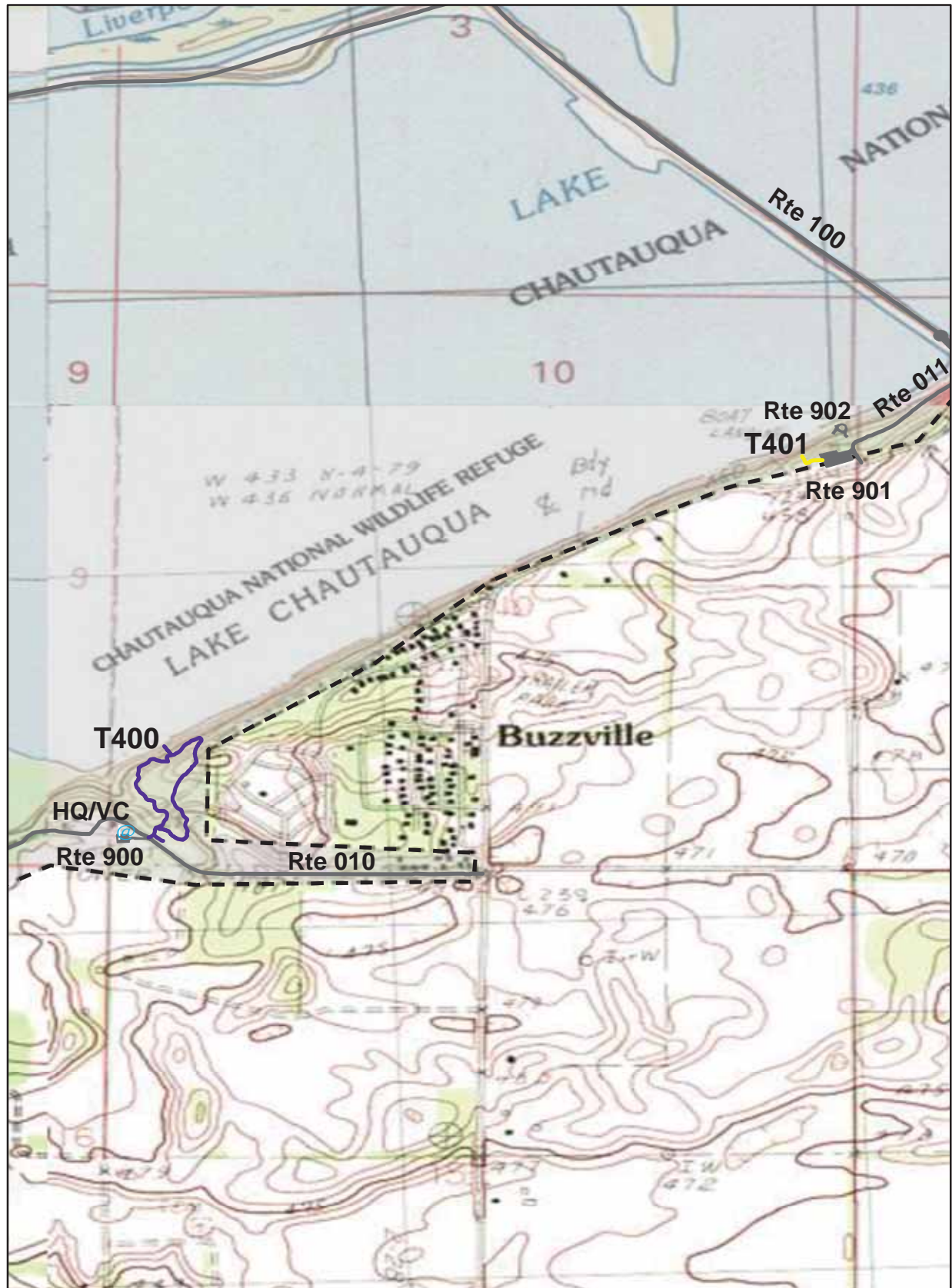
Trail Classification	Mileage by Trail Condition												Total Miles
	Excellent		Good		Fair		Poor		Very Poor		Not Rated*		
	MILES	%	MILES	%	MILES	%	MILES	%	MILES	%	MILES	%	
TC1		0%		0%		0%		0%		0%		0%	0.00
TC2		0%		0%		0%		0%		0%		0%	0.00
TC3		0%		0%		0%		0%		0%		0%	0.00
TC4	0.57	97%		0%		0%		0%		0%		0%	0.57
TC5	0.02	3%		0%		0%		0%		0%		0%	0.02
Totals	0.59	100%	0.00	0%	0.00	0%	0.00	0%	0.00	0%	0.00	0%	0.59

* Admin Roads are included in the inventory but are not rated for condition.

Trail Features

Trail Number	Feature Type	Quantity	Grouped Feature	Milepost	Photo
T400	Sign	1	No	0.00	1922
T400	Sign	2	No	0.00	1920
T400	Sign	1	No	0.01	1923
T400	Bench	1	No	0.01	N/A
T400	Bench	1	No	0.05	N/A
T400	Sign	7	Yes	0.05	1924
T400	Lookout/Ob Deck	1	No	0.16	N/A
T400	Lookout/Ob Deck	1	No	0.24	N/A
T400	Bridge -sf	275	No	0.22	1927
T400	Bridge -sf	150	No	0.24	1929
T400	Lookout/Ob Deck	1	No	0.28	N/A
T400	Bench	1	No	0.34	N/A
T400	Bench	1	No	0.47	N/A
T400	Other	2	No	0.02	N/A
T401	Sign	2	No	0.00	1931
T401	Bench	2	No	0.01	N/A
T401	Lookout/Ob Deck	1	No	0.04	N/A
sf-square feet lf-linear feet cf-cubic feet					

CHAUTAUQUA NATIONAL WILDLIFE REFUGE TRAIL LOCATION MAP



 Station Boundary

@ HQ/VC

 Miles
0 0.25 0.5

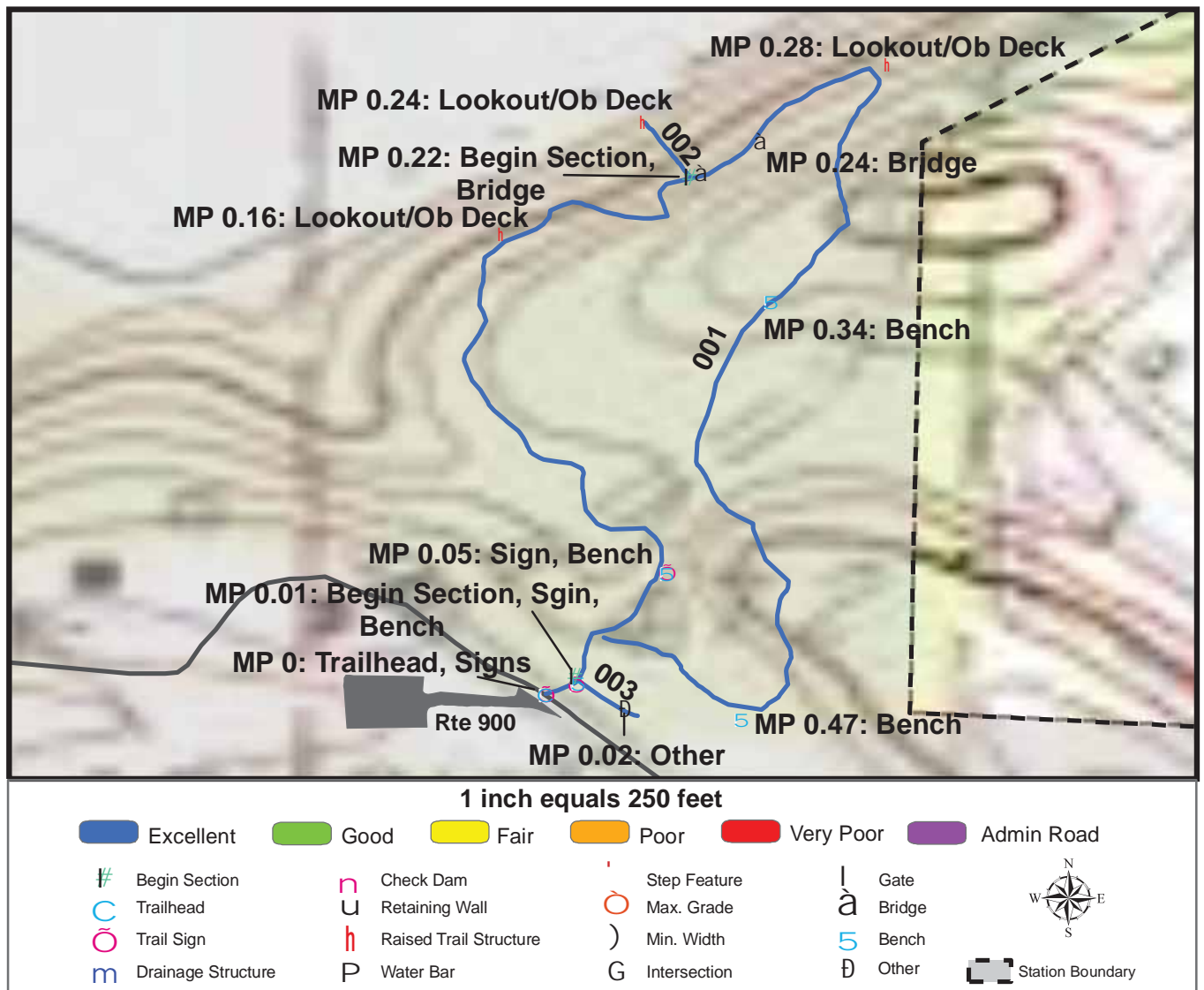
TRAILS ID

Station Name: Chautauqua NWR

Org. Code: 33650

Trail #	Trail Name	Surface Type	SAMMS	Trail Mileage	Trail Description (Begin and End point of trail)
T400	Chautauqua Nature Trail	Boardwalk, Gravel	10013996	0.55	From Visitor Center Parking (Rte 900) to end of trail loop
T401	Eagle Bluff Trail	Gravel	10014002	0.04	From Eagle Bluff Restroom Parking (Rte 901) to end of trail

TRAIL CONDITION



Trail Name: Chautauqua Nature Trail

Refuge Name: Chautauqua NWR

Trail Number: T400

Region: 3

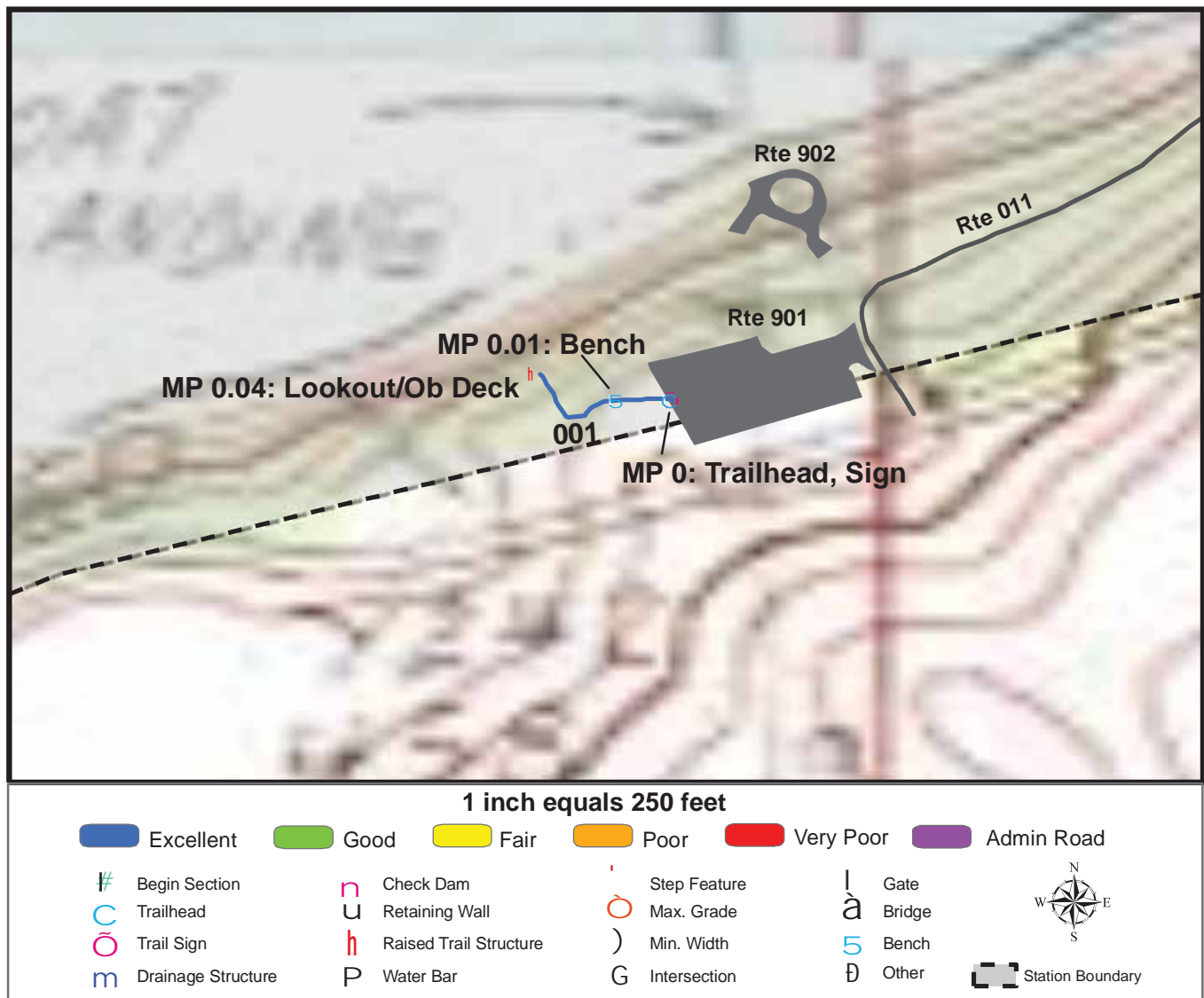
TOTAL LENGTH: 0.55 Miles

Section Number	001	002	003		
Section Length (miles)	0.51	0.02	0.02		
SAMMS Number	10013996	10013996	10013996		
Rating Date	10/23/2006	10/23/2006	10/23/2006		
Trail Section Information					
Trail Class	TC4	TC5	TC4		
Surface Type	Gravel	Boardwalk	Gravel		
Surface Firmness	Hard	Hard	Hard		
Width (inches)	62	60	62		
Average Grade (%)	2.7	2.7	2.7		
Average X-slope (%)	0.8	0.8	0.8		
Trail Condition Information					
Deferred Maintenance	\$0	\$0	\$0		
CRV	\$92900	\$11800	\$2200		
FCI	0	0	0		
Condition	Excellent	Excellent	Excellent		

Trail Condition TOTALS

Deferred Maintenance	CRV	FCI	Condition
\$0	\$106900	0	Excellent

TRAIL CONDITION



Trail Name: Eagle Bluff Trail

Refuge Name: Chautauqua NWR

Trail Number: T401

Region: 3

TOTAL LENGTH: 0.04 Miles

Section Number	001				
Section Length (miles)	0.04				
SAMMS Number	10014002				
Rating Date	10/23/2006				
Trail Section Information					
Trail Class	TC4				
Surface Type	Gravel				
Surface Firmness	Hard				
Width (inches)	60				
Average Grade (%)	1.4				
Average X-slope (%)	1.4				
Trail Condition Information					
Deferred Maintenance	\$0				
CRV	\$4800				
FCI	0				
Condition	Excellent				

Trail Condition TOTALS

Deferred Maintenance	CRV	FCI	Condition
\$0	\$4800	0	Excellent

PHOTOGRAPHIC SHEET

TRAIL NUMBER: **T400**

STATION: Chautauqua NWR

DATE: 10/23/2006



Photo # 1921 - MP 0.0 - Trailhead

TRAIL NUMBER: **T400**

STATION: Chautauqua NWR

DATE: 10/23/2006



Photo # 1920 - MP 0.0 - Sign

PHOTOGRAPHIC SHEET

TRAIL NUMBER: **T400**

STATION: Chautauqua NWR

DATE: 10/23/2006



Photo # 1922 - MP 0.0 - Sign

TRAIL NUMBER: **T400**

STATION: Chautauqua NWR

DATE: 10/23/2006



Photo # 1923 - MP 0.01 - Sign

PHOTOGRAPHIC SHEET

TRAIL NUMBER: **T400**

STATION: Chautauqua NWR

DATE: 10/23/2006



Photo # 1930 - MP 0.01 - Begin Section 003

TRAIL NUMBER: **T400**

STATION: Chautauqua NWR

DATE: 10/23/2006



Photo # 1924 - MP 0.05 - Sign (Grouped)

PHOTOGRAPHIC SHEET

TRAIL NUMBER: **T400**

STATION: Chautauqua NWR

DATE: 10/23/2006



Photo # 1926 - MP 0.22 - Begin Section 002

TRAIL NUMBER: **T400**

STATION: Chautauqua NWR

DATE: 10/23/2006



Photo # 1927 - MP 0.22 - Bridge

PHOTOGRAPHIC SHEET

TRAIL NUMBER: **T400**

STATION: Chautauqua NWR

DATE: 10/23/2006



Photo # 1929 - MP 0.24 - Bridge

TRAIL NUMBER: **T401**

STATION: Chautauqua NWR

DATE: 10/23/2006



Photo # 1931 - MP 0.0 - Trailhead, Sign

The Trail Inventory of Crab Orchard National Wildlife Refuge Marion, Illinois



**Prepared By:
Federal Highway Administration
Central Federal Lands Highway Division
October 2006**



Crab Orchard NWR

Trail and Trail Feature Summaries

Trail Miles and Percentages by Surface Type and Condition

Trail Surface Type	Mileage by Trail Condition												Total Miles
	Excellent		Good		Fair		Poor		Very Poor		Not Rated*		
	MILES	%	MILES	%	MILES	%	MILES	%	MILES	%	MILES	%	
Native	3.43	48%		0%		0%		0%		0%		0%	3.43
Gravel	1.32	18%		0%		0%		0%		0%		0%	1.32
Asphalt		0%	0.28	4%	1.64	23%		0%		0%		0%	1.92
Concrete		0%		0%		0%		0%		0%		0%	0.00
Turnpike		0%		0%		0%		0%		0%		0%	0.00
Boardwalk		0%		0%		0%		0%		0%		0%	0.00
Puncheon		0%		0%		0%		0%		0%		0%	0.00
Woodchips		0%		0%		0%		0%		0%		0%	0.00
Mowed	0.53	7%		0%		0%		0%		0%		0%	0.53
Admin Road		0%		0%		0%		0%		0%		0%	0.00
Other		0%		0%		0%		0%		0%		0%	0.00
Totals	5.28	73%	0.28	4%	1.64	23%	0.00	0%	0.00	0%	0.00	0%	7.20

Trail Miles and Percentages by Trail Classification and Condition

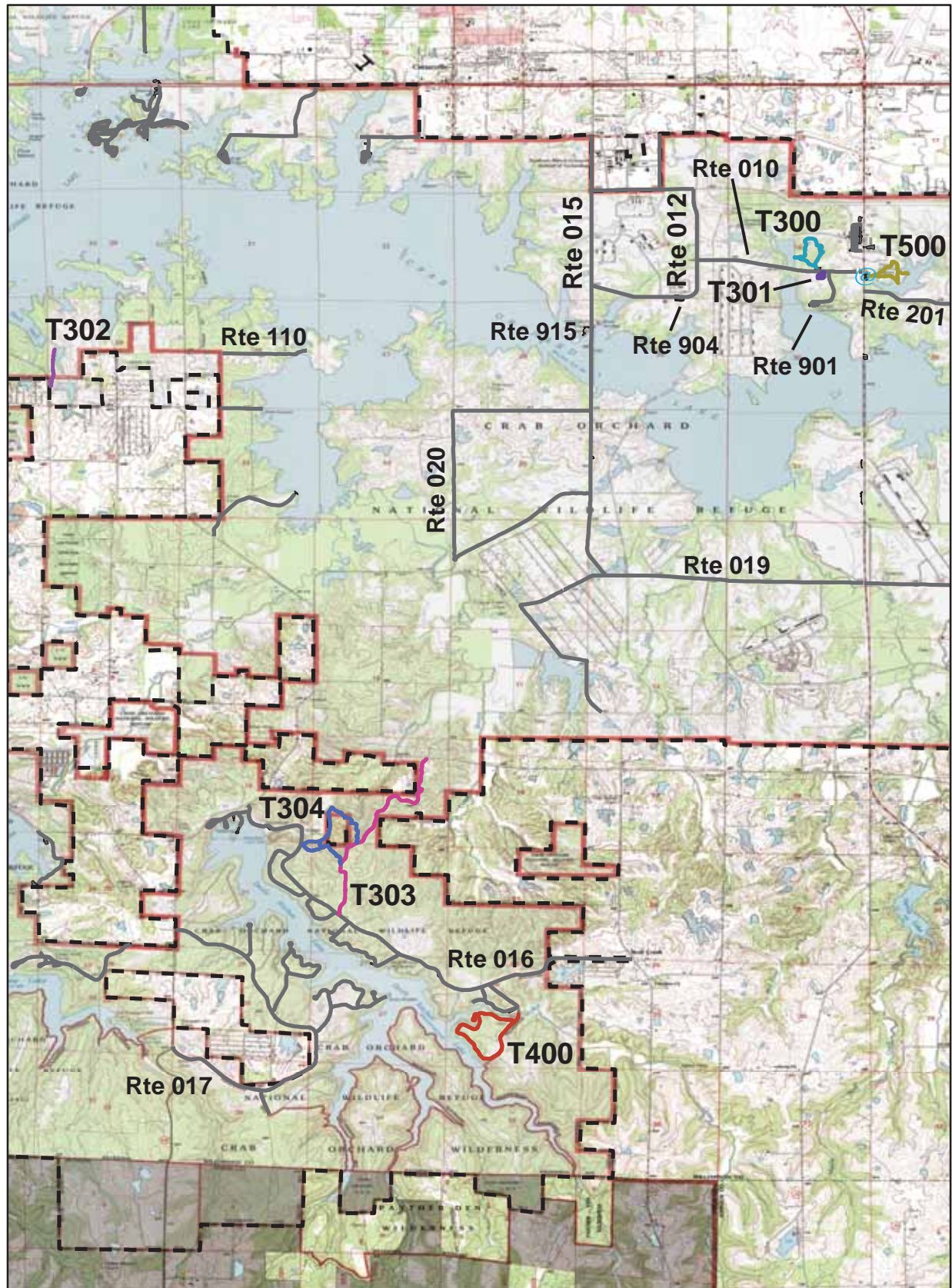
Trail Classification	Mileage by Trail Condition												Total Miles
	Excellent		Good		Fair		Poor		Very Poor		Not Rated*		
	MILES	%	MILES	%	MILES	%	MILES	%	MILES	%	MILES	%	
TC1		0%		0%		0%		0%		0%		0%	0.00
TC2	0.47	7%		0%		0%		0%		0%		0%	0.47
TC3	4.40	61%		0%		0%		0%		0%		0%	4.40
TC4	0.41	6%		0%	1.64	23%		0%		0%		0%	2.05
TC5		0%	0.28	4%		0%		0%		0%		0%	0.28
Totals	5.28	73%	0.28	4%	1.64	23%	0.00	0%	0.00	0%	0.00	0%	7.20

* Admin Roads are included in the inventory but are not rated for condition.

Trail Features

Trail Number	Feature Type	Quantity	Grouped Feature	Milepost	Photo
T300	Sign	5	No	0.01	0936-8
T300	Water Bar:Wood -each	36	Yes	0.03	N/A
T300	Culvert -lf	63	Yes	0.05	N/A
T300	Bench	1	No	0.15	N/A
T300	Boardwalk -lf	22	No	0.30	0942
T300	Sign	1	No	0.33	0943
T300	Bench	1	No	0.44	N/A
T300	Bench	1	No	0.60	N/A
T300	Lookout/Ob Deck	1	No	0.63	N/A
T301	Sign	1	No	0.00	0947
T302	Gate	1	No	0.00	N/A
T302	Sign	1	No	0.00	0949
T303	Gate	1	No	0.00	N/A
T303	Sign	17	Yes	0.00	1870
T303	Sign	3	No	0.00	1868
T303	Sign	1	No	0.49	1872
T303	Sign	1	No	0.56	0966
T303	Boardwalk -lf	25	No	1.69	1876
T303	Boardwalk -lf	25	No	1.72	1877
T303	Sign	1	No	1.97	1878
T304	Sign	11	Yes	0.00	0961
T304	Sign	5	Yes	0.00	0962
T304	Sign	1	No	0.00	0960
T304	Step: Log -each	7	No	0.00	N/A
T304	Bridge -sf	150	No	0.01	0963
T304	Culvert -lf	25	Yes	0.04	N/A
T304	Water Bar:Wood -each	7	Yes	0.04	N/A
T304	Step: Rock -each	74	Yes	0.20	N/A
T304	Step: Log -each	58	Yes	0.21	N/A
T304	Bridge -sf	60	No	0.66	0968
T304	Crib: Log -cf	5	No	0.90	N/A
T304	Bridge -sf	60	No	1.24	0972
T304	Boardwalk -lf	20	No	1.31	0973
T400	Culvert -lf	265	Yes	0.61	N/A
T500	Sign	1	No	0.00	0921
T500	Sign	2	No	0.01	0923
T500	Culvert -lf	45	Yes	0.03	N/A
T500	Bench	1	No	0.08	N/A
T500	Sign	1	No	0.10	0926
T500	Bench	1	No	0.20	N/A
T500	Sign	1	No	0.20	0927
T500	Bench	1	No	0.27	N/A
T500	Sign	1	No	0.27	0928
T500	Other	1	No	0.28	N/A
T500	Bench	1	No	0.32	N/A
T500	Bench	1	No	0.38	N/A
T500	Lookout/Ob Deck	1	No	0.44	N/A
sf-square feet lf-linear feet cf-cubic feet					

CRAB ORCHARD NATIONAL WILDLIFE REFUGE TRAIL LOCATION MAP



 Station Boundary

 HQ/VC

 Miles
0 1 2

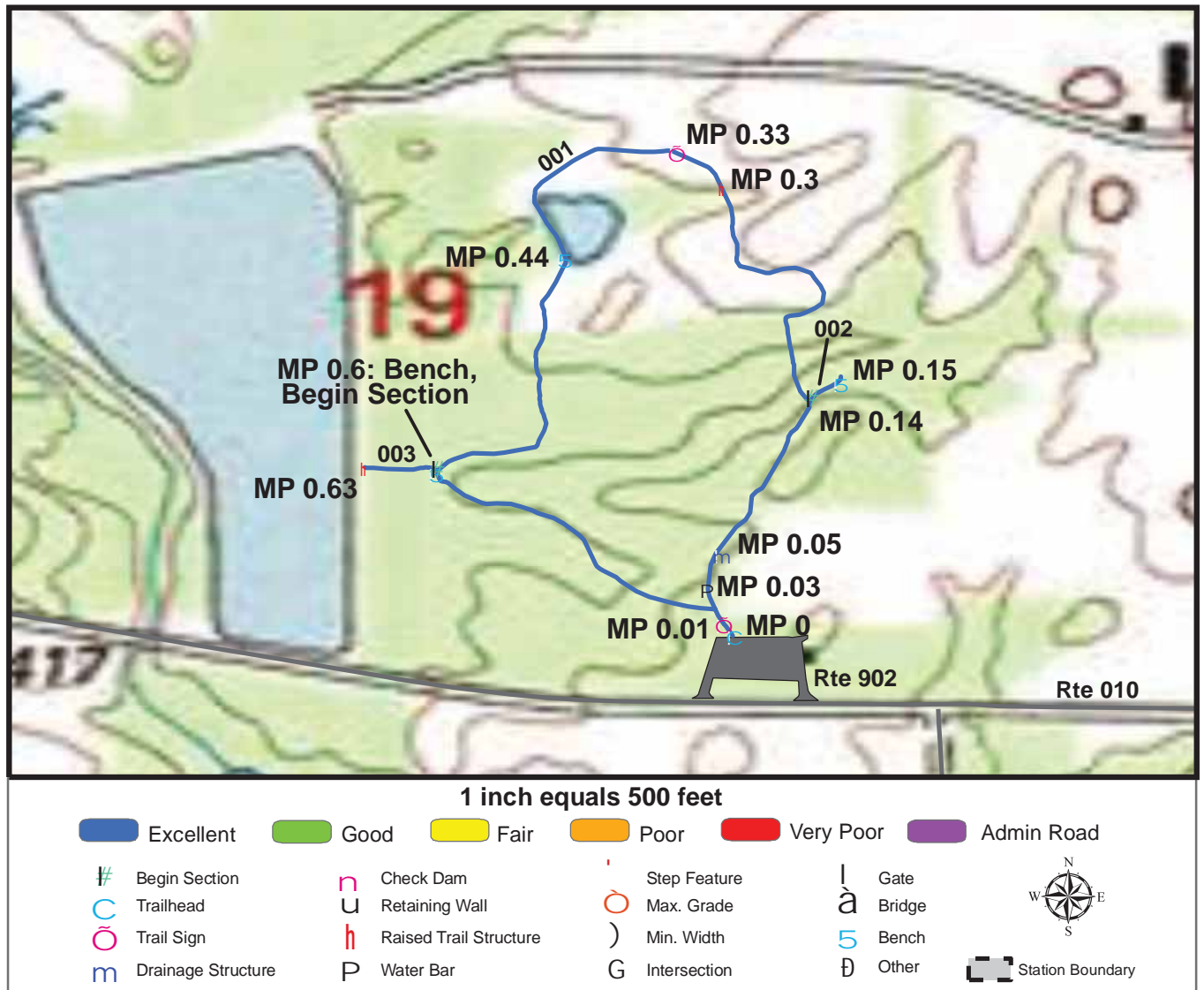
TRAILS ID

Station Name: Crab Orchard NWR

Org. Code: 33610

Trail #	Trail Name	Surface Type	SAMMS	Trail Mileage	Trail Description (Begin and End point of trail)
T300	Harmony Trail	Gravel, Native	10013622	0.81	From Chamesstown School Trail Parking (Rte 902) to end of loop
T301	Prairie Trail	Mowed	N/A	0.18	From Pigeon Creek Road (Rte 010) to end of loop
T302	Two Ponds Trail	Mowed	N/A	0.35	From Manns Pond Parking (Rte 948) to end of trail
T303	Wild Turkey Trail	Native	10049426	1.98	From Tacoma Lake Road (Rte 016) turnout to Grassy Road turnout
T304	Rocky Bluff Trail	Gravel, Native	10049427	1.47	From Tacoma Lake Road (Rte 016) turnout to Tacoma Lake Road (Rte 016) turnout (end of loop)
T400	Grassy Creek Trail	Asphalt	N/A	1.64	From Grassy Creek bridge to end of loop
T500	Woodland Nature Trail	Asphalt, Gravel	N/A	0.77	From Visitor Center Parking (Rte 900) to observation deck

TRAIL CONDITION



Trail Name: Harmony Trail

Refuge Name: Crab Orchard NWR

Trail Number: T300

Region: 3

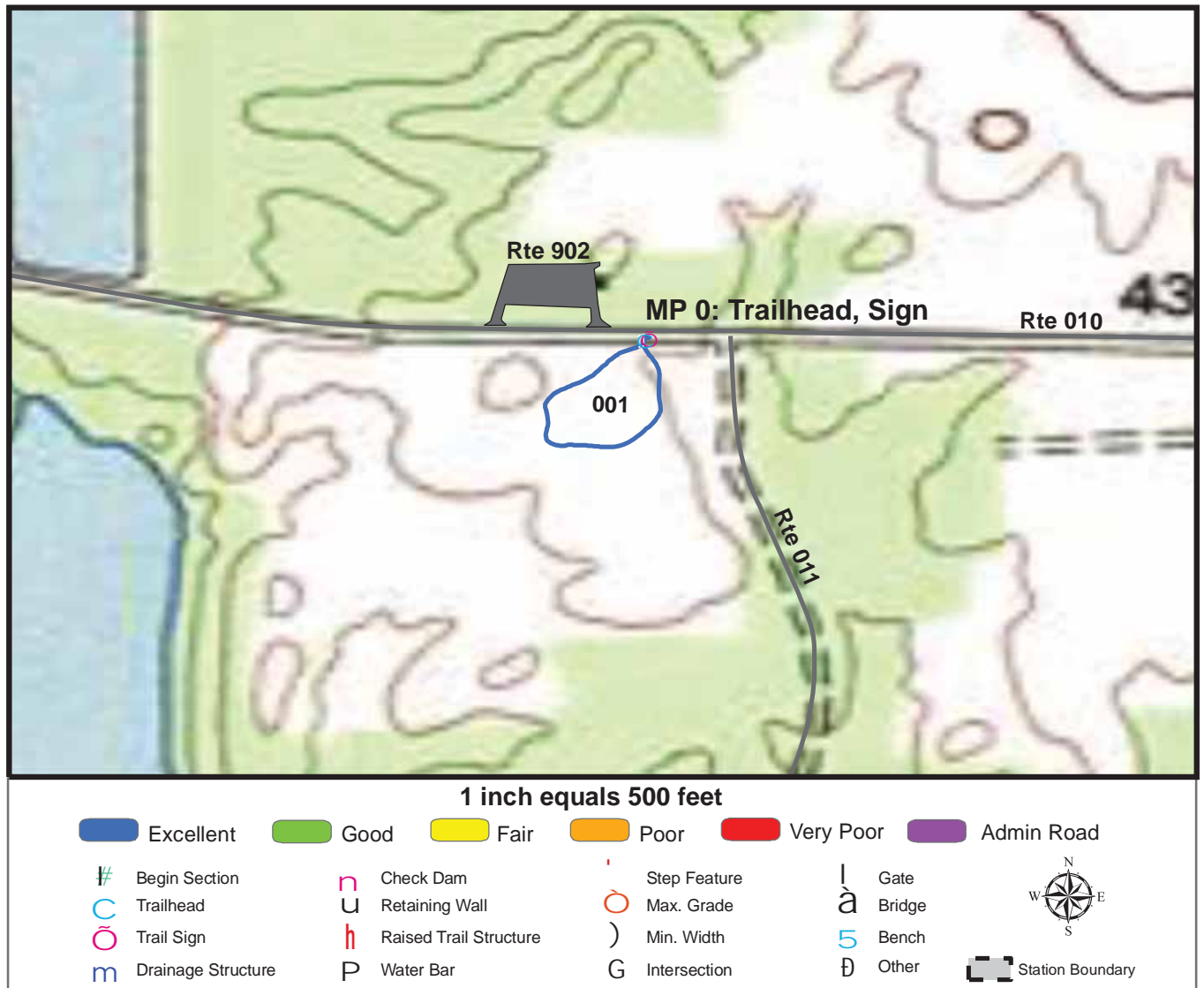
TOTAL LENGTH: 0.81 Miles

Section Number	001	002	003		
Section Length (miles)	0.76	0.02	0.03		
SAMMS Number	10013622	10013622	10013622		
Rating Date	10/19/2006	10/19/2006	10/19/2006		
Trail Section Information					
Trail Class	TC3	TC3	TC3		
Surface Type	Gravel	Native	Gravel		
Surface Firmness	Firm	Firm	Firm		
Width (inches)	72	48	48		
Average Grade (%)	2.3	2.3	2.3		
Average X-slope (%)	3.4	3.4	3.4		
Trail Condition Information					
Deferred Maintenance	\$0	\$0	\$0		
CRV	\$135500	\$2000	\$3600		
FCI	0	0	0		
Condition	Excellent	Excellent	Excellent		

Trail Condition TOTALS

Deferred Maintenance	CRV	FCI	Condition
\$0	\$141100	0	Excellent

TRAIL CONDITION



Trail Name: Prairie Trail

Refuge Name: Crab Orchard NWR

Trail Number: T301

Region: 3

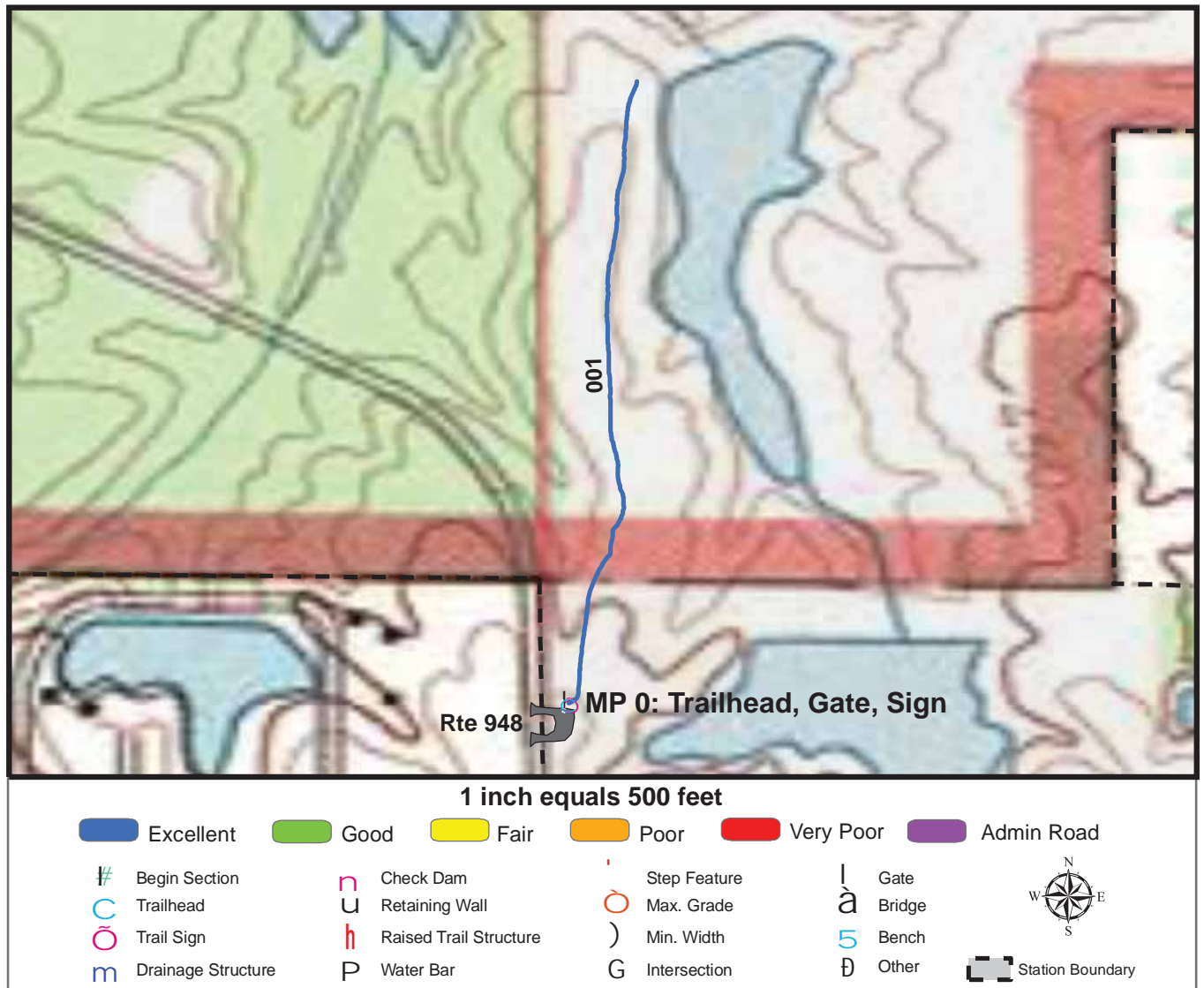
TOTAL LENGTH: 0.18 Miles

Section Number	001				
Section Length (miles)	0.18				
SAMMS Number	N/A				
Rating Date	10/19/2006				
Trail Section Information					
Trail Class	TC3				
Surface Type	Mowed				
Surface Firmness	Firm				
Width (inches)	108				
Average Grade (%)	1.9				
Average X-slope (%)	3				
Trail Condition Information					
Deferred Maintenance	\$0				
CRV	\$10200				
FCI	0				
Condition	Excellent				

Trail Condition TOTALS

Deferred Maintenance	CRV	FCI	Condition
\$0	\$10200	0	Excellent

TRAIL CONDITION



Trail Name: Two Ponds Trail

Refuge Name: Crab Orchard NWR

Trail Number: T302

Region: 3

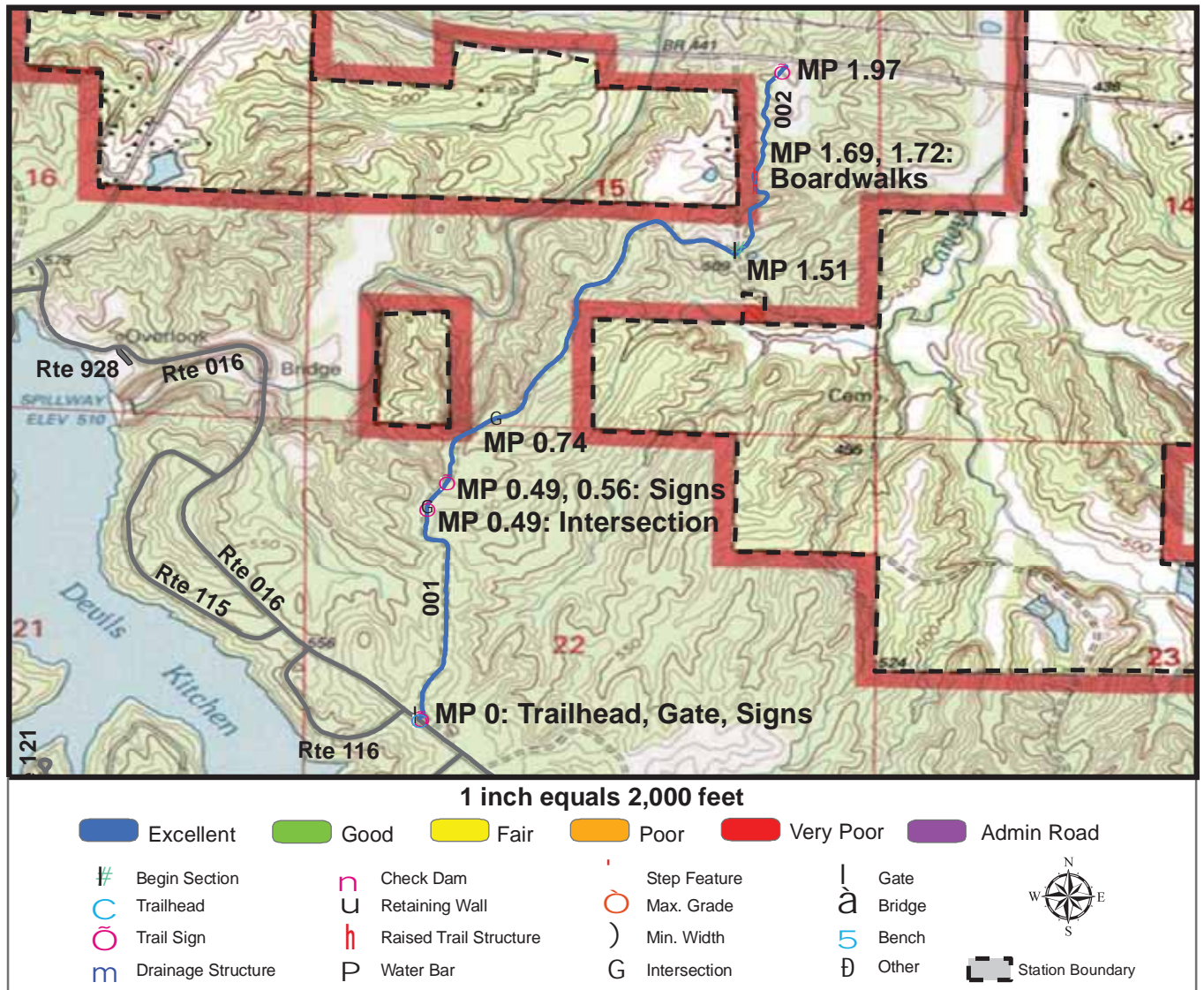
TOTAL LENGTH: 0.35 Miles

Section Number	001				
Section Length (miles)	0.35				
SAMMS Number	N/A				
Rating Date	10/19/2006				
Trail Section Information					
Trail Class	TC3				
Surface Type	Mowed				
Surface Firmness	Firm				
Width (inches)	204				
Average Grade (%)	1				
Average X-slope (%)	8.6				
Trail Condition Information					
Deferred Maintenance	\$0				
CRV	\$39200				
FCI	0				
Condition	Excellent				

Trail Condition TOTALS

Deferred Maintenance	CRV	FCI	Condition
\$0	\$39200	0	Excellent

TRAIL CONDITION



Trail Name: Wild Turkey Trail

Refuge Name: Crab Orchard NWR

Trail Number: T303

Region: 3

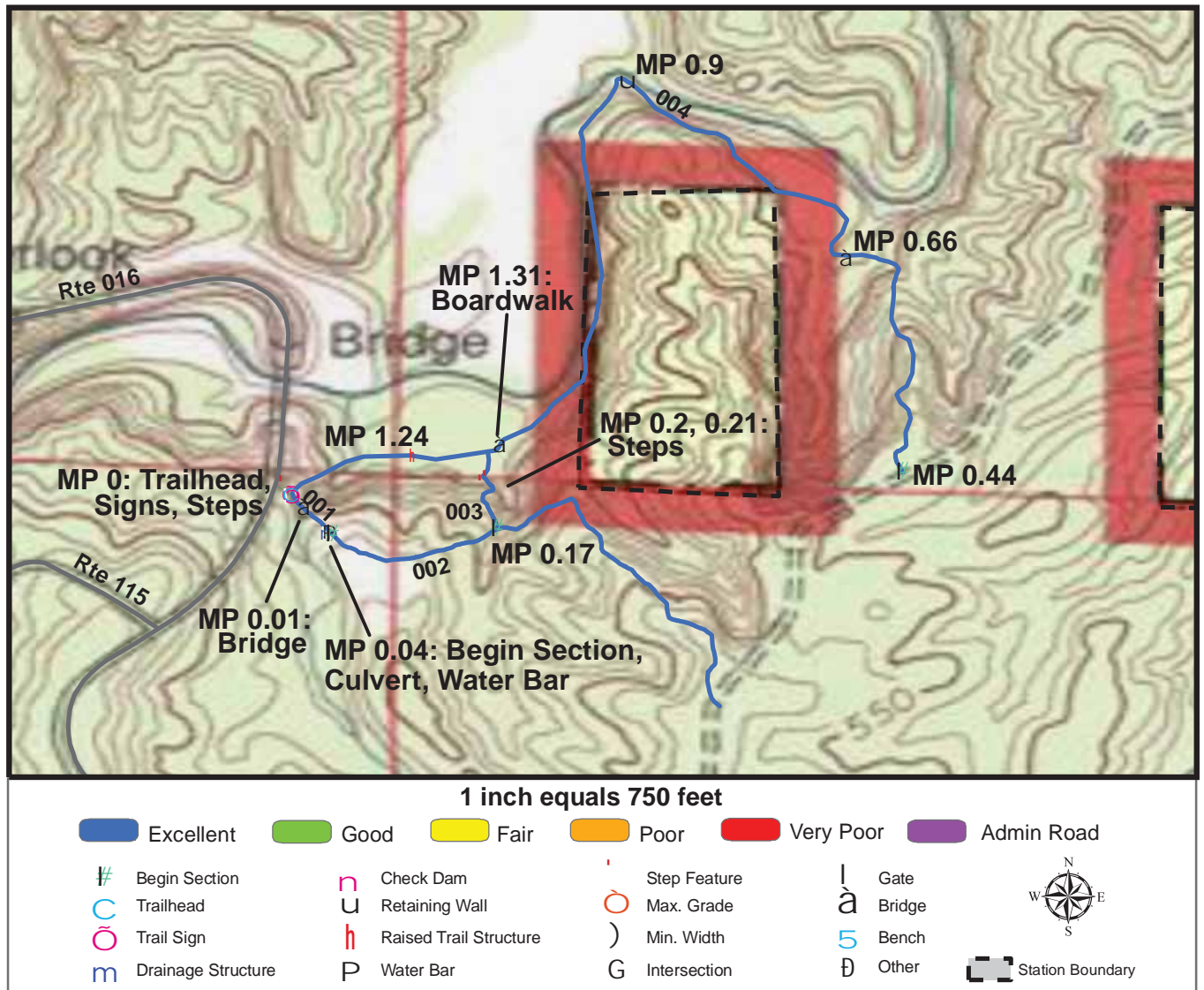
TOTAL LENGTH: 1.98 Miles

Section Number	001	002		
Section Length (miles)	1.51	0.47		
SAMMS Number	10049426	10049426		
Rating Date	10/19/2006	10/19/2006		
Trail Section Information				
Trail Class	TC3	TC2		
Surface Type	Native	Native		
Surface Firmness	Firm	Firm		
Width (inches)	96	36		
Average Grade (%)	11	11		
Average X-slope (%)	5.4	5.4		
Trail Condition Information				
Deferred Maintenance	\$0	\$0		
CRV	\$302400	\$37400		
FCI	0	0		
Condition	Excellent	Excellent		

Trail Condition TOTALS

Deferred Maintenance	CRV	FCI	Condition
\$0	\$339800	0	Excellent

TRAIL CONDITION



Trail Name: Rocky Bluff Trail

Refuge Name: Crab Orchard NWR

Trail Number: T304

Region: 3

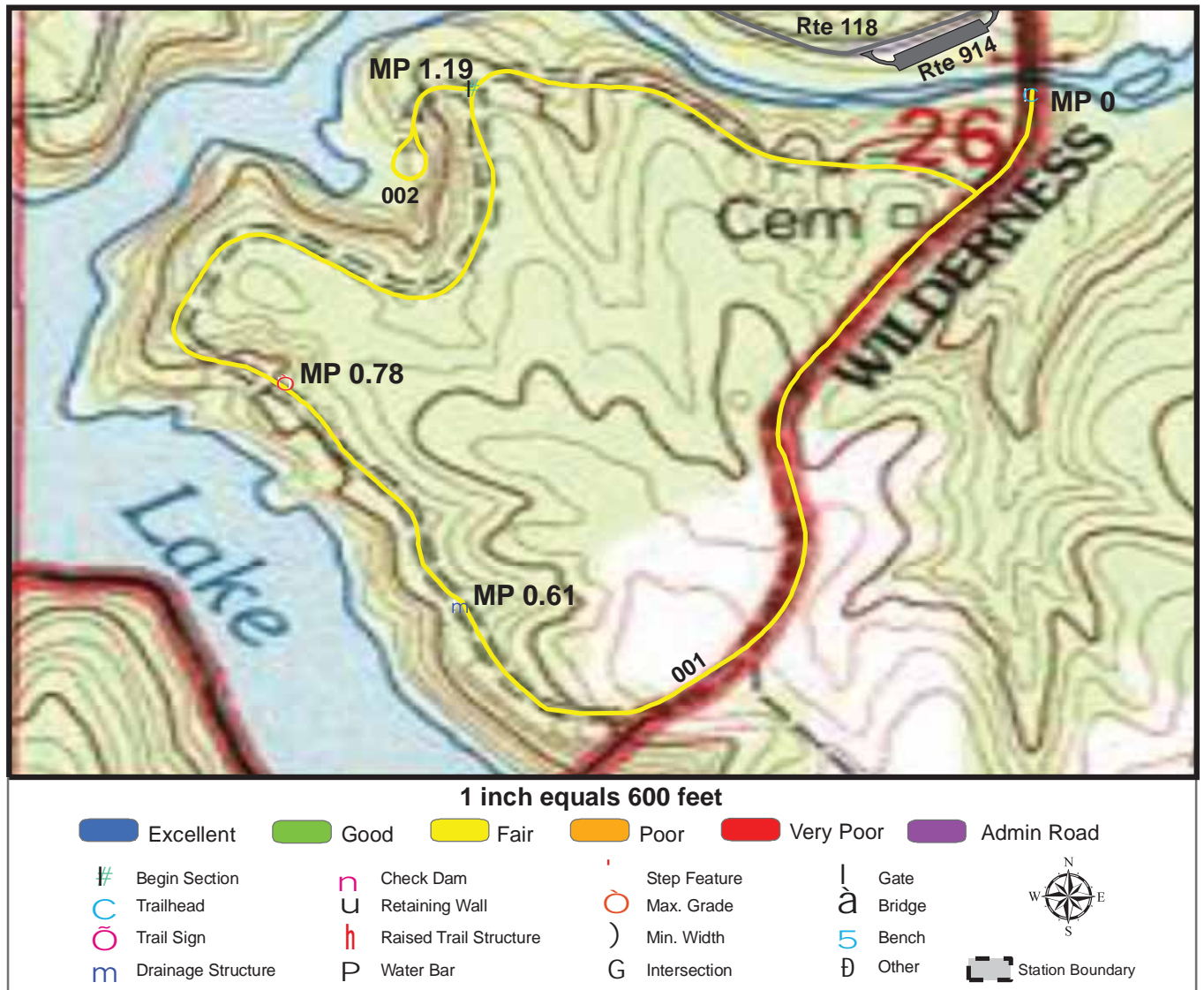
TOTAL LENGTH: 1.47 Miles

Section Number	001	002	003	004
Section Length (miles)	0.04	0.4	0.07	0.96
SAMMS Number	10049427	10049427	10049427	10049427
Rating Date	10/19/2006	10/19/2006	10/19/2006	10/19/2006
Trail Section Information				
Trail Class	TC3	TC3	TC3	TC3
Surface Type	Gravel	Native	Native	Native
Surface Firmness	Firm	Firm	Firm	Firm
Width (inches)	72	48	48	24
Average Grade (%)	5.7	5.7	5.7	5.7
Average X-slope (%)	2.3	2.3	2.3	2.3
Trail Condition Information				
Deferred Maintenance	\$0	\$0	\$0	\$0
CRV	\$20300	\$40100	\$31200	\$58700
FCI	0	0	0	0
Condition	Excellent	Excellent	Excellent	Excellent

Trail Condition TOTALS

Deferred Maintenance	CRV	FCI	Condition
\$0	\$150300	0	Excellent

TRAIL CONDITION



Trail Name: Grassy Creek Trail

Refuge Name: Crab Orchard NWR

Trail Number: T400

Region: 3

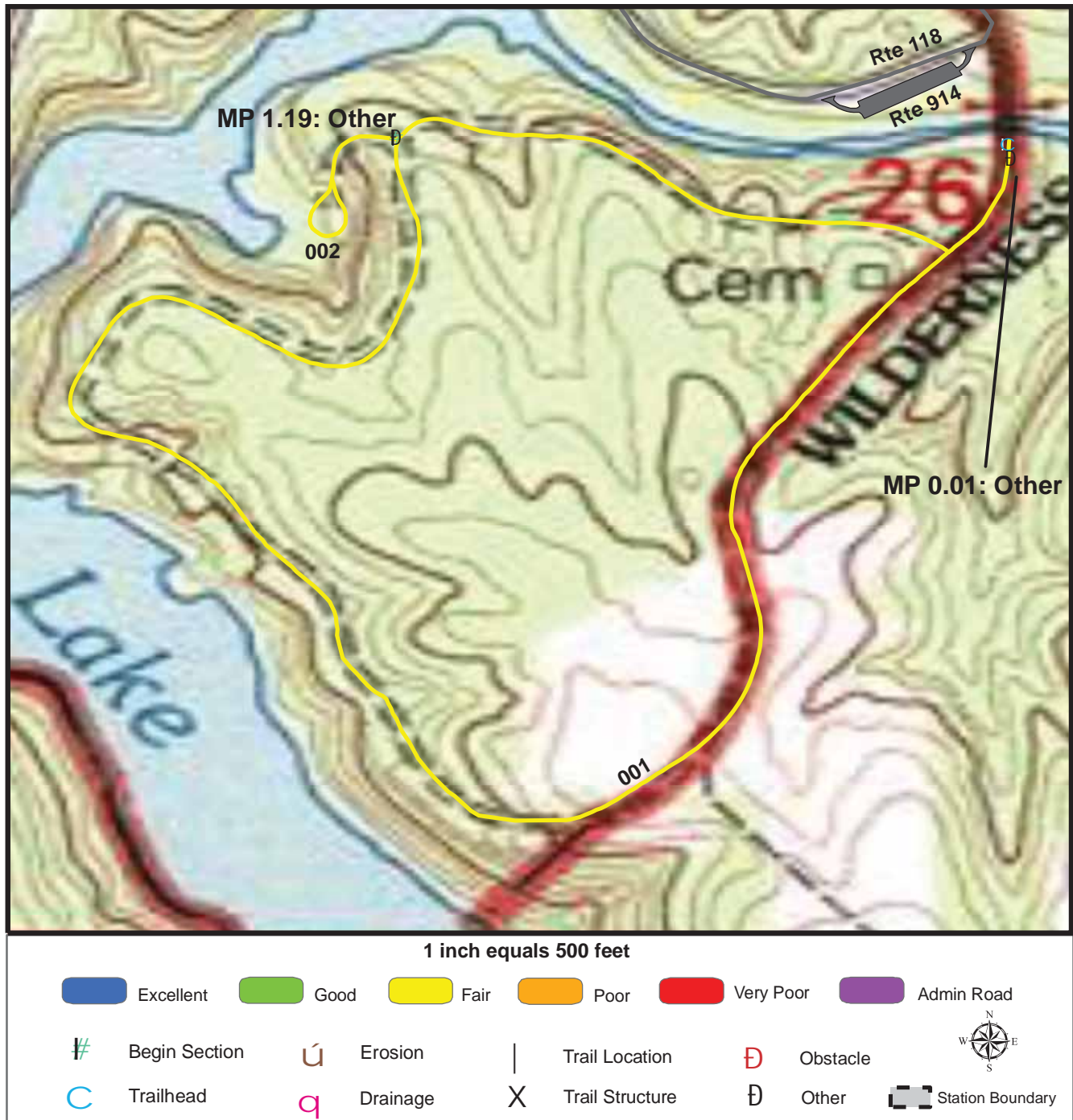
TOTAL LENGTH: 1.64 Miles

Section Number	001	002			
Section Length (miles)	1.51	0.13			
SAMMS Number	N/A	N/A			
Rating Date	10/19/2006	10/19/2006			
Trail Section Information					
Trail Class	TC4	TC4			
Surface Type	Asphalt	Asphalt			
Surface Firmness	Paved	Paved			
Width (inches)	144	144			
Average Grade (%)	6	6			
Average X-slope (%)	5.9	5.9			
Trail Condition Information					
Deferred Maintenance	\$47500	\$4300			
CRV	\$661700	\$56200			
FCI	0.072	0.077			
Condition	Fair	Fair			

Trail Condition TOTALS

Deferred Maintenance	CRV	FCI	Condition
\$51800	\$717900	0.072	Fair

TRAIL DEFICIENCY



Trail Name: Grassy Creek Trail

Refuge Name: Crab Orchard NWR

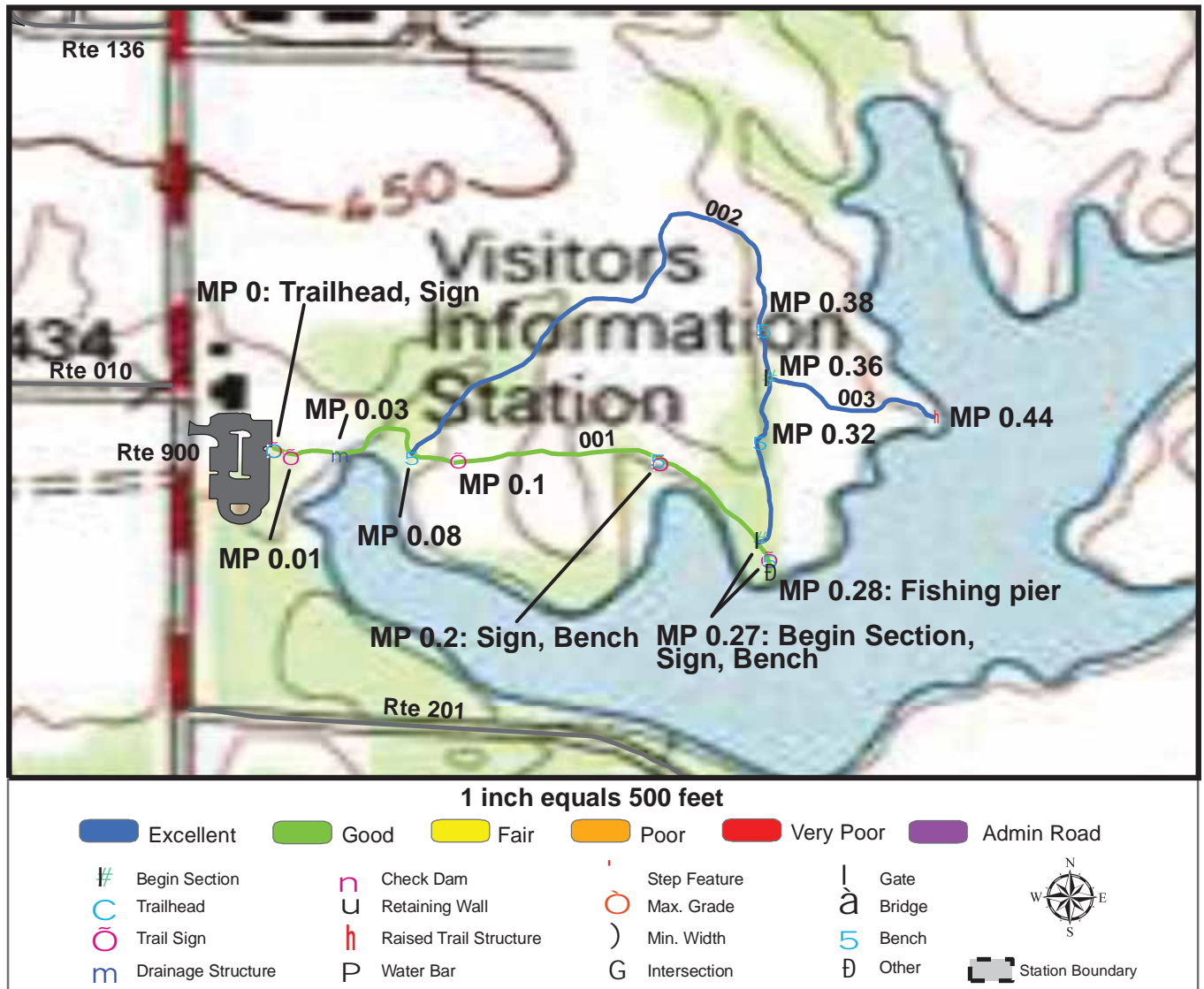
Trail Number: T400

Region: 3

TOTAL LENGTH: 1.64 Miles

Mile Post	0.01	1.19		
Section Number	001	002		
Photo Number	0958	N/A		
Deficiency	Other	Other		
Action	Repair	Repair		
Item	Tread -sf	Tread -sf		
Quantity	14397	1278		
Deferred Maintenance	\$47500	\$4300		

TRAIL CONDITION



Trail Name: Woodland Nature Trail

Refuge Name: Crab Orchard NWR

Trail Number: T500

Region: 3

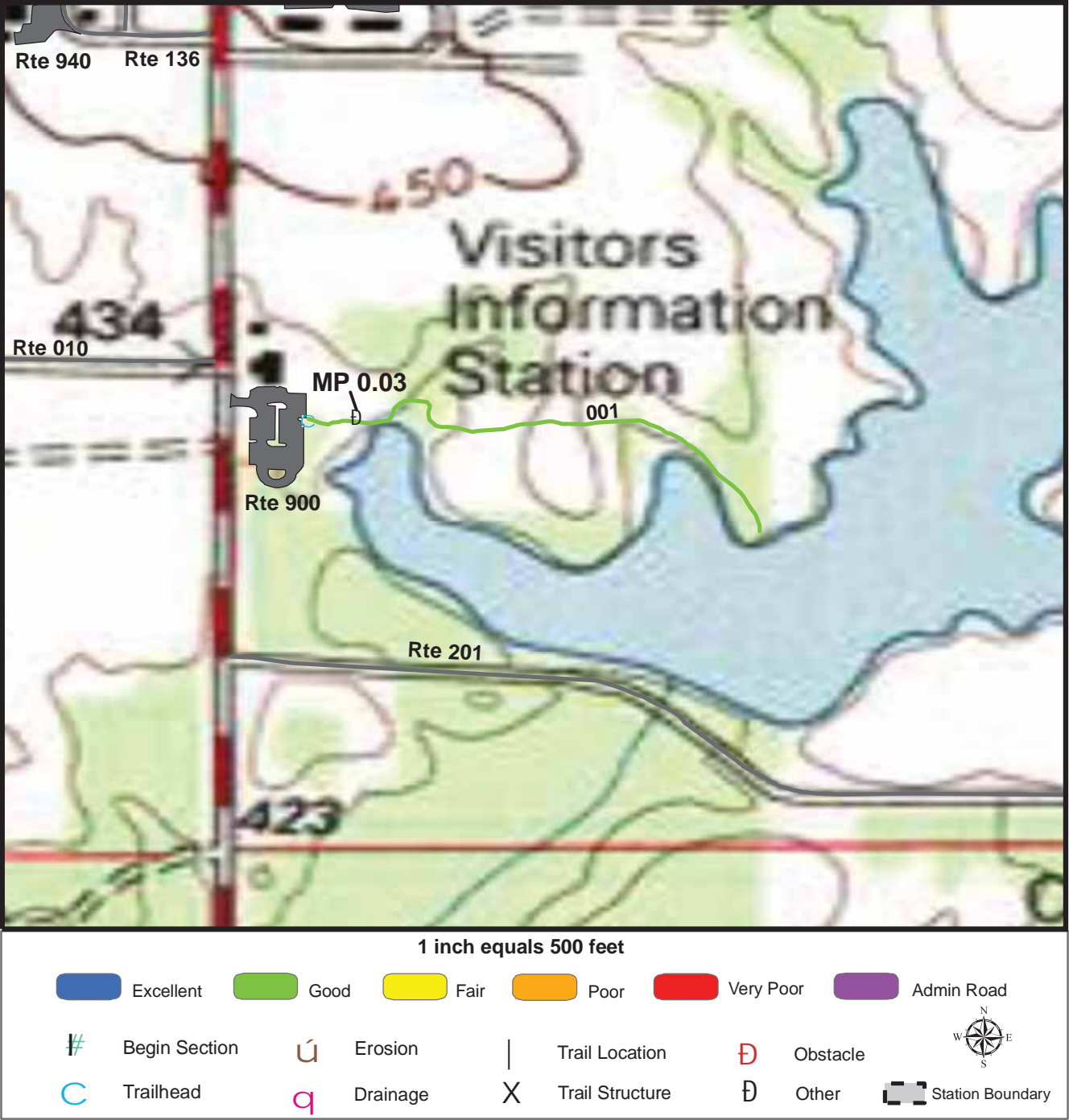
TOTAL LENGTH: 0.77 Miles

Section Number	001	002	003		
Section Length (miles)	0.28	0.41	0.08		
SAMMS Number	N/A	N/A	N/A		
Rating Date	10/19/2006	10/19/2006	10/19/2006		
Trail Section Information					
Trail Class	TC5	TC4	TC3		
Surface Type	Asphalt	Gravel	Gravel		
Surface Firmness	Paved	Firm	Firm		
Width (inches)	60	60	30		
Average Grade (%)	3	3	3		
Average X-slope (%)	0.8	0.8	0.8		
Trail Condition Information					
Deferred Maintenance	\$1200	\$0	\$0		
CRV	\$53000	\$55600	\$5800		
FCI	0.023	0	0		
Condition	Good	Excellent	Excellent		

Trail Condition TOTALS

Deferred Maintenance	CRV	FCI	Condition
\$1200	\$114400	0.01	Excellent

TRAIL DEFICIENCY



Trail Name: Woodland Nature Trail

Refuge Name: Crab Orchard NWR

Trail Number: T500

Region: 3

TOTAL LENGTH: 0.77 Miles

Mile Post	0.03			
Section Number	001			
Photo Number	0925			
Deficiency	Other			
Action	Repair			
Item	Tread -sf			
Quantity	364			
Deferred Maintenance	\$1200			

PHOTOGRAPHIC SHEET

TRAIL NUMBER: **T300**

STATION: Crab Orchard NWR

DATE: 10/19/2006



Photo # 0935 - MP 0.0 - Trailhead

TRAIL NUMBER: **T300**

STATION: Crab Orchard NWR

DATE: 10/19/2006



Photo # 0936-8 - MP 0.01 - Sign

PHOTOGRAPHIC SHEET

TRAIL NUMBER: **T300**

STATION: Crab Orchard NWR

DATE: 10/19/2006



Photo # 0939 - MP 0.14 - Begin Section 002

TRAIL NUMBER: **T300**

STATION: Crab Orchard NWR

DATE: 10/19/2006



Photo # 0942 - MP 0.3 - Boardwalk

PHOTOGRAPHIC SHEET

TRAIL NUMBER: **T300**

STATION: Crab Orchard NWR

DATE: 10/19/2006



Photo # 0943 - MP 0.33 - Sign

TRAIL NUMBER: **T300**

STATION: Crab Orchard NWR

DATE: 10/19/2006



Photo # 0946 - MP 0.6 - Begin Section 003

PHOTOGRAPHIC SHEET

TRAIL NUMBER: T301

STATION: Crab Orchard NWR

DATE: 10/19/2006



Photo # 0948 - MP 0.0 - Trailhead

TRAIL NUMBER: T301

STATION: Crab Orchard NWR

DATE: 10/19/2006



Photo # 0947 - MP 0.0 - Sign

PHOTOGRAPHIC SHEET

TRAIL NUMBER: **T302**

STATION: Crab Orchard NWR

DATE: 10/19/2006



Photo # 0951 - MP 0.0 - Trailhead

TRAIL NUMBER: **T302**

STATION: Crab Orchard NWR

DATE: 10/19/2006



Photo # 0949 - MP 0.0 - Sign

PHOTOGRAPHIC SHEET

TRAIL NUMBER: **T303**

STATION: Crab Orchard NWR

DATE: 10/19/2006



Photo # 1868 - MP 0.0 - Trailhead, Sign

TRAIL NUMBER: **T303**

STATION: Crab Orchard NWR

DATE: 10/19/2006



Photo # 1870 - MP 0.0 - Sign (Grouped feature)

PHOTOGRAPHIC SHEET

TRAIL NUMBER: **T303**

STATION: Crab Orchard NWR

DATE: 10/19/2006



Photo # 1872 - MP 0.49 - Sign

TRAIL NUMBER: **T303**

STATION: Crab Orchard NWR

DATE: 10/19/2006



Photo # 0966 - MP 0.56 - Sign

PHOTOGRAPHIC SHEET

TRAIL NUMBER: **T303**

STATION: Crab Orchard NWR

DATE: 10/19/2006



Photo # 1875 - MP 1.51 - Begin Section 002

TRAIL NUMBER: **T303**

STATION: Crab Orchard NWR

DATE: 10/19/2006



Photo # 1876 - MP 1.69 - Boardwalk

PHOTOGRAPHIC SHEET

TRAIL NUMBER: **T303**

STATION: Crab Orchard NWR

DATE: 10/19/2006



Photo # 1877 - MP 1.72 - Boardwalk

TRAIL NUMBER: **T303**

STATION: Crab Orchard NWR

DATE: 10/19/2006



Photo # 1878 - MP 1.97 - Sign

PHOTOGRAPHIC SHEET

TRAIL NUMBER: **T304**

STATION: Crab Orchard NWR

DATE: 10/19/2006



Photo # 0961 - MP 0.0 - Trailhead, Sign (Grouped feature)

TRAIL NUMBER: **T304**

STATION: Crab Orchard NWR

DATE: 10/19/2006



Photo # 0960 - MP 0.0 - Sign

PHOTOGRAPHIC SHEET

TRAIL NUMBER: **T304**

STATION: Crab Orchard NWR

DATE: 10/19/2006



Photo # 0962 - MP 0.0 - Sign (Grouped feature)

TRAIL NUMBER: **T304**

STATION: Crab Orchard NWR

DATE: 10/19/2006



Photo # 0963 - MP 0.01 - Bridge

PHOTOGRAPHIC SHEET

TRAIL NUMBER: **T304**

STATION: Crab Orchard NWR

DATE: 10/19/2006



Photo # 0964 - MP 0.17 - Begin Section 003

TRAIL NUMBER: **T304**

STATION: Crab Orchard NWR

DATE: 10/19/2006



Photo # 0967 - MP 0.44 - Begin Section 004

PHOTOGRAPHIC SHEET

TRAIL NUMBER: **T304**

STATION: Crab Orchard NWR

DATE: 10/19/2006



Photo # 0968 - MP 0.66 - Bridge

TRAIL NUMBER: **T304**

STATION: Crab Orchard NWR

DATE: 10/19/2006



Photo # 0972 - MP 1.24 - Bridge

PHOTOGRAPHIC SHEET

TRAIL NUMBER: **T304**

STATION: Crab Orchard NWR

DATE: 10/19/2006



Photo # 0973 - MP 1.31 - Boardwalk

TRAIL NUMBER: **T400**

STATION: Crab Orchard NWR

DATE: 10/19/2006



Photo # 0956 - MP 0.0 - Trailhead

PHOTOGRAPHIC SHEET

TRAIL NUMBER: **T400**

STATION: Crab Orchard NWR

DATE: 10/19/2006



Photo # 0958 - MP 0.01 - Other Deficiency

TRAIL NUMBER: **T400**

STATION: Crab Orchard NWR

DATE: 10/19/2006



Photo # 0957 - MP 1.19 - Begin Section 002

PHOTOGRAPHIC SHEET

TRAIL NUMBER: **T500**

STATION: Crab Orchard NWR

DATE: 10/19/2006



Photo # 0922 - MP 0.0 - Trailhead

TRAIL NUMBER: **T500**

STATION: Crab Orchard NWR

DATE: 10/19/2006

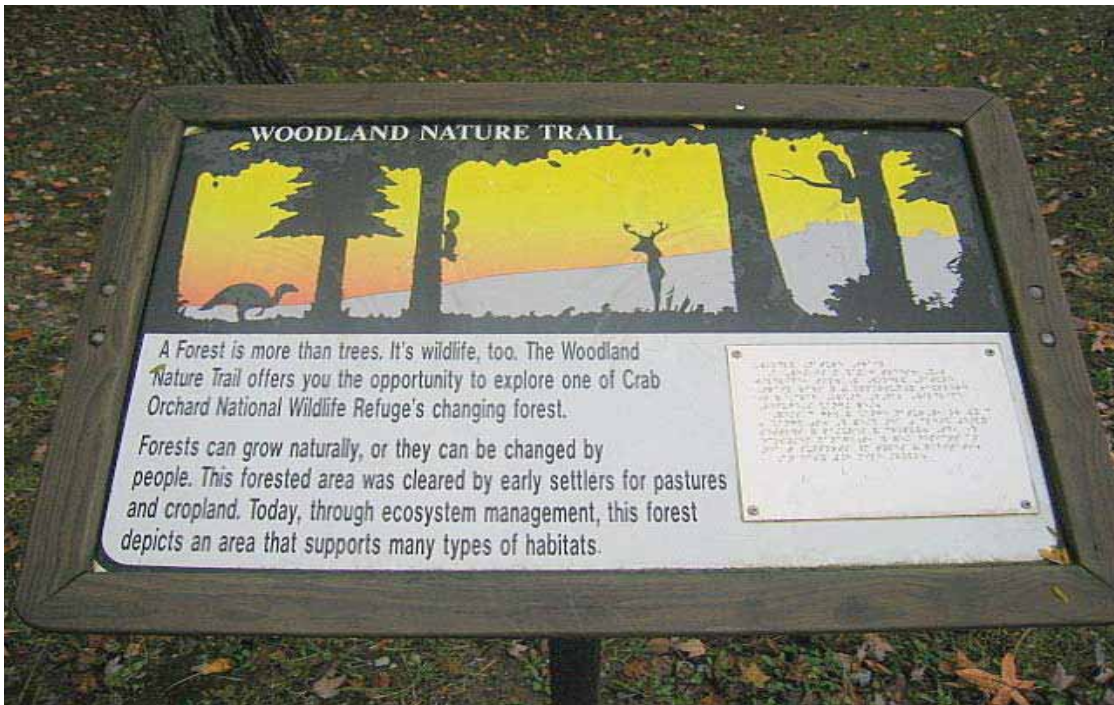


Photo # 0921 - MP 0.0 - Sign

PHOTOGRAPHIC SHEET

TRAIL NUMBER: **T500**

STATION: Crab Orchard NWR

DATE: 10/19/2006



Photo # 0923 - MP 0.01 - Sign

TRAIL NUMBER: **T500**

STATION: Crab Orchard NWR

DATE: 10/19/2006



Photo # 0925 - MP 0.03 - Other Deficiency

PHOTOGRAPHIC SHEET

TRAIL NUMBER: T500

STATION: Crab Orchard NWR

DATE: 10/19/2006



Photo # 0926 - MP 0.1 - Sign

TRAIL NUMBER: T500

STATION: Crab Orchard NWR

DATE: 10/19/2006

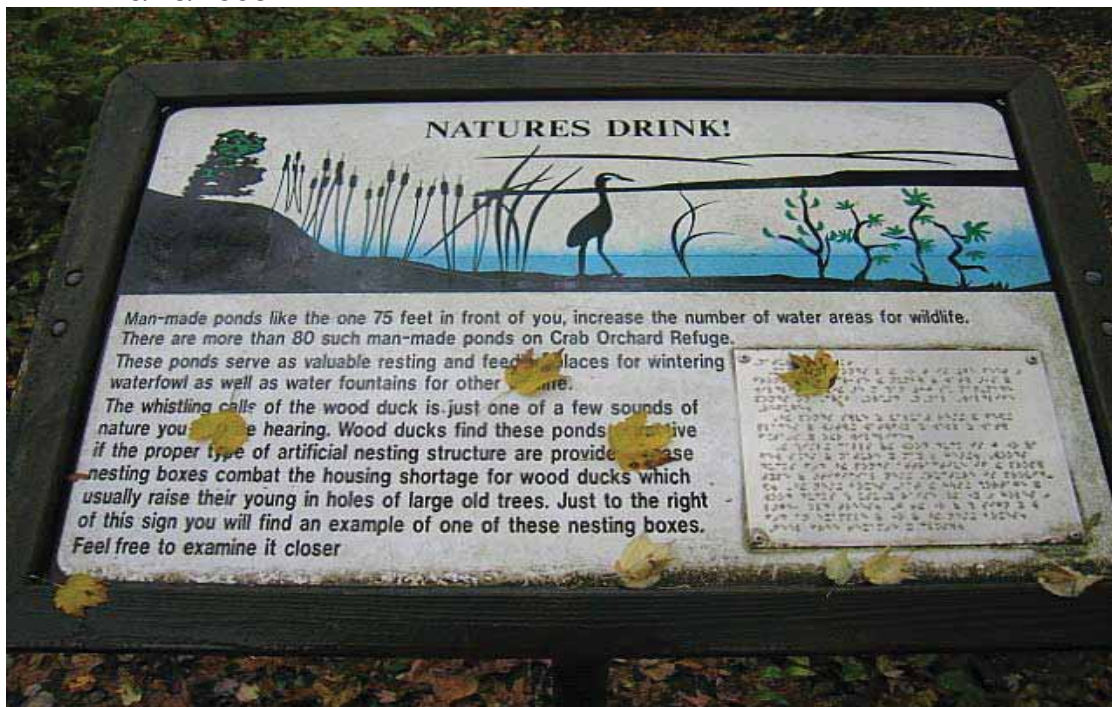


Photo # 0927 - MP 0.2 - Sign

PHOTOGRAPHIC SHEET

TRAIL NUMBER: **T500**

STATION: Crab Orchard NWR

DATE: 10/19/2006

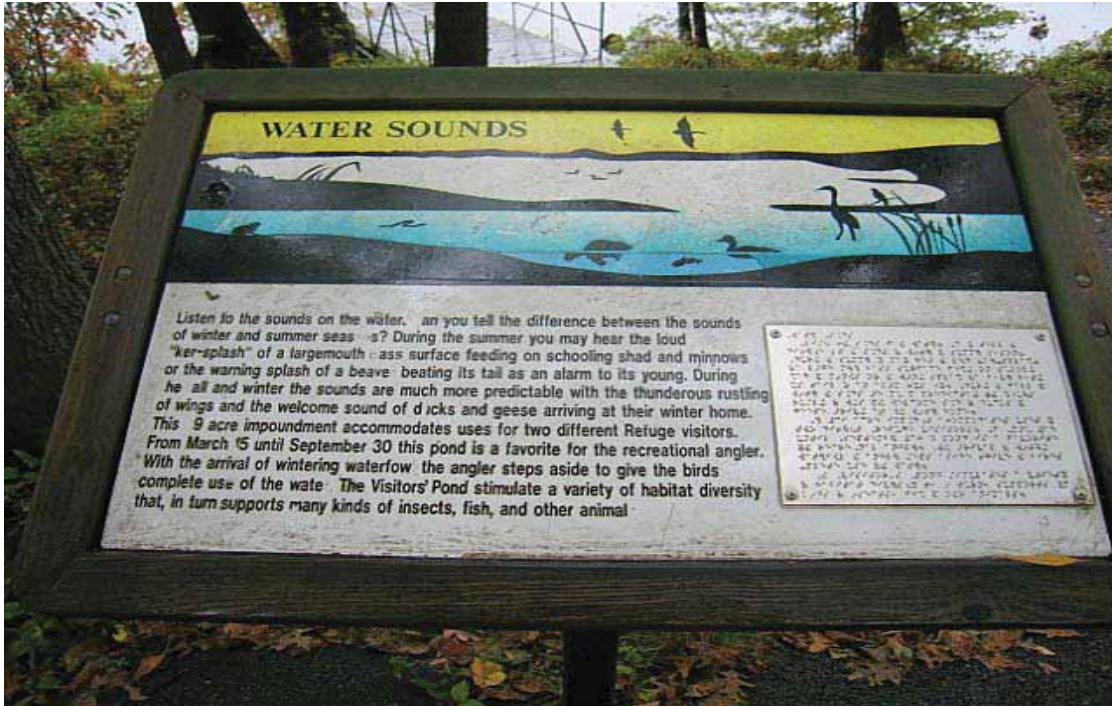


Photo # 0928 - MP 0.27 - Sign

TRAIL NUMBER: **T500**

STATION: Crab Orchard NWR

DATE: 10/19/2006



Photo # 0932 - MP 0.27 - Begin Section 002

PHOTOGRAPHIC SHEET

TRAIL NUMBER: **T500**

STATION: Crab Orchard NWR

DATE: 10/19/2006



Photo # 0933 - MP 0.36 - Begin Section 003

The Trail Inventory of Cypress Creek National Wildlife Refuge Ullin, Illinois



**Prepared By:
Federal Highway Administration
Central Federal Lands Highway Division
October 2006**



Cypress Creek NWR

Trail and Trail Feature Summaries

Trail Miles and Percentages by Surface Type and Condition

Trail Surface Type	Mileage by Trail Condition												Total Miles
	Excellent		Good		Fair		Poor		Very Poor		Not Rated*		
	MILES	%	MILES	%	MILES	%	MILES	%	MILES	%	MILES	%	
Native	1.05	44%		0%	0.44	18%		0%		0%		0%	1.49
Gravel		0%		0%		0%		0%		0%		0%	0.00
Asphalt		0%		0%		0%		0%		0%		0%	0.00
Concrete		0%		0%		0%		0%		0%		0%	0.00
Turnpike		0%		0%		0%		0%		0%		0%	0.00
Boardwalk	0.07	3%		0%		0%		0%		0%		0%	0.07
Puncheon		0%		0%		0%		0%		0%		0%	0.00
Woodchips		0%		0%		0%		0%		0%		0%	0.00
Mowed		0%	0.15	6%		0%		0%	0.70	29%		0%	0.85
Admin Road		0%		0%		0%		0%		0%		0%	0.00
Other		0%		0%		0%		0%		0%		0%	0.00
Totals	1.12	46%	0.15	6%	0.44	18%	0.00	0%	0.70	29%	0.00	0%	2.41

Trail Miles and Percentages by Trail Classification and Condition

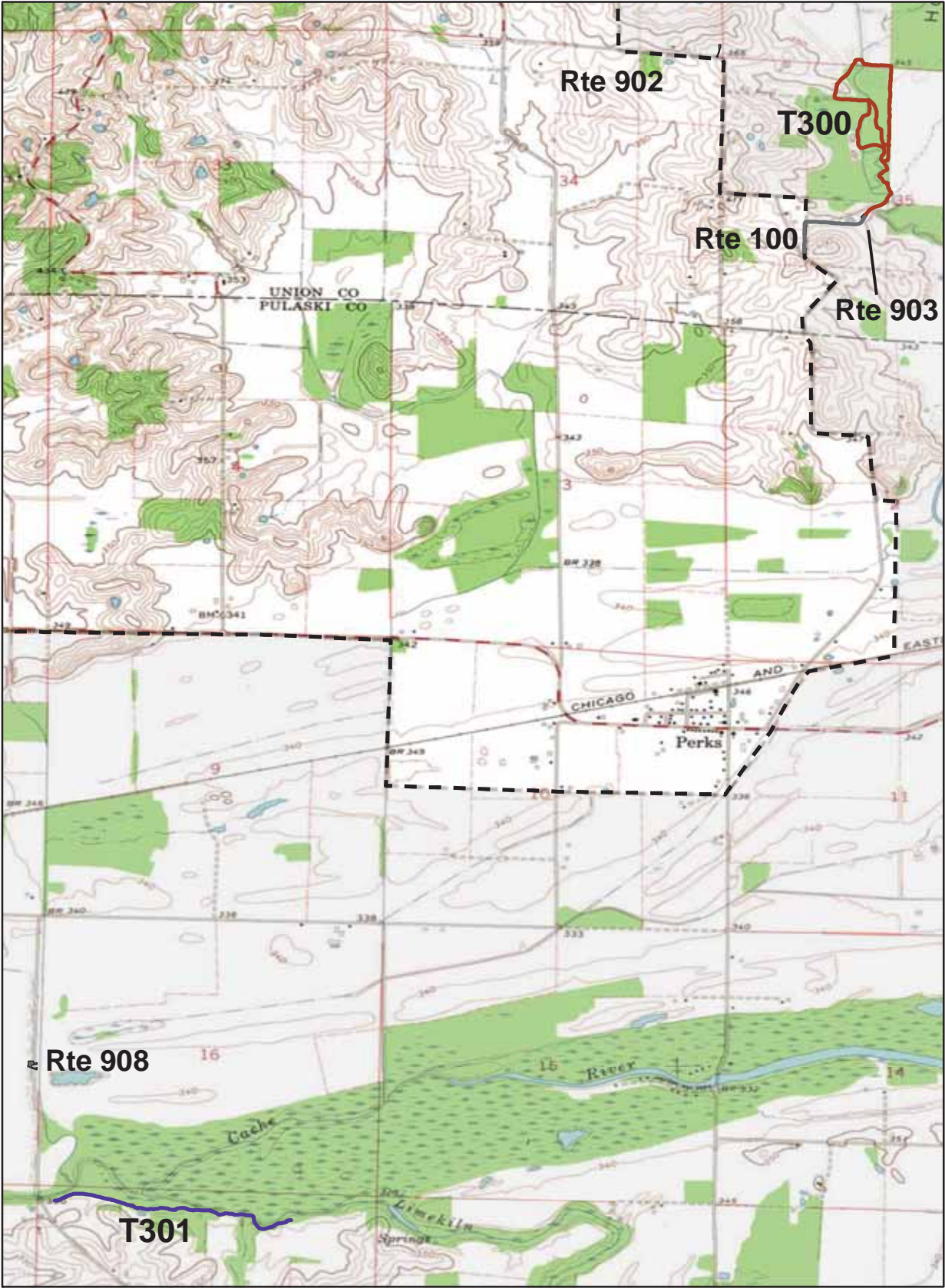
Trail Classification n	Mileage by Trail Condition												Total Miles
	Excellent		Good		Fair		Poor		Very Poor		Not Rated*		
	MILES	%	MILES	%	MILES	%	MILES	%	MILES	%	MILES	%	
TC1		0%		0%		0%		0%		0%		0%	0.00
TC2		0%		0%		0%		0%		0%		0%	0.00
TC3	1.05	44%	0.15	6%	0.44	18%		0%	0.70	29%		0%	2.34
TC4		0%		0%		0%		0%		0%		0%	0.00
TC5	0.07	3%		0%		0%		0%		0%		0%	0.07
Totals	1.12	46%	0.15	6%	0.44	18%	0.00	0%	0.70	29%	0.00	0%	2.41

* Admin Roads are included in the inventory but are not rated for condition.

Trail Features

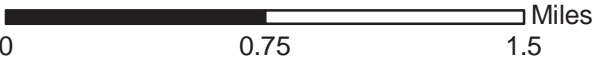
Trail Number	Feature Type	Quantity	Grouped Feature	Milepost	Photo
T300	Sign	2	No	0.10	1839
T300	Bridge -sf	360	No	0.11	1837
T300	Gate	1	No	0.11	N/A
T300	Sign	1	No	0.11	1840
T300	Sign	1	No	0.11	1838
T300	Sign	15	Yes	0.15	1841
T300	Sign	11	Yes	0.15	1841
T300	Bench	1	No	0.42	N/A
T300	Bridge -sf	150	No	0.59	1843
T300	Boardwalk -lf	90	No	0.70	1844
T300	Bench	2	No	0.75	N/A
T300	Bridge -sf	450	No	0.86	1847
T300	Bench	1	No	1.38	N/A
T301	Step: Log -each	13	Yes	0.47	N/A
sf-square feet lf-linear feet cf-cubic feet					

CYPRESS CREEK NATIONAL WILDLIFE REFUGE TRAIL LOCATION MAP



 Station Boundary

@ HQ/VC



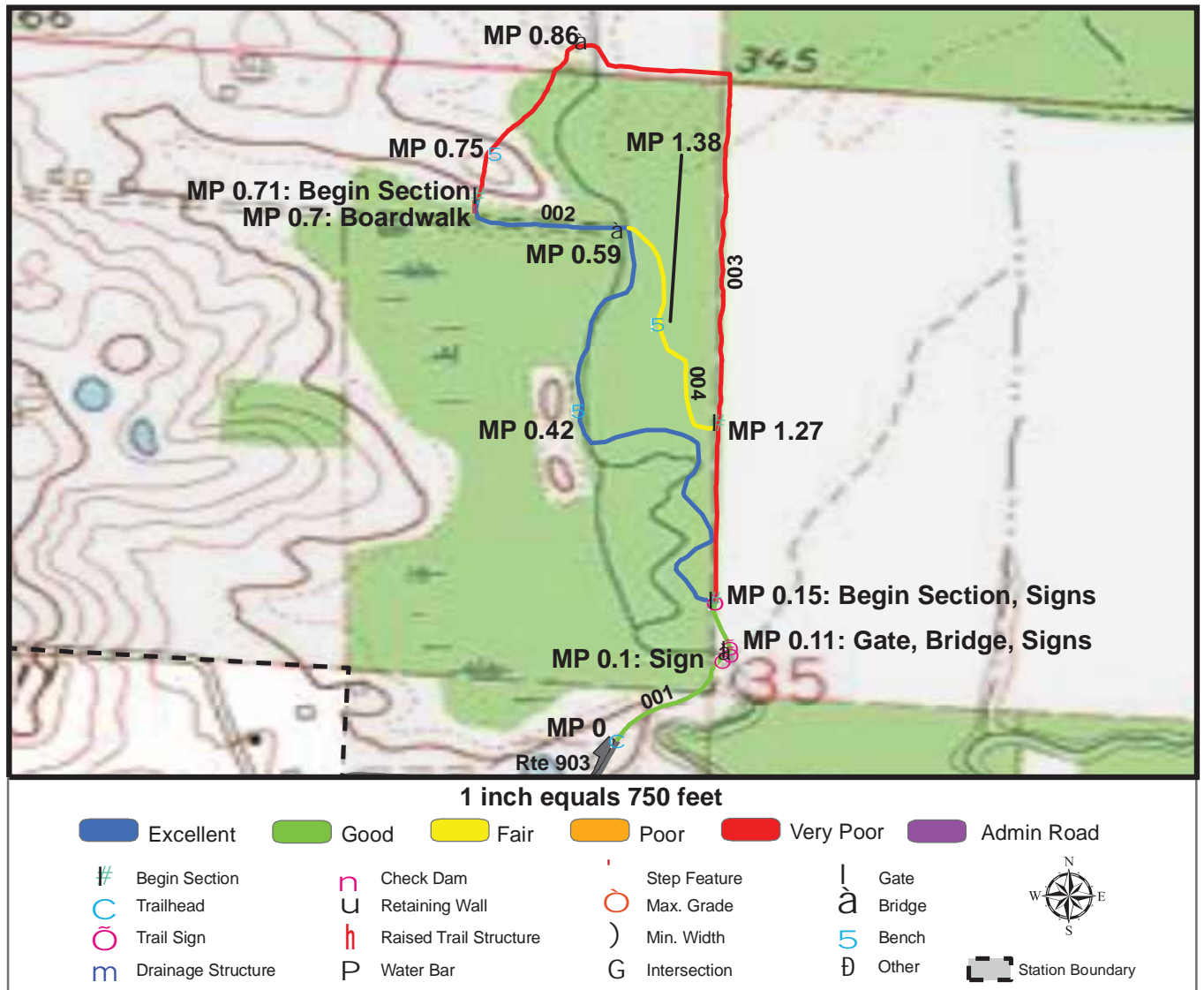
TRAILS ID

Station Name: Cypress Creek NWR

Org. Code: 32630

Trail #	Trail Name	Surface Type	SAMMS	Trail Mileage	Trail Description (Begin and End point of trail)
T300	Hickory Bottoms Trail	Native, Mowed	10012666	1.61	From Hickory Bottoms Parking (Rte 903) to end of loop
T301	Llimekiln Springs Trail	Native, Boardwalk	10045689	0.80	From Cache Chapel Rd. turnout to NWR boundary sign

TRAIL CONDITION



Trail Name: Hickory Bottoms Trail

Refuge Name: Cypress Creek NWR

Trail Number: T300

Region: 3

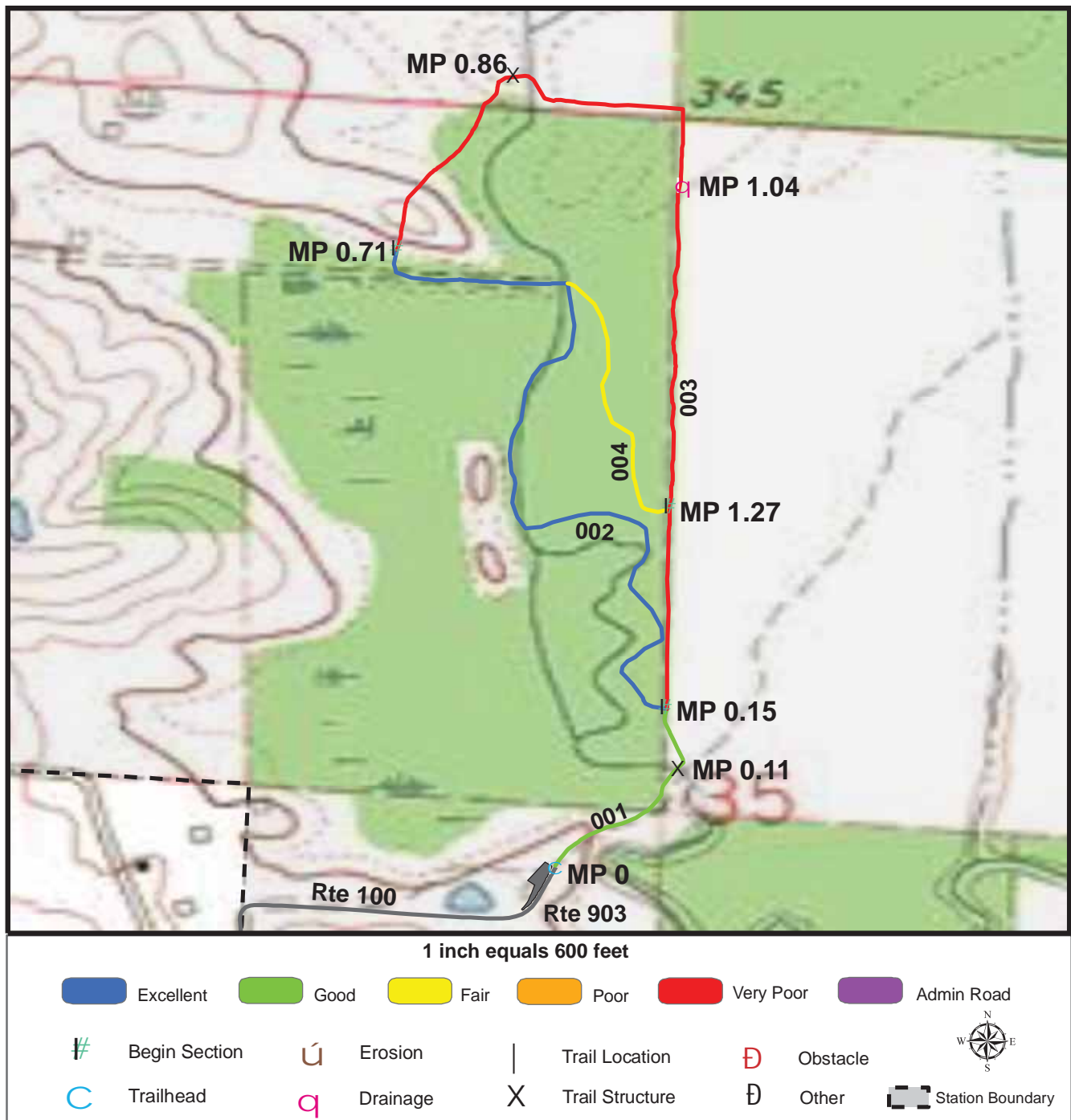
TOTAL LENGTH: 1.61 Miles

Section Number	001	002	003	004	
Section Length (miles)	0.15	0.56	0.7	0.2	
SAMMS Number	10012666	10012666	10012666	10012666	
Rating Date	10/18/2006	10/18/2006	10/18/2006	10/18/2006	
Trail Section Information					
Trail Class	TC3	TC3	TC3	TC3	
Surface Type	Mowed	Native	Mowed	Native	
Surface Firmness	Firm	Firm	Firm	Firm	
Width (inches)	85	50	100	50	
Average Grade (%)	4.8	4.8	4.8	4.8	
Average X-slope (%)	5.4	5.4	5.4	5.4	
Trail Condition Information					
Deferred Maintenance	\$800	\$0	\$28800	\$1900	
CRV	\$25549	\$59037	\$53716	\$17261	
FCI	0.032	0	0.537	0.109	
Condition	Good	Excellent	Very Poor	Fair	

Trail Condition TOTALS

Deferred Maintenance	CRV	FCI	Condition
\$31542	\$155565	0.203	Very Poor

TRAIL DEFICIENCY



Trail Name: Hickory Bottoms Trail

Refuge Name: Cypress Creek NWR

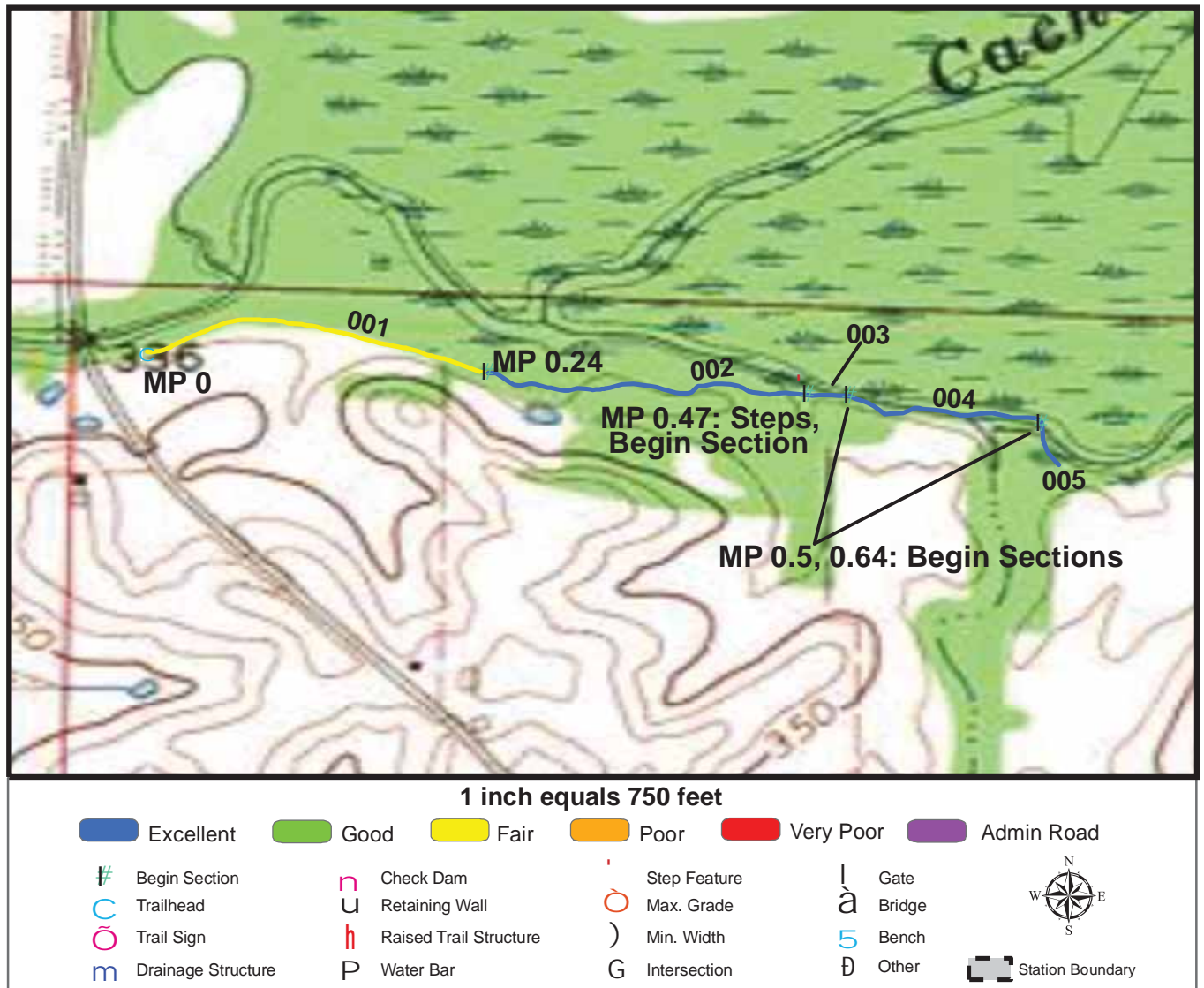
Trail Number: T300

Region: 3

TOTAL LENGTH: 1.61 Miles

Mile Post	0.11	0.86	1.04	
Section Number	001	003	004	
Photo Number	1837	1847	1849	
Deficiency	Trail Structure	Trail Structure	Drainage	
Action	Repair	Replace	Build/Add	
Item	Bridge -sf	Bridge -sf	Drainage Ditch -lf	
Quantity	30	450	500	
Deferred Maintenance	\$800	\$28800	\$1900	

TRAIL CONDITION



Trail Name: Limekiln Springs Trail

Refuge Name: Cypress Creek NWR

Trail Number: T301

Region: 3

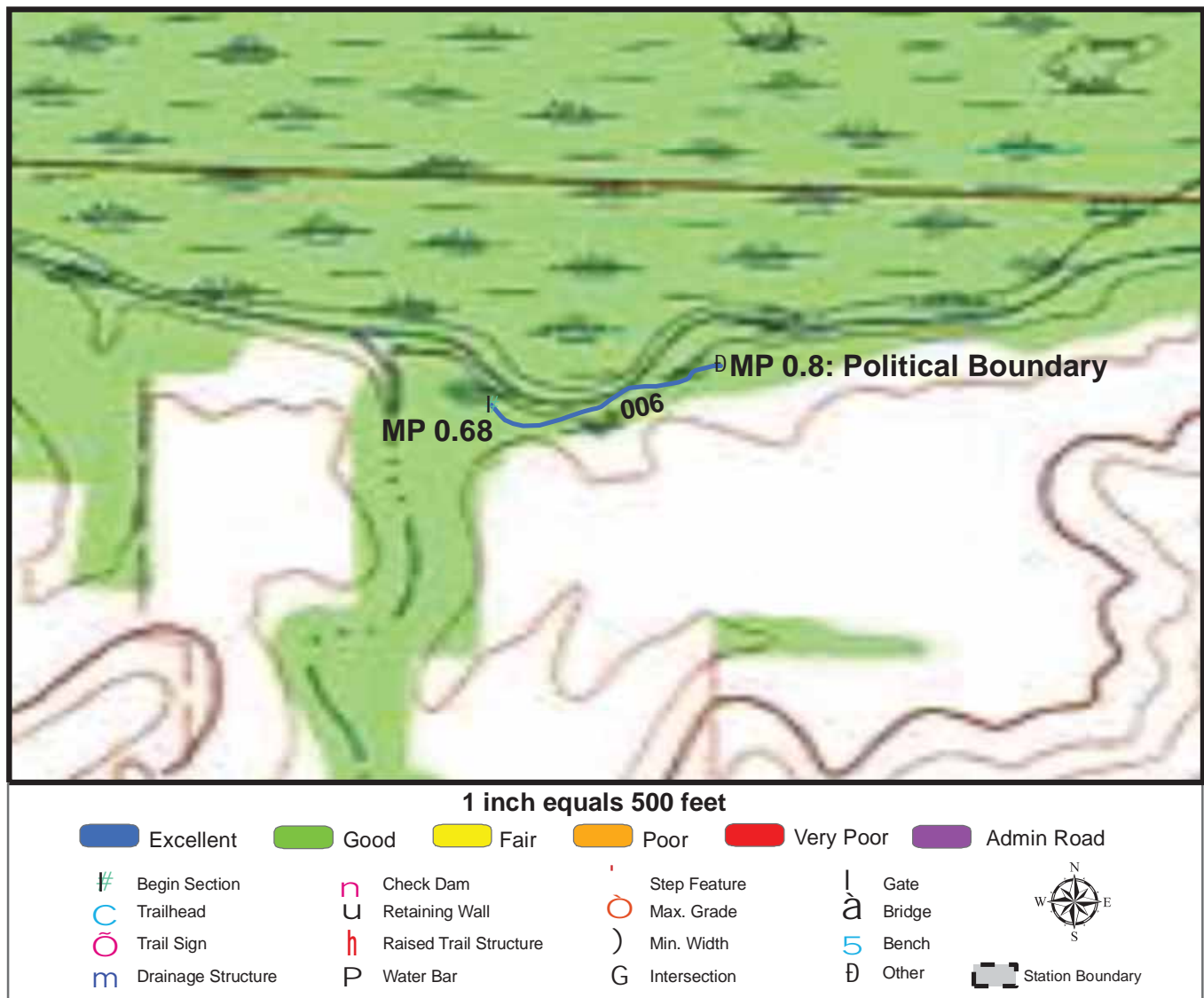
TOTAL LENGTH: 0.8 Miles

Section Number	001	002	003	004	005
Section Length (miles)	0.24	0.23	0.03	0.14	0.04
SAMMS Number	10045689	10045689	10045689	10045689	10045689
Rating Date	10/18/2006	10/18/2006	10/18/2006	10/18/2006	10/18/2006
Trail Section Information					
Trail Class	TC3	TC3	TC5	TC3	TC5
Surface Type	Native	Native	Boardwalk	Native	Boardwalk
Surface Firmness	Firm	Firm	Hard	Firm	Hard
Width (inches)	72	24	48	18	48
Average Grade (%)	10.9	10.9	10.9	10.9	10.9
Average X-slope (%)	5.5	5.5	5.5	5.5	5.5
Trail Condition Information					
Deferred Maintenance	\$1917	\$0	\$0	\$0	\$0
CRV	\$30337	\$10622	\$12653	\$4304	\$17170
FCI	0.063	0	0	0	0
Condition	Fair	Excellent	Excellent	Excellent	Excellent

Trail Condition TOTALS

Deferred Maintenance	CRV	FCI	Condition
\$1917	\$77512	0.025	Good

TRAIL CONDITION



Trail Name: Limekiln Springs Trail

Refuge Name: Cypress Creek NWR

Trail Number: T301

Region: 3

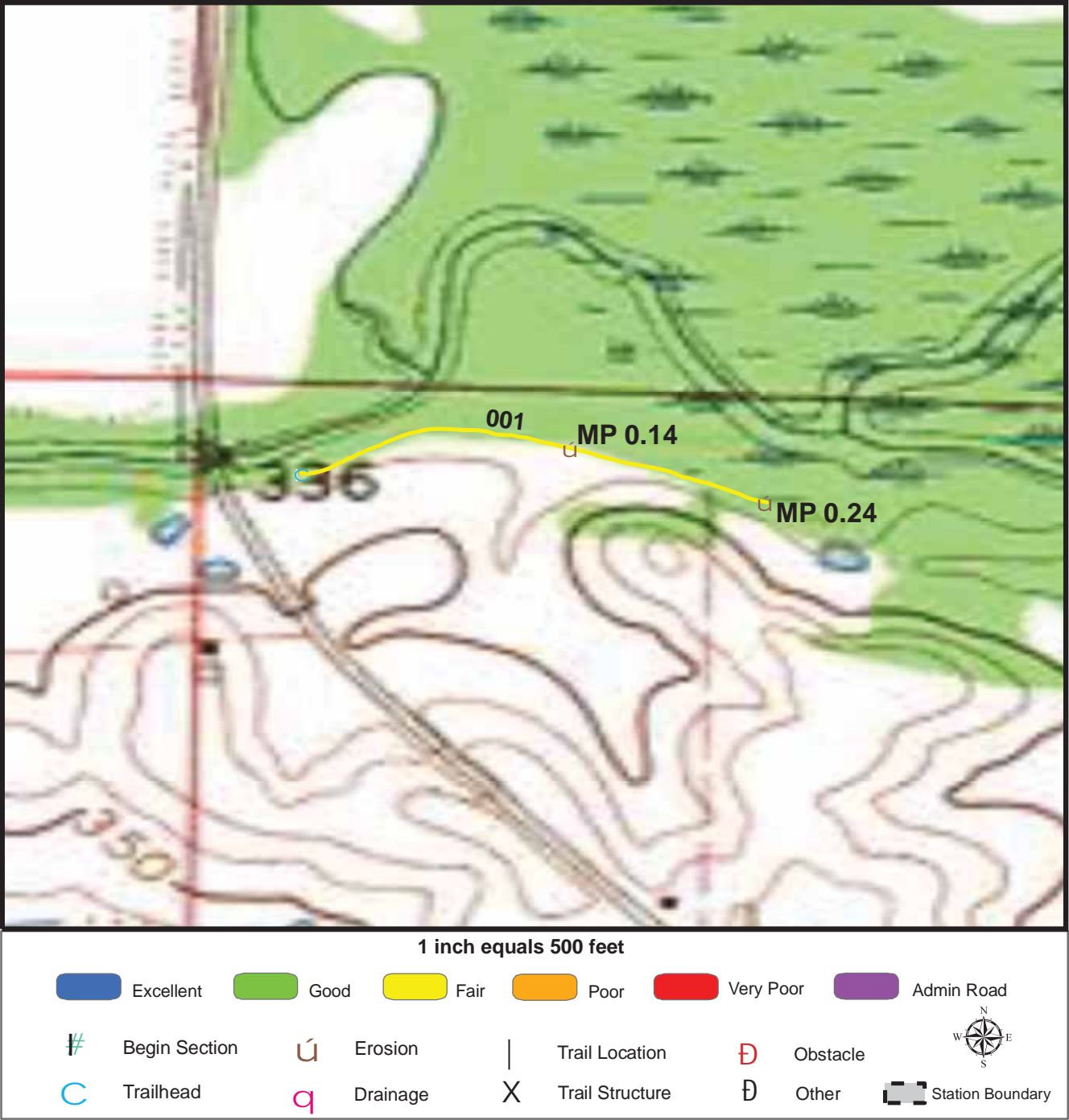
TOTAL LENGTH: 0.8 Miles

Section Number	006				
Section Length (miles)	0.12				
SAMMS Number	10045689				
Rating Date	10/18/2006				
Trail Section Information					
Trail Class	TC3				
Surface Type	Native				
Surface Firmness	Firm				
Width (inches)	12				
Average Grade (%)	10.9				
Average X-slope (%)	5.5				
Trail Condition Information					
Deferred Maintenance	\$0				
CRV	\$2423				
FCI	0				
Condition	Excellent				

Trail Condition TOTALS

Deferred Maintenance	CRV	FCI	Condition
\$1917	\$77512	0.025	Good

TRAIL DEFICIENCY



Trail Name: Limekiln Springs Trail

Refuge Name: Cypress Creek NWR

Trail Number: T301

Region: 3

TOTAL LENGTH: 0.8 Miles

Mile Post	0.14	0.24		
Section Number	001	001		
Photo Number	1852	1854		
Deficiency	Erosion	Erosion		
Action	Build/Add	Build/Add		
Item	Culvert -lf	Culvert -lf		
Quantity	10	10		
Deferred Maintenance	\$1000	\$1000		

PHOTOGRAPHIC SHEET

TRAIL NUMBER: **T300**

STATION: Cypress Creek NWR

DATE: 10/18/2006



Photo # 1836 - MP 0.0 - Trailhead

TRAIL NUMBER: **T300**

STATION: Cypress Creek NWR

DATE: 10/18/2006



Photo # 1839 - MP 0.1 - Sign

PHOTOGRAPHIC SHEET

TRAIL NUMBER: **T300**

STATION: Cypress Creek NWR

DATE: 10/18/2006



Photo # 1837 - MP 0.11 - Trail Structure Deficiency, Bridge

TRAIL NUMBER: **T300**

STATION: Cypress Creek NWR

DATE: 10/18/2006



Photo # 1838 - MP 0.11 - Sign

PHOTOGRAPHIC SHEET

TRAIL NUMBER: **T300**

STATION: Cypress Creek NWR

DATE: 10/18/2006



Photo # 1840 - MP 0.11 - Sign

TRAIL NUMBER: **T300**

STATION: Cypress Creek NWR

DATE: 10/18/2006



Photo # 1841 - MP 0.15 - Sign (Grouped feature), Sign (Grouped feature)

PHOTOGRAPHIC SHEET

TRAIL NUMBER: **T300**

STATION: Cypress Creek NWR

DATE: 10/18/2006



Photo # 1842 - MP 0.15 - Begin Section 002

TRAIL NUMBER: **T300**

STATION: Cypress Creek NWR

DATE: 10/18/2006



Photo # 1843 - MP 0.59 - Bridge

PHOTOGRAPHIC SHEET

TRAIL NUMBER: **T300**

STATION: Cypress Creek NWR

DATE: 10/18/2006



Photo # 1844 - MP 0.7 - Boardwalk

TRAIL NUMBER: **T300**

STATION: Cypress Creek NWR

DATE: 10/18/2006



Photo # 1845 - MP 0.71 - Begin Section 003

PHOTOGRAPHIC SHEET

TRAIL NUMBER: **T300**

STATION: Cypress Creek NWR

DATE: 10/18/2006



Photo # 1847 - MP 0.86 - Trail Structure Deficiency, Bridge

TRAIL NUMBER: **T300**

STATION: Cypress Creek NWR

DATE: 10/18/2006



Photo # 1849 - MP 1.04 - Drainage Deficiency

PHOTOGRAPHIC SHEET

TRAIL NUMBER: **T301**

STATION: Cypress Creek NWR

DATE: 10/18/2006



Photo # 1850 - MP 0.0 - Trailhead

TRAIL NUMBER: **T301**

STATION: Cypress Creek NWR

DATE: 10/18/2006



Photo # 1852 - MP 0.14 - Erosion Deficiency

PHOTOGRAPHIC SHEET

TRAIL NUMBER: **T301**

STATION: Cypress Creek NWR

DATE: 10/18/2006



Photo # 1854 - MP 0.24 - Erosion Deficiency

TRAIL NUMBER: **T301**

STATION: Cypress Creek NWR

DATE: 10/18/2006



Photo # 1855 - MP 0.24 - Begin Section 002

PHOTOGRAPHIC SHEET

TRAIL NUMBER: **T301**

STATION: Cypress Creek NWR

DATE: 10/18/2006



Photo # 1856 - MP 0.47 - Begin Section 003

TRAIL NUMBER: **T301**

STATION: Cypress Creek NWR

DATE: 10/18/2006



Photo # 1860 - MP 0.5 - Begin Section 004

PHOTOGRAPHIC SHEET

TRAIL NUMBER: **T301**

STATION: Cypress Creek NWR

DATE: 10/18/2006



Photo # 1862 - MP 0.64 - Begin Section 005

TRAIL NUMBER: **T301**

STATION: Cypress Creek NWR

DATE: 10/18/2006



Photo # 1865 - MP 0.68 - Begin Section 006

PHOTOGRAPHIC SHEET

TRAIL NUMBER: T301

STATION: Cypress Creek NWR

DATE: 10/18/2006



Photo # 1866 - MP 0.8 - Political Boundary

The Trail Inventory of Emiquon National Wildlife Refuge Havana, Illinois



**Prepared By:
Federal Highway Administration
Central Federal Lands Highway Division
October 2006**



Emiquon NWR

Trail and Trail Feature Summaries

Trail Miles and Percentages by Surface Type and Condition

Trail Surface Type	Mileage by Trail Condition												Total Miles
	Excellent		Good		Fair		Poor		Very Poor		Not Rated*		
	MILES	%	MILES	%	MILES	%	MILES	%	MILES	%	MILES	%	
Native	0.68	58%		0%		0%		0%		0%		0%	0.68
Gravel		0%		0%		0%		0%		0%		0%	0.00
Asphalt		0%		0%		0%		0%		0%		0%	0.00
Concrete		0%		0%		0%		0%		0%		0%	0.00
Turnpike		0%		0%		0%		0%		0%		0%	0.00
Boardwalk		0%		0%		0%		0%		0%		0%	0.00
Puncheon		0%		0%		0%		0%		0%		0%	0.00
Woodchips		0%		0%		0%		0%		0%		0%	0.00
Mowed	0.29	25%		0%		0%		0%		0%		0%	0.29
Admin Road		0%		0%		0%		0%		0%	0.20	17%	0.20
Other		0%		0%		0%		0%		0%		0%	0.00
Totals	0.97	83%	0.00	0%	0.00	0%	0.00	0%	0.00	0%	0.20	17%	1.17

Trail Miles and Percentages by Trail Classification and Condition

Trail Classification	Mileage by Trail Condition												Total Miles
	Excellent		Good		Fair		Poor		Very Poor		Not Rated*		
	MILES	%	MILES	%	MILES	%	MILES	%	MILES	%	MILES	%	
TC1		0%		0%		0%		0%		0%		0%	0.00
TC2		0%		0%		0%		0%		0%		0%	0.00
TC3	0.97	83%		0%		0%		0%		0%	0.20	17%	1.17
TC4		0%		0%		0%		0%		0%		0%	0.00
TC5		0%		0%		0%		0%		0%		0%	0.00
Totals	0.97	83%	0.00	0%	0.00	0%	0.00	0%	0.00	0%	0.20	17%	1.17

* Admin Roads are included in the inventory but are not rated for condition.

Trail Features

Trail Number	Feature Type	Quantity	Grouped Feature	Milepost	Photo
T300	Bench	2	No	1.11	N/A
T300	Bridge -sf	1325	No	1.11	1933
T300	Sign	5	No	0.88	1935
T300	Lookout/Ob Deck	1	No	0.80	N/A
T300	Sign	1	No	0.20	1939
T300	Sign	10	Yes	0.01	1941
sf-square feet lf-linear feet cf-cubic feet					

The map shows a topographic view of the Havana, Illinois region. The Illinois River flows from the top right towards the bottom left. To the north of the river is the town of Waterford, and to the south is Isabel. Further south, the town of Eerton is visible. A red outline marks a specific site labeled 'T300'. This site is situated near the intersection of Rte 901 and Rte 900. The map features contour lines indicating elevation, as well as various roads and geographical features like 'Havanna Island' and 'White Oak'. The city of Havana is shown as a dense urban area on the right side of the map.



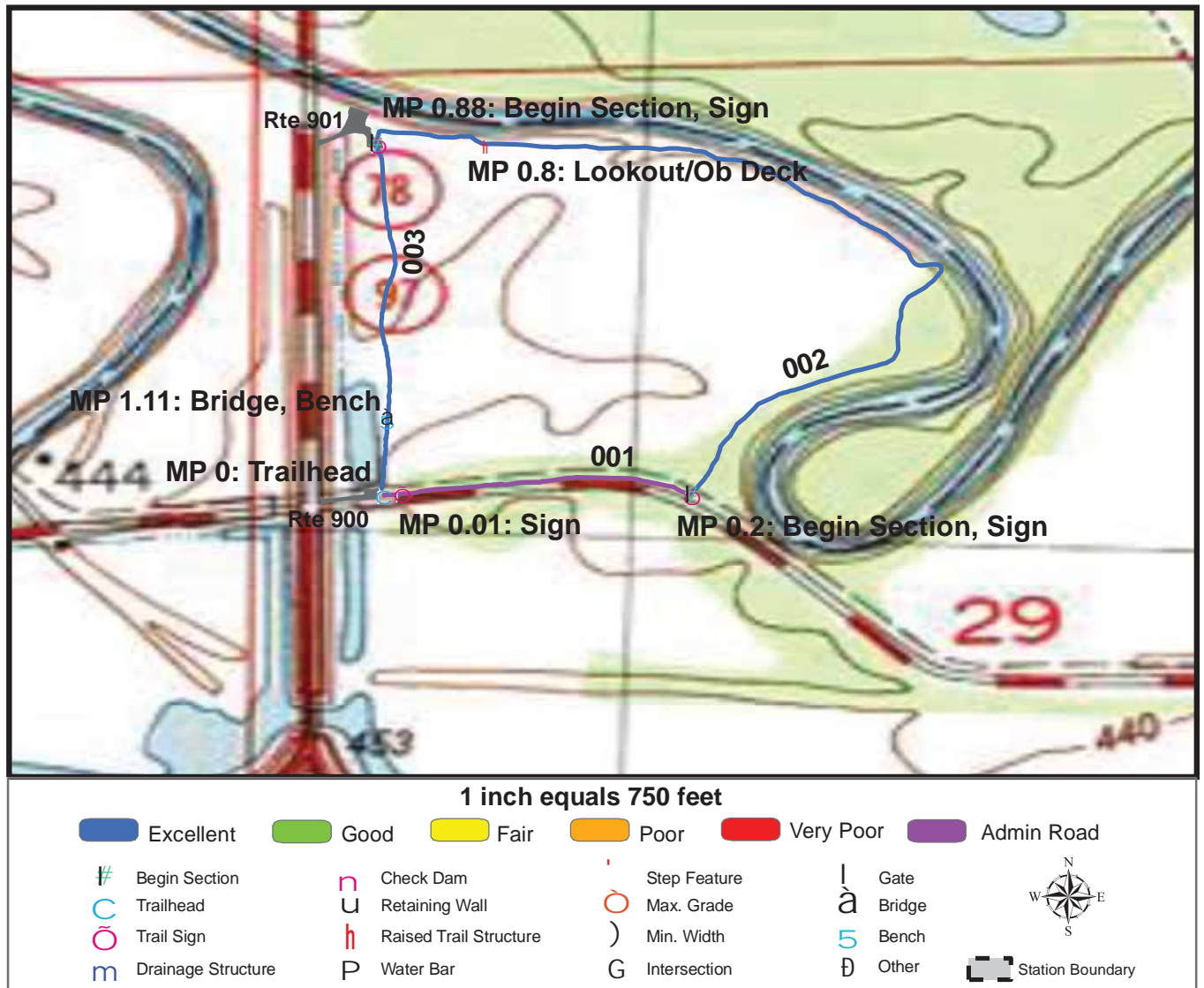
TRAILS ID

Station Name: Emiquon NWR

Org. Code: 33654

Trail #	Trail Name	Surface Type	SAMMS	Trail Mileage	Trail Description (Begin and End point of trail)
T300	Belle Rose Trail	Mowed, Native, Admin Road	10014055	1.17	From Parking Lot (Rte 900) to end of trail loop

TRAIL CONDITION



Trail Name: Belle Rose Trail

Refuge Name: Emiquon NWR

Trail Number: T300

Region: 3

TOTAL LENGTH: 1.17 Miles

Section Number	001	002	003		
Section Length (miles)	0.2	0.68	0.29		
SAMMS Number	10014055	10014055	10014055		
Rating Date	10/23/2006	10/23/2006	10/23/2006		
Trail Section Information					
Trail Class	TC3	TC3	TC3		
Surface Type	Admin Road	Native	Mowed		
Surface Firmness	Firm	Firm	Firm		
Width (inches)	96	84	180		
Average Grade (%)	2.8	2.8	2.8		
Average X-slope (%)	1.8	1.8	1.8		
Trail Condition Information					
Deferred Maintenance	\$0	\$0	\$0		
CRV	\$0	\$112900	\$102600		
FCI	0	0	0		
Condition	Not Rated	Excellent	Excellent		

Trail Condition TOTALS

Deferred Maintenance	CRV	FCI	Condition
\$0	\$215500	0	Excellent

PHOTOGRAPHIC SHEET

TRAIL NUMBER: **T300**

STATION: Emiquon NWR

DATE: 10/23/2006



Photo # 1936 - MP 0.0 - Trailhead

TRAIL NUMBER: **T300**

STATION: Emiquon NWR

DATE: 10/23/2006



Photo # 1941 - MP 0.01 - Sign (Grouped)

PHOTOGRAPHIC SHEET

TRAIL NUMBER: **T300**

STATION: Emiquon NWR

DATE: 10/23/2006



Photo # 1939 - MP 0.2 - Sign

TRAIL NUMBER: **T300**

STATION: Emiquon NWR

DATE: 10/23/2006



Photo # 1940 - MP 0.2 - Begin Section 002

PHOTOGRAPHIC SHEET

TRAIL NUMBER: **T300**

STATION: Emiquon NWR

DATE: 10/23/2006



Photo # 1934 - MP 0.88 - Begin Section 003

TRAIL NUMBER: **T300**

STATION: Emiquon NWR

DATE: 10/23/2006



Photo # 1935 - MP 0.88 - Sign

PHOTOGRAPHIC SHEET

TRAIL NUMBER: **T300**

STATION: Emiquon NWR

DATE: 10/23/2006



Photo # 1933 - MP 1.11 - Bridge

The Trail Inventory of Meredosia National Wildlife Refuge Havana, Illinois



**Prepared By:
Federal Highway Administration
Central Federal Lands Highway Division
October 2006**



Meredosia NWR

Trail and Trail Feature Summaries

Trail Miles and Percentages by Surface Type and Condition

Trail Surface Type	Mileage by Trail Condition												Total Miles
	Excellent		Good		Fair		Poor		Very Poor		Not Rated*		
	MILES	%	MILES	%	MILES	%	MILES	%	MILES	%	MILES	%	
Native		0%		0%		0%		0%		0%		0%	0.00
Gravel	0.12	80%		0%		0%		0%		0%		0%	0.12
Asphalt		0%		0%		0%		0%		0%		0%	0.00
Concrete		0%		0%		0%		0%		0%		0%	0.00
Turnpike		0%		0%		0%		0%		0%		0%	0.00
Boardwalk	0.03	20%		0%		0%		0%		0%		0%	0.03
Puncheon		0%		0%		0%		0%		0%		0%	0.00
Woodchips		0%		0%		0%		0%		0%		0%	0.00
Mowed		0%		0%		0%		0%		0%		0%	0.00
Admin Road		0%		0%		0%		0%		0%		0%	0.00
Other		0%		0%		0%		0%		0%		0%	0.00
Totals	0.15	100%	0.00	0%	0.00	0%	0.00	0%	0.00	0%	0.00	0%	0.15

Trail Miles and Percentages by Trail Classification and Condition

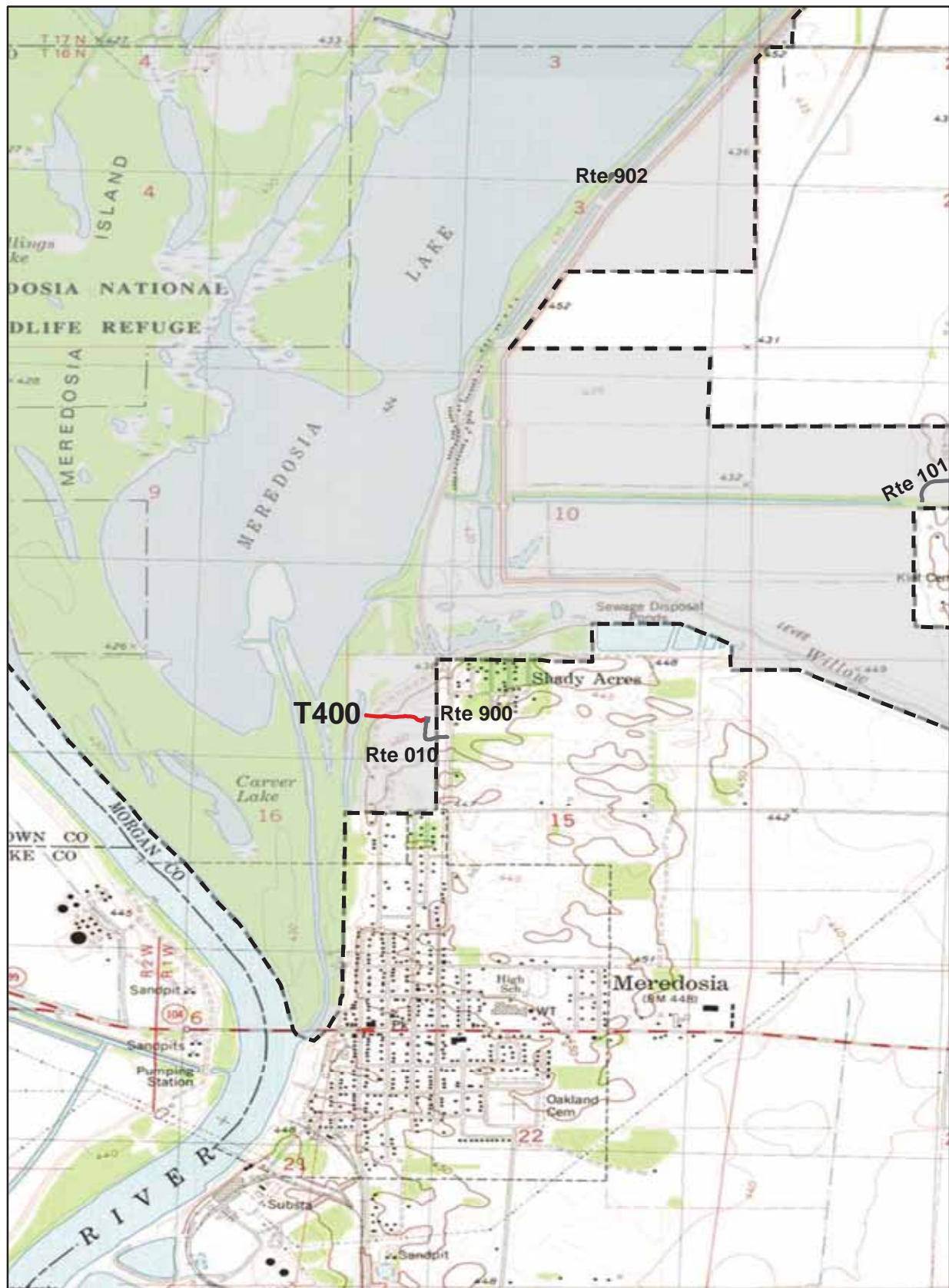
Trail Classification	Mileage by Trail Condition												Total Miles
	Excellent		Good		Fair		Poor		Very Poor		Not Rated*		
	MILES	%	MILES	%	MILES	%	MILES	%	MILES	%	MILES	%	
TC1		0%		0%		0%		0%		0%		0%	0.00
TC2		0%		0%		0%		0%		0%		0%	0.00
TC3		0%		0%		0%		0%		0%		0%	0.00
TC4	0.12	80%		0%		0%		0%		0%		0%	0.12
TC5	0.03	20%		0%		0%		0%		0%		0%	0.03
Totals	0.15	100%	0.00	0%	0.00	0%	0.00	0%	0.00	0%	0.00	0%	0.15

* Admin Roads are included in the inventory but are not rated for condition.

Trail Features

Trail Number	Feature Type	Quantity	Grouped Feature	Milepost	Photo
T400	Sign	5	No	0.00	1942
T400	Bench	1	No	0.00	N/A
T400	Lookout/Ob Deck	1	No	0.15	N/A
sf-square feet lf-linear feet cf-cubic feet					

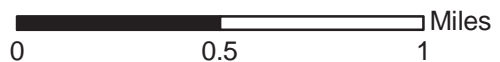
MEREDOSIA NATIONAL WILDLIFE REFUGE TRAIL LOCATION MAP



Station Boundary



HQ/VC



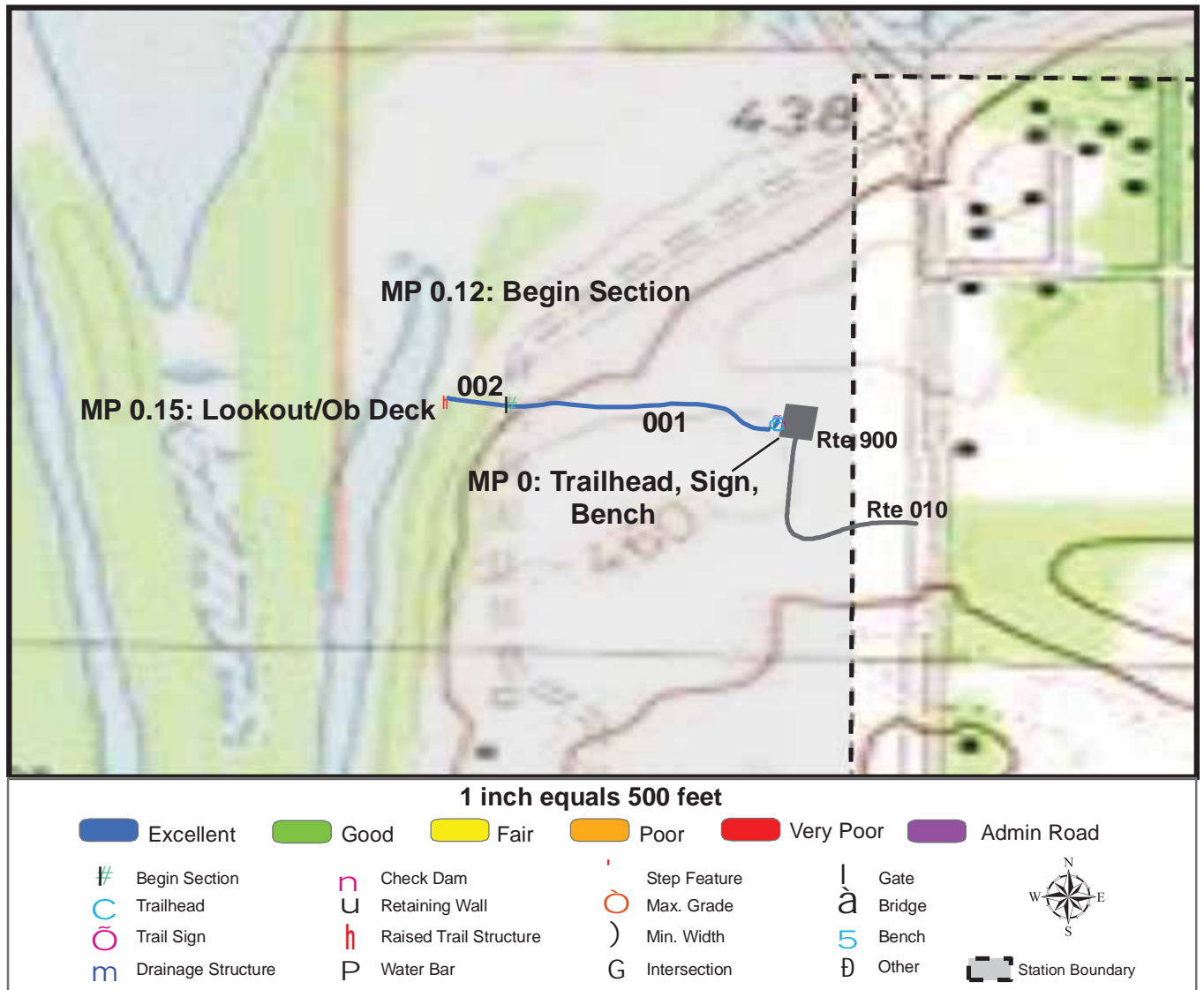
TRAILS ID

Station Name: Meredosia NWR

Org. Code: 33652

Trail #	Trail Name	Surface Type	SAMMS	Trail Mileage	Trail Description (Begin and End point of trail)
T400	Nature Trail	Gravel, Boardwalk	10014037, 10014039	0.15	From Nature Trail Parking (Rte 900) to end of trail

TRAIL CONDITION



Trail Name: Nature Trail

Refuge Name: Meredosia NWR

Trail Number: T400

Region: 3

TOTAL LENGTH: 0.15 Miles

Section Number	001	002			
Section Length (miles)	0.12	0.03			
SAMMS Number	10014037	10014039			
Rating Date	10/23/2006	10/23/2006			
Trail Section Information					
Trail Class	TC4	TC5			
Surface Type	Gravel	Boardwalk			
Surface Firmness	Hard	Hard			
Width (inches)	60	60			
Average Grade (%)	2.1	2.1			
Average X-slope (%)	1.1	1.1			
Trail Condition Information					
Deferred Maintenance	\$0	\$0			
CRV	\$15700	\$17600			
FCI	0	0			
Condition	Excellent	Excellent			

Trail Condition TOTALS

Deferred Maintenance	CRV	FCI	Condition
\$0	\$33300	0	Excellent

PHOTOGRAPHIC SHEET

TRAIL NUMBER: **T400**

STATION: Meredosia NWR

DATE: 10/23/2006



Photo # 1943 - MP 0.0 - Trailhead

TRAIL NUMBER: **T400**

STATION: Meredosia NWR

DATE: 10/23/2006



Photo # 1942 - MP 0.0 - Sign

PHOTOGRAPHIC SHEET

TRAIL NUMBER: **T400**

STATION: Meredosia NWR

DATE: 10/23/2006



Photo # 1945 - MP 0.12 - Begin Section 002

The Trail Inventory of Upper Mississippi National Wildlife & Fish Refuge – Savanna District Thomson, IL



**Prepared By:
Federal Highway Administration
Central Federal Lands Highway Division
September 2006**



Upper Mississippi National Wildlife & Fish Refuge - Savanna District

Trail and Trail Feature Summaries

Trail Miles and Percentages by Surface Type and Condition

Trail Surface Type	Mileage by Trail Condition												Total Miles
	Excellent		Good		Fair		Poor		Very Poor		Not Rated*		
	MILES	%	MILES	%	MILES	%	MILES	%	MILES	%	MILES	%	
Native		0%		0%		0%		0%		0%		0%	0.00
Gravel	1.78	100%		0%		0%		0%		0%		0%	1.78
Asphalt		0%		0%		0%		0%		0%		0%	0.00
Concrete		0%		0%		0%		0%		0%		0%	0.00
Turnpike		0%		0%		0%		0%		0%		0%	0.00
Boardwalk		0%		0%		0%		0%		0%		0%	0.00
Puncheon		0%		0%		0%		0%		0%		0%	0.00
Woodchips		0%		0%		0%		0%		0%		0%	0.00
Mowed		0%		0%		0%		0%		0%		0%	0.00
Admin Road		0%		0%		0%		0%		0%		0%	0.00
Other		0%		0%		0%		0%		0%		0%	0.00
Totals	1.78	100%	0.00	0%	0.00	0%	0.00	0%	0.00	0%	0.00	0%	1.78

Trail Miles and Percentages by Trail Classification and Condition

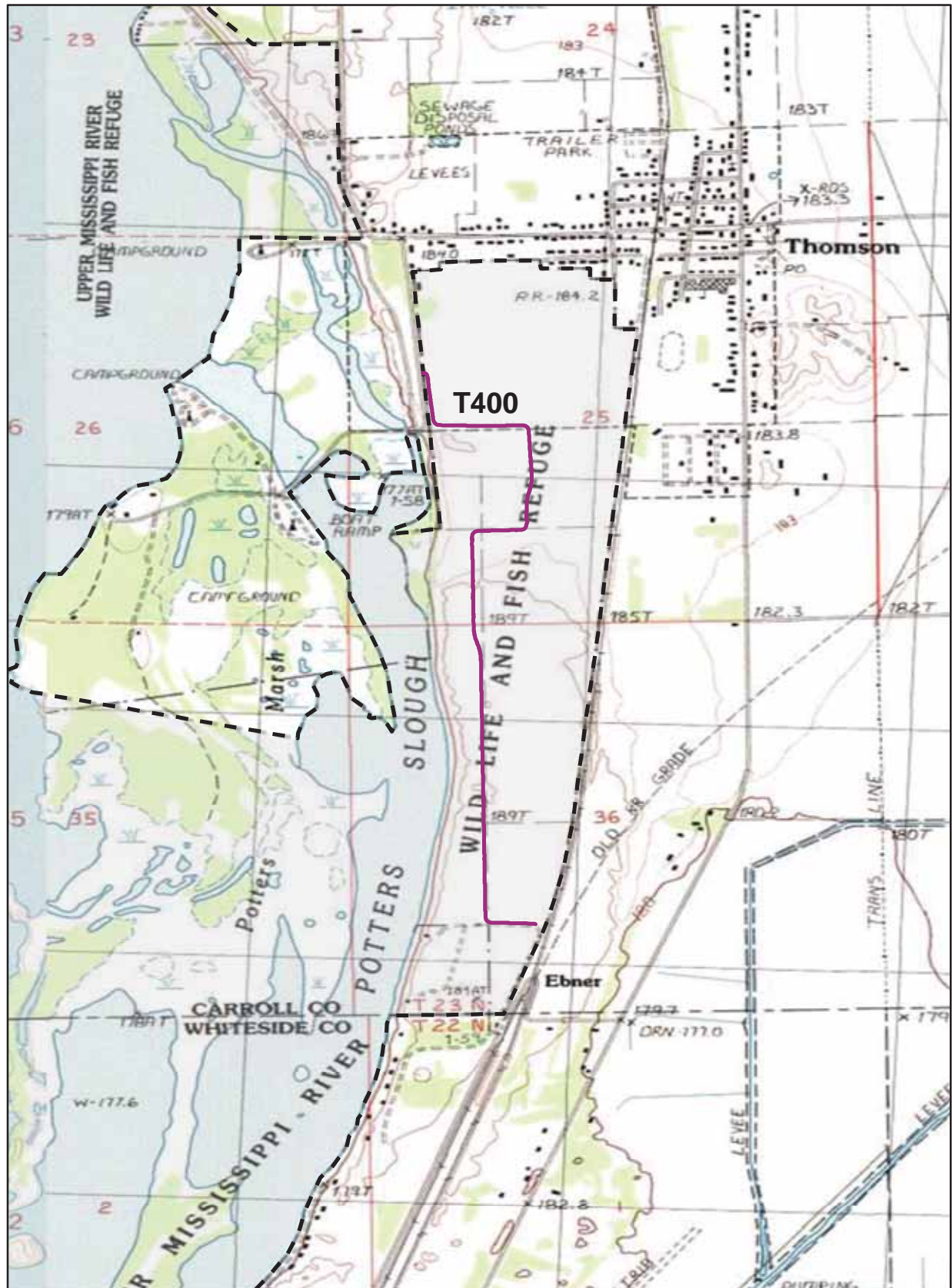
Trail Classificatio n	Mileage by Trail Condition												Total Miles
	Excellent		Good		Fair		Poor		Very Poor		Not Rated*		
	MILES	%	MILES	%	MILES	%	MILES	%	MILES	%	MILES	%	
TC1		0%		0%		0%		0%		0%		0%	0.00
TC2		0%		0%		0%		0%		0%		0%	0.00
TC3		0%		0%		0%		0%		0%		0%	0.00
TC4	1.78	100%		0%		0%		0%		0%		0%	1.78
TC5		0%		0%		0%		0%		0%		0%	0.00
Totals	1.78	100%	0.00	0%	0.00	0%	0.00	0%	0.00	0%	0.00	0%	1.78

* Admin Roads are included in the inventory but are not rated for condition.

Trail Features

Trail Number	Feature Type	Quantity	Grouped Feature	Milepost	Photo
T400	Gate	1	No	0.00	N/A
T400	Sign	6	No	0.00	0894
T400	Sign	3	No	0.01	0896
T400	Sign	1	No	0.02	0897
sf-square feet					
lf-linear feet					
cf-cubic feet					

UPPER MISSISSIPPI NATIONAL WILDLIFE AND FISH REFUGE - SAVANNA DISTRICT TRAIL LOCATION MAP



 Station Boundary

@ HQ/VC

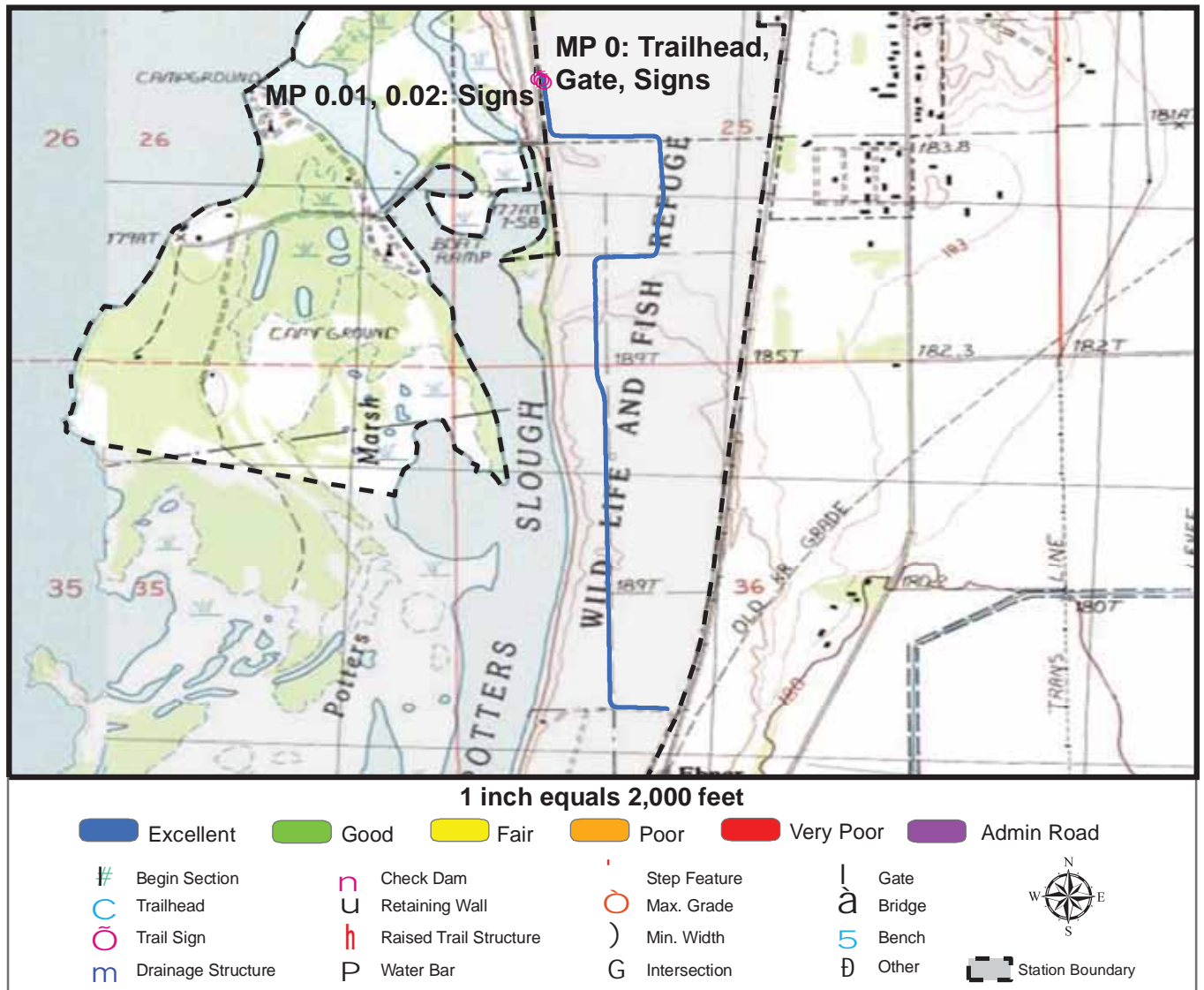
 Miles
0 0.4 0.8

TRAILS ID

Station Name: Upper Mississippi River NW&F Refuge - Savanna District Org. Code: 32576

Trail #	Trail Name	Surface Type	SAMMS	Trail Mileage	Trail Description (Begin and End point of trail)
T400	Great River Bike Trail	Gravel	10011844	1.78	From Trailhead at Lewis Ave. to end at NWR boundary

TRAIL CONDITION



Trail Name: Great River Bike Trail

Refuge Name: Upper Mississippi NW&FR - Savanna District

Trail Number: T400

Region: 3

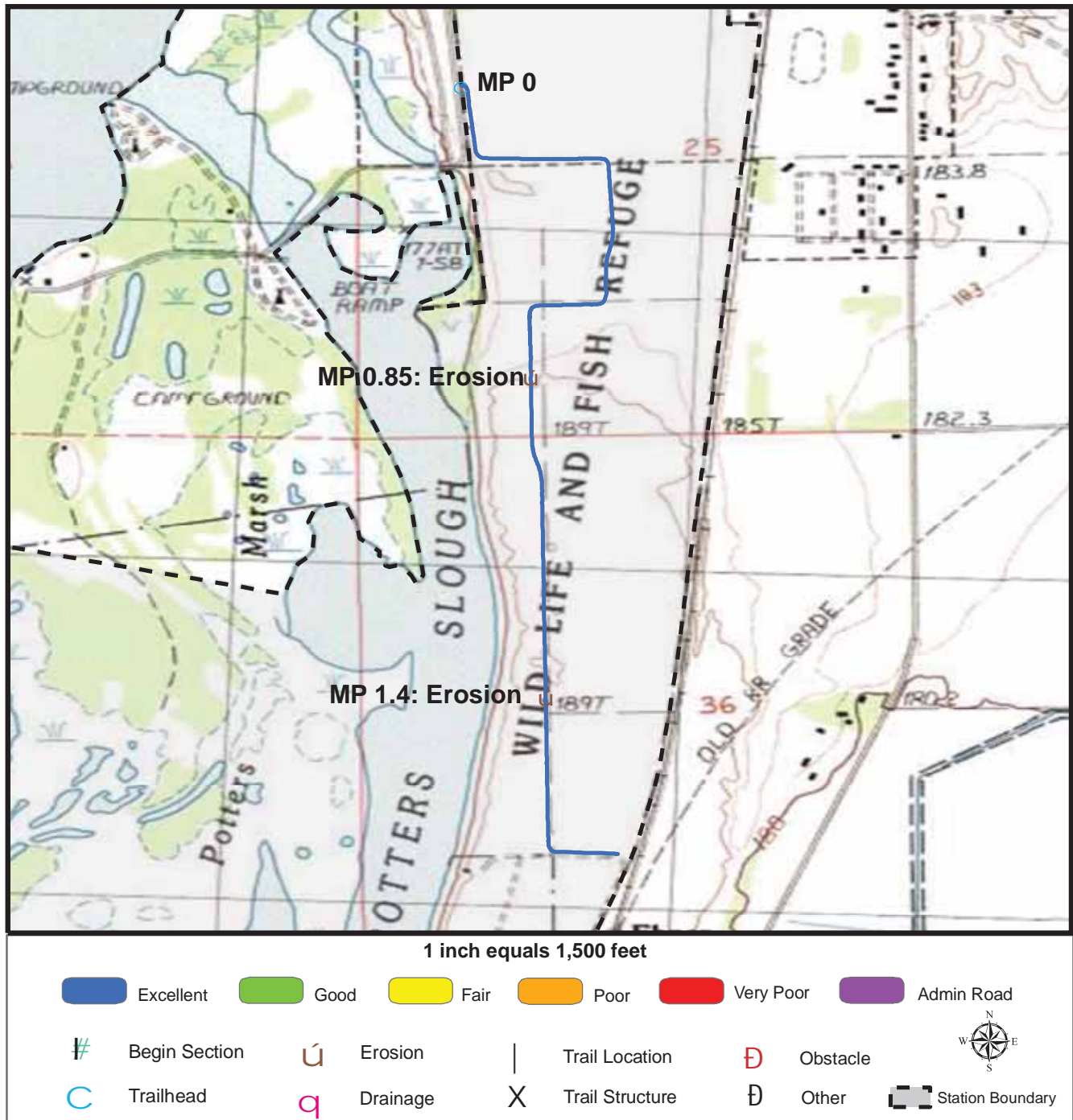
TOTAL LENGTH: 1.78 Miles

Section Number	001				
Section Length (miles)	1.78				
SAMMS Number	10011844				
Rating Date	9/15/2006				
Trail Section Information					
Trail Class	TC4				
Surface Type	Gravel				
Surface Firmness	Hard				
Width (inches)	96				
Average Grade (%)	2				
Average X-slope (%)	0.9				
Trail Condition Information					
Deferred Maintenance	\$4000				
CRV	\$407700				
FCI	0.01				
Condition	Excellent				

Trail Condition TOTALS

Deferred Maintenance	CRV	FCI	Condition
\$4000	\$407700	0.01	Excellent

TRAIL DEFICIENCY



Trail Name: Great River Bike Trail

Refuge Name: Upper Mississippi NW&FR - Savanna District

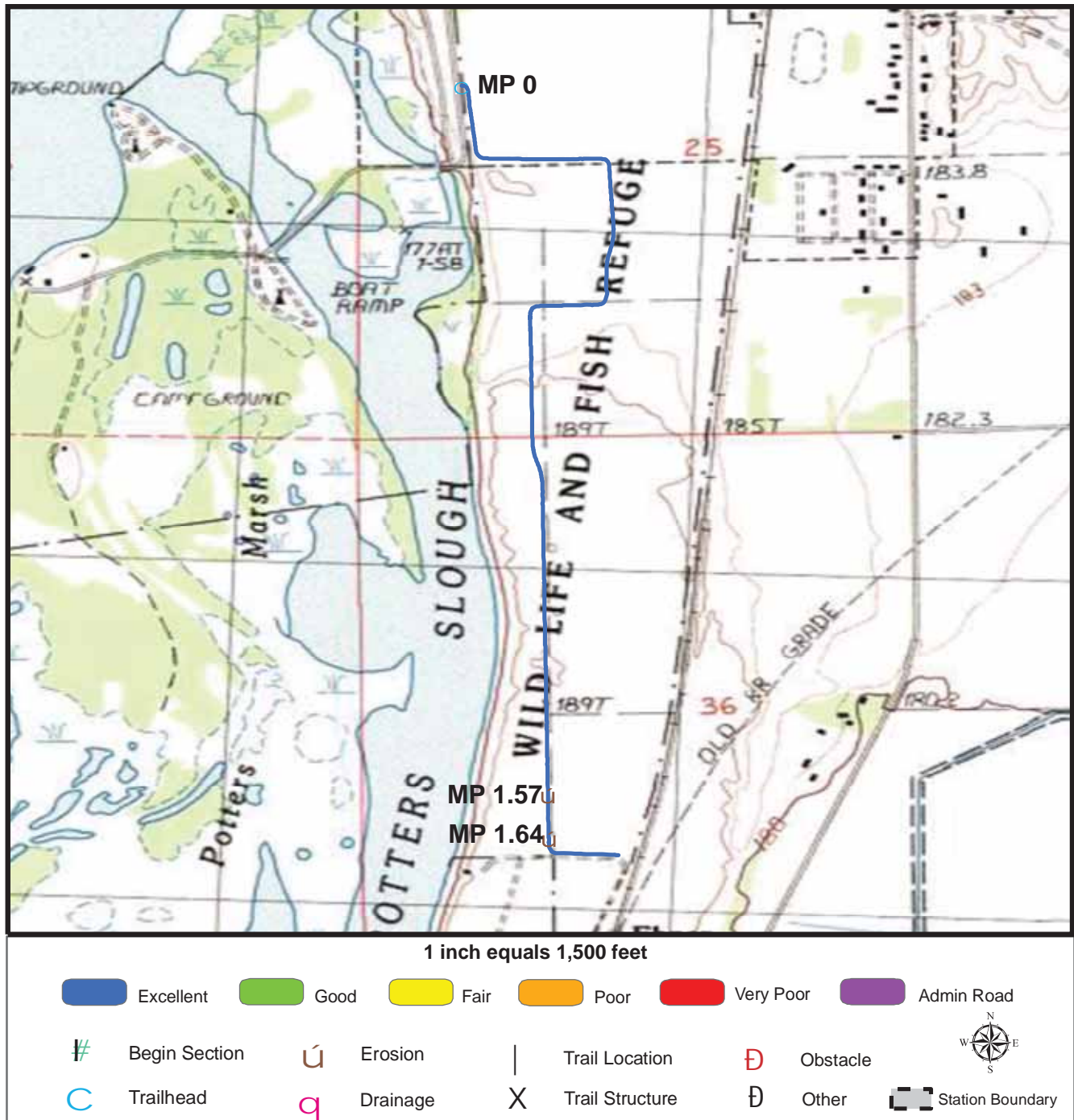
Trail Number: T400

Region: 3

TOTAL LENGTH: 1.78 Miles

Mile Post	0.85	0.85	1.4	1.4
Section Number	001	001	001	001
Photo Number	0899	0899	0902	0902
Deficiency	Erosion	Erosion	Erosion	Erosion
Action	Repair	Build/Add	Build/Add	Repair
Item	Tread -sf	Water Bar:Wood -each	Water Bar:Wood -each	Tread -sf
Quantity	500	4	3	200
Deferred Maintenance	\$1400	\$500	\$400	\$600

TRAIL DEFICIENCY



Trail Name: Great River Bike Trail

Refuge Name: Upper Mississippi NW&FR - Savanna District

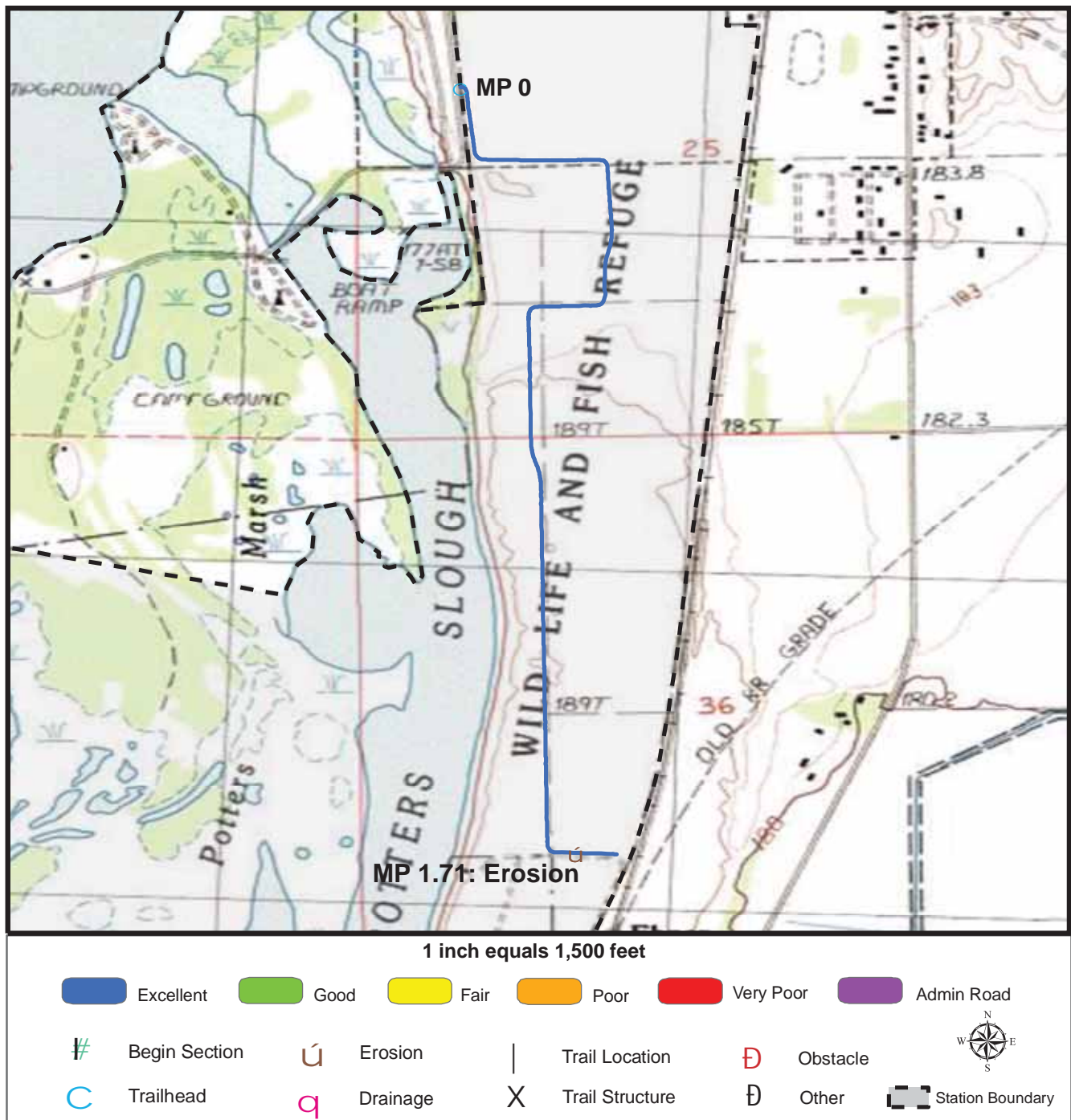
Trail Number: T400

Region: 3

TOTAL LENGTH: 1.78 Miles

Mile Post	1.57	1.57	1.64	1.64
Section Number	001	001	001	001
Photo Number	0903	0903	0904	0904
Deficiency	Erosion	Erosion	Erosion	Erosion
Action	Repair	Build/Add	Build/Add	Repair
Item	Tread -sf	Water Bar:Wood -each	Water Bar:Wood -each	Tread -sf
Quantity	30	1	2	100
Deferred Maintenance	\$100	\$200	\$300	\$300

TRAIL DEFICIENCY



Trail Name: Great River Bike Trail

Refuge Name: Upper Mississippi NW&FR - Savanna District

Trail Number: T400

Region: 3

TOTAL LENGTH: 1.78 Miles

Mile Post	1.71	1.71		
Section Number	001	001		
Photo Number	0905	0905		
Deficiency	Erosion	Erosion		
Action	Repair	Build/Add		
Item	Tread -sf	Drainage Dips -each		
Quantity	50	1		
Deferred Maintenance	\$200	\$100		

PHOTOGRAPHIC SHEET

TRAIL NUMBER: **T400**

STATION: Upper Mississippi NW&FR - Savanna District

DATE: 9/15/2006



Photo # 0895 - MP 0.0 - Trailhead

TRAIL NUMBER: **T400**

STATION: Upper Mississippi NW&FR - Savanna District

DATE: 9/15/2006



Photo # 0894 - MP 0.0 - Sign

PHOTOGRAPHIC SHEET

TRAIL NUMBER: **T400**

STATION: Upper Mississippi NW&FR - Savanna District

DATE: 9/15/2006

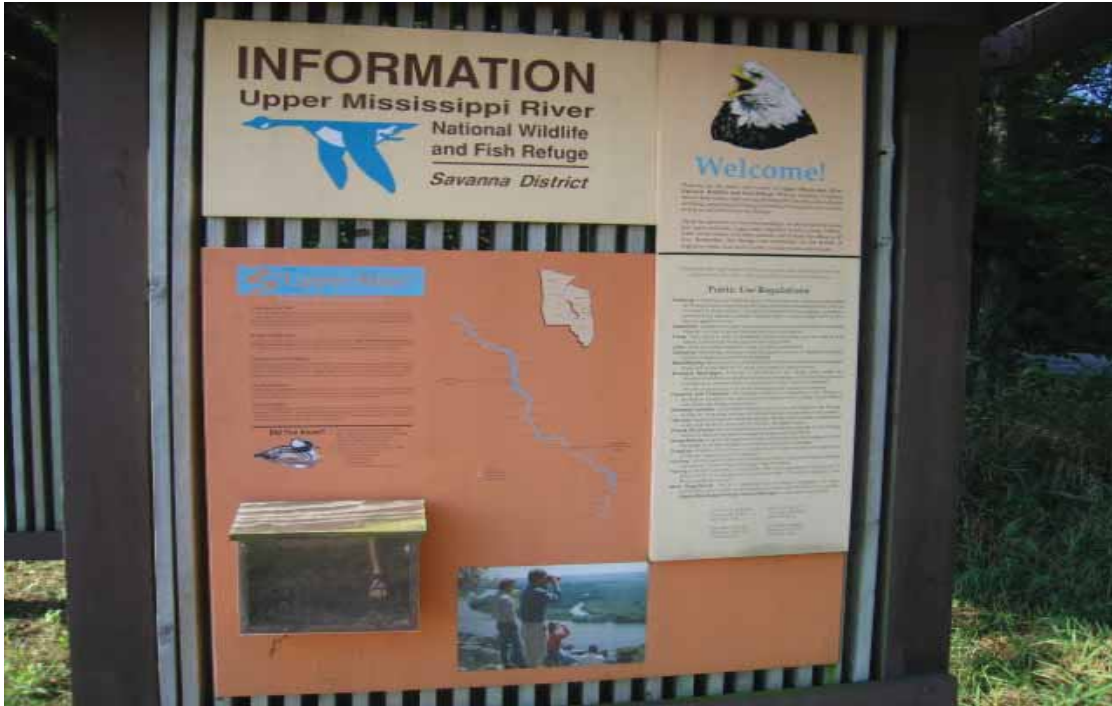


Photo # 0896 - MP 0.01 - Sign

TRAIL NUMBER: **T400**

STATION: Upper Mississippi NW&FR - Savanna District

DATE: 9/15/2006



Photo # 0897 - MP 0.02 - Sign

PHOTOGRAPHIC SHEET

TRAIL NUMBER: **T400**

STATION: Upper Mississippi NW&FR - Savanna District

DATE: 9/15/2006



Photo # 0899 - MP 0.85 - Erosion Deficiency

TRAIL NUMBER: **T400**

STATION: Upper Mississippi NW&FR - Savanna District

DATE: 9/15/2006



Photo # 0902 - MP 1.4 - Erosion Deficiency

PHOTOGRAPHIC SHEET

TRAIL NUMBER: **T400**

STATION: Upper Mississippi NW&FR - Savanna District

DATE: 9/15/2006



Photo # 0903 - MP 1.57 - Erosion Deficiency

TRAIL NUMBER: **T400**

STATION: Upper Mississippi NW&FR - Savanna District

DATE: 9/15/2006



Photo # 0904 - MP 1.64 - Erosion Deficiency

PHOTOGRAPHIC SHEET

TRAIL NUMBER: **T400**

STATION: Upper Mississippi NW&FR - Savanna District

DATE: 9/15/2006



Photo # 0905 - MP 1.71 - Erosion Deficiency

APPENDIX

Glossary of Terms and Abbreviations

Acc Info	Accessibility information available at trailhead.
Action	Action required to correct deficiency.
Admin Road	Administration Road. Admin Roads signed and advertised as trails are included in the trail inventory but a condition assessment is NOT done.
Alt SAMMS	Asset number of Alternate Facility Type.
Alt Type	Alternate Facility Type. Trail lies on a feature such as a levee, dam, administrative road or bridge, which has a separate SAMMS number.
AvgGrade	The average grade of the trail (%). The average of five measurements for trails less than two miles and ten measurements for trails equal to or greater than 2 miles.
AvgSlope	The average cross-slope of the trail (%). The average of five measurements for trails less than two miles and ten measurements for trails equal to or greater than 2 miles.
Check Dam	A small dam constructed across a drainage ditch, swale, or channel to lower the speed of concentrated flows.
Condition	Subjective rating of trail based on Facility Condition Index (FCI): FCI \leq .01 = Excellent FCI .011 - .05 = Good FCI .051 - .10 = Fair FCI .11 - .20 = Poor FCI $>$.20 = Very Poor
Crib Wall	Retaining wall.
Current Replacement Value (CRV)	The value of an asset determined by the estimated cost of replacing it.
Def type	Deficiency Type: Trail Structure, Drainage, Erosion, Obstacle, Trail Location, Other.

Deferred Maintenance (DM)	Maintenance that was not performed when scheduled.
Elem ID	Unique identifier for each trail section: Org Code-Trail Number-Section Number.
Facility Condition Index (FCI)	DM/CRV
Grouped Features	Grouped features include non-unique signs (mileposts, interpretive signs, species identification, etc.), water bars, check dams, steps, drain and drainage dips. For any given grouped feature, a GPS point and photo are taken for the first occurrence only and the total number of features in the group are entered into the “quantity” field of the data dictionary. CRV for grouped features are included in whatever trail section the GPS point was taken.
Info Type	Type of accessibility information available at trailhead: brochure, sign or other.
Item	Item on which the “Action” (see above) will be performed.
Manage_Use	Managed use of the trail: HIKE, BIKE, NSPC (non-specified), PACK, POR (portage), SNOWSHOE, XSKI (cross-country ski), OTHER.
Max Grade	Maximum grade (in percent) of trail. Only collected for Trail Classes 4 and 5 and when > 10%.
Min Width	Minimum Width (inches) of trail. Only collected for Trail Classes 4 and 5.
MP (Milepost)	Distance, in miles, of a trail feature or deficiency from the Trailhead.
Puncheon	Log footbridge used in area of poor drainage.
Raised Trail Structure	Boardwalk, Turnpike, Puncheon.
SAMMS No	Asset Number

Station Boundary	Approved Acquisition Boundary files downloaded from FWS website.
T Class	Trail Class: TC1-5 (see Trail Classification System for descriptions).
Tr Desig	Trail Designation: Standard (Std), National Historic Trail (NHT), National Recreation Trail (NRT), National Scenic Trail (NST).
Trail No	Trails are numbered based on Trail Class at the trailhead. TC 1 = T100 series, TC2 = T200 series, etc.
Turnpike	Trail tread elevated with dirt, rock or other aggregate from parallel side ditches and held in place by logs.



Trail Classification

Note: Trail Class descriptions define “typical” attributes, and exceptions may occur for any attribute.

Trail Attributes	Trail Class 1 Minimal/Undeveloped Trail	Trail Class 2 Simple/Minor Development Trail	Trail Class 3 Developed/Improved Trail	Trail Class 4 Highly Developed Trail	Trail Class 5 Fully Developed Trail
General Criteria					
Physical Characteristics to be Applied to All National Forest System Trails					
Tread & Traffic Flow	<ul style="list-style-type: none"> •Tread intermittent and often indistinct •May require route finding •Native materials only 	<ul style="list-style-type: none"> •Tread discernible and continuous, but narrow and rough •Few or no allowances constructed for passing •Native materials 	<ul style="list-style-type: none"> •Tread obvious and continuous •Width accommodates unhindered one-lane travel (occasional allowances constructed for passing) •Typically native materials 	<ul style="list-style-type: none"> •Tread wide and relatively smooth with few irregularities •Width may consistently accommodate two-lane travel •Native or imported materials •May be hardened 	<ul style="list-style-type: none"> •Width generally accommodates two-lane and two-directional travel, or provides frequent passing turnouts •Commonly hardened with asphalt or other imported material
Obstacles	<ul style="list-style-type: none"> •Obstacles common •Narrow passages; brush, steep grades, rocks and logs present 	<ul style="list-style-type: none"> •Obstacles occasionally present •Blockages cleared to define route and protect resources •Vegetation may encroach into trailway 	<ul style="list-style-type: none"> •Obstacles infrequent •Vegetation cleared outside of trailway 	<ul style="list-style-type: none"> •Few or no obstacles exist •Grades typically <12% •Vegetation cleared outside of trailway 	<ul style="list-style-type: none"> •No obstacles •Grades typically <8%
Constructed Features & Trail Elements	<ul style="list-style-type: none"> •Minimal to non-existent •Drainage is functional •No constructed bridges or foot crossings 	<ul style="list-style-type: none"> •Structures are of limited size, scale, and number •Drainage functional •Structures adequate to protect trail infrastructure and resources •Primitive foot crossings and fords 	<ul style="list-style-type: none"> •Trail structures (walls, steps, drainage, raised trail) may be common and substantial •Trail bridges as needed for resource protection and appropriate access •Generally native materials used in Wilderness 	<ul style="list-style-type: none"> •Structures frequent and substantial •Substantial trail bridges are appropriate at water crossings •Trailside amenities may be present 	<ul style="list-style-type: none"> •Structures frequent or continuous; may include curbs, handrails, trailside amenities, and boardwalks •Drainage structures frequent; may include culverts and road-like designs
Signs	<ul style="list-style-type: none"> •Minimum required •Generally limited to regulation and resource protection •No destination signs present 	<ul style="list-style-type: none"> •Minimum required for basic direction •Generally limited to regulation and resource protection •Typically very few or no destination signs present 	<ul style="list-style-type: none"> •Regulation, resource protection, user reassurance •Directional signs at junctions, or when confusion is likely •Destination signs typically present •Informational and interpretive signs may be present outside of Wilderness 	<ul style="list-style-type: none"> •Wide variety of signs likely present •Informational signs likely (outside of Wilderness) •Interpretive signs possible (outside of Wilderness) •Trail Universal Access information likely displayed at trailhead 	<ul style="list-style-type: none"> •Wide variety of signage is present •Information and interpretive signs likely •Trail Universal Access information is typically displayed at trailhead •
Typical Recreation Environments & Experience²	<ul style="list-style-type: none"> •Natural, unmodified •ROS: Often Primitive setting, but may occur in other ROS settings •WROS: Primitive 	<ul style="list-style-type: none"> •Natural, essentially unmodified •ROS: Typically Semi-Primitive setting •WROS: Primitive to Semi-Primitive 	<ul style="list-style-type: none"> •Natural, primarily unmodified •ROS: Typically Semi-Primitive to Roaded Natural setting •WROS: Semi-Primitive to Transition 	<ul style="list-style-type: none"> •May be modified •ROS: Typically Roaded Natural to Rural setting •WROS: Transition (rarely present in Wilderness) 	<ul style="list-style-type: none"> •Can be highly modified •ROS: Typically Rural to Urban setting •Commonly associated with Visitor Centers or high-use recreation sites •Not present in Wilderness