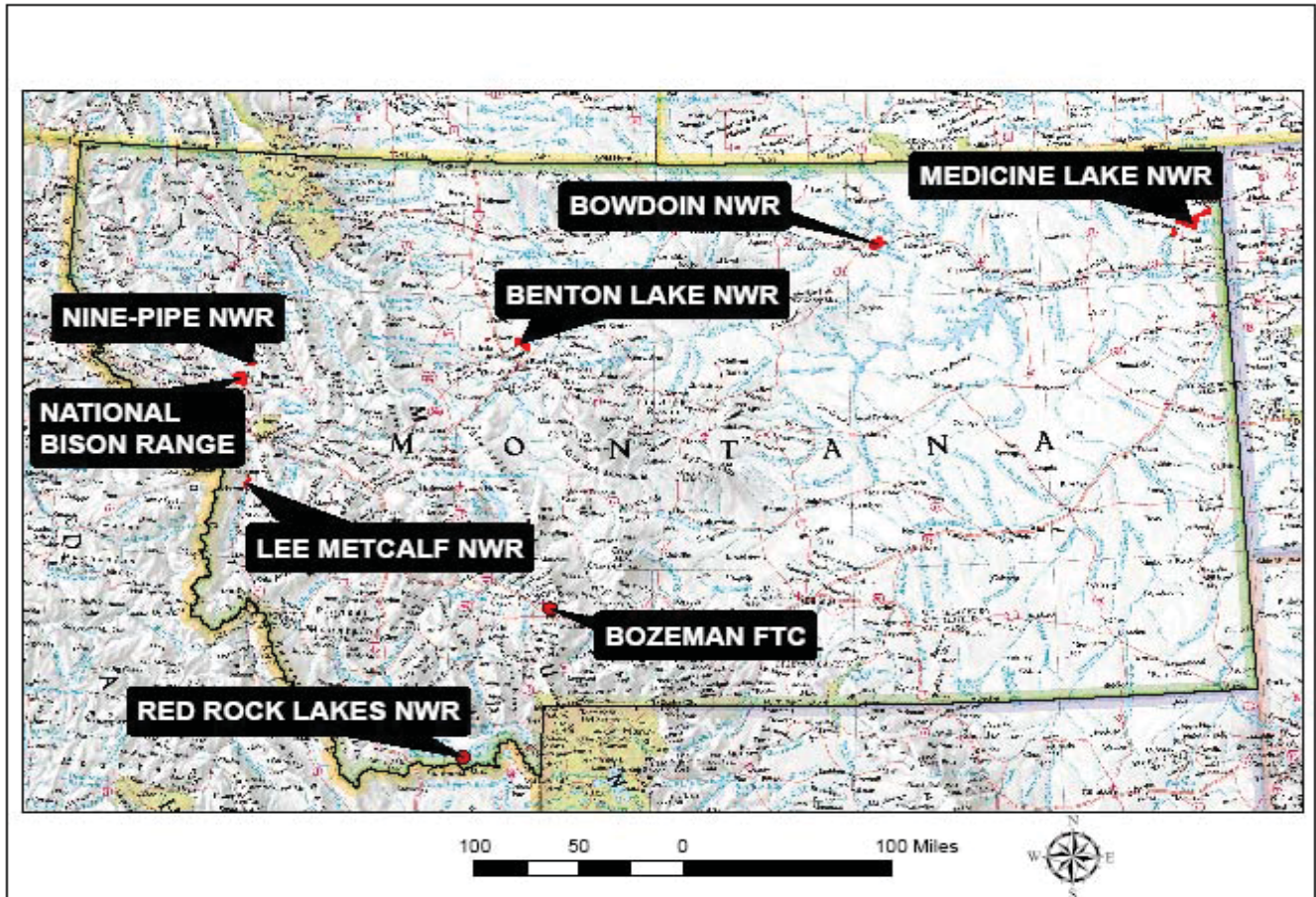


The Trail Inventory of U.S. Fish and Wildlife Service Stations in Montana



Prepared By:
Federal Highway Administration
Central Federal Lands Highway Division
July 2007



TABLE OF CONTENTS

<u>CHAPTER</u>		<u>PAGE</u>
1.	<u>MT STATE SUMMARY</u>	
	Table of Contents	1-1
	List of Refuges	1-2
	Mileage by Trail Class, Condition, and Surface	1-3
2-9.	<u>REFUGE SUMMARIES</u>	
	Mileage by Trail Class, Condition, and Surface	X-1
	Trail Location Map	X-2
	Trail Identification	X-3
	Condition and Deficiency Sheets	X-4
	Photographic Sheets	X-5
10.	<u>APPENDIX</u>	
	Glossary of Terms and Abbreviations	10-1
	Trail Classification System	10-4

FWS Stations in Montana with Trails

Station Name	Trail Miles	Chapter
Benton Lake NWR	0.19	2
Bowdoin NWR	0.40	3
Bozeman FTC	0.40	4
Lee Metcalf NWR	1.77	5
Medicine Lake NWR	0.58	6
National Bison Range	1.96	7
Ninepipe NWR	0.18	8
Red Rock Lakes NWR	3.04	9

Montana FWS Stations Trail Summaries

Trail Miles and Percentages by Surface Type and Condition

Trail Surface Type	Mileage by Trail Condition												Total Miles
	Excellent		Good		Fair		Poor		Very Poor		Not Rated*		
	MILES	%	MILES	%	MILES	%	MILES	%	MILES	%	MILES	%	
Native	3.29	39%		0%		0%		0%		0%		0%	3.29
Gravel	1.33	16%		0%		0%		0%		0%		0%	1.33
Asphalt	1.10	13%		0%		0%		0%		0%		0%	1.10
Concrete	0.05	1%		0%		0%		0%		0%		0%	0.05
Turnpike		0%		0%		0%		0%		0%		0%	0.00
Boardwalk	0.19	2%		0%		0%		0%		0%		0%	0.19
Puncheon		0%		0%		0%		0%		0%		0%	0.00
Woodchips		0%		0%		0%		0%		0%		0%	0.00
Mowed	0.58	7%		0%		0%		0%		0%		0%	0.58
Admin Road		0%		0%		0%		0%		0%	1.98	23%	1.98
Other		0%		0%		0%		0%		0%		0%	0.00
Totals	6.54	77%	0.00	0%	0.00	0%	0.00	0%	0.00	0%	1.98	23%	8.52

Trail Miles and Percentages by Trail Classification and Condition

Trail Classification	Mileage by Trail Condition												Total Miles
	Excellent		Good		Fair		Poor		Very Poor		Not Rated*		
	MILES	%	MILES	%	MILES	%	MILES	%	MILES	%	MILES	%	
TC1		0%		0%		0%		0%		0%		0%	0.00
TC2	0.58	7%		0%		0%		0%		0%		0%	0.58
TC3	4.12	48%		0%		0%		0%		0%		0%	4.12
TC4	0.50	6%		0%		0%		0%		0%		0%	0.50
TC5	1.34	16%		0%		0%		0%		0%	1.98	23%	3.32
Totals	6.54	77%	0.00	0%	0.00	0%	0.00	0%	0.00	0%	1.98	23%	8.52

* Admin Roads are included in the inventory but are not rated for condition.

The Trail Inventory of Benton Lake National Wildlife Refuge Great Falls, Montana



**Prepared By:
Federal Highway Administration
Central Federal Lands Highway Division
July 2007**



Benton Lake NWR

Trail and Trail Feature Summaries

Trail Miles and Percentages by Surface Type and Condition

Trail Surface Type	Mileage by Trail Condition												Total Miles
	Excellent		Good		Fair		Poor		Very Poor		Not Rated*		
	MILES	%	MILES	%	MILES	%	MILES	%	MILES	%	MILES	%	
Native		0%		0%		0%		0%		0%		0%	0.00
Gravel		0%		0%		0%		0%		0%		0%	0.00
Asphalt		0%		0%		0%		0%		0%		0%	0.00
Concrete		0%		0%		0%		0%		0%		0%	0.00
Turnpike		0%		0%		0%		0%		0%		0%	0.00
Boardwalk	0.19	100%		0%		0%		0%		0%		0%	0.19
Puncheon		0%		0%		0%		0%		0%		0%	0.00
Woodchips		0%		0%		0%		0%		0%		0%	0.00
Mowed		0%		0%		0%		0%		0%		0%	0.00
Admin Road		0%		0%		0%		0%		0%		0%	0.00
Other		0%		0%		0%		0%		0%		0%	0.00
Totals	0.19	100%	0.00	0%	0.00	0%	0.00	0%	0.00	0%	0.00	0%	0.19

Trail Miles and Percentages by Trail Classification and Condition

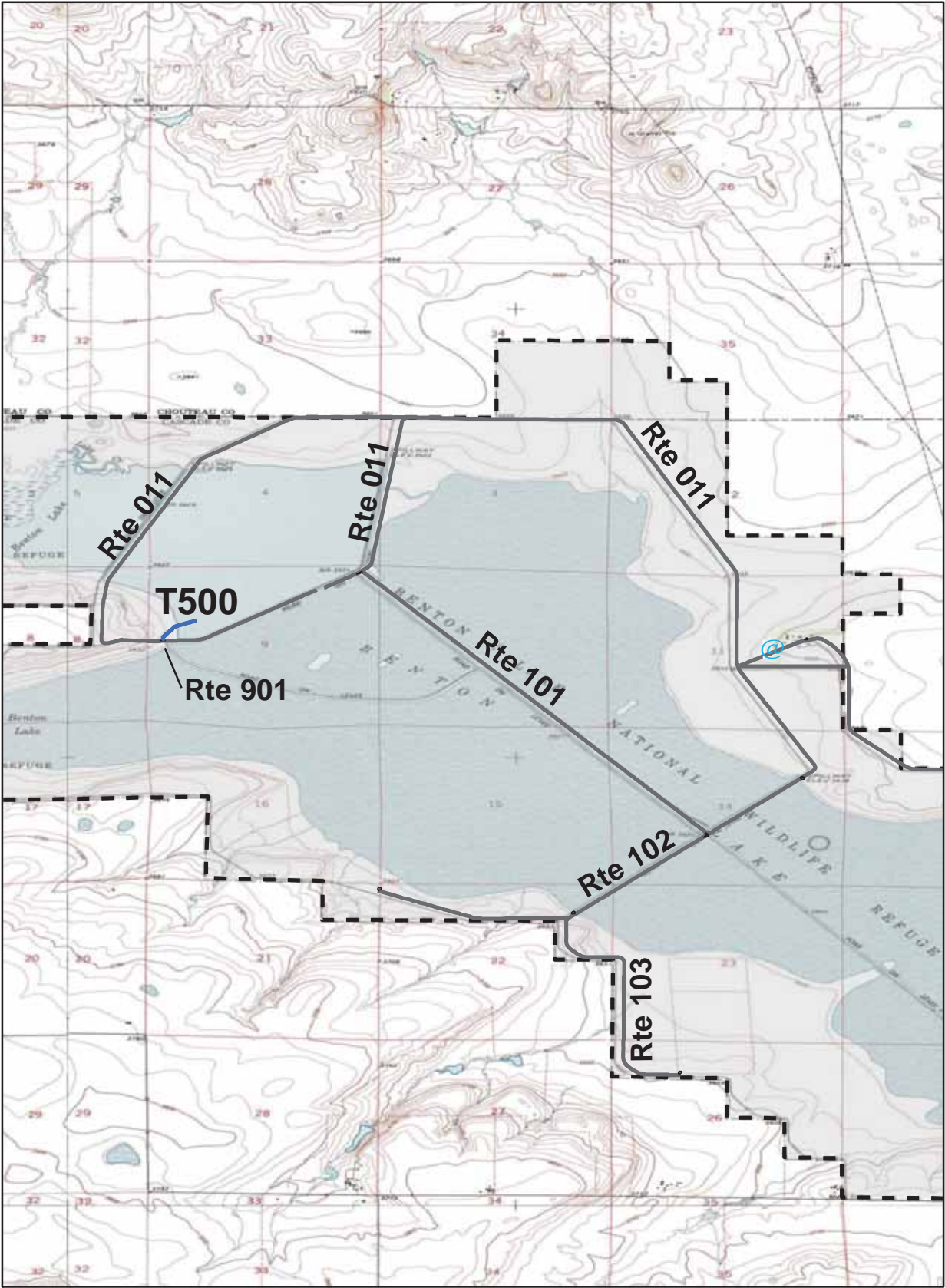
Trail Classification	Mileage by Trail Condition												Total Miles
	Excellent		Good		Fair		Poor		Very Poor		Not Rated*		
	MILES	%	MILES	%	MILES	%	MILES	%	MILES	%	MILES	%	
TC1		0%		0%		0%		0%		0%		0%	0.00
TC2		0%		0%		0%		0%		0%		0%	0.00
TC3		0%		0%		0%		0%		0%		0%	0.00
TC4		0%		0%		0%		0%		0%		0%	0.00
TC5	0.19	100%		0%		0%		0%		0%		0%	0.19
Totals	0.19	100%	0.00	0%	0.00	0%	0.00	0%	0.00	0%	0.00	0%	0.19

* Admin Roads are included in the inventory but are not rated for condition.

Trail Features

Trail Number	Feature Type	Quantity	Grouped Feature	Milepost	Photo
T500	Sign	2	No	0.00	12
T500	Bench	6	Yes	N/A	N/A
T500	Lookout/Ob Deck	1	No	0.07	N/A
T500	Lookout/Ob Deck	1	No	0.19	N/A
sf-square feet					
lf-linear feet					
cf-cubic feet					

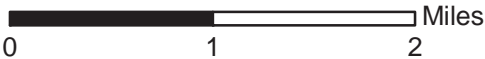
BENTON LAKE NATIONAL WILDLIFE REFUGE TRAIL LOCATION MAP



Station Boundary



HQ/VC



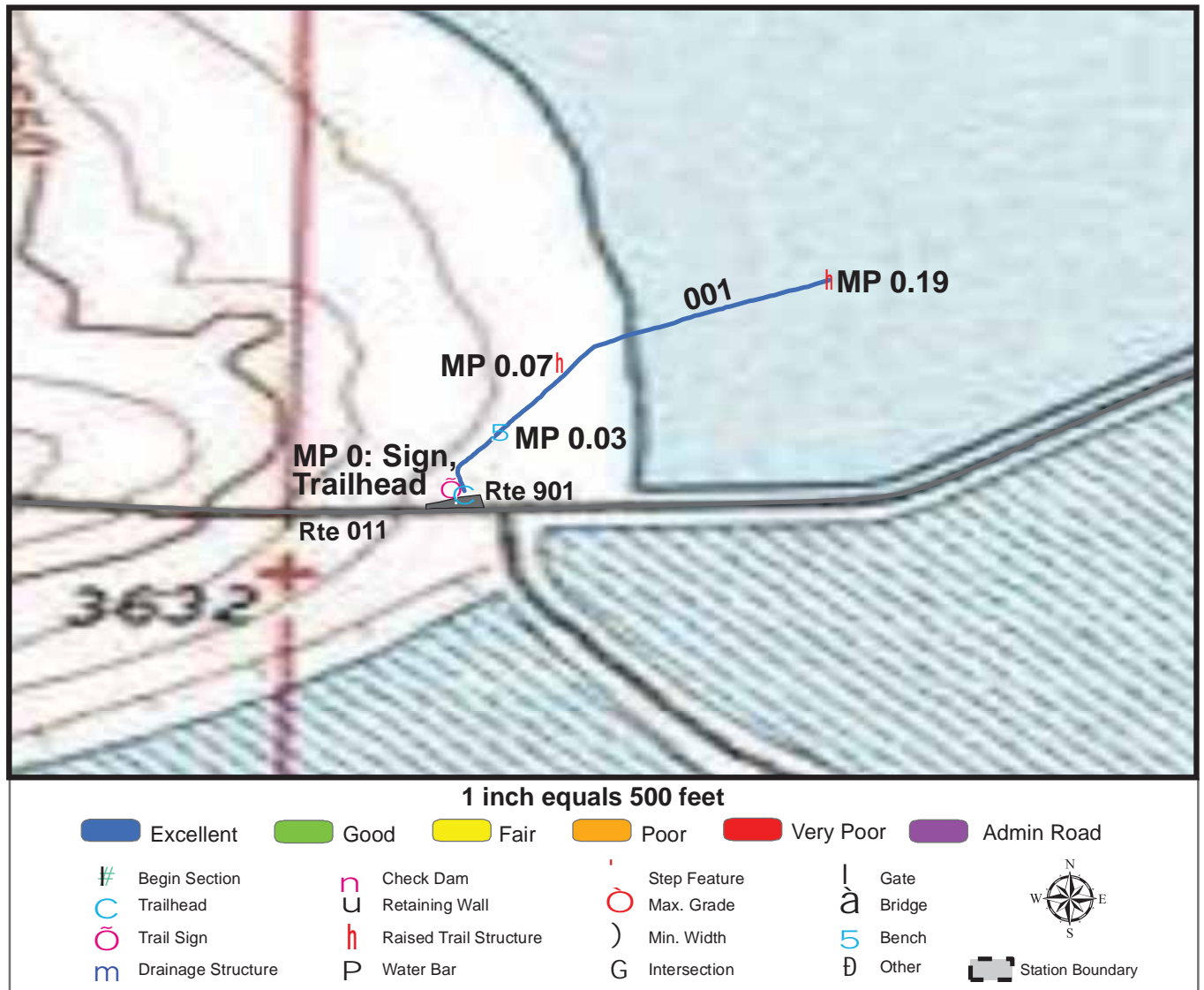
TRAILS ID

Station Name: Benton Lake NWR

Org. Code: 61510

Trail #	Trail Name	Surface Type(s)	SAMMS	Trail Mileage	Trail Description (Begin and End point of trail)
T500	Prairie Marsh Trail	Boardwalk	10024931	0.19	From Prairie Marsh Trail Parking (Rte 901) to lookout

TRAIL CONDITION



Trail Name: Prairie Marsh Trail

Refuge Name: Benton Lake

Trail Number: T500

Region: 6

TOTAL LENGTH: 0.19 Miles

Section Number	001				
Section Length (miles)	0.19				
SAMMS Number	10024931				
Rating Date	7/15/2007				
Trail Section Information					
Trail Class	TC5				
Surface Type	Boardwalk				
Surface Firmness	Hard				
Width (inches)	48				
Average Grade (%)	0.9				
Average X-slope (%)	2.1				
Trail Condition Information					
Deferred Maintenance	\$0				
CRV	\$113569				
FCI	0				
Condition	Excellent				

Trail Condition TOTALS

Deferred Maintenance	CRV	FCI	Condition
\$0	\$113569	0	Excellent

PHOTOGRAPHIC SHEET

TRAIL NUMBER: **T500**

STATION: Benton Lake NWR

DATE: 7/15/2007



Photo # 13 - MP 0.0 - Trailhead

TRAIL NUMBER: **T500**

STATION: Benton Lake NWR

DATE: 7/15/2007



Photo # 12 - MP 0.0 - Signs

The Trail Inventory of Bowdoin National Wildlife Refuge Malta, Montana



**Prepared By:
Federal Highway Administration
Central Federal Lands Highway Division
July 2007**



Bowdoin NWR

Trail and Trail Feature Summaries

Trail Miles and Percentages by Surface Type and Condition

Trail Surface Type	Mileage by Trail Condition												Total Miles
	Excellent		Good		Fair		Poor		Very Poor		Not Rated*		
	MILES	%	MILES	%	MILES	%	MILES	%	MILES	%	MILES	%	
Native		0%		0%		0%		0%		0%		0%	0.00
Gravel	0.40	100%		0%		0%		0%		0%		0%	0.40
Asphalt		0%		0%		0%		0%		0%		0%	0.00
Concrete		0%		0%		0%		0%		0%		0%	0.00
Turnpike		0%		0%		0%		0%		0%		0%	0.00
Boardwalk		0%		0%		0%		0%		0%		0%	0.00
Puncheon		0%		0%		0%		0%		0%		0%	0.00
Woodchips		0%		0%		0%		0%		0%		0%	0.00
Mowed		0%		0%		0%		0%		0%		0%	0.00
Admin Road		0%		0%		0%		0%		0%		0%	0.00
Other		0%		0%		0%		0%		0%		0%	0.00
Totals	0.40	100%	0.00	0%	0.00	0%	0.00	0%	0.00	0%	0.00	0%	0.40

Trail Miles and Percentages by Trail Classification and Condition

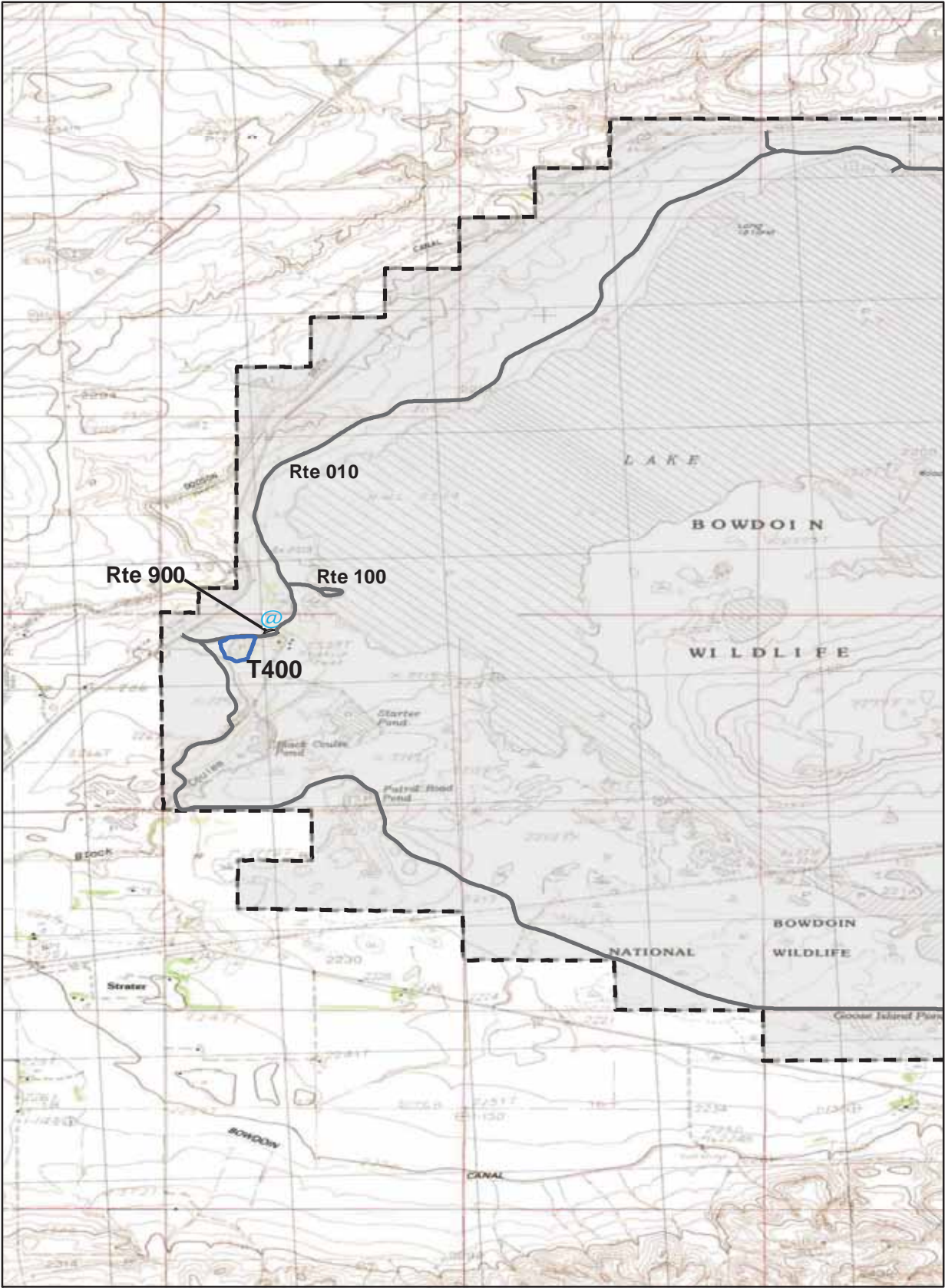
Trail Classification	Mileage by Trail Condition												Total Miles
	Excellent		Good		Fair		Poor		Very Poor		Not Rated*		
	MILES	%	MILES	%	MILES	%	MILES	%	MILES	%	MILES	%	
TC1		0%		0%		0%		0%		0%		0%	0.00
TC2		0%		0%		0%		0%		0%		0%	0.00
TC3		0%		0%		0%		0%		0%		0%	0.00
TC4	0.40	100%		0%		0%		0%		0%		0%	0.40
TC5		0%		0%		0%		0%		0%		0%	0.00
Totals	0.40	100%	0.00	0%	0.00	0%	0.00	0%	0.00	0%	0.00	0%	0.40

* Admin Roads are included in the inventory but are not rated for condition.

Trail Features

Trail Number	Feature Type	Quantity	Grouped Feature	Milepost	Photo
T400	Sign	1	No	0.00	2479
T400	Other	1	No	0.03	N/A
T400	Bridge -sf	80	No	0.15	2480
T400	Bench	2	No	0.17	N/A
T400	Bench	1	No	0.25	N/A
T400	Lookout/Ob Deck	1	No	0.37	N/A
T400	Sign	1	No	0.40	2478
sf-square feet lf-linear feet cf-cubic feet					

BOWDOIN NATIONAL WILDLIFE REFUGE TRAIL LOCATION MAP



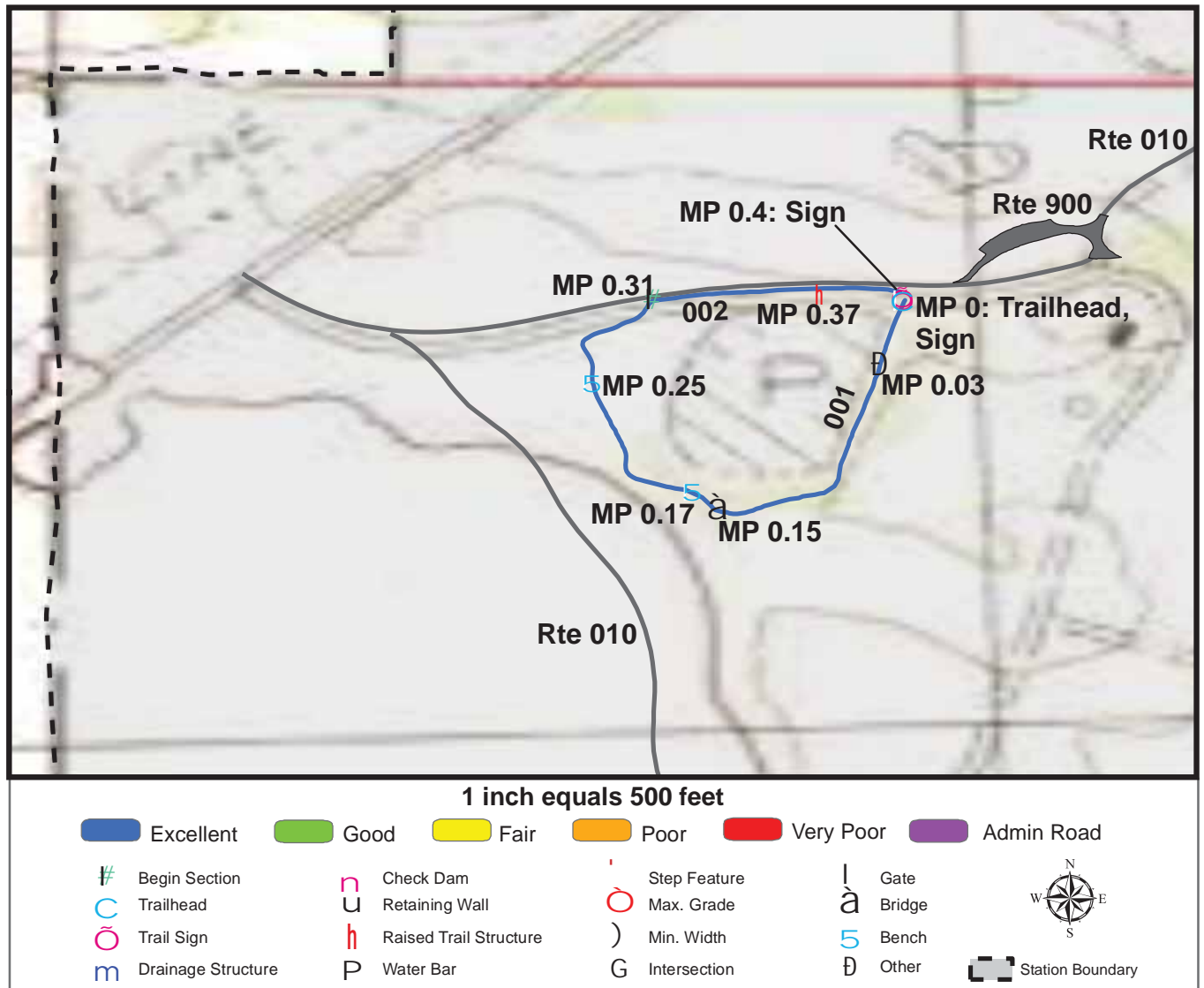
TRAILS ID

Station Name: Bowdoin NWR

Org. Code: 61580

Trail #	Trail Name	Surface Type	SAMMS	Trail Mileage	Trail Description (Begin and End point of trail)
T400	Display Pond Trail	Gravel	10039968	0.4	From uninventoried parking on Auto Tour Route (Rte 010) to end of loop at uninventoried parking

TRAIL CONDITION



Trail Name: Display Pond Trail

Refuge Name: Bowdoin NWR

Trail Number: T400

Region: 6

TOTAL LENGTH: 0.4 Miles

Section Number	001	002			
Section Length (miles)	0.31	0.09			
SAMMS Number	10039968	10039968			
Rating Date	7/17/2007	7/17/2007			
Trail Section Information					
Trail Class	TC4	TC4			
Surface Type	Gravel	Gravel			
Surface Firmness	Hard	Hard			
Width (inches)	96	60			
Average Grade (%)	2.7	2.7			
Average X-slope (%)	2.5	2.5			
Trail Condition Information					
Deferred Maintenance	\$0	\$0			
CRV	\$69275	\$12157			
FCI	0	0			
Condition	Excellent	Excellent			

Trail Condition TOTALS

Deferred Maintenance	CRV	FCI	Condition
\$0	\$81432	0	Excellent

PHOTOGRAPHIC SHEET

TRAIL NUMBER: **T400**
STATION: Bowdoin NWR
DATE: 7/17/2007



Photo # 2479 - MP 0.0 - Trailhead, Sign

TRAIL NUMBER: **T400**
STATION: Bowdoin NWR
DATE: 7/17/2007



Photo # 2480 - MP 0.15 - Bridge

PHOTOGRAPHIC SHEET

TRAIL NUMBER: **T400**

STATION: Bowdoin NWR

DATE: 7/17/2007



Photo # 2481 - MP 0.31 - Begin Section 002

TRAIL NUMBER: **T400**

STATION: Bowdoin NWR

DATE: 7/17/2007



Photo # 2478 - MP 0.4 - Sign

The Trail Inventory of Bozeman Fish Technology Center Bozeman, Montana



**Prepared By:
Federal Highway Administration
Central Federal Lands Highway Division
July 2007**



Bozeman Fish Technology Center

Trail and Trail Feature Summaries

Trail Miles and Percentages by Surface Type and Condition

Trail Surface Type	Mileage by Trail Condition												Total Miles
	Excellent		Good		Fair		Poor		Very Poor		Not Rated*		
	MILES	%	MILES	%	MILES	%	MILES	%	MILES	%	MILES	%	
Native		0%		0%		0%		0%		0%		0%	0.00
Gravel	0.40	100%		0%		0%		0%		0%		0%	0.40
Asphalt		0%		0%		0%		0%		0%		0%	0.00
Concrete		0%		0%		0%		0%		0%		0%	0.00
Turnpike		0%		0%		0%		0%		0%		0%	0.00
Boardwalk		0%		0%		0%		0%		0%		0%	0.00
Puncheon		0%		0%		0%		0%		0%		0%	0.00
Woodchips		0%		0%		0%		0%		0%		0%	0.00
Mowed		0%		0%		0%		0%		0%		0%	0.00
Admin Road		0%		0%		0%		0%		0%		0%	0.00
Other		0%		0%		0%		0%		0%		0%	0.00
Totals	0.40	100%	0.00	0%	0.00	0%	0.00	0%	0.00	0%	0.00	0%	0.40

Trail Miles and Percentages by Trail Classification and Condition

Trail Classification	Mileage by Trail Condition												Total Miles
	Excellent		Good		Fair		Poor		Very Poor		Not Rated*		
	MILES	%	MILES	%	MILES	%	MILES	%	MILES	%	MILES	%	
TC1		0%		0%		0%		0%		0%		0%	0.00
TC2		0%		0%		0%		0%		0%		0%	0.00
TC3	0.30	75%		0%		0%		0%		0%		0%	0.30
TC4	0.10	25%		0%		0%		0%		0%		0%	0.10
TC5		0%		0%		0%		0%		0%		0%	0.00
Totals	0.40	100%	0.00	0%	0.00	0%	0.00	0%	0.00	0%	0.00	0%	0.40

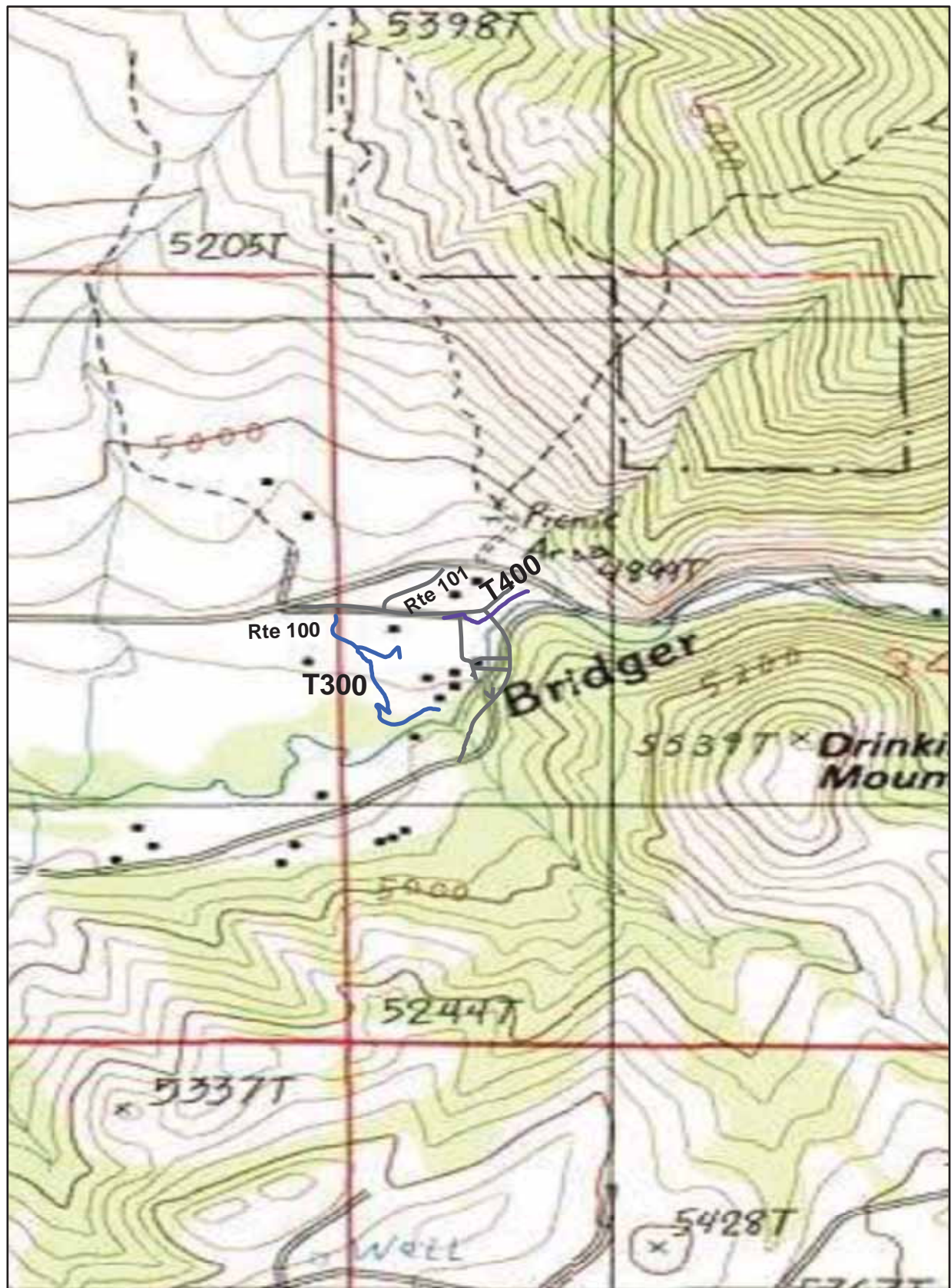
* Admin Roads are included in the inventory but are not rated for condition.

Trail Features

Trail Number	Feature Type	Quantity	Grouped Feature	Milepost	Photo
T300	Trailhead	1	No	0.00	3
T300	Culvert -lf	15	No	0.00	N/A
T300	Begin Section	1	No	0.05	5
T300	Bridge -sf	48	No	0.17	4
T300	Culvert -lf	15	No	0.19	N/A
T400	Trailhead	1	No	0.00	1
T400	Max Grade- %	12	No	0.03	N/A
T400	Bridge -sf	36	No	0.06	2

sf-square feet lf-linear feet cf-cubic feet
--

BOZEMAN FISH TECHNOLOGY CENTER



Station Boundary



HQ/VC

0 0.25 0.5 Miles

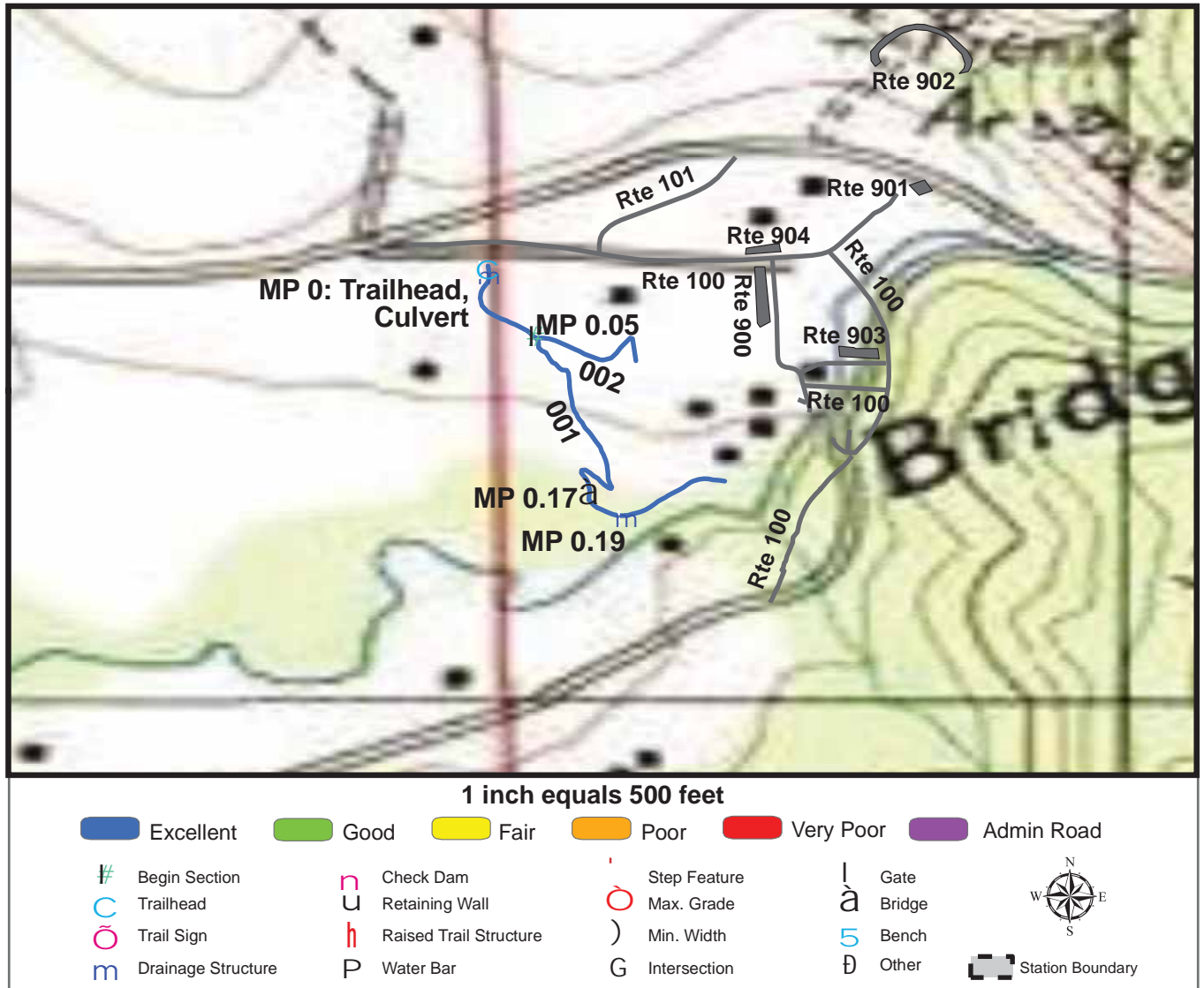
TRAILS ID

Station Name: Bozeman Fish Technology Center

Org. Code: 61210

Trail #	Trail Name	Surface Type(s)	SAMMS	Trail Mileage	Trail Description (Begin and End point of trail)
T300	Nature Trail	Gravel	N/A	0.3	From Hatchery Road (Rte 100) to end of gravel at utility shed
T400	Hatchery River Trail	Gravel	10024619	0.1	From Hatchery Road (Rte 100) to headquarters

TRAIL CONDITION



Trail Name: Nature Trail

Refuge Name: Bozeman Fish Technology Center

Trail Number: T300

Region: 6

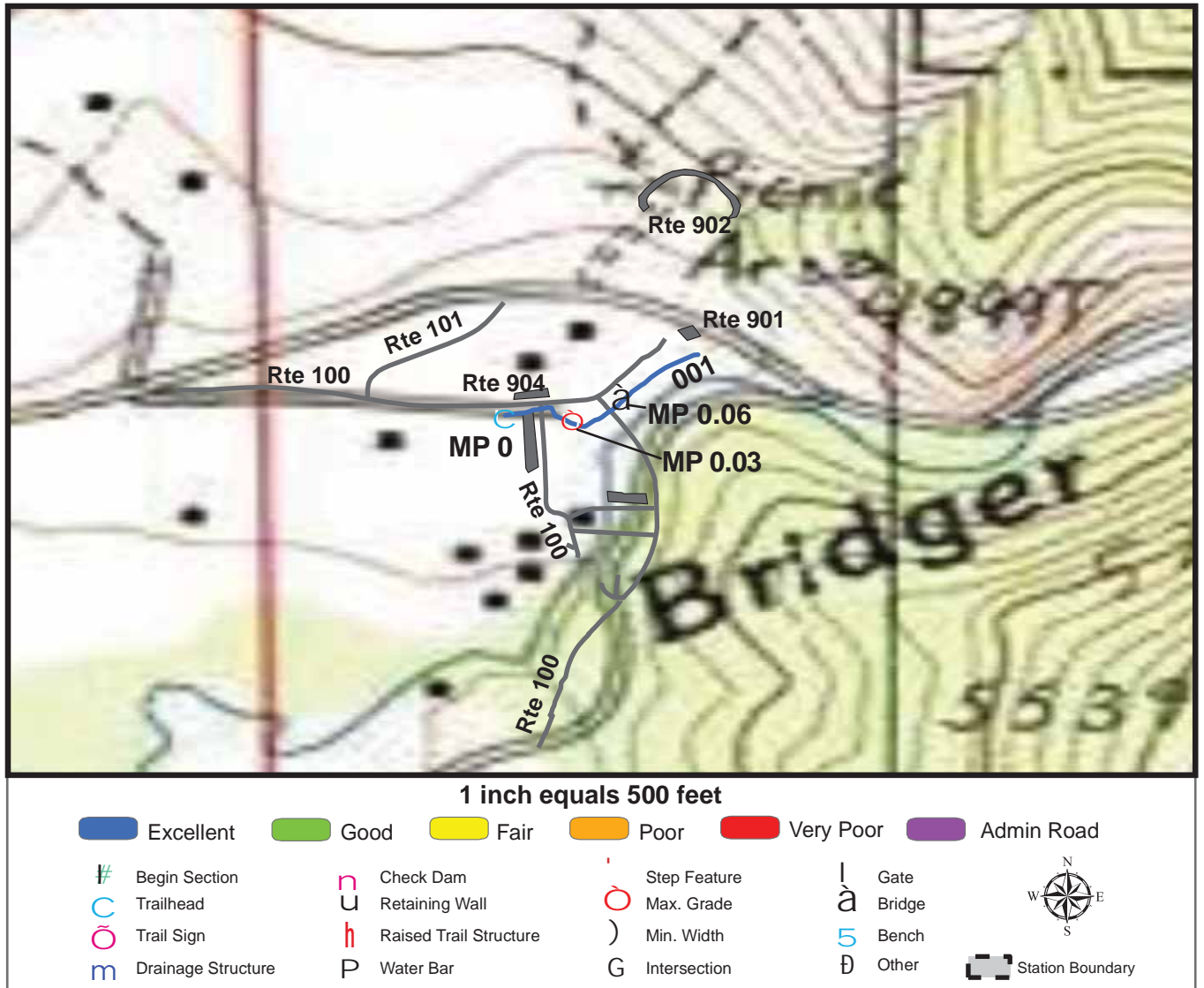
TOTAL LENGTH: 0.3 Miles

Section Number	001	002			
Section Length (miles)	0.24	0.06			
SAMMS Number	N/A	N/A			
Rating Date	7/15/2007	7/15/2007			
Trail Section Information					
Trail Class	TC3	TC3			
Surface Type	Gravel	Gravel			
Surface Firmness	Hard	Hard			
Width (inches)	60	60			
Average Grade (%)	7.8	7.8			
Average X-slope (%)	5.3	5.3			
Trail Condition Information					
Deferred Maintenance	\$0	\$0			
CRV	\$34606	\$7221			
FCI	0	0			
Condition	Excellent	Excellent			

Trail Condition TOTALS

Deferred Maintenance	CRV	FCI	Condition
\$0	\$41827	0	Excellent

TRAIL CONDITION



Trail Name: Hatchery River Trail

Refuge Name: Bozeman Fish Technology Center

Trail Number: T400

Region: 6

TOTAL LENGTH: 0.1 Miles

Section Number	001				
Section Length (miles)	0.1				
SAMMS Number	10024619				
Rating Date	7/15/2007				
Trail Section Information					
Trail Class	TC4				
Surface Type	Gravel				
Surface Firmness	Firm				
Width (inches)	60				
Average Grade (%)	3.4				
Average X-slope (%)	2.1				
Trail Condition Information					
Deferred Maintenance	\$0				
CRV	\$13745				
FCI	0				
Condition	Excellent				

Trail Condition TOTALS

Deferred Maintenance	CRV	FCI	Condition
\$0	\$13745	0	Excellent

PHOTOGRAPHIC SHEET

TRAIL NUMBER: **T300**

STATION: Bozeman Fish Technology Center

DATE: 7/15/2007



Photo # 3 - MP 0.0 - Trailhead

TRAIL NUMBER: **T300**

STATION: Bozeman Fish Technology Center

DATE: 7/15/2007



Photo # 5 - MP 0.05 - Begin Section 002

PHOTOGRAPHIC SHEET

TRAIL NUMBER: **T300**

STATION: Bozeman Fish Technology Center

DATE: 7/15/2007



Photo # 4 - MP 0.17 - Bridge

TRAIL NUMBER: **T400**

STATION: Bozeman Fish Technology Center

DATE: 7/15/2007



Photo # 1 - MP 0.0 - Trailhead

PHOTOGRAPHIC SHEET

TRAIL NUMBER: T400

STATION: Bozeman Fish Technology Center

DATE: 7/15/2007



Photo # 2 - MP 0.06 - Bridge

The Trail Inventory of Lee Metcalf National Wildlife Refuge Stevensville, Montana



Prepared By:
Federal Highway Administration
Central Federal Lands Highway Division
July 2007



Lee Metcalf NWR

Trail and Trail Feature Summaries

Trail Miles and Percentages by Surface Type and Condition

Trail Surface Type	Mileage by Trail Condition												Total Miles
	Excellent		Good		Fair		Poor		Very Poor		Not Rated*		
	MILES	%	MILES	%	MILES	%	MILES	%	MILES	%	MILES	%	
Native	1.21	68%		0%		0%		0%		0%		0%	1.21
Gravel		0%		0%		0%		0%		0%		0%	0.00
Asphalt	0.56	32%		0%		0%		0%		0%		0%	0.56
Concrete		0%		0%		0%		0%		0%		0%	0.00
Turnpike		0%		0%		0%		0%		0%		0%	0.00
Boardwalk		0%		0%		0%		0%		0%		0%	0.00
Puncheon		0%		0%		0%		0%		0%		0%	0.00
Woodchips		0%		0%		0%		0%		0%		0%	0.00
Mowed		0%		0%		0%		0%		0%		0%	0.00
Admin Road		0%		0%		0%		0%		0%		0%	0.00
Other		0%		0%		0%		0%		0%		0%	0.00
Totals	1.77	100%	0.00	0%	0.00	0%	0.00	0%	0.00	0%	0.00	0%	1.77

Trail Miles and Percentages by Trail Classification and Condition

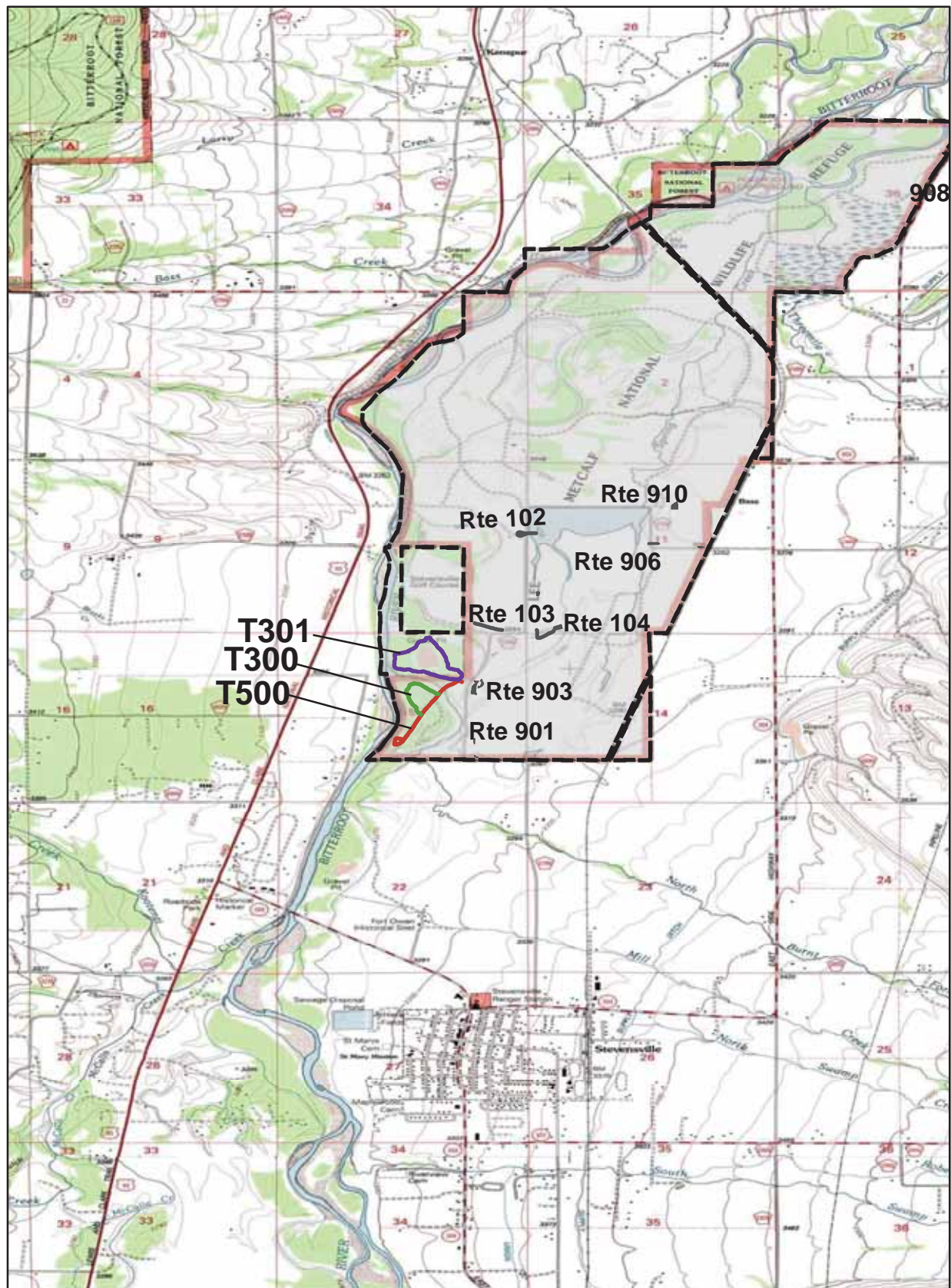
Trail Classification	Mileage by Trail Condition												Total Miles
	Excellent		Good		Fair		Poor		Very Poor		Not Rated*		
	MILES	%	MILES	%	MILES	%	MILES	%	MILES	%	MILES	%	
TC1		0%		0%		0%		0%		0%		0%	0.00
TC2		0%		0%		0%		0%		0%		0%	0.00
TC3	1.21	68%		0%		0%		0%		0%		0%	1.21
TC4		0%		0%		0%		0%		0%		0%	0.00
TC5	0.56	32%		0%		0%		0%		0%		0%	0.56
Totals	1.77	100%	0.00	0%	0.00	0%	0.00	0%	0.00	0%	0.00	0%	1.77

* Admin Roads are included in the inventory but are not rated for condition.

Trail Features

Trail Number	Feature Type	Quantity	Grouped Feature	Milepost	Photo
T300	Bench	1	No	0.20	N/A
T301	Bench	1	No	0.32	N/A
T500	Gate	1	No	0.00	N/A
T500	Sign	3	No	0.02	2
T500	Lookout/Ob Deck	1	No	0.11	N/A
T500	Water Control Struc	2	No	0.11	N/A
T500	Water Control Struc	1	No	0.20	N/A
T500	Culvert -lf	40	No	0.21	N/A
T500	Bench	3	Yes	N/A	N/A
T500	Culvert -lf	15	No	0.32	N/A
T500	Culvert -lf	15	No	0.41	N/A
sf-square feet lf-linear feet cf-cubic feet					

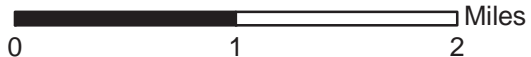
LEE METCALF NWR TRAIL LOCATION MAP



Station Boundary



HQ/VC



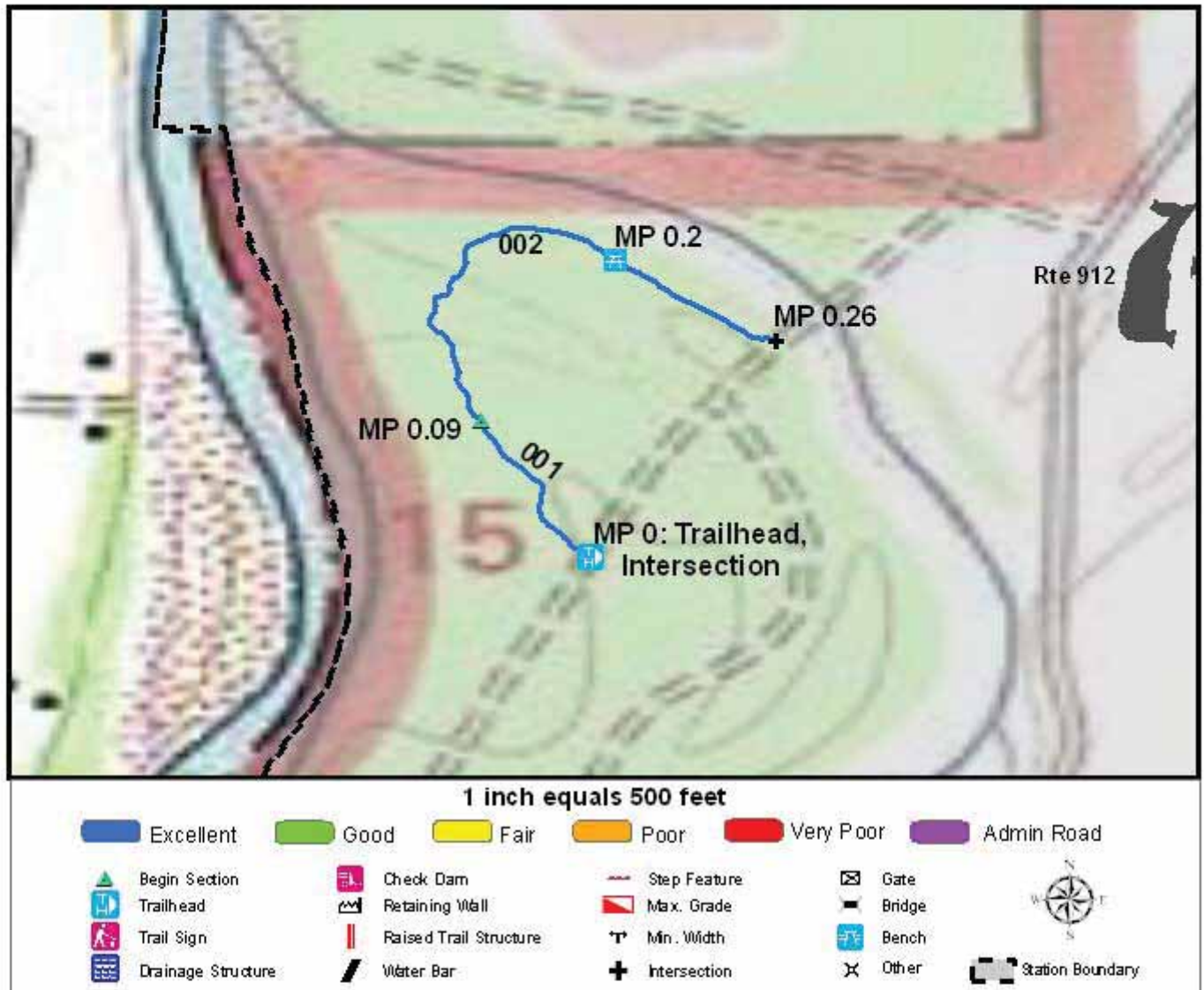
TRAILS ID

Station Name: Lee Metcalf NWR

Org. Code: 61560

Trail #	Trail Name	Surface Type(s)	SAMMS	Trail Mileage	Trail Description (Begin and End point of trail)
T300	Old Hollow Trail	Native	10026675	0.35	From Riparian Way Trail (T500) back to Riparian Way Trail (T500)
T301	Ponderosa Trail	Native	10026675	0.86	From Riparian Way Trail (T500) at sign to end of trail loop
T500	Riparian Way Trail	Asphalt	10053964	0.56	From Nature Trails Parking (Rte 912) to end of trail loop

TRAIL CONDITION



Trail Name: Old Hollow Trail

Refuge Name: Lee Metcalf NWR

Trail Number: T300

Region: 6

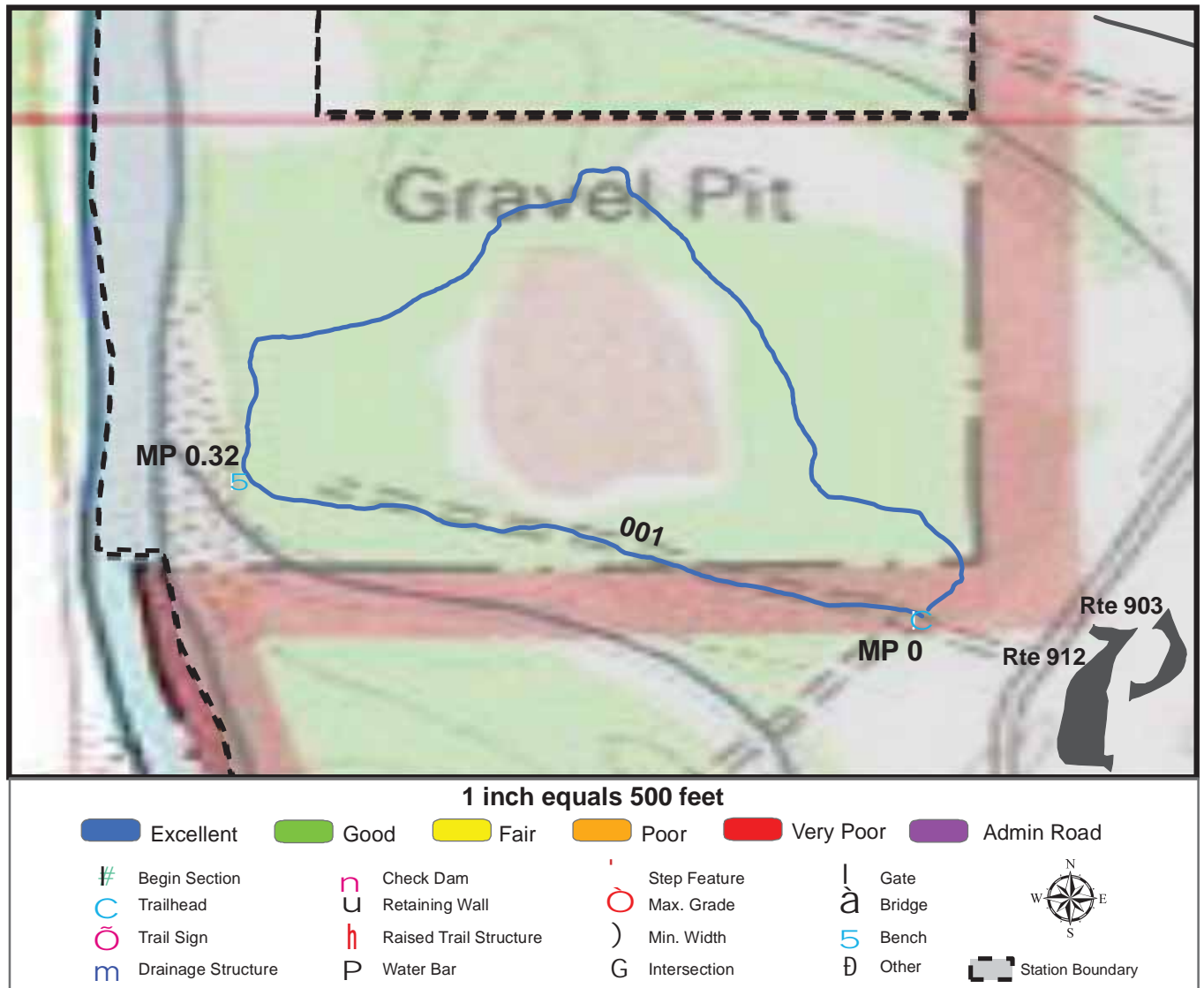
TOTAL LENGTH: 0.35 Miles

Section Number	001	002		
Section Length (miles)	0.09	0.26		
SAMMS Number	10026675	10026675		
Rating Date	7/14/2007	7/14/2007		
Trail Section Information				
Trail Class	TC3	TC3		
Surface Type	Native	Native		
Surface Firmness	Hard	Hard		
Width (inches)	36	36		
Average Grade (%)	1.6	1.6		
Average X-slope (%)	2.8	2.8		
Trail Condition Information				
Deferred Maintenance	\$0	\$0		
CRV	\$6095	\$16996		
FCI	0	0		
Condition	Excellent	Excellent		

Trail Condition TOTALS

Deferred Maintenance	CRV	FCI	Condition
\$0	\$23091	0	Excellent

TRAIL CONDITION



Trail Name: Ponderosa Trail

Refuge Name: Lee Metcalf NWR

Trail Number: T301

Region: 6

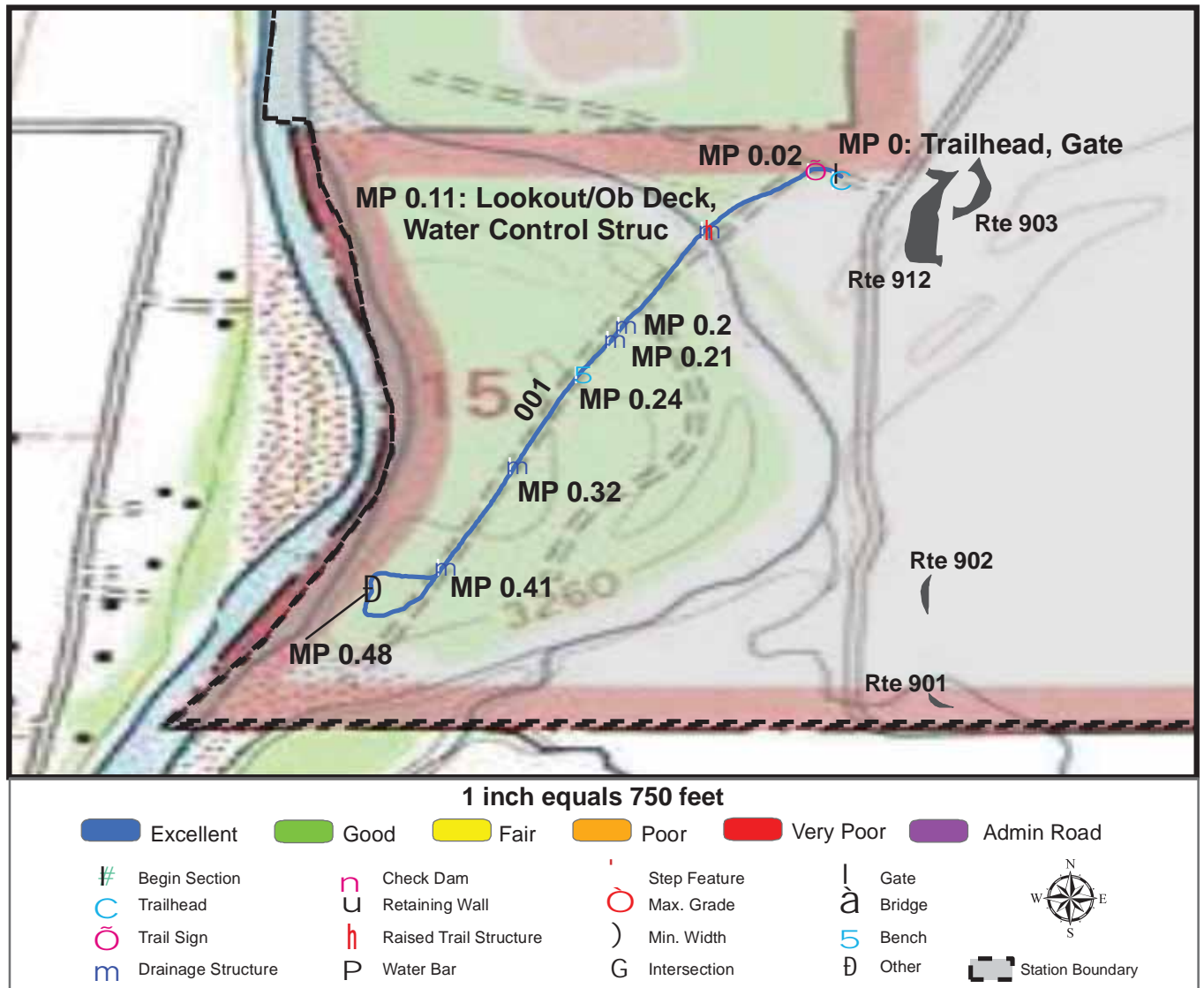
TOTAL LENGTH: 0.86 Miles

Section Number	001				
Section Length (miles)	0.86				
SAMMS Number	10026675				
Rating Date	7/14/2007				
Trail Section Information					
Trail Class	TC3				
Surface Type	Native				
Surface Firmness	Hard				
Width (inches)	36				
Average Grade (%)	2				
Average X-slope (%)	1.3				
Trail Condition Information					
Deferred Maintenance	\$0				
CRV	\$56894				
FCI	0				
Condition	Excellent				

Trail Condition TOTALS

Deferred Maintenance	CRV	FCI	Condition
\$0	\$56894	0	Excellent

TRAIL CONDITION



Trail Name: Riparian Way Trail

Refuge Name: Lee Metcalf NWR

Trail Number: T500

Region: 6

TOTAL LENGTH: 0.56 Miles

Section Number	001				
Section Length (miles)	0.56				
SAMMS Number	10053964				
Rating Date	7/14/2007				
Trail Section Information					
Trail Class	TC5				
Surface Type	Asphalt				
Surface Firmness	Paved				
Width (inches)	96				
Average Grade (%)	1				
Average X-slope (%)	1.8				
Trail Condition Information					
Deferred Maintenance	\$0				
CRV	\$146711				
FCI	0				
Condition	Excellent				

Trail Condition TOTALS

Deferred Maintenance	CRV	FCI	Condition
\$0	\$146711	0	Excellent

PHOTOGRAPHIC SHEET

TRAIL NUMBER: **T300**

STATION: Lee Metcalf NWR

DATE: 7/14/2007



Photo # 7 - MP 0.0 - Trailhead

TRAIL NUMBER: **T300**

STATION: Lee Metcalf NWR

DATE: 7/14/2007



Photo # 8 - MP 0.09 - Begin Section 002

PHOTOGRAPHIC SHEET

TRAIL NUMBER: **T301**

STATION: Lee Metcalf NWR

DATE: 7/14/2007



Photo # 10 - MP 0.0 - Trailhead

TRAIL NUMBER: **T500**

STATION: Lee Metcalf NWR

DATE: 7/14/2007



Photo # 1 - MP 0.0 - Trailhead

PHOTOGRAPHIC SHEET

TRAIL NUMBER: **T500**

STATION: Lee Metcalf NWR

DATE: 7/14/2007



Photo # 2 - MP 0.02 - Sign

TRAIL NUMBER: **T500**

STATION: Lee Metcalf NWR

DATE: 7/14/2007



Photo # 6 - MP 0.48 - Other (Pavilion (SAMMS 10026663))

The Trail Inventory of Medicine Lake National Wildlife Refuge Medicine Lake, Montana



**Prepared By:
Federal Highway Administration
Central Federal Lands Highway Division
July 2007**



Medicine Lake NWR

Trail and Trail Feature Summaries

Trail Miles and Percentages by Surface Type and Condition

Trail Surface Type	Mileage by Trail Condition												Total Miles
	Excellent		Good		Fair		Poor		Very Poor		Not Rated*		
	MILES	%	MILES	%	MILES	%	MILES	%	MILES	%	MILES	%	
Native		0%		0%		0%		0%		0%		0%	0.00
Gravel		0%		0%		0%		0%		0%		0%	0.00
Asphalt		0%		0%		0%		0%		0%		0%	0.00
Concrete		0%		0%		0%		0%		0%		0%	0.00
Turnpike		0%		0%		0%		0%		0%		0%	0.00
Boardwalk		0%		0%		0%		0%		0%		0%	0.00
Puncheon		0%		0%		0%		0%		0%		0%	0.00
Woodchips		0%		0%		0%		0%		0%		0%	0.00
Mowed	0.58	100%		0%		0%		0%		0%		0%	0.58
Admin Road		0%		0%		0%		0%		0%		0%	0.00
Other		0%		0%		0%		0%		0%		0%	0.00
Totals	0.58	100%	0.00	0%	0.00	0%	0.00	0%	0.00	0%	0.00	0%	0.58

Trail Miles and Percentages by Trail Classification and Condition

Trail Classification	Mileage by Trail Condition												Total Miles
	Excellent		Good		Fair		Poor		Very Poor		Not Rated*		
	MILES	%	MILES	%	MILES	%	MILES	%	MILES	%	MILES	%	
TC1		0%		0%		0%		0%		0%		0%	0.00
TC2	0.58	100%		0%		0%		0%		0%		0%	0.58
TC3		0%		0%		0%		0%		0%		0%	0.00
TC4		0%		0%		0%		0%		0%		0%	0.00
TC5		0%		0%		0%		0%		0%		0%	0.00
Totals	0.58	100%	0.00	0%	0.00	0%	0.00	0%	0.00	0%	0.00	0%	0.58

* Admin Roads are included in the inventory but are not rated for condition.

Trail Features

Trail Number	Feature Type	Quantity	Grouped Feature	Milepost	Photo
T200	Bench	1	No	0.57	N/A
sf-square feet lf-linear feet cf-cubic feet					

This topographic map of Medicine Lake, California, shows the area around the city and the lake. Key features include:

- Medicine Lake:** The large body of water in the center, labeled "MEDICINE LAKE 1933 LAKE".
- Rte 010:** A major road running horizontally across the middle of the map.
- Rte 015:** A road running vertically through the center, crossing Rte 010.
- Rte 016:** A road branching off Rte 015 to the east.
- T200:** A blue-shaded area located south of Rte 015 and east of Rte 010.
- Medicine Lake:** The city area is shown in the upper left, with several buildings and streets.
- Medicine Lake Cem:** A cemetery located in the upper right.
- Topography:** Contour lines indicate elevation, with peaks around 2000 feet and lower areas near the lake.
- Grid:** A coordinate grid is overlaid on the map, with letters A through Z and numbers 1 through 36.

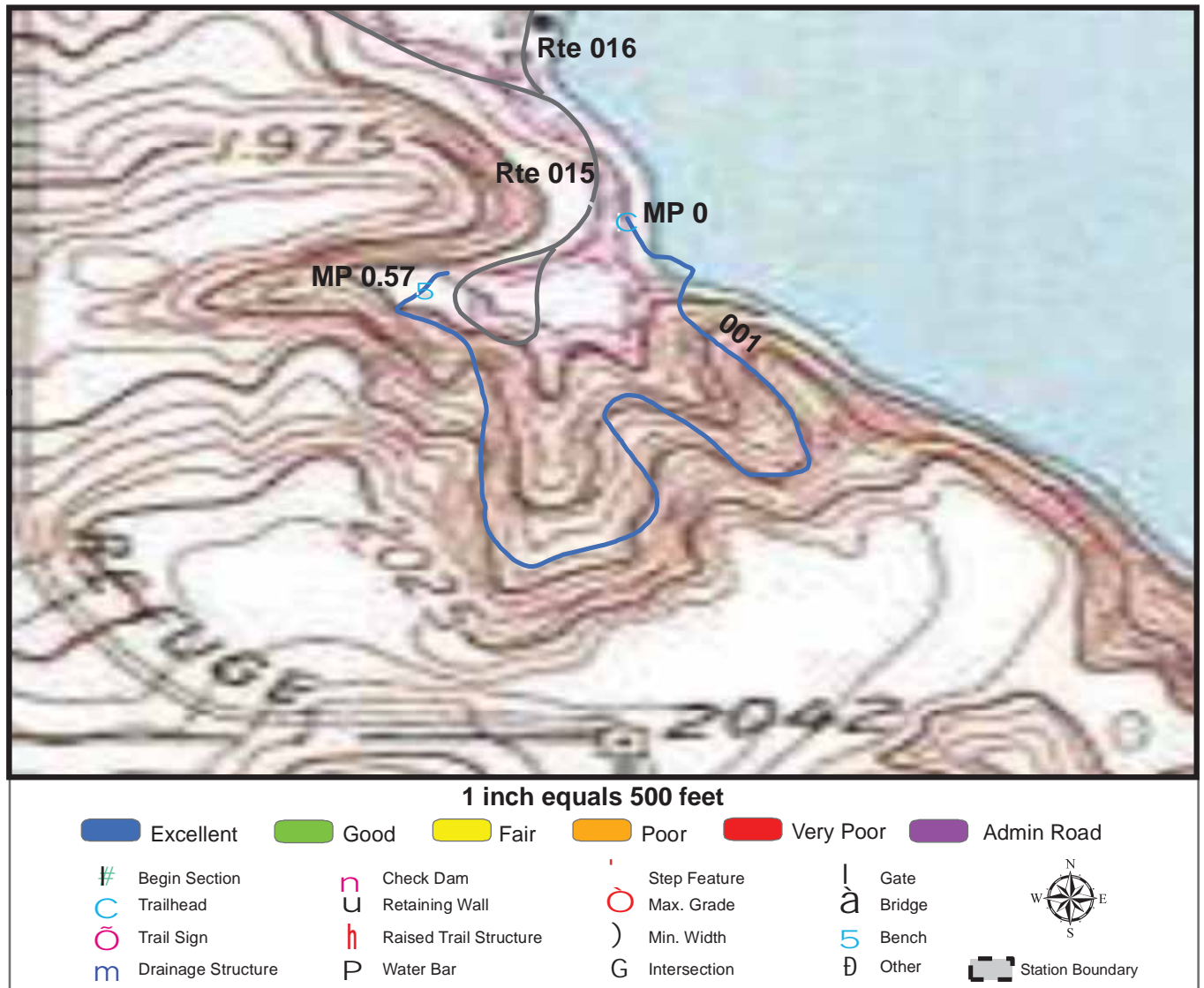
TRAILS ID

Station Name: Medicine Lake NWR

Org. Code: 61530

Trail #	Trail Name	Surface Type(s)	SAMMS	Trail Mileage	Trail Description (Begin and End point of trail)
T200	Interpretive Trail	Mowed	10026183	0.58	From Parking Area (not in inventory) to Rte 015

TRAIL CONDITION



Trail Name: Interpretive Trail

Refuge Name: Medicine Lake NWR

Trail Number: T200

Region: 6

TOTAL LENGTH: 0.58 Miles

Section Number	001				
Section Length (miles)	0.58				
SAMMS Number	10026183				
Rating Date	7/16/2007				
Trail Section Information					
Trail Class	TC2				
Surface Type	Mowed				
Surface Firmness	Firm				
Width (inches)	84				
Average Grade (%)	7.7				
Average X-slope (%)	7.7				
Trail Condition Information					
Deferred Maintenance	\$0				
CRV	\$19707				
FCI	0				
Condition	Excellent				

Trail Condition TOTALS

Deferred Maintenance	CRV	FCI	Condition
\$0	\$19707	0	Excellent

PHOTOGRAPHIC SHEET

TRAIL NUMBER: **T200**

STATION: Medicine Lake NWR

DATE: 7/16/2007



Photo # 2475 - MP 0.0 - Trailhead

The Trail Inventory of National Bison Range Moiese, Montana



**Prepared By:
Federal Highway Administration
Central Federal Lands Highway Division
July 2007**



National Bison Range

Trail and Trail Feature Summaries

Trail Miles and Percentages by Surface Type and Condition

Trail Surface Type	Mileage by Trail Condition												Total Miles
	Excellent		Good		Fair		Poor		Very Poor		Not Rated*		
	MILES	%	MILES	%	MILES	%	MILES	%	MILES	%	MILES	%	
Native	0.63	32%		0%		0%		0%		0%		0%	0.63
Gravel	0.53	27%		0%		0%		0%		0%		0%	0.53
Asphalt	0.41	21%		0%		0%		0%		0%		0%	0.41
Concrete		0%		0%		0%		0%		0%		0%	0.00
Turnpike		0%		0%		0%		0%		0%		0%	0.00
Boardwalk		0%		0%		0%		0%		0%		0%	0.00
Puncheon		0%		0%		0%		0%		0%		0%	0.00
Woodchips		0%		0%		0%		0%		0%		0%	0.00
Mowed		0%		0%		0%		0%		0%		0%	0.00
Admin Road		0%		0%		0%		0%		0%	0.39	20%	0.39
Other		0%		0%		0%		0%		0%		0%	0.00
Totals	1.57	80%	0.00	0%	0.00	0%	0.00	0%	0.00	0%	0.39	20%	1.96

Trail Miles and Percentages by Trail Classification and Condition

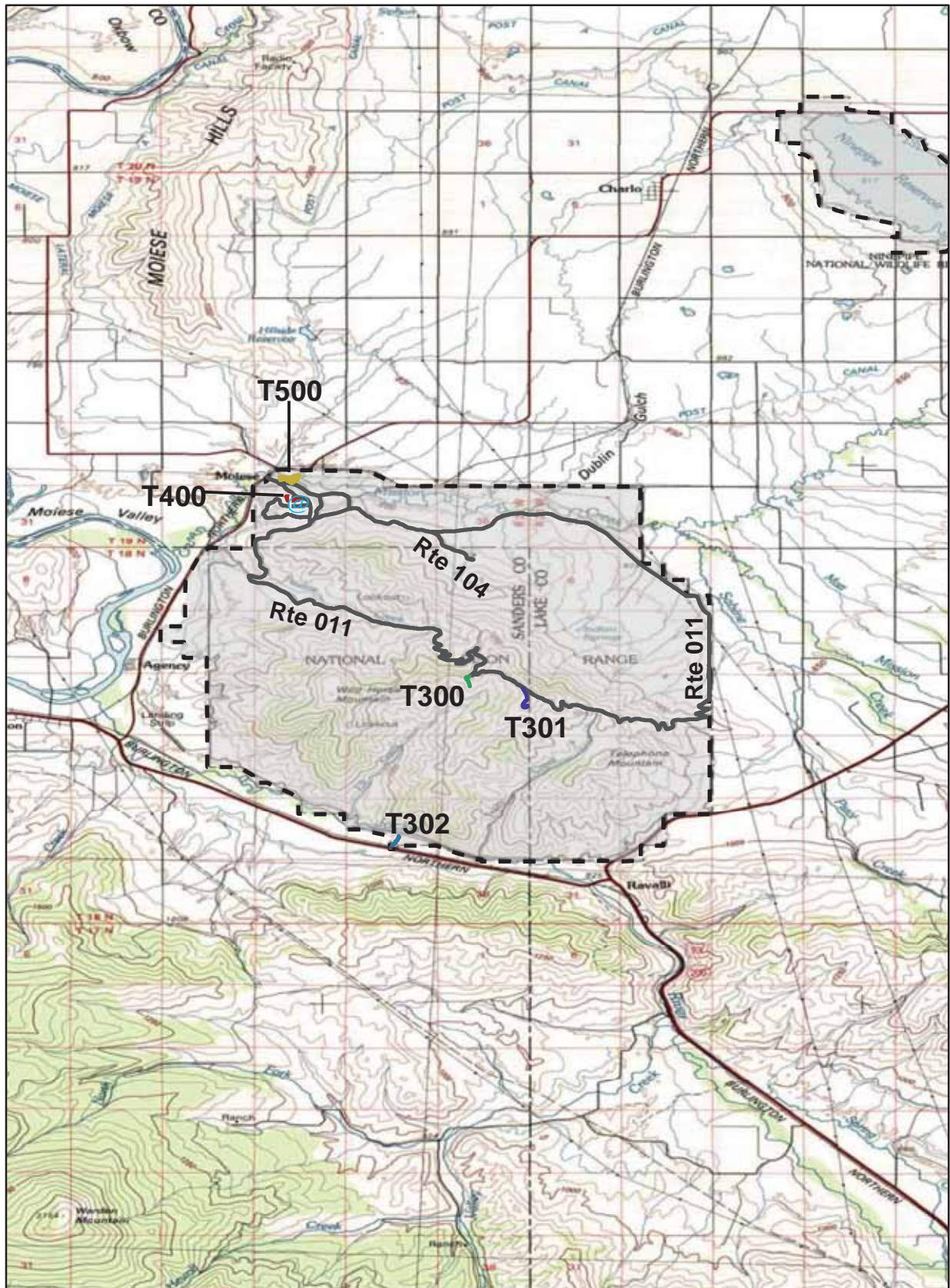
Trail Classification	Mileage by Trail Condition												Total Miles
	Excellent		Good		Fair		Poor		Very Poor		Not Rated*		
	MILES	%	MILES	%	MILES	%	MILES	%	MILES	%	MILES	%	
TC1		0%		0%		0%		0%		0%		0%	0.00
TC2		0%		0%		0%		0%		0%		0%	0.00
TC3	1.16	59%		0%		0%		0%		0%	0.39	20%	1.55
TC4		0%		0%		0%		0%		0%		0%	0.00
TC5	0.41	21%		0%		0%		0%		0%		0%	0.41
Totals	1.57	80%	0.00	0%	0.00	0%	0.00	0%	0.00	0%	0.39	20%	1.96

* Admin Roads are included in the inventory but are not rated for condition.

Trail Features

Trail Number	Feature Type	Quantity	Grouped Feature	Milepost	Photo
T300	Sign	1	No	0.00	16
T300	Sign	1	No	0.20	19
T301	Sign	1	No	0.00	20
T301	Gate	1	No	0.02	N/A
T301	Bench	6	Yes	N/A	N/A
T302	Sign	1	No	0.02	25
T500	Bench	5	Yes	N/A	N/A
T500	Bridge -sf	240	No	0.07	11
T500	Lookout/Ob Deck	1	No	0.07	N/A
T500	Sign	1	No	0.08	3
T500	Sign	11	Yes	N/A	5
T500	Water Control Struc	1	No	0.16	N/A
T500	Bridge -sf	300	No	0.18	12
T500	Sign	2	No	0.25	9
sf-square feet lf-linear feet cf-cubic feet					

NATIONAL BISON RANGE TRAIL LOCATION MAP



Station Boundary



HQ/VC

0 3 6 Miles

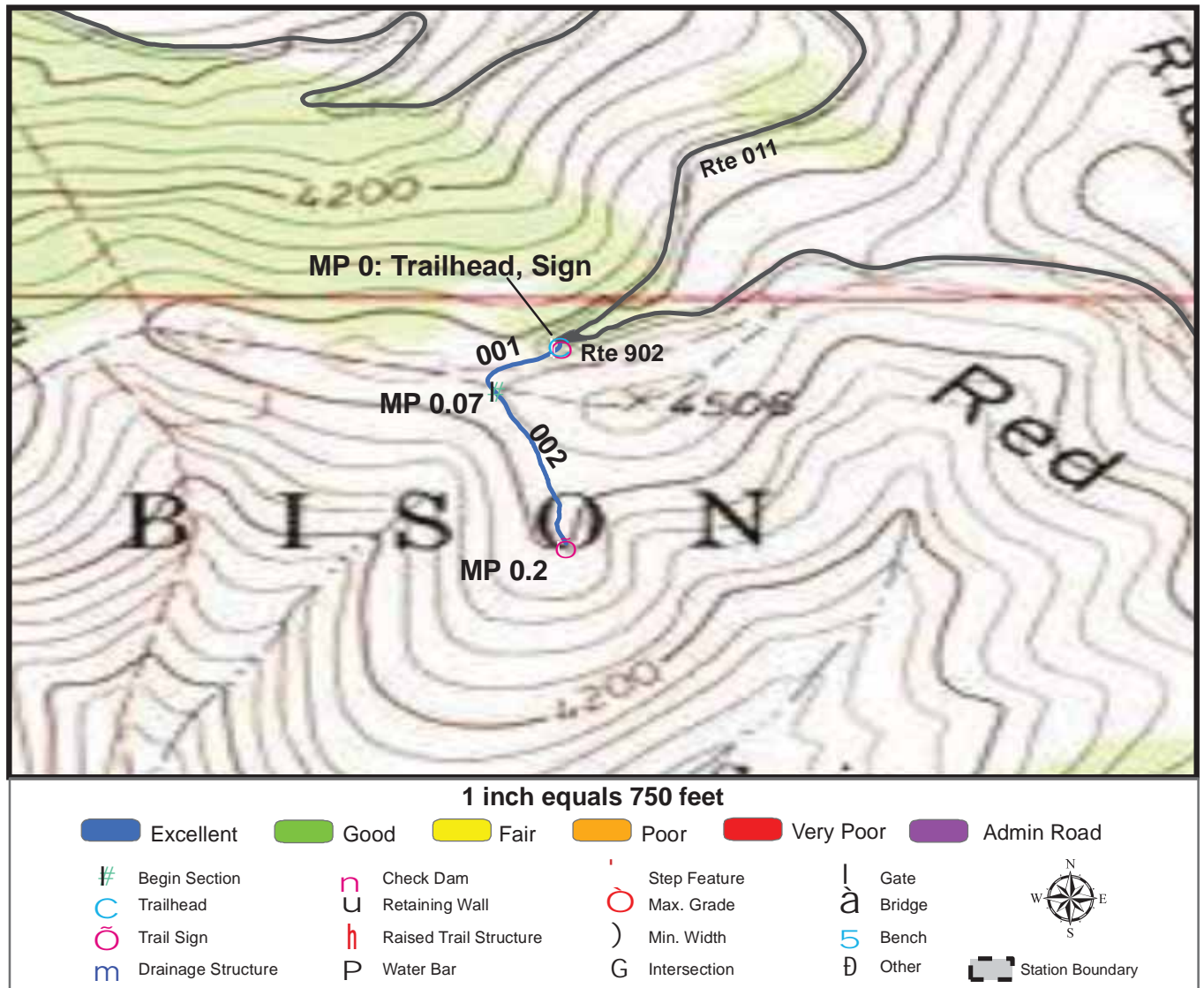
TRAILS ID

Station Name: National Bison Range

Org. Code: 61540

Trail #	Trail Name	Surface Type(s)	SAMMS	Trail Mileage	Trail Description (Begin and End point of trail)
T300	Bitterroot Trail	Gravel	10051475	0.2	From Bitterroot Trail Parking (Rte 902) to end of trail
T301	High Point Trail	Admin Road	N/A	0.39	From Auto Tour Route (Rte 011) to Radio Tower
T302	Jocko River Fishing Access Trail	Native	N/A	0.18	From Jocko River Fishing Access Parking (Rte 906) to end of trail
T400	Grassland Trail	Gravel	10026357	0.33	From Headquarters to end of trail loop
T500	Nature Trail	Asphalt, Native	10026356	0.86	From Nature Trail Parking (Rte 901) to end of trail at Sec 003

TRAIL CONDITION



Trail Name: Bitterroot Trail

Refuge Name: National Bison Range

Trail Number: T300

Region: 6

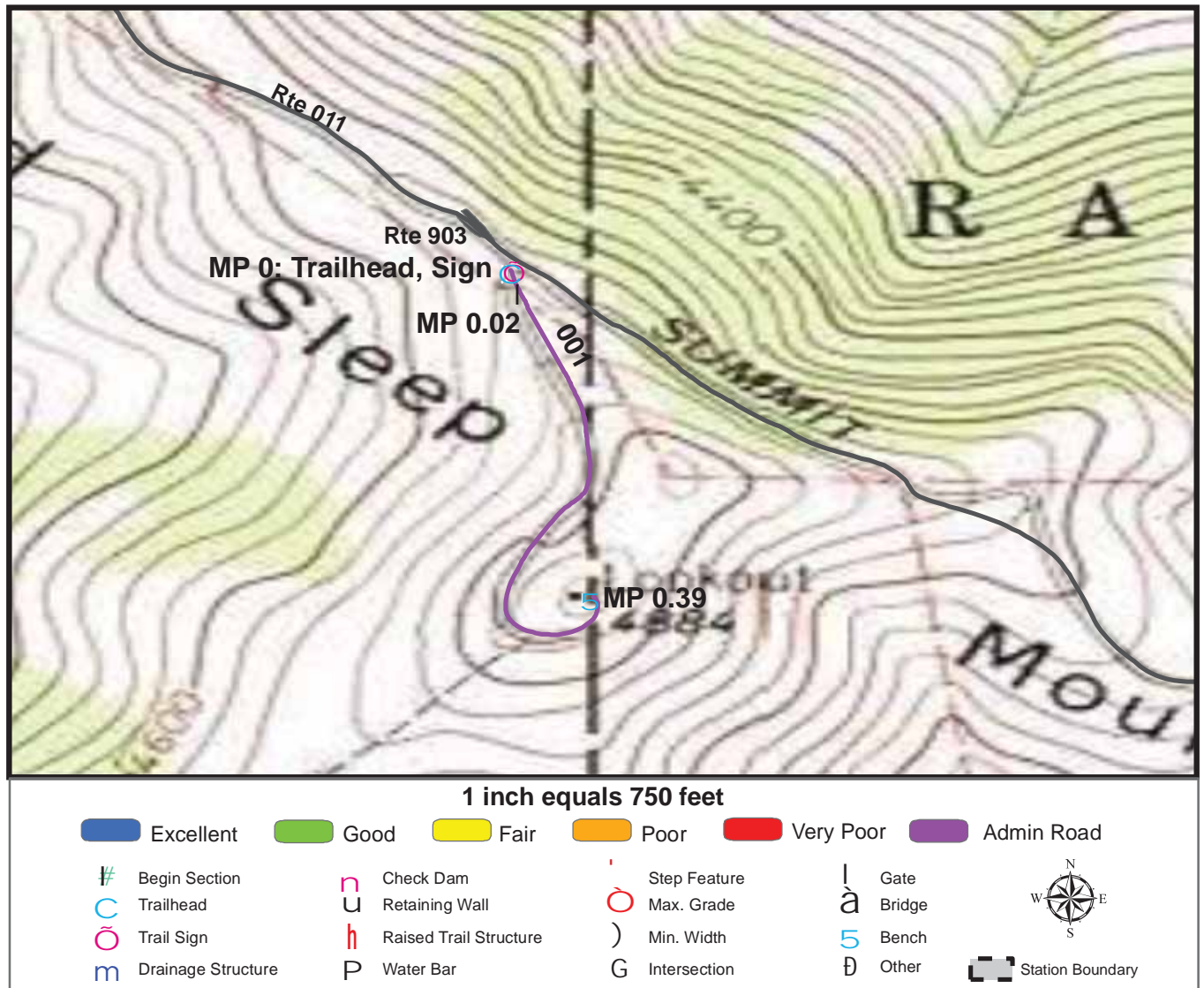
TOTAL LENGTH: 0.2 Miles

Section Number	001	002		
Section Length (miles)	0.07	0.13		
SAMMS Number	10051475	10051475		
Rating Date	7/14/2007	7/14/2007		
Trail Section Information				
Trail Class	TC3	TC3		
Surface Type	Gravel	Gravel		
Surface Firmness	Hard	Hard		
Width (inches)	60	36		
Average Grade (%)	7.1	7.1		
Average X-slope (%)	3.4	3.4		
Trail Condition Information				
Deferred Maintenance	\$0	\$0		
CRV	\$8491	\$10267		
FCI	0	0		
Condition	Excellent	Excellent		

Trail Condition TOTALS

Deferred Maintenance	CRV	FCI	Condition
\$0	\$18758	0	Excellent

TRAIL CONDITION



Trail Name: High Point Trail

Refuge Name: National Bison Range

Trail Number: T301

Region: 6

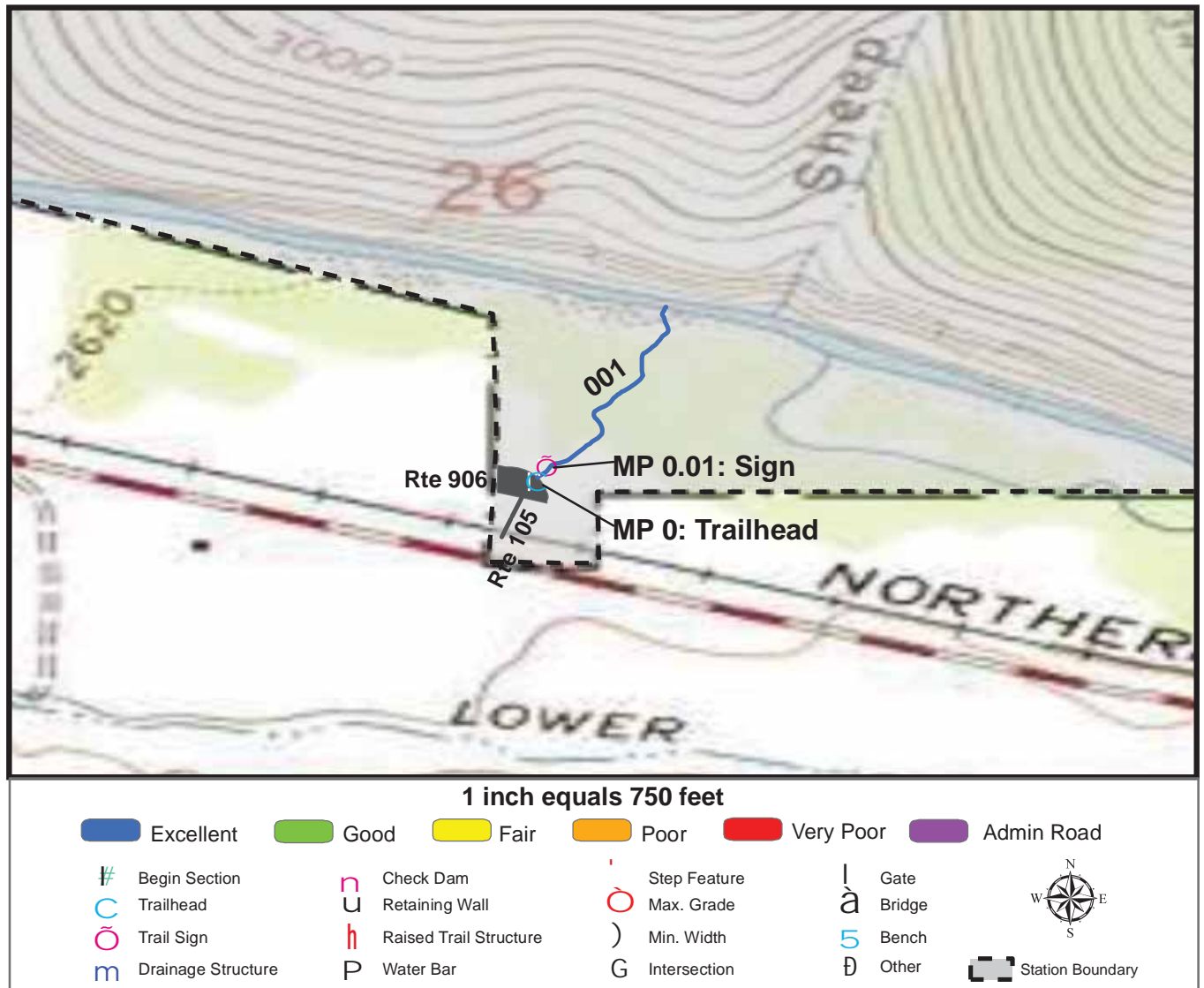
TOTAL LENGTH: 0.39 Miles

Section Number	001				
Section Length (miles)	0.39				
SAMMS Number	N/A				
Rating Date	7/14/2007				
Trail Section Information					
Trail Class	TC3				
Surface Type	Admin Road				
Surface Firmness	Hard				
Width (inches)	144				
Average Grade (%)	8.3				
Average X-slope (%)	3.7				
Trail Condition Information					
Deferred Maintenance	\$0				
CRV	\$0				
FCI	0				
Condition	Not Rated				

Trail Condition TOTALS

Deferred Maintenance	CRV	FCI	Condition
\$0	\$0	0	Not Rated

TRAIL CONDITION



Trail Name: Jocko River Fishing Access Trail

Refuge Name: National Bison Range

Trail Number: T302

Region: 6

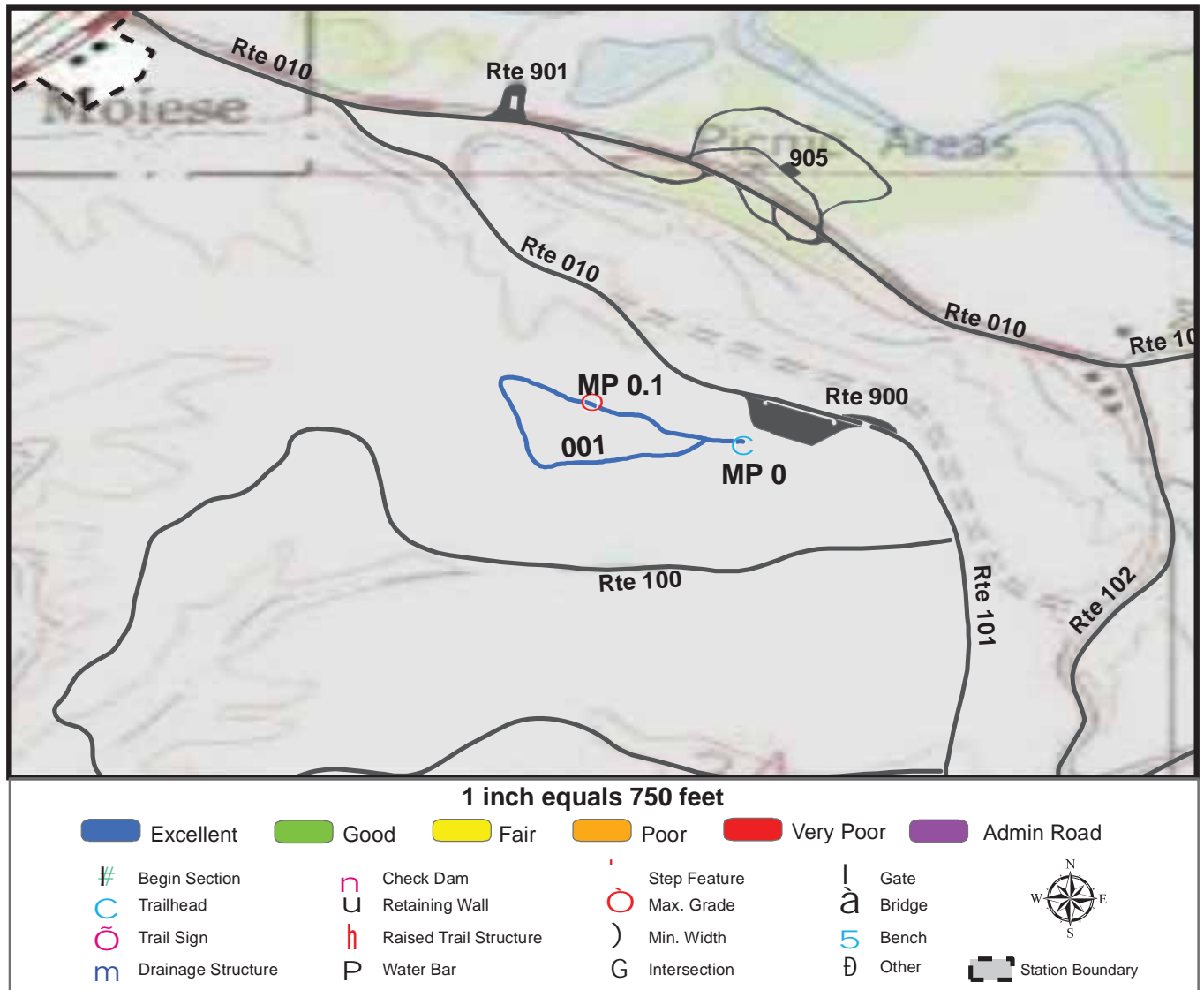
TOTAL LENGTH: 0.18 Miles

Section Number	001				
Section Length (miles)	0.18				
SAMMS Number	N/A				
Rating Date	7/14/2007				
Trail Section Information					
Trail Class	TC3				
Surface Type	Native				
Surface Firmness	Firm				
Width (inches)	24				
Average Grade (%)	6				
Average X-slope (%)	0.6				
Trail Condition Information					
Deferred Maintenance	\$0				
CRV	\$8338				
FCI	0				
Condition	Excellent				

Trail Condition TOTALS

Deferred Maintenance	CRV	FCI	Condition
\$0	\$8338	0	Excellent

TRAIL CONDITION



Trail Name: Grassland Trail

Refuge Name: National Bison Range

Trail Number: T400

Region: 6

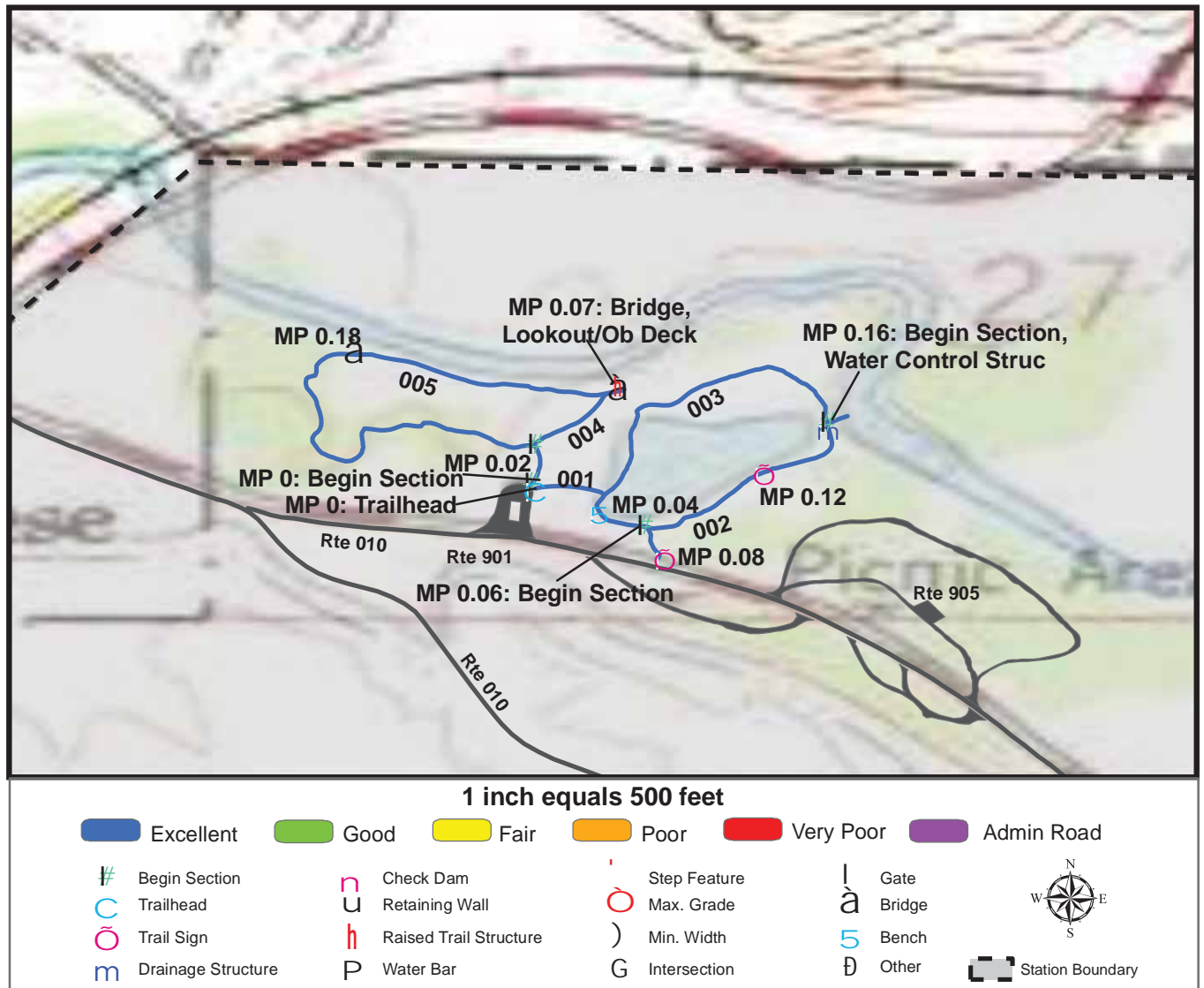
TOTAL LENGTH: 0.33 Miles

Section Number	001				
Section Length (miles)	0.33				
SAMMS Number	10026357				
Rating Date	7/14/2007				
Trail Section Information					
Trail Class	TC3				
Surface Type	Gravel				
Surface Firmness	Hard				
Width (inches)	48				
Average Grade (%)	5.9				
Average X-slope (%)	1.5				
Trail Condition Information					
Deferred Maintenance	\$0				
CRV	\$33787				
FCI	0				
Condition	Excellent				

Trail Condition TOTALS

Deferred Maintenance	CRV	FCI	Condition
\$0	\$33787	0	Excellent

TRAIL CONDITION



Trail Name: Nature Trail

Refuge Name: National Bison Range

Trail Number: T500

Region: 6

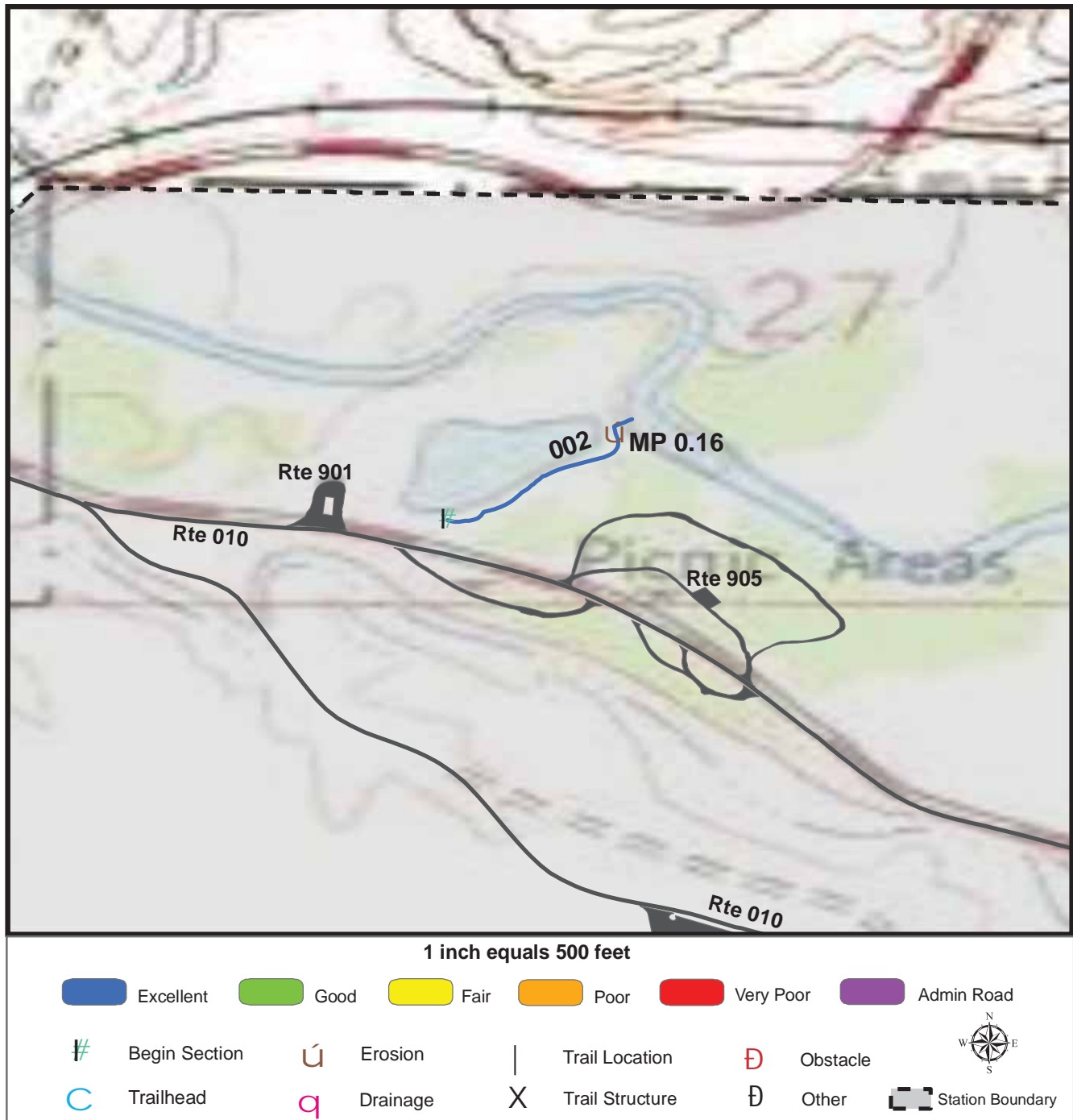
TOTAL LENGTH: 0.86 Miles

Section Number	001	002	003	004	005
Section Length (miles)	0.08	0.11	0.15	0.07	0.27
SAMMS Number	10026356	10026356	10026356	10026356	10026356
Rating Date	7/14/2007	7/14/2007	7/14/2007	7/14/2007	7/14/2007
Trail Section Information					
Trail Class	TC5	TC5	TC5	TC5	TC3
Surface Type	Asphalt	Asphalt	Asphalt	Asphalt	Native
Surface Firmness	Paved	Paved	Paved	Paved	Hard
Width (inches)	48	48	48	48	28
Average Grade (%)	2.3	2.3	2.3	2.3	2.3
Average X-slope (%)	1.9	1.9	1.9	1.9	1.9
Trail Condition Information					
Deferred Maintenance	\$0	\$60	\$0	\$0	\$0
CRV	\$10108	\$14364	\$19607	\$22954	\$32229
FCI	0	0.004	0	0	0
Condition	Excellent	Excellent	Excellent	Excellent	Excellent

Trail Condition TOTALS

Deferred Maintenance	CRV	FCI	Condition
\$60	\$108988	0.001	Excellent

TRAIL DEFICIENCY



Trail Name: Nature Trail

Refuge Name: National Bison Range

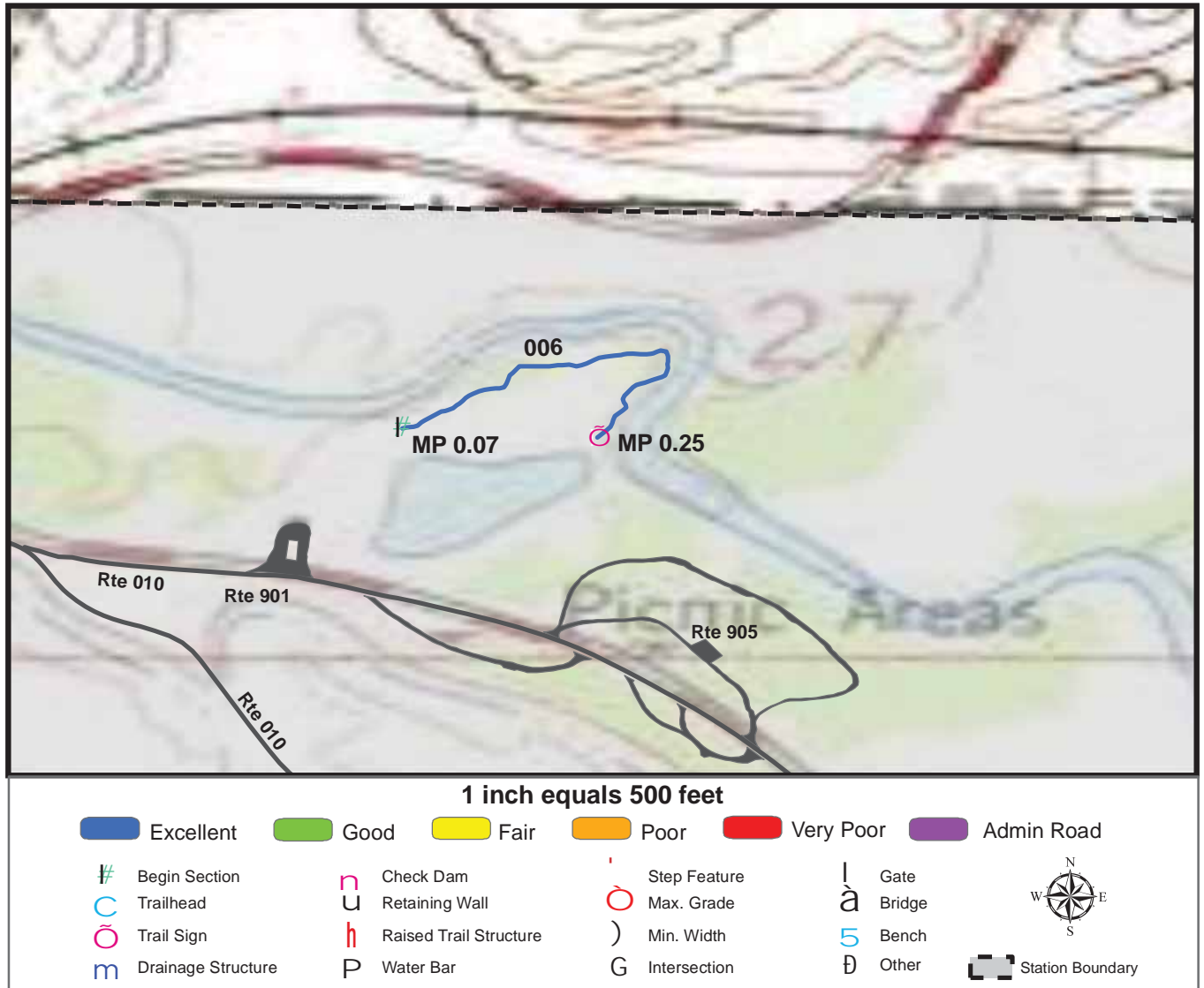
Trail Number: T500

Region: 6

TOTAL LENGTH: 0.86 Miles

Mile Post	0.16			
Section Number	002			
Photo Number	6			
Deficiency	Erosion			
Action	Repair			
Item	Tread -sf			
Quantity	5			
Deferred Maintenance	\$60			

TRAIL CONDITION



Trail Name: Nature Trail

Refuge Name: National Bison Range

Trail Number: T500

Region: 6

TOTAL LENGTH: 0.86 Miles

Section Number	006				
Section Length (miles)	0.18				
SAMMS Number	10026356				
Rating Date	7/14/2007				
Trail Section Information					
Trail Class	TC3				
Surface Type	Native				
Surface Firmness	Hard				
Width (inches)	28				
Average Grade (%)	2.3				
Average X-slope (%)	1.9				
Trail Condition Information					
Deferred Maintenance	\$0				
CRV	\$9726				
FCI	0				
Condition	Excellent				

Trail Condition TOTALS

Deferred Maintenance	CRV	FCI	Condition
\$60	\$108988	0.001	Excellent

PHOTOGRAPHIC SHEET

TRAIL NUMBER: **T300**

STATION: National Bison Range

DATE: 7/14/2007



Photo # 17 - MP 0.0 - Trailhead

TRAIL NUMBER: **T300**

STATION: National Bison Range

DATE: 7/14/2007



Photo # 16 - MP 0.0 - Sign

PHOTOGRAPHIC SHEET

TRAIL NUMBER: **T300**

STATION: National Bison Range

DATE: 7/14/2007



Photo # 18 - MP 0.07 - Begin Section 002

TRAIL NUMBER: **T300**

STATION: National Bison Range

DATE: 7/14/2007



Photo # 19 - MP 0.2 - Sign

PHOTOGRAPHIC SHEET

TRAIL NUMBER: **T301**

STATION: National Bison Range

DATE: 7/14/2007



Photo # 21 - MP 0.0 - Trailhead

TRAIL NUMBER: **T301**

STATION: National Bison Range

DATE: 7/14/2007



Photo # 20 - MP 0.0 - Sign

PHOTOGRAPHIC SHEET

TRAIL NUMBER: **T302**

STATION: National Bison Range

DATE: 7/14/2007



Photo # 24 - MP 0.0 - Trailhead

TRAIL NUMBER: **T400**

STATION: National Bison Range

DATE: 7/14/2007



Photo # 1 - MP 0.0 - Trailhead

PHOTOGRAPHIC SHEET

TRAIL NUMBER: **T500**

STATION: National Bison Range

DATE: 7/14/2007



Photo # 2 - MP 0.0 - Trailhead

TRAIL NUMBER: **T500**

STATION: National Bison Range

DATE: 7/14/2007



Photo # 10 - MP 0.0 - Begin Section 004

PHOTOGRAPHIC SHEET

TRAIL NUMBER: **T500**

STATION: National Bison Range

DATE: 7/14/2007



Photo # 13 - MP 0.02 - Begin Section 005

TRAIL NUMBER: **T500**

STATION: National Bison Range

DATE: 7/14/2007



Photo # 4 - MP 0.06 - Begin Section 002

PHOTOGRAPHIC SHEET

TRAIL NUMBER: **T500**

STATION: National Bison Range

DATE: 7/14/2007



Photo # 11 - MP 0.07 - Bridge

TRAIL NUMBER: **T500**

STATION: National Bison Range

DATE: 7/14/2007



Photo # 14 - MP 0.07 - Begin Section 006

PHOTOGRAPHIC SHEET

TRAIL NUMBER: **T500**

STATION: National Bison Range

DATE: 7/14/2007



Photo # 3 - MP 0.08 - Sign

TRAIL NUMBER: **T500**

STATION: National Bison Range

DATE: 7/14/2007

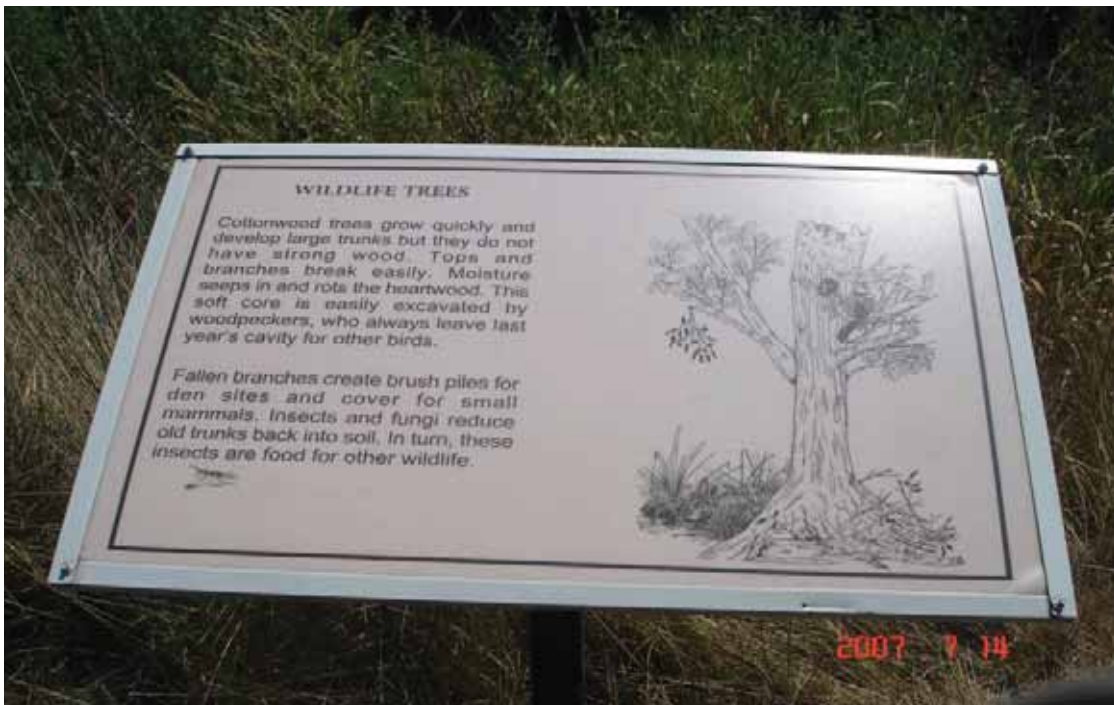


Photo # 5 - MP 0.12 - Sign (Grouped Feature)

PHOTOGRAPHIC SHEET

TRAIL NUMBER: **T500**

STATION: National Bison Range

DATE: 7/14/2007



Photo # 6 - MP 0.16 - Erosion Deficiency

TRAIL NUMBER: **T500**

STATION: National Bison Range

DATE: 7/14/2007



Photo # 8 - MP 0.16 - Begin Section 003

PHOTOGRAPHIC SHEET

TRAIL NUMBER: **T500**

STATION: National Bison Range

DATE: 7/14/2007



Photo # 12 - MP 0.18 - Bridge

TRAIL NUMBER: **T500**

STATION: National Bison Range

DATE: 7/14/2007



Photo # 9 - MP 0.25 - Sign

The Trail Inventory of Ninepipe National Wildlife Refuge Moiese, Montana



**Prepared By:
Federal Highway Administration
Central Federal Lands Highway Division
July 2007**



Ninepipe NWR

Trail and Trail Feature Summaries

Trail Miles and Percentages by Surface Type and Condition

Trail Surface Type	Mileage by Trail Condition												Total Miles
	Excellent		Good		Fair		Poor		Very Poor		Not Rated*		
	MILES	%	MILES	%	MILES	%	MILES	%	MILES	%	MILES	%	
Native		0%		0%		0%		0%		0%		0%	0.00
Gravel		0%		0%		0%		0%		0%		0%	0.00
Asphalt	0.13	72%		0%		0%		0%		0%		0%	0.13
Concrete		0%	0.05	28%		0%		0%		0%		0%	0.05
Turnpike		0%		0%		0%		0%		0%		0%	0.00
Boardwalk		0%		0%		0%		0%		0%		0%	0.00
Puncheon		0%		0%		0%		0%		0%		0%	0.00
Woodchips		0%		0%		0%		0%		0%		0%	0.00
Mowed		0%		0%		0%		0%		0%		0%	0.00
Admin Road		0%		0%		0%		0%		0%		0%	0.00
Other		0%		0%		0%		0%		0%		0%	0.00
Totals	0.13	72%	0.05	28%	0.00	0%	0.00	0%	0.00	0%	0.00	0%	0.18

Trail Miles and Percentages by Trail Classification and Condition

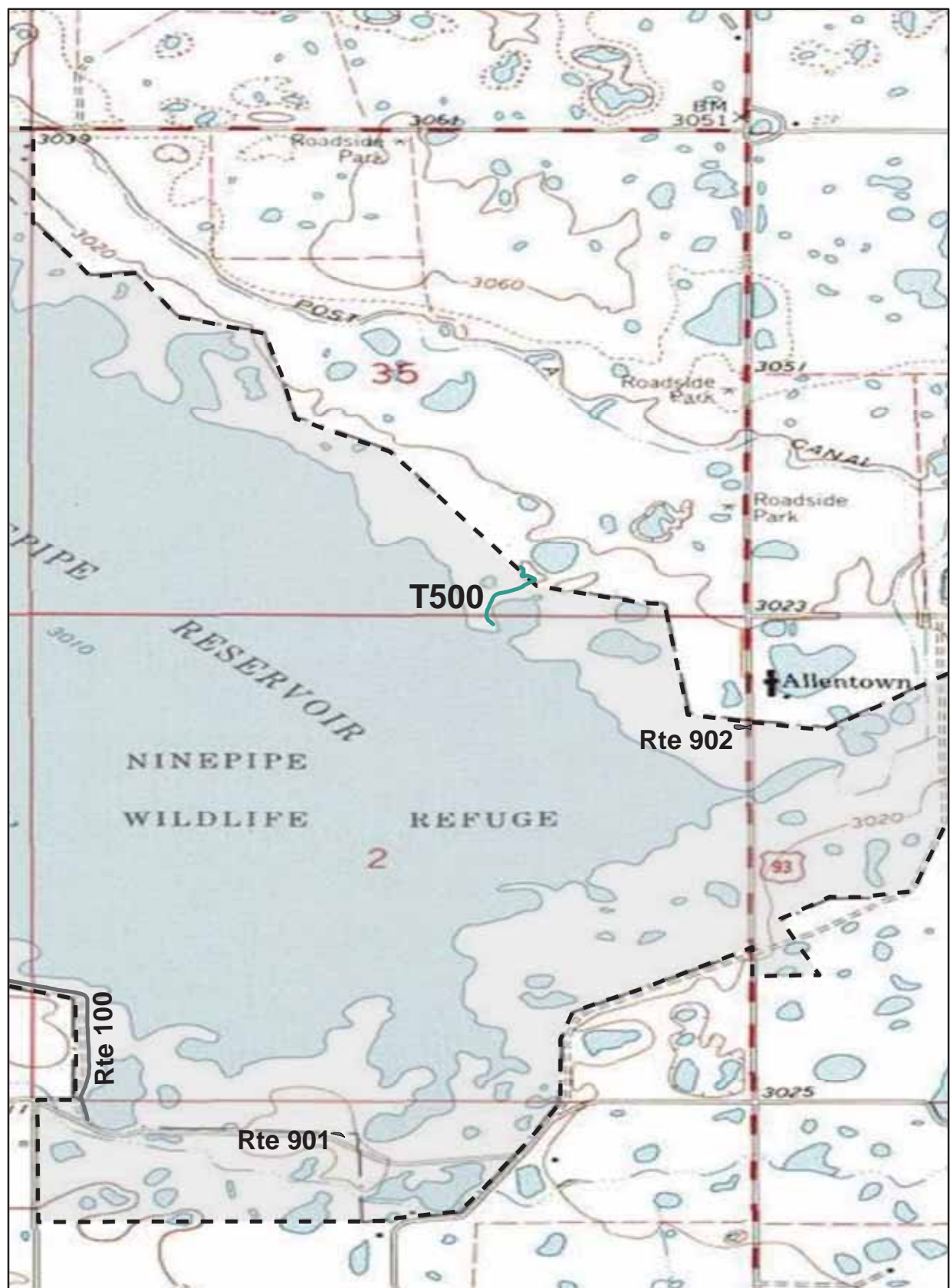
Trail Classification	Mileage by Trail Condition												Total Miles
	Excellent		Good		Fair		Poor		Very Poor		Not Rated*		
	MILES	%	MILES	%	MILES	%	MILES	%	MILES	%	MILES	%	
TC1		0%		0%		0%		0%		0%		0%	0.00
TC2		0%		0%		0%		0%		0%		0%	0.00
TC3		0%		0%		0%		0%		0%		0%	0.00
TC4		0%		0%		0%		0%		0%		0%	0.00
TC5	0.13	72%	0.05	28%		0%		0%		0%		0%	0.18
Totals	0.13	72%	0.05	28%	0.00	0%	0.00	0%	0.00	0%	0.00	0%	0.18

* Admin Roads are included in the inventory but are not rated for condition.

Trail Features

Trail Number	Feature Type	Quantity	Grouped Feature	Milepost	Photo
T500	Lookout/Ob Deck	1	No	0.02	N/A
T500	Sign	11	Yes	N/A	2
T500	Bench	5	Yes	N/A	N/A
sf-square feet lf-linear feet cf-cubic feet					

NINEPIPE NWR TRAIL LOCATION MAP



Station Boundary



HQ/VC

0 0.5 1 Miles

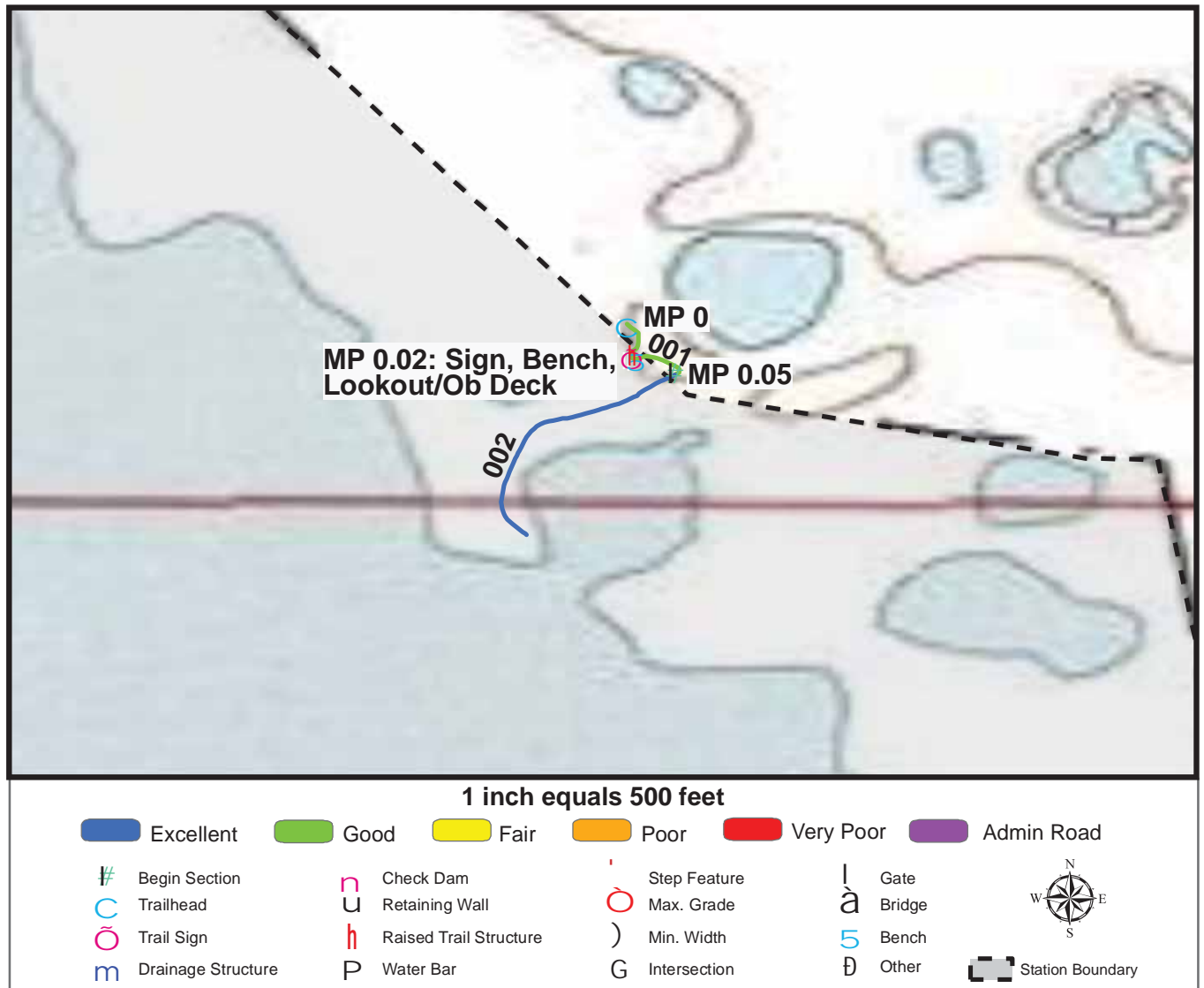
TRAILS ID

Station Name: Ninepipe NWR

Org. Code: 61541

Trail #	Trail Name	Surface Type(s)	SAMMS	Trail Mileage	Trail Description (Begin and End point of trail)
T500	Ninepipe Interpretive Nature Trail	Concrete, Asphalt	10051608	0.18	From overlook parking to lookout

TRAIL CONDITION



Trail Name: Ninepipe Interpretive Nature Trail

Refuge Name: Ninepipe NWR

Trail Number: T500

Region: 6

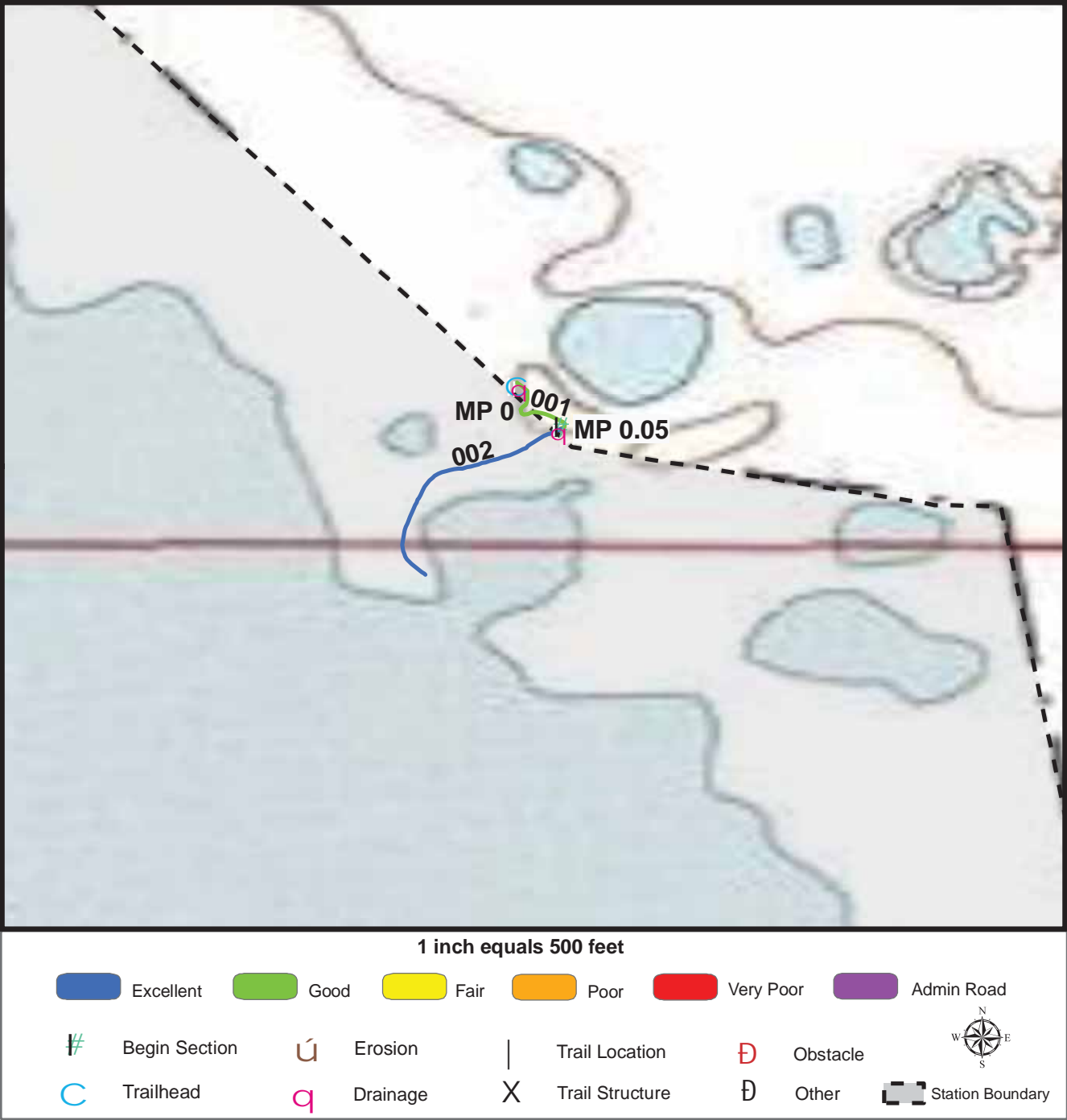
TOTAL LENGTH: 0.18 Miles

Section Number	001	002			
Section Length (miles)	0.05	0.13			
SAMMS Number	10051608	10051608			
Rating Date	7/14/2007	7/14/2007			
Trail Section Information					
Trail Class	TC5	TC5			
Surface Type	Concrete	Asphalt			
Surface Firmness	Paved	Paved			
Width (inches)	72	72			
Average Grade (%)	2	2			
Average X-slope (%)	0.8	0.8			
Trail Condition Information					
Deferred Maintenance	\$246	\$0			
CRV	\$10062	\$25024			
FCI	0.024	0			
Condition	Good	Excellent			

Trail Condition TOTALS

Deferred Maintenance	CRV	FCI	Condition
\$246	\$35086	0.007	Excellent

TRAIL DEFICIENCY



Trail Name: Ninepipe Interpretive Nature Trail		Refuge Name: Ninepipe NWR		
Trail Number: T500		Region:6		TOTAL LENGTH: 0.18 Miles
Mile Post	0	0.05		
Section Number	001	002		
Photo Number	1	3		
Deficiency	Drainage	Drainage		
Action	Repair	Repair		
Item	Tread -sf	Tread -sf		
Quantity	15	30		
Deferred Maintenance	\$97	\$149		

PHOTOGRAPHIC SHEET

TRAIL NUMBER: **T500**

STATION: Ninepipe NWR

DATE: 7/14/2007



Photo # 1 - MP 0.0 - Trailhead, Drainage Deficiency

TRAIL NUMBER: **T500**

STATION: Ninepipe NWR

DATE: 7/14/2007



Photo # 2 - MP 0.02 - Sign (Grouped)

PHOTOGRAPHIC SHEET

TRAIL NUMBER: T500

STATION: Ninepipe NWR

DATE: 11/29/2007



Photo # 3 - MP 0.05 - Drainage Deficiency, Begin Section 002

The Trail Inventory of Red Rock Lakes National Wildlife Refuge Lima, Montana



**Prepared By:
Federal Highway Administration
Central Federal Lands Highway Division
July 2007**



Red Rock Lakes NWR

Trail and Trail Feature Summaries

Trail Miles and Percentages by Surface Type and Condition

Trail Surface Type	Mileage by Trail Condition												Total Miles
	Excellent		Good		Fair		Poor		Very Poor		Not Rated*		
	MILES	%	MILES	%	MILES	%	MILES	%	MILES	%	MILES	%	
Native	1.45	48%		0%		0%		0%		0%		0%	1.45
Gravel		0%		0%		0%		0%		0%		0%	0.00
Asphalt		0%		0%		0%		0%		0%		0%	0.00
Concrete		0%		0%		0%		0%		0%		0%	0.00
Turnpike		0%		0%		0%		0%		0%		0%	0.00
Boardwalk		0%		0%		0%		0%		0%		0%	0.00
Puncheon		0%		0%		0%		0%		0%		0%	0.00
Woodchips		0%		0%		0%		0%		0%		0%	0.00
Mowed		0%		0%		0%		0%		0%		0%	0.00
Admin Road		0%		0%		0%		0%		0%	1.59	52%	1.59
Other		0%		0%		0%		0%		0%		0%	0.00
Totals	1.45	48%	0.00	0%	0.00	0%	0.00	0%	0.00	0%	1.59	52%	3.04

Trail Miles and Percentages by Trail Classification and Condition

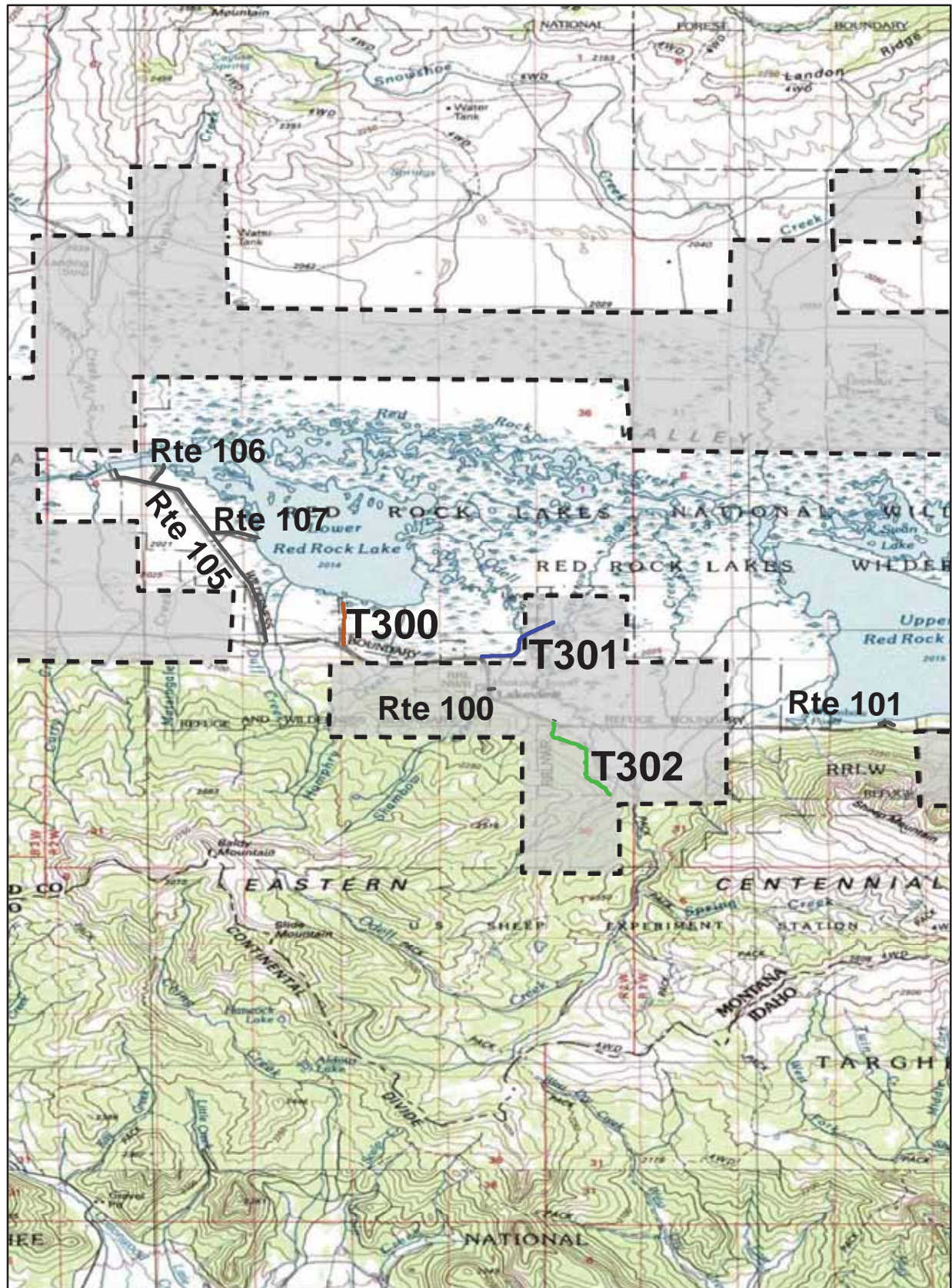
Trail Classification	Mileage by Trail Condition												Total Miles
	Excellent		Good		Fair		Poor		Very Poor		Not Rated*		
	MILES	%	MILES	%	MILES	%	MILES	%	MILES	%	MILES	%	
TC1		0%		0%		0%		0%		0%		0%	0.00
TC2		0%		0%		0%		0%		0%		0%	0.00
TC3	1.45	48%		0%		0%		0%		0%	1.59	52%	3.04
TC4		0%		0%		0%		0%		0%		0%	0.00
TC5		0%		0%		0%		0%		0%		0%	0.00
Totals	1.45	48%	0.00	0%	0.00	0%	0.00	0%	0.00	0%	1.59	52%	3.04

* Admin Roads are included in the inventory but are not rated for condition.

Trail Features

Trail Number	Feature Type	Quantity	Grouped Feature	Milepost	Photo
T300	Gate	1	No	0.01	N/A
T300	Culvert -lf	5	No	0.31	N/A
T301	Bridge -sf	200	No	0.60	3
T302	Sign	2	No	0.02	9
T302	Puncheon -lf	40	No	1.29	13
sf-square feet lf-linear feet cf-cubic feet					

RED ROCK LAKES NWR TRAIL LOCATION MAP



Station Boundary



HQ/VC

0

3

6

Miles

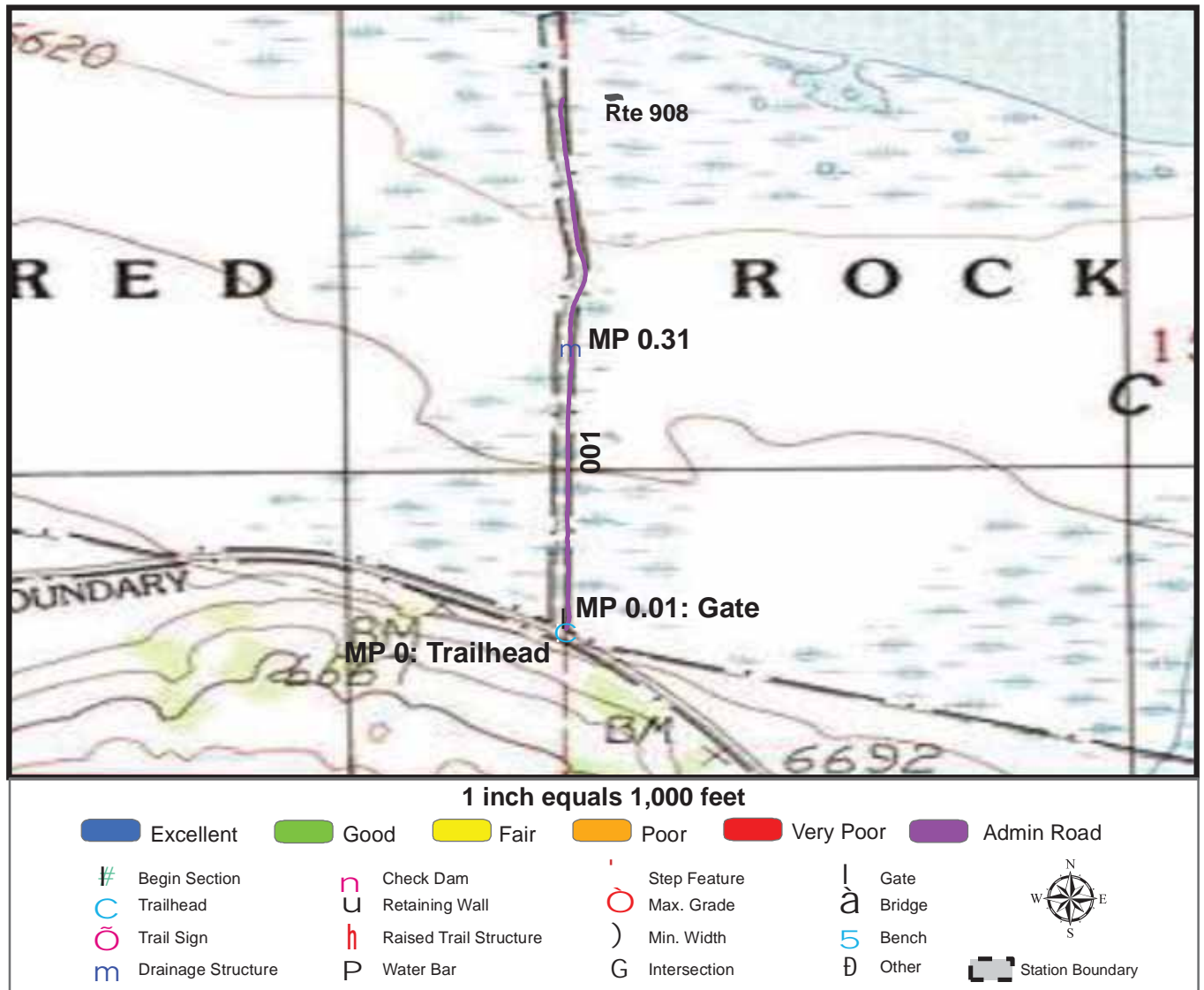
TRAILS ID

Station Name: Red Rock Lakes NWR

Org. Code: 61570

Trail #	Trail Name	Surface Type(s)	SAMMS	Trail Mileage	Trail Description (Begin and End point of trail)
T300	Idlewild Trail	Admin Road	N/A	0.59	From Southside Centennial Road to Lower Red Rock Lake
T301	Sparrow Pond Trail	Admin Road	N/A	1.00	From Monida-Lake View Road to end of trail
T302	Odell Trail	Native	N/A	1.45	From O'Dell Parking Area (Rte 901) to refuge boundary

TRAIL CONDITION



Trail Name: Idlewild Trail

Refuge Name: Red Rock Lakes NWR

Trail Number: T300

Region: 6

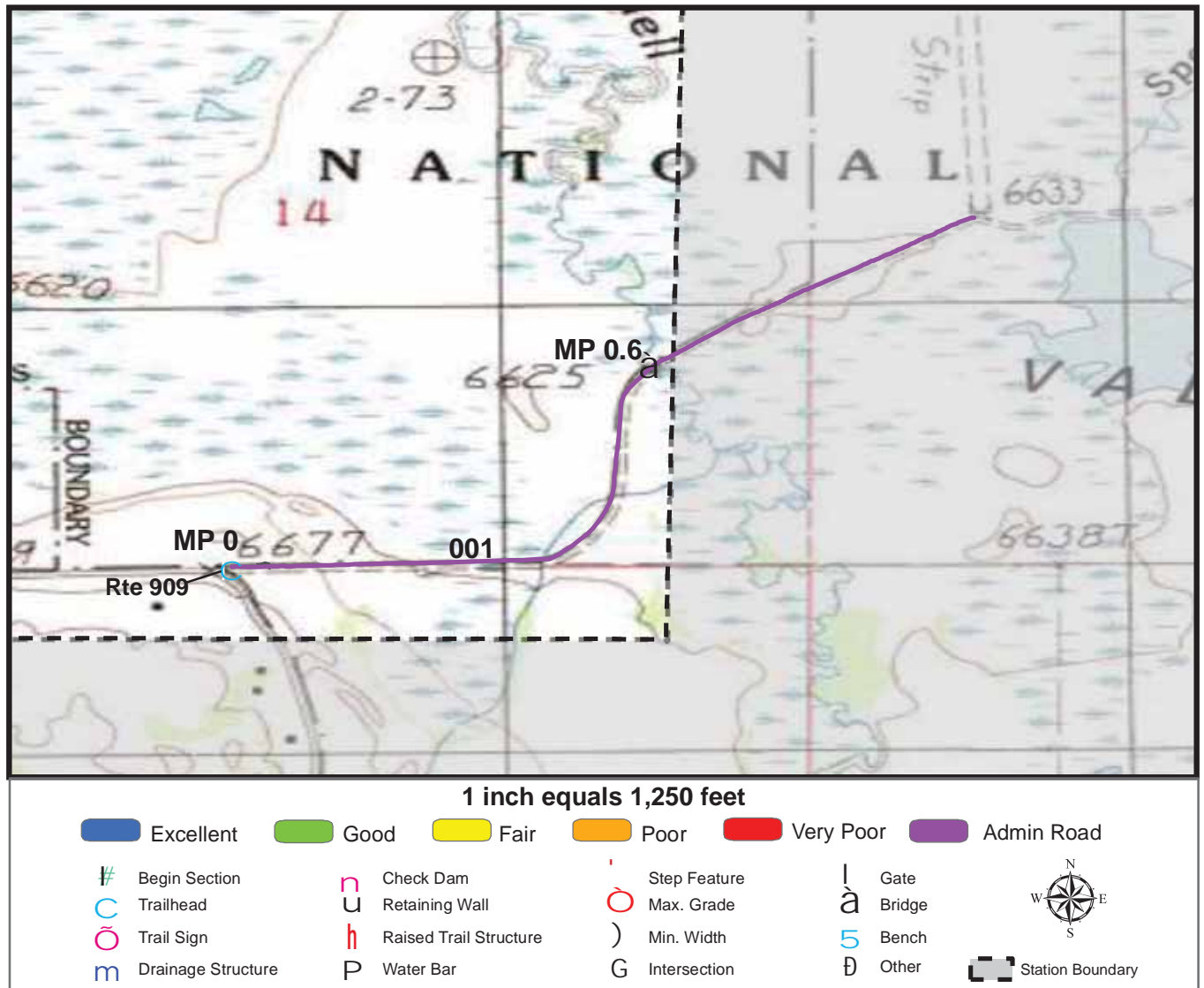
TOTAL LENGTH: 0.59 Miles

Section Number	001				
Section Length (miles)	0.59				
SAMMS Number					
Rating Date	7/15/2007				
Trail Section Information					
Trail Class	TC3				
Surface Type	Admin Road				
Surface Firmness	Hard				
Width (inches)	120				
Average Grade (%)	2				
Average X-slope (%)	2.5				
Trail Condition Information					
Deferred Maintenance	\$0				
CRV	\$0				
FCI	0				
Condition	Not Rated				

Trail Condition TOTALS

Deferred Maintenance	CRV	FCI	Condition
\$0	\$0	0	Not Rated

TRAIL CONDITION



Trail Name: Sparrow Pond Trail

Refuge Name: Red Rock Lakes NWR

Trail Number: T301

Region: 6

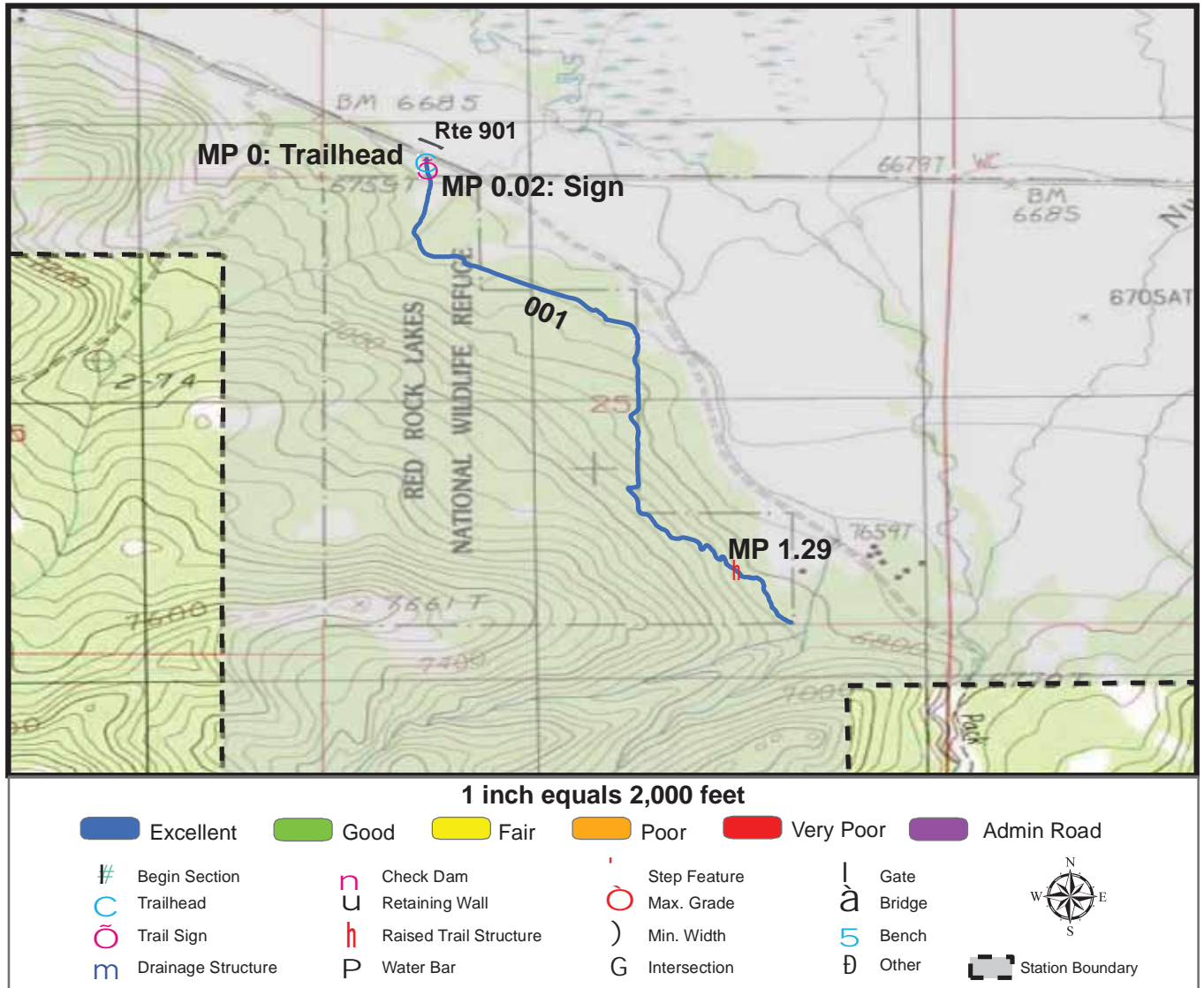
TOTAL LENGTH: 1 Miles

Section Number	001				
Section Length (miles)	1				
SAMMS Number					
Rating Date	7/15/2007				
Trail Section Information					
Trail Class	TC3				
Surface Type	Admin Road				
Surface Firmness	Hard				
Width (inches)	120				
Average Grade (%)	2.1				
Average X-slope (%)	3.5				
Trail Condition Information					
Deferred Maintenance	\$0				
CRV	\$0				
FCI	0				
Condition	Not Rated				

Trail Condition TOTALS

Deferred Maintenance	CRV	FCI	Condition
\$0	\$0	0	Not Rated

TRAIL CONDITION



Trail Name: Odell Trail

Refuge Name: Red Rock Lakes NWR

Trail Number: T302

Region: 6

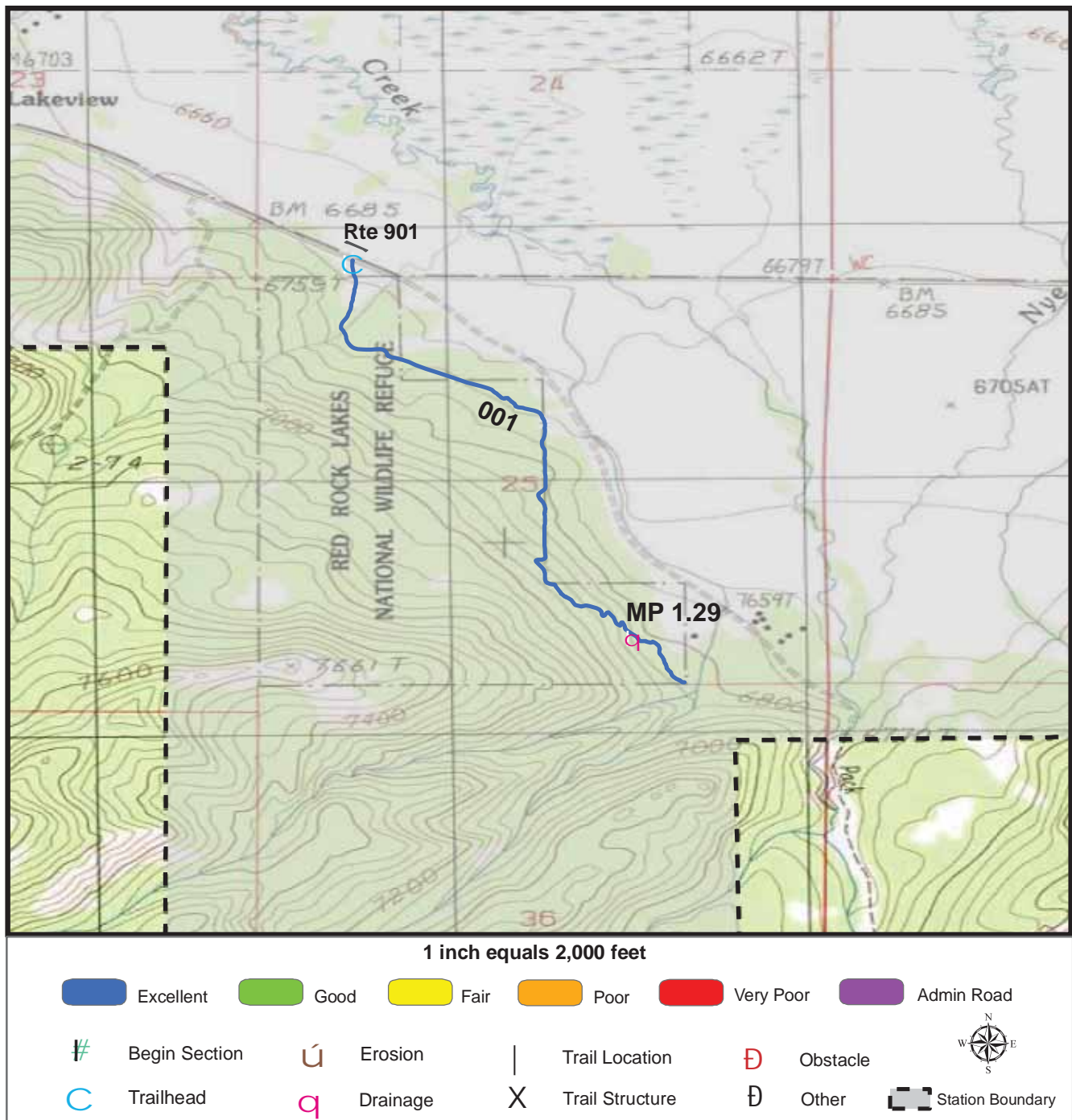
TOTAL LENGTH: 1.45 Miles

Section Number	001				
Section Length (miles)	1.45				
SAMMS Number					
Rating Date	7/15/2007				
Trail Section Information					
Trail Class	TC3				
Surface Type	Native				
Surface Firmness	Firm				
Width (inches)	24				
Average Grade (%)	13				
Average X-slope (%)	4.3				
Trail Condition Information					
Deferred Maintenance	\$429				
CRV	\$64803				
FCI	0.007				
Condition	Excellent				

Trail Condition TOTALS

Deferred Maintenance	CRV	FCI	Condition
\$429	\$64803	0.007	Excellent

TRAIL DEFICIENCY



Trail Name: Odell Trail

Refuge Name: Red Rock Lakes NWR

Trail Number: T302

Region: 6

TOTAL LENGTH: 1.45 Miles

Mile Post	1.29			
Section Number	001			
Photo Number	13			
Deficiency	Drainage			
Action	Build/Add			
Item	Puncheon -lf			
Quantity	40			
Deferred Maintenance	\$429			

PHOTOGRAPHIC SHEET

TRAIL NUMBER: **T300**

STATION: Red Rock Lakes NWR

DATE: 7/15/2007



Photo # 1 - MP 0.0 - Trailhead

TRAIL NUMBER: **T301**

STATION: Red Rock Lakes NWR

DATE: 7/15/2007



Photo # 2 - MP 0.0 - Trailhead

PHOTOGRAPHIC SHEET

TRAIL NUMBER: **T302**

STATION: Red Rock Lakes NWR

DATE: 7/15/2007



Photo # 22 - MP 0.0 - Trailhead

TRAIL NUMBER: **T302**

STATION: Red Rock Lakes NWR

DATE: 7/15/2007



Photo # 9 - MP 0.02 - Sign

PHOTOGRAPHIC SHEET

TRAIL NUMBER: **T302**

STATION: Red Rock Lakes NWR

DATE: 12:00:00 AM



Photo # 13 - MP 1.29 - Drainage Deficiency, Puncheon

APPENDIX

Glossary of Terms and Abbreviations

Acc Info	Accessibility information available at trailhead.
Action	Action required to correct deficiency.
Admin Road	Administration Road. Admin Roads signed and advertised as trails are included in the trail inventory but a condition assessment is NOT done.
Alt SAMMS	Asset number of Alternate Facility Type.
Alt Type	Alternate Facility Type. Trail lies on a feature such as a levee, dam, administrative road or bridge, which has a separate SAMMS number.
AvgGrade	The average grade of the trail (%). The average of five measurements for trails less than two miles and ten measurements for trails equal to or greater than 2 miles.
AvgSlope	The average cross-slope of the trail (%). The average of five measurements for trails less than two miles and ten measurements for trails equal to or greater than 2 miles.
Check Dam	A small dam constructed across a drainage ditch, swale, or channel to lower the speed of concentrated flows.
Condition	Subjective rating of trail based on Facility Condition Index (FCI): FCI \leq .01 = Excellent FCI .011 - .05 = Good FCI .051 - .10 = Fair FCI .11 - .20 = Poor FCI $>$.20 = Very Poor
Crib Wall	Retaining wall.
Current Replacement Value (CRV)	The value of an asset determined by the estimated cost of replacing it.
Def type	Deficiency Type: Trail Structure, Drainage, Erosion, Obstacle, Trail Location, Other.

Deferred Maintenance (DM)	Maintenance that was not performed when scheduled.
Elem ID	Unique identifier for each trail section: Org Code-Trail Number-Section Number.
Facility Condition Index (FCI)	DM/CRV
Grouped Features	Grouped features include non-unique signs (mileposts, interpretive signs, species identification, etc.), water bars, check dams, steps, drain and drainage dips. For any given grouped feature, a GPS point and photo are taken for the first occurrence only and the total number of features in the group are entered into the “quantity” field of the data dictionary. CRV for grouped features are included in whatever trail section the GPS point was taken.
Info Type	Type of accessibility information available at trailhead: brochure, sign or other.
Item	Item on which the “Action” (see above) will be performed.
Manage_Use	Managed use of the trail: HIKE, BIKE, NSPC (non-specified), PACK, POR (portage), SNOWSHOE, XSKI (cross-country ski), OTHER.
Max Grade	Maximum grade (in percent) of trail. Only collected for Trail Classes 4 and 5 and when > 10%.
Min Width	Minimum Width (inches) of trail. Only collected for Trail Classes 4 and 5.
MP (Milepost)	Distance, in miles, of a trail feature or deficiency from the Trailhead.
Puncheon	Log footbridge used in area of poor drainage.
Raised Trail Structure	Boardwalk, Turnpike, Puncheon.
SAMMS No	Asset Number

Station Boundary	Approved Acquisition Boundary files downloaded from FWS website in March 2007.
T Class	Trail Class: TC1-5 (see Trail Classification System for descriptions).
Tr Desig	Trail Designation: Standard (Std), National Historic Trail (NHT), National Recreation Trail (NRT), National Scenic Trail (NST).
Trail No	Trails are numbered based on Trail Class at the trailhead. TC 1 = T100 series, TC2 = T200 series, etc.
Turnpike	Trail tread elevated with dirt, rock or other aggregate from parallel side ditches and held in place by logs.



Trail Classification

Trail Attributes	Trail Class 1 Minimal/Undeveloped Trail	Trail Class 2 Simple/Minor Development Trail	Trail Class 3 Developed/Improved Trail	Trail Class 4 Highly Developed Trail	Trail Class 5 Fully Developed Trail
General Criteria Physical Characteristics to be Applied to All National Forest System Trails					
Tread & Traffic Flow	<ul style="list-style-type: none"> •Tread intermittent and often indistinct •May require route finding •Native materials only 	<ul style="list-style-type: none"> •Tread discernible and continuous, but narrow and rough •Few or no allowances constructed for passing •Native materials 	<ul style="list-style-type: none"> •Tread obvious and continuous •Width accommodates unhindered one-lane travel (occasional allowances constructed for passing) •Typically native materials 	<ul style="list-style-type: none"> •Tread wide and relatively smooth with few irregularities •Width may consistently accommodate two-lane travel •Native or imported materials •May be hardened 	<ul style="list-style-type: none"> •Width generally accommodates two-lane and two-directional travel, or provides frequent passing turnouts •Commonly hardened with asphalt or other imported material
Obstacles	<ul style="list-style-type: none"> •Obstacles common •Narrow passages; brush, steep grades, rocks and logs present 	<ul style="list-style-type: none"> •Obstacles occasionally present •Blockages cleared to define route and protect resources •Vegetation may encroach into trailway 	<ul style="list-style-type: none"> •Obstacles infrequent •Vegetation cleared outside of trailway 	<ul style="list-style-type: none"> •Few or no obstacles exist •Grades typically <12% •Vegetation cleared outside of trailway 	<ul style="list-style-type: none"> •No obstacles •Grades typically <8%
Constructed Features & Trail Elements	<ul style="list-style-type: none"> •Minimal to non-existent •Drainage is functional •No constructed bridges or foot crossings 	<ul style="list-style-type: none"> •Structures are of limited size, scale, and number •Drainage functional •Structures adequate to protect trail infrastructure and resources •Primitive foot crossings and fords 	<ul style="list-style-type: none"> •Trail structures (walls, steps, drainage, raised trail) may be common and substantial •Trail bridges as needed for resource protection and appropriate access •Generally native materials used in Wilderness 	<ul style="list-style-type: none"> •Structures frequent and substantial •Substantial trail bridges are appropriate at water crossings •Trailside amenities may be present 	<ul style="list-style-type: none"> •Structures frequent or continuous; may include curbs, handrails, trailside amenities, and boardwalks •Drainage structures frequent; may include culverts and road-like designs
Signs	<ul style="list-style-type: none"> •Minimum required •Generally limited to regulation and resource protection •No destination signs present 	<ul style="list-style-type: none"> •Minimum required for basic direction •Generally limited to regulation and resource protection •Typically very few or no destination signs present 	<ul style="list-style-type: none"> •Regulation, resource protection, user reassurance •Directional signs at junctions, or when confusion is likely •Destination signs typically present •Informational and interpretive signs may be present outside of Wilderness 	<ul style="list-style-type: none"> •Wide variety of signs likely present •Informational signs likely (outside of Wilderness) •Interpretive signs possible (outside of Wilderness) •Trail Universal Access information likely displayed at trailhead 	<ul style="list-style-type: none"> •Wide variety of signage is present •Information and interpretive signs likely •Trail Universal Access information is typically displayed at trailhead •
Typical Recreation Environments & Experience²	<ul style="list-style-type: none"> •Natural, unmodified •ROS: Often Primitive setting, but may occur in other ROS settings •WROS: Primitive 	<ul style="list-style-type: none"> •Natural, essentially unmodified •ROS: Typically Semi-Primitive setting •WROS: Primitive to Semi-Primitive 	<ul style="list-style-type: none"> •Natural, primarily unmodified •ROS: Typically Semi-Primitive to Rugged Natural setting •WROS: Semi-Primitive to Transition 	<ul style="list-style-type: none"> •May be modified •ROS: Typically Rugged Natural to Rural setting •WROS: Transition (rarely present in Wilderness) 	<ul style="list-style-type: none"> •Can be highly modified •ROS: Typically Rural to Urban setting •Commonly associated with Visitor Centers or high-use recreation sites •Not present in Wilderness

Note: Trail Class descriptions define "typical" attributes, and exceptions may occur for any attribute.