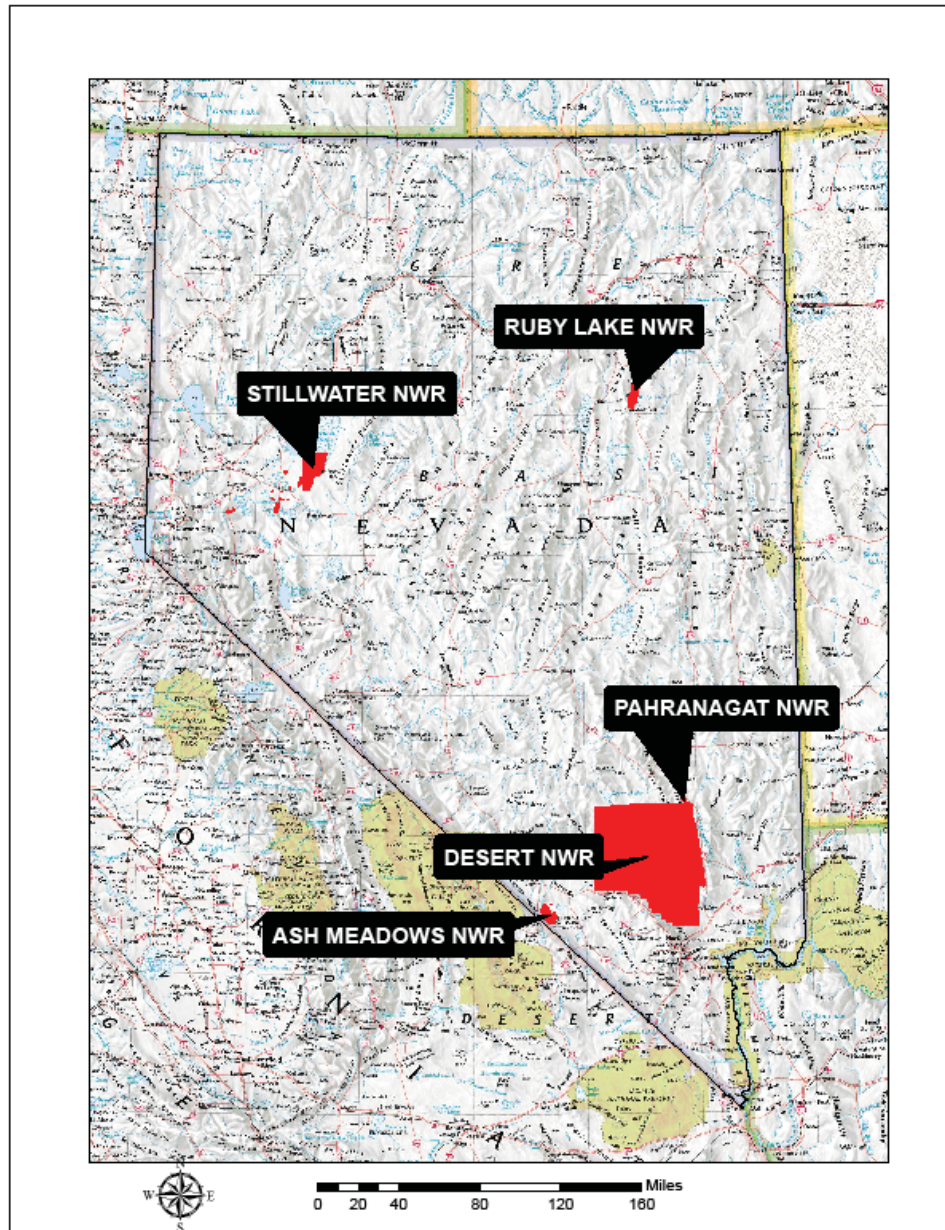


# The Trail Inventory of U.S. Fish and Wildlife Service Stations in Nevada



**Prepared By:**  
**Federal Highway Administration**  
**Central Federal Lands Highway Division**  
**January & June 2007**



# TABLE OF CONTENTS

<b><u>CHAPTER</u></b>		<b><u>PAGE</u></b>
<b>1.</b>	<b><u>NV STATE SUMMARY</u></b>	
	Table of Contents	1-1
	List of Stations	1-2
	Mileage by Trail Class, Condition, and Surface	1-3
<b>2-6.</b>	<b><u>REFUGE SUMMARIES</u></b>	
	Mileage by Trail Class, Condition, and Surface	X-1
	Trail Location Map	X-2
	Trail Identification	X-3
	Condition and Deficiency Sheets	X-4
	Photographic Sheets	X-5
<b>7.</b>	<b><u>APPENDIX</u></b>	
	Glossary of Terms and Abbreviations	7-1
	Trail Classification System	7-4

## FWS Stations in Nevada with Trails

Station Name	Trail Miles	Chapter
Ash Meadows NWR	0.70	2
Desert National Wildlife Range	0.42	3
Pahranagat NWR	1.83	4
Ruby Lake NWR	8.16	5
Stillwater NWR	0.16	6

# Nevada FWS Stations Trail Summaries

## Trail Miles and Percentages by Surface Type and Condition

Trail Surface Type	Mileage by Trail Condition												Total Miles
	Excellent		Good		Fair		Poor		Very Poor		Not Rated*		
	MILES	%	MILES	%	MILES	%	MILES	%	MILES	%	MILES	%	
Native	1.26	11%		0%		0%		0%		0%		0%	1.26
Gravel	0.13	1%		0%		0%		0%		0%		0%	0.13
Asphalt		0%		0%		0%		0%		0%		0%	0.00
Concrete		0%		0%		0%		0%		0%		0%	0.00
Turnpike		0%		0%		0%		0%		0%		0%	0.00
Boardwalk	0.43	4%		0%		0%		0%		0%		0%	0.43
Puncheon		0%		0%		0%		0%		0%		0%	0.00
Woodchips		0%		0%		0%		0%		0%		0%	0.00
Mowed		0%		0%		0%		0%		0%		0%	0.00
Admin Road		0%		0%		0%		0%		0%	9.45	84%	9.45
Other		0%		0%		0%		0%		0%		0%	0.00
Totals	1.82	16%	0.00	0%	0.00	0%	0.00	0%	0.00	0%	9.45	84%	11.27

## Trail Miles and Percentages by Trail Classification and Condition

Trail Classification	Mileage by Trail Condition												Total Miles
	Excellent		Good		Fair		Poor		Very Poor		Not Rated*		
	MILES	%	MILES	%	MILES	%	MILES	%	MILES	%	MILES	%	
TC1		0%		0%		0%		0%		0%		0%	0.00
TC2		0%		0%		0%		0%		0%		0%	0.00
TC3	1.26	11%		0%		0%		0%		0%	7.96	71%	9.22
TC4	0.16	1%		0%		0%		0%		0%	1.49	13%	1.65
TC5	0.40	4%		0%		0%		0%		0%		0%	0.40
Totals	1.82	16%	0.00	0%	0.00	0%	0.00	0%	0.00	0%	9.45	84%	11.27

\* Admin Roads are included in the inventory but are not rated for condition.



# **The Trail Inventory of Ash Meadows National Wildlife Refuge Amargosa Valley, Nevada**



**Prepared By:  
Federal Highway Administration  
Central Federal Lands Highway Division  
January 2007**



# Ash Meadows NWR

## Trail and Trail Feature Summaries

### Trail Miles and Percentages by Surface Type and Condition

Trail Surface Type	Mileage by Trail Condition												Total Miles
	Excellent		Good		Fair		Poor		Very Poor		Not Rated*		
	MILES	%	MILES	%	MILES	%	MILES	%	MILES	%	MILES	%	
Native	0.30	43%		0%		0%		0%		0%		0%	0.30
Gravel		0%		0%		0%		0%		0%		0%	0.00
Asphalt		0%		0%		0%		0%		0%		0%	0.00
Concrete		0%		0%		0%		0%		0%		0%	0.00
Turnpike		0%		0%		0%		0%		0%		0%	0.00
Boardwalk	0.40	57%		0%		0%		0%		0%		0%	0.40
Puncheon		0%		0%		0%		0%		0%		0%	0.00
Woodchips		0%		0%		0%		0%		0%		0%	0.00
Mowed		0%		0%		0%		0%		0%		0%	0.00
Admin Road		0%		0%		0%		0%		0%		0%	0.00
Other		0%		0%		0%		0%		0%		0%	0.00
Totals	0.70	100%	0.00	0%	0.00	0%	0.00	0%	0.00	0%	0.00	0%	0.70

### Trail Miles and Percentages by Trail Classification and Condition

Trail Classification	Mileage by Trail Condition												Total Miles
	Excellent		Good		Fair		Poor		Very Poor		Not Rated*		
	MILES	%	MILES	%	MILES	%	MILES	%	MILES	%	MILES	%	
TC1		0%		0%		0%		0%		0%		0%	0.00
TC2		0%		0%		0%		0%		0%		0%	0.00
TC3	0.30	43%		0%		0%		0%		0%		0%	0.30
TC4		0%		0%		0%		0%		0%		0%	0.00
TC5	0.40	57%		0%		0%		0%		0%		0%	0.40
Totals	0.70	100%	0.00	0%	0.00	0%	0.00	0%	0.00	0%	0.00	0%	0.70

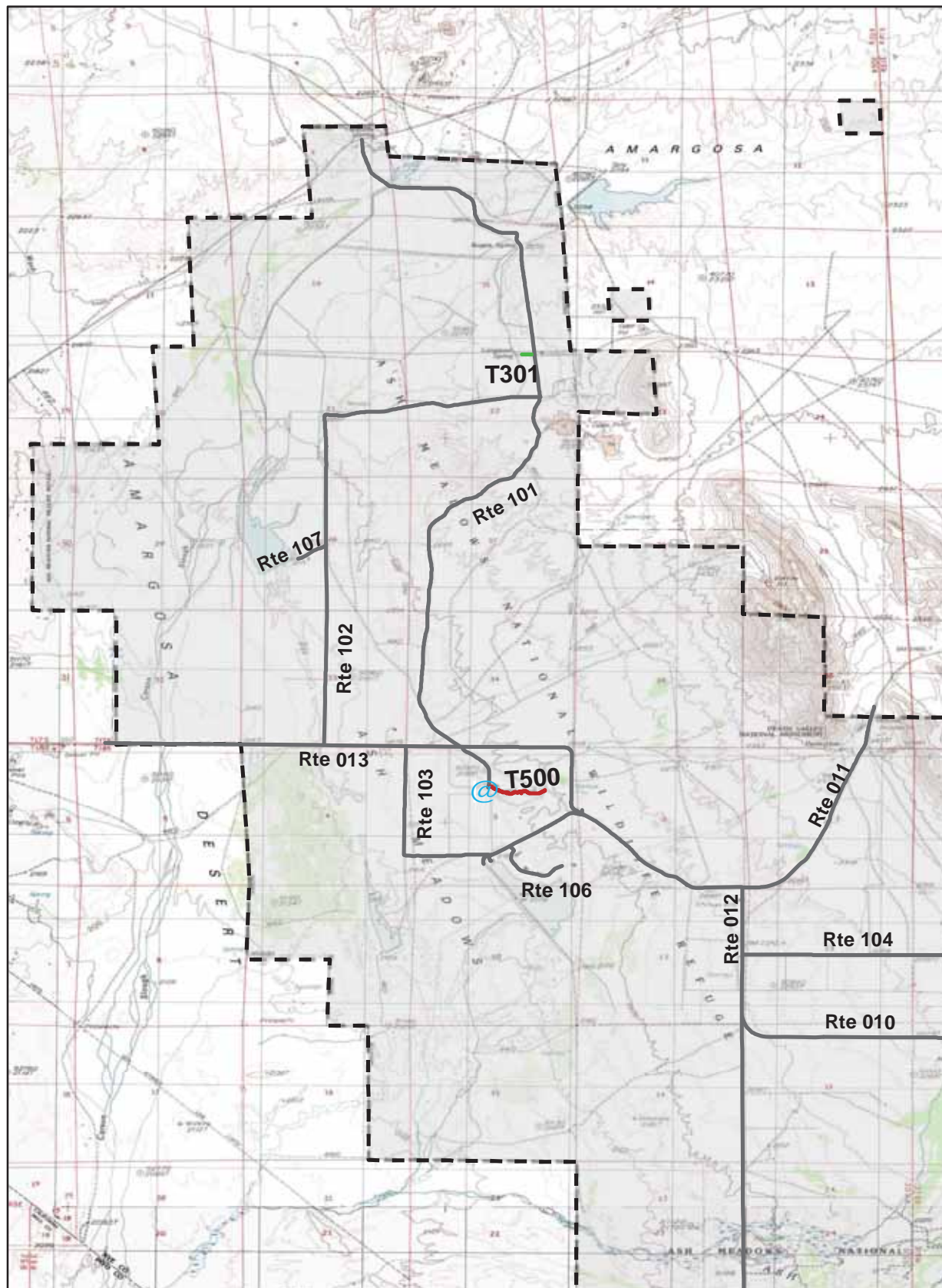
\* Admin Roads are included in the inventory but are not rated for condition.

## Trail Features

Trail Number	Feature Type	Quantity	Grouped Feature	Milepost	Photo
T300	Sign	1	No	0.00	1201
T301	Sign	2	No	0.00	2064
T301	Gate	1	No	0.00	N/A
T301	Sign	1	No	0.06	2066
T500	Sign	1	No	0.00	1168
T500	Sign	1	No	0.02	1169
T500	Sign	1	No	0.11	1190
T500	Bench	1	No	0.17	N/A
T500	Sign	1	No	0.22	1187
T500	Sign	1	No	0.23	1187
T500	Bench	1	No	0.23	N/A
T500	Lookout/Ob Deck	1	No	0.23	N/A
T500	Bench	1	No	0.24	N/A
T500	Sign	1	No	0.24	1171
T500	Sign	1	No	0.36	1182
T500	Bench	1	No	0.36	N/A
T500	Lookout/Ob Deck	1	No	0.36	N/A
T500	Bench	1	No	0.37	N/A
T500	Sign	1	No	0.37	1180
T500	Sign	2	Yes	N/A	N/A
sf-square feet					
lf-linear feet					
cf-cubic feet					



# ASH MEADOWS NATIONAL WILDLIFE REFUGE TRAIL LOCATION MAP



Station Boundary



HQ/VC





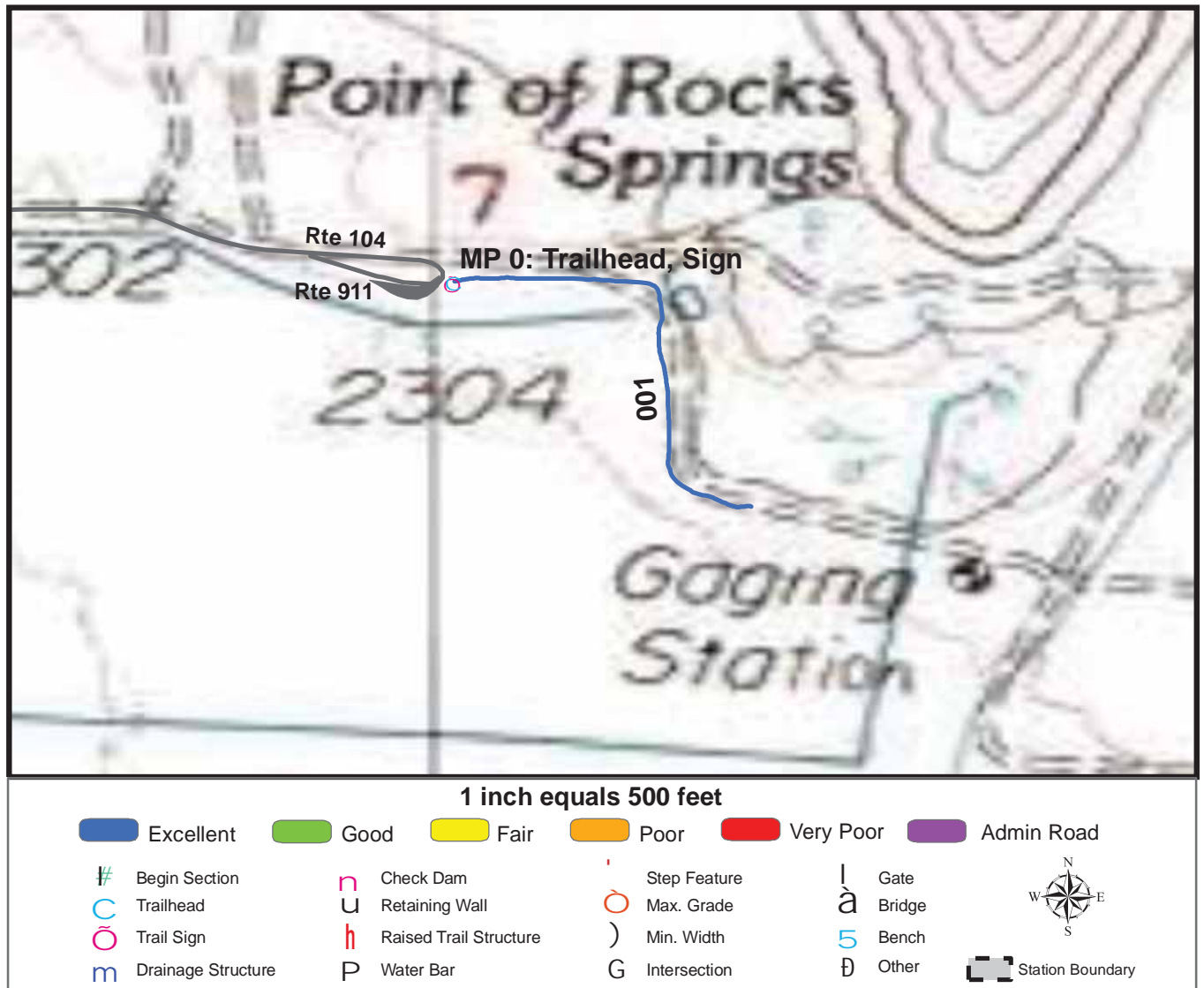
## TRAILS ID

**Station Name: Ash Meadows NWR**

**Org. Code: 84554**

Trail #	Trail Name	Surface Type	SAMMS	Trail Mileage	Trail Description (Begin and End point of trail)
T300	Point of Rocks Springs Trail	Native	N/A	0.24	From Point of Rocks Springs Parking (Rte 911) to end of trail
T301	Longstreet Spring Trail	Native	N/A	0.06	From Longstreet Spring Parking (Rte 903) to end of trail
T500	Crystal Springs Interpretive Trail	Boardwalk	10005178	0.4	From HQ/VC Parking (Rte 900) to end of trail at the Crystal Spring

# TRAIL CONDITION



**Trail Name:** Point of Rocks Springs Trail

**Refuge Name:** Ash Meadows NWR

**Trail Number:** T300

**Region:** 1

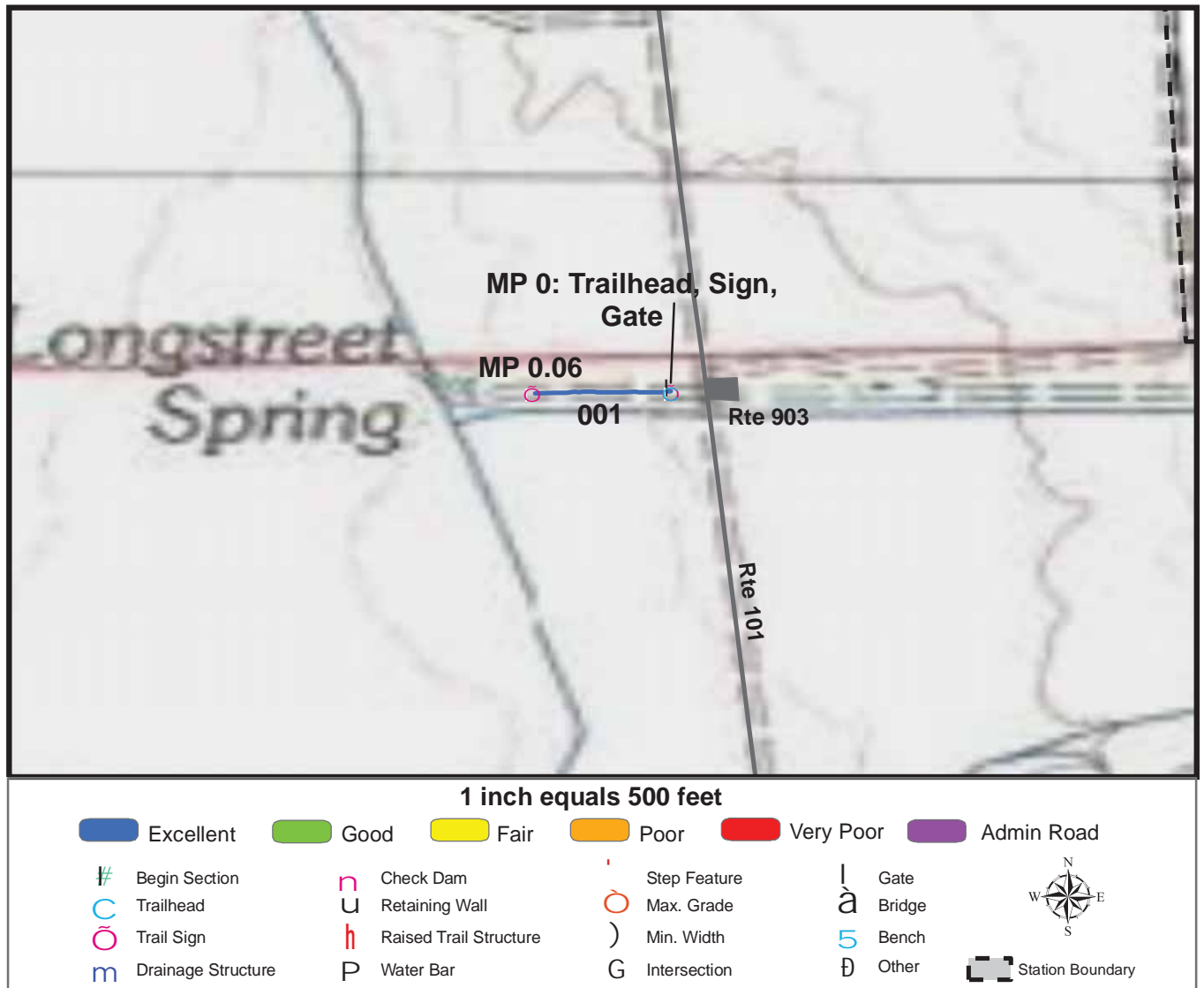
**TOTAL LENGTH:** 0.24 Miles

Section Number	001				
Section Length (miles)	0.24				
SAMMS Number	N/A				
Rating Date	1/19/2007				
<b>Trail Section Information</b>					
Trail Class	TC3				
Surface Type	Native				
Surface Firmness	Soft				
Width (inches)	72				
Average Grade (%)	3.3				
Average X-slope (%)	2.3				
<b>Trail Condition Information</b>					
Deferred Maintenance	\$0				
CRV	\$40576				
FCI	0				
Condition	Excellent				

## Trail Condition TOTALS

Deferred Maintenance	CRV	FCI	Condition
\$0	\$40576	0	Excellent

# TRAIL CONDITION



**Trail Name:** Longstreet Spring Trail

**Refuge Name:** Ash Meadows NWR

**Trail Number:** T301

**Region:** 1

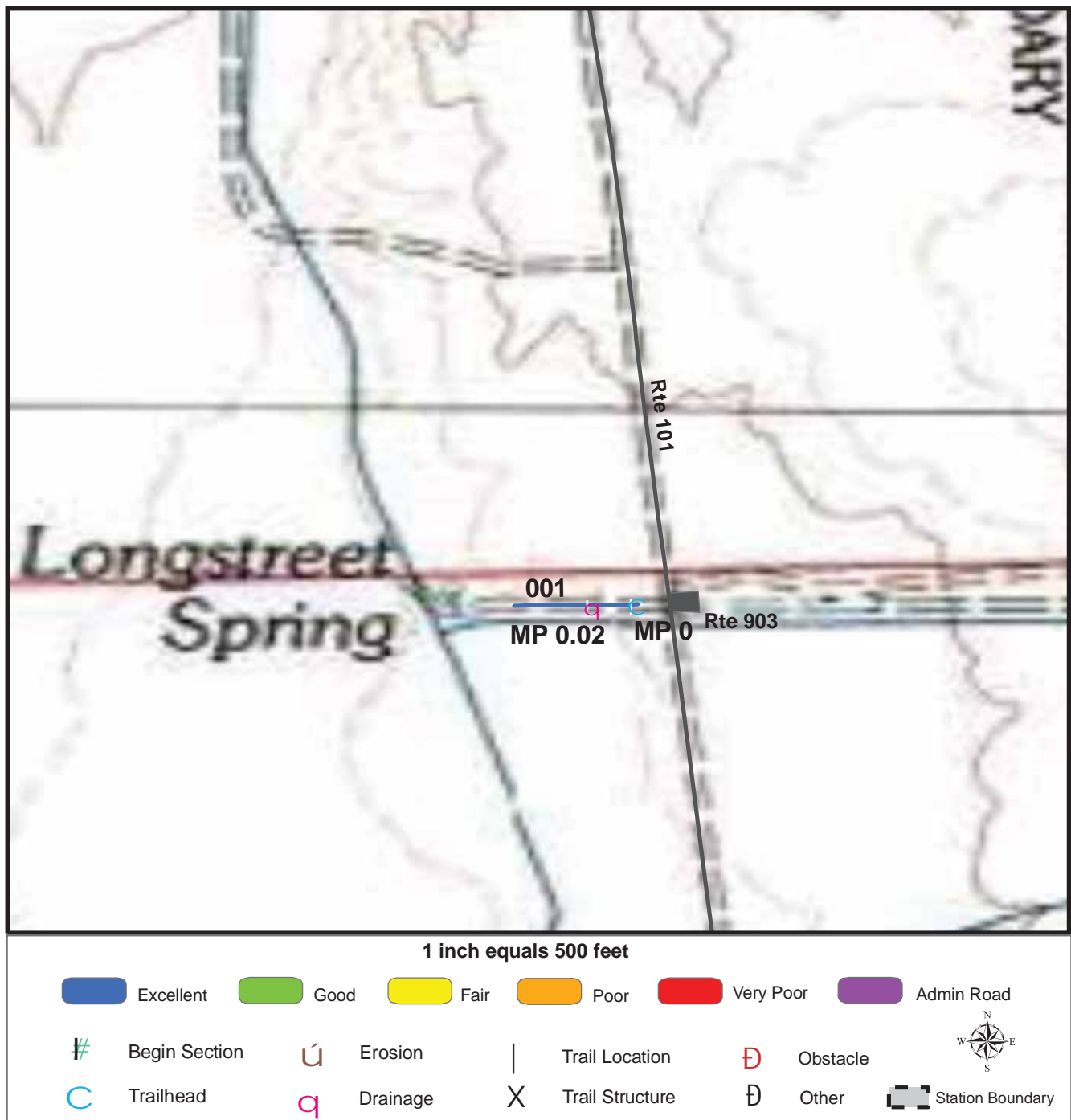
**TOTAL LENGTH:** 0.06 Miles

Section Number	001				
Section Length (miles)	0.06				
SAMMS Number	N/A				
Rating Date	1/19/2007				
<b>Trail Section Information</b>					
Trail Class	TC3				
Surface Type	Native				
Surface Firmness	Hard				
Width (inches)	120				
Average Grade (%)	3.2				
Average X-slope (%)	2.1				
<b>Trail Condition Information</b>					
Deferred Maintenance	\$188				
CRV	\$19237				
FCI	0.01				
Condition	Excellent				

## Trail Condition TOTALS

Deferred Maintenance	CRV	FCI	Condition
\$188	\$19237	0.01	Excellent

# TRAIL DEFICIENCY



**Trail Name:** Longstreet Spring Trail

**Refuge Name:** Ash Meadows NWR

**Trail Number:** T301

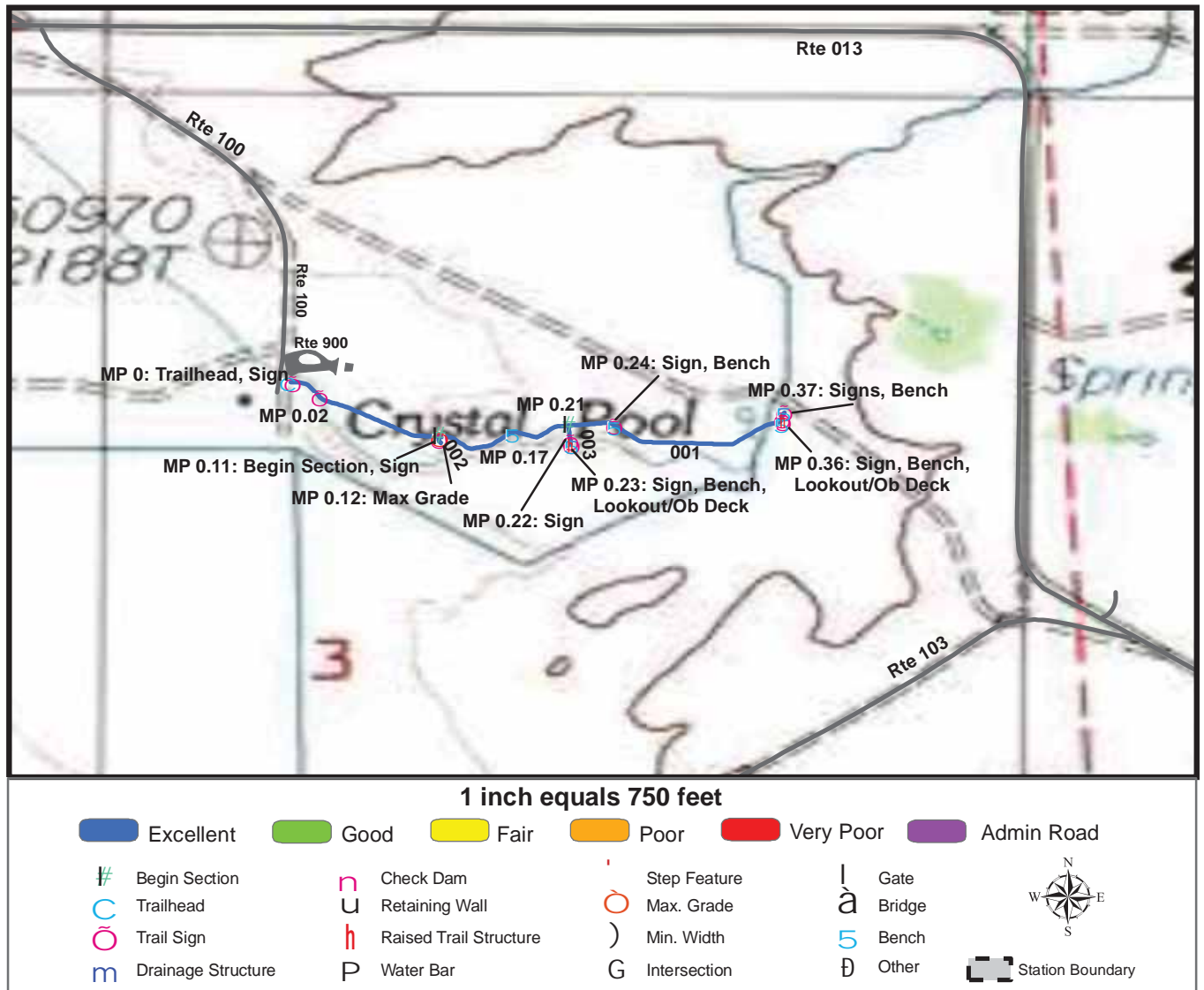
**Region:** 1

**TOTAL LENGTH:** 0.06 Miles

Mile Post	0.02			
Section Number	001			
Photo Number	2065			
Deficiency	Drainage			
Action	Repair			
Item	Tread -sf			
Quantity	50			
Deferred Maintenance	\$188			



# TRAIL CONDITION



**Trail Name:** Crystal Springs Interpretive Trail

**Refuge Name:** Ash Meadows NWR

**Trail Number:** T500

**Region:** 1

**TOTAL LENGTH:** 0.4 Miles

Section Number	001	002	003		
Section Length (miles)	0.37	0.01	0.02		
SAMMS Number	10005178	10005178	10005178		
Rating Date	1/19/2007	1/19/2007	1/19/2007		
<b>Trail Section Information</b>					
Trail Class	TC5	TC5	TC5		
Surface Type	Boardwalk	Boardwalk	Boardwalk		
Surface Firmness	Hard	Hard	Hard		
Width (inches)	66	66	66		
Average Grade (%)	0.6	0.6	0.6		
Average X-slope (%)	0.7	0.7	0.7		
<b>Trail Condition Information</b>					
Deferred Maintenance	\$0	\$0	\$0		
CRV	\$314094	\$7341	\$13671		
FCI	0	0	0		
Condition	Excellent	Excellent	Excellent		

## Trail Condition TOTALS

Deferred Maintenance	CRV	FCI	Condition
\$0	\$335106	0	Excellent

# PHOTOGRAPHIC SHEET

TRAIL NUMBER: **T300**

STATION: Ash Meadows NWR

DATE: 1/19/2007



Photo # 1201 - MP 0.0 - Trailhead, Sign

TRAIL NUMBER: **T301**

STATION: Ash Meadows NWR

DATE: 1/19/2007



Photo # 2063 - MP 0.0 - Trailhead



# PHOTOGRAPHIC SHEET

TRAIL NUMBER: **T301**

STATION: Ash Meadows NWR

DATE: 1/19/2007



Photo # 2064 - MP 0.0 - Sign

TRAIL NUMBER: **T301**

STATION: Ash Meadows NWR

DATE: 1/19/2007



Photo # 2065 - MP 0.02 - Drainage Deficiency

# PHOTOGRAPHIC SHEET

TRAIL NUMBER: **T301**

STATION: Ash Meadows NWR

DATE: 1/19/2007



Photo # 2066 - MP 0.06 - Sign

TRAIL NUMBER: **T500**

STATION: Ash Meadows NWR

DATE: 1/19/2007



Photo # 1167 - MP 0.0 - Trailhead



# PHOTOGRAPHIC SHEET

TRAIL NUMBER: **T500**

STATION: Ash Meadows NWR

DATE: 1/19/2007



Photo # 1168 - MP 0.0 - Sign

TRAIL NUMBER: **T500**

STATION: Ash Meadows NWR

DATE: 1/19/2007



Photo # 1169 - MP 0.02 - Sign

# PHOTOGRAPHIC SHEET

TRAIL NUMBER: **T500**

STATION: Ash Meadows NWR

DATE: 1/19/2007



Photo # 1189 - MP 0.11 - Begin Section 002

TRAIL NUMBER: **T500**

STATION: Ash Meadows NWR

DATE: 1/19/2007



Photo # 1190 - MP 0.11 - Sign



# PHOTOGRAPHIC SHEET

TRAIL NUMBER: **T500**

STATION: Ash Meadows NWR

DATE: 1/19/2007



Photo # 1185 - MP 0.21 - Begin Section 003

TRAIL NUMBER: **T500**

STATION: Ash Meadows NWR

DATE: 1/19/2007



Photo # 1187 - MP 0.22 - Sign

# PHOTOGRAPHIC SHEET

TRAIL NUMBER: **T500**

STATION: Ash Meadows NWR

DATE: 1/19/2007



Photo # 1171 - MP 0.24 - Sign

TRAIL NUMBER: **T500**

STATION: Ash Meadows NWR

DATE: 1/19/2007



Photo # 1182 - MP 0.36 - Sign



# PHOTOGRAPHIC SHEET

TRAIL NUMBER: **T500**

STATION: Ash Meadows NWR

DATE: 1/19/2007



Photo # 1180 - MP 0.37 - Sign

TRAIL NUMBER: **T500**

STATION: Ash Meadows NWR

DATE: 1/19/2007



Photo # 1181 - MP 0.37 - Sign (Grouped Feature)

# **The Trail Inventory of Desert National Wildlife Refuge Las Vegas, Nevada**



**Prepared By:  
Federal Highway Administration  
Central Federal Lands Highway Division  
January 2007**





# Desert NWR

## Trail and Trail Feature Summaries

### Trail Miles and Percentages by Surface Type and Condition

Trail Surface Type	Mileage by Trail Condition												Total Miles
	Excellent		Good		Fair		Poor		Very Poor		Not Rated*		
	MILES	%	MILES	%	MILES	%	MILES	%	MILES	%	MILES	%	
Native	0.42	100%		0%		0%		0%		0%		0%	0.42
Gravel		0%		0%		0%		0%		0%		0%	0.00
Asphalt		0%		0%		0%		0%		0%		0%	0.00
Concrete		0%		0%		0%		0%		0%		0%	0.00
Turnpike		0%		0%		0%		0%		0%		0%	0.00
Boardwalk		0%		0%		0%		0%		0%		0%	0.00
Puncheon		0%		0%		0%		0%		0%		0%	0.00
Woodchips		0%		0%		0%		0%		0%		0%	0.00
Mowed		0%		0%		0%		0%		0%		0%	0.00
Admin Road		0%		0%		0%		0%		0%		0%	0.00
Other		0%		0%		0%		0%		0%		0%	0.00
Totals	0.42	100%	0.00	0%	0.00	0%	0.00	0%	0.00	0%	0.00	0%	0.42

### Trail Miles and Percentages by Trail Classification and Condition

Trail Classification	Mileage by Trail Condition												Total Miles
	Excellent		Good		Fair		Poor		Very Poor		Not Rated*		
	MILES	%	MILES	%	MILES	%	MILES	%	MILES	%	MILES	%	
TC1		0%		0%		0%		0%		0%		0%	0.00
TC2		0%		0%		0%		0%		0%		0%	0.00
TC3	0.42	100%		0%		0%		0%		0%		0%	0.42
TC4		0%		0%		0%		0%		0%		0%	0.00
TC5		0%		0%		0%		0%		0%		0%	0.00
Totals	0.42	100%	0.00	0%	0.00	0%	0.00	0%	0.00	0%	0.00	0%	0.42

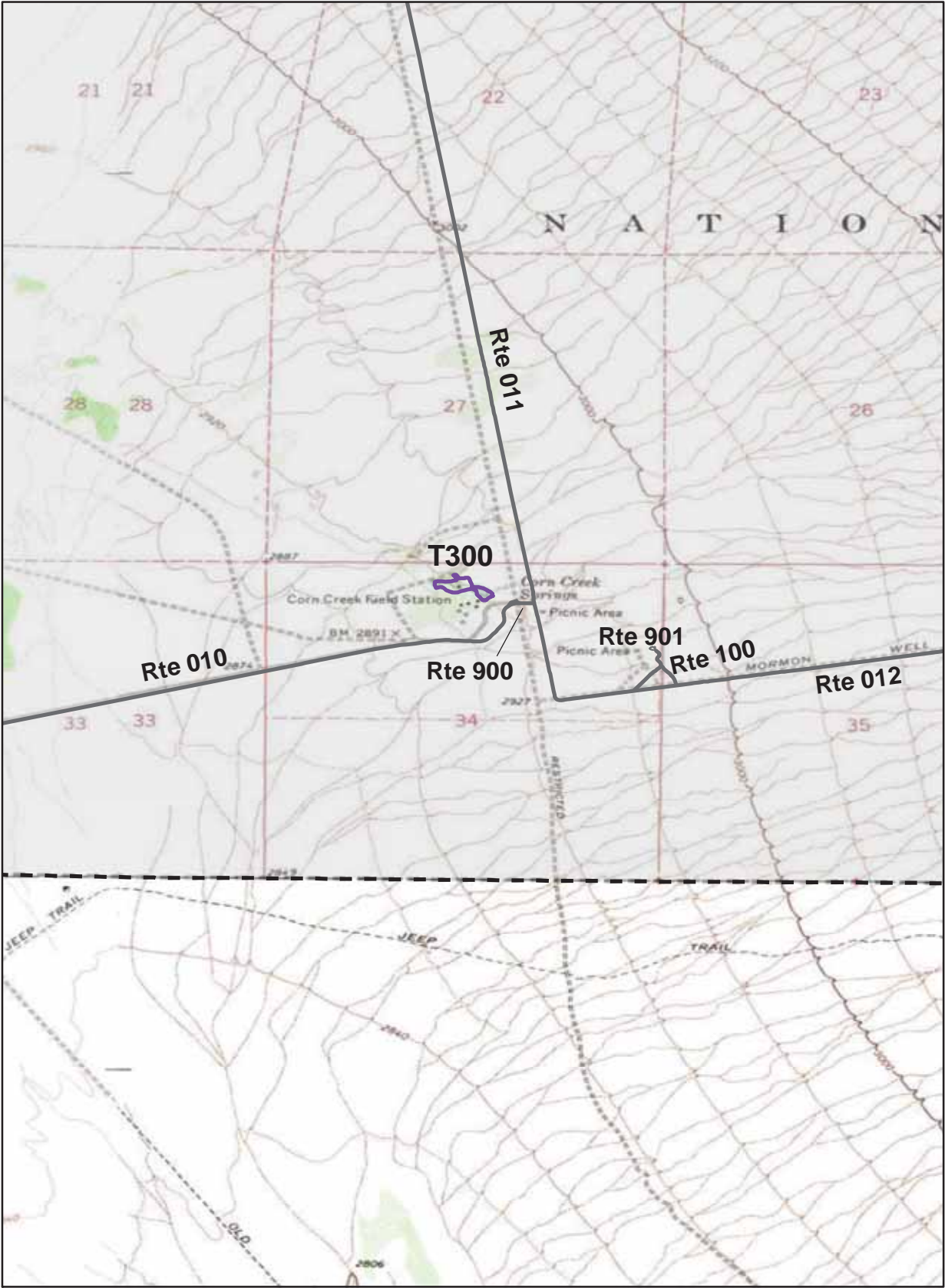
\* Admin Roads are included in the inventory but are not rated for condition.

## Trail Features

Trail Number	Feature Type	Quantity	Grouped Feature	Milepost	Photo
T300	Sign	2	No	0.00	1951
T300	Bridge -sf	10	No	0.00	1952
T300	Sign	1	No	0.01	1953
T300	Step: Rock -each	2	No	0.09	N/A
T300	Step: Rock -each	1	No	0.11	N/A
T300	Other	1	No	0.17	N/A
T300	Sign	2	No	0.17	1954
T300	Bench	1	No	0.20	N/A
T300	Bench	1	No	0.22	N/A
T300	Sign	1	No	0.33	1955
T300	Sign	1	No	0.40	1957
<b>sf-square feet</b> <b>lf-linear feet</b> <b>cf-cubic feet</b>					



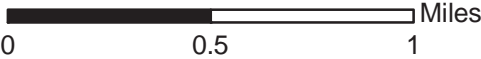
# DESERT NATIONAL WILDLIFE REFUGE TRAIL LOCATION MAP



Station Boundary



HQ/VC



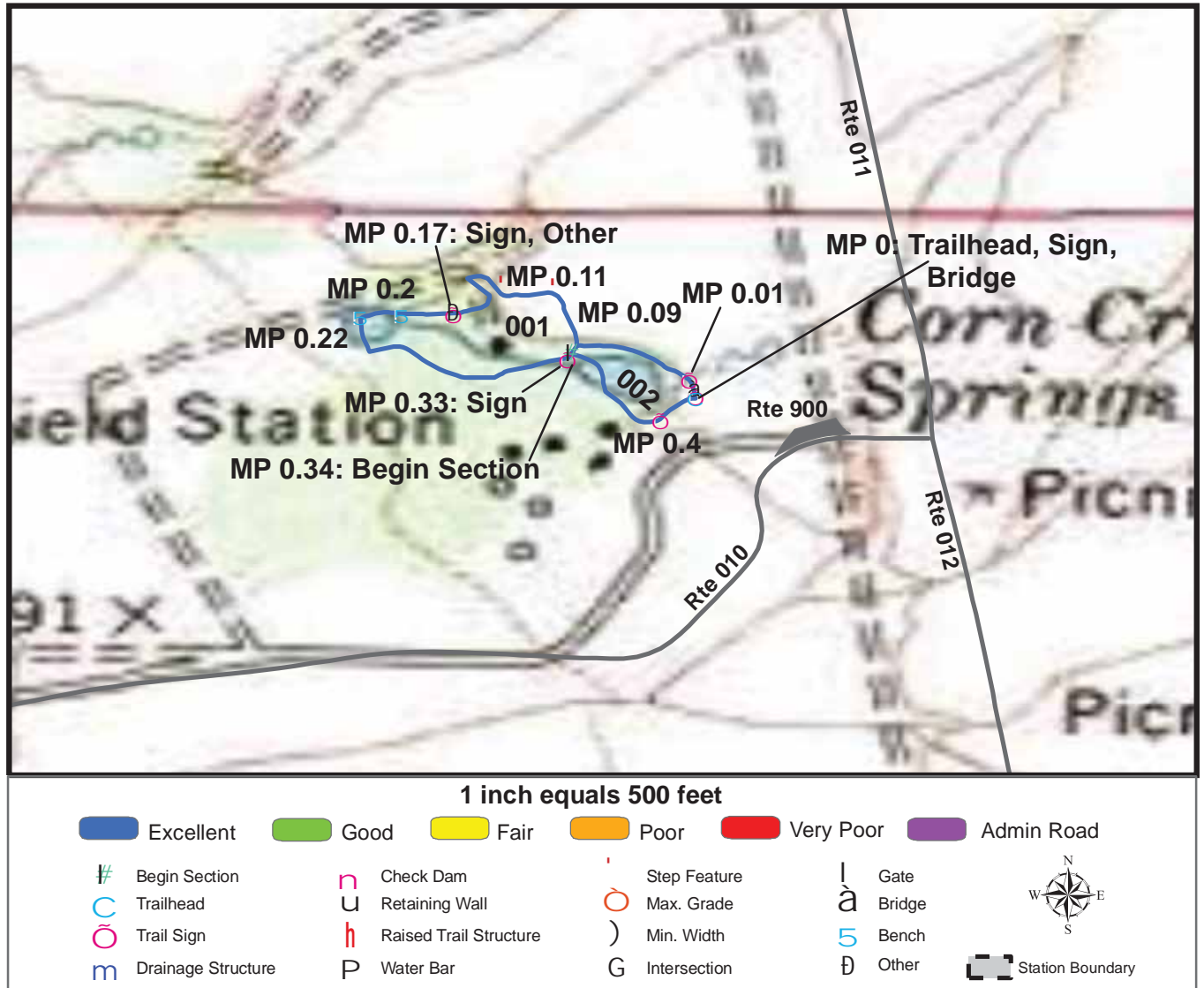
## TRAILS ID

**Station Name: Desert NWR**

**Org. Code: 84555**

Trail #	Trail Name	Surface Type	SAMMS	Trail Mileage	Trail Description (Begin and End point of trail)
T300	Interpretive Nature Trail	Native	10005304	0.42	From Visitor Center Parking (Rte 900) to end of trail loop

# TRAIL CONDITION



**Trail Name:** Interpretive Nature Trail

**Refuge Name:** Desert NWR

**Trail Number:** T300

**Region:** 1

**TOTAL LENGTH:** 0.42 Miles

Section Number	001	002			
Section Length (miles)	0.34	0.08			
SAMMS Number	10005304	10005304			
Rating Date	1/17/2007	1/17/2007			
<b>Trail Section Information</b>					
Trail Class	TC3	TC3			
Surface Type	Native	Native			
Surface Firmness	Hard	Hard			
Width (inches)	36	36			
Average Grade (%)	4.6	4.6			
Average X-slope (%)	3.8	3.8			
<b>Trail Condition Information</b>					
Deferred Maintenance	\$0	\$0			
CRV	\$28251	\$6400			
FCI	0	0			
Condition	Excellent	Excellent			

## Trail Condition TOTALS

Deferred Maintenance	CRV	FCI	Condition
\$0	\$34651	0	Excellent



# PHOTOGRAPHIC SHEET

TRAIL NUMBER: **T300**

STATION: Desert NWR

DATE: 1/17/2007



Photo # 1950 - MP 0.0 - Trailhead

TRAIL NUMBER: **T300**

STATION: Desert NWR

DATE: 1/17/2007



Photo # 1951 - MP 0.0 - Sign



# PHOTOGRAPHIC SHEET

TRAIL NUMBER: **T300**

STATION: Desert NWR

DATE: 1/17/2007



Photo # 1952 - MP 0.0 - Bridge

TRAIL NUMBER: **T300**

STATION: Desert NWR

DATE: 1/17/2007



Photo # 1953 - MP 0.01 - Sign



# PHOTOGRAPHIC SHEET

TRAIL NUMBER: **T300**

STATION: Desert NWR

DATE: 1/17/2007



Photo # 1954 - MP 0.17 - Sign

TRAIL NUMBER: **T300**

STATION: Desert NWR

DATE: 1/17/2007



Photo # 1955 - MP 0.33 - Sign

# PHOTOGRAPHIC SHEET

TRAIL NUMBER: **T300**

STATION: Desert NWR

DATE: 1/17/2007



Photo # 1956 - MP 0.34 - Begin Section 002

TRAIL NUMBER: **T300**

STATION: Desert NWR

DATE: 1/17/2007



Photo # 1957 - MP 0.4 - Sign



# **The Trail Inventory of Pahrnagat National Wildlife Refuge Alamo, Nevada**



**Prepared By:  
Federal Highway Administration  
Central Federal Lands Highway Division  
January 2007**





# Pahrnagat NWR

## Trail and Trail Feature Summaries

### Trail Miles and Percentages by Surface Type and Condition

Trail Surface Type	Mileage by Trail Condition												Total Miles
	Excellent		Good		Fair		Poor		Very Poor		Not Rated*		
	MILES	%	MILES	%	MILES	%	MILES	%	MILES	%	MILES	%	
Native	0.34	19%		0%		0%		0%		0%		0%	0.34
Gravel		0%		0%		0%		0%		0%		0%	0.00
Asphalt		0%		0%		0%		0%		0%		0%	0.00
Concrete		0%		0%		0%		0%		0%		0%	0.00
Turnpike		0%		0%		0%		0%		0%		0%	0.00
Boardwalk		0%		0%		0%		0%		0%		0%	0.00
Puncheon		0%		0%		0%		0%		0%		0%	0.00
Woodchips		0%		0%		0%		0%		0%		0%	0.00
Mowed		0%		0%		0%		0%		0%		0%	0.00
Admin Road		0%		0%		0%		0%		0%	1.49	81%	1.49
Other		0%		0%		0%		0%		0%		0%	0.00
Totals	0.34	19%	0.00	0%	0.00	0%	0.00	0%	0.00	0%	1.49	81%	1.83

### Trail Miles and Percentages by Trail Classification and Condition

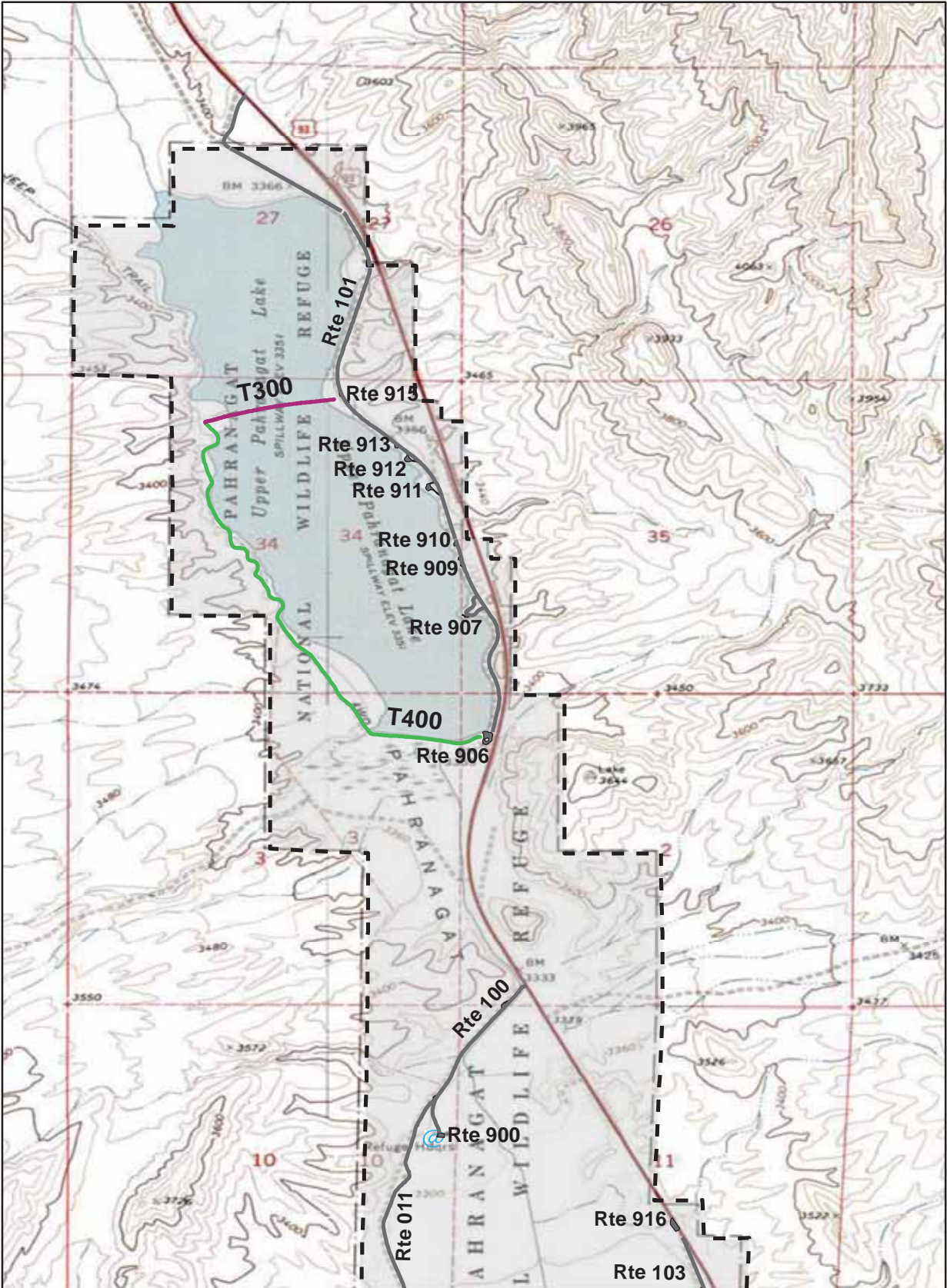
Trail Classification	Mileage by Trail Condition												Total Miles
	Excellent		Good		Fair		Poor		Very Poor		Not Rated*		
	MILES	%	MILES	%	MILES	%	MILES	%	MILES	%	MILES	%	
TC1		0%		0%		0%		0%		0%		0%	0.00
TC2		0%		0%		0%		0%		0%		0%	0.00
TC3	0.34	19%		0%		0%		0%		0%		0%	0.34
TC4		0%		0%		0%		0%		0%	1.49	81%	1.49
TC5		0%		0%		0%		0%		0%		0%	0.00
Totals	0.34	19%	0.00	0%	0.00	0%	0.00	0%	0.00	0%	1.49	81%	1.83

\* Admin Roads are included in the inventory but are not rated for condition.

## Trail Features

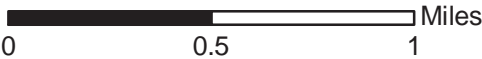
Trail Number	Feature Type	Quantity	Grouped Feature	Milepost	Photo
T300	Sign	2	No	0.00	1108
T300	Sign	2	No	0.00	1109
T300	Sign	1	No	0.04	1107
T400	Gate	1	No	0.00	N/A
T400	Sign	1	No	0.00	1100
T400	Bench	1	No	0.10	N/A
T400	Lookout/Ob Deck	1	No	0.12	N/A
T400	Sign	3	No	0.32	1102
T400	Bench	1	No	0.95	N/A
T400	Bench	1	No	1.03	N/A
T400	Bench	1	No	1.20	N/A
T400	Sign	3	No	1.49	1103
<div> <div>sf-square feet</div> <div>lf-linear feet</div> <div>cf-cubic feet</div> </div>					

# PAHRANAGAT NATIONAL WILDLIFE REFUGE TRAIL LOCATION MAP



 Station Boundary

@ HQ/VC



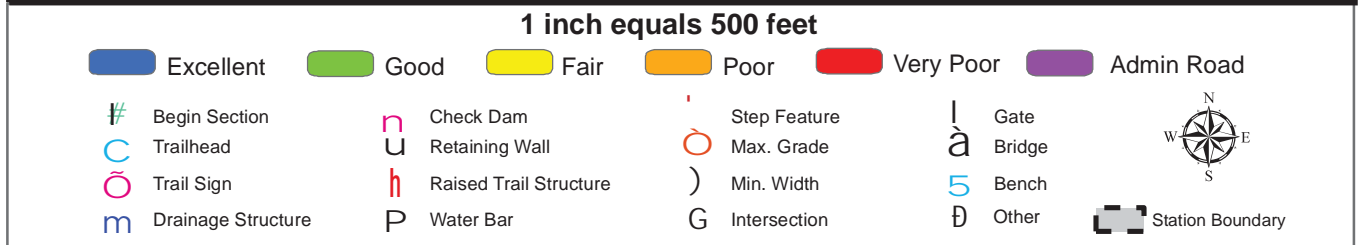
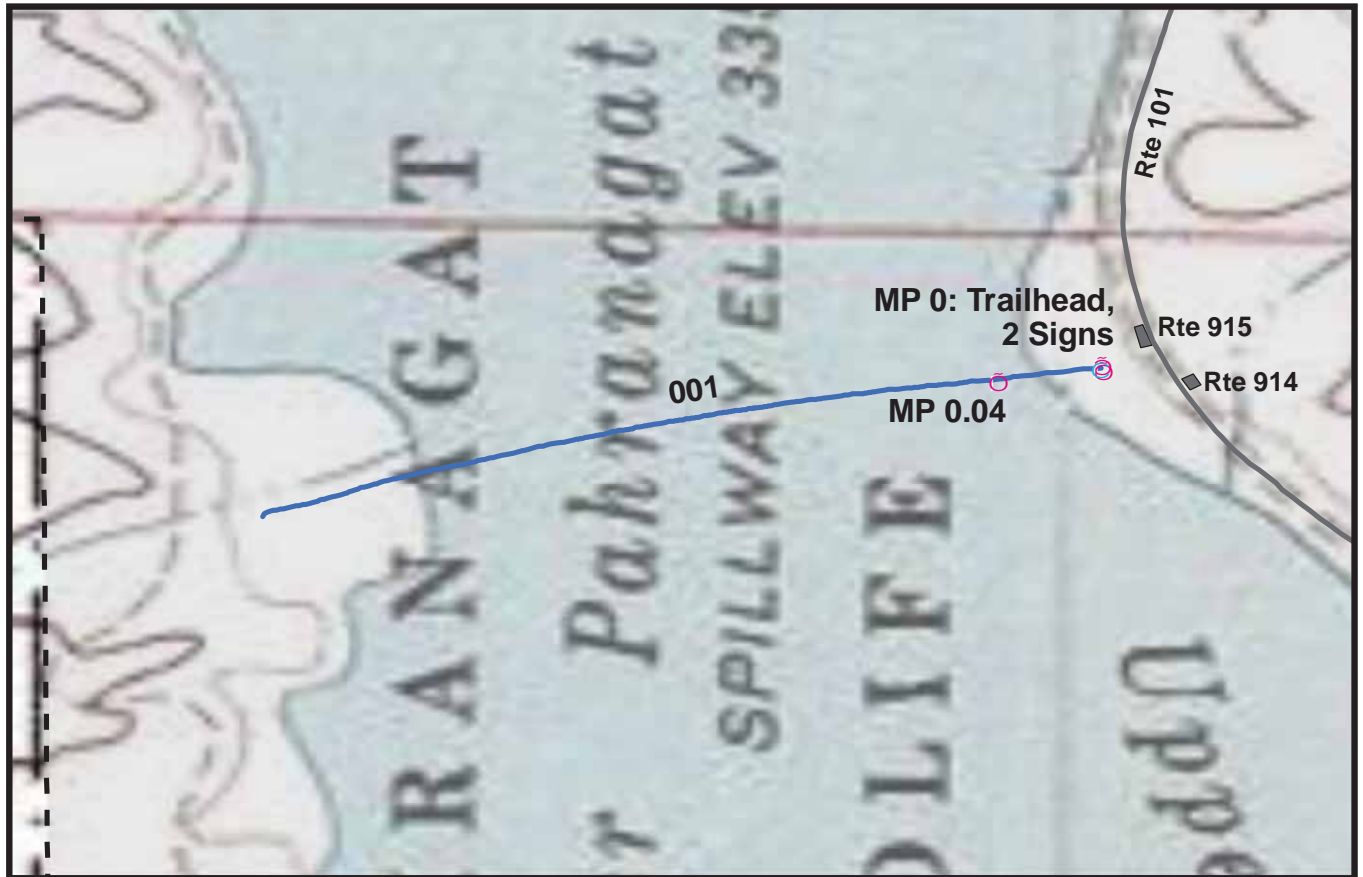


## TRAILS ID

**Station Name: Pahrnagat NWR**

**Org. Code: 14551**

Trail #	Trail Name	Surface Type	SAMMS	Trail Mileage	Trail Description (Begin and End point of trail)
T300	North Marsh Dike Trail	Native	10036941	0.34	From trailhead at parking lot (Rte 915) to the end of the Upper Lake Trail
T400	Upper Lake Trail	Admin Road	10036941	1.49	From Upper Lake Campground Parking (Rte 906) to the end of the North Dike Trail



**Trail Name:** North Marsh Dike Trail

**Refuge Name:** Pahranagat NWR

**Trail Number:** T300

**Region:** 1

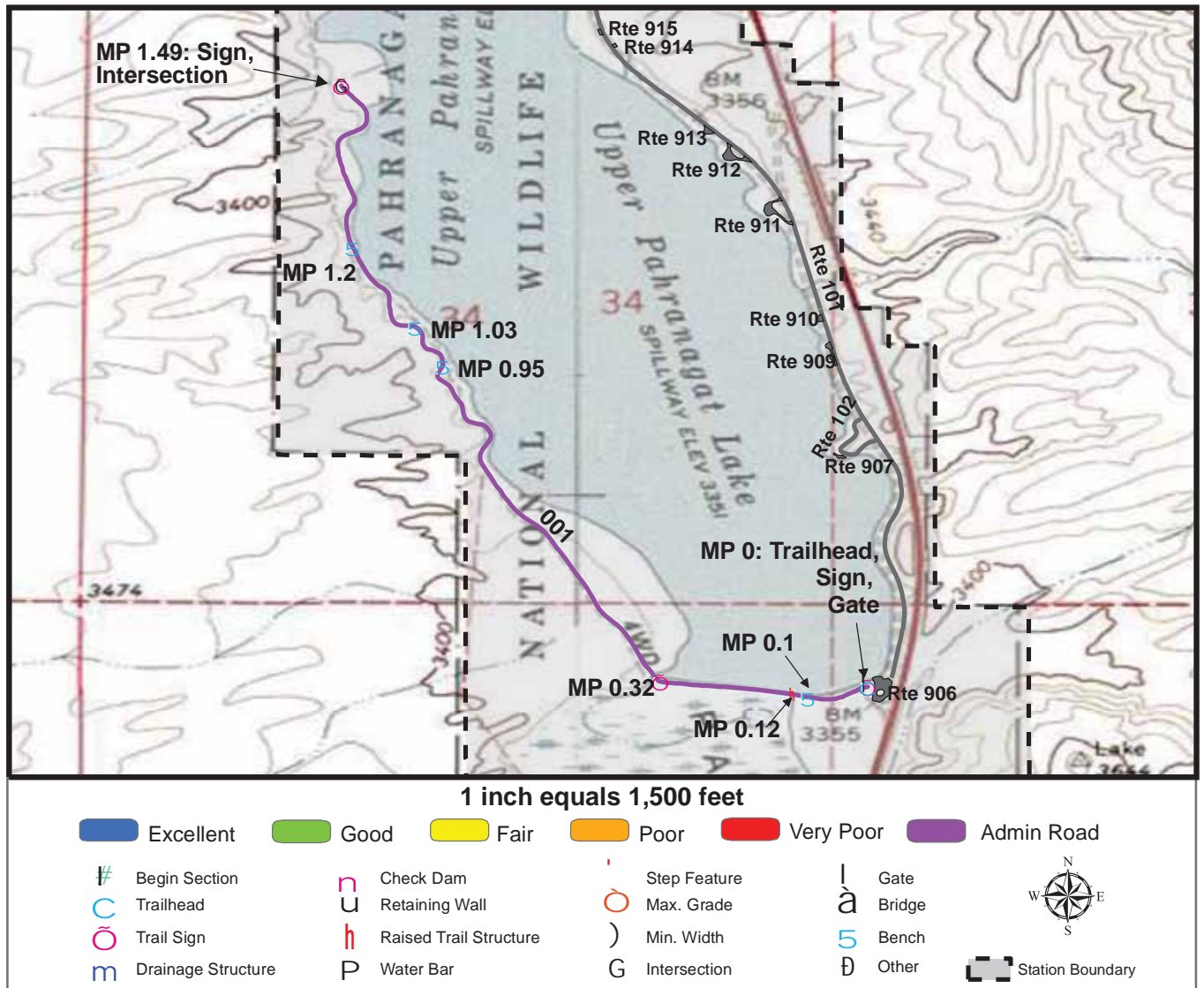
**TOTAL LENGTH:** 0.34 Miles

Section Number	001				
Section Length (miles)	0.34				
SAMMS Number	10036941				
Rating Date	1/16/2007				
<b>Trail Section Information</b>					
Trail Class	TC3				
Surface Type	Gravel				
Surface Firmness	Firm				
Width (inches)	80				
Average Grade (%)	3.7				
Average X-slope (%)	2.5				
<b>Trail Condition Information</b>					
Deferred Maintenance	\$0				
CRV	\$59350				
FCI	0				
Condition	Excellent				

**Trail Condition TOTALS**

Deferred Maintenance	CRV	FCI	Condition
\$0	\$59350	0	Excellent

# TRAIL CONDITION



**Trail Name:** Upper Lake Trail

**Refuge Name:** Pahranagat NWR

**Trail Number:** T400

**Region:** 2

**TOTAL LENGTH:** 1.49 Miles

Section Number	001				
Section Length (miles)	1.49				
SAMMS Number	10036941				
Rating Date	1/16/2007				
<b>Trail Section Information</b>					
Trail Class	TC4				
Surface Type	Admin Road				
Surface Firmness	Firm				
Width (inches)	70				
Average Grade (%)	0				
Average X-slope (%)	0				
<b>Trail Condition Information</b>					
Deferred Maintenance	\$0				
CRV	\$0				
FCI	0				
Condition	Not Rated				

## Trail Condition TOTALS

Deferred Maintenance	CRV	FCI	Condition
\$0	\$0	0	Not Rated



# PHOTOGRAPHIC SHEET

TRAIL NUMBER: **T300**

STATION: Pahrnagat NWR

DATE: 1/16/2007



Photo # 1110 - MP 0.0 - Trailhead

TRAIL NUMBER: **T300**

STATION: Pahrnagat NWR

DATE: 1/16/2007



Photo # 1108 - MP 0.0 - Sign



# PHOTOGRAPHIC SHEET

TRAIL NUMBER: **T300**

STATION: Pahrnagat NWR

DATE: 1/16/2007



Photo # 1109 - MP 0.0 - Sign

TRAIL NUMBER: **T300**

STATION: Pahrnagat NWR

DATE: 1/16/2007



Photo # 1107 - MP 0.04 - Sign



# PHOTOGRAPHIC SHEET

TRAIL NUMBER: **T400**

STATION: Pahrnagat NWR

DATE: 1/16/2007



Photo # 1100 - MP 0.0 - Trailhead, Sign

TRAIL NUMBER: **T400**

STATION: Pahrnagat NWR

DATE: 1/16/2007



Photo # 1102 - MP 0.32 - Sign



# PHOTOGRAPHIC SHEET

TRAIL NUMBER: **T400**

STATION: Pahrnagat NWR

DATE: 1/16/2007



Photo # 1103 - MP 1.49 - Sign

# **The Trail Inventory of Ruby Lake National Wildlife Refuge Ruby Valley, NV**



**Prepared By:  
Federal Highway Administration  
Central Federal Lands Highway Division  
June 2007**



# Ruby Lake NWR

## Trail and Trail Feature Summaries

### Trail Miles and Percentages by Surface Type and Condition

Trail Surface Type	Mileage by Trail Condition												Total Miles
	Excellent		Good		Fair		Poor		Very Poor		Not Rated*		
	MILES	%	MILES	%	MILES	%	MILES	%	MILES	%	MILES	%	
Native	0.20	2%		0%		0%		0%		0%		0%	0.20
Gravel		0%		0%		0%		0%		0%		0%	0.00
Asphalt		0%		0%		0%		0%		0%		0%	0.00
Concrete		0%		0%		0%		0%		0%		0%	0.00
Turnpike		0%		0%		0%		0%		0%		0%	0.00
Boardwalk		0%		0%		0%		0%		0%		0%	0.00
Puncheon		0%		0%		0%		0%		0%		0%	0.00
Woodchips		0%		0%		0%		0%		0%		0%	0.00
Mowed		0%		0%		0%		0%		0%		0%	0.00
Admin Road		0%		0%		0%		0%		0%	7.96	98%	7.96
Other		0%		0%		0%		0%		0%		0%	0.00
Totals	0.20	2%	0.00	0%	0.00	0%	0.00	0%	0.00	0%	7.96	98%	8.16

### Trail Miles and Percentages by Trail Classification and Condition

Trail Classification	Mileage by Trail Condition												Total Miles
	Excellent		Good		Fair		Poor		Very Poor		Not Rated*		
	MILES	%	MILES	%	MILES	%	MILES	%	MILES	%	MILES	%	
TC1		0%		0%		0%		0%		0%		0%	0.00
TC2		0%		0%		0%		0%		0%		0%	0.00
TC3	0.20	2%		0%		0%		0%		0%	7.96	98%	8.16
TC4		0%		0%		0%		0%		0%		0%	0.00
TC5		0%		0%		0%		0%		0%		0%	0.00
Totals	0.20	2%	0.00	0%	0.00	0%	0.00	0%	0.00	0%	7.96	98%	8.16

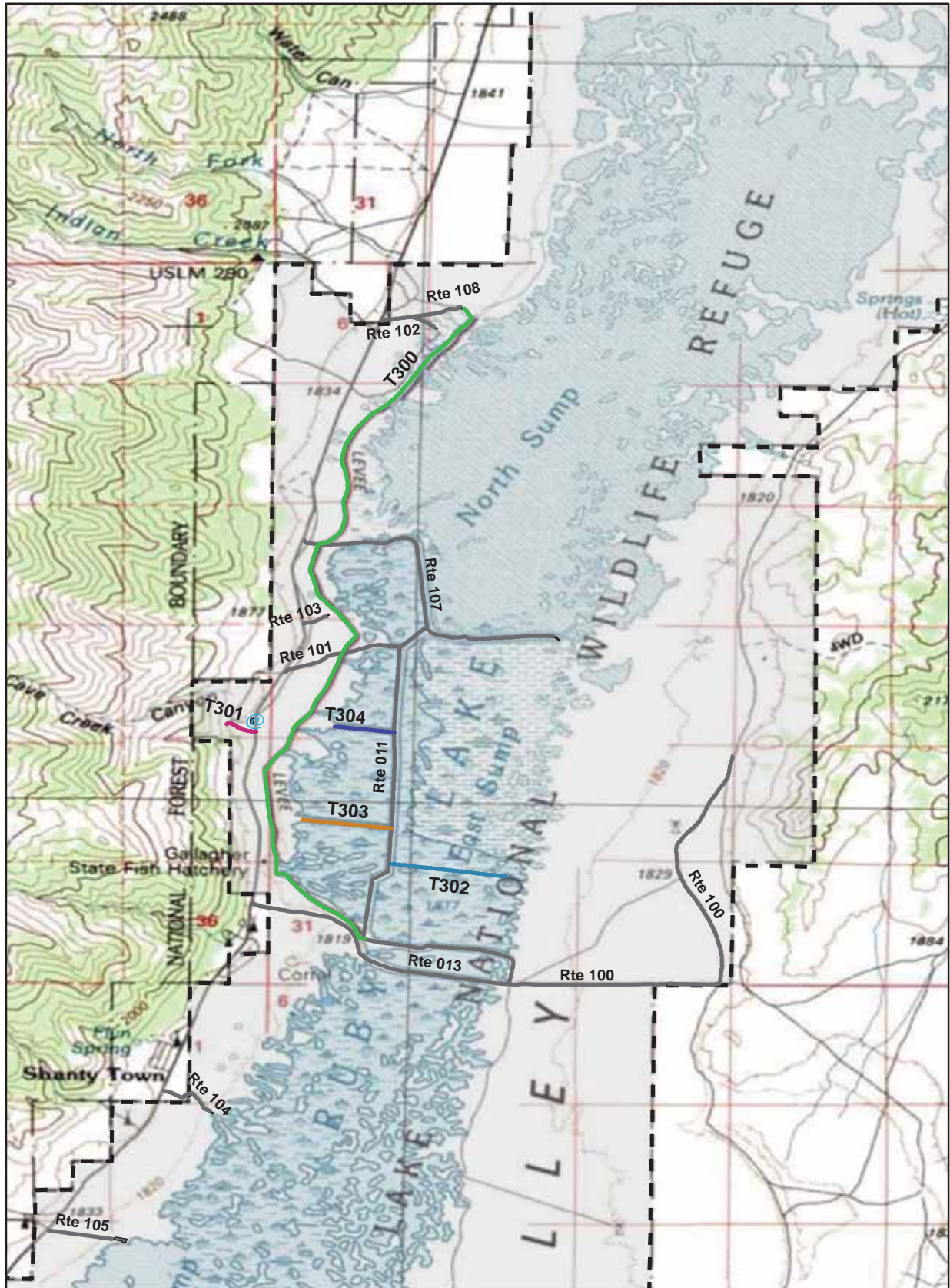
\* Admin Roads are included in the inventory but are not rated for condition.



## Trail Features

Trail Number	Feature Type	Quantity	Grouped Feature	Milepost	Photo
T300	Sign	3	Yes	0.00	3
T300	Gate	1	No	2.38	N/A
T300	Water Control Struc	1	No	2.40	N/A
T300	Gate	1	No	2.40	N/A
T300	Gate	1	No	3.40	N/A
T300	Gate	1	No	3.47	N/A
T300	Water Control Struc	1	No	4.50	N/A
T300	Water Control Struc	1	No	5.05	N/A
T301	Sign	3	No	0.00	5
T301	Crib: Log -cf	140	No	0.15	N/A
T302	Sign	1	No	0.00	11
T302	Gate	1	No	0.00	N/A
T302	Water Control Struc	1	No	0.01	N/A
T303	Gate	1	No	0.01	N/A
T303	Sign	1	No	0.01	13
T303	Water Control Struc	1	No	0.01	N/A
T304	Water Control Struc	1	No	0.00	N/A
T304	Sign	1	No	0.00	15
T304	Gate	1	No	0.01	N/A
<b>sf-square feet</b> <b>lf-linear feet</b> <b>cf-cubic feet</b>					

# RUBY LAKE NATIONAL WILDLIFE REFUGE TRAIL LOCATION MAP



Station Boundary



HQ/VC

0 1 2 Miles

## TRAILS ID

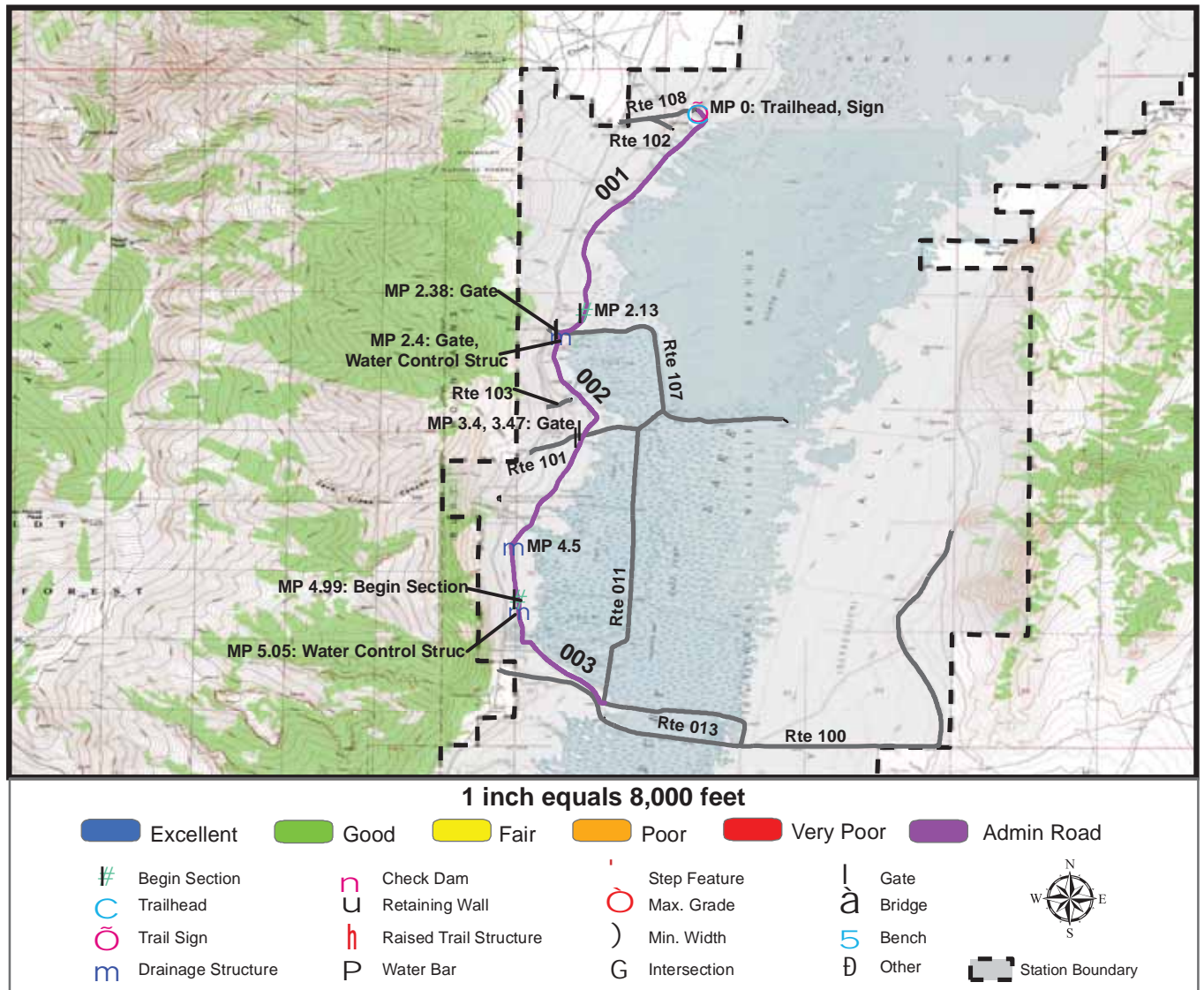
**Station Name: Ruby Lake NWR**

**Org. Code: 84570**

Trail #	Trail Name	Surface Type(s)	SAMMS	Trail Mileage	Trail Description (Begin and End point of trail)
T300	Collection Ditch Trail	Admin Road	10057351	6.22	From North Collection Ditch Access Parking (Rte 913) to Brown Dike Road (Rte 013).
T301	Cave Creek Trail	Admin Road, Native	10057349	0.23	From County Road 788 to end of trail.
T302	East Marsh Trail	Admin Road	10057395	0.74	From Long Dike Road (Rte 011) to end of trail at closed area.
T303	South West Marsh Trail	Admin Road	N/A	0.58	From Long Dike Road (Rte 011) to end of trail at closed area.
T304	North West Marsh Trail	Admin Road	N/A	0.39	From Long Dike Road (Rte 011) to end of trail at closed area.



# TRAIL CONDITION



**Trail Name:** Collection Ditch Trail

**Refuge Name:** Ruby Lake NWR

**Trail Number:** T300

**Region:** 8

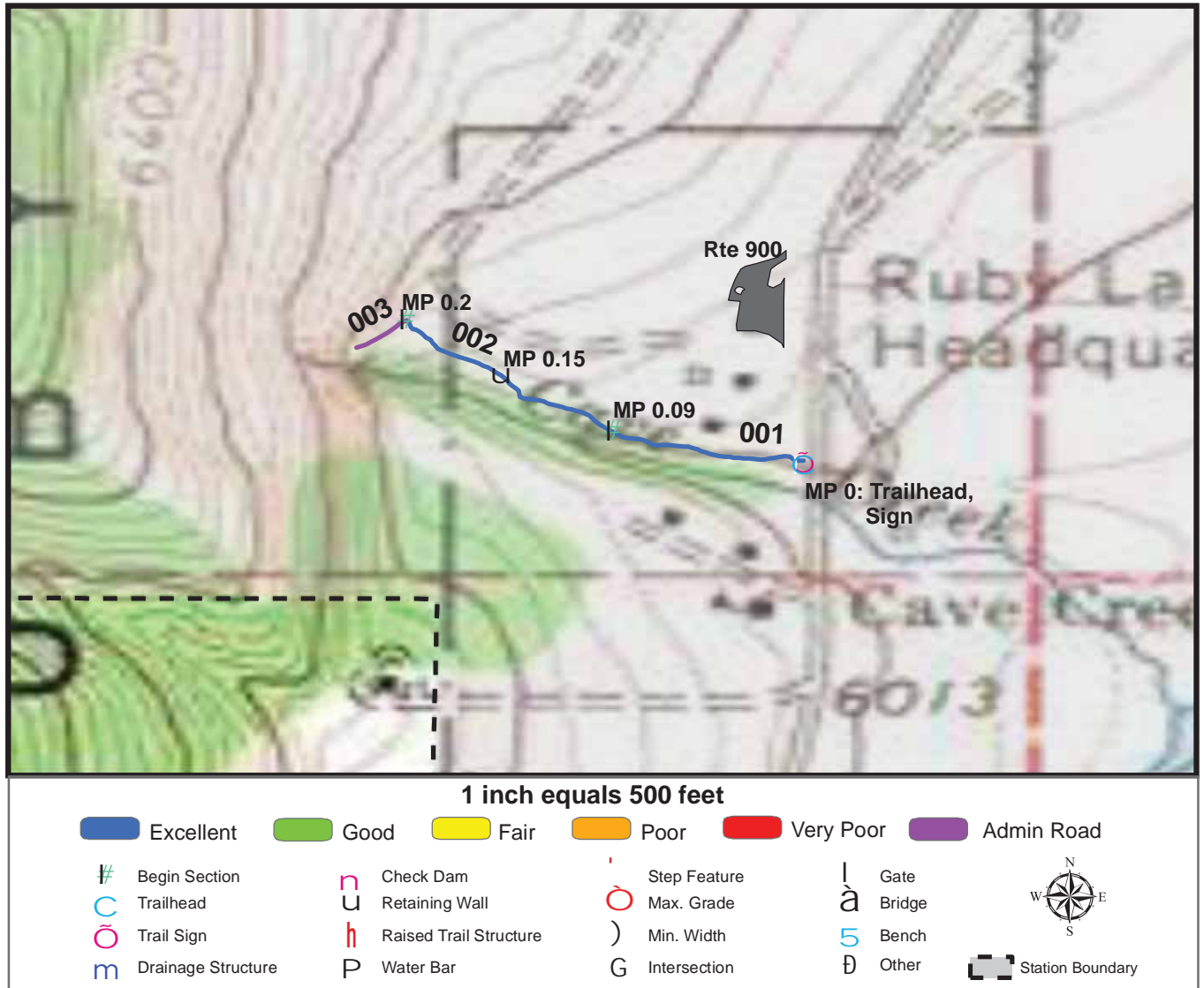
**TOTAL LENGTH:** 6.22 Miles

Section Number	001	002	003		
Section Length (miles)	2.13	2.9	1.19		
SAMMS Number	10057351	10057351	10057351		
Rating Date	6/13/2007	6/13/2007	6/13/2007		
<b>Trail Section Information</b>					
Trail Class	TC3	TC3	TC3		
Surface Type	Admin Road	Admin Road	Admin Road		
Surface Firmness	Firm	Firm	Firm		
Width (inches)	84	84	84		
Average Grade (%)	2.2	2.2	2.2		
Average X-slope (%)	2.2	2.2	2.2		
<b>Trail Condition Information</b>					
Deferred Maintenance	\$0	\$0	\$0		
CRV	\$0	\$0	\$0		
FCI	0	0	0		
Condition	Not Rated	Not Rated	Not Rated		

## Trail Condition TOTALS

Deferred Maintenance	CRV	FCI	Condition
\$0	\$0	0	Not Rated

# TRAIL CONDITION



**Trail Name:** Cave Creek Trail

**Refuge Name:** Ruby Lake NWR

**Trail Number:** T301

**Region:** 8

**TOTAL LENGTH:** 0.23 Miles

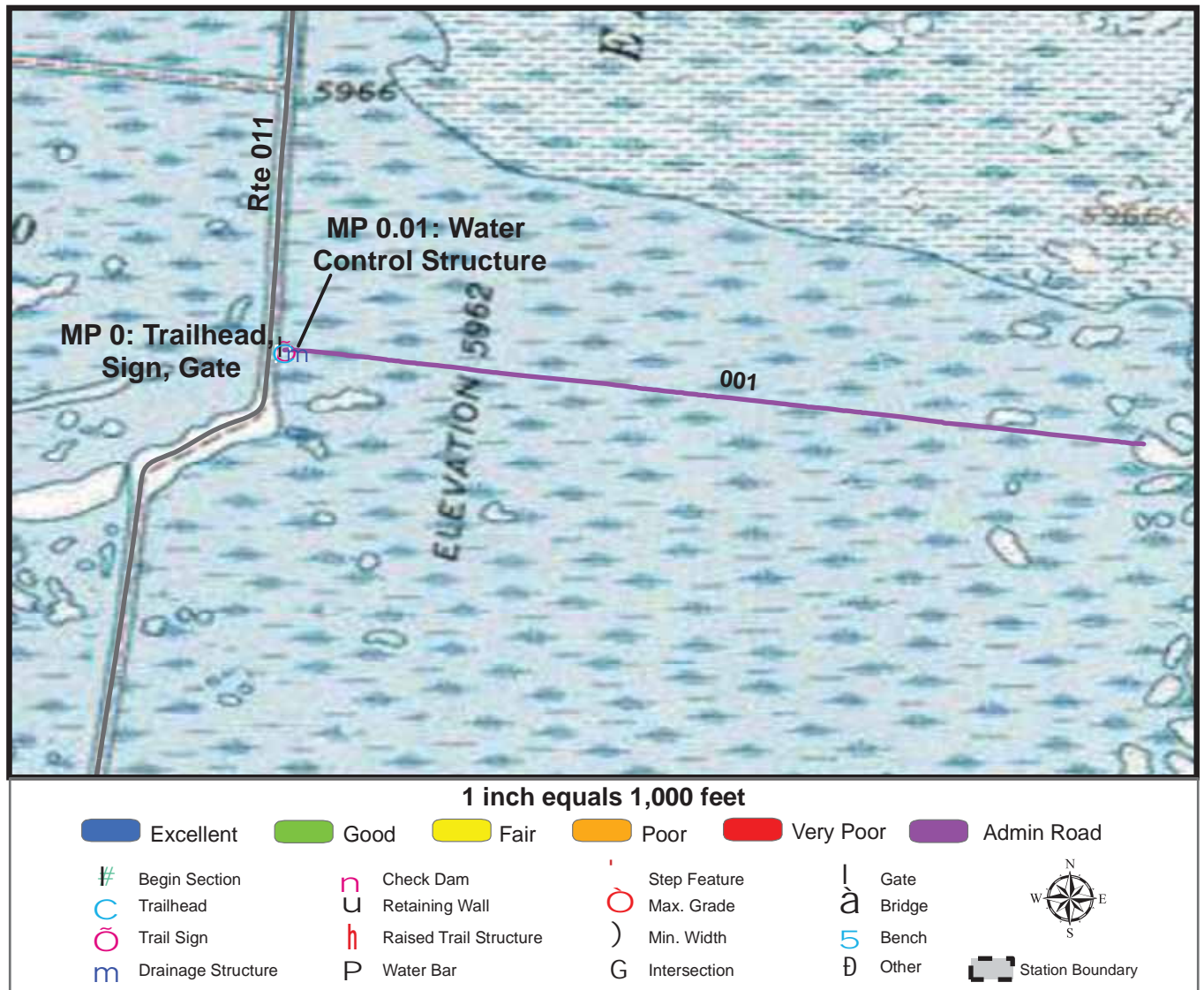
Section Number	001	002	003		
Section Length (miles)	0.09	0.11	0.03		
SAMMS Number	10057349	10057349	10057349		
Rating Date	6/13/2007	6/13/2007	6/13/2007		
<b>Trail Section Information</b>					
Trail Class	TC3	TC3	TC3		
Surface Type	Native	Native	Admin Road		
Surface Firmness	Soft	Soft	Soft		
Width (inches)	96	24	24		
Average Grade (%)	5.6	5.6	5.6		
Average X-slope (%)	5.4	5.4	5.4		
<b>Trail Condition Information</b>					
Deferred Maintenance	\$0	\$0	\$0		
CRV	\$16308	\$9034	\$0		
FCI	0	0	0		
Condition	Excellent	Excellent	Not Rated		

## Trail Condition TOTALS

Deferred Maintenance	CRV	FCI	Condition
\$0	\$25342	0	Excellent



# TRAIL CONDITION



**Trail Name:** East Marsh Trail

**Refuge Name:** Ruby Lake NWR

**Trail Number:** T302

**Region:** 8

**TOTAL LENGTH:** 0.74 Miles

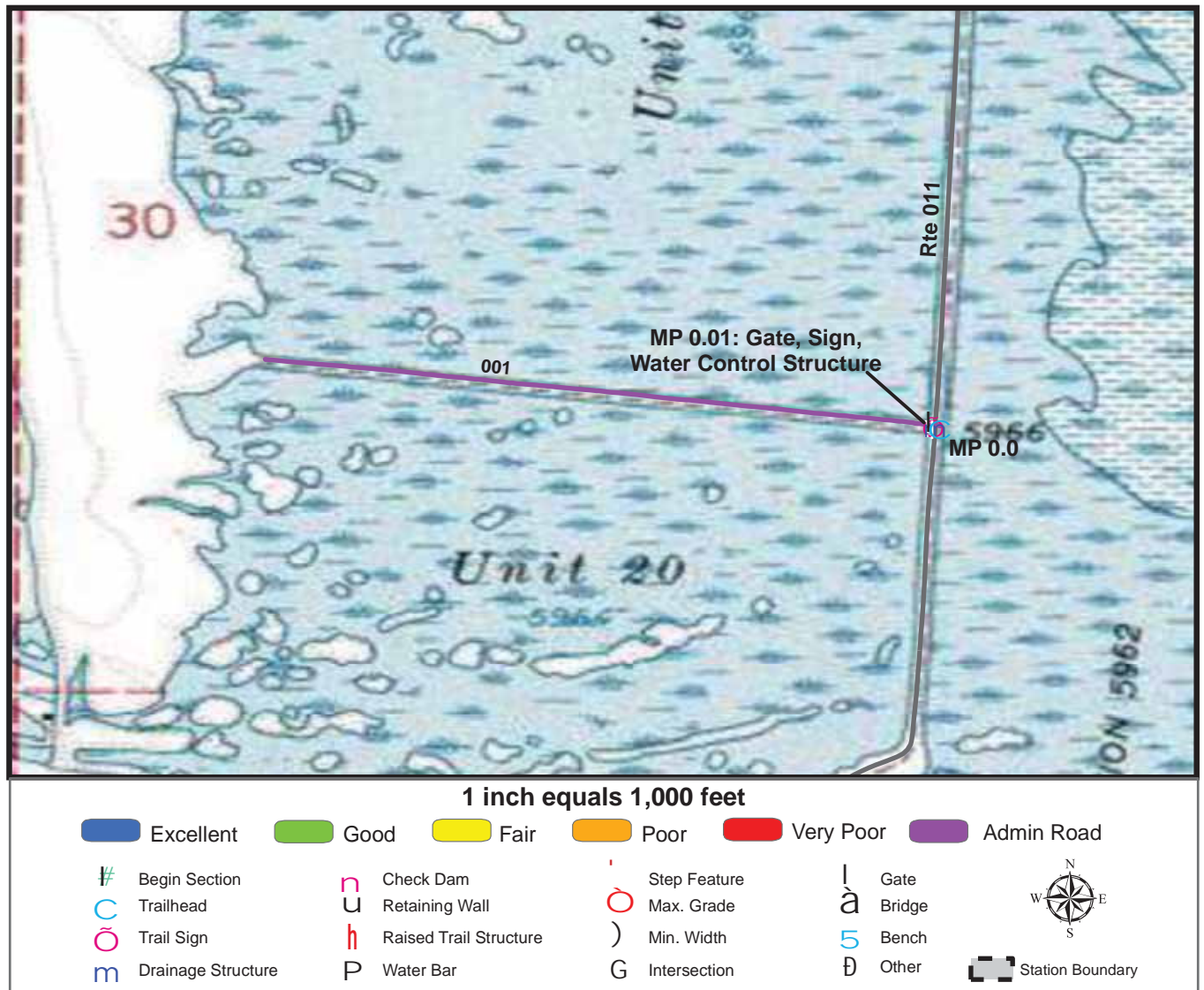
Section Number	001				
Section Length (miles)	0.74				
SAMMS Number	10057395				
Rating Date	6/13/2007				
<b>Trail Section Information</b>					
Trail Class	TC3				
Surface Type	Admin Road				
Surface Firmness	Hard				
Width (inches)	72				
Average Grade (%)	1.2				
Average X-slope (%)	1.6				
<b>Trail Condition Information</b>					
Deferred Maintenance	\$0				
CRV	\$0				
FCI	0				
Condition	Excellent				

## Trail Condition TOTALS

Deferred Maintenance	CRV	FCI	Condition
\$0	\$0	0	Excellent



# TRAIL CONDITION



**Trail Name:** South West Marsh Trail

**Refuge Name:** Ruby Lake NWR

**Trail Number:** T303

**Region:** 8

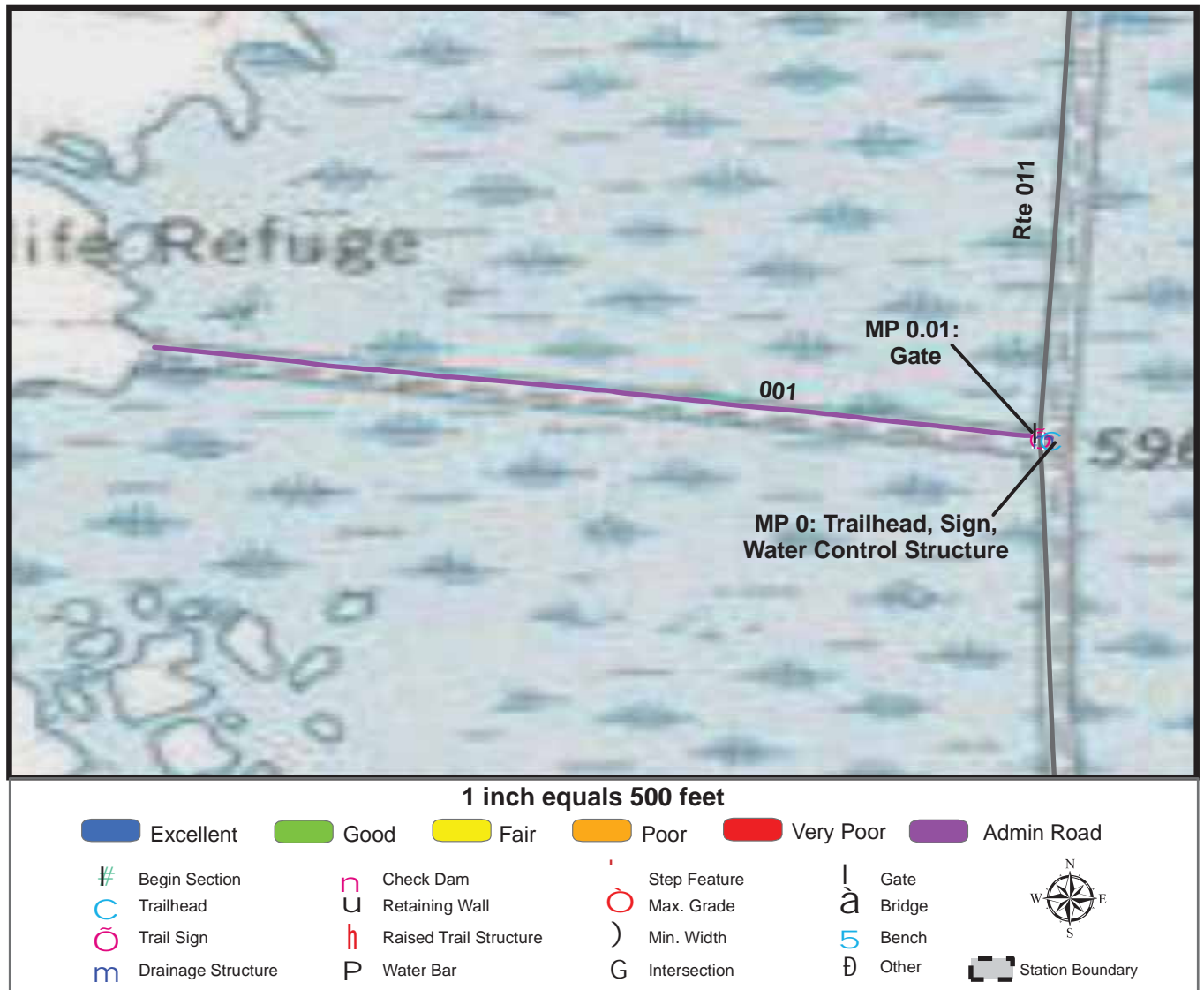
**TOTAL LENGTH:** 0.58 Miles

Section Number	001				
Section Length (miles)	0.58				
SAMMS Number					
Rating Date	6/13/2007				
<b>Trail Section Information</b>					
Trail Class	TC3				
Surface Type	Admin Road				
Surface Firmness	Hard				
Width (inches)	72				
Average Grade (%)	0.3				
Average X-slope (%)	0.6				
<b>Trail Condition Information</b>					
Deferred Maintenance	\$0				
CRV	\$0				
FCI	0				
Condition	Excellent				

## Trail Condition TOTALS

Deferred Maintenance	CRV	FCI	Condition
\$0	\$0	0	Excellent

# TRAIL CONDITION



**Trail Name:** North West Marsh Trail

**Refuge Name:** Ruby Lake NWR

**Trail Number:** T304

**Region:** 8

**TOTAL LENGTH:** 0.39 Miles

Section Number	001				
Section Length (miles)	0.39				
SAMMS Number					
Rating Date	6/13/2007				
<b>Trail Section Information</b>					
Trail Class	TC3				
Surface Type	Admin Road				
Surface Firmness	Hard				
Width (inches)	72				
Average Grade (%)	1.6				
Average X-slope (%)	2.9				
<b>Trail Condition Information</b>					
Deferred Maintenance	\$0				
CRV	\$0				
FCI	0				
Condition	Excellent				

## Trail Condition TOTALS

Deferred Maintenance	CRV	FCI	Condition
\$0	\$0	0	Excellent



# PHOTOGRAPHIC SHEET

TRAIL NUMBER: **T300**

STATION: Ruby Lake NWR

DATE: 6/13/2007



Photo # 2 - MP 0.0 - Trailhead

TRAIL NUMBER: **T300**

STATION: Ruby Lake NWR

DATE: 6/13/2007



Photo # 3 - MP 0.0 - Sign (Grouped Feature)



# PHOTOGRAPHIC SHEET

TRAIL NUMBER: **T300**

STATION: Ruby Lake NWR

DATE: 6/13/2007



Photo # 4 - MP 4.99 - Begin Section 003

TRAIL NUMBER: **T301**

STATION: Ruby Lake NWR

DATE: 6/13/2007



Photo # 6 - MP 0.0 - Trailhead

# PHOTOGRAPHIC SHEET

TRAIL NUMBER: **T301**

STATION: Ruby Lake NWR

DATE: 6/13/2007



Photo # 5 - MP 0.0 - Sign

TRAIL NUMBER: **T301**

STATION: Ruby Lake NWR

DATE: 6/13/2007



Photo # 7 - MP 0.09 - Begin Section 002



# PHOTOGRAPHIC SHEET

TRAIL NUMBER: **T301**

STATION: Ruby Lake NWR

DATE: 6/13/2007



Photo # 8 - MP 0.2 - Begin Section 003

TRAIL NUMBER: **T302**

STATION: Ruby Lake NWR

DATE: 6/13/2007



Photo # 10 - MP 0.0 - Trailhead



# PHOTOGRAPHIC SHEET

TRAIL NUMBER: **T302**

STATION: Ruby Lake NWR

DATE: 6/13/2007



Photo # 11 - MP 0.0 - Sign

TRAIL NUMBER: **T303**

STATION: Ruby Lake NWR

DATE: 6/13/2007



Photo # 12 - MP 0.0 - Trailhead



# PHOTOGRAPHIC SHEET

TRAIL NUMBER: **T303**

STATION: Ruby Lake NWR

DATE: 6/13/2007



Photo # 13 - MP 0.01 - Sign

TRAIL NUMBER: **T304**

STATION: Ruby Lake NWR

DATE: 6/13/2007



Photo # 14 - MP 0.0 - Trailhead

# PHOTOGRAPHIC SHEET

TRAIL NUMBER: T304

STATION: Ruby Lake NWR

DATE: 6/13/2007



Photo # 15 - MP 0.0 - Sign



# **The Trail Inventory of Stillwater National Wildlife Refuge Fallon, Nevada**



**Prepared By:  
Federal Highway Administration  
Central Federal Lands Highway Division  
June 2007**



# Stillwater NWR

## Trail and Trail Feature Summaries

### Trail Miles and Percentages by Surface Type and Condition

Trail Surface Type	Mileage by Trail Condition												Total Miles
	Excellent		Good		Fair		Poor		Very Poor		Not Rated*		
	MILES	%	MILES	%	MILES	%	MILES	%	MILES	%	MILES	%	
Native		0%		0%		0%		0%		0%		0%	0.00
Gravel	0.13	81%		0%		0%		0%		0%		0%	0.13
Asphalt		0%		0%		0%		0%		0%		0%	0.00
Concrete		0%		0%		0%		0%		0%		0%	0.00
Turnpike		0%		0%		0%		0%		0%		0%	0.00
Boardwalk	0.03	19%		0%		0%		0%		0%		0%	0.03
Puncheon		0%		0%		0%		0%		0%		0%	0.00
Woodchips		0%		0%		0%		0%		0%		0%	0.00
Mowed		0%		0%		0%		0%		0%		0%	0.00
Admin Road		0%		0%		0%		0%		0%		0%	0.00
Other		0%		0%		0%		0%		0%		0%	0.00
Totals	0.16	100%	0.00	0%	0.00	0%	0.00	0%	0.00	0%	0.00	0%	0.16

### Trail Miles and Percentages by Trail Classification and Condition

Trail Classification	Mileage by Trail Condition												Total Miles
	Excellent		Good		Fair		Poor		Very Poor		Not Rated*		
	MILES	%	MILES	%	MILES	%	MILES	%	MILES	%	MILES	%	
TC1		0%		0%		0%		0%		0%		0%	0.00
TC2		0%		0%		0%		0%		0%		0%	0.00
TC3		0%		0%		0%		0%		0%		0%	0.00
TC4	0.16	100%		0%		0%		0%		0%		0%	0.16
TC5		0%		0%		0%		0%		0%		0%	0.00
Totals	0.16	100%	0.00	0%	0.00	0%	0.00	0%	0.00	0%	0.00	0%	0.16

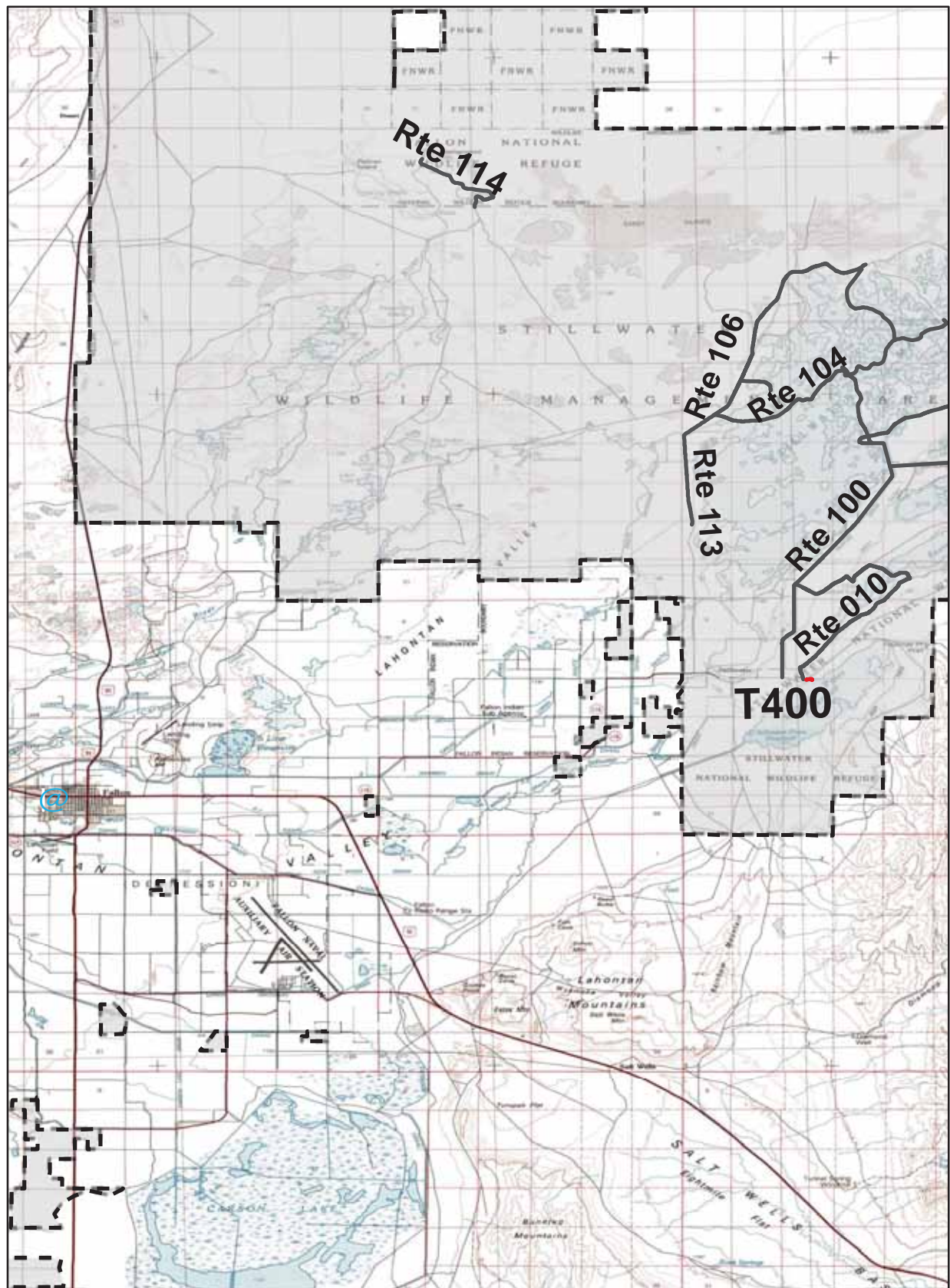
\* Admin Roads are included in the inventory but are not rated for condition.

Trail Features

Trail Number	Feature Type	Quantity	Grouped Feature	Milepost	Photo
N/A					
sf-square feet					
lf-linear feet					
cf-cubic feet					



# STILLWATER NWR TRAIL LOCATION MAP



Station Boundary



HQ/VC

0 6 12 Miles

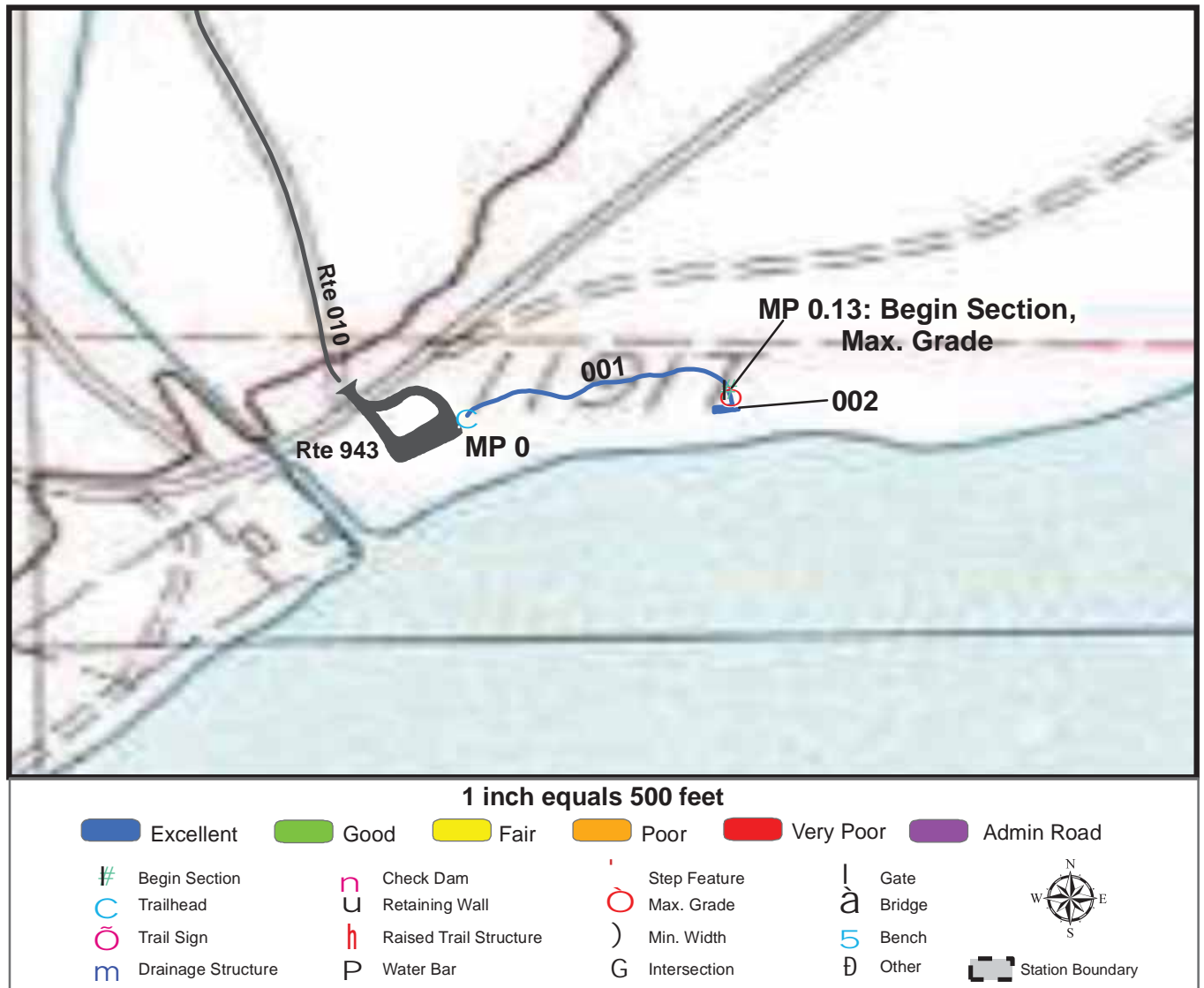
## TRAILS ID

**Station Name: Stillwater NWR**

**Org. Code: 84590**

Trail #	Trail Name	Surface Type(s)	SAMMS	Trail Mileage	Trail Description (Begin and End point of trail)
T400	Stillwater Point Reservoir Interpretative Trail	Gravel, Boardwalk	10054385	0.16	From Still Point Parking Area (Rte 943) to observation deck

# TRAIL CONDITION



**Trail Name:** Stillwater Point Reservoir Interperative Trail **Refuge Name:** Stillwater NWR

**Trail Number:** T400

**Region:** 8

**TOTAL LENGTH:** 0.16 Miles

Section Number	001	002			
Section Length (miles)	0.13	0.03			
SAMMS Number	10054385	10054385			
Rating Date	6/20/2007	6/20/2007			
<b>Trail Section Information</b>					
Trail Class	TC4	TC4			
Surface Type	Gravel	Boardwalk			
Surface Firmness	Firm	Paved			
Width (inches)	96	64			
Average Grade (%)	1.7	1.7			
Average X-slope (%)	1.5	1.5			
<b>Trail Condition Information</b>					
Deferred Maintenance	\$0	\$0			
CRV	\$32502	\$24549			
FCI	0	0			
Condition	Excellent	Excellent			

## Trail Condition TOTALS

Deferred Maintenance	CRV	FCI	Condition
\$0	\$57051	0	Excellent



# PHOTOGRAPHIC SHEET

TRAIL NUMBER: **T400**

STATION: Stillwater NWR

DATE: 6/20/2007



Photo # 2 - MP 0.0 - Trailhead

TRAIL NUMBER: **T400**

STATION: Stillwater NWR

DATE: 9/13/2007



Photo # 3 - MP 0.13 - Begin Section 002

## APPENDIX

### Glossary of Terms and Abbreviations

<b>Acc Info</b>	Accessibility information available at trailhead.
<b>Action</b>	Action required to correct deficiency.
<b>Admin Road</b>	Administration Road. Admin Roads signed and advertised as trails are included in the trail inventory but a condition assessment is NOT done.
<b>Alt SAMMS</b>	Asset number of Alternate Facility Type.
<b>Alt Type</b>	Alternate Facility Type. Trail lies on a feature such as a levee, dam, administrative road or bridge, which has a separate SAMMS number.
<b>AvgGrade</b>	The average grade of the trail (%). The average of five measurements for trails less than two miles and ten measurements for trails equal to or greater than 2 miles.
<b>AvgSlope</b>	The average cross-slope of the trail (%). The average of five measurements for trails less than two miles and ten measurements for trails equal to or greater than 2 miles.
<b>Check Dam</b>	A small dam constructed across a drainage ditch, swale, or channel to lower the speed of concentrated flows.
<b>Condition</b>	Subjective rating of trail based on Facility Condition Index (FCI): FCI $\leq$ .01 = Excellent FCI .011 - .05 = Good FCI .051 - .10 = Fair FCI .11 - .20 = Poor FCI $>$ .20 = Very Poor
<b>Crib Wall</b>	Retaining wall.
<b>Current Replacement Value (CRV)</b>	The value of an asset determined by the estimated cost of replacing it.
<b>Def type</b>	Deficiency Type: Trail Structure, Drainage, Erosion, Obstacle, Trail Location, Other.

<b>Deferred Maintenance (DM)</b>	Maintenance that was not performed when scheduled.
<b>Elem ID</b>	Unique identifier for each trail section: Org Code-Trail Number-Section Number.
<b>Facility Condition Index (FCI)</b>	DM/CRV
<b>Grouped Features</b>	Grouped features include non-unique signs (mileposts, interpretive signs, species identification, etc.), water bars, check dams, steps, drain and drainage dips. For any given grouped feature, a GPS point and photo are taken for the first occurrence only and the total number of features in the group are entered into the “quantity” field of the data dictionary. CRV for grouped features are included in whatever trail section the GPS point was taken.
<b>Info Type</b>	Type of accessibility information available at trailhead: brochure, sign or other.
<b>Item</b>	Item on which the “Action” (see above) will be performed.
<b>Manage_Use</b>	Managed use of the trail: HIKE, BIKE, NSPC (non-specified), PACK, POR (portage), SNOWSHOE, XSKI (cross-country ski), OTHER.
<b>Max Grade</b>	Maximum grade (in percent) of trail. Only collected for Trail Classes 4 and 5 and when > 10%.
<b>Min Width</b>	Minimum Width (inches) of trail. Only collected for Trail Classes 4 and 5.
<b>MP (Milepost)</b>	Distance, in miles, of a trail feature or deficiency from the Trailhead.
<b>Puncheon</b>	Log footbridge used in area of poor drainage.
<b>Raised Trail Structure</b>	Boardwalk, Turnpike, Puncheon.
<b>SAMMS No</b>	Asset Number



<b>Station Boundary</b>	Approved Acquisition Boundary files downloaded from FWS website in March 2007.
<b>T Class</b>	Trail Class: TC1-5 (see Trail Classification System for descriptions).
<b>Tr Desig</b>	Trail Designation: Standard (Std), National Historic Trail (NHT), National Recreation Trail (NRT), National Scenic Trail (NST).
<b>Trail No</b>	Trails are numbered based on Trail Class at the trailhead. TC 1 = T100 series, TC2 = T200 series, etc.
<b>Turnpike</b>	Trail tread elevated with dirt, rock or other aggregate from parallel side ditches and held in place by logs.



## Trail Classification

Trail Attributes	Trail Class 1 Minimal/Undeveloped Trail	Trail Class 2 Simple/Minor Development Trail	Trail Class 3 Developed/Improved Trail	Trail Class 4 Highly Developed Trail	Trail Class 5 Fully Developed Trail
<b>General Criteria</b> Physical Characteristics to be Applied to All National Forest System Trails					
<b>Tread &amp; Traffic Flow</b>	<ul style="list-style-type: none"> <li>•Tread intermittent and often indistinct</li> <li>•May require route finding</li> <li>•Native materials only</li> </ul>	<ul style="list-style-type: none"> <li>•Tread discernible and continuous, but narrow and rough</li> <li>•Few or no allowances constructed for passing</li> <li>•Native materials</li> </ul>	<ul style="list-style-type: none"> <li>•Tread obvious and continuous</li> <li>•Width accommodates unhindered one-lane travel (occasional allowances constructed for passing)</li> <li>•Typically native materials</li> </ul>	<ul style="list-style-type: none"> <li>•Tread wide and relatively smooth with few irregularities</li> <li>•Width may consistently accommodate two-lane travel</li> <li>•Native or imported materials</li> <li>•May be hardened</li> </ul>	<ul style="list-style-type: none"> <li>•Width generally accommodates two-lane and two-directional travel, or provides frequent passing turnouts</li> <li>•Commonly hardened with asphalt or other imported material</li> </ul>
<b>Obstacles</b>	<ul style="list-style-type: none"> <li>•Obstacles common</li> <li>•Narrow passages; brush, steep grades, rocks and logs present</li> </ul>	<ul style="list-style-type: none"> <li>•Obstacles occasionally present</li> <li>•Blockages cleared to define route and protect resources</li> <li>•Vegetation may encroach into trailway</li> </ul>	<ul style="list-style-type: none"> <li>•Obstacles infrequent</li> <li>•Vegetation cleared outside of trailway</li> </ul>	<ul style="list-style-type: none"> <li>•Few or no obstacles exist</li> <li>•Grades typically &lt;12%</li> <li>•Vegetation cleared outside of trailway</li> </ul>	<ul style="list-style-type: none"> <li>•No obstacles</li> <li>•Grades typically &lt;8%</li> </ul>
<b>Constructed Features &amp; Trail Elements</b>	<ul style="list-style-type: none"> <li>•Minimal to non-existent</li> <li>•Drainage is functional</li> <li>•No constructed bridges or foot crossings</li> </ul>	<ul style="list-style-type: none"> <li>•Structures are of limited size, scale, and number</li> <li>•Drainage functional</li> <li>•Structures adequate to protect trail infrastructure and resources</li> <li>•Primitive foot crossings and fords</li> </ul>	<ul style="list-style-type: none"> <li>•Trail structures (walls, steps, drainage, raised trail) may be common and substantial</li> <li>•Trail bridges as needed for resource protection and appropriate access</li> <li>•Generally native materials used in Wilderness</li> </ul>	<ul style="list-style-type: none"> <li>•Structures frequent and substantial</li> <li>•Substantial trail bridges are appropriate at water crossings</li> <li>•Trailside amenities may be present</li> </ul>	<ul style="list-style-type: none"> <li>•Structures frequent or continuous; may include curbs, handrails, trailside amenities, and boardwalks</li> <li>•Drainage structures frequent; may include culverts and road-like designs</li> </ul>
<b>Signs</b>	<ul style="list-style-type: none"> <li>•Minimum required</li> <li>•Generally limited to regulation and resource protection</li> <li>•No destination signs present</li> </ul>	<ul style="list-style-type: none"> <li>•Minimum required for basic direction</li> <li>•Generally limited to regulation and resource protection</li> <li>•Typically very few or no destination signs present</li> </ul>	<ul style="list-style-type: none"> <li>•Regulation, resource protection, user reassurance</li> <li>•Directional signs at junctions, or when confusion is likely</li> <li>•Destination signs typically present</li> <li>•Informational and interpretive signs may be present outside of Wilderness</li> </ul>	<ul style="list-style-type: none"> <li>•Wide variety of signs likely present</li> <li>•Informational signs likely (outside of Wilderness)</li> <li>•Interpretive signs possible (outside of Wilderness)</li> <li>•Trail Universal Access information likely displayed at trailhead</li> </ul>	<ul style="list-style-type: none"> <li>•Wide variety of signage is present</li> <li>•Information and interpretive signs likely</li> <li>•Trail Universal Access information is typically displayed at trailhead</li> <li>•</li> </ul>
<b>Typical Recreation Environments &amp; Experience<sup>2</sup></b>	<ul style="list-style-type: none"> <li>•Natural, unmodified</li> <li>•ROS: Often Primitive setting, but may occur in other ROS settings</li> <li>•WROS: Primitive</li> </ul>	<ul style="list-style-type: none"> <li>•Natural, essentially unmodified</li> <li>•ROS: Typically Semi-Primitive setting</li> <li>•WROS: Primitive to Semi-Primitive</li> </ul>	<ul style="list-style-type: none"> <li>•Natural, primarily unmodified</li> <li>•ROS: Typically Semi-Primitive to Rugged Natural setting</li> <li>•WROS: Semi-Primitive to Transition</li> </ul>	<ul style="list-style-type: none"> <li>•May be modified</li> <li>•ROS: Typically Rugged Natural to Rural setting</li> <li>•WROS: Transition (rarely present in Wilderness)</li> </ul>	<ul style="list-style-type: none"> <li>•Can be highly modified</li> <li>•ROS: Typically Rural to Urban setting</li> <li>•Commonly associated with Visitor Centers or high-use recreation sites</li> <li>•Not present in Wilderness</li> </ul>

Note: Trail Class descriptions define "typical" attributes, and exceptions may occur for any attribute.