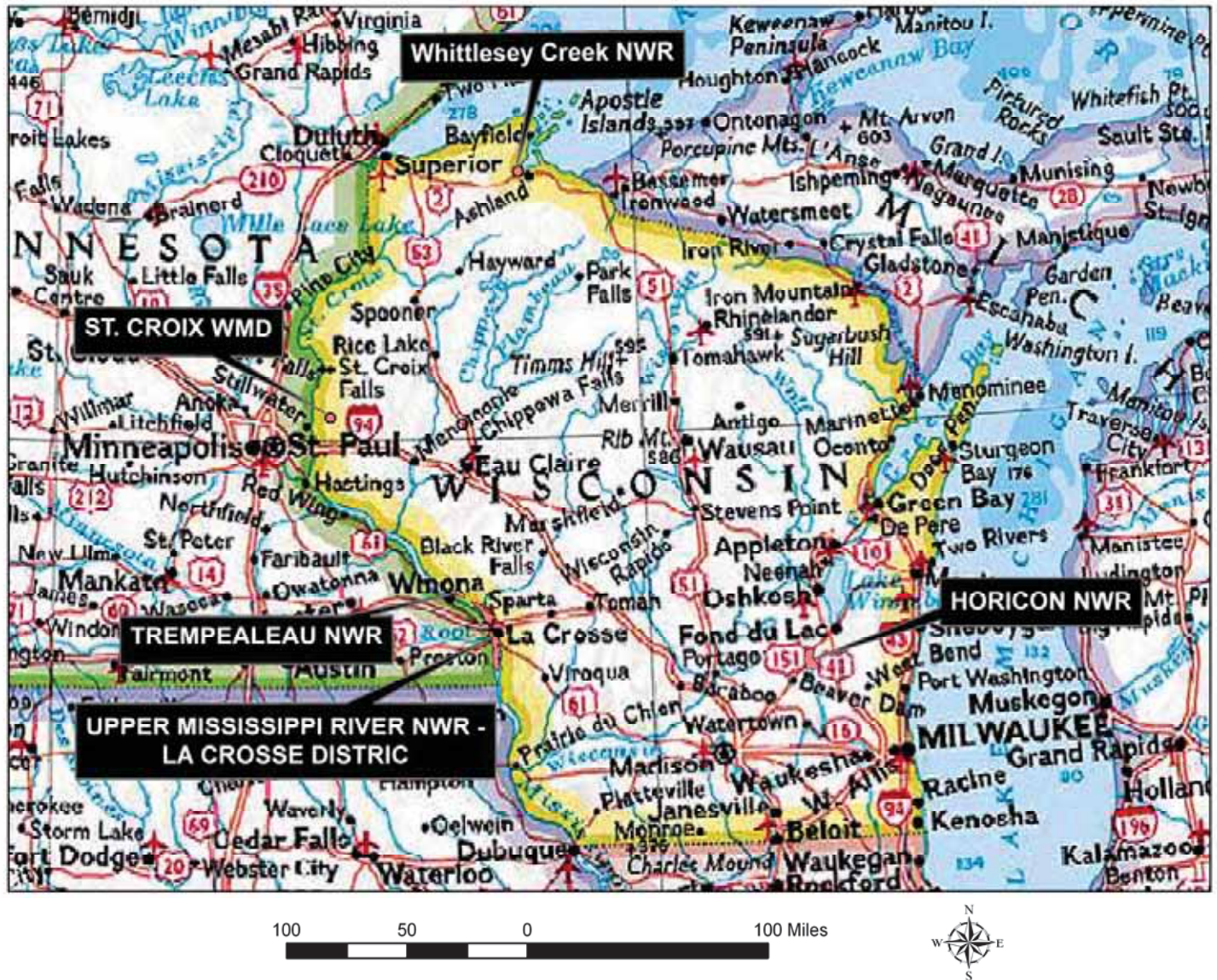


The Trail Inventory of U.S. Fish and Wildlife Service Stations In Wisconsin



Prepared By:
Federal Highway Administration
Central Federal Lands Highway Division
February, 2007

TABLE OF CONTENTS

<u>CHAPTERS</u>		<u>PAGE</u>
1.	<u>WI STATE SUMMARY</u>	
	Table of Contents	1-1
	List of Refuges	1-2
	Mileage by Trail Class, Condition, and Surface	1-3
2-6.	<u>REFUGE SUMMARIES</u>	
	Mileage by Trail Class, Condition, and Surface	X-1
	Trail Location Map	X-2
	Trail Identification	X-3
	Condition and Deficiency Sheets	X-4
	Photographic Sheets	X-5
7.	<u>APPENDIX</u>	
	Glossary of Terms and Abbreviations	7-1
	Trail Classification System	7-4

FWS Stations in Wisconsin with Trails

Station Name	Trail Miles	Chapter
Horicon	6.71	2
St. Croix WMD	0.87	3
Trempealeau NWR	8.20	4
Upper Mississippi-LaCrosse Dist. NWR	1.15	5
Whittlesey Creek NWR	0.10	6

Wisconsin FWS Stations Trail Summaries

Trail Miles and Percentages by Surface Type and Condition

Trail Surface Type	Mileage by Trail Condition												Total Miles
	Excellent		Good		Fair		Poor		Very Poor		Not Rated*		
	MILES	%	MILES	%	MILES	%	MILES	%	MILES	%	MILES	%	
Native	5.72	34%		0%		0%		0%		0%		0%	5.72
Gravel	0.47	3%		0%		0%		0%		0%		0%	0.47
Asphalt	0.62	4%	0.04	0%		0%		0%		0%		0%	0.66
Concrete		0%		0%		0%		0%		0%		0%	0.00
Turnpike		0%		0%		0%		0%		0%		0%	0.00
Boardwalk		0%		0%		0%		0%		0%		0%	0.00
Puncheon		0%		0%		0%		0%		0%		0%	0.00
Woodchips		0%		0%		0%		0%		0%		0%	0.00
Mowed	2.58	15%	1.14	7%		0%		0%		0%		0%	3.72
Admin Road		0%		0%		0%		0%		0%	6.46	38%	6.46
Other		0%		0%		0%		0%		0%		0%	0.00
Totals	9.39	55%	1.18	7%	0.00	0%	0.00	0%	0.00	0%	6.46	38%	17.03

Trail Miles and Percentages by Trail Classification and Condition

Trail Classification	Mileage by Trail Condition												Total Miles
	Excellent		Good		Fair		Poor		Very Poor		Not Rated*		
	MILES	%	MILES	%	MILES	%	MILES	%	MILES	%	MILES	%	
TC1		0%		0%		0%		0%		0%		0%	0.00
TC2		0%	0.87	5%		0%		0%		0%		0%	0.87
TC3	2.06	12%	0.27	2%		0%		0%		0%		0%	2.33
TC4	6.71	39%		0%		0%		0%		0%	6.46	38%	13.17
TC5	0.62	4%	0.04	0%		0%		0%		0%		0%	0.66
Totals	9.39	55%	1.18	7%	0.00	0%	0.00	0%	0.00	0%	6.46	38%	17.03

* Admin Roads are included in the inventory but are not rated for condition.

The Trail Inventory of Horicon National Wildlife Refuge Mayville, Wisconsin



**Prepared By:
Federal Highway Administration
Central Federal Lands Highway Division
August, 2006**



Horicon NWR

Trail and Trail Feature Summaries

Trail Miles and Percentages by Surface Type and Condition

Trail Surface Type	Mileage by Trail Condition												Total Miles
	Excellent		Good		Fair		Poor		Very Poor		Not Rated*		
	MILES	%	MILES	%	MILES	%	MILES	%	MILES	%	MILES	%	
Native	5.72	85%		0%		0%		0%		0%		0%	5.72
Gravel	0.37	6%		0%		0%		0%		0%		0%	0.37
Asphalt	0.62	9%		0%		0%		0%		0%		0%	0.62
Concrete		0%		0%		0%		0%		0%		0%	0.00
Turnpike		0%		0%		0%		0%		0%		0%	0.00
Boardwalk		0%		0%		0%		0%		0%		0%	0.00
Puncheon		0%		0%		0%		0%		0%		0%	0.00
Woodchips		0%		0%		0%		0%		0%		0%	0.00
Mowed		0%		0%		0%		0%		0%		0%	0.00
Admin Road		0%		0%		0%		0%		0%		0%	0.00
Other		0%		0%		0%		0%		0%		0%	0.00
Totals	6.71	100%	0.00	0%	0.00	0%	0.00	0%	0.00	0%	0.00	0%	6.71

Trail Miles and Percentages by Trail Classification and Condition

Trail Classificatio n	Mileage by Trail Condition												Total Miles
	Excellent		Good		Fair		Poor		Very Poor		Not Rated*		
	MILES	%	MILES	%	MILES	%	MILES	%	MILES	%	MILES	%	
TC1		0%		0%		0%		0%		0%		0%	0.00
TC2		0%		0%		0%		0%		0%		0%	0.00
TC3		0%		0%		0%		0%		0%		0%	0.00
TC4	6.09	91%		0%		0%		0%		0%		0%	6.09
TC5	0.62	9%		0%		0%		0%		0%		0%	0.62
Totals	6.71	100%	0.00	0%	0.00	0%	0.00	0%	0.00	0%	0.00	0%	6.71

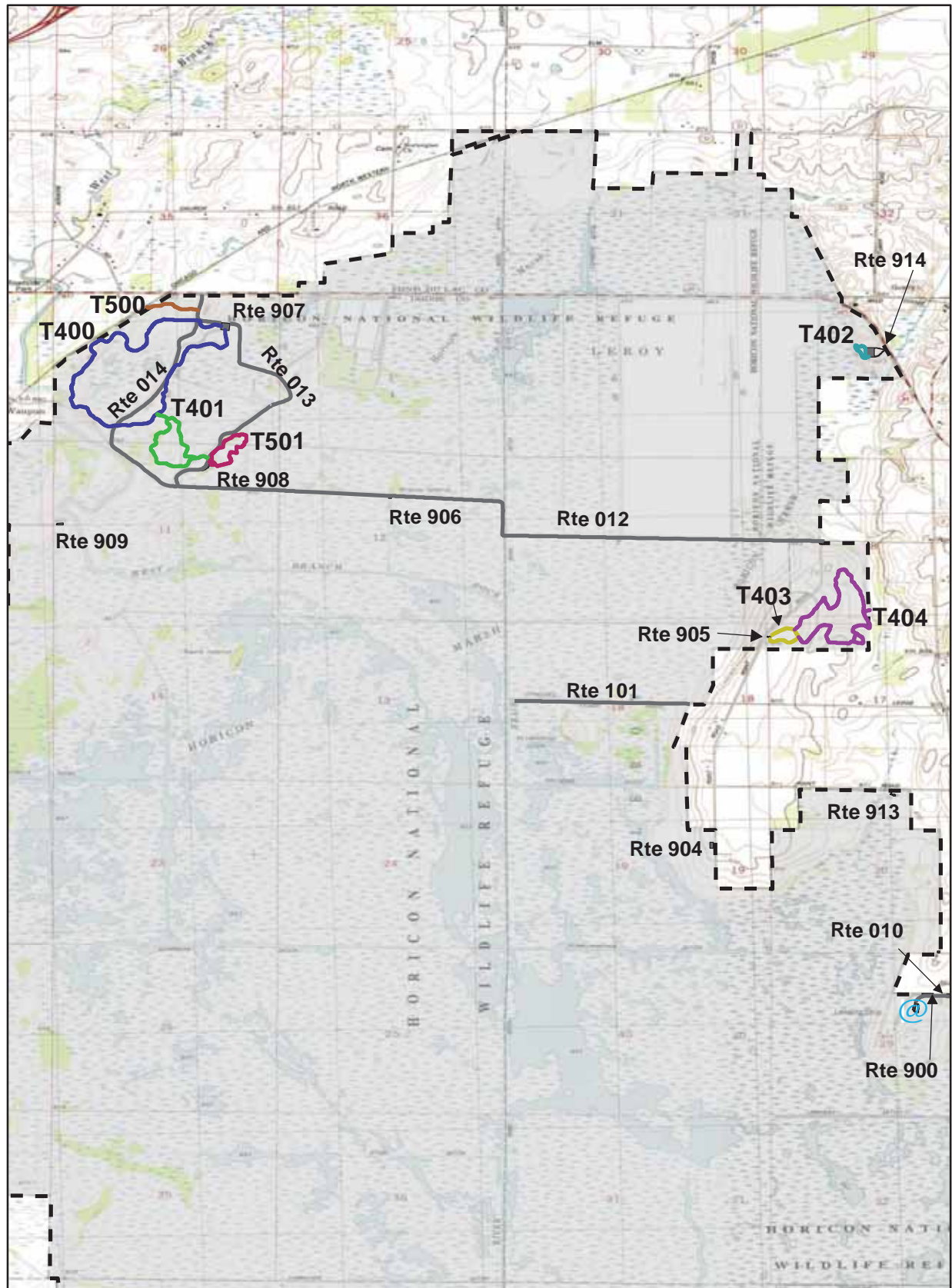
* Admin Roads are included in the inventory but are not rated for condition.

Trail Features

Trail Number	Feature Type	Quantity	Grouped Feature	Milepost	Photo
T400	Sign	10		0.00	1662-1664
T400	Bench	1		0.00	N/A
T400	Sign	12	Yes	0.01	1665
T400	Bench	1		0.06	N/A
T400	Bench	1		0.47	N/A
T400	Bench	1		0.59	N/A
T400	Sign	2		0.72	1666
T400	Sign	4	Yes	0.95	1667
T400	Bench	1		1.21	N/A
T400	Bench	1		1.26	N/A
T400	Boardwalk -lf	66		1.36	1669
T400	Bench	1		1.55	N/A
T400	Boardwalk -lf	81		1.79	1675
T400	Bench	1		1.96	N/A
T400	Bench	1		2.08	N/A
T400	Bench	1		2.19	N/A
T400	Culvert -lf	25		2.22	N/A
T401	Sign	1	Yes	0.01	1681
T401	Sign	5	Yes	0.02	1682
T401	Boardwalk -lf	18		0.08	1683
T401	Bench	1		0.20	N/A
T401	Bench	1		0.39	N/A
T401	Bench	1		0.47	N/A
T401	Bench	1		0.54	N/A
T401	Bench	1		0.80	N/A
T402	Boardwalk -lf	24		0.00	1709
T402	Sign	1		0.21	1714
T402	Sign	28		0.22	1699-1708
T402	Boardwalk -lf	12		0.22	1713
T403	Sign	8		0.00	1715-6
T403	Sign	2		0.00	1717
T403	Sign	1		0.00	1718
T403	Bench	1		0.00	N/A
T403	Lookout/Ob Deck	1		0.00	N/A
T403	Bench	1		0.16	N/A
T403	Bench	1		0.27	N/A
T404	Culvert -lf	10		0.16	N/A
T404	Bench	1		0.28	N/A
T404	Bench	2		0.50	N/A
T404	Bench	1		0.53	N/A
T404	Culvert -lf	10		0.67	N/A
T404	Bridge -sf	250		0.77	1724
T404	Lookout/Ob Deck	1		0.77	N/A
T404	Bench	1		1.04	N/A
T404	Culvert -lf	10		1.13	N/A
T404	Bench	1		1.37	N/A
T500	Sign	1		0.00	1679
T501	Sign	4		0.00	1685
T501	Sign	1		0.00	1687
T501	Lookout/Ob Deck	1		0.08	N/A
T501	Bridge -sf	390		0.20	1690

T501	Sign	1		0.20	1691
T501	Lookout/Ob Deck	1		0.20	N/A
T501	Bridge -sf	528		0.33	1693
T501	Bench	1		0.34	N/A
T501	Bench	1		0.54	N/A
T501	Sign	2	Yes	0.59	1694
T501	Boardwalk -lf	95		0.60	1697
T501	Sign	1		0.61	1695
T501	Boardwalk -lf	23		0.61	1698
T501	Bench	3		0.61	N/A
sf-square feet					
lf-linear feet					
cf-cubic feet					

HORICON NATIONAL WILDLIFE REFUGE TRAIL LOCATION MAP



 Station Boundary

 HQ/VC

 Miles
0 1 2

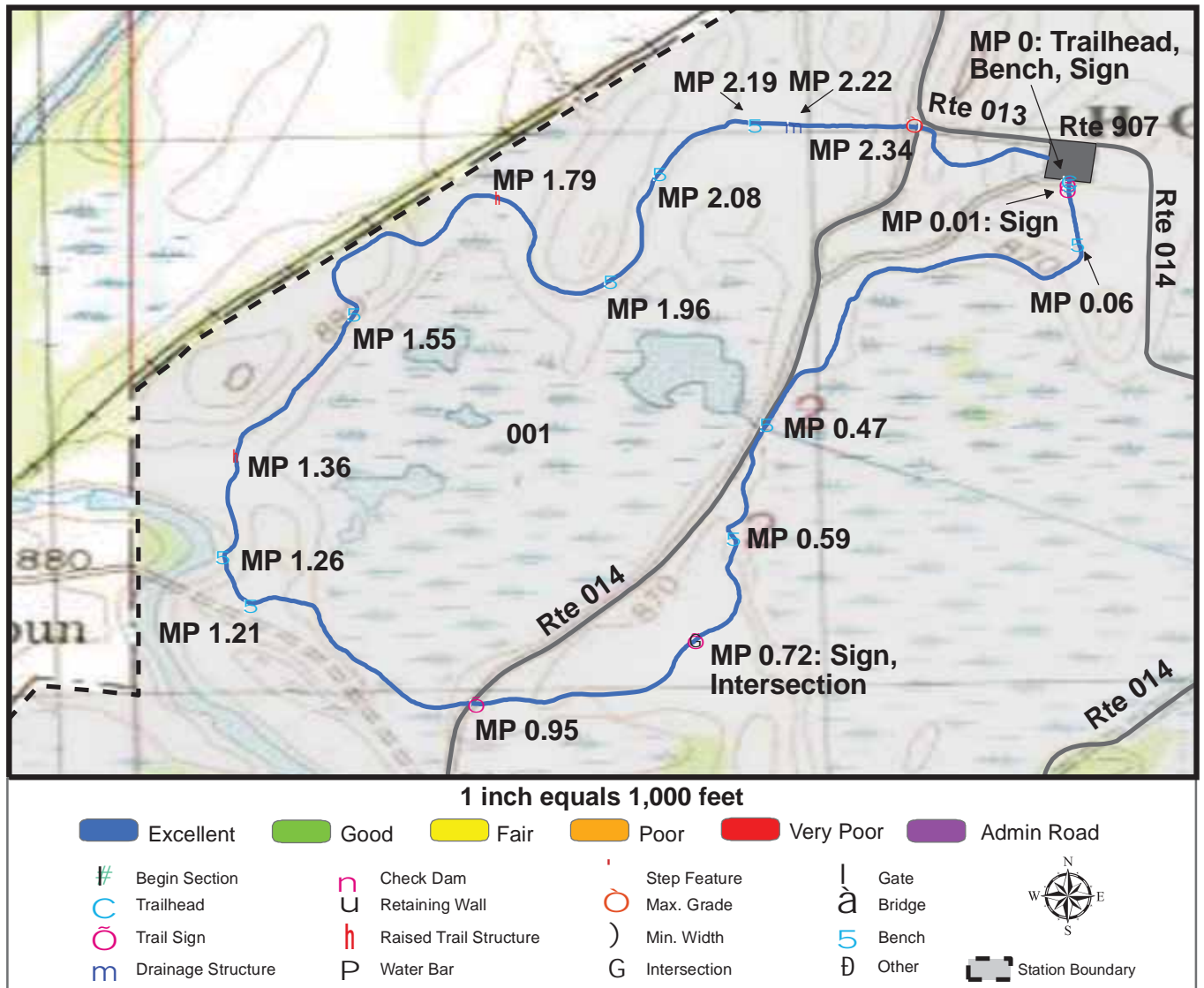
TRAILS ID

Station Name: Horicon NWR

Org. Code: 32520

Trail #	Trail Name	Surface Type	SAMMS	Trail Mileage	Trail Description (Begin and End point of trail)
T400	Redhead Trail	Native	10011306	2.49	From Auto Tour Parking (Rte 907) to end of loop.
T401	Red Fox Nature Trail	Native	10011307	1.01	From Auto Tour Midway Parking (Rte 908) to Redhead Trail (T400).
T402	Viewing Area Trail	Native/Asphalt	10041739	0.22	From Viewing Area Parking (Rte 914) to trailhead.
T403	Deer Track Trail	Native	10011309	0.32	From Bud Cook Parking (Rte 905) to end of loop.
T404	Two Hawks Trail	Native	10011310	1.76	From Deer Track Trail (T403) to observation deck.
T500	Connection to Wild Goose State Park	Asphalt	10041738	0.25	From Auto Tour (Rte 013) to NWRI Boundry.
T501	Egret Trail	Gravel, Asphalt	10011308	0.66	From Auto Tour Midway Parking (Rte 908) to end of loop.

TRAIL CONDITION



Trail Name: Redhead Trail

Refuge Name: Horicon NWR

Trail Number: T400

Region: 3

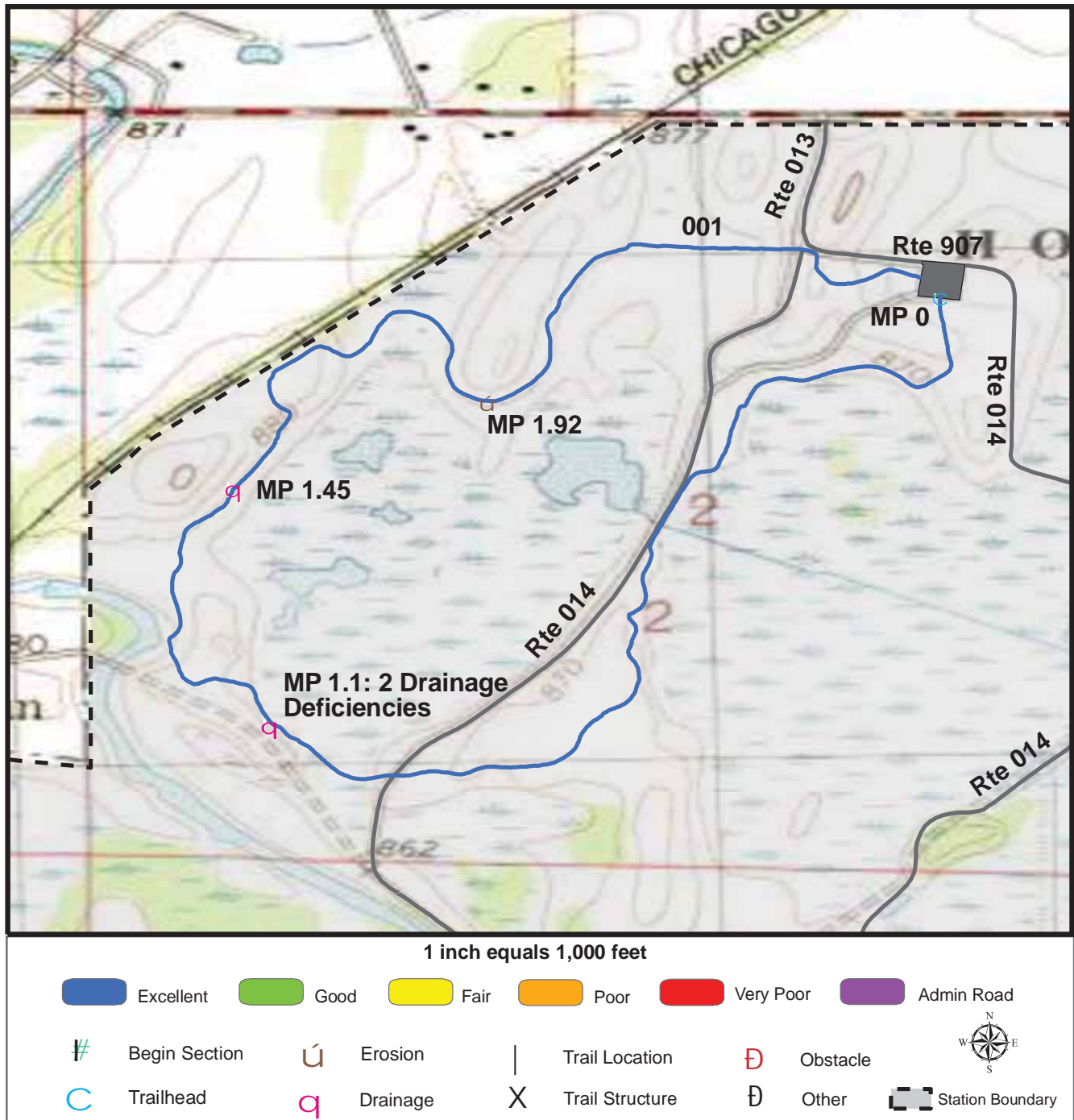
TOTAL LENGTH: 2.49 Miles

Section Number	001				
Section Length (miles)	2.49				
SAMMS Number	10011306				
Rating Date	8/22/2006				
Trail Section Information					
Trail Class	TC4				
Surface Type	Native				
Surface Firmness	Hard				
Width (inches)	84				
Average Grade (%)	3.3				
Average X-slope (%)	5.3				
Trail Condition Information					
Deferred Maintenance	\$2700				
CRV	\$468500				
FCI	0.006				
Condition	Excellent				

Trail Condition TOTALS

Deferred Maintenance	CRV	FCI	Condition
\$2700	\$468500	0.006	Excellent

TRAIL DEFICIENCY



Trail Name: Redhead Trail

Refuge Name: Horicon NWR

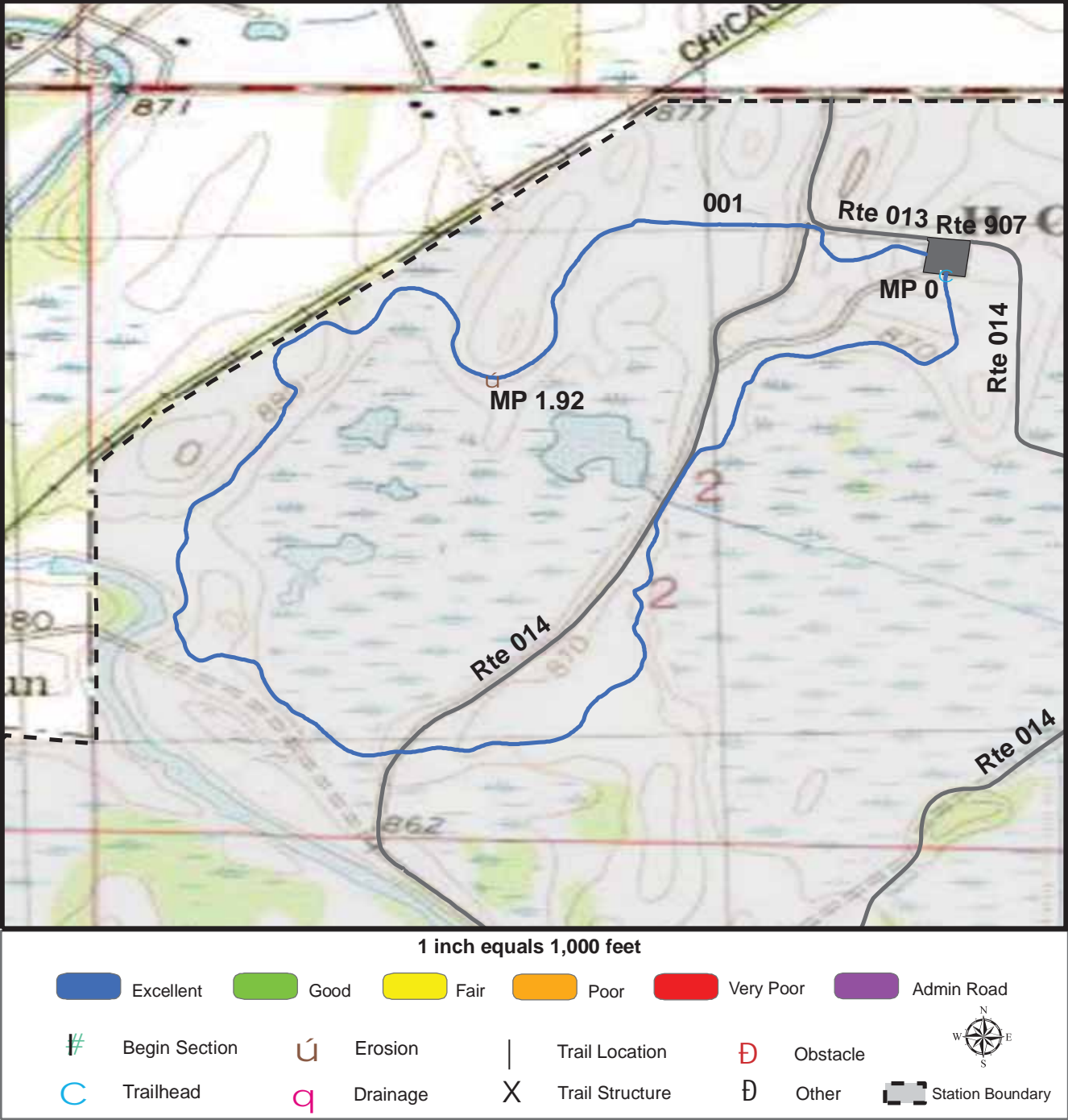
Trail Number: T400

Region: 3

TOTAL LENGTH: 2.49 Miles

Mile Post	1.1	1.1	1.45	1.92
Section Number	001	001	001	001
Photo Number	1668	1668	1670-1671	1677
Deficiency	Drainage	Drainage	Drainage	Erosion
Action	Build/Add	Repair	Repair	Build/Add
Item	Culvert -lf	Tread -sf	Tread -sf	Culvert -lf
Quantity	10	20	15	10
Deferred Maintenance	\$1200	\$100	\$100	\$1200

TRAIL DEFICIENCY



Trail Name: Redhead Trail

Refuge Name: Horicon NWR

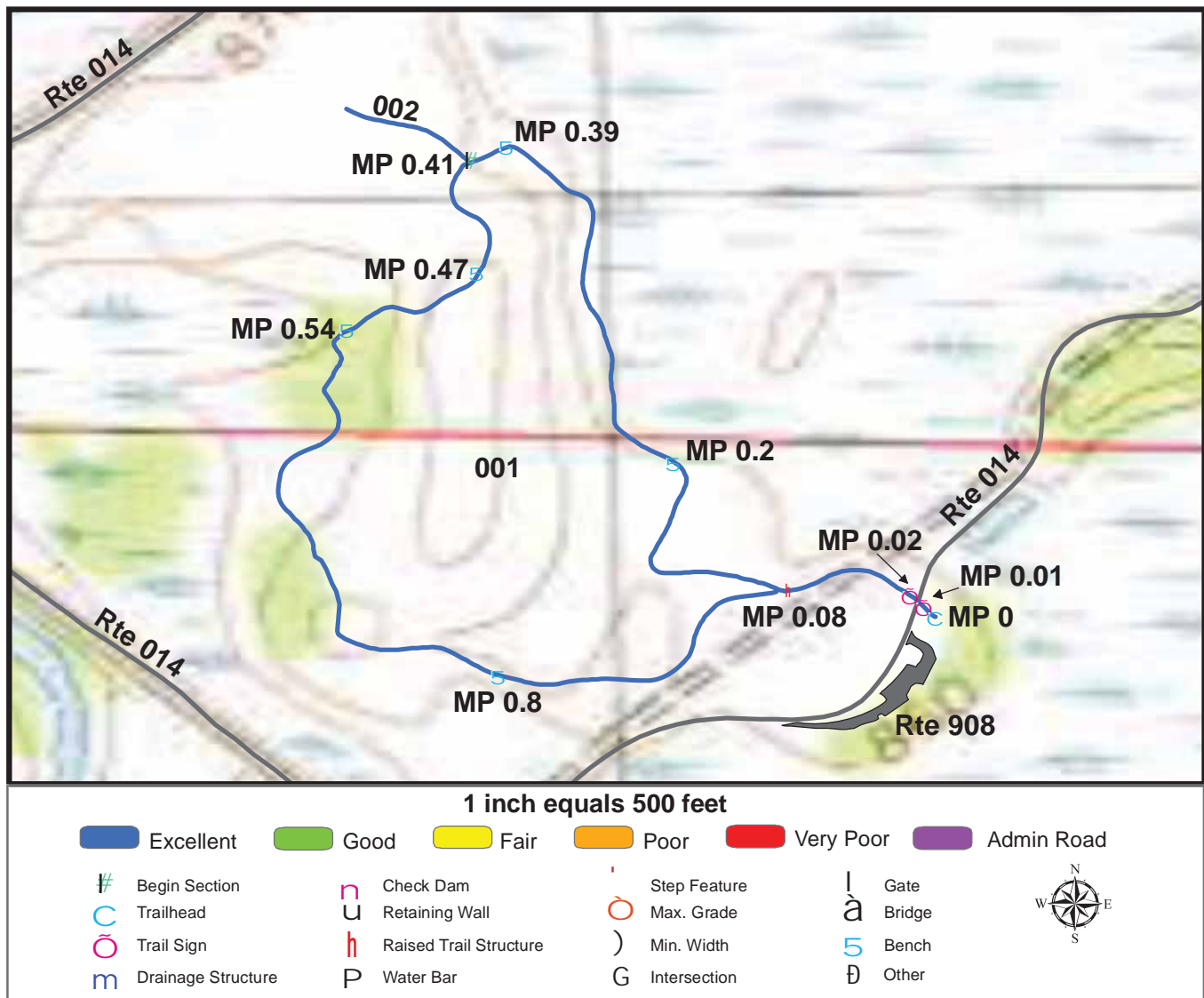
Trail Number: T400

Region: 3

TOTAL LENGTH: 2.49 Miles

Mile Post	1.92			
Section Number	001			
Photo Number	1677			
Deficiency	Erosion			
Action	Build/Add			
Item	Tread -sf			
Quantity	15			
Deferred Maintenance	\$100			

TRAIL CONDITION



Trail Name: Red Fox Nature Trail

Refuge Name: Horicon NWR

Trail Number: T401

Region: 3

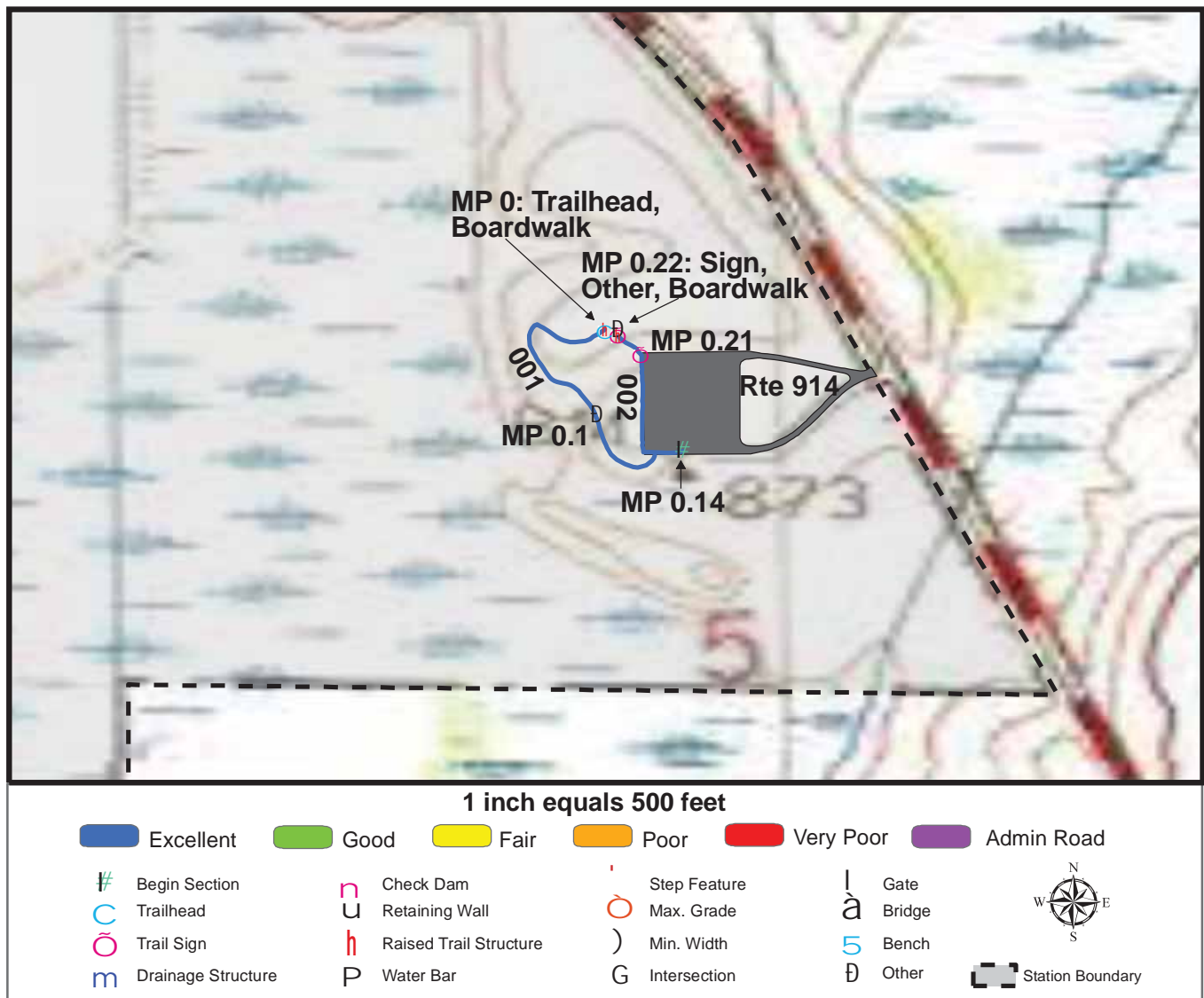
TOTAL LENGTH: 1.01 Miles

Section Number	001	002			
Section Length (miles)	0.95	0.06			
SAMMS Number	10011307	10011307			
Rating Date	8/22/2006	8/22/2006			
Trail Section Information					
Trail Class	TC4	TC4			
Surface Type	Native	Native			
Surface Firmness	Hard	Hard			
Width (inches)	96	96			
Average Grade (%)	1.8	1.8			
Average X-slope (%)	1	1			
Trail Condition Information					
Deferred Maintenance	\$0	\$0			
CRV	\$201900	\$12200			
FCI	0	0			
Condition	Excellent	Excellent			

Trail Condition TOTALS

Deferred Maintenance	CRV	FCI	Condition
\$0	\$214100	0	Excellent

TRAIL CONDITION



Trail Name: Viewing Area Trail

Refuge Name: Horicon NWR

Trail Number: T402

Region: 3

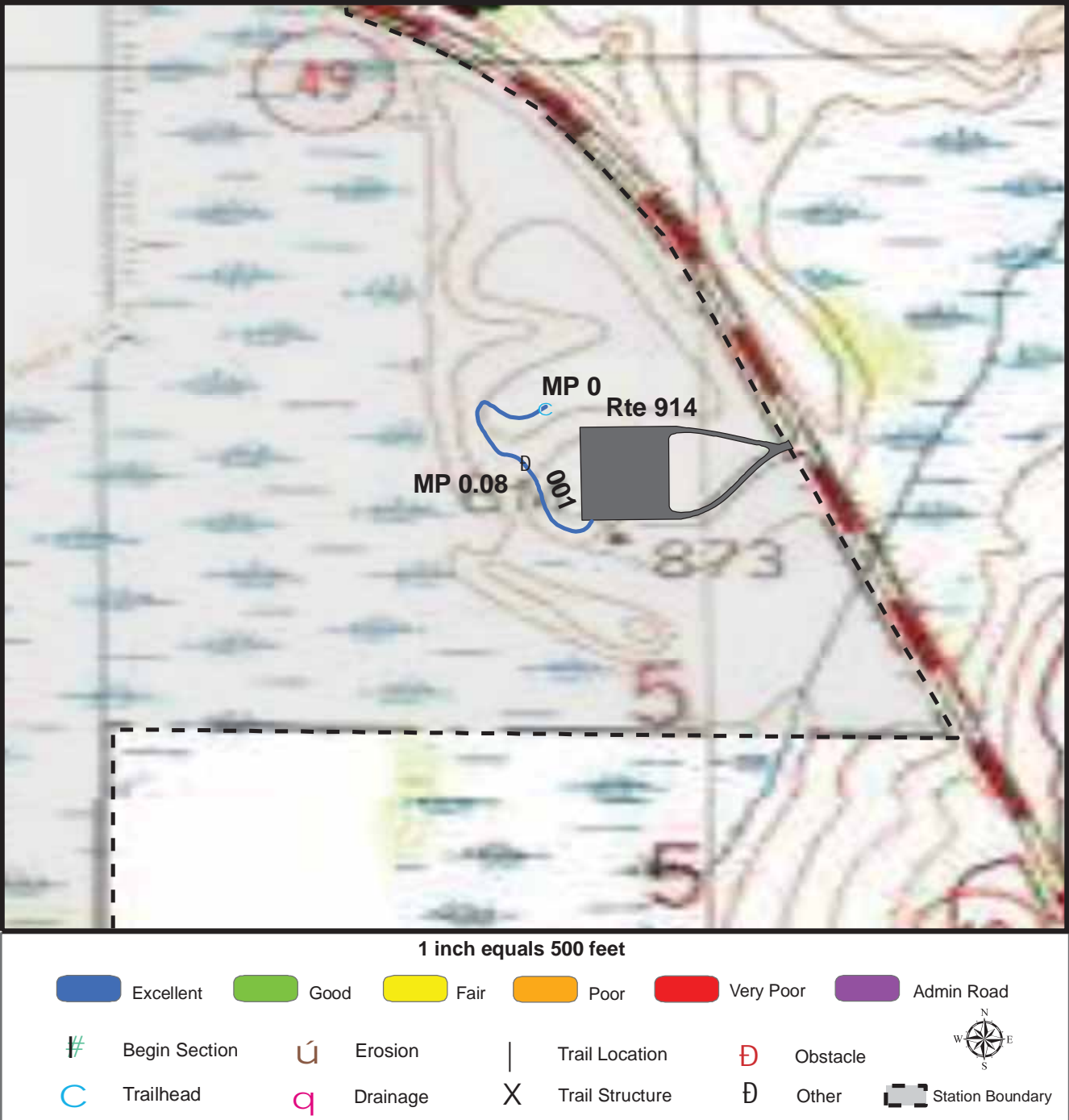
TOTAL LENGTH: 0.22 Miles

Section Number	001	002			
Section Length (miles)	0.14	0.08			
SAMMS Number	10041739	10041739			
Rating Date	8/22/2006	8/22/2006			
Trail Section Information					
Trail Class	TC4	TC5			
Surface Type	Native	Asphalt			
Surface Firmness	Hard	Paved			
Width (inches)	108	56			
Average Grade (%)	1.8	1.8			
Average X-slope (%)	2.6	2.6			
Trail Condition Information					
Deferred Maintenance	\$100	\$0			
CRV	\$34400	\$15000			
FCI	0.003	0			
Condition	Excellent	Excellent			

Trail Condition TOTALS

Deferred Maintenance	CRV	FCI	Condition
\$100	\$49400	0.002	Excellent

TRAIL DEFICIENCY



Trail Name: Viewing Area Trail

Refuge Name: Horicon NWR

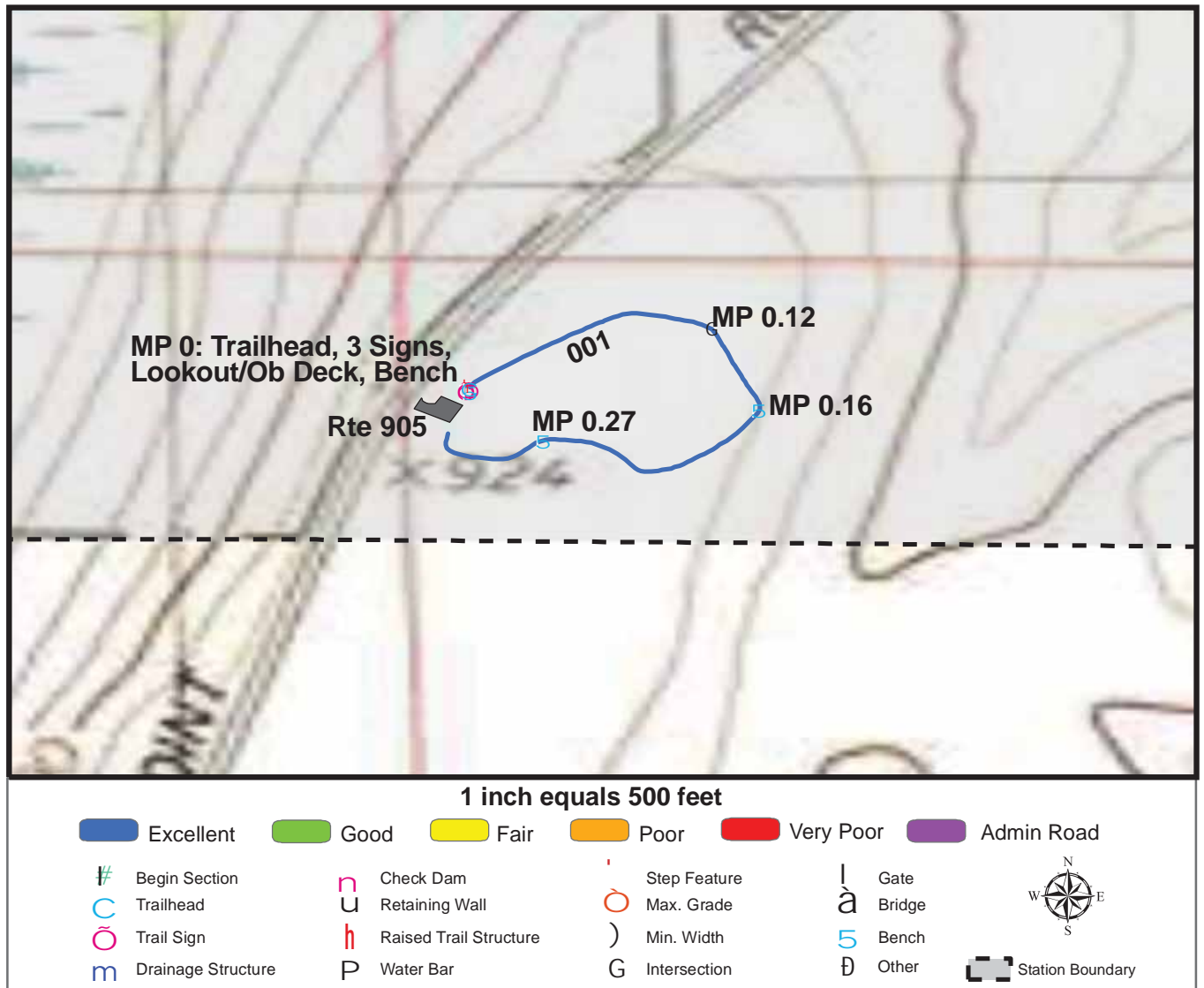
Trail Number: T402

Region: 3

TOTAL LENGTH: 0.22 Miles

Mile Post	0.08			
Section Number	001			
Photo Number	1711			
Deficiency	Other			
Action	Repair			
Item	Tread -sf			
Quantity	10			
Deferred Maintenance	\$100			

TRAIL CONDITION



Trail Name: Deer Track Trail

Refuge Name: Horicon NWR

Trail Number: T403

Region: 3

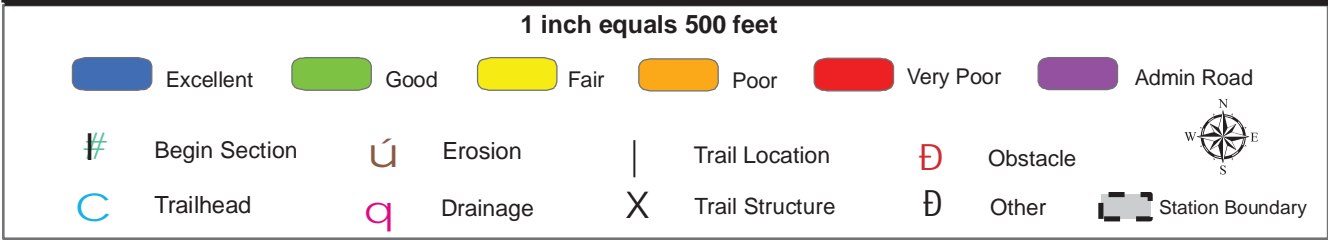
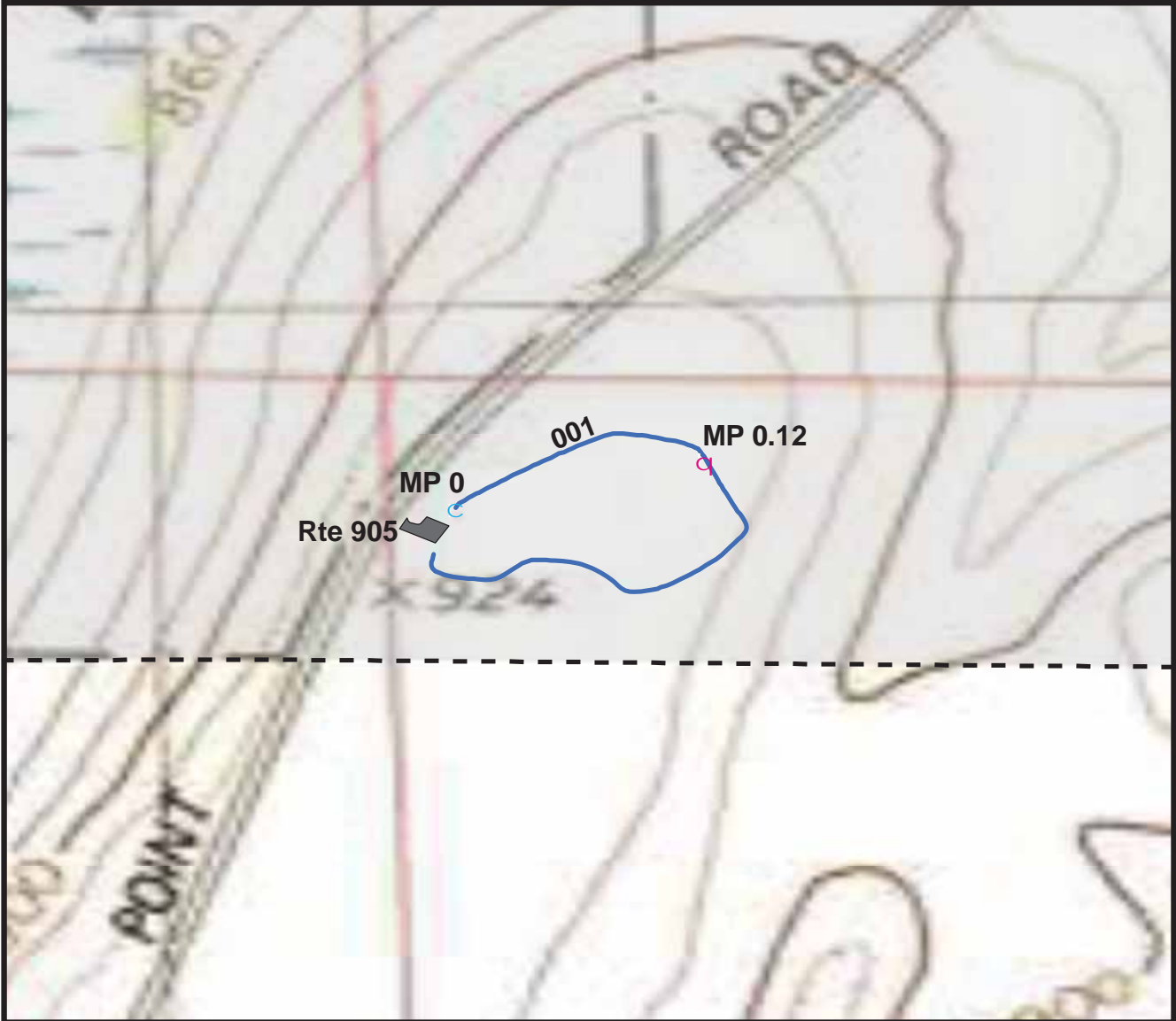
TOTAL LENGTH: 0.32 Miles

Section Number	001				
Section Length (miles)	0.32				
SAMMS Number	10011309				
Rating Date	8/22/2006				
Trail Section Information					
Trail Class	TC4				
Surface Type	Native				
Surface Firmness	Firm				
Width (inches)	98				
Average Grade (%)	0.8				
Average X-slope (%)	2.1				
Trail Condition Information					
Deferred Maintenance	\$100				
CRV	\$69200				
FCI	0.001				
Condition	Excellent				

Trail Condition TOTALS

Deferred Maintenance	CRV	FCI	Condition
\$100	\$69200	0.001	Excellent

TRAIL DEFICIENCY



Trail Name: Deer Track Trail

Refuge Name: Horicon NWR

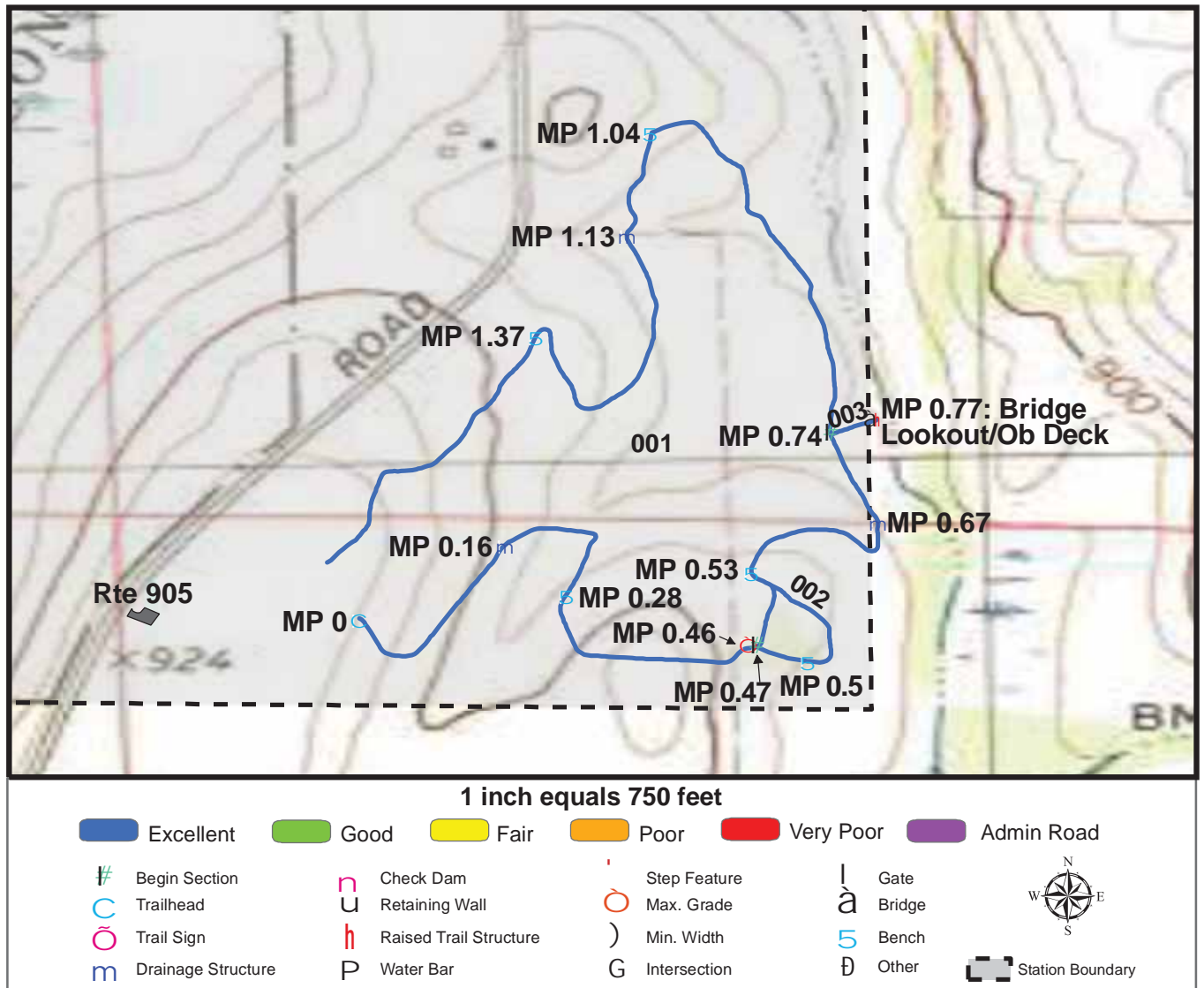
Trail Number: T403

Region: 3

TOTAL LENGTH: 0.32 Miles

Mile Post	0.12			
Section Number	001			
Photo Number	1720			
Deficiency	Drainage			
Action	Repair			
Item	Tread -sf			
Quantity	10			
Deferred Maintenance	\$100			

TRAIL CONDITION



Trail Name: Two Hawks Trail

Refuge Name: Horicon NWR

Trail Number: T404

Region: 3

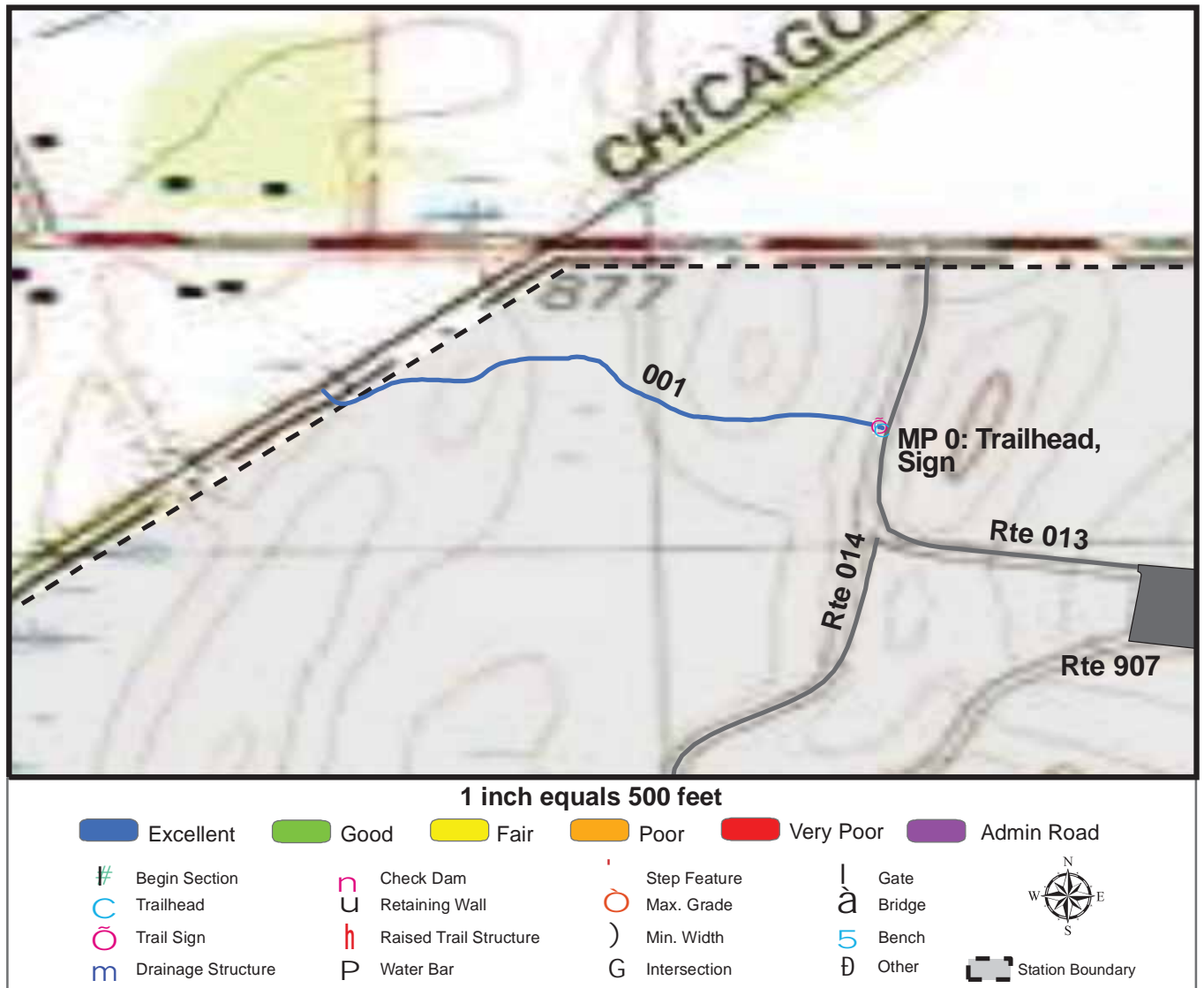
TOTAL LENGTH: 1.76 Miles

Section Number	001	002	003		
Section Length (miles)	1.61	0.12	0.03		
SAMMS Number	10011310	10011310	10011310		
Rating Date	8/22/2006	8/22/2006	8/22/2006		
Trail Section Information					
Trail Class	TC4	TC4	TC4		
Surface Type	Native	Native	Native		
Surface Firmness	Firm	Firm	Firm		
Width (inches)	108	96	84		
Average Grade (%)	2.3	2.3	2.3		
Average X-slope (%)	2.1	2.1	2.1		
Trail Condition Information					
Deferred Maintenance	\$0	\$0	\$0		
CRV	\$385200	\$25000	\$21800		
FCI	0	0	0		
Condition	Excellent	Excellent	Excellent		

Trail Condition TOTALS

Deferred Maintenance	CRV	FCI	Condition
\$0	\$432000	0	Excellent

TRAIL CONDITION



Trail Name: Connection to Wild Goose State Trail **Refuge Name:** Horicon NWR

Trail Number: T500

Region: 3

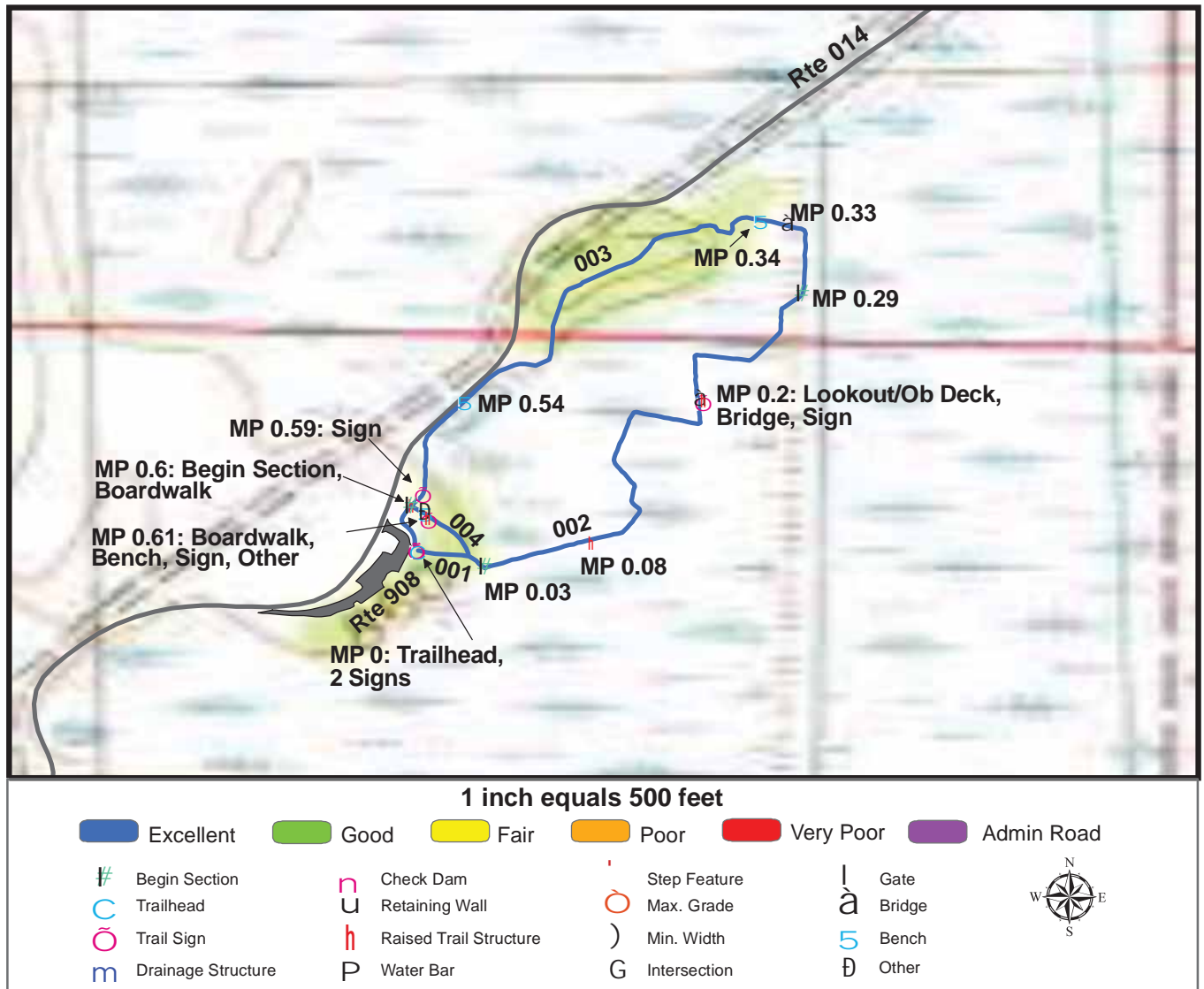
TOTAL LENGTH: 0.25 Miles

Section Number	001				
Section Length (miles)	0.25				
SAMMS Number	10041738				
Rating Date	8/22/2006				
Trail Section Information					
Trail Class	TC5				
Surface Type	Asphalt				
Surface Firmness	Paved				
Width (inches)	84				
Average Grade (%)	3.4				
Average X-slope (%)	0.6				
Trail Condition Information					
Deferred Maintenance	\$0				
CRV	\$64700				
FCI	0				
Condition	Excellent				

Trail Condition TOTALS

Deferred Maintenance	CRV	FCI	Condition
\$0	\$64700	0	Excellent

TRAIL CONDITION



Trail Name: Egret Trail

Refuge Name: Horicon NWR

Trail Number: T501

Region: 3

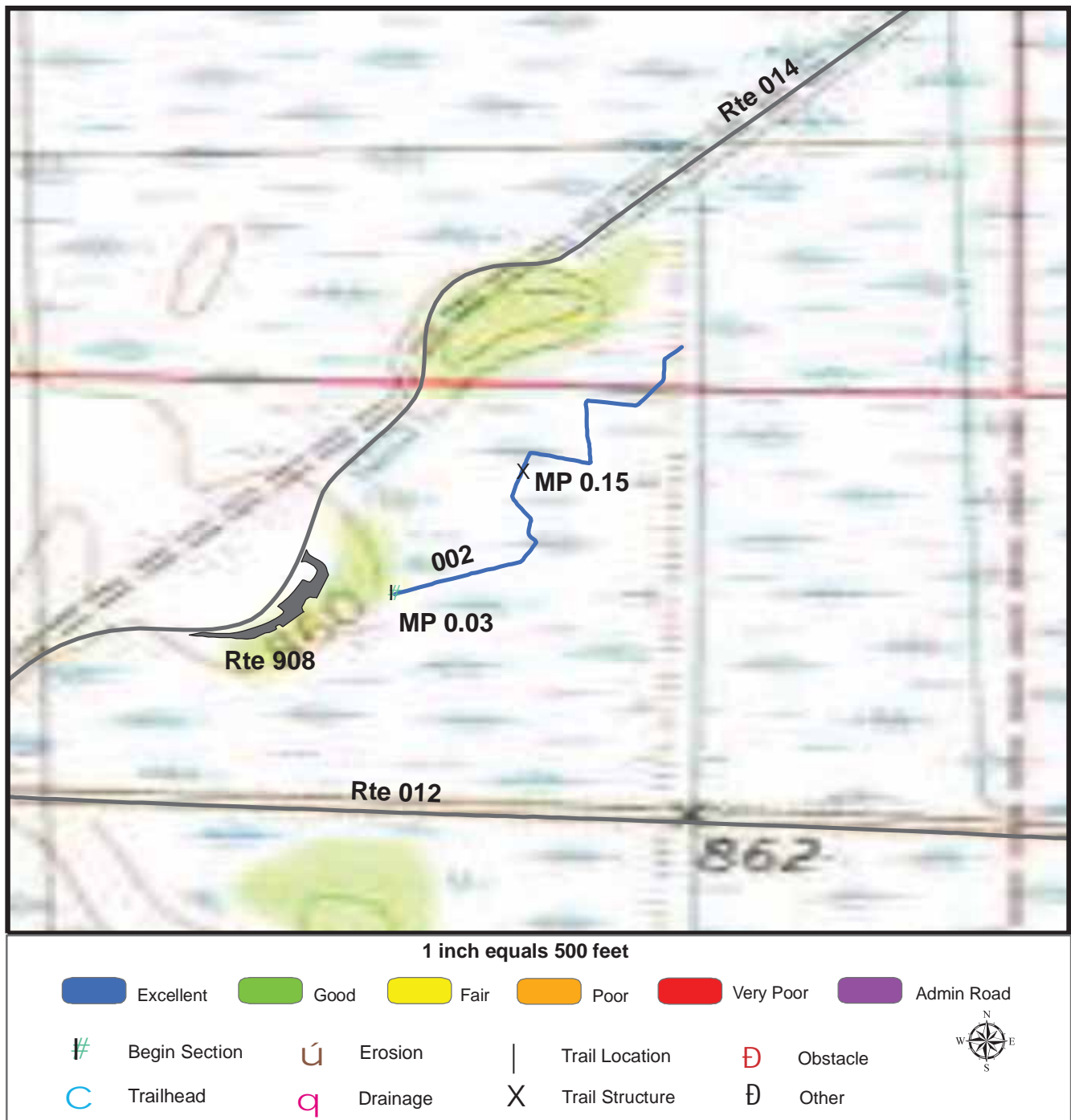
TOTAL LENGTH: 0.66 Miles

Section Number	001	002	003	004	
Section Length (miles)	0.03	0.26	0.33	0.04	
SAMMS Number	10011308	10011308	10011308	10011308	
Rating Date	8/22/2006	8/22/2006	8/22/2006	8/22/2006	
Trail Section Information					
Trail Class	TC5	TC5	TC4	TC4	
Surface Type	Asphalt	Asphalt	Gravel	Gravel	
Surface Firmness	Paved	Paved	Paved	Hard	
Width (inches)	80	96	96	60	
Average Grade (%)	3.3	3.3	3.3	3.3	
Average X-slope (%)	1.5	1.5	1.5	1.5	
Trail Condition Information					
Deferred Maintenance	\$0	\$100	\$0	\$0	
CRV	\$7300	\$103200	\$113200	\$6200	
FCI	0	0.001	0	0	
Condition	Excellent	Excellent	Excellent	Excellent	

Trail Condition TOTALS

Deferred Maintenance	CRV	FCI	Condition
\$100	\$229900	0	Excellent

TRAIL DEFICIENCY



Trail Name: Egret Trail

Refuge Name: Horicon NWR

Trail Number: T501

Region: 3

TOTAL LENGTH: 0.66 Miles

Mile Post	0.15			
Section Number	002			
Photo Number	1689			
Deficiency	Trail Structure			
Action	Replace			
Item	Boardwalk -lf			
Quantity	1			
Deferred Maintenance	\$100			

PHOTOGRAPHIC SHEET

TRAIL NUMBER: **T400**

STATION: Horicon NWR

DATE: 8/22/2006



Photo # 1661 - MP 0.0 - Trailhead

TRAIL NUMBER: **T400**

STATION: Horicon NWR

DATE: 8/22/2006



Photo # 1662-1664 - MP 0.0 - Sign

PHOTOGRAPHIC SHEET

TRAIL NUMBER: **T400**
STATION: Horicon NWR
DATE: 8/22/2006



Photo # 1665 - MP 0.01 - Sign (Grouped features)

TRAIL NUMBER: **T400**
STATION: Horicon NWR
DATE: 8/22/2006



Photo # 1666 - MP 0.72 - Sign

PHOTOGRAPHIC SHEET

TRAIL NUMBER: **T400**
STATION: Horicon NWR
DATE: 8/22/2006



Photo # 1667 - MP 0.95 - Sign (Grouped features)

TRAIL NUMBER: **T400**
STATION: Horicon NWR
DATE: 8/22/2006



Photo # 1668 - MP 1.1 - Drainage Deficiency

PHOTOGRAPHIC SHEET

TRAIL NUMBER: **T400**
STATION: Horicon NWR
DATE: 8/22/2006



Photo # 1669 - MP 1.36 - Boardwalk

TRAIL NUMBER: **T400**
STATION: Horicon NWR
DATE: 8/22/2006



Photo # 1670-1671 - MP 1.45 - Drainage Deficiency

PHOTOGRAPHIC SHEET

TRAIL NUMBER: **T400**

STATION: Horicon NWR

DATE: 8/22/2006



Photo # 1675 - MP 1.79 - Boardwalk

TRAIL NUMBER: **T400**

STATION: Horicon NWR

DATE: 8/22/2006



Photo # 1677 - MP 1.92 - Erosion Deficiency

PHOTOGRAPHIC SHEET

TRAIL NUMBER: **T401**
STATION: Horicon NWR
DATE: 8/22/2006



Photo # 1680 - MP 0.0 - Trailhead

TRAIL NUMBER: **T401**
STATION: Horicon NWR
DATE: 8/22/2006



Photo # 1681 - MP 0.01 - Sign (Grouped features)

PHOTOGRAPHIC SHEET

TRAIL NUMBER: **T401**
STATION: Horicon NWR
DATE: 8/22/2006



Photo # 1682 - MP 0.02 - Sign (Grouped features)

TRAIL NUMBER: **T401**
STATION: Horicon NWR
DATE: 8/22/2006



Photo # 1683 - MP 0.08 - Boardwalk

PHOTOGRAPHIC SHEET

TRAIL NUMBER: **T401**
STATION: Horicon NWR
DATE: 8/22/2006



Photo # 1684 - MP 0.41 - Begin Section 002

TRAIL NUMBER: **T402**
STATION: Horicon NWR
DATE: 8/22/2006



Photo # 1710 - MP 0.0 - Trailhead

PHOTOGRAPHIC SHEET

TRAIL NUMBER: **T402**

STATION: Horicon NWR

DATE: 8/22/2006



Photo # 1709 - MP 0.0 - Boardwalk

TRAIL NUMBER: **T402**

STATION: Horicon NWR

DATE: 8/22/2006



Photo # 1711 - MP 0.08 - Other Deficiency

PHOTOGRAPHIC SHEET

TRAIL NUMBER: **T402**
STATION: Horicon NWR
DATE: 8/22/2006



Photo # 1712 - MP 0.14 - Begin Section 002

TRAIL NUMBER: **T402**
STATION: Horicon NWR
DATE: 8/22/2006



Photo # 1714 - MP 0.21 - Sign

PHOTOGRAPHIC SHEET

TRAIL NUMBER: **T402**
STATION: Horicon NWR
DATE: 8/22/2006



Photo # 1699-1708 - MP 0.22 - Sign

TRAIL NUMBER: **T402**
STATION: Horicon NWR
DATE: 8/22/2006



Photo # 1713 - MP 0.22 - Boardwalk

PHOTOGRAPHIC SHEET

TRAIL NUMBER: **T403**

STATION: Horicon NWR

DATE: 8/22/2006



Photo # 1719 - MP 0.0 - Trailhead

TRAIL NUMBER: **T403**

STATION: Horicon NWR

DATE: 8/22/2006



Photo # 1715-6 - MP 0.0 - Sign

PHOTOGRAPHIC SHEET

TRAIL NUMBER: **T403**
STATION: Horicon NWR
DATE: 8/22/2006



Photo # 1717 - MP 0.0 - Sign

TRAIL NUMBER: **T403**
STATION: Horicon NWR
DATE: 8/22/2006



Photo # 1718 - MP 0.0 - Sign

PHOTOGRAPHIC SHEET

TRAIL NUMBER: **T403**

STATION: Horicon NWR

DATE: 8/22/2006



Photo # 1720 - MP 0.12 - Drainage Deficiency

TRAIL NUMBER: **T404**

STATION: Horicon NWR

DATE: 8/22/2006



Photo # 1721 - MP 0.0 - Trailhead

PHOTOGRAPHIC SHEET

TRAIL NUMBER: **T404**

STATION: Horicon NWR

DATE: 8/22/2006



Photo # 1722 - MP 0.47 - Begin Section 002

TRAIL NUMBER: **T404**

STATION: Horicon NWR

DATE: 8/22/2006



Photo # 1723 - MP 0.74 - Begin Section 003

PHOTOGRAPHIC SHEET

TRAIL NUMBER: **T404**

STATION: Horicon NWR

DATE: 8/22/2006



Photo # 1724 - MP 0.77 - Bridge

TRAIL NUMBER: **T500**

STATION: Horicon NWR

DATE: 8/22/2006



Photo # 1678 - MP 0.0 - Trailhead

PHOTOGRAPHIC SHEET

TRAIL NUMBER: **T500**

STATION: Horicon NWR

DATE: 8/22/2006



Photo # 1679 - MP 0.0 - Sign

TRAIL NUMBER: **T501**

STATION: Horicon NWR

DATE: 8/22/2006



Photo # 1686 - MP 0.0 - Trailhead

PHOTOGRAPHIC SHEET

TRAIL NUMBER: **T501**
STATION: Horicon NWR
DATE: 8/22/2006



Photo # 1685 - MP 0.0 - Sign

TRAIL NUMBER: **T501**
STATION: Horicon NWR
DATE: 8/22/2006



Photo # 1687 - MP 0.0 - Sign

PHOTOGRAPHIC SHEET

TRAIL NUMBER: **T501**
STATION: Horicon NWR
DATE: 8/22/2006



Photo # 1688 - MP 0.03 - Begin Section 002

TRAIL NUMBER: **T501**
STATION: Horicon NWR
DATE: 8/22/2006



Photo # 1689 - MP 0.15 - Trail Structure Deficiency

PHOTOGRAPHIC SHEET

TRAIL NUMBER: **T501**
STATION: Horicon NWR
DATE: 8/22/2006



Photo # 1690 - MP 0.2 - Bridge

TRAIL NUMBER: **T501**
STATION: Horicon NWR
DATE: 8/22/2006



Photo # 1691 - MP 0.2 - Sign

PHOTOGRAPHIC SHEET

TRAIL NUMBER: **T501**
STATION: Horicon NWR
DATE: 8/22/2006



Photo # 1692 - MP 0.29 - Begin Section 003

TRAIL NUMBER: **T501**
STATION: Horicon NWR
DATE: 8/22/2006



Photo # 1693 - MP 0.33 - Bridge

PHOTOGRAPHIC SHEET

TRAIL NUMBER: **T501**
STATION: Horicon NWR
DATE: 8/22/2006



Photo # 1694 - MP 0.59 - Sign (Grouped Feature)

TRAIL NUMBER: **T501**
STATION: Horicon NWR
DATE: 8/22/2006



Photo # 1696 - MP 0.6 - Begin Section 004

PHOTOGRAPHIC SHEET

TRAIL NUMBER: **T501**
STATION: Horicon NWR
DATE: 8/22/2006



Photo # 1697 - MP 0.6 - Boardwalk

TRAIL NUMBER: **T501**
STATION: Horicon NWR
DATE: 8/22/2006



Photo # 1695 - MP 0.61 - Sign

PHOTOGRAPHIC SHEET

TRAIL NUMBER: T501

STATION: Horicon NWR

DATE: 8/22/2006



Photo # 1698 - MP 0.61 - Boardwalk

The Trail Inventory of St. Croix National Wildlife Refuge New Richmond, Wisconsin



**Prepared By:
Federal Highway Administration
Central Federal Lands Highway Division
July 2006**



St. Croix NWR

Trail and Trail Feature Summaries

Trail Miles and Percentages by Surface Type and Condition

Trail Surface Type	Mileage by Trail Condition												Total Miles
	Excellent		Good		Fair		Poor		Very Poor		Not Rated*		
	MILES	%	MILES	%	MILES	%	MILES	%	MILES	%	MILES	%	
Native		0%		0%		0%		0%		0%		0%	0.00
Gravel		0%		0%		0%		0%		0%		0%	0.00
Asphalt		0%		0%		0%		0%		0%		0%	0.00
Concrete		0%		0%		0%		0%		0%		0%	0.00
Turnpike		0%		0%		0%		0%		0%		0%	0.00
Boardwalk		0%		0%		0%		0%		0%		0%	0.00
Puncheon		0%		0%		0%		0%		0%		0%	0.00
Woodchips		0%		0%		0%		0%		0%		0%	0.00
Mowed		0%	0.87	100%		0%		0%		0%		0%	0.87
Admin Road		0%		0%		0%		0%		0%		0%	0.00
Other		0%		0%		0%		0%		0%		0%	0.00
Totals	0.00	0%	0.87	100%	0.00	0%	0.00	0%	0.00	0%	0.00	0%	0.87

Trail Miles and Percentages by Trail Classification and Condition

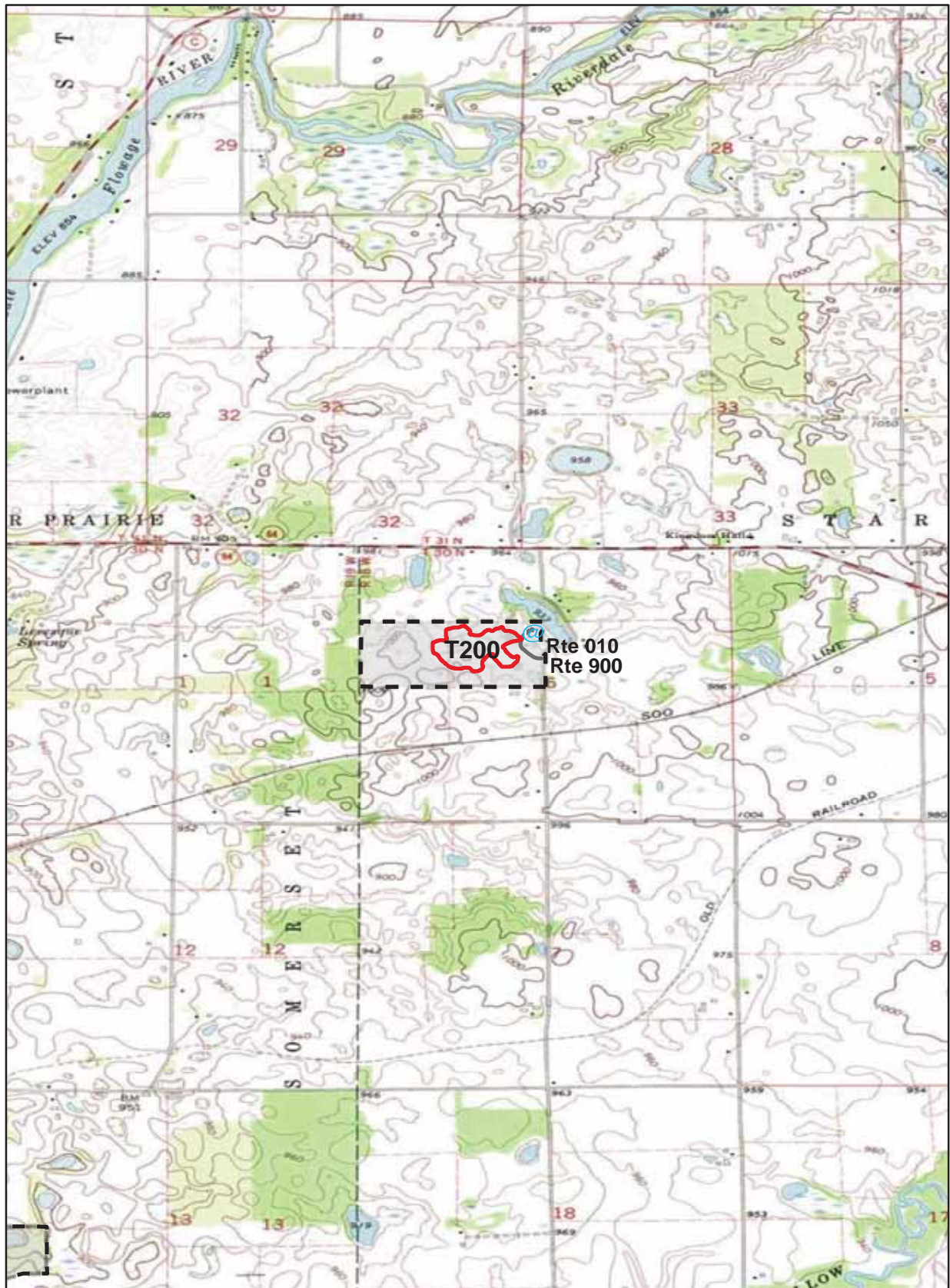
Trail Classificatio n	Mileage by Trail Condition												Total Miles
	Excellent		Good		Fair		Poor		Very Poor		Not Rated*		
	MILES	%	MILES	%	MILES	%	MILES	%	MILES	%	MILES	%	
TC1		0%		0%		0%		0%		0%		0%	0.00
TC2		0%	0.87	100%		0%		0%		0%		0%	0.87
TC3		0%		0%		0%		0%		0%		0%	0.00
TC4		0%		0%		0%		0%		0%		0%	0.00
TC5		0%		0%		0%		0%		0%		0%	0.00
Totals	0.00	0%	0.87	100%	0.00	0%	0.00	0%	0.00	0%	0.00	0%	0.87

* Admin Roads are included in the inventory but are not rated for condition.

Trail Features

Trail Number	Feature Type	Quantity	Grouped Feature	Milepost	Photo
T200	Sign	1	No	0.00	0681
sf-square feet lf-linear feet cf-cubic feet					

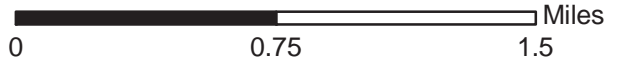
ST. CROIX NATIONAL WILDLIFE REFUGE TRAIL LOCATION MAP



Station Boundary



HQ/VC



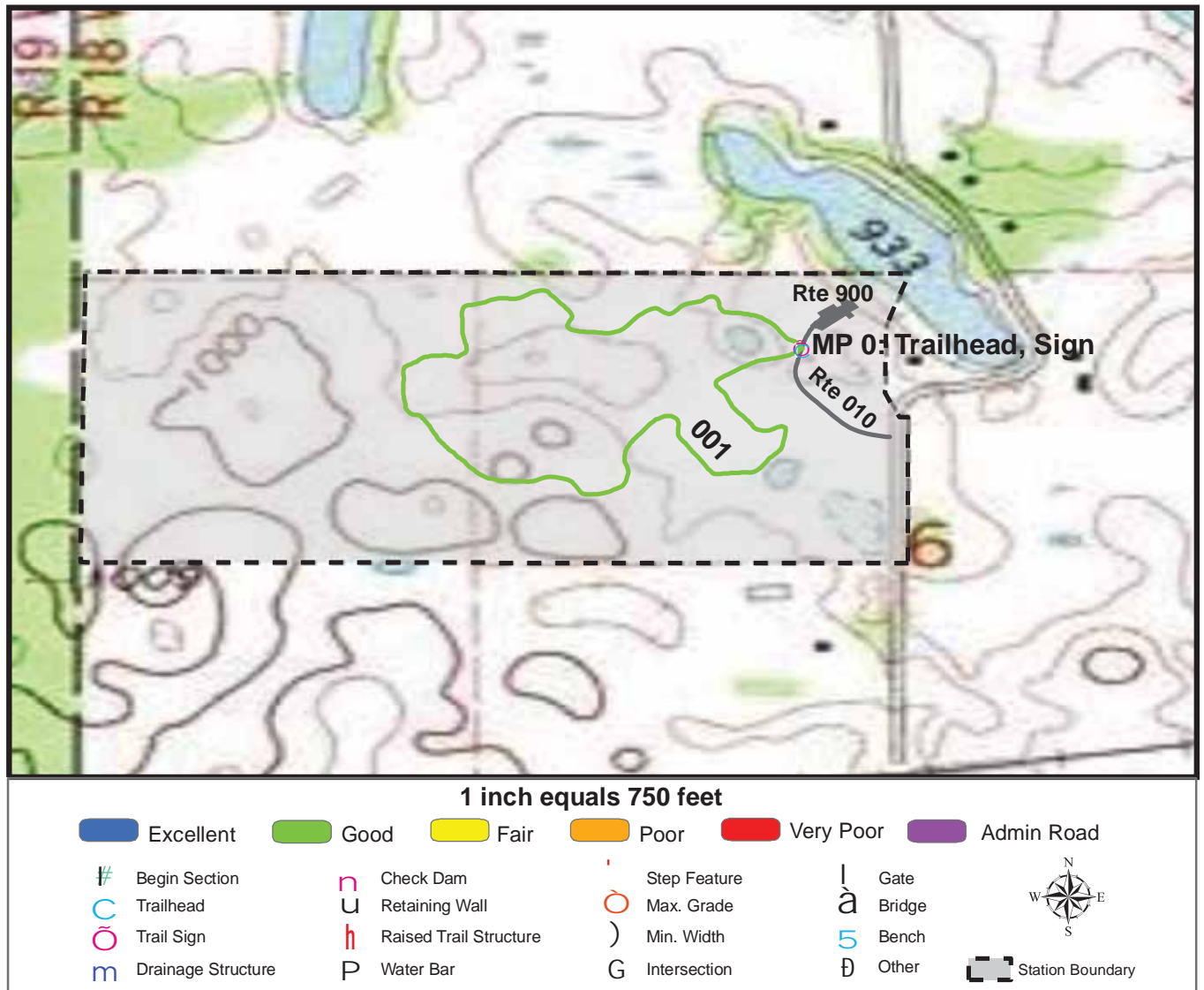
TRAILS ID

Station Name: St. Croix NWR

Org. Code: 32577

Trail #	Trail Name	Surface Type	SAMMS	Trail Mileage	Trail Description (Begin and End point of trail)
T200	Prairie Trail	Mowed	10011865	0.87	From Headquarters Parking Area (Rte 900) to Headquarters Parking Area (Rte 900)

TRAIL CONDITION



Trail Name: Prairie Trail

Refuge Name: St. Croix WMD

Trail Number: T200

Region: 3

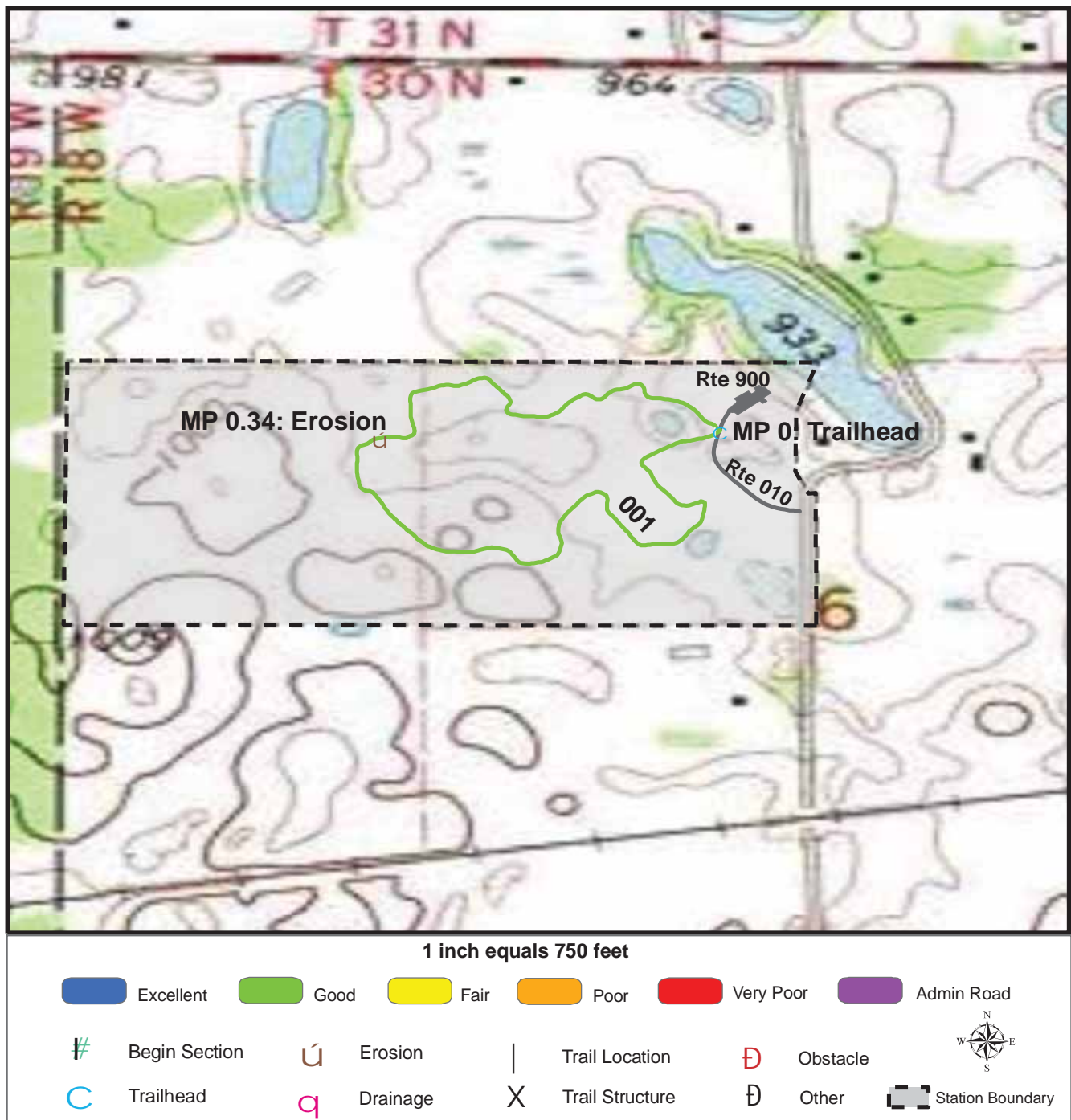
TOTAL LENGTH: 0.87 Miles

Section Number	001				
Section Length (miles)	0.87				
SAMMS Number	10011865				
Rating Date	7/21/2006				
Trail Section Information					
Trail Class	TC2				
Surface Type	Mowed				
Surface Firmness	Firm				
Width (inches)	60				
Average Grade (%)	3.6				
Average X-slope (%)	7.4				
Trail Condition Information					
Deferred Maintenance	\$400				
CRV	\$28100				
FCI	0.014				
Condition	Good				

Trail Condition TOTALS

Deferred Maintenance	CRV	FCI	Condition
\$400	\$28100	0.014	Good

TRAIL DEFICIENCY



Trail Name: Prairie Trail

Refuge Name: St. Croix WMD

Trail Number: T200

Region: 3

TOTAL LENGTH: 0.87 Miles

Mile Post	0.34			
Section Number	001			
Photo Number	0682			
Deficiency	Erosion			
Action	Repair			
Item	Tread -sf			
Quantity	500			
Deferred Maintenance	\$400			

PHOTOGRAPHIC SHEET

TRAIL NUMBER: **T200**
STATION: St. Croix WMD
DATE: 7/21/2006



Photo # 0680 - MP 0.0 - Trailhead

TRAIL NUMBER: **T200**
STATION: St. Croix WMD
DATE: 7/21/2006



Photo # 0681 - MP 0.0 - Sign

PHOTOGRAPHIC SHEET

TRAIL NUMBER: **T200**

STATION: St. Croix WMD

DATE: 7/21/2006



Photo # 0682 - MP 0.34 - Erosion Deficiency

The Trail Inventory of Trempealeau National Wildlife Refuge Trempealeau, Wisconsin



**Prepared By:
Federal Highway Administration
Central Federal Lands Highway Division
July 2006**



Trempealeau NWR

Trail and Trail Feature Summaries

Trail Miles and Percentages by Surface Type and Condition

Trail Surface Type	Mileage by Trail Condition												Total Miles
	Excellent		Good		Fair		Poor		Very Poor		Not Rated*		
	MILES	%	MILES	%	MILES	%	MILES	%	MILES	%	MILES	%	
Native		0%		0%		0%		0%		0%		0%	0.00
Gravel		0%		0%		0%		0%		0%		0%	0.00
Asphalt		0%	0.04	0%		0%		0%		0%		0%	0.04
Concrete		0%		0%		0%		0%		0%		0%	0.00
Turnpike		0%		0%		0%		0%		0%		0%	0.00
Boardwalk		0%		0%		0%		0%		0%		0%	0.00
Puncheon		0%		0%		0%		0%		0%		0%	0.00
Woodchips		0%		0%		0%		0%		0%		0%	0.00
Mowed	1.70	21%		0%		0%		0%		0%		0%	1.70
Admin Road		0%		0%		0%		0%		0%	6.46	79%	6.46
Other		0%		0%		0%		0%		0%		0%	0.00
Totals	1.70	21%	0.04	0%	0.00	0%	0.00	0%	0.00	0%	6.46	79%	8.20

Trail Miles and Percentages by Trail Classification and Condition

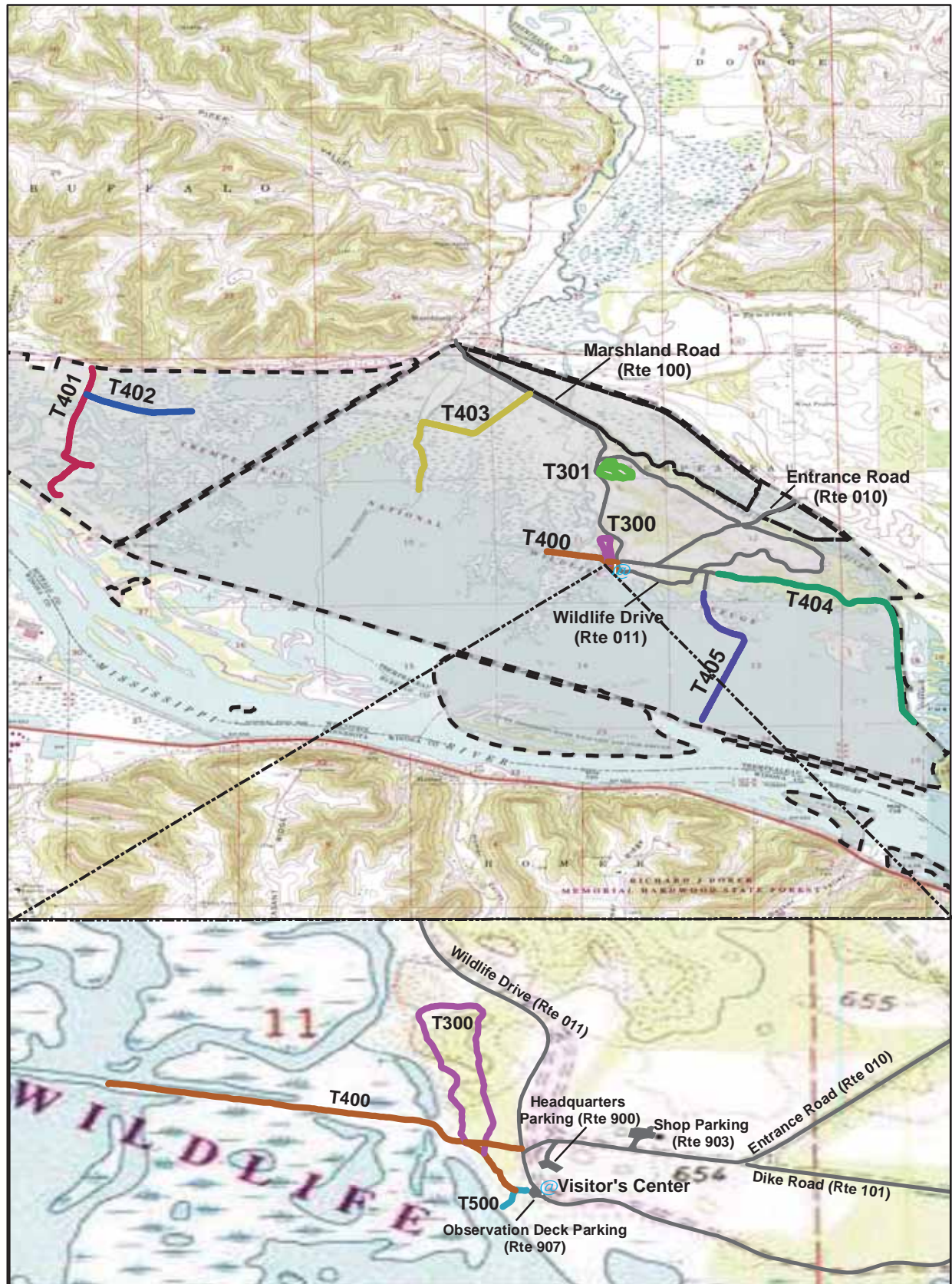
Trail Classification	Mileage by Trail Condition												Total Miles
	Excellent		Good		Fair		Poor		Very Poor		Not Rated*		
	MILES	%	MILES	%	MILES	%	MILES	%	MILES	%	MILES	%	
TC1		0%		0%		0%		0%		0%		0%	0.00
TC2		0%		0%		0%		0%		0%		0%	0.00
TC3	1.18	14%		0%		0%		0%		0%		0%	1.18
TC4	0.52	6%		0%		0%		0%		0%	6.46	79%	6.98
TC5		0%	0.04	0%		0%		0%		0%		0%	0.04
Totals	1.70	21%	0.04	0%	0.00	0%	0.00	0%	0.00	0%	6.46	79%	8.20

* Admin Roads are included in the inventory but are not rated for condition.

Trail Features

Trail Number	Feature Type	Quantity	Grouped Feature	Milepost	Photo
T300	Sign	6	Yes	0.01	0699
T301	Sign	7	Yes	0.01	0703
T301	Bench	1	No	0.16	N/A
T301	Bench	1	No	0.27	N/A
T301	Bench	1	No	0.39	N/A
T301	Bench	1	No	0.26	N/A
T400	Sign	1	No	0.01	0691
T400	Sign	1	No	0.03	0692
T400	Sign	1	No	0.08	0693
T401	Sign	1	No	0.00	0706
T401	Gate	1	No	0.00	0706
T401	Boardwalk -lf	50	No	0.92	0707
T402	Gate	1	No	0.03	0709
T402	Other	1	No	0.64	N/A
T403	Sign	1	No	0.00	0714
T403	Gate	1	No	0.00	N/A
T403	Sign	1	No	0.82	0715
T404	Sign	4	No	0.00	0720
T404	Gate	1	No	0.00	0720
T404	Other	1	No	2.04	N/A
T405	Sign	2	No	0.00	0725
T405	Sign	1	No	0.03	0726
T405	Lookout/Ob Deck	1	No	0.03	N/A
T405	Sign	1	No	0.06	0728
T405	Gate	1	No	0.06	N/A
T500	Sign	1	No	0.00	0685
T500	Sign	1	No	0.01	0686
T500	Lookout/Ob Deck	1	No	0.04	N/A
T500	Sign	1	No	0.03	0687
sf-square feet					
lf-linear feet					
cf-cubic feet					

TREMPEALEAU NATIONAL WILDLIFE REFUGE TRAIL LOCATION MAP



Station Boundary

HQ/VC

Miles
0 1 2

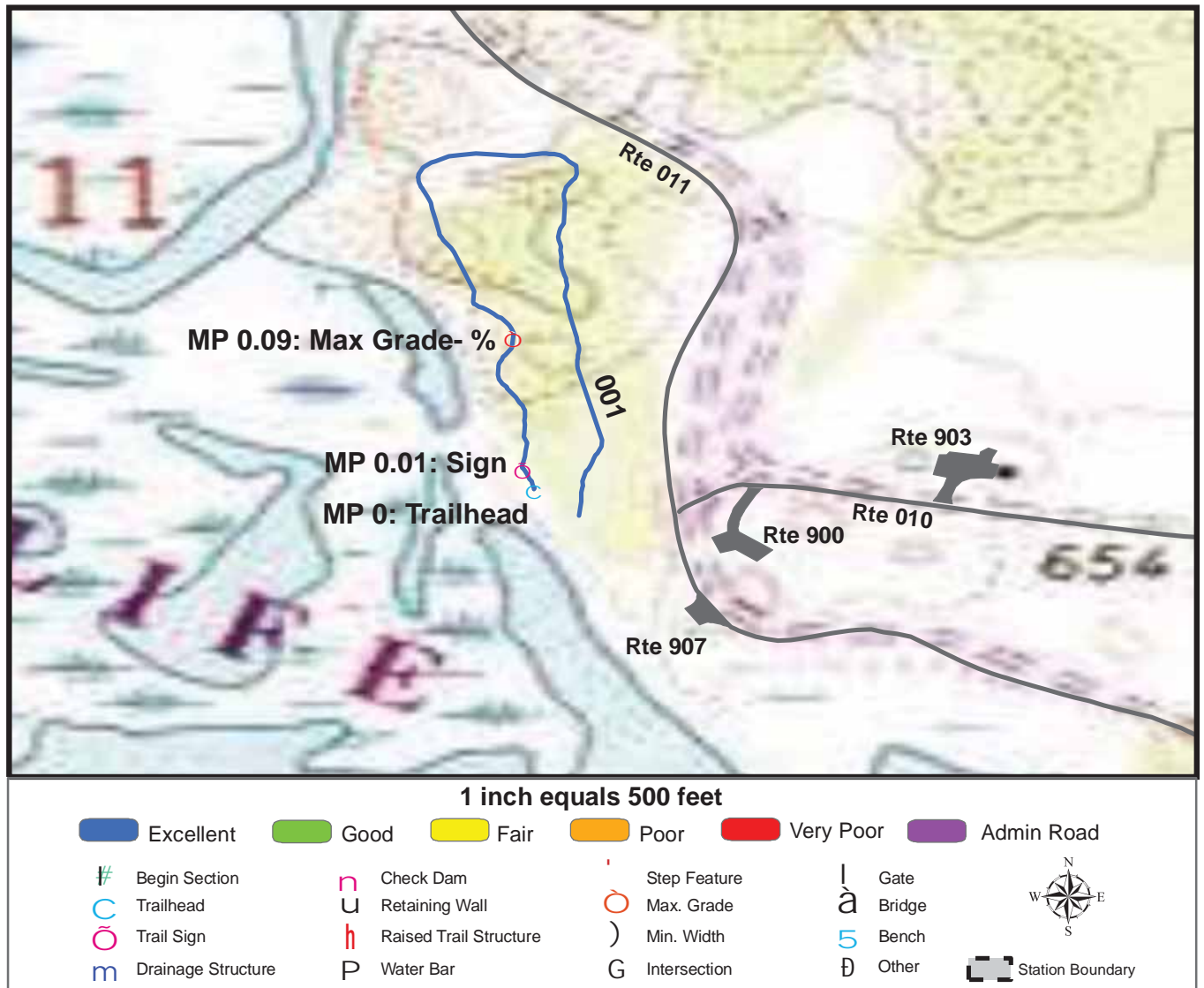
TRAILS ID

Station Name: Trempealeau NWR

Org. Code: 32578

Trail #	Trail Name	Surface Type	SAMMS	Trail Mileage	Trail Description (Begin and End point of trail)
T300	Nature Trail	Mowed	N/A	0.47	From Pine Creek Dike Trail to back to Pine Creek Dike Trail
T301	Prairie View Loop Trail	Mowed	10011913	0.71	From Prairie View Parking (Rte 906) to end of loop
T400	Pine Creek Dike Trail	Mowed	10011894	0.52	From Deck Trail (T500) to end of Sec 001
T401	River Bottom Road	Admin Road	10044399	1.27	From River Bottoms Parking Area (Rte 912) to End of Sec 002
T402	Oxbow Dike	Admin Road	10011922	0.64	From River Bottom Road to End of Sec 001
T403	Delta Road	Admin Road	10011890	1.33	From Marshland Road (Rte 100) to End of Sec 001
T404	Lower Diversion Dike	Admin Road	10011893	2.04	From Dike Road Parking Area (Rte 904) to End of Sec 001
T405	Kieps Island Dike	Admin Road	10011896	1.18	From Boat Landing Parking Area (Rte 905) to End of Sec 001
T500	Deck Trail	Asphalt	10011910	0.04	From Visitors center Parking Lot (Rte 907) to Lookout/Observation Deck

TRAIL CONDITION



Trail Name: Nature Trail

Refuge Name: Trempealeau NWR

Trail Number: T300

Region: 3

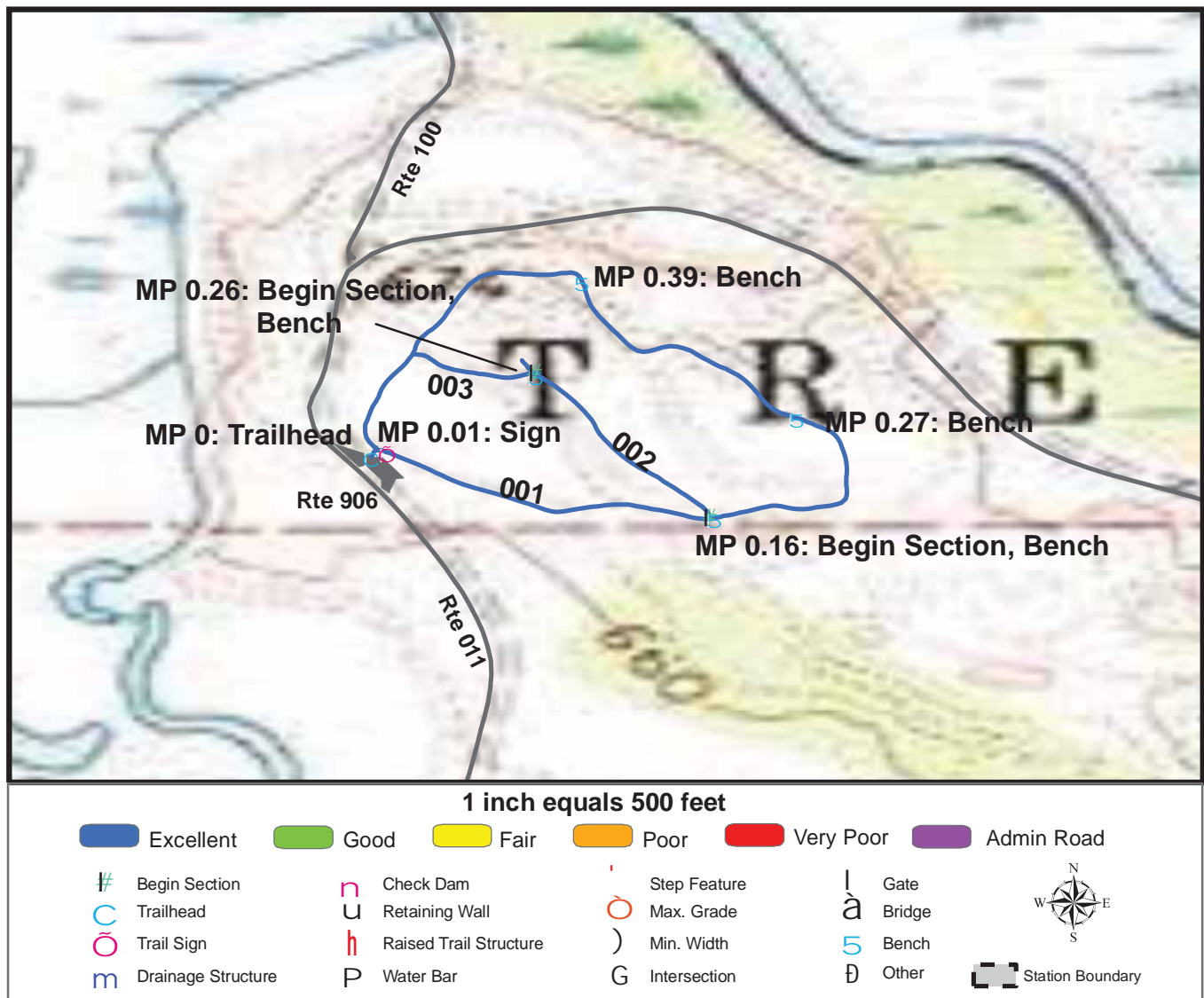
TOTAL LENGTH: 0.47 Miles

Section Number	001				
Section Length (miles)	0.47				
SAMMS Number	N/A				
Rating Date	7/21/2006				
Trail Section Information					
Trail Class	TC3				
Surface Type	Mowed				
Surface Firmness	Firm				
Width (inches)	72				
Average Grade (%)	15.1				
Average X-slope (%)	1.5				
Trail Condition Information					
Deferred Maintenance	\$0				
CRV	\$13400				
FCI	0				
Condition	Excellent				

Trail Condition TOTALS

Deferred Maintenance	CRV	FCI	Condition
\$0	\$13400	0	Excellent

TRAIL CONDITION



Trail Name: Prairie View Loop Trail

Refuge Name: Trempealeau NWR

Trail Number: T301

Region: 3

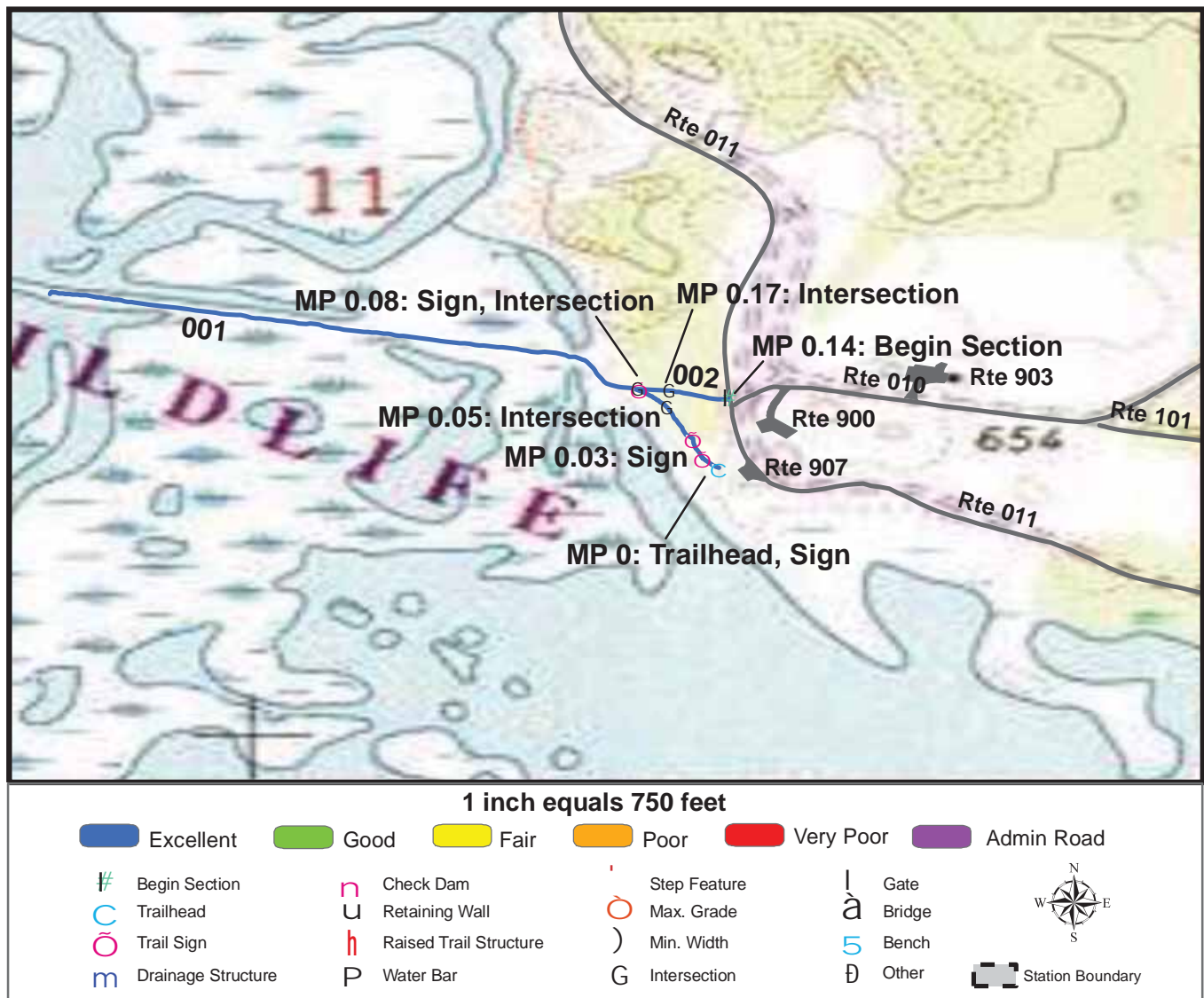
TOTAL LENGTH: 0.71 Miles

Section Number	001	002	003		
Section Length (miles)	0.54	0.12	0.05		
SAMMS Number	10011913	10011913	10011913		
Rating Date	7/21/2006	7/21/2006	7/21/2006		
Trail Section Information					
Trail Class	TC3	TC3	TC3		
Surface Type	Mowed	Mowed	Mowed		
Surface Firmness	Firm	Firm	Firm		
Width (inches)	96	96	96		
Average Grade (%)	3.5	3.5	3.5		
Average X-slope (%)	2.5	2.5	2.5		
Trail Condition Information					
Deferred Maintenance	\$0	\$0	\$0		
CRV	\$20700	\$4500	\$2000		
FCI	0	0	0		
Condition	Excellent	Excellent	Excellent		

Trail Condition TOTALS

Deferred Maintenance	CRV	FCI	Condition
\$0	\$27200	0	Excellent

TRAIL CONDITION



Trail Name: Pine Creek Dike Trail

Refuge Name: Trempealeau NWR

Trail Number: T400

Region: 3

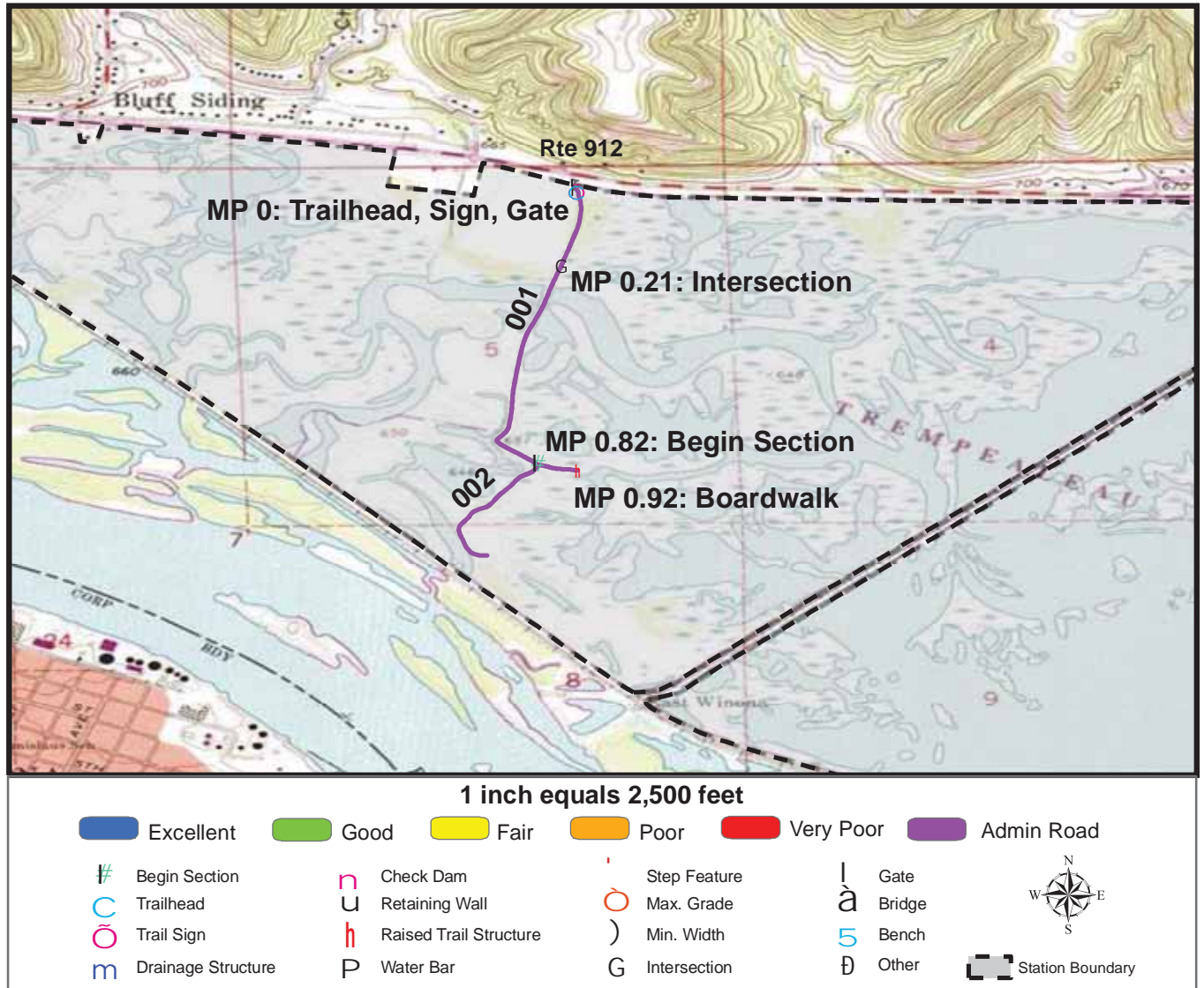
TOTAL LENGTH: 0.52 Miles

Section Number	001	002			
Section Length (miles)	0.46	0.06			
SAMMS Number	10011894	10011894			
Rating Date	7/21/2006	7/21/2006			
Trail Section Information					
Trail Class	TC4	TC4			
Surface Type	Mowed	Mowed			
Surface Firmness	Firm	Firm			
Width (inches)	96	72			
Average Grade (%)	2.5	2.5			
Average X-slope (%)	2.9	2.9			
Trail Condition Information					
Deferred Maintenance	\$0	\$0			
CRV	\$17500	\$1600			
FCI	0	0			
Condition	Excellent	Excellent			

Trail Condition TOTALS

Deferred Maintenance	CRV	FCI	Condition
\$0	\$19100	0	Excellent

TRAIL CONDITION



Trail Name: River Bottom Road

Refuge Name: Trempealeau NWR

Trail Number: T401

Region: 3

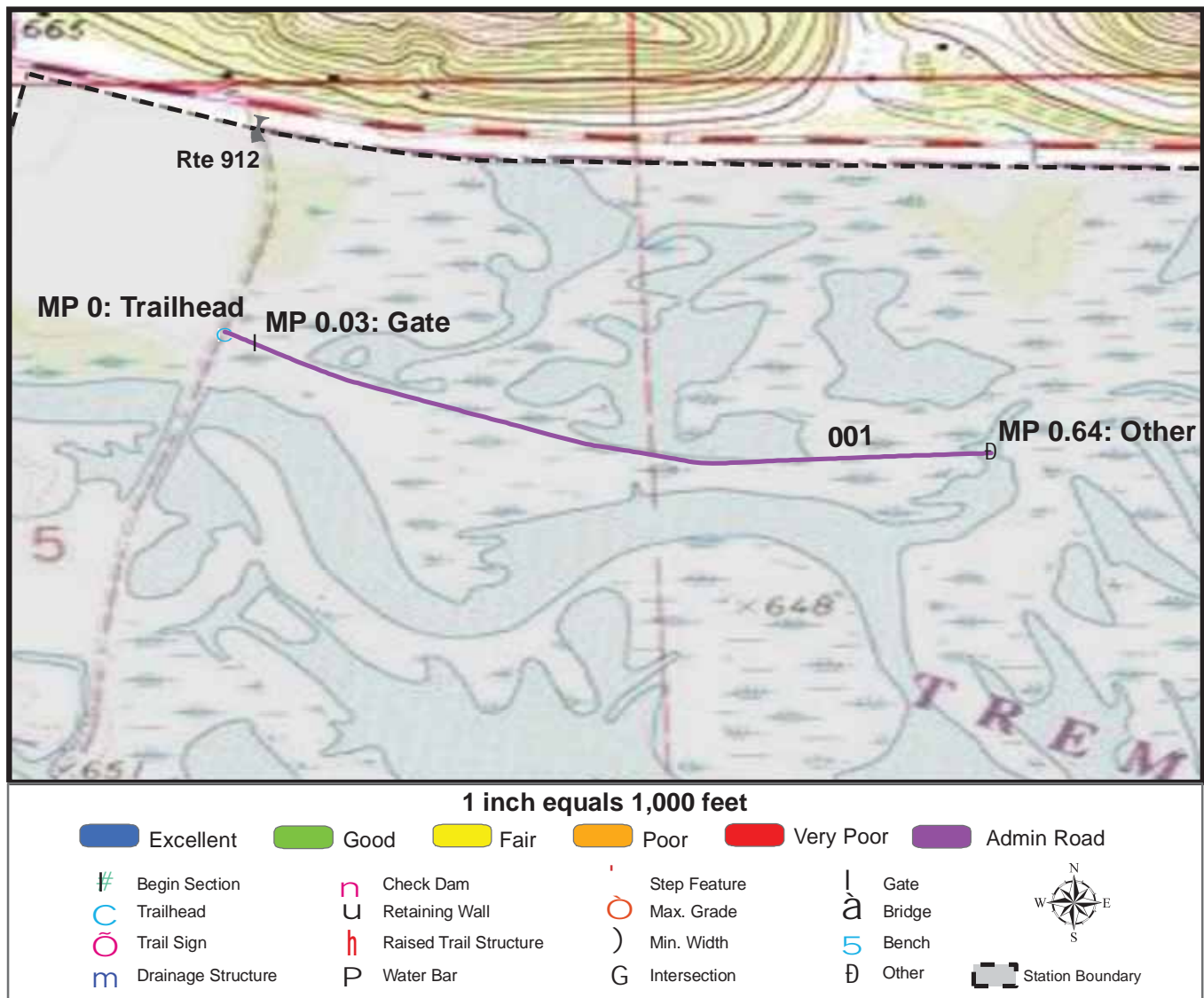
TOTAL LENGTH: 1.27 Miles

Section Number	001	002			
Section Length (miles)	0.92	0.35			
SAMMS Number	10044399	10044399			
Rating Date	7/22/2006	7/22/2006			
Trail Section Information					
Trail Class	TC4	TC4			
Surface Type	Admin Road	Admin Road			
Surface Firmness	Hard	Hard			
Width (inches)	115	115			
Average Grade (%)	0	0			
Average X-slope (%)	0	0			
Trail Condition Information					
Deferred Maintenance	\$0	\$0			
CRV	\$0	\$0			
FCI	0	0			
Condition	Not Rated	Not Rated			

Trail Condition TOTALS

Deferred Maintenance	CRV	FCI	Condition
\$0	\$0	0	Not Rated

TRAIL CONDITION



Trail Name: Oxbow Dike

Refuge Name: Trempealeau NWR

Trail Number: T402

Region: 3

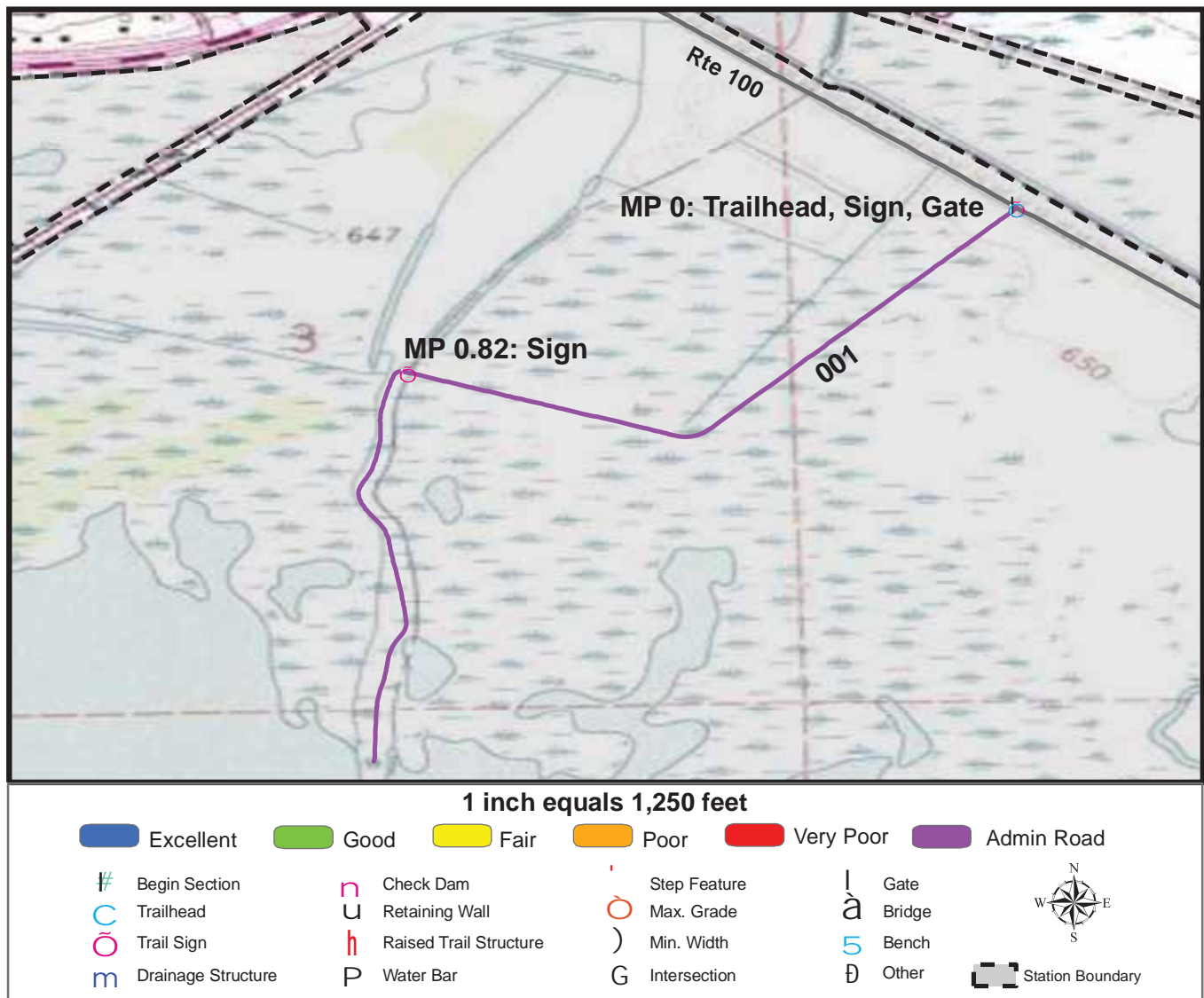
TOTAL LENGTH: 0.64 Miles

Section Number	001				
Section Length (miles)	0.64				
SAMMS Number	10011922				
Rating Date	7/22/2006				
Trail Section Information					
Trail Class	TC4				
Surface Type	Admin Road				
Surface Firmness	Hard				
Width (inches)	115				
Average Grade (%)	0				
Average X-slope (%)	0				
Trail Condition Information					
Deferred Maintenance	\$0				
CRV	\$0				
FCI	0				
Condition	Not Rated				

Trail Condition TOTALS

Deferred Maintenance	CRV	FCI	Condition
\$0	\$0	0	Not Rated

TRAIL CONDITION



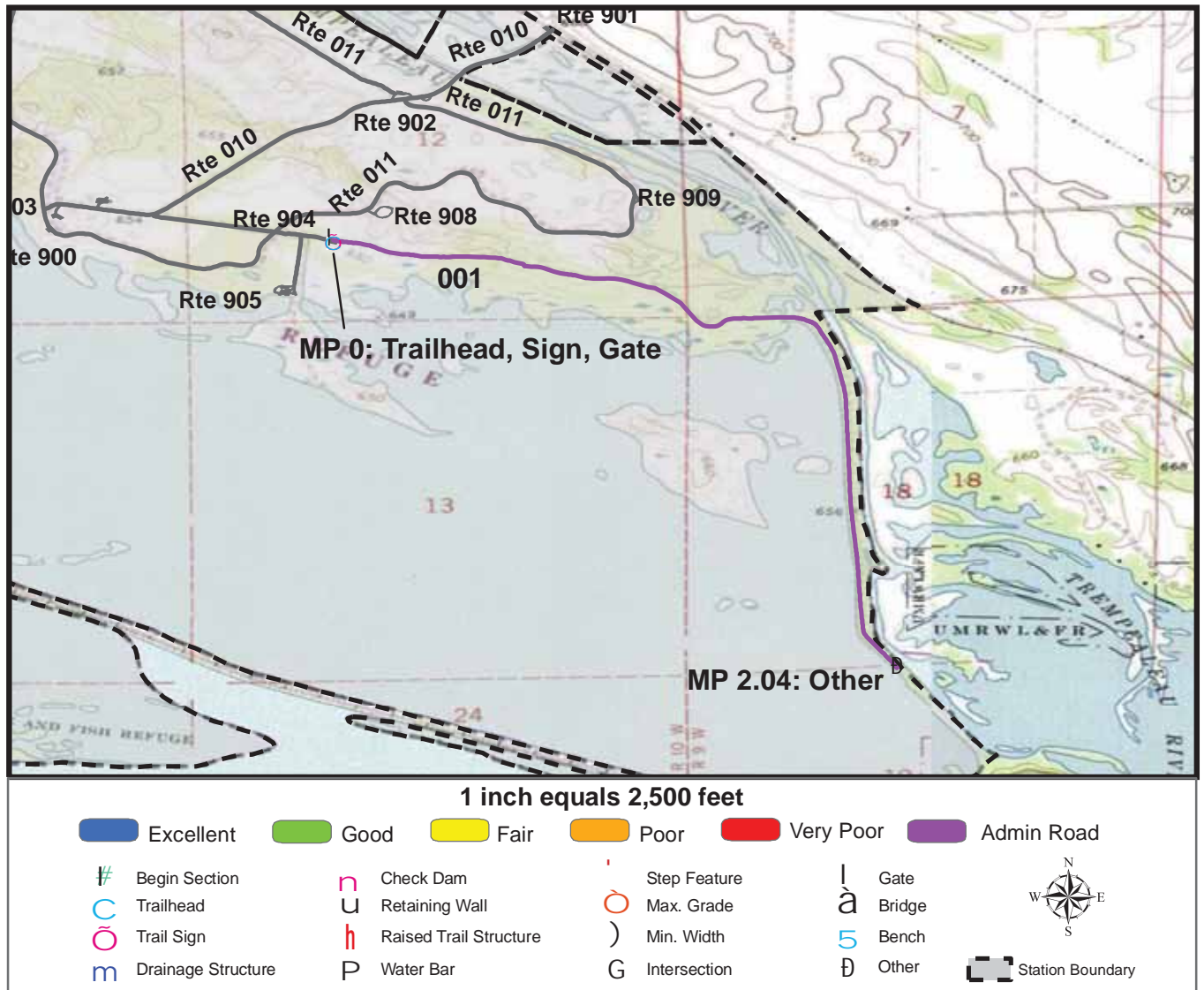
Trail Name: Delta Road **Refuge Name:** Trempealeau NWR
Trail Number: T403 **Region:** 3 **TOTAL LENGTH:** 1.33 Miles

Section Number	001				
Section Length (miles)	1.33				
SAMMS Number	10011890				
Rating Date	7/22/2006				
Trail Section Information					
Trail Class	TC4				
Surface Type	Admin Road				
Surface Firmness	Hard				
Width (inches)	100				
Average Grade (%)	0				
Average X-slope (%)	0				
Trail Condition Information					
Deferred Maintenance	\$0				
CRV	\$0				
FCI	0				
Condition	Not Rated				

Trail Condition TOTALS

Deferred Maintenance	CRV	FCI	Condition
\$0	\$0	0	Not Rated

TRAIL CONDITION



Trail Name: Lower Division Dike

Refuge Name: Trempealeau NWR

Trail Number: T404

Region: 3

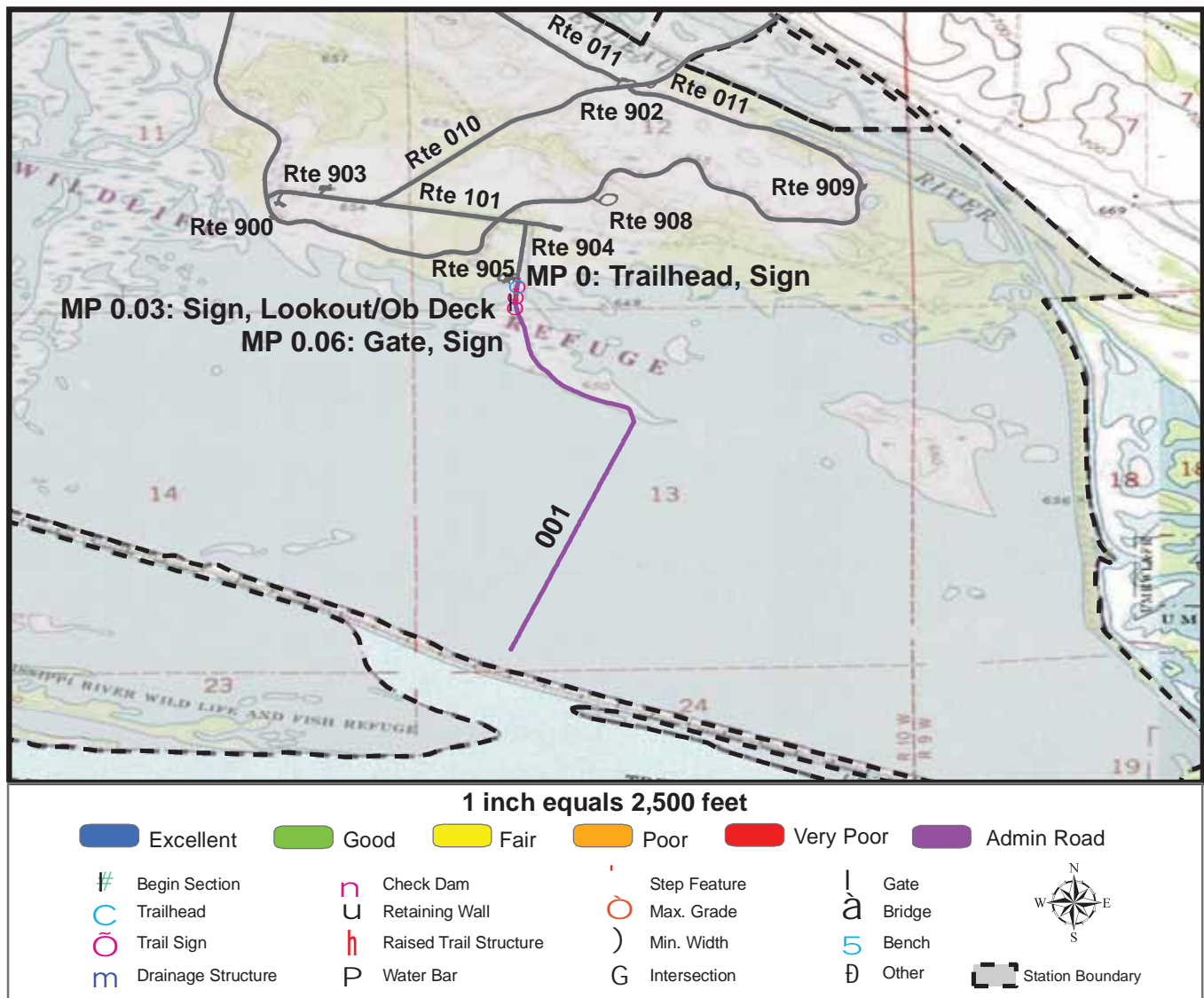
TOTAL LENGTH: 2.04 Miles

Section Number	001				
Section Length (miles)	2.04				
SAMMS Number	10011893				
Rating Date	7/22/2006				
Trail Section Information					
Trail Class	TC4				
Surface Type	Admin Road				
Surface Firmness	Hard				
Width (inches)	115				
Average Grade (%)	0				
Average X-slope (%)	0				
Trail Condition Information					
Deferred Maintenance	\$0				
CRV	\$0				
FCI	0				
Condition	Not Rated				

Trail Condition TOTALS

Deferred Maintenance	CRV	FCI	Condition
\$0	\$0	0	Not Rated

TRAIL CONDITION



Trail Name: Kieps Island Dike

Refuge Name: Trempealeau NWR

Trail Number: T405

Region: 3

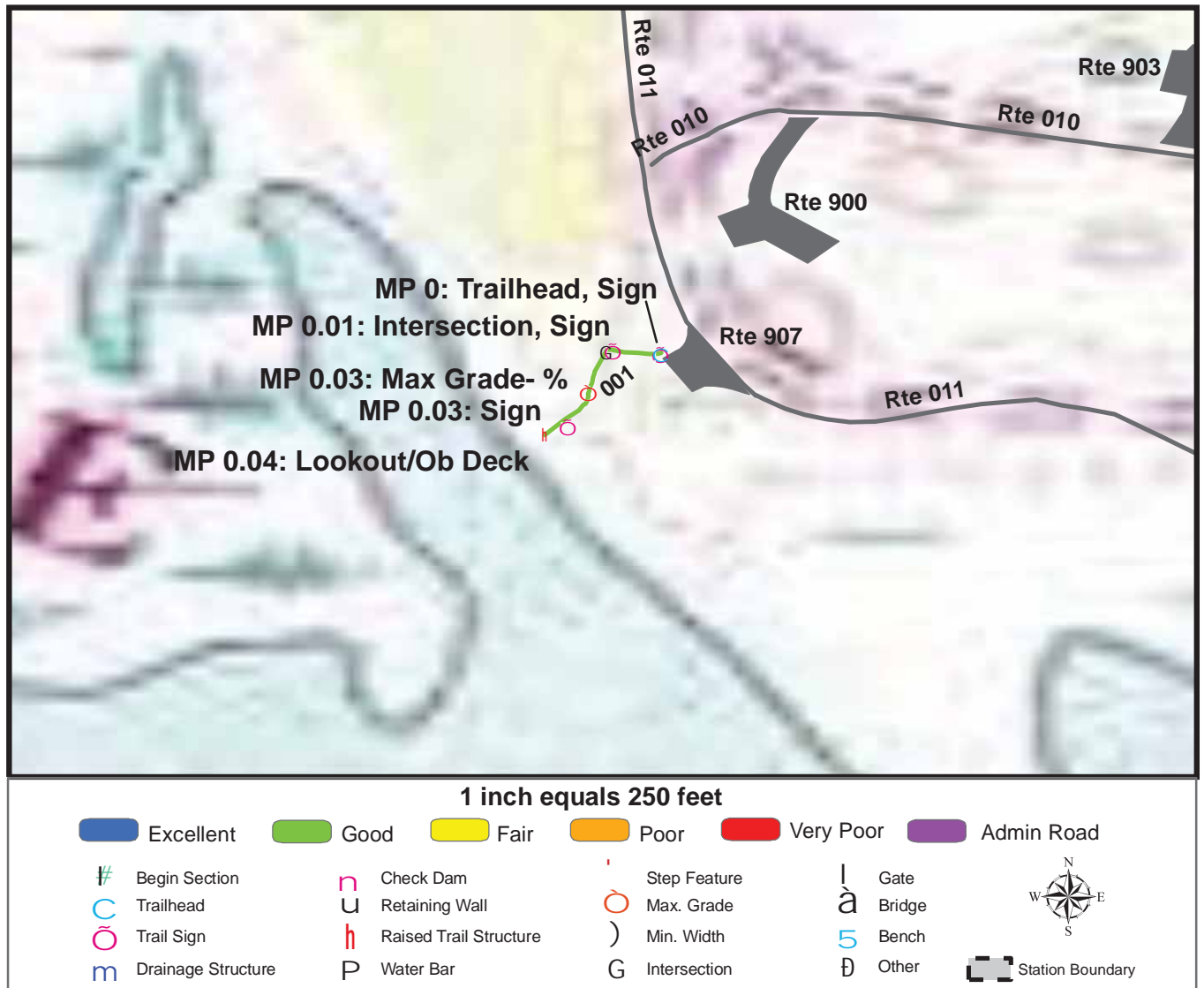
TOTAL LENGTH: 1.18 Miles

Section Number	001				
Section Length (miles)	1.18				
SAMMS Number	10011896				
Rating Date	7/22/2006				
Trail Section Information					
Trail Class	TC4				
Surface Type	Admin Road				
Surface Firmness	Hard				
Width (inches)	96				
Average Grade (%)	0				
Average X-slope (%)	0				
Trail Condition Information					
Deferred Maintenance	\$0				
CRV	\$0				
FCI	0				
Condition	Not Rated				

Trail Condition TOTALS

Deferred Maintenance	CRV	FCI	Condition
\$0	\$0	0	Not Rated

TRAIL CONDITION



Trail Name: Deck Trail

Refuge Name: Trempealeau NWR

Trail Number: T500

Region: 3

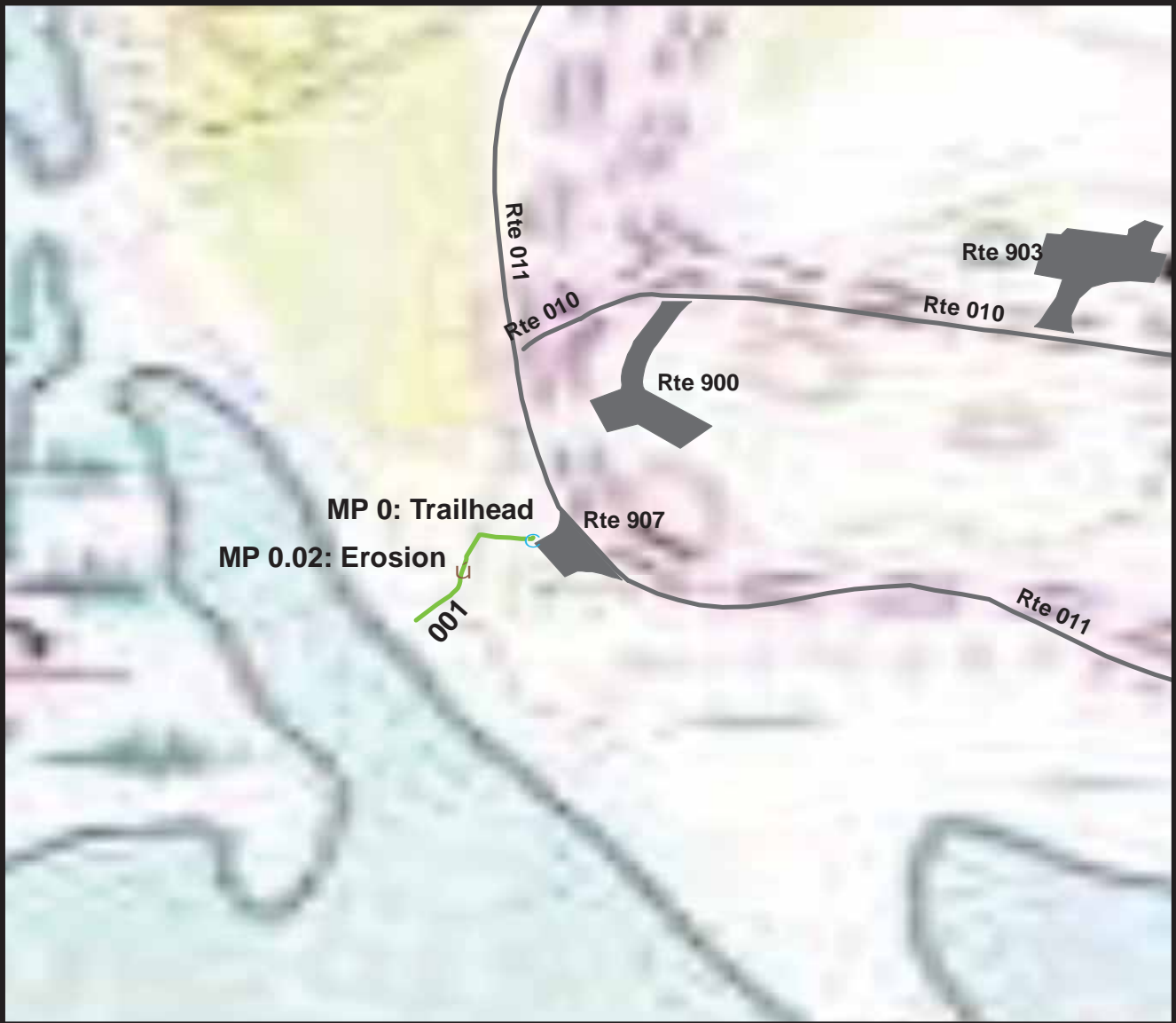
TOTAL LENGTH: 0.04 Miles

Section Number	001				
Section Length (miles)	0.04				
SAMMS Number	10011910				
Rating Date	7/21/2006				
Trail Section Information					
Trail Class	TC5				
Surface Type	Asphalt				
Surface Firmness	Paved				
Width (inches)	60				
Average Grade (%)	1.1				
Average X-slope (%)	2.2				
Trail Condition Information					
Deferred Maintenance	\$100				
CRV	\$5200				
FCI	0.019				
Condition	Good				

Trail Condition TOTALS

Deferred Maintenance	CRV	FCI	Condition
\$100	\$5200	0.019	Good

TRAIL DEFICIENCY



1 inch equals 250 feet					
Excellent	Good	Fair	Poor	Very Poor	Admin Road
# Begin Section	Erosion	Trail Location	Obstacle		
Trailhead	Drainage	Trail Structure	Other		

Trail Name: Deck Trail

Refuge Name: Trempealeau NWR

Trail Number: T500

Region: 3

TOTAL LENGTH: 0.04 Miles

Mile Post	0.02			
Section Number	001			
Photo Number	0688			
Deficiency	Erosion			
Action	Repair			
Item	Tread -sf			
Quantity	35			
Deferred Maintenance	\$100			

PHOTOGRAPHIC SHEET

TRAIL NUMBER: **T300**

STATION: Trempealeau NWR

DATE: 7/21/2006



Photo # 0697 - MP 0.0 - Trailhead

TRAIL NUMBER: **T300**

STATION: Trempealeau NWR

DATE: 7/21/2006



Photo # 0699 - MP 0.01 - Sign (Grouped)

PHOTOGRAPHIC SHEET

TRAIL NUMBER: **T301**

STATION: Trempealeau NWR

DATE: 7/21/2006



Photo # 0702 - MP 0.0 - Trailhead

TRAIL NUMBER: **T301**

STATION: Trempealeau NWR

DATE: 7/21/2006



Photo # 0703 - MP 0.01 - Sign (Grouped)

PHOTOGRAPHIC SHEET

TRAIL NUMBER: **T301**

STATION: Trempealeau NWR

DATE: 7/21/2006



Photo # 0704 - MP 0.16 - Begin Section 002

TRAIL NUMBER: **T301**

STATION: Trempealeau NWR

DATE: 7/21/2006



Photo # 0705 - MP 0.26 - Begin Section 003

PHOTOGRAPHIC SHEET

TRAIL NUMBER: **T400**

STATION: Trempealeau NWR

DATE: 7/21/2006



Photo # 0690 - MP 0.01 - Trailhead

TRAIL NUMBER: **T400**

STATION: Trempealeau NWR

DATE: 7/21/2006



Photo # 0691 - MP 0.01 - Sign

PHOTOGRAPHIC SHEET

TRAIL NUMBER: T400

STATION: Trempealeau NWR

DATE: 7/21/2006



Photo # 0692 - MP 0.03 - Sign

TRAIL NUMBER: T400

STATION: Trempealeau NWR

DATE: 7/21/2006



Photo # 0693 - MP 0.08 - Sign

PHOTOGRAPHIC SHEET

TRAIL NUMBER: **T400**

STATION: Trempealeau NWR

DATE: 7/21/2006



Photo # 0700 - MP 0.14 - Begin Section 002

TRAIL NUMBER: **T401**

STATION: Trempealeau NWR

DATE: 7/22/2006



Photo # 0706 - MP 0.0 - Trailhead, Sign, Gate

PHOTOGRAPHIC SHEET

TRAIL NUMBER: **T401**

STATION: Trempealeau NWR

DATE: 7/22/2006



Photo # 0708 - MP 0.82 - Begin Section 002

TRAIL NUMBER: **T401**

STATION: Trempealeau NWR

DATE: 7/22/2006



Photo # 0707 - MP 0.92 - Boardwalk

PHOTOGRAPHIC SHEET

TRAIL NUMBER: **T402**

STATION: Trempealeau NWR

DATE: 7/22/2006



Photo # 0709 - MP 0.0 - Trailhead, Gate

TRAIL NUMBER: **T403**

STATION: Trempealeau NWR

DATE: 7/22/2006



Photo # 0714 - MP 0.0 - Trailhead, Sign

PHOTOGRAPHIC SHEET

TRAIL NUMBER: **T403**

STATION: Trempealeau NWR

DATE: 7/22/2006



Photo # 0715 - MP 0.82 - Sign

TRAIL NUMBER: **T404**

STATION: Trempealeau NWR

DATE: 7/22/2006



Photo # 0720 - MP 0.0 - Trailhead, Sign, Gate

PHOTOGRAPHIC SHEET

TRAIL NUMBER: **T405**

STATION: Trempealeau NWR

DATE: 7/22/2006



Photo # 0725 - MP 0.0 - Trailhead, Sign

TRAIL NUMBER: **T405**

STATION: Trempealeau NWR

DATE: 7/22/2006



Photo # 0726 - MP 0.03 - Sign

PHOTOGRAPHIC SHEET

TRAIL NUMBER: **T405**

STATION: Trempealeau NWR

DATE: 7/22/2006



Photo # 0728 - MP 0.06 - Sign

TRAIL NUMBER: **T500**

STATION: Trempealeau NWR

DATE: 7/21/2006



Photo # 0684 - MP 0.0 - Trailhead

PHOTOGRAPHIC SHEET

TRAIL NUMBER: **T500**

STATION: Trempealeau NWR

DATE: 7/21/2006



Photo # 0685 - MP 0.0 - Sign

TRAIL NUMBER: **T500**

STATION: Trempealeau NWR

DATE: 7/21/2006



Photo # 0686 - MP 0.01 - Sign

PHOTOGRAPHIC SHEET

TRAIL NUMBER: **T500**

STATION: Trempealeau NWR

DATE: 7/21/2006



Photo # 0688 - MP 0.02 - Erosion Deficiency

TRAIL NUMBER: **T500**

STATION: Trempealeau NWR

DATE: 7/21/2006



Photo # 0687 - MP 0.03 - Sign

The Trail Inventory of Upper Mississippi-LaCrosse District National Wildlife Refuge Onalaska, Wisconsin



**Prepared By:
Federal Highway Administration
Central Federal Lands Highway Division
July 2006**



Upper Mississippi-LaCrosse District NWR

Trail and Trail Feature Summaries

Trail Miles and Percentages by Surface Type and Condition

Trail Surface Type	Mileage by Trail Condition												Total Miles
	Excellent		Good		Fair		Poor		Very Poor		Not Rated*		
	MILES	%	MILES	%	MILES	%	MILES	%	MILES	%	MILES	%	
Native		0%		0%		0%		0%		0%		0%	0.00
Gravel		0%		0%		0%		0%		0%		0%	0.00
Asphalt		0%		0%		0%		0%		0%		0%	0.00
Concrete		0%		0%		0%		0%		0%		0%	0.00
Turnpike		0%		0%		0%		0%		0%		0%	0.00
Boardwalk		0%		0%		0%		0%		0%		0%	0.00
Puncheon		0%		0%		0%		0%		0%		0%	0.00
Woodchips		0%		0%		0%		0%		0%		0%	0.00
Mowed	0.88	77%	0.27	23%		0%		0%		0%		0%	1.15
Admin Road		0%		0%		0%		0%		0%		0%	0.00
Other		0%		0%		0%		0%		0%		0%	0.00
Totals	0.88	77%	0.27	23%	0.00	0%	0.00	0%	0.00	0%	0.00	0%	1.15

Trail Miles and Percentages by Trail Classification and Condition

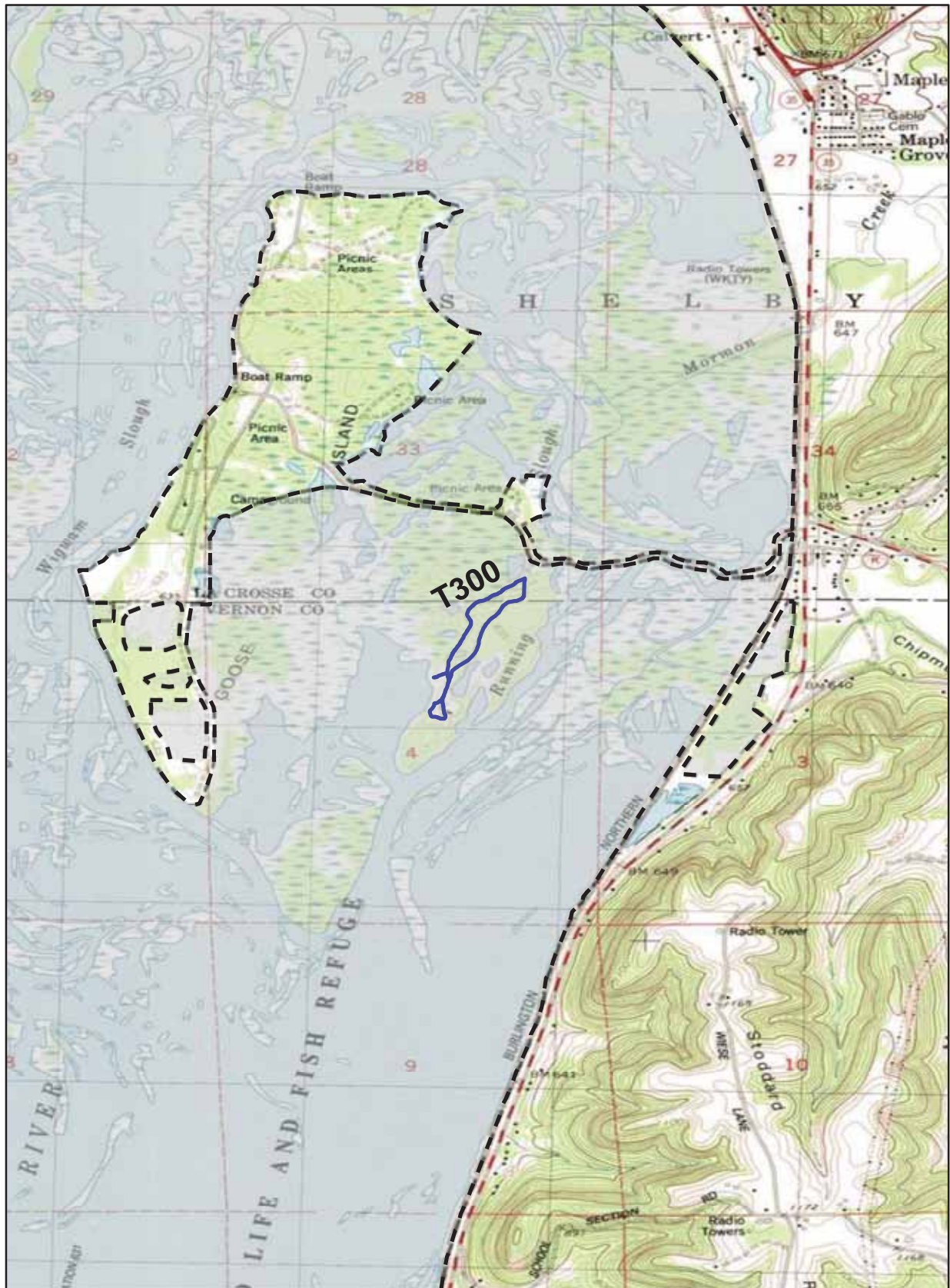
Trail Classification	Mileage by Trail Condition												Total Miles
	Excellent		Good		Fair		Poor		Very Poor		Not Rated*		
	MILES	%	MILES	%	MILES	%	MILES	%	MILES	%	MILES	%	
TC1		0%		0%		0%		0%		0%		0%	0.00
TC2		0%		0%		0%		0%		0%		0%	0.00
TC3	0.88	77%	0.27	23%		0%		0%		0%		0%	1.15
TC4		0%		0%		0%		0%		0%		0%	0.00
TC5		0%		0%		0%		0%		0%		0%	0.00
Totals	0.88	77%	0.27	23%	0.00	0%	0.00	0%	0.00	0%	0.00	0%	1.15

Admin Roads are included in the inventory but are not rated for condition

Trail Features

Trail Number	Feature Type	Quantity	Grouped Feature	Milepost	Photo
T300	Sign	3	No	0.00	0731
T300	Bench	1	No	0.20	N/A
T300	Bench	1	No	0.40	N/A
T300	Bench	1	No	0.45	N/A
T300	Lookout/Ob Deck	1	No	0.52	N/A
T300	Bench	1	No	0.61	N/A
T300	Bench	1	No	0.55	N/A
T300	Sign	4	No	0.00	0736
sf-square feet lf-linear feet cf-cubic feet					

UPPER MISSISSIPPI-LACROSSE DISTRICT NATIONAL WILDLIFE REFUGE TRAIL LOCATION MAP



 Station Boundary

@ HQ/VC

0 0.5 1 Miles

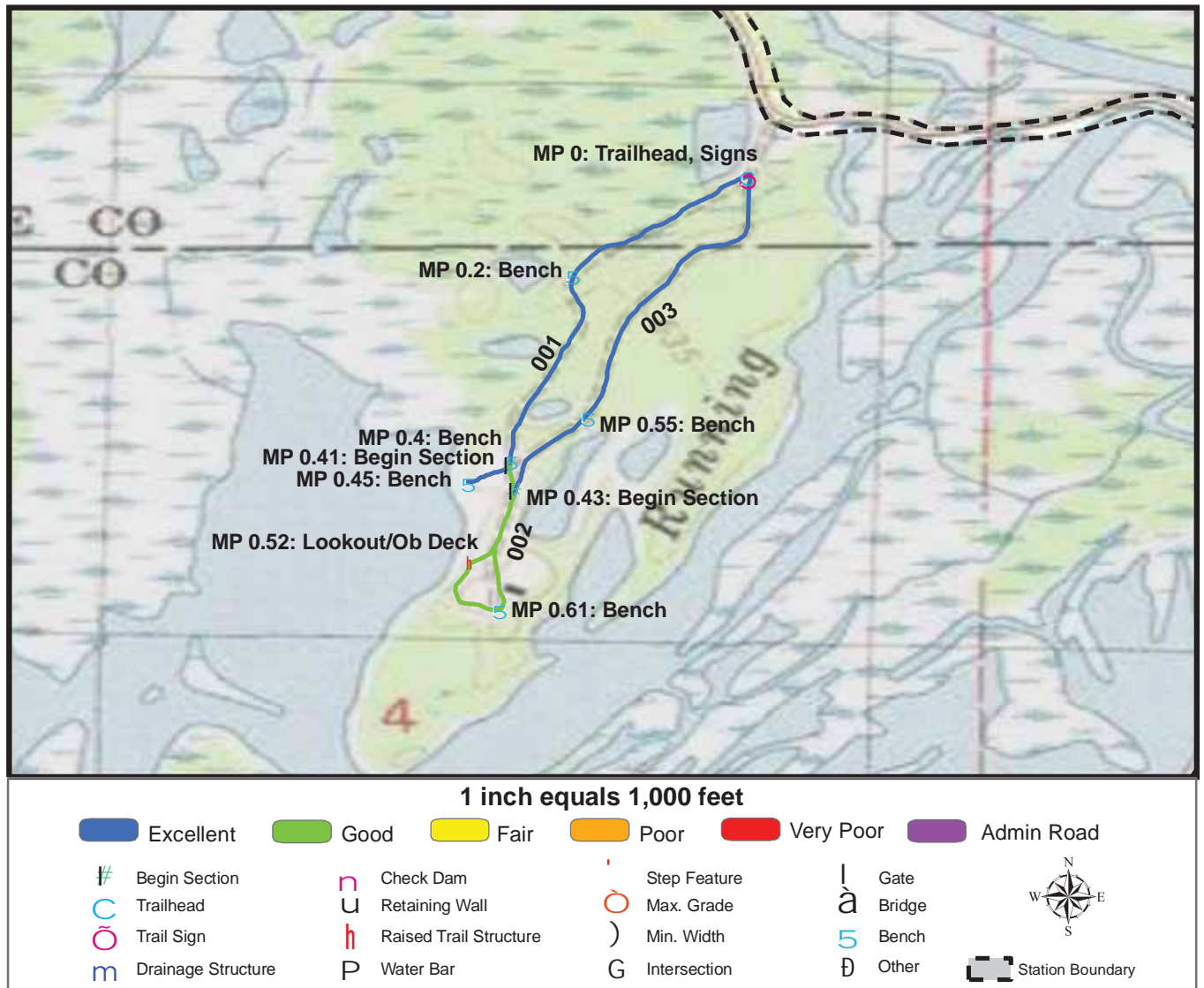
TRAILS ID

Station Name: Upper Mississippi-LaCrosse District

Org. Code: 32572

Trail #	Trail Name	Surface Type	SAMMS	Trail Mileage	Trail Description (Begin and End point of trail)
T300	Goose Island Interpretive Trail	Mowed	10053999	1.15	From Parking Lot to end of trail

TRAIL CONDITION



Trail Name: Goose Island Interpretive Trail

Refuge Name: Upper Mississippi - LaCrosse District NWR

Trail Number: T300

Region: 3

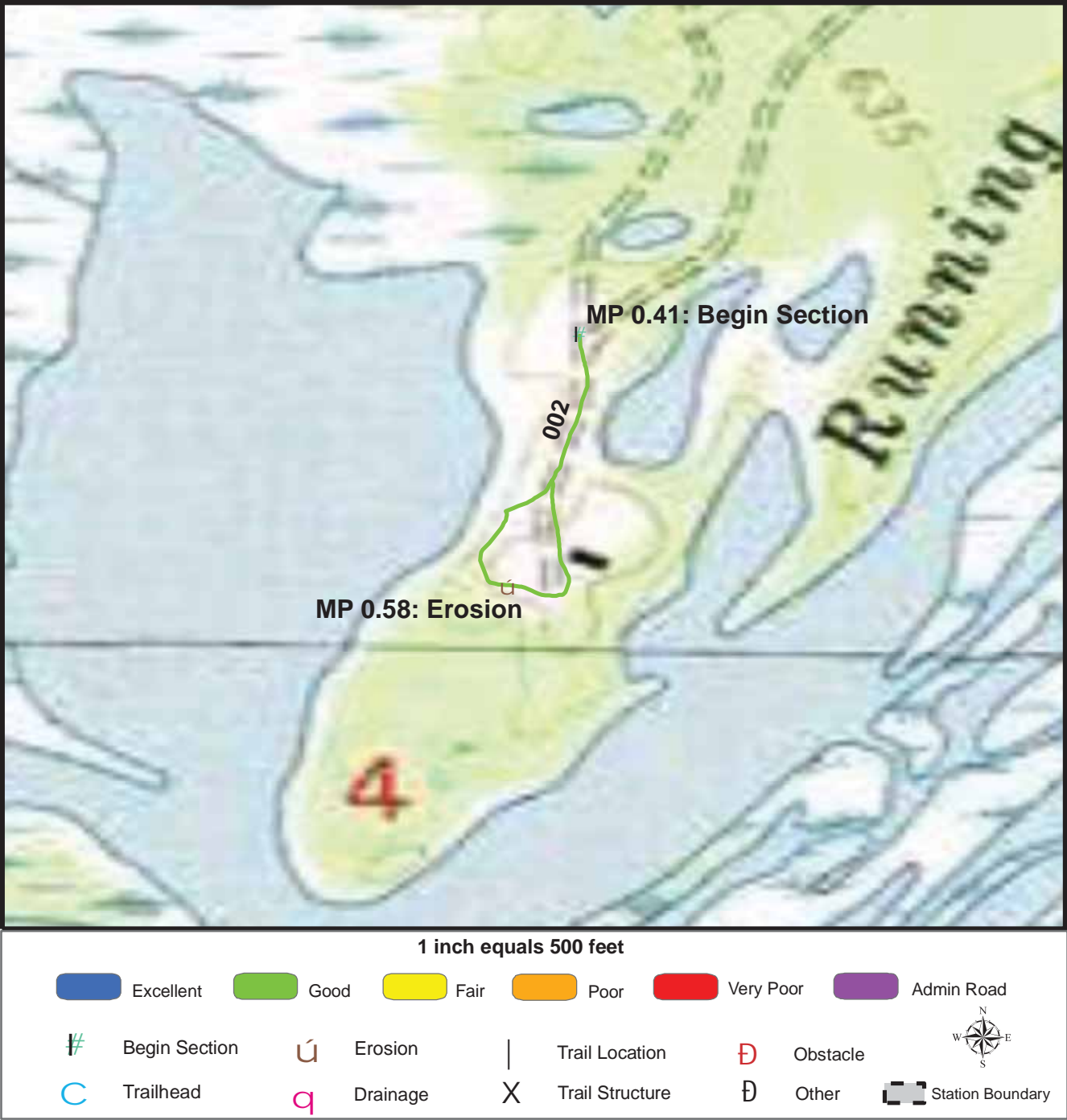
TOTAL LENGTH: 1.15 Miles

Section Number	001	002	003		
Section Length (miles)	0.45	0.27	0.43		
SAMMS Number	10053999	10053999	10053999		
Rating Date	7/24/2006	7/24/2006	7/24/2006		
Trail Section Information					
Trail Class	TC3	TC3	TC3		
Surface Type	Mowed	Mowed	Mowed		
Surface Firmness	Firm	Firm	Firm		
Width (inches)	60	60	60		
Average Grade (%)	1.7	1.7	1.7		
Average X-slope (%)	0.6	0.6	0.6		
Trail Condition Information					
Deferred Maintenance	\$0	\$100	\$0		
CRV	\$14800	\$8900	\$14000		
FCI	0	0.011	0		
Condition	Excellent	Good	Excellent		

Trail Condition TOTALS

Deferred Maintenance	CRV	FCI	Condition
\$100	\$37700	0.003	Excellent

TRAIL DEFICIENCY



Trail Name: Goose Island Interpretive Trail

Refuge Name: Upper Mississippi - LaCrosse District NWR

Trail Number: T300

Region: 3

TOTAL LENGTH: 1.15 Miles

Mile Post	0.58			
Section Number	002			
Photo Number	0734			
Deficiency	Erosion			
Action	Repair			
Item	Tread -sf			
Quantity	25			
Deferred Maintenance	\$100			

PHOTOGRAPHIC SHEET

TRAIL NUMBER: **T300**

STATION: Upper Mississippi - LaCrosse District NWR

DATE: 7/24/2006



Photo # 0730 - MP 0.0 - Trailhead

TRAIL NUMBER: **T300**

STATION: Upper Mississippi - LaCrosse District NWR

DATE: 7/24/2006



Photo # 0731 - MP 0.0 - Sign

PHOTOGRAPHIC SHEET

TRAIL NUMBER: **T300**

STATION: Upper Mississippi - LaCrosse District NWR

DATE: 7/24/2006



Photo # 0736 - MP 0.0 - Sign

TRAIL NUMBER: **T300**

STATION: Upper Mississippi - LaCrosse District NWR

DATE: 7/24/2006



Photo # 0733 - MP 0.41 - Begin Section 002

PHOTOGRAPHIC SHEET

TRAIL NUMBER: **T300**

STATION: Upper Mississippi - LaCrosse District NWR

DATE: 7/24/2006



Photo # 0735 - MP 0.43 - Begin Section 003

TRAIL NUMBER: **T300**

STATION: Upper Mississippi - LaCrosse District NWR

DATE: 7/24/2006



Photo # 0734 - MP 0.58 - Erosion Deficiency

The Trail Inventory of Whittlesey Creek National Wildlife Refuge Ashland, WI



Prepared By:
Federal Highway Administration
Central Federal Lands Highway Division
August, 2006



Whittlesey Creek NWR

Trail and Trail Feature Summaries

Trail Miles and Percentages by Surface Type and Condition

Trail Surface Type	Mileage by Trail Condition												Total Miles
	Excellent		Good		Fair		Poor		Very Poor		Not Rated*		
	MILES	%	MILES	%	MILES	%	MILES	%	MILES	%	MILES	%	
Native		0%		0%		0%		0%		0%		0%	0.00
Gravel	0.10	100%		0%		0%		0%		0%		0%	0.10
Asphalt		0%		0%		0%		0%		0%		0%	0.00
Concrete		0%		0%		0%		0%		0%		0%	0.00
Turnpike		0%		0%		0%		0%		0%		0%	0.00
Boardwalk		0%		0%		0%		0%		0%		0%	0.00
Puncheon		0%		0%		0%		0%		0%		0%	0.00
Woodchips		0%		0%		0%		0%		0%		0%	0.00
Mowed		0%		0%		0%		0%		0%		0%	0.00
Admin Road		0%		0%		0%		0%		0%		0%	0.00
Other		0%		0%		0%		0%		0%		0%	0.00
Totals	0.10	100%	0.00	0%	0.00	0%	0.00	0%	0.00	0%	0.00	0%	0.10

Trail Miles and Percentages by Trail Classification and Condition

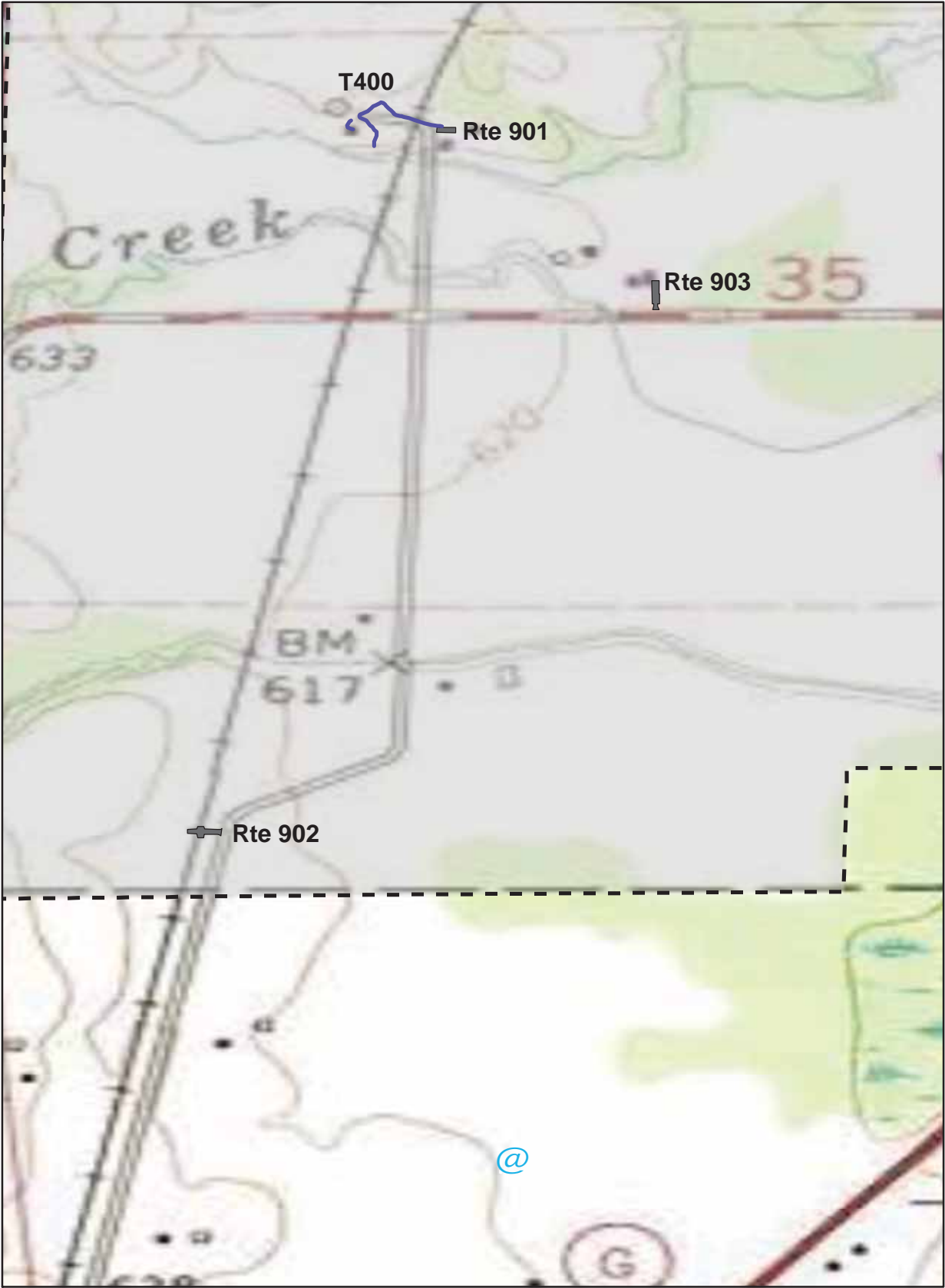
Trail Classificatio n	Mileage by Trail Condition												Total Miles
	Excellent		Good		Fair		Poor		Very Poor		Not Rated*		
	MILES	%	MILES	%	MILES	%	MILES	%	MILES	%	MILES	%	
TC1		0%		0%		0%		0%		0%		0%	0.00
TC2		0%		0%		0%		0%		0%		0%	0.00
TC3		0%		0%		0%		0%		0%		0%	0.00
TC4	0.10	100%		0%		0%		0%		0%		0%	0.10
TC5		0%		0%		0%		0%		0%		0%	0.00
Totals	0.10	100%	0.00	0%	0.00	0%	0.00	0%	0.00	0%	0.00	0%	0.10

* Admin Roads are included in the inventory but are not rated for condition.

Trail Features

Trail Number	Feature Type	Quantity	Grouped Feature	Milepost	Photo
T400	Sign	9		0.00	1653
T400	Sign	1		0.00	1654
T400	Trailhead	1		0.00	1655
T400	Culvert -lf	20		0.03	N/A
T400	Sign	1		0.04	1656
T400	Begin Section	1		0.06	1657
T400	Bench	1		0.06	N/A
T400	Other	1		0.06	N/A
T400	Bench	1		0.06	N/A
T400	Culvert -lf	10		0.08	N/A
T400	Lookout/Ob Deck	1		0.09	N/A
sf-square feet lf-linear feet cf-cubic feet					

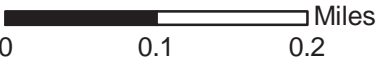
WHITTLESEY CREEK NATIONAL WILDLIFE REFUGE TRAIL LOCATION MAP



Station Boundary



HQ/VC



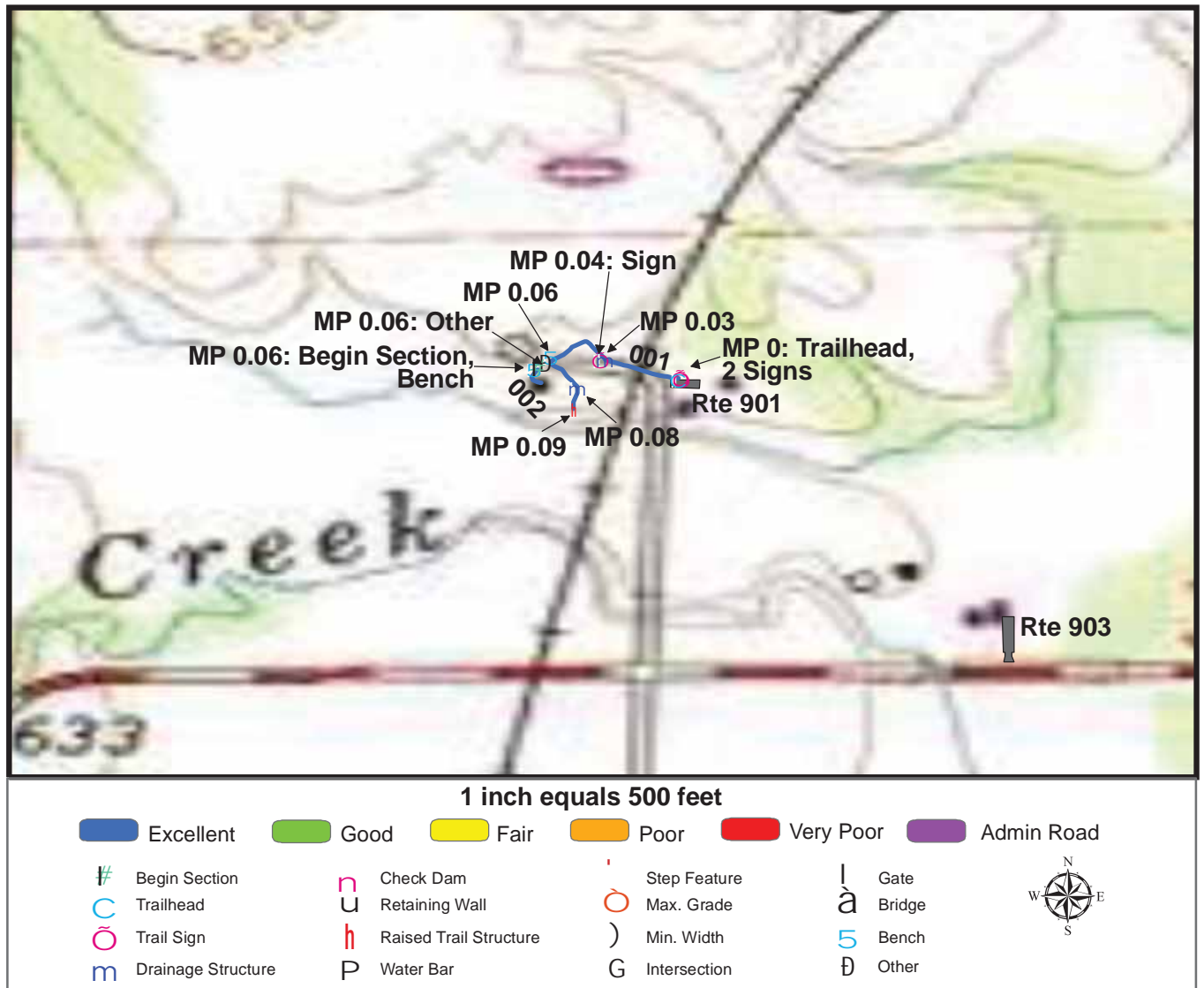
TRAILS ID

Station Name: Whittlesey Creek NWR

Org. Code: 32620

Trail #	Trail Name	Surface Type	SAMMS	Trail Mileage	Trail Description (Begin and End point of trail)
T400	Coaster Classroom Trail	Gravel	10054901	0.1	From Bus Turnaround Parking (Rte 901) to end of trail.

TRAIL CONDITION



Trail Name: Coaster Classroom Trail

Refuge Name: Whittlesey Creek NWR

Trail Number: T400

Region: 3

TOTAL LENGTH: 0.1 Miles

Section Number	001	002			
Section Length (miles)	0.09	0.01			
SAMMS Number	10054901	10054901			
Rating Date	8/21/2006	8/21/2006			
Trail Section Information					
Trail Class	TC4	TC4			
Surface Type	Gravel	Gravel			
Surface Firmness	Firm	Firm			
Width (inches)	84	72			
Average Grade (%)	4.6	4.6			
Average X-slope (%)	3.5	3.5			
Trail Condition Information					
Deferred Maintenance	\$0	\$0			
CRV	\$21680	\$1760			
FCI	0	0			
Condition	Excellent	Excellent			

Trail Condition TOTALS

Deferred Maintenance	CRV	FCI	Condition
\$0	\$23441	0	Excellent

PHOTOGRAPHIC SHEET

TRAIL NUMBER: **T400**

STATION: Whittlesey Creek NWR

DATE: 8/21/2006



Photo # 1655 - MP 0.0 - Trailhead

TRAIL NUMBER: **T400**

STATION: Whittlesey Creek NWR

DATE: 8/21/2006



Photo # 1653 - MP 0.0 - Sign

PHOTOGRAPHIC SHEET

TRAIL NUMBER: **T400**

STATION: Whittlesey Creek NWR

DATE: 8/21/2006



Photo # 1654 - MP 0.0 - Sign

TRAIL NUMBER: **T400**

STATION: Whittlesey Creek NWR

DATE: 8/21/2006



Photo # 1656 - MP 0.04 - Sign

PHOTOGRAPHIC SHEET

TRAIL NUMBER: **T400**

STATION: Whittlesey Creek NWR

DATE: 8/21/2006



Photo # 1657 - MP 0.06 - Begin Section 002

APPENDIX

Glossary of Terms and Abbreviations

Acc Info	Accessibility information available at trailhead.
Action	Action required to correct deficiency.
Admin Road	Administration Road. Admin Roads signed and advertised as trails are included in the trail inventory but a condition assessment is NOT done.
Alt SAMMS	Asset number of Alternate Facility Type.
Alt Type	Alternate Facility Type. Trail lies on a feature such as a levee, dam, administrative road or bridge, which has a separate SAMMS number.
AvgGrade	The average grade of the trail (%). The average of five measurements for trails less than two miles and ten measurements for trails equal to or greater than 2 miles.
AvgSlope	The average cross-slope of the trail (%). The average of five measurements for trails less than two miles and ten measurements for trails equal to or greater than 2 miles.
Check Dam	A small dam constructed across a drainage ditch, swale, or channel to lower the speed of concentrated flows.
Condition	Subjective rating of trail based on Facility Condition Index (FCI): FCI \leq .01 = Excellent FCI .011 - .05 = Good FCI .051 - .10 = Fair FCI .11 - .20 = Poor FCI $>$.20 = Very Poor
Crib Wall	Retaining wall.
Current Replacement Value (CRV)	The value of an asset determined by the estimated cost of replacing it.
Def type	Deficiency Type: Trail Structure, Drainage, Erosion, Obstacle, Trail Location, Other.

Deferred Maintenance (DM)	Maintenance that was not performed when scheduled.
Elem ID	Unique identifier for each trail section: Org Code-Trail Number-Section Number.
Facility Condition Index (FCI)	DM/CRV
Grouped Features	Grouped features include non-unique signs (mileposts, interpretive signs, species identification, etc.), water bars, check dams, steps, drain and drainage dips. For any given grouped feature, a GPS point and photo are taken for the first occurrence only and the total number of features in the group are entered into the “quantity” field of the data dictionary. CRV for grouped features are included in whatever trail section the GPS point was taken.
Info Type	Type of accessibility information available at trailhead: brochure, sign or other.
Item	Item on which the “Action” (see above) will be performed.
Manage_Use	Managed use of the trail: HIKE, BIKE, NSPC (non-specified), PACK, POR (portage), SNOWSHOE, XSKI (cross-country ski), OTHER.
Max Grade	Maximum grade (in percent) of trail. Only collected for Trail Classes 4 and 5 and when > 10%.
Min Width	Minimum Width (inches) of trail. Only collected for Trail Classes 4 and 5.
MP (Milepost)	Distance, in miles, of a trail feature or deficiency from the Trailhead.
Puncheon	Log footbridge used in area of poor drainage.
Raised Trail Structure	Boardwalk, Turnpike, Puncheon.
SAMMS No	Asset Number

Station Boundary	Approved Acquisition Boundary files downloaded from FWS website.
T Class	Trail Class: TC1-5 (see Trail Classification System for descriptions).
Tr Desig	Trail Designation: Standard (Std), National Historic Trail (NHT), National Recreation Trail (NRT), National Scenic Trail (NST).
Trail No	Trails are numbered based on Trail Class at the trailhead. TC 1 = T100 series, TC2 = T200 series, etc.
Turnpike	Trail tread elevated with dirt, rock or other aggregate from parallel side ditches and held in place by logs.



Trail Classification

Note: Trail Class descriptions define “typical” attributes, and exceptions may occur for any attribute.

Trail Attributes	Trail Class 1 Minimal/Undeveloped Trail	Trail Class 2 Simple/Minor Development Trail	Trail Class 3 Developed/Improved Trail	Trail Class 4 Highly Developed Trail	Trail Class 5 Fully Developed Trail
General Criteria					
Physical Characteristics to be Applied to All National Forest System Trails					
Tread & Traffic Flow	<ul style="list-style-type: none"> •Tread intermittent and often indistinct •May require route finding •Native materials only 	<ul style="list-style-type: none"> •Tread discernible and continuous, but narrow and rough •Few or no allowances constructed for passing •Native materials 	<ul style="list-style-type: none"> •Tread obvious and continuous •Width accommodates unhindered one-lane travel (occasional allowances constructed for passing) •Typically native materials 	<ul style="list-style-type: none"> •Tread wide and relatively smooth with few irregularities •Width may consistently accommodate two-lane travel •Native or imported materials •May be hardened 	<ul style="list-style-type: none"> •Width generally accommodates two-lane and two-directional travel, or provides frequent passing turnouts •Commonly hardened with asphalt or other imported material
Obstacles	<ul style="list-style-type: none"> •Obstacles common •Narrow passages; brush, steep grades, rocks and logs present 	<ul style="list-style-type: none"> •Obstacles occasionally present •Blockages cleared to define route and protect resources •Vegetation may encroach into trailway 	<ul style="list-style-type: none"> •Obstacles infrequent •Vegetation cleared outside of trailway 	<ul style="list-style-type: none"> •Few or no obstacles exist •Grades typically <12% •Vegetation cleared outside of trailway 	<ul style="list-style-type: none"> •No obstacles •Grades typically <8%
Constructed Features & Trail Elements	<ul style="list-style-type: none"> •Minimal to non-existent •Drainage is functional •No constructed bridges or foot crossings 	<ul style="list-style-type: none"> •Structures are of limited size, scale, and number •Drainage functional •Structures adequate to protect trail infrastructure and resources •Primitive foot crossings and fords 	<ul style="list-style-type: none"> •Trail structures (walls, steps, drainage, raised trail) may be common and substantial •Trail bridges as needed for resource protection and appropriate access •Generally native materials used in Wilderness 	<ul style="list-style-type: none"> •Structures frequent and substantial •Substantial trail bridges are appropriate at water crossings •Trailside amenities may be present 	<ul style="list-style-type: none"> •Structures frequent or continuous; may include curbs, handrails, trailside amenities, and boardwalks •Drainage structures frequent; may include culverts and road-like designs
Signs	<ul style="list-style-type: none"> •Minimum required •Generally limited to regulation and resource protection •No destination signs present 	<ul style="list-style-type: none"> •Minimum required for basic direction •Generally limited to regulation and resource protection •Typically very few or no destination signs present 	<ul style="list-style-type: none"> •Regulation, resource protection, user reassurance •Directional signs at junctions, or when confusion is likely •Destination signs typically present •Informational and interpretive signs may be present outside of Wilderness 	<ul style="list-style-type: none"> •Wide variety of signs likely present •Informational signs likely (outside of Wilderness) •Interpretive signs possible (outside of Wilderness) •Trail Universal Access information likely displayed at trailhead 	<ul style="list-style-type: none"> •Wide variety of signage is present •Information and interpretive signs likely •Trail Universal Access information is typically displayed at trailhead •
Typical Recreation Environments & Experience²	<ul style="list-style-type: none"> •Natural, unmodified •ROS: Often Primitive setting, but may occur in other ROS settings •WROS: Primitive 	<ul style="list-style-type: none"> •Natural, essentially unmodified •ROS: Typically Semi-Primitive setting •WROS: Primitive to Semi-Primitive 	<ul style="list-style-type: none"> •Natural, primarily unmodified •ROS: Typically Semi-Primitive to Roaded Natural setting •WROS: Semi-Primitive to Transition 	<ul style="list-style-type: none"> •May be modified •ROS: Typically Roaded Natural to Rural setting •WROS: Transition (rarely present in Wilderness) 	<ul style="list-style-type: none"> •Can be highly modified •ROS: Typically Rural to Urban setting •Commonly associated with Visitor Centers or high-use recreation sites •Not present in Wilderness