

The Road Inventory of Fish Springs National Wildlife Refuge Dugway, UT



Prepared By:
Federal Highway Administration
Central Federal Lands Highway Division
April 2008



TABLE OF CONTENTS

<u>SECTION</u>		<u>PAGE</u>
I.	<u>INTRODUCTION</u>	1 - 1
II.	<u>SUMMARY INFORMATION</u> Summaries by Condition, Surface Type and Functional Class	2 - 1
III.	<u>REFUGE ROUTE LOCATION MAPS</u>	3 - 1
IV.	<u>ROUTE IDENTIFICATION LIST</u>	4 - 1
V.	<u>ROUTE CONDITION RATING SHEETS</u>	5 - 1
VI.	<u>PARKING LOT CONDITION RATING SHEETS</u>	6 - 1
VII.	<u>BRIDGE INVENTORY INFORMATION</u>	7 - 1
VIII.	<u>PHOTOGRAPHIC SHEETS</u>	8 - 1
IX.	<u>APPENDIX</u> Functional Classification Table	i
	Description of Rating System	ii

INTRODUCTION

The Transportation Equity Act for the 21st Century (Public Law 105-178) created the Refuge Roads Program. Refuge roads are those public roads that provide access to or within a unit of the National Wildlife Refuge System and for which title and maintenance responsibility is vested in the United States Government. Funds from the Highway Trust Fund are available for refuge roads and can be used by the station to pay the cost of:

- (a) Maintenance and improvements of refuge roads.
- (b) Maintenance and improvements of:
 - (1) Adjacent vehicle parking areas
 - (2) Provision for pedestrians and bicycles and
 - (3) Construction and reconstruction of roadside rest areas that are located in or adjacent to wildlife refuges
- (c) Administrative costs associated with such maintenance and improvements.

The funds available for refuge roads are to be disbursed based on the relative needs of the various refuges in the National Wildlife Refuge System, and taking into consideration:

- (a) The comprehensive conservation plan for each refuge;
- (b) The need for access as identified through land use planning; and
- (c) The impact of land use planning on existing transportation facilities.

To determine the relative needs of the U.S. Fish and Wildlife Service, the Federal Highway Administration (FHWA) was asked to inventory all public access roads and parking lots and provide a condition assessment of each. In 2008 the inventory was expanded to include administrative (service use only) roads and parking lots. An FHWA representative meets with refuge personnel to identify route segments and assign route numbers and functional classifications (See Appendix) for each route. All roads and parking lots are mapped using Trimble GPS units and visually assessed for condition using the RSL method of evaluation developed at Utah State University (See Appendix). Culverts, Gates, Guardrails and Low Water Crossings are also mapped and inspected for any obvious defects.

An estimate is provided, in year 2008 dollars, based on the condition determined by the rating system. Estimates are based upon data and location factors from the 2008 RS Means Heavy Construction Cost Data 22nd Annual Edition. Cost estimates should be evaluated on a case-by-case basis when being used for programming purposes.

Native Surfaced roads and parking lots already inventoried will not be re-inventoried and will not appear individually in report chapters 5, 6 and 8. Mileages and areas of native surfaced roads and parking lots will still appear in all summaries in the report and will remain in the road inventory database. In addition to this report, the FHWA will furnish the condition ratings of each route and segment to the Fish and Wildlife Service in a Microsoft Access database so the data can be included in their Real Property Inventory.

Summaries

Route Miles and Percentages by Functional Class and Condition

F. C.	Condition Rating (Based on RSL)*										TOTAL MILES
	Excellent		Good		Fair		Poor		Failed		
	MILES	%	MILES	%	MILES	%	MILES	%	MILES	%	
I	9.06	100%									9.06
II	11.18	53.7%	5.38	25.8%	4.25	20.4%					20.81
III											
IV	6.58	42.2%	3.37	21.7%	5.63	36.2%					15.58
V											
Totals	26.82	59.0%	8.75	19%	9.88	21.7%					45.45

*For a description of condition ratings for the various surface types see the Appendix.

Route Miles and Percentages by Surface Type and Condition

S. T.	Paved Condition Rating [Condition(RSL)]										TOTAL MILES
	Excellent (19-20)		Good (13-18)		Fair (7-12)		Poor (1-6)		Failed (0)		
	MILES	%	MILES	%	MILES	%	MILES	%	MILES	%	
AS											
CO											
Totals											

S. T.	Unpaved Condition Rating [Condition(RSL)]										TOTAL MILES
	Excellent (8-10)		Good (5-7)		Fair (3-4)		Poor (1-2)		Failed (0)		
	MILES	%	MILES	%	MILES	%	MILES	%	MILES	%	
GR	26.20	65.6%	6.59	16.5%	7.17	17.9%					39.96
NA	0.62	14.4%	1.62	37.6%	2.07	48.0%					4.30
PR			0.54	45.5%	0.65	54.5%					1.19
Totals	26.82	59.0%	8.75	19.3%	9.88	21.7%					45.45

Square Footage (Parking Areas)

S. T.	Condition Rating										Total Square Feet
	Excellent		Good		Fair		Poor		Failed		
	Square Feet	%	Square Feet	%	Square Feet	%	Square Feet	%	Square Feet	%	
AS											
CO	768	100%									768
GR	16213	19.6%	21825	26.3%	8877	10.7%	34378	41.5%	1575	1.9%	82868
NA					945	7.4%	11808	92.6%			12753
PR											
Totals	16981	17.6%	21825	22.6%	9822	10.2%	46186	47.9%	1575	1.6%	96389

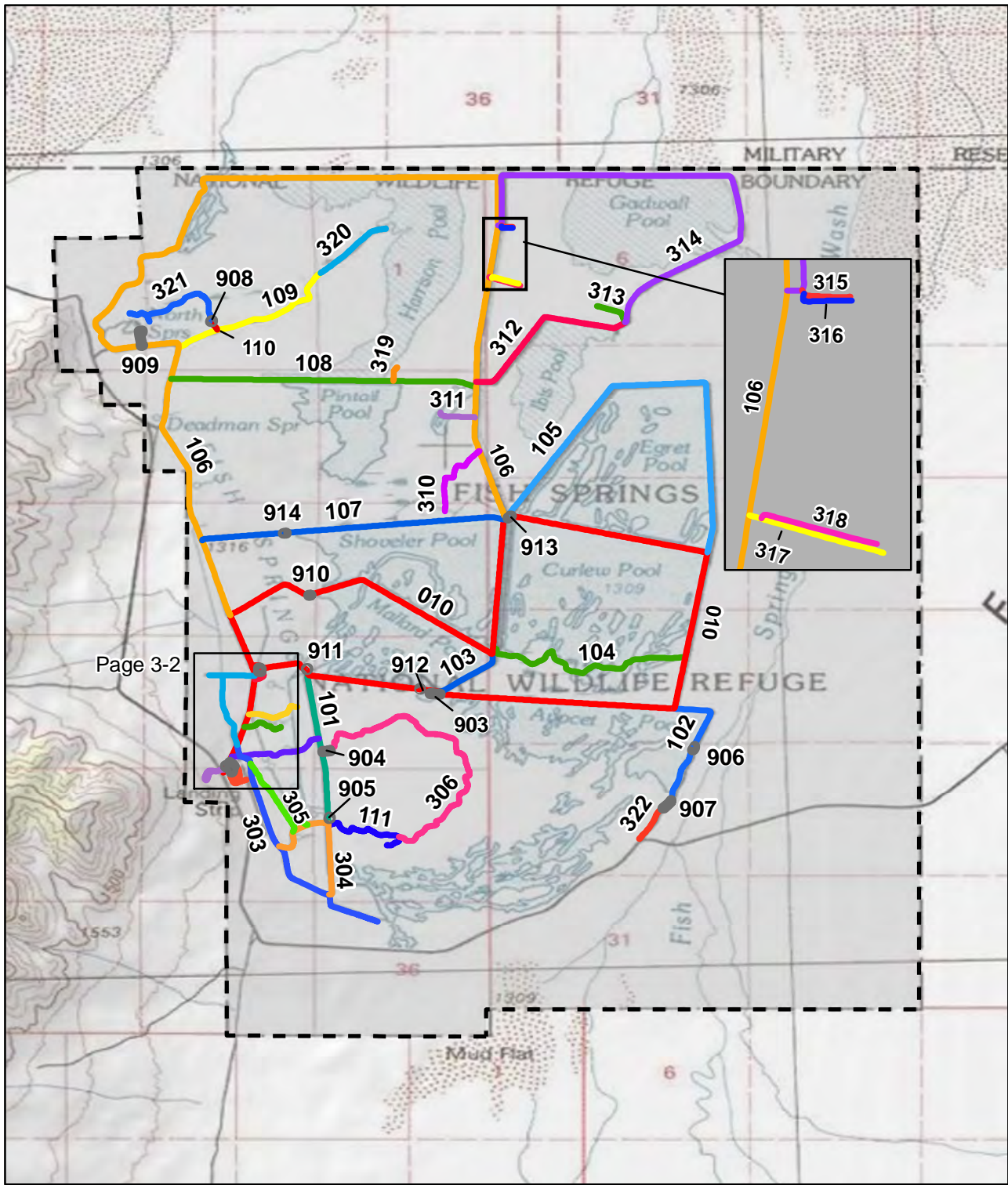
Summaries

Route Miles and Percentages by Use Type and Condition

USE TYPE	Road Condition Rating: Public/Administrative Use										TOTAL MILES	PERCENT TOTAL MILES
	Excellent		Good		Fair		Poor		Failed			
	MILES	%	MILES	%	MILES	%	MILES	%	MILES	%		
Public (FC I-III)	20.25	67.8%	5.38	18%	4.25	14.2%					29.87	66%
Admin (FC IV-V)	6.58	42.2%	3.37	21.7%	5.63	36.2%					15.58	34%
Totals	26.82	59.0%	8.75	19%	9.88	21.7%					45.45	

USE TYPE	Parking Condition Rating										Total Square Feet	PERCENT TOTAL SF
	Excellent		Good		Fair		Poor		Failed			
	Square Feet	%	Square Feet	%	Square Feet	%	Square Feet	%	Square Feet	%		
Public	768	1.0%	21825	27.2%	9822	12.3%	46186	57.6%	1575	2.0%	80176	83%
Admin	16213	100.0%									16213	17%
Totals	16981	17.6%	21825	22.6%	9822	10.2%	46186	47.9%	1575	1.6%	96389	

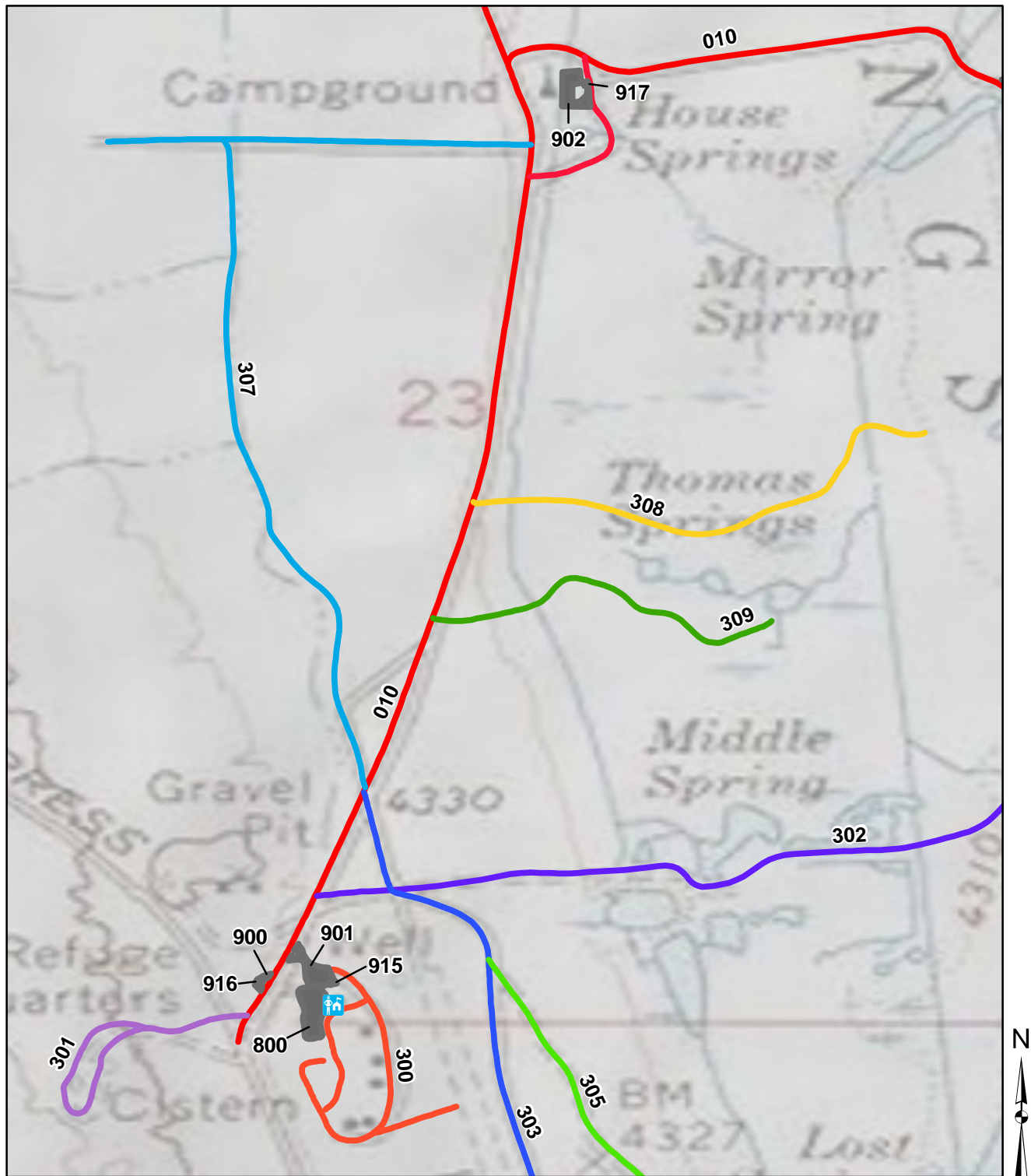
FISH SPRINGS NATIONAL WILDLIFE REFUGE ROUTE LOCATION MAP



Page 3-2



FISH SPRINGS NATIONAL WILDLIFE REFUGE ROUTE LOCATION MAP 2



ROUTE IDENTIFICATION LIST (NUMERIC)

Shading Color Key:	White = Paved Routes
	Yellow = Unpaved Routes

RTE #	Asset Number	ROUTE NAME	RTE MI	ROUTE DESCRIPTION	PAVED MI	UN-PAVED MI	LANES	FC
010	10034260	Auto Tour Route	9.06	From County Road to end of loop	-	9.06	1	1
100	10046011	Watchable Wildlife Area Access Road	0.13	From Auto Tour Route (Rte 010) to Auto Tour Route (Rte 010)	-	0.13	1	2
101	10034260	South Spring Road	1.13	From Auto Tour Route (Rte 010) to Spring Unit Road (Rte 305)	-	1.13	1	2
102	10034344	Avocet Pool Road	1.02	From Auto Tour Route (Rte 010) to Avocet Pool Administrative Road (Rte 323)	-	1.02	1	2
103	10034260	Mallard Pool Road	0.44	From Auto Tour Route (Rte 010) to Auto Tour Route (Rte 010)	-	0.44	1	2
104	<Null>	Curlew Pool Cutoff Road	1.37	From Auto Tour Route (Rte 010) to Auto Tour Route (Rte 010)	-	1.37	1	2
105	10034305	Egret Pool Road	2.97	From Auto Tour Route (Rte 010) to Auto Tour Route (Rte 010)	-	2.97	1	2
106	10034271	Harrison Pool Loop	8.42	From Auto Tour Route (Rte 010) to Auto Tour Route (Rte 010)	-	8.42	1	2
107	10034304	Shoveler Pool Cutoff Road	1.77	From Auto Tour Route (Rte 010) to Harrison Pool Loop (Rte 106)	-	1.77	1	2
108	10034306	Pintail Pool Cutoff Road	1.78	From Harrison Pool Loop (Rte 106) to Harrison Pool Loop (Rte 106)	-	1.78	1	2
109	10034342	Harrison Interior Road	1.09	From Harrison Pool Loop (Rte 106) to Harrison Interior Administrative Road (Rte 321)	-	1.09	1	2
110	10034342	Harrison Pool Parking Spur	0.08	From Harrison Interior Road (Rte 109) to Harrison Interior East Parking (Rte 908)	-	0.08	1	2
111	-	Special Hunting Blind Area Road	0.61	From Spring Unit Road (Rte 305) to end of route	-	0.61	1	2
300	10034391	Administrative Residential Road	0.42	From Headquarters Parking (Rte 901) to employee living quarters	-	0.42	1	4
301	10034301	Cistern Road	0.26	From Auto Tour Route (Rte 010) to end of route	-	0.26	1	4
302	10034301	Spring Unit Road #1	0.57	From Auto Tour Route (Rte 010) to South Spring Road (Rte 101)	-	0.57	1	4
303	10034301	Spring Unit Road #2	1.71	From Auto Tour Route (Rte 010) to end of route	-	1.71	1	4
304	10034301	Spring Unit Road #3	0.97	From Spring Unit Road (Rte 304) to Spring Unit Road (Rte 304)	-	0.97	1	4
305	10034301	Spring Unit Road #4	0.69	From Spring Unit Road (Rte 304) to Spring Unit Road (Rte 305)	-	0.69	1	4
306	10034342	Handicapped Blind Administrative Road	2.07	From Special Hunting Blind Area Road (Rte 111) to South Spring Road Parking #1 (Rte 904)	-	2.07	1	4
307	10034343	Boneyard Access Road	0.81	From Auto Tour Route (Rte 010) to Auto Tour Route (Rte 010)	-	0.81	1	4
308	10034301	Spring Unit Road #5	0.33	From Auto Tour Route (Rte 010) to end of route	-	0.33	1	4
309	10034301	Spring Unit Road #6	0.25	From Auto Tour Route (Rte 010) to end of route	-	0.25	1	4
310	10046011	Water Control Structure Route #1	0.58	From Harrison Pool Loop (Rte 106) to end of route	-	0.58	1	4
311	10046011	Water Control Structure Route #2	0.22	From Harrison Pool Loop (Rte 106) to end of route	-	0.22	1	4
312	10034308	Ibis Administrative Road	1.16	From Harrison Pool Loop (Rte 106) to Gadwall Dike Road (Rte 315)	-	1.16	1	4
313	10046011	G7 Access Road	0.23	From Ibis Administrative Road (Rte 313) to end of route	-	0.23	1	4

ROUTE IDENTIFICATION LIST (NUMERIC)

Shading Color Key:

White = Paved Routes
Yellow = Unpaved Routes

RTE #	Asset Number	ROUTE NAME	RTE MI	ROUTE DESCRIPTION	PAVED MI	UN-PAVED MI	LANES	FC
314	10034307	Gadwall Dike Road	3.17	From Ibis Administrative Road (Rte 313) to Harrison Pool Loop (Rte 106)	-	3.17	1	4
315	10046011	Water Control Structure Road #1	0.07	From Gadwall Dike Road (Rte 315) to end of route	-	0.07	1	4
316	10046011	Water Control Structure Road #2	0.08	From Water Control Structure Road #1 (Rte 316) to end of route	-	0.08	1	4
317	10046011	Water Control Structure Road #3	0.19	From Harrison Pool Loop (Rte 106) to end of route	-	0.19	1	4
318	10046011	Water Control Structure Road #4	0.17	From Water Control Structure Road #3 (Rte 318) to end of route	-	0.17	1	4
319	10046011	Water Control Structure Road #5	0.11	From Pintail Pool Cutoff Road (Rte 108) to end of route	-	0.11	1	4
320	10034342	Harrison Interior Administrative Road	0.52	From Harrison Interior Road (Rte 109) to end of route	-	0.52	1	4
321	10034342	Harrison Pool Administrative Spur	0.77	From Harrison Interior East Parking (Rte 908) to end of route	-	0.77	1	4
322	10034344	Avocet Pool Administrative Road	0.26	From end of Avocet Pool Road (Rte 102) to end of route	-	0.26	1	4

ROUTE IDENTIFICATION LIST (PARKING)

Shading Color Key:

Green = Unpaved Parking Lots

Blue = Paved Parking Lots

RTE #	ASSET NUMBER	ROUTE NAME	RTE SQFT	ROUTE DESCRIPTION	PAVED SQFT	UN-PAVED SQFT
800	10050852	Administrative Parking	16213		-	16213
900	10050852	Visitor Registration Parking	1246		-	1246
901	10050852	Headquarters Parking	9334		-	9334
902	10050853	Watchable Wildlife Area Parking	8877		-	8877
903	10050855	Auto Tour Route Parking	4811		-	4811
904	10050857	South Spring Road Parking #1	5749		-	5749
905	10050858	South Spring Road Parking #2	3479		-	3479
906	10050860	Avocet Pool Parking #1	5126		-	5126
907	10050861	Avocet Pool Parking #2	11245		-	11245
908	10050862	Harrison Interior East Parking	3605		-	3605
909	10050863	Harrison Interior West Parking	17230		-	17230
910	10050872	Mallard West Parking	1128		-	1128
911	10050872	Mallard Parking	2454		-	2454
912	10050872	Mallard South Parking	945		-	945
913	10050873	Curlew Northwest Parking	2604		-	2604
914	10050873	Shoveler Pool Parking	1575		-	1575
915	10050852	Headquarters Handicapped Parking	301		301	-
916	10050852	Vistor Registration Handicapped Parking	200		200	-
917	10050853	Watchable Wildlife Area Handicapped Parking	267		267	-

CHANGES TO THE FISH AND WILDLIFE SERVICE ROAD INVENTORY REPORT

Routes added to previous inventory: No routes added to previous inventory.

	Rte #	Rte Name	
1.			Rte Desc:
			Reason for Addition:
2.			Rte Desc:
			Reason for Addition:
3.			Rte Desc:
			Reason for Addition:

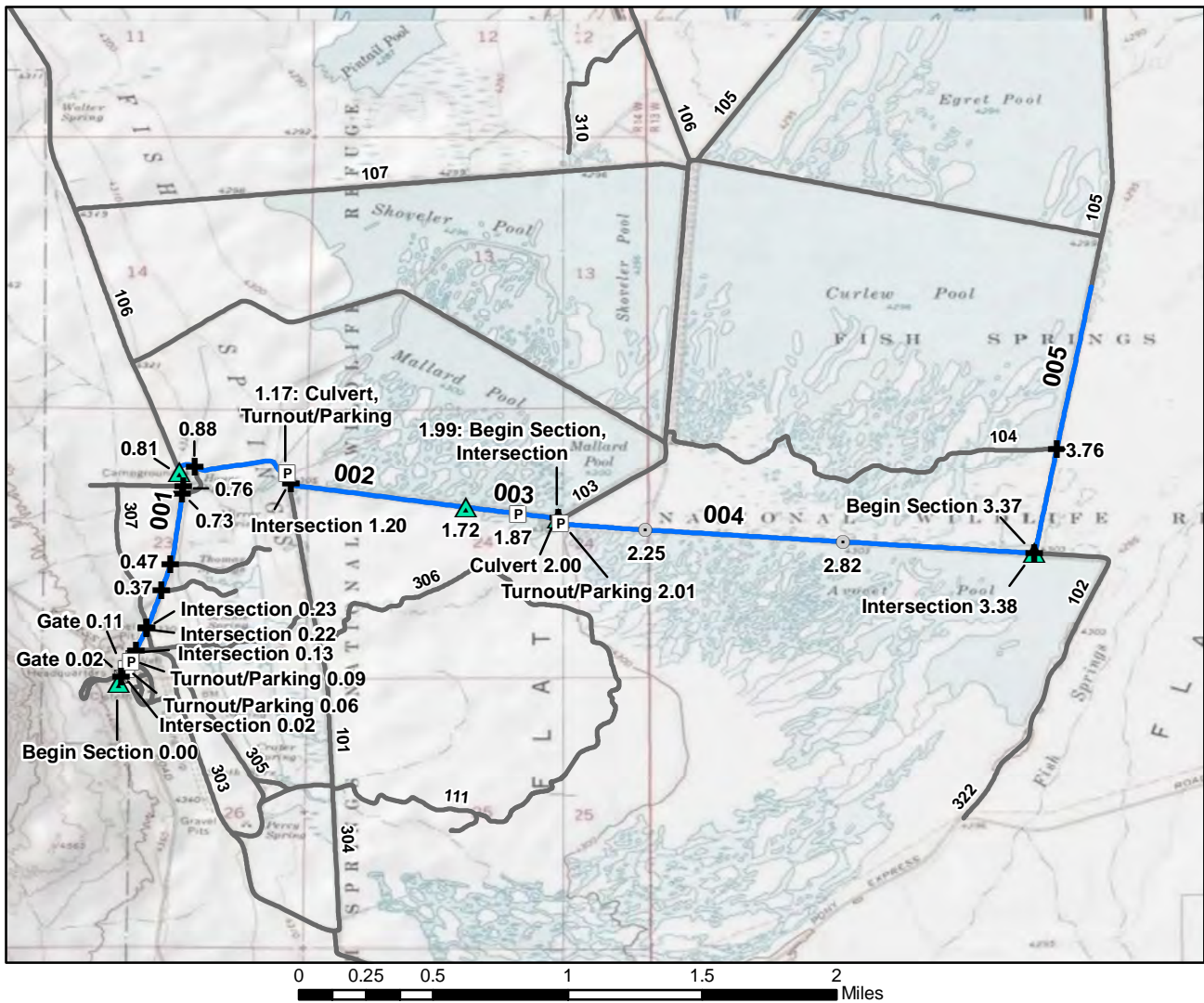
Routes removed from previous inventory: No routes removed from previous inventory.

	Rte #	Rte Name	
1.			Rte Desc:
			Reason for Removal:
2.			Rte Desc:
			Reason for Removal:
3.			Rte Desc:
			Reason for Removal:

Routes modified from previous inventory: No routes modified from previous inventory.

	Rte #	Rte Name	
1.			Rte Desc:
			Modification:
2.			Rte Desc:
			Modification:
3.			Rte Desc:
			Modification:

Comments:



█ Excellent
 █ Good
 █ Fair
 █ Poor
 █ Failed

⚡ Bridge
 ⌘ Gate
 ○ Culvert
 * Deficiency
 ✖ Railroad Crossing
 🗺 Visitor Center

▲ Begin Section
 ⌋ Low Water Crossing
 + Intersection
 ✖ Problem Area

🚤 Boat Ramp
 🏠 Fee Station
 ⚓ Political Boundary
 P Turnout/Parking

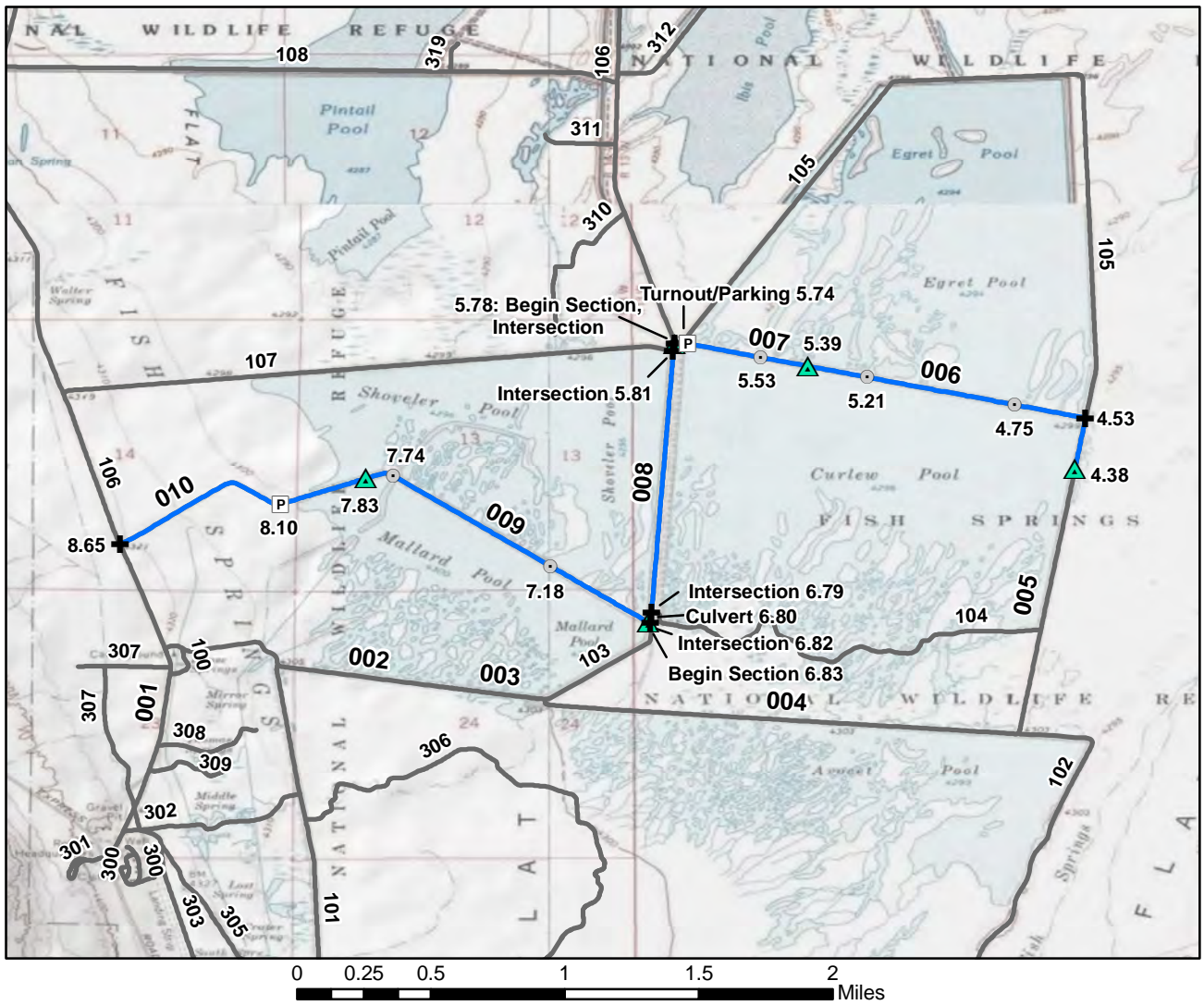
ROUTE: 010 Auto Tour Route

TOTAL LENGTH: 9.06 Miles

ASSET: 10034260

RTE DESCRIPTION: From County Road to end of loop

Section Number	001	002	003	004	005
Section Length (miles)	0.81	0.91	0.27	1.38	1.00
Inspection Date	4/21/2008	4/21/2008	4/21/2008	4/21/2008	4/21/2008
Section Information					
Surface Type	Gravel	Gravel	Gravel	Gravel	Gravel
Number of Lanes	1	1	2	1	2
Roadway Width (feet)	12	12	20	12	20
Roadway Condition Information					
Condition	Excellent	Excellent	Excellent	Excellent	Excellent
Remaining Service Life (years)	8	9	9	8	8
Cost Estimate	\$0	\$0	\$0	\$0	\$0
CRV	\$558400	\$626400	\$184900	\$950700	\$689200



Excellent	Good	Fair	Poor	Failed
Bridge	Gate	Culvert	Deficiency	Visitor Center
Begin Section	Low Water Crossing	Intersection	Railroad Crossing	Problem Area
Boat Ramp	Fee Station	Political Boundary	Turnout/Parking	

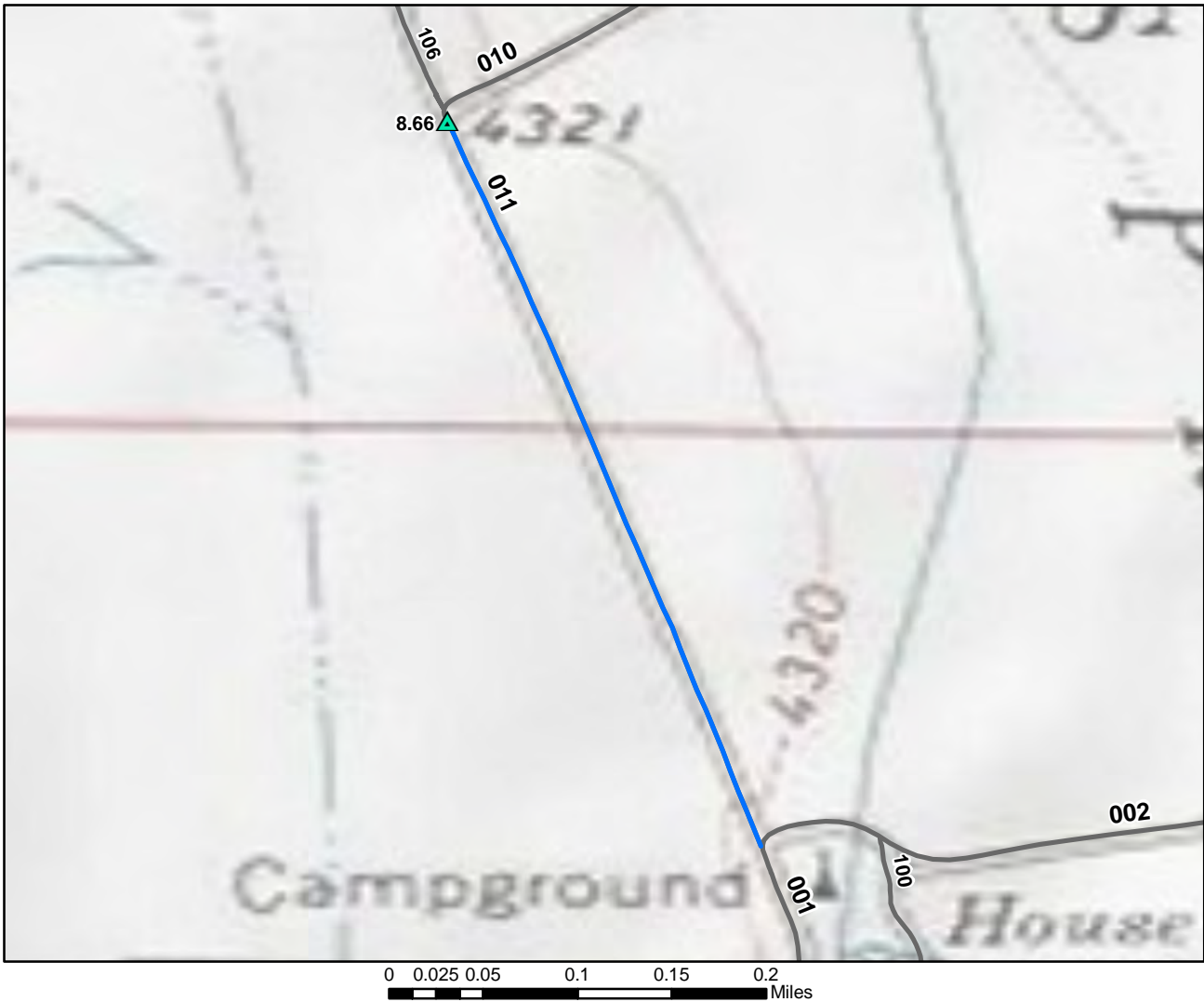
ROUTE: 010 Auto Tour Route

TOTAL LENGTH: 9.06 Miles

ASSET: 10034260

RTE DESCRIPTION: From County Road to end of loop

	006	007	008	009	010
Section Number	006	007	008	009	010
Section Length (miles)	1.01	0.39	1.05	1.00	0.83
Inspection Date	4/21/2008	4/21/2008	4/21/2008	4/21/2008	4/21/2008
Section Information					
Surface Type	Gravel	Gravel	Gravel	Gravel	Gravel
Number of Lanes	2	1	1	2	1
Roadway Width (feet)	20	12	11	20	12
Roadway Condition Information					
Condition	Excellent	Excellent	Excellent	Excellent	Excellent
Remaining Service Life (years)	8	8	9	9	8
Cost Estimate	\$0	\$0	\$0	\$0	\$0
CRV	\$695400	\$270000	\$721200	\$687000	\$570700



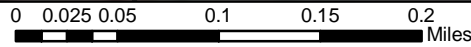
Excellent	Good	Fair	Poor	Failed
Bridge	Gate	Culvert	Deficiency	Visitor Center
Begin Section	Low Water Crossing	Intersection	Railroad Crossing	Turnout/Parking
Boat Ramp	Fee Station	Political Boundary	Problem Area	

ROUTE: 010 Auto Tour Route TOTAL LENGTH: 9.06 Miles

ASSET: 10034260

RTE DESCRIPTION: From County Road to end of loop

Section Number	011			
Section Length (miles)	0.41			
Inspection Date	4/21/2008			
Section Information				
Surface Type	Gravel			
Number of Lanes	1			
Roadway Width (feet)	12			
Roadway Condition Information				
Condition	Excellent			
Remaining Service Life (years)	8			
Cost Estimate	\$0			
CRV	\$278800			



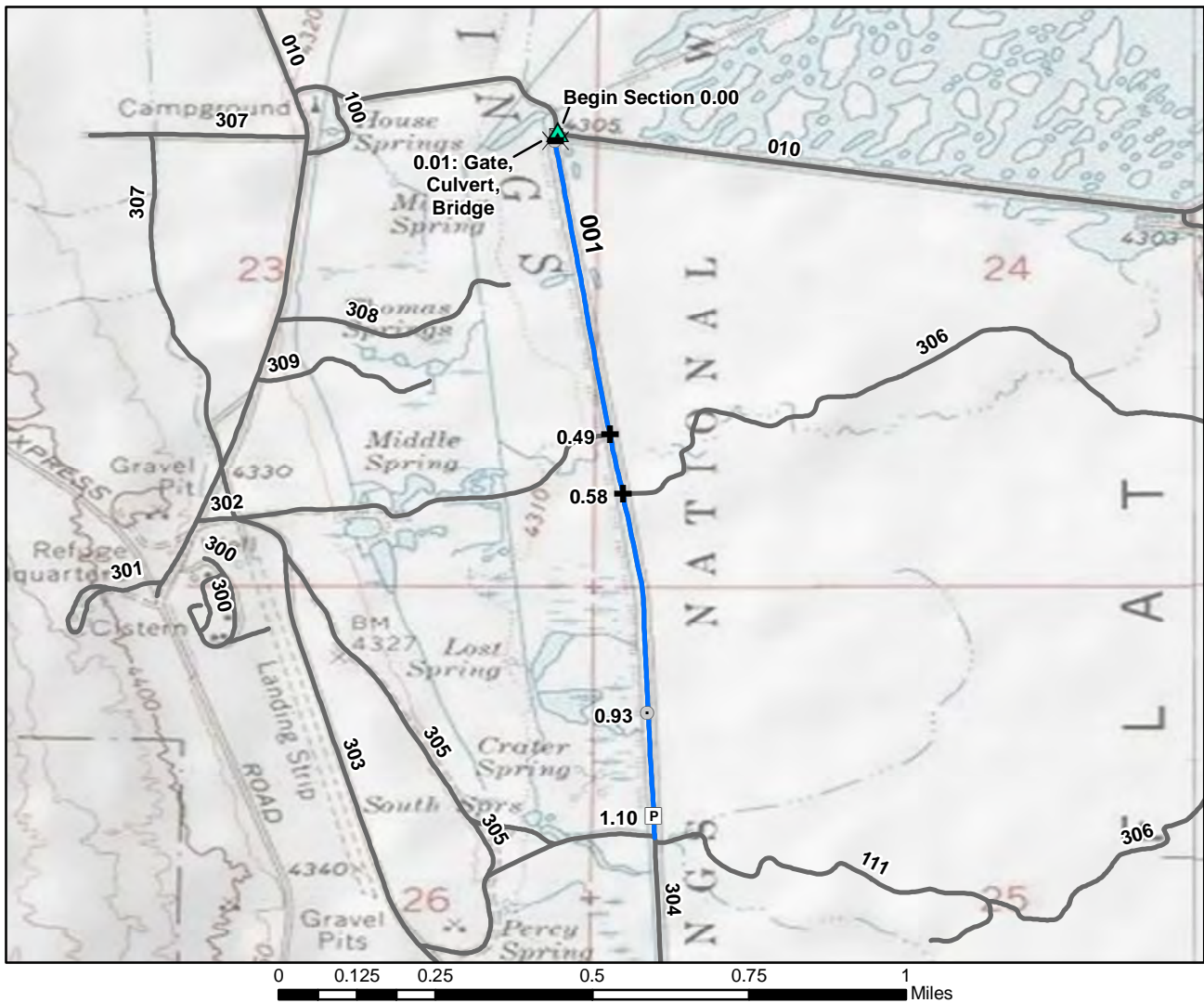
Excellent	Good	Fair	Poor	Failed
Bridge	Gate	Culvert	Deficiency	Visitor Center
Begin Section	Low Water Crossing	Intersection	Railroad Crossing	Turnout/Parking
Boat Ramp	Fee Station	Political Boundary	Problem Area	

ROUTE: 100 Watchable Wildlife Area Access Road TOTAL LENGTH: 0.13 Miles

ASSET: 10046011

RTE DESCRIPTION: From Auto Tour Route (Rte 010) to Auto Tour Route (Rte 010)

Section Number	001			
Section Length (miles)	0.13			
Inspection Date	4/21/2008			
Section Information				
Surface Type	Gravel			
Number of Lanes	1			
Roadway Width (feet)	12			
Roadway Condition Information				
Condition	Excellent			
Remaining Service Life (years)	8			
Cost Estimate	\$0			
CRV	\$92800			



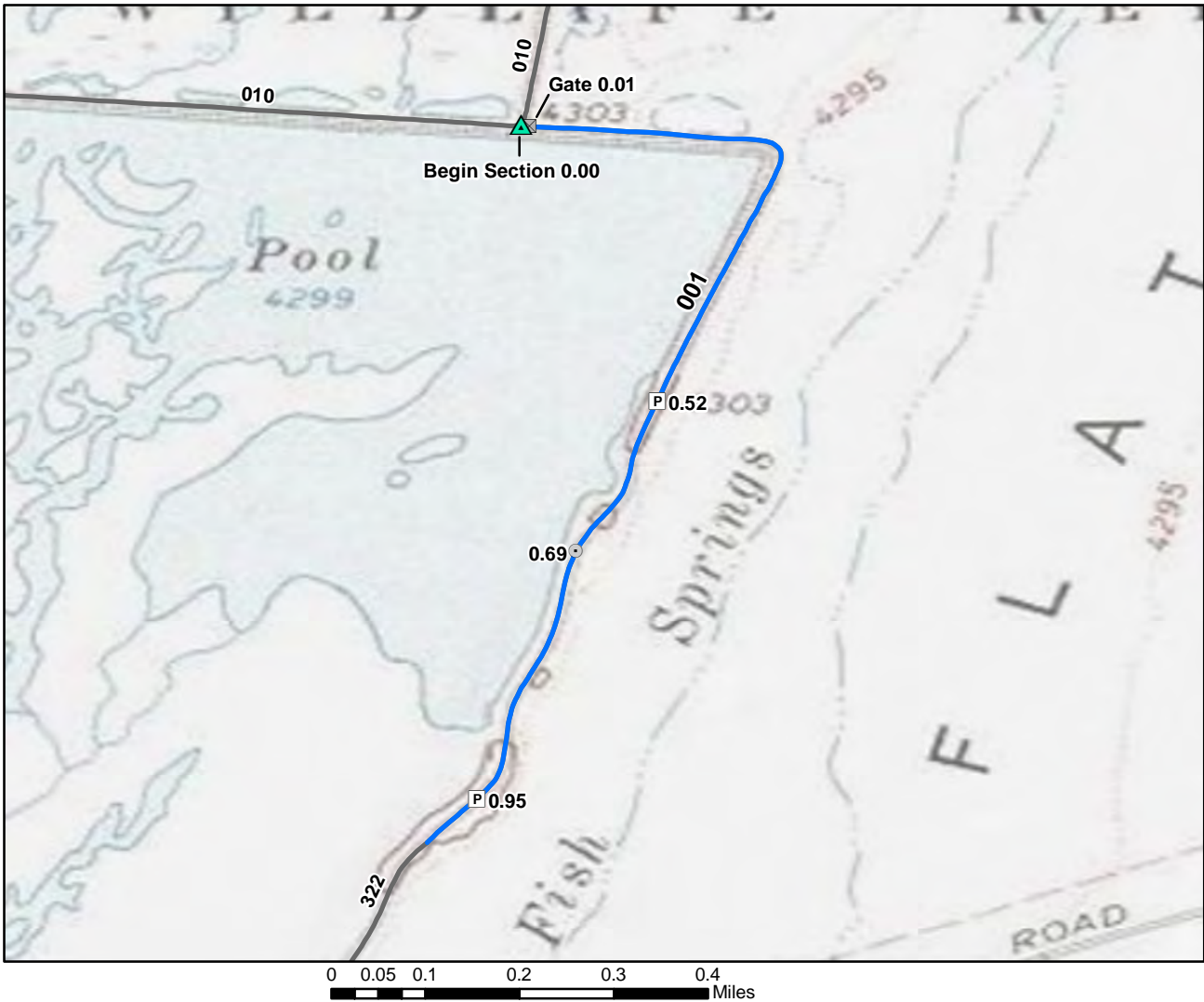
Excellent	Good	Fair	Poor	Failed
Bridge	Gate	Culvert	Deficiency	Visitor Center
Begin Section	Low Water Crossing	Intersection	Railroad Crossing	Problem Area
Boat Ramp	Fee Station	Political Boundary	Turnout/Parking	

ROUTE: 101 South Spring Road TOTAL LENGTH: 1.13 Miles

ASSET: 10034260

RTE DESCRIPTION: From Auto Tour Route (Rte 010) to Spring Unit Road (Rte 305)

Section Number	001			
Section Length (miles)	1.13			
Inspection Date	4/21/2008			
Section Information				
Surface Type	Gravel			
Number of Lanes	1			
Roadway Width (feet)	14			
Roadway Condition Information				
Condition	Excellent			
Remaining Service Life (years)	8			
Cost Estimate	\$0			
CRV	\$778800			



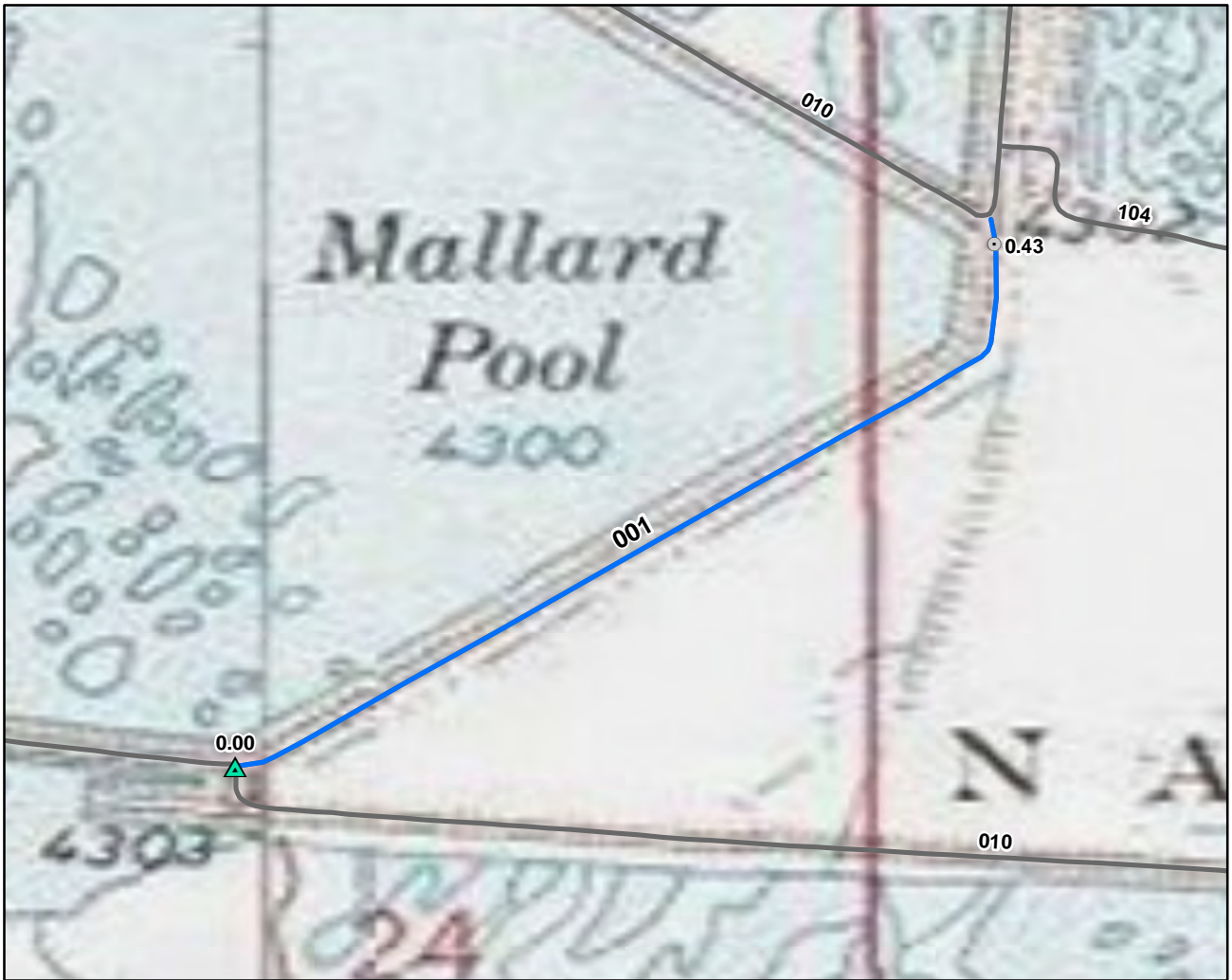
Excellent	Good	Fair	Poor	Failed
Bridge	Gate	Culvert	Deficiency	Visitor Center
Begin Section	Low Water Crossing	Intersection	Railroad Crossing	Turnout/Parking
Boat Ramp	Fee Station	Political Boundary	Problem Area	

ROUTE: 102 Avocet Pool Road TOTAL LENGTH: 1.02 Miles

ASSET: 10034344

RTE DESCRIPTION: From Auto Tour Route (Rte 010) to Avocet Pool Administrative Road (Rte 323)

Section Number	001			
Section Length (miles)	1.02			
Inspection Date	4/23/2008			
Section Information				
Surface Type	Gravel			
Number of Lanes	1			
Roadway Width (feet)	12			
Roadway Condition Information				
Condition	Excellent			
Remaining Service Life (years)	9			
Cost Estimate	\$0			
CRV	\$698700			



0 0.0375 0.075 0.15 0.225 0.3 Miles

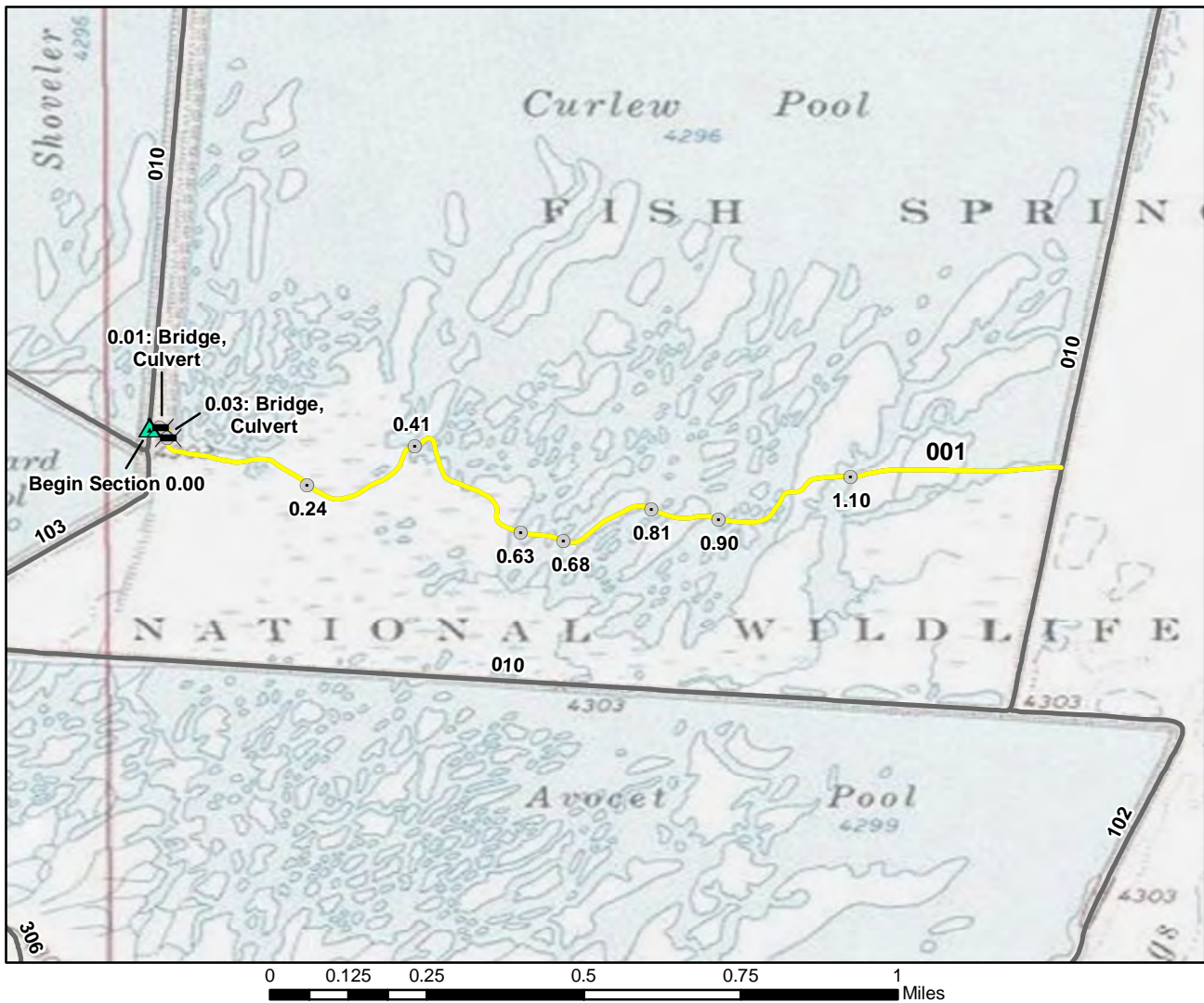
Excellent	Good	Fair	Poor	Failed
Bridge	Gate	Culvert	Deficiency	Visitor Center
Begin Section	Low Water Crossing	Intersection	Railroad Crossing	Turnout/Parking
Boat Ramp	Fee Station	Political Boundary	Problem Area	

ROUTE: 103 Mallard Pool Road TOTAL LENGTH: 0.44 Miles

ASSET: 10034260

RTE DESCRIPTION: From Auto Tour Route (Rte 010) to Auto Tour Route (Rte 010)

Section Number	001				
Section Length (miles)	0.44				
Inspection Date	4/23/2008				
Section Information					
Surface Type	Gravel				
Number of Lanes	1				
Roadway Width (feet)	12				
Roadway Condition Information					
Condition	Excellent				
Remaining Service Life (years)	8				
Cost Estimate	\$0				
CRV	\$303400				



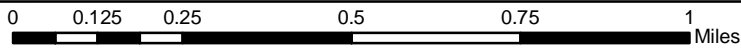
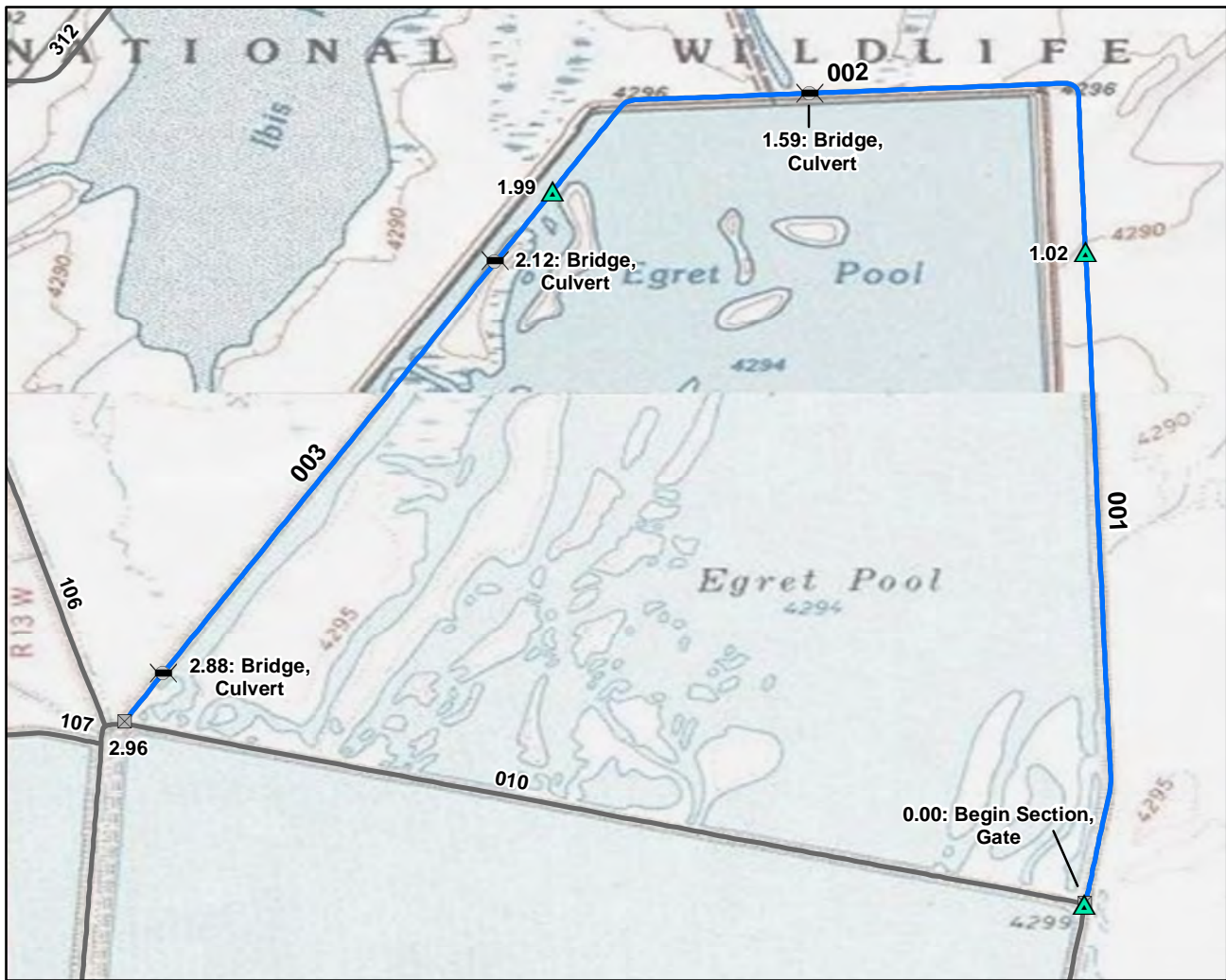
Excellent	Good	Fair	Poor	Failed
Bridge	Gate	Culvert	Deficiency	Visitor Center
Begin Section	Low Water Crossing	Intersection	Railroad Crossing	Turnout/Parking
Boat Ramp	Fee Station	Political Boundary	Problem Area	

ROUTE: 104 Curlew Pool Cutoff Road TOTAL LENGTH: 1.37 Miles

ASSET: <Null>

RTE DESCRIPTION: From Auto Tour Route (Rte 010) to Auto Tour Route (Rte 010)

Section Number	001				
Section Length (miles)	1.37				
Inspection Date	4/23/2008				
Section Information					
Surface Type	Gravel				
Number of Lanes	1				
Roadway Width (feet)	10				
Roadway Condition Information					
Condition	Fair				
Remaining Service Life (years)	4				
Cost Estimate	\$4900				
CRV	\$944700				



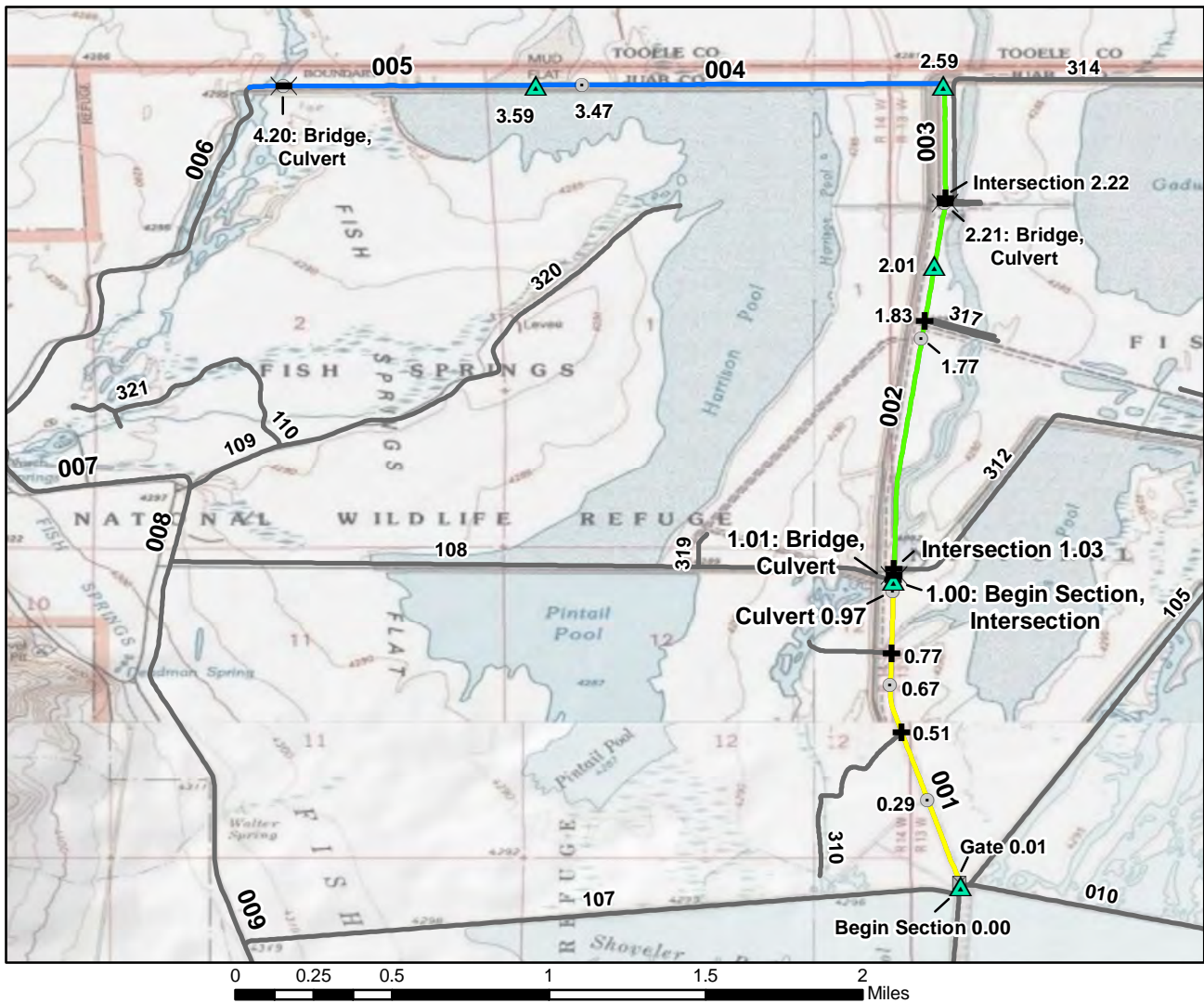
Excellent	Good	Fair	Poor	Failed
Bridge	Gate	Culvert	Deficiency	Visitor Center
Begin Section	Low Water Crossing	Intersection	Railroad Crossing	Turnout/Parking
Boat Ramp	Fee Station	Political Boundary	Problem Area	

ROUTE: 105 Egret Pool Road TOTAL LENGTH: 2.97 Miles

ASSET: 10034305

RTE DESCRIPTION: From Auto Tour Route (Rte 010) to Auto Tour Route (Rte 010)

	001	002	003
Section Number	001	002	003
Section Length (miles)	1.02	0.96	0.98
Inspection Date	4/22/2008	4/22/2008	4/22/2008
Section Information			
Surface Type	Gravel	Gravel	Gravel
Number of Lanes	1	1	1
Roadway Width (feet)	11	12	11
Roadway Condition Information			
Condition	Excellent	Excellent	Excellent
Remaining Service Life (years)	9	9	10
Cost Estimate	\$0	\$0	\$0
CRV	\$704300	\$663200	\$675500



	Excellent		Good		Fair		Poor		Failed
	Bridge		Gate		Culvert		Deficiency		Railroad Crossing
	Begin Section		Low Water Crossing		Intersection		Visitor Center		Turnout/Parking
	Boat Ramp		Fee Station		Political Boundary		Problem Area		

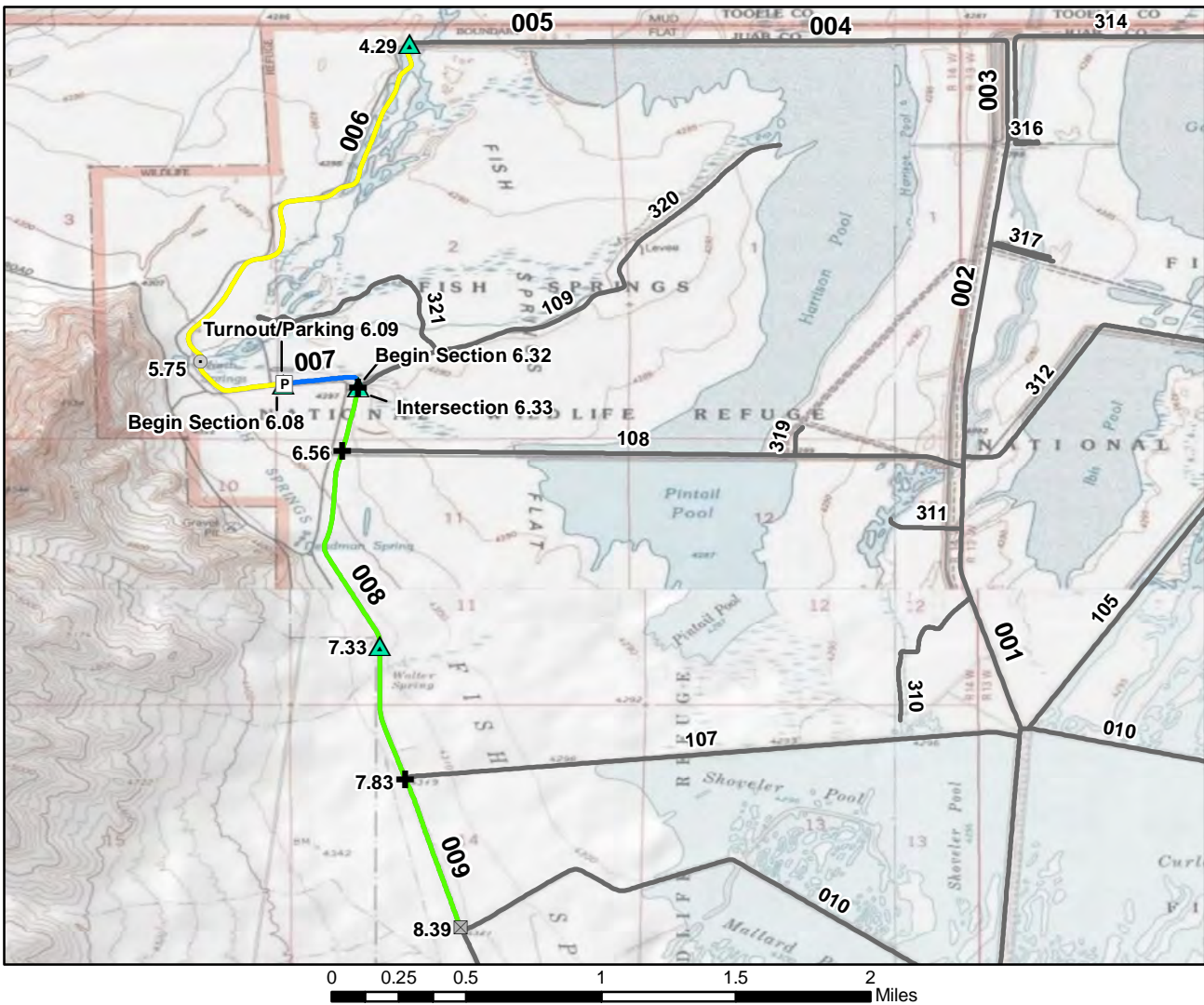
ROUTE: 106 Harrison Pool Loop

TOTAL LENGTH: 8.42 Miles

ASSET: 10034271

RTE DESCRIPTION: From Auto Tour Route (Rte 010) to Auto Tour Route (Rte 010)

Section Number	001	002	003	004	005
Section Length (miles)	1.00	1.01	0.58	1.00	0.70
Inspection Date	4/22/2008	4/22/2008	4/22/2008	4/22/2008	4/22/2008
Section Information					
Surface Type	Gravel	Gravel	Gravel	Gravel	Gravel
Number of Lanes	1	1	1	1	1
Roadway Width (feet)	12	12	12	12	12
Roadway Condition Information					
Condition	Fair	Good	Good	Excellent	Excellent
Remaining Service Life (years)	4	7	7	9	9
Cost Estimate	\$3600	\$1600	\$900	\$0	\$0
CRV	\$687900	\$691400	\$398300	\$687900	\$483400

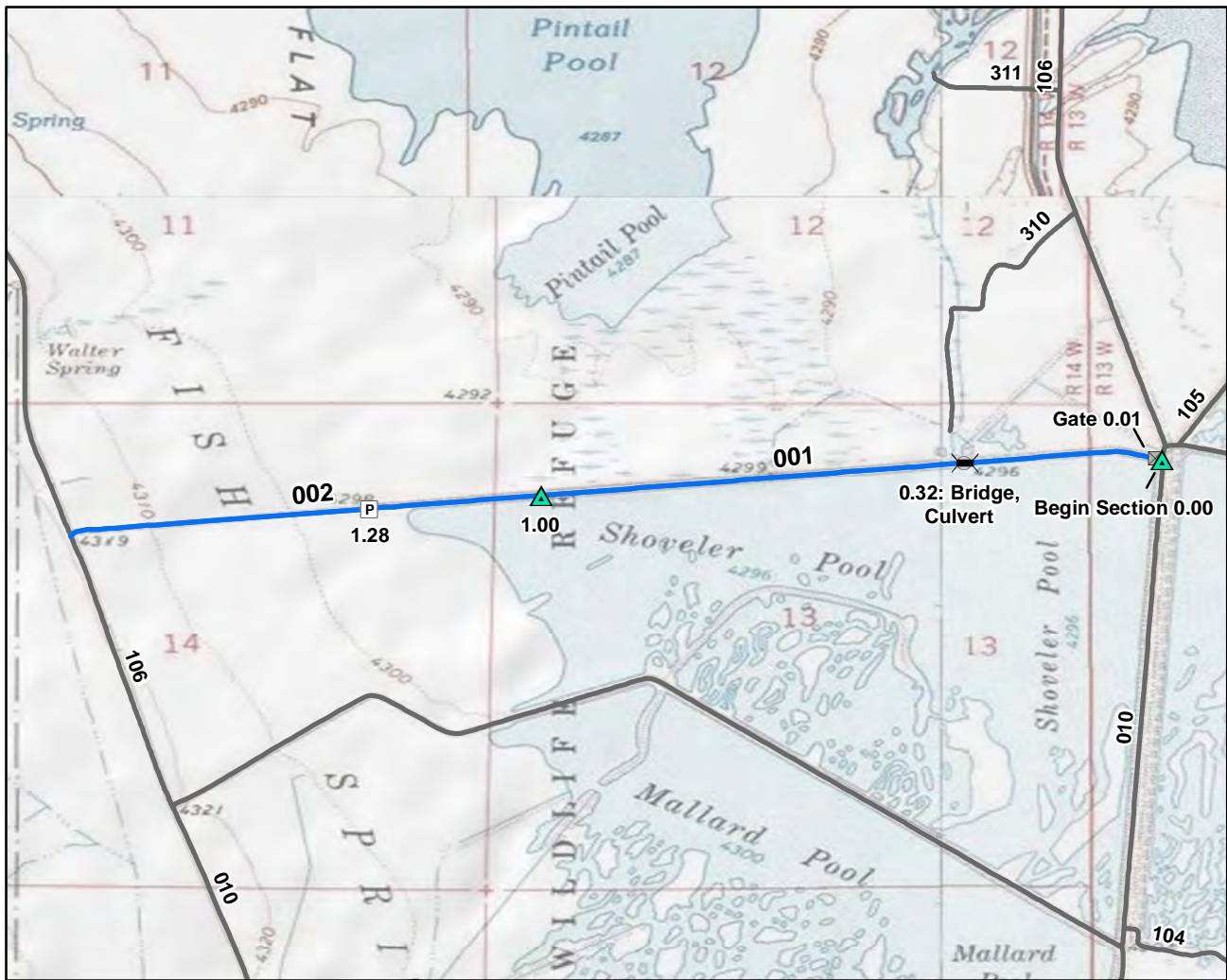


	Excellent		Good		Fair		Poor		Failed
	Bridge		Gate		Culvert		Deficiency		Railroad Crossing
	Begin Section		Low Water Crossing		Intersection		Visitor Center		Turnout/Parking
	Boat Ramp		Fee Station		Political Boundary		Problem Area		

ROUTE: 106 Harrison Pool Loop TOTAL LENGTH: 8.42 Miles
 ASSET: 10034271

RTE DESCRIPTION: From Auto Tour Route (Rte 010) to Auto Tour Route (Rte 010)

Section Number	006	007	008	009
Section Length (miles)	1.79	0.24	1.01	1.09
Inspection Date	4/23/2008	4/23/2008	4/23/2008	4/23/2008
Section Information				
Surface Type	Gravel	Gravel	Gravel	Gravel
Number of Lanes	1	1	1	1
Roadway Width (feet)	12	12	12	12
Roadway Condition Information				
Condition	Fair	Excellent	Good	Good
Remaining Service Life (years)	4	9	7	7
Cost Estimate	\$6400	\$0	\$1600	\$1800
CRV	\$1234000	\$166000	\$691700	\$748100



0 0.125 0.25 0.5 0.75 1 Miles

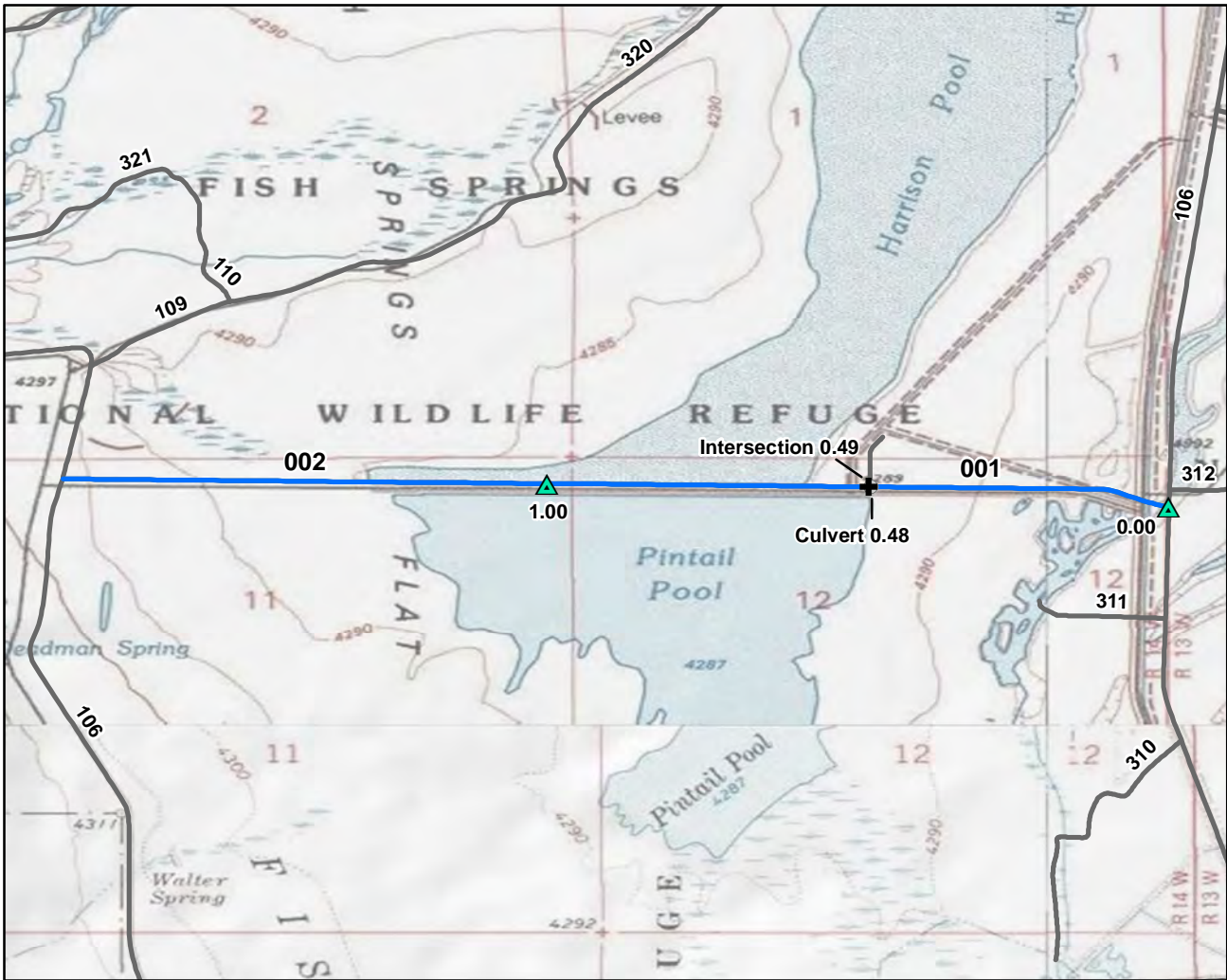
Excellent	Good	Fair	Poor	Failed
Bridge	Gate	Culvert	Deficiency	Visitor Center
Begin Section	Low Water Crossing	Intersection	Railroad Crossing	Turnout/Parking
Boat Ramp	Fee Station	Political Boundary	Problem Area	

ROUTE: 107 Shoverler Pool Cutoff Road TOTAL LENGTH: 1.77 Miles

ASSET: 10034304

RTE DESCRIPTION: From Auto Tour Route (Rte 010) to Harrison Pool Loop (Rte 106)

Section Number	001	002		
Section Length (miles)	1.00	0.76		
Inspection Date	4/21/2008	4/22/2008		
Section Information				
Surface Type	Gravel	Gravel		
Number of Lanes	1	1		
Roadway Width (feet)	11	11		
Roadway Condition Information				
Condition	Excellent	Excellent		
Remaining Service Life (years)	10	9		
Cost Estimate	\$0	\$0		
CRV	\$690300	\$524500		



Excellent	Good	Fair	Poor	Failed
Bridge	Gate	Culvert	Deficiency	Visitor Center
Begin Section	Low Water Crossing	Intersection	Railroad Crossing	Turnout/Parking
Boat Ramp	Fee Station	Political Boundary	Problem Area	

ROUTE: 108 Pintail Pool Cutoff Road TOTAL LENGTH: 1.78 Miles

ASSET: 10034306

RTE DESCRIPTION: From Harrison Pool Loop (Rte 106) to Harrison Pool Loop (Rte 106)

	001	002			
Section Number	001	002			
Section Length (miles)	1.00	0.78			
Inspection Date	4/22/2008	4/22/2008			
Section Information					
Surface Type	Gravel	Gravel			
Number of Lanes	1	1			
Roadway Width (feet)	12	12			
Roadway Condition Information					
Condition	Excellent	Excellent			
Remaining Service Life (years)	9	8			
Cost Estimate	\$0	\$0			
CRV	\$689400	\$533700			



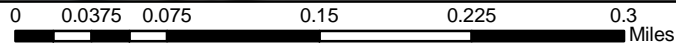
Excellent	Good	Fair	Poor	Failed
Bridge	Gate	Culvert	Deficiency	Visitor Center
Begin Section	Low Water Crossing	Intersection	Railroad Crossing	Turnout/Parking
Boat Ramp	Fee Station	Political Boundary	Problem Area	

ROUTE: 109 Harrison Interior Road TOTAL LENGTH: 1.09 Miles

ASSET: 10034342

RTE DESCRIPTION: From Harrison Pool Loop (Rte 106) to Harrison Interior Administrative Road (Rte 321)

Section Number	001				
Section Length (miles)	1.09				
Inspection Date	4/22/2008				
Section Information					
Surface Type	Gravel				
Number of Lanes	1				
Roadway Width (feet)	12				
Roadway Condition Information					
Condition	Good				
Remaining Service Life (years)	5				
Cost Estimate	\$1800				
CRV	\$748500				



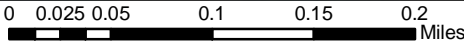
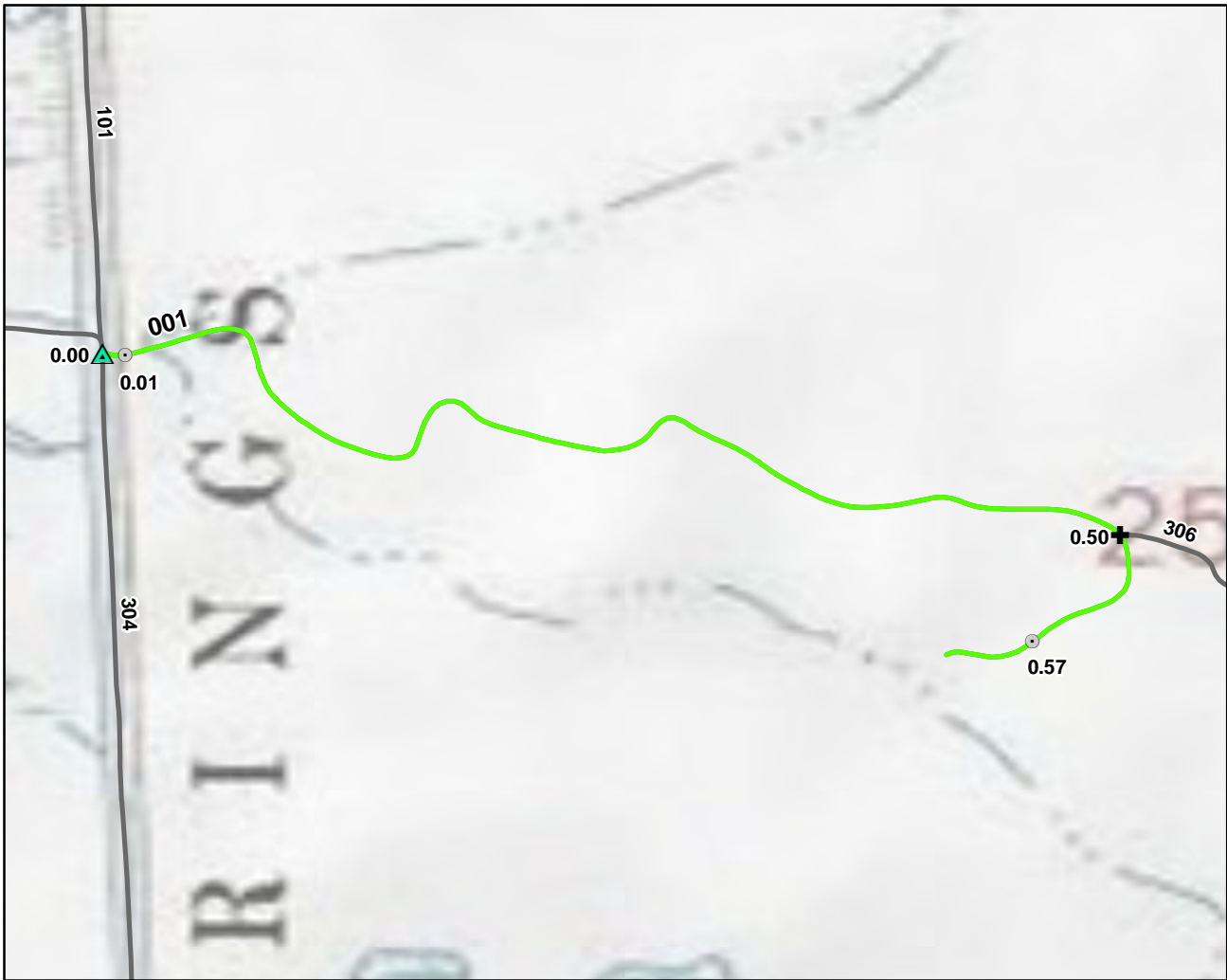
Excellent	Good	Fair	Poor	Failed
Bridge	Gate	Culvert	Deficiency	Visitor Center
Begin Section	Low Water Crossing	Intersection	Railroad Crossing	Problem Area
Boat Ramp	Fee Station	Political Boundary	Turnout/Parking	

ROUTE: 110 Harrison Pool Parking Spur TOTAL LENGTH: 0.08 Miles

ASSET: 10034342

RTE DESCRIPTION: From Harrison Interior Road (Rte 109) to Harrison Interior East Parking (Rte 908)

Section Number	001				
Section Length (miles)	0.08				
Inspection Date	4/22/2008				
Section Information					
Surface Type	Gravel				
Number of Lanes	1				
Roadway Width (feet)	12				
Roadway Condition Information					
Condition	Fair				
Remaining Service Life (years)	4				
Cost Estimate	\$300				
CRV	\$54100				



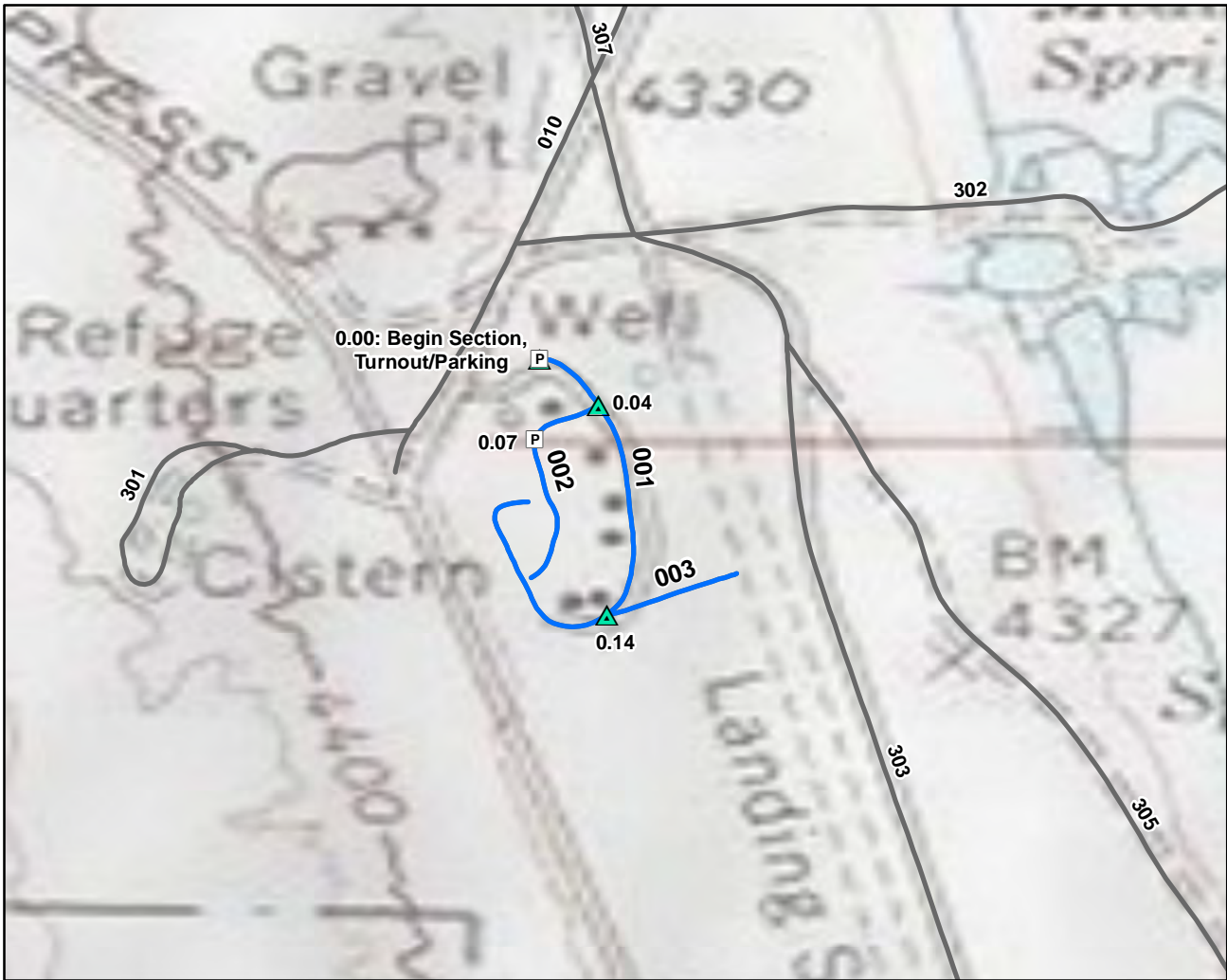
Excellent	Good	Fair	Poor	Failed
Bridge	Gate	Culvert	Deficiency	Visitor Center
Begin Section	Low Water Crossing	Intersection	Railroad Crossing	Turnout/Parking
Boat Ramp	Fee Station	Political Boundary	Problem Area	

ROUTE: 111 Special Hunting Blind Area Road TOTAL LENGTH: 0.61 Miles

ASSET:

RTE DESCRIPTION: From Spring Unit Road (Rte 305) to end of route

Section Number	001				
Section Length (miles)	0.61				
Inspection Date	4/21/2008				
Section Information					
Surface Type	Gravel				
Number of Lanes	1				
Roadway Width (feet)	8				
Roadway Condition Information					
Condition	Good				
Remaining Service Life (years)	7				
Cost Estimate	\$1000				
CRV	\$420000				



0 0.0375 0.075 0.15 0.225 0.3 Miles

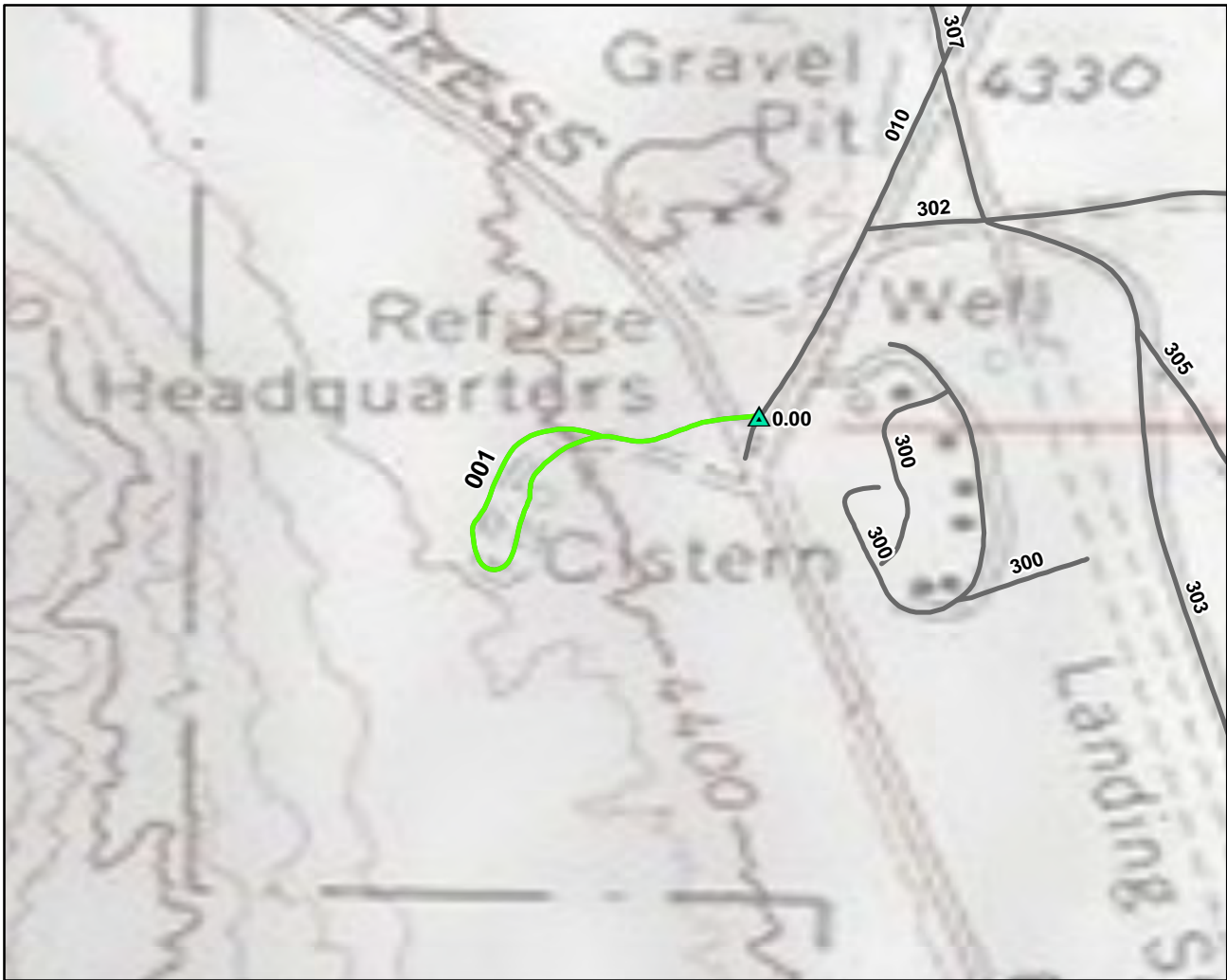
Excellent	Good	Fair	Poor	Failed
Bridge	Gate	Culvert	Deficiency	Visitor Center
Begin Section	Low Water Crossing	Intersection	Railroad Crossing	Turnout/Parking
Boat Ramp	Fee Station	Political Boundary	Problem Area	

ROUTE: 300 Administrative Residential Road TOTAL LENGTH: 0.42 Miles

ASSET: 10034391

RTE DESCRIPTION: From Headquarters Parking (Rte 901) to employee living quarters

Section Number	001	002	003		
Section Length (miles)	0.25	0.11	0.06		
Inspection Date	4/22/2008	4/22/2008	4/22/2008		
Section Information					
Surface Type	Gravel	Gravel	Gravel		
Number of Lanes	1	1	1		
Roadway Width (feet)	12	12	12		
Roadway Condition Information					
Condition	Excellent	Excellent	Excellent		
Remaining Service Life (years)	9	9	9		
Cost Estimate	\$0	\$0	\$0		
CRV	\$172500	\$74600	\$38900		



0 0.025 0.05 0.1 0.15 0.2 Miles

Excellent	Good	Fair	Poor	Failed
Bridge	Gate	Culvert	Deficiency	Visitor Center
Begin Section	Low Water Crossing	Intersection	Railroad Crossing	Turnout/Parking
Boat Ramp	Fee Station	Political Boundary	Problem Area	

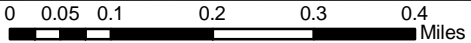
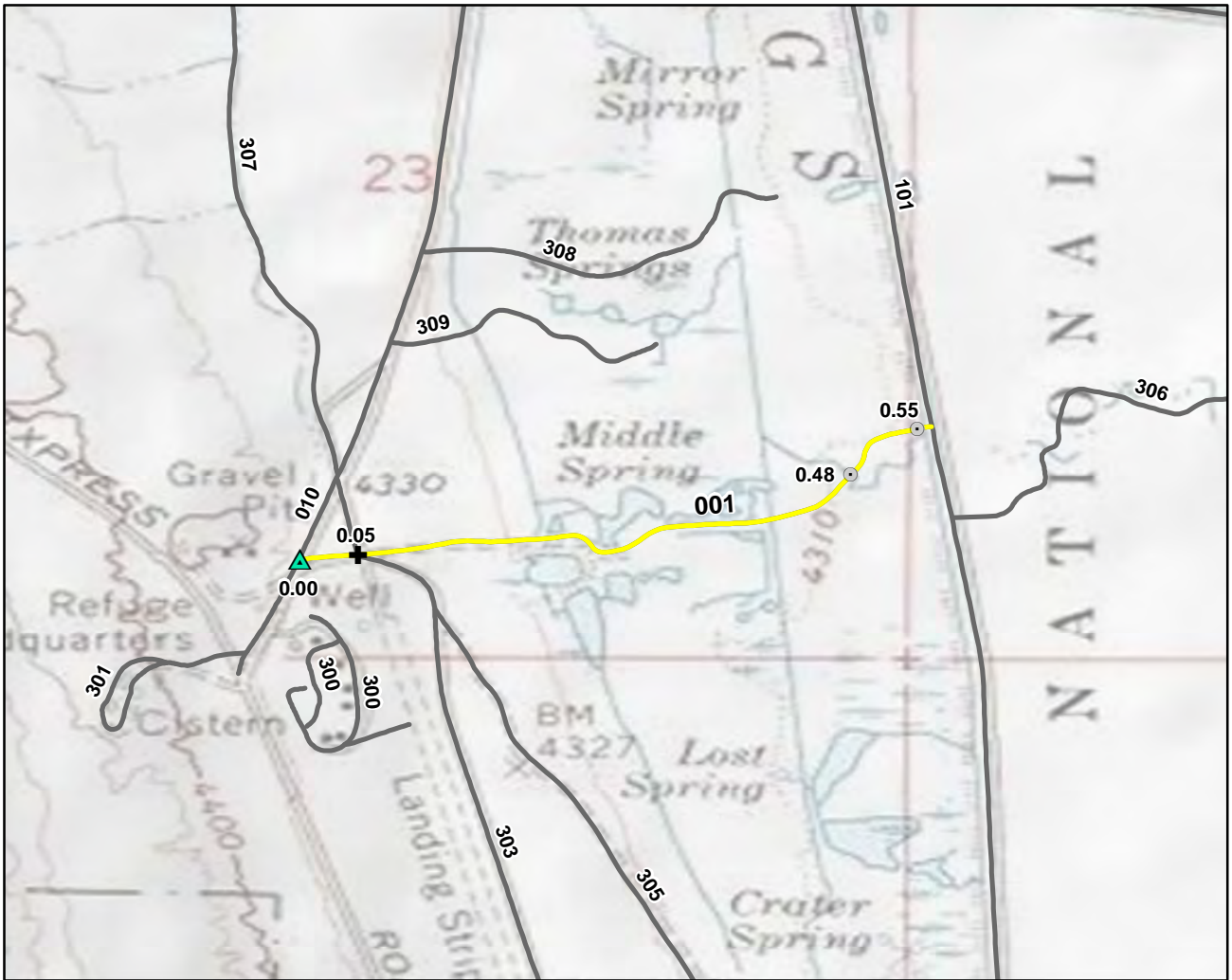
ROUTE: 301 Cistern Road

TOTAL LENGTH: 0.26 Miles

ASSET: 10034301

RTE DESCRIPTION: From Auto Tour Route (Rte 010) to end of route

Section Number	001				
Section Length (miles)	0.26				
Inspection Date	4/22/2008				
Section Information					
Surface Type	Native				
Number of Lanes	1				
Roadway Width (feet)	10				
Roadway Condition Information					
Condition	Good				
Remaining Service Life (years)	5				
Cost Estimate	\$500				
CRV	\$93700				



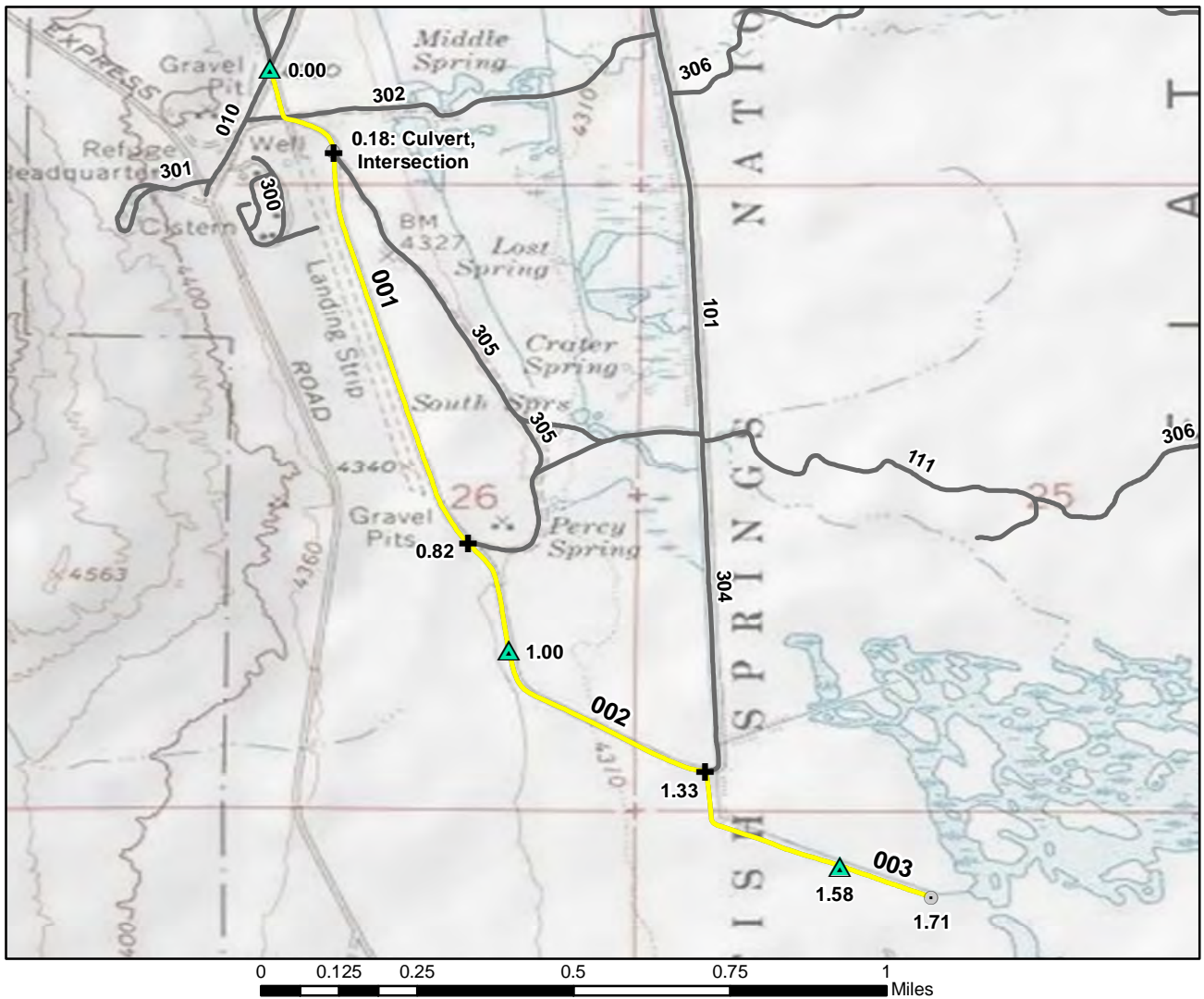
Excellent	Good	Fair	Poor	Failed
Bridge	Gate	Culvert	Deficiency	Visitor Center
Begin Section	Low Water Crossing	Intersection	Railroad Crossing	Turnout/Parking
Boat Ramp	Fee Station	Political Boundary	Problem Area	

ROUTE: 302 Spring Unit Road #1 TOTAL LENGTH: 0.57 Miles

ASSET: 10034301

RTE DESCRIPTION: From Auto Tour Route (Rte 010) to South Spring Road (Rte 101)

Section Number	001			
Section Length (miles)	0.57			
Inspection Date	4/22/2008			
Section Information				
Surface Type	Gravel			
Number of Lanes	1			
Roadway Width (feet)	12			
Roadway Condition Information				
Condition	Fair			
Remaining Service Life (years)	4			
Cost Estimate	\$2000			
CRV	\$389600			



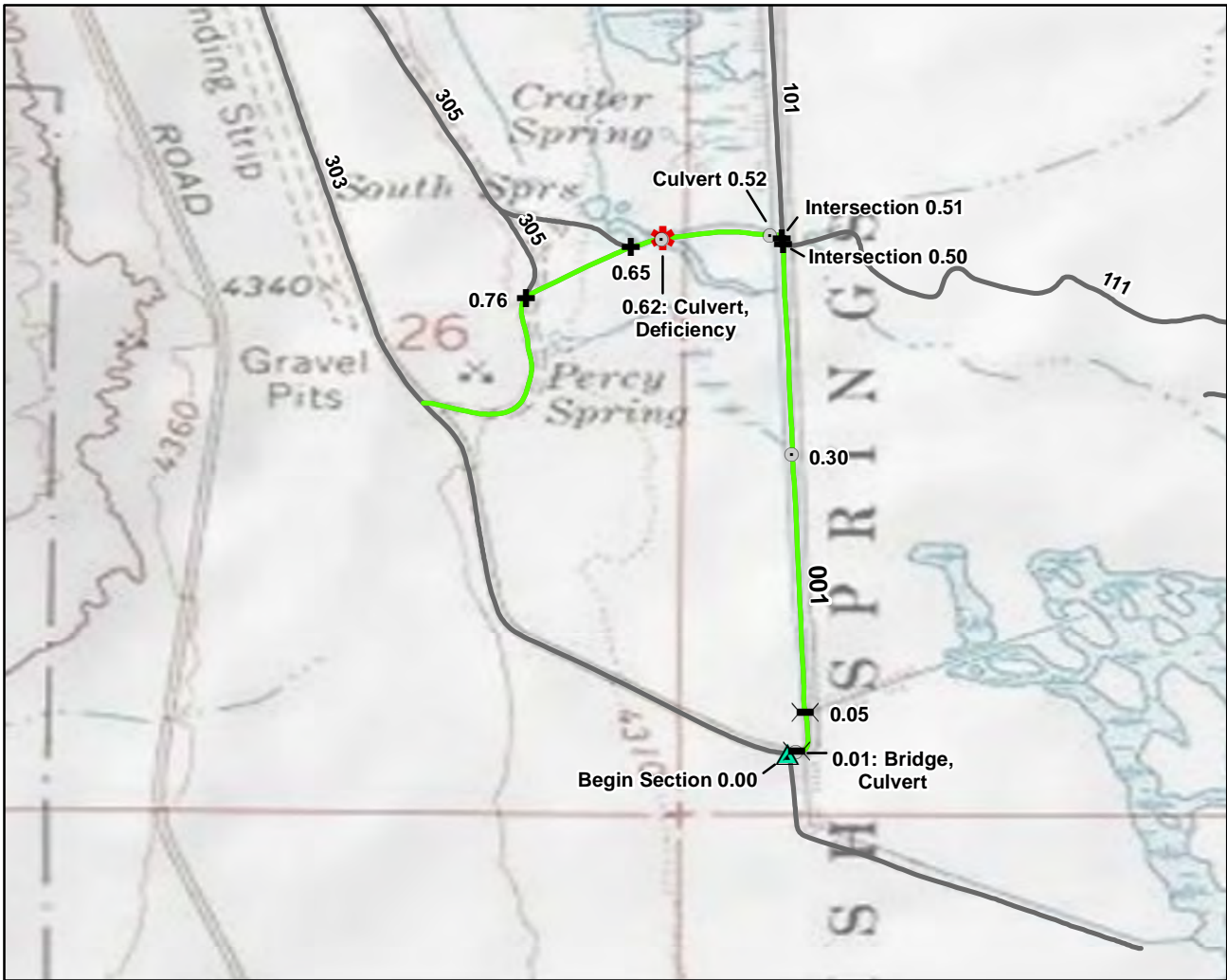
Excellent	Good	Fair	Poor	Failed
Bridge	Gate	Culvert	Deficiency	Visitor Center
Begin Section	Low Water Crossing	Intersection	Railroad Crossing	Turnout/Parking
Boat Ramp	Fee Station	Political Boundary	Problem Area	

ROUTE: 303 Spring Unit Road #2 TOTAL LENGTH: 1.71 Miles

ASSET: 10034301

RTE DESCRIPTION: From Auto Tour Route (Rte 010) to end of route

	001	002	003
Section Number	001	002	003
Section Length (miles)	1.00	0.58	0.13
Inspection Date	4/22/2008	4/22/2008	4/22/2008
Section Information			
Surface Type	Gravel	Gravel	Primitive
Number of Lanes	1	1	1
Roadway Width (feet)	12	12	10
Roadway Condition Information			
Condition	Fair	Fair	Fair
Remaining Service Life (years)	4	4	4
Cost Estimate	\$3600	\$2100	\$100
CRV	\$689400	\$399500	\$0



	Excellent		Good		Fair		Poor		Failed		
	Bridge		Gate		Culvert		Deficiency		Railroad Crossing		Visitor Center
	Begin Section		Low Water Crossing		Intersection		Political Boundary		Turnout/Parking		Problem Area
	Boat Ramp		Fee Station								

ROUTE: 304 Spring Unit Road #3 TOTAL LENGTH: 0.97 Miles

ASSET: 10034301

RTE DESCRIPTION: From Spring Unit Road (Rte 304) to Spring Unit Road (Rte 304)

Section Number	001				
Section Length (miles)	0.97				
Inspection Date	4/22/2008				
Section Information					
Surface Type	Gravel				
Number of Lanes	1				
Roadway Width (feet)	12				
Roadway Condition Information					
Condition	Good				
Remaining Service Life (years)	7				
Cost Estimate	\$1600				
CRV	\$665200				



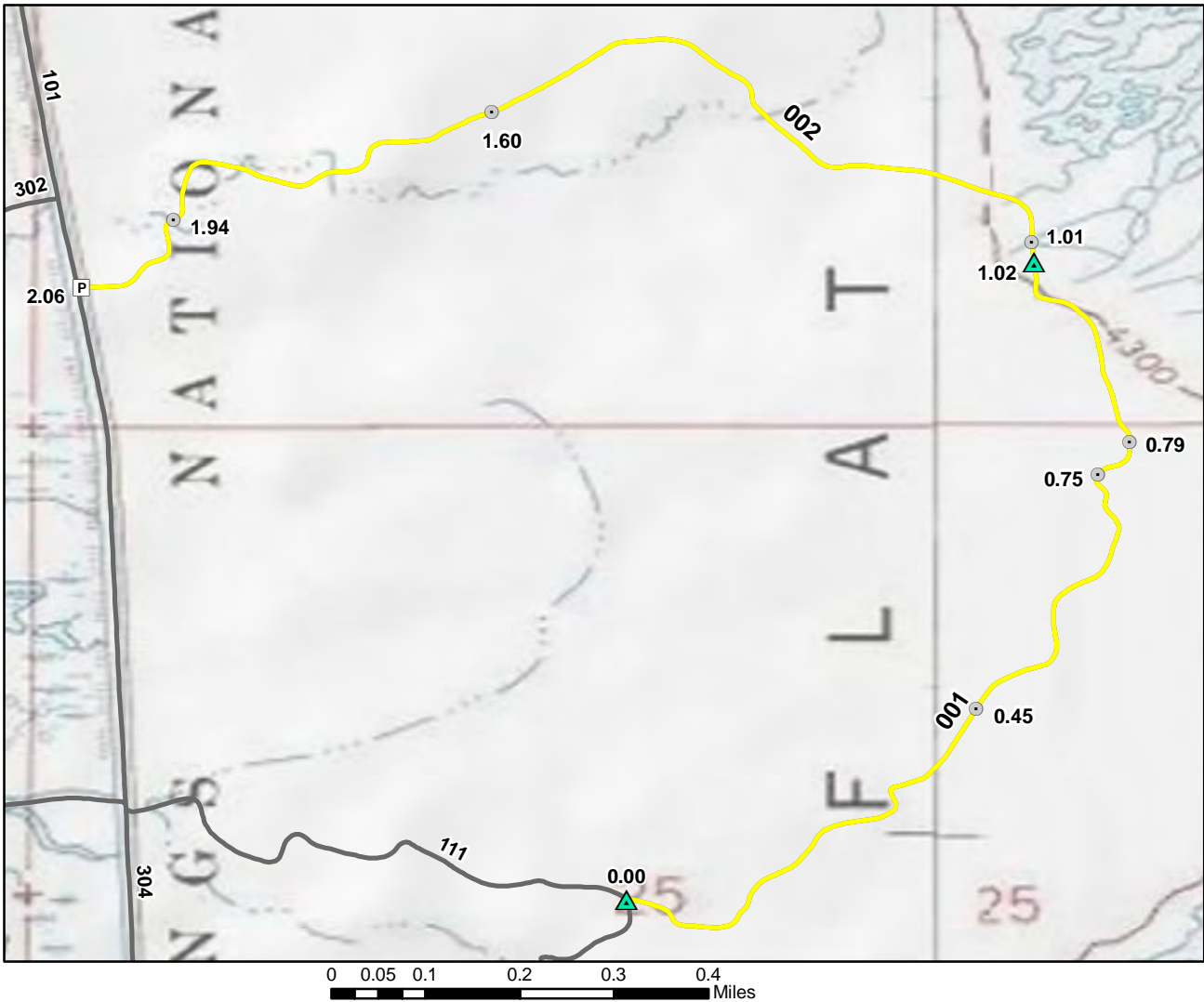
Excellent	Good	Fair	Poor	Failed
Bridge	Gate	Culvert	Deficiency	Visitor Center
Begin Section	Low Water Crossing	Intersection	Railroad Crossing	Turnout/Parking
Boat Ramp	Fee Station	Political Boundary	Problem Area	

ROUTE: 305 Spring Unit Road #4 TOTAL LENGTH: 0.69 Miles

ASSET: 10034301

RTE DESCRIPTION: From Spring Unit Road (Rte 304) to Spring Unit Road (Rte 305)

Section Number	001	002		
Section Length (miles)	0.60	0.10		
Inspection Date	4/22/2008	4/22/2008		
Section Information				
Surface Type	Gravel	Gravel		
Number of Lanes	1	1		
Roadway Width (feet)	10	10		
Roadway Condition Information				
Condition	Excellent	Excellent		
Remaining Service Life (years)	9	9		
Cost Estimate	\$0	\$0		
CRV	\$411000	\$66500		

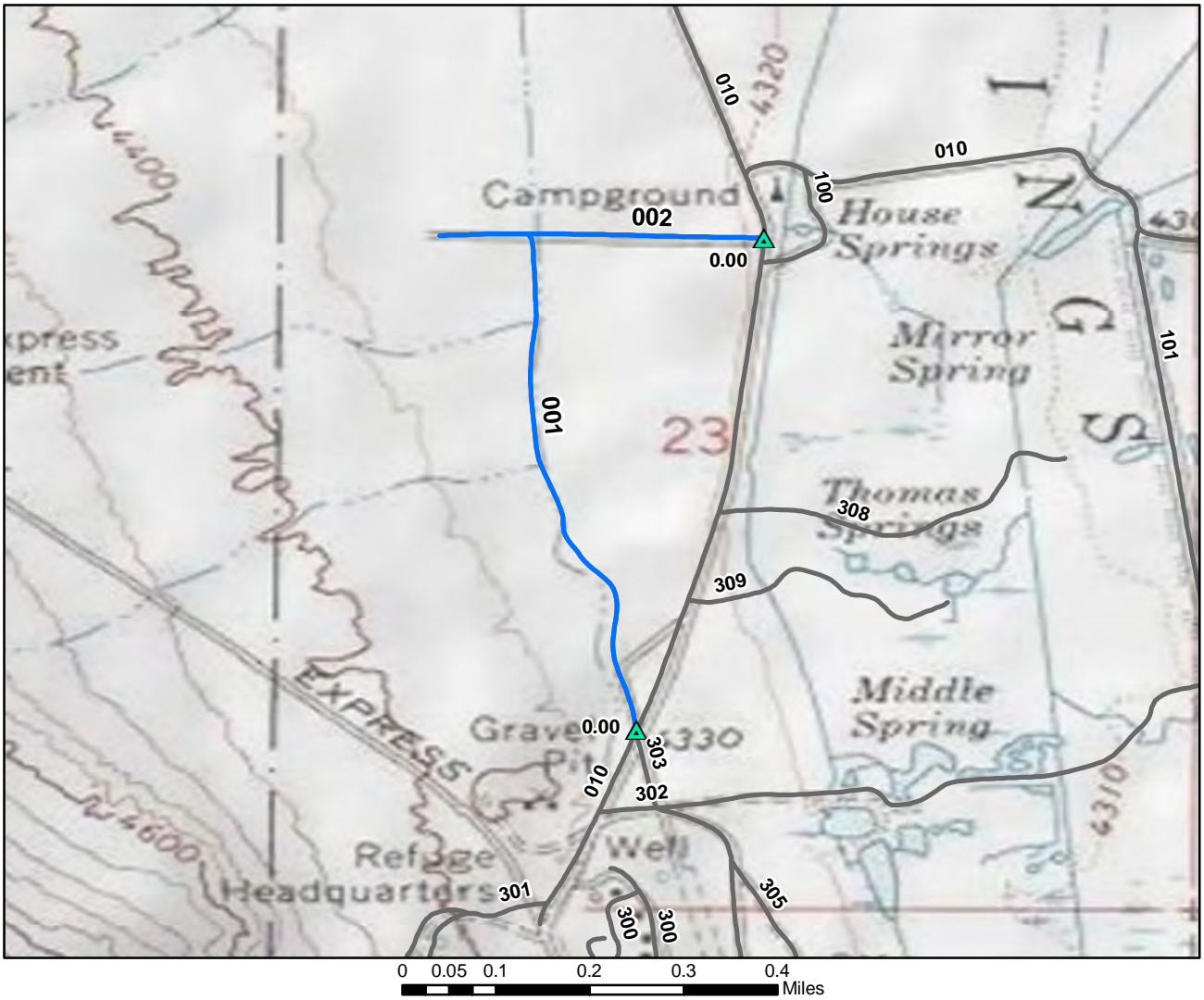


Excellent	Good	Fair	Poor	Failed
Bridge	Gate	Culvert	Deficiency	Visitor Center
Begin Section	Low Water Crossing	Intersection	Railroad Crossing	Turnout/Parking
Boat Ramp	Fee Station	Political Boundary	Problem Area	

ROUTE: 306 Handicapped Blind Administrative Road TOTAL LENGTH: 2.07 Miles
 ASSET: 10034342

RTE DESCRIPTION: From Special Hunting Blind Area Road (Rte 111) to South Spring Road Parking #1 (Rte 904)

Section Number	001	002		
Section Length (miles)	1.00	1.06		
Inspection Date	4/22/2008	4/22/2008		
Section Information				
Surface Type	Native	Native		
Number of Lanes	1	1		
Roadway Width (feet)	10	10		
Roadway Condition Information				
Condition	Fair	Fair		
Remaining Service Life (years)	4	4		
Cost Estimate	\$2200	\$2300		
CRV	\$357600	\$377800		



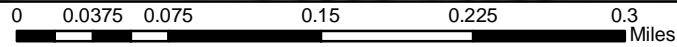
Excellent	Good	Fair	Poor	Failed
Bridge	Gate	Culvert	Deficiency	Visitor Center
Begin Section	Low Water Crossing	Intersection	Railroad Crossing	Turnout/Parking
Boat Ramp	Fee Station	Political Boundary	Problem Area	

ROUTE: 307 Boneyard Access Road TOTAL LENGTH: 0.81 Miles

ASSET: 10034343

RTE DESCRIPTION: From Auto Tour Route (Rte 010) to Auto Tour Route (Rte 010)

Section Number	001	002		
Section Length (miles)	0.55	0.27		
Inspection Date	4/22/2008	4/22/2008		
Section Information				
Surface Type	Native	Gravel		
Number of Lanes	1	1		
Roadway Width (feet)	10	10		
Roadway Condition Information				
Condition	Excellent	Excellent		
Remaining Service Life (years)	9	10		
Cost Estimate	\$0	\$0		
CRV	\$195000	\$182700		



Excellent	Good	Fair	Poor	Failed
Bridge	Gate	Culvert	Deficiency	Visitor Center
Begin Section	Low Water Crossing	Intersection	Railroad Crossing	Turnout/Parking
Boat Ramp	Fee Station	Political Boundary	Problem Area	

ROUTE: 308 Spring Unit Road #5 TOTAL LENGTH: 0.33 Miles

ASSET: 10034301

RTE DESCRIPTION: From Auto Tour Route (Rte 010) to end of route

Section Number	001			
Section Length (miles)	0.33			
Inspection Date	4/22/2008			
Section Information				
Surface Type	Native			
Number of Lanes	1			
Roadway Width (feet)	8			
Roadway Condition Information				
Condition	Good			
Remaining Service Life (years)	7			
Cost Estimate	\$600			
CRV	\$118600			



Excellent	Good	Fair	Poor	Failed
Bridge	Gate	Culvert	Deficiency	Visitor Center
Begin Section	Low Water Crossing	Intersection	Railroad Crossing	Turnout/Parking
Boat Ramp	Fee Station	Political Boundary	Problem Area	

ROUTE: 309 Spring Unit Road #6 TOTAL LENGTH: 0.25 Miles

ASSET: 10034301

RTE DESCRIPTION: From Auto Tour Route (Rte 010) to end of route

Section Number	001			
Section Length (miles)	0.25			
Inspection Date	4/22/2008			
Section Information				
Surface Type	Gravel			
Number of Lanes	1			
Roadway Width (feet)	8			
Roadway Condition Information				
Condition	Good			
Remaining Service Life (years)	7			
Cost Estimate	\$400			
CRV	\$170200			



Excellent	Good	Fair	Poor	Failed
Bridge	Gate	Culvert	Deficiency	Visitor Center
Begin Section	Low Water Crossing	Intersection	Railroad Crossing	Turnout/Parking
Boat Ramp	Fee Station	Political Boundary	Problem Area	

ROUTE: 310 Water Control Structure Route #1 TOTAL LENGTH: 0.58 Miles
 ASSET: 10046011

RTE DESCRIPTION: From Harrison Pool Loop (Rte 106) to end of route

Section Number	001				
Section Length (miles)	0.58				
Inspection Date	4/22/2008				
Section Information					
Surface Type	Native				
Number of Lanes	1				
Roadway Width (feet)	10				
Roadway Condition Information					
Condition	Good				
Remaining Service Life (years)	7				
Cost Estimate	\$1000				
CRV	\$206000				



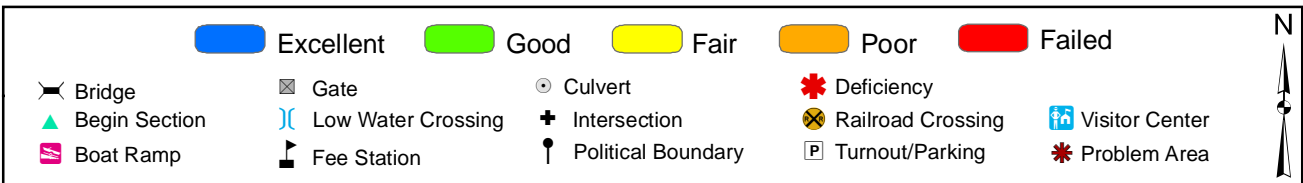
Excellent	Good	Fair	Poor	Failed
Bridge	Gate	Culvert	Deficiency	Visitor Center
Begin Section	Low Water Crossing	Intersection	Railroad Crossing	Turnout/Parking
Boat Ramp	Fee Station	Political Boundary	Problem Area	

ROUTE: 311 Water Control Structure Route #2 TOTAL LENGTH: 0.22 Miles

ASSET: 10046011

RTE DESCRIPTION: From Harrison Pool Loop (Rte 106) to end of route

Section Number	001				
Section Length (miles)	0.22				
Inspection Date	4/22/2008				
Section Information					
Surface Type	Native				
Number of Lanes	1				
Roadway Width (feet)	10				
Roadway Condition Information					
Condition	Good				
Remaining Service Life (years)	7				
Cost Estimate	\$400				
CRV	\$77200				

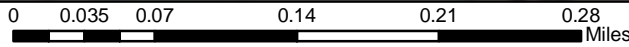


ROUTE: 312 Ibis Administrative Road TOTAL LENGTH: 1.16 Miles

ASSET: 10034308

RTE DESCRIPTION: From Harrison Pool Loop (Rte 106) to Gadwall Dike Road (Rte 315)

Section Number	001			
Section Length (miles)	1.16			
Inspection Date	4/22/2008			
Section Information				
Surface Type	Gravel			
Number of Lanes	1			
Roadway Width (feet)	10			
Roadway Condition Information				
Condition	Excellent			
Remaining Service Life (years)	9			
Cost Estimate	\$0			
CRV	\$795700			



Excellent	Good	Fair	Poor	Failed
Bridge	Gate	Culvert	Deficiency	Visitor Center
Begin Section	Low Water Crossing	Intersection	Railroad Crossing	Turnout/Parking
Boat Ramp	Fee Station	Political Boundary	Problem Area	

ROUTE: 313 G7 Access Road TOTAL LENGTH: 0.23 Miles

ASSET: 10046011

RTE DESCRIPTION: From Ibis Administrative Road (Rte 313) to end of route

Section Number	001				
Section Length (miles)	0.23				
Inspection Date	4/22/2008				
Section Information					
Surface Type	Native				
Number of Lanes	1				
Roadway Width (feet)	10				
Roadway Condition Information					
Condition	Good				
Remaining Service Life (years)	7				
Cost Estimate	\$400				
CRV	\$80100				



Excellent	Good	Fair	Poor	Failed
Bridge	Gate	Culvert	Deficiency	Visitor Center
Begin Section	Low Water Crossing	Intersection	Railroad Crossing	Turnout/Parking
Boat Ramp	Fee Station	Political Boundary	Problem Area	

ROUTE: 314 Gadwall Dike Road TOTAL LENGTH: 3.17 Miles

ASSET: 10034307

RTE DESCRIPTION: From Ibis Administrative Road (Rte 313) to Harrison Pool Loop (Rte 106)

Section Number	001	002	003		
Section Length (miles)	1.01	0.99	1.16		
Inspection Date	4/22/2008	4/22/2008	4/22/2008		
Section Information					
Surface Type	Gravel	Gravel	Gravel		
Number of Lanes	1	1	1		
Roadway Width (feet)	12	12	12		
Roadway Condition Information					
Condition	Excellent	Excellent	Excellent		
Remaining Service Life (years)	8	8	8		
Cost Estimate	\$0	\$0	\$0		
CRV	\$694500	\$682100	\$801000		



Excellent	Good	Fair	Poor	Failed
Bridge	Gate	Culvert	Deficiency	Visitor Center
Begin Section	Low Water Crossing	Intersection	Railroad Crossing	Turnout/Parking
Boat Ramp	Fee Station	Political Boundary	Problem Area	

ROUTE: 315 Water Control Structure Road #1 TOTAL LENGTH: 0.07 Miles

ASSET: 10046011

RTE DESCRIPTION: From Gadwall Dike Road (Rte 315) to end of route

Section Number	001				
Section Length (miles)	0.07				
Inspection Date	4/22/2008				
Section Information					
Surface Type	Native				
Number of Lanes	1				
Roadway Width (feet)	10				
Roadway Condition Information					
Condition	Excellent				
Remaining Service Life (years)	8				
Cost Estimate	\$0				
CRV	\$24900				



	Excellent		Good		Fair		Poor		Failed						
	Bridge		Gate		Culvert		Deficiency		Railroad Crossing		Visitor Center		Turnout/Parking		Problem Area
	Begin Section		Low Water Crossing		Intersection		Political Boundary								
	Boat Ramp		Fee Station												

ROUTE: 316 Water Control Structure Road #2 TOTAL LENGTH: 0.08 Miles
 ASSET: 10046011

RTE DESCRIPTION: From Water Control Sturcture Road #1 (Rte 316) to end of route

Section Number	001				
Section Length (miles)	0.08				
Inspection Date	4/22/2008				
Section Information					
Surface Type	Primitive				
Number of Lanes	1				
Roadway Width (feet)	10				
Roadway Condition Information					
Condition	Good				
Remaining Service Life (years)	7				
Cost Estimate	\$0				
CRV	\$0				



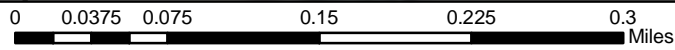
Excellent	Good	Fair	Poor	Failed	N ↑ ↓
Bridge	Gate	Culvert	Deficiency	Visitor Center	
Begin Section	Low Water Crossing	Intersection	Railroad Crossing	Turnout/Parking	
Boat Ramp	Fee Station	Political Boundary	Problem Area		

ROUTE: 317 Water Control Structure Road #3 TOTAL LENGTH: 0.19 Miles

ASSET: 10046011

RTE DESCRIPTION: From Harrison Pool Loop (Rte 106) to end of route

Section Number	001				
Section Length (miles)	0.19				
Inspection Date	4/22/2008				
Section Information					
Surface Type	Primitive				
Number of Lanes	1				
Roadway Width (feet)	10				
Roadway Condition Information					
Condition	Good				
Remaining Service Life (years)	7				
Cost Estimate	\$100				
CRV	\$0				

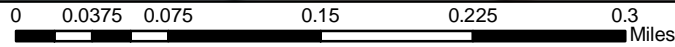
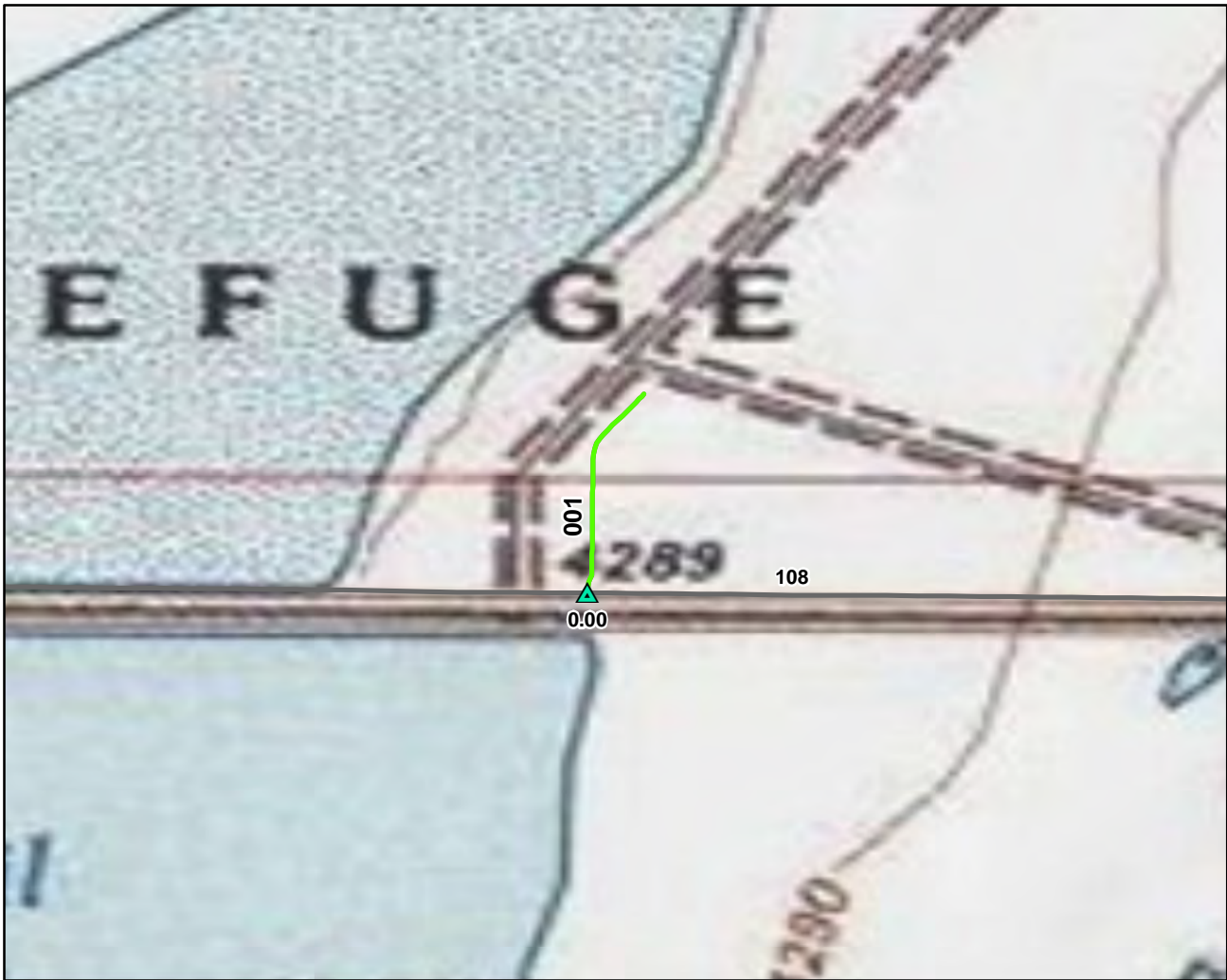


Excellent	Good	Fair	Poor	Failed
Bridge	Gate	Culvert	Deficiency	Visitor Center
Begin Section	Low Water Crossing	Intersection	Railroad Crossing	Turnout/Parking
Boat Ramp	Fee Station	Political Boundary	Problem Area	

ROUTE: 318 Water Control Structure Road #4 TOTAL LENGTH: 0.17 Miles
 ASSET: 10046011

RTE DESCRIPTION: From Water Control Structure Road #3 (Rte 318) to end of route

Section Number	001				
Section Length (miles)	0.17				
Inspection Date	4/22/2008				
Section Information					
Surface Type	Primitive				
Number of Lanes	1				
Roadway Width (feet)	8				
Roadway Condition Information					
Condition	Good				
Remaining Service Life (years)	7				
Cost Estimate	\$100				
CRV	\$0				



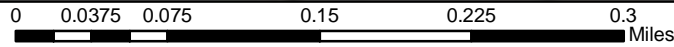
Excellent	Good	Fair	Poor	Failed
Bridge	Gate	Culvert	Deficiency	Visitor Center
Begin Section	Low Water Crossing	Intersection	Railroad Crossing	Turnout/Parking
Boat Ramp	Fee Station	Political Boundary	Problem Area	

ROUTE: 319 Water Control Structure Road #5 TOTAL LENGTH: 0.11 Miles

ASSET: 10046011

RTE DESCRIPTION: From Pintail Pool Cutoff Road (Rte 108) to end of route

Section Number	001				
Section Length (miles)	0.11				
Inspection Date	4/22/2008				
Section Information					
Surface Type	Primitive				
Number of Lanes	1				
Roadway Width (feet)	8				
Roadway Condition Information					
Condition	Good				
Remaining Service Life (years)	7				
Cost Estimate	\$0				
CRV	\$0				

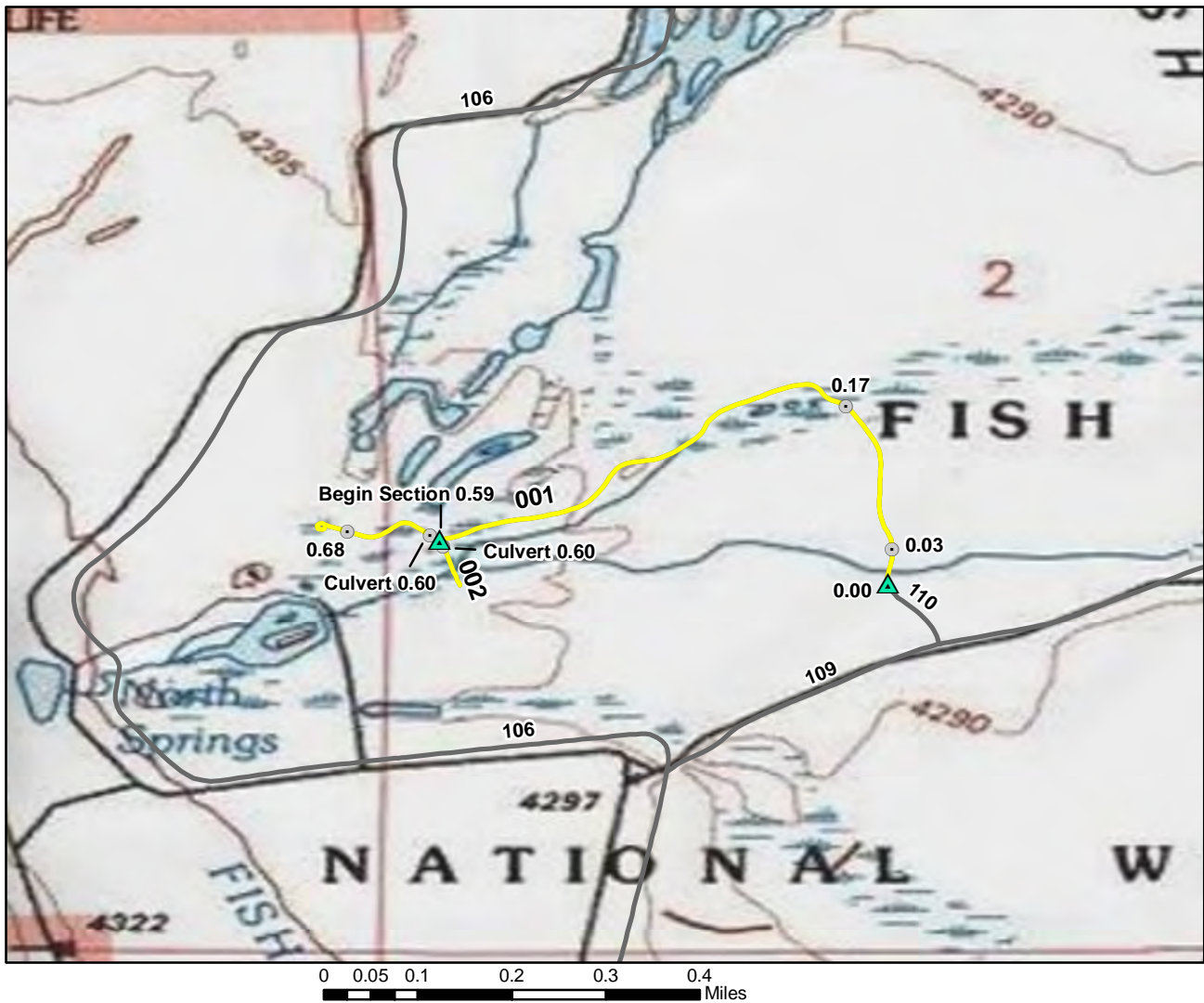


Excellent	Good	Fair	Poor	Failed
Bridge	Gate	Culvert	Deficiency	Visitor Center
Begin Section	Low Water Crossing	Intersection	Railroad Crossing	Turnout/Parking
Boat Ramp	Fee Station	Political Boundary	Problem Area	

ROUTE: 320 Harrison Interior Administrative Road TOTAL LENGTH: 0.52 Miles
 ASSET: 10034342

RTE DESCRIPTION: From Harrison Interior Road (Rte 109) to end of route

Section Number	001				
Section Length (miles)	0.52				
Inspection Date	4/22/2008				
Section Information					
Surface Type	Primitive				
Number of Lanes	1				
Roadway Width (feet)	10				
Roadway Condition Information					
Condition	Fair				
Remaining Service Life (years)	4				
Cost Estimate	\$400				
CRV	\$0				

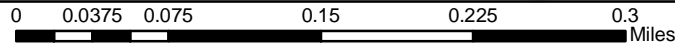


Excellent	Good	Fair	Poor	Failed
Bridge	Gate	Culvert	Deficiency	Visitor Center
Begin Section	Low Water Crossing	Intersection	Railroad Crossing	Turnout/Parking
Boat Ramp	Fee Station	Political Boundary	Problem Area	

ROUTE: 321 Harrison Pool Administrative Spur TOTAL LENGTH: 0.77 Miles
 ASSET: 10034342

RTE DESCRIPTION: From Harrison Interior East Parking (Rte 908) to end of route

Section Number	001	002		
Section Length (miles)	0.72	0.05		
Inspection Date	4/22/2008	4/22/2008		
Section Information				
Surface Type	Gravel	Gravel		
Number of Lanes	1	1		
Roadway Width (feet)	10	10		
Roadway Condition Information				
Condition	Fair	Fair		
Remaining Service Life (years)	4	4		
Cost Estimate	\$2600	\$200		
CRV	\$493800	\$35300		



Excellent	Good	Fair	Poor	Failed
Bridge	Gate	Culvert	Deficiency	Visitor Center
Begin Section	Low Water Crossing	Intersection	Railroad Crossing	Turnout/Parking
Boat Ramp	Fee Station	Political Boundary	Problem Area	

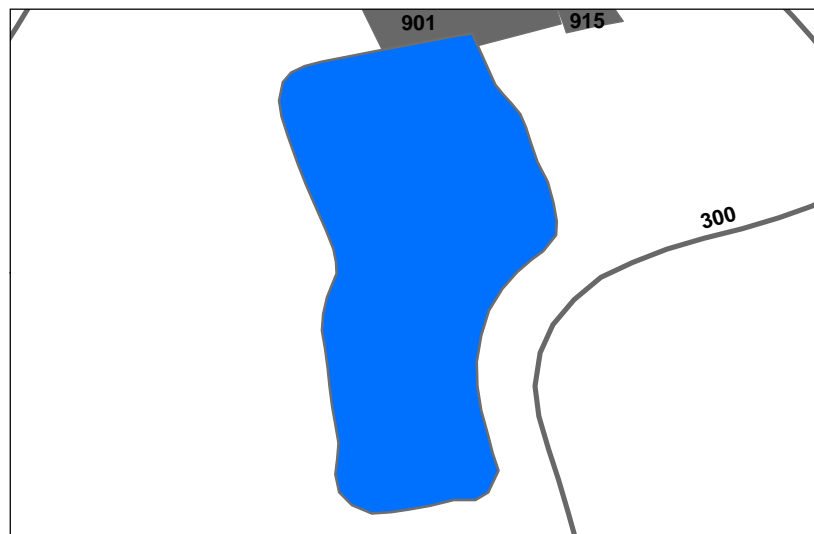
ROUTE: 322 Avocet Pool Administrative Road TOTAL LENGTH: 0.26 Miles
 ASSET: 10034344

RTE DESCRIPTION: From end of Avocet Pool Road (Rte 102) to end of route

Section Number	001				
Section Length (miles)	0.26				
Inspection Date	4/23/2008				
Section Information					
Surface Type	Gravel				
Number of Lanes	1				
Roadway Width (feet)	10				
Roadway Condition Information					
Condition	Excellent				
Remaining Service Life (years)	9				
Cost Estimate	\$0				
CRV	\$177700				

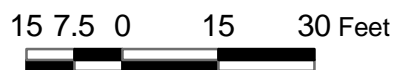
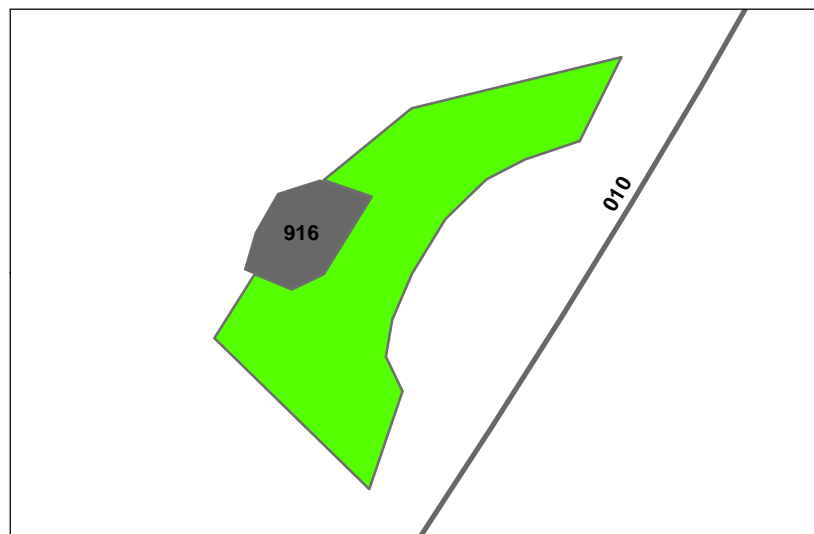
Route 800: Administrative Parking

Asset Number	Date Visited	Surface Type	Area (sq ft)	Condition	Cost to Improve
10050852	4/22/2008	Gravel	16213	Excellent	\$0



Route 900: Visitor Registration Parking

Asset Number	Date Visited	Surface Type	Area (sq ft)	Condition	Cost to Improve
10050852	4/21/2008	Gravel	1246	Good	\$200



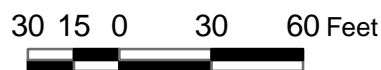
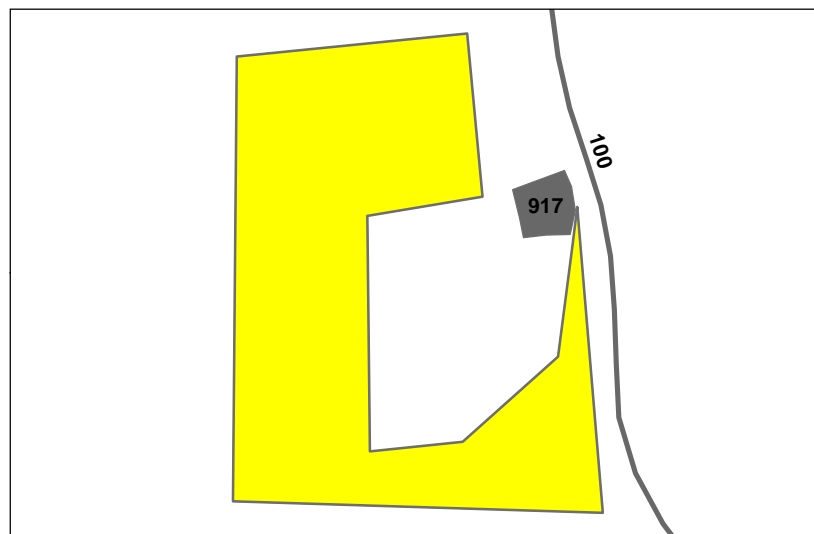
Route 901: Headquarters Parking

Asset Number	Date Visited	Surface Type	Area (sq ft)	Condition	Cost to Improve
10050852	4/21/2008	Gravel	9334	Good	\$1400



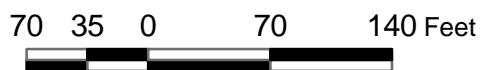
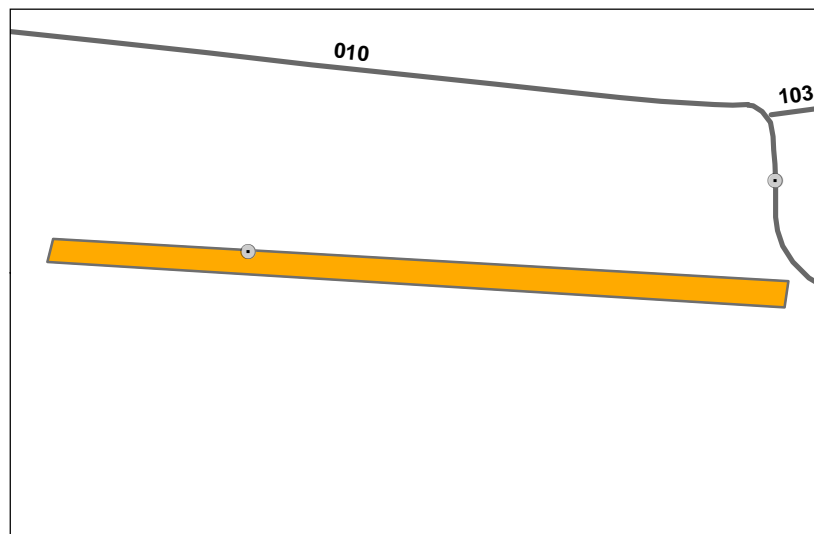
Route 902: Watchable Wildlife Area Parking

Asset Number	Date Visited	Surface Type	Area (sq ft)	Condition	Cost to Improve
10050853	4/21/2008	Gravel	8877	Fair	\$2300



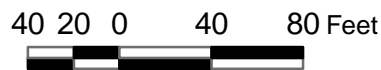
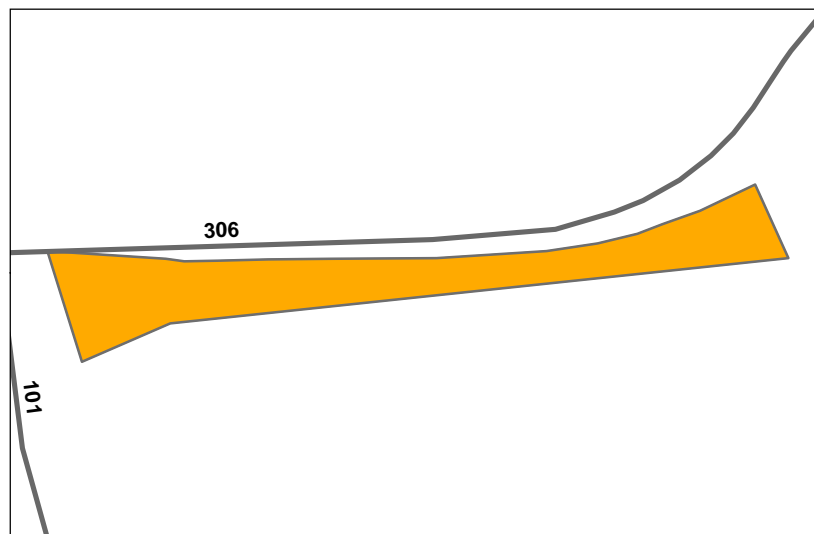
Route 903: Auto Tour Route Parking

Asset Number	Date Visited	Surface Type	Area (sq ft)	Condition	Cost to Improve
10050855	4/21/2008	Gravel	4811	Poor	\$5300



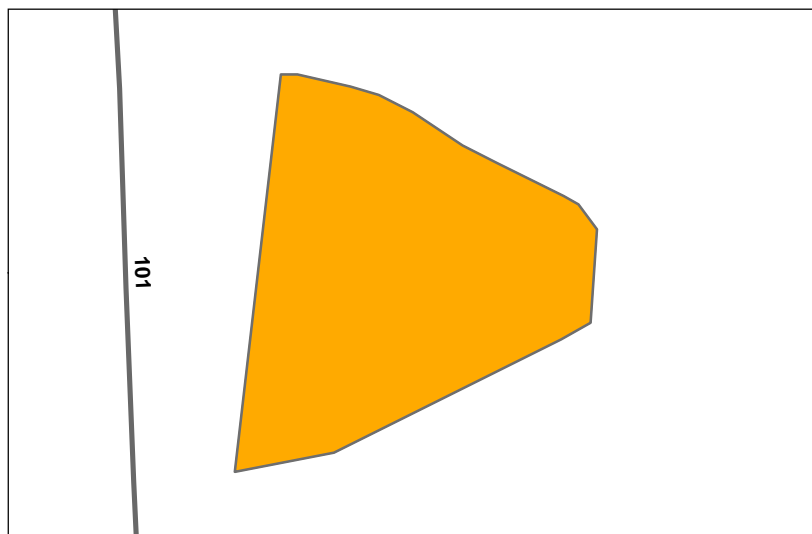
Route 904: South Spring Road Parking #1

Asset Number	Date Visited	Surface Type	Area (sq ft)	Condition	Cost to Improve
10050857	4/21/2008	Native	5749	Poor	\$4700



Route 905: South Spring Road Parking #2

Asset Number	Date Visited	Surface Type	Area (sq ft)	Condition	Cost to Improve
10050858	4/21/2008	Gravel	3479	Poor	\$3800

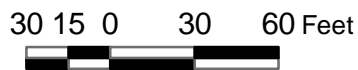
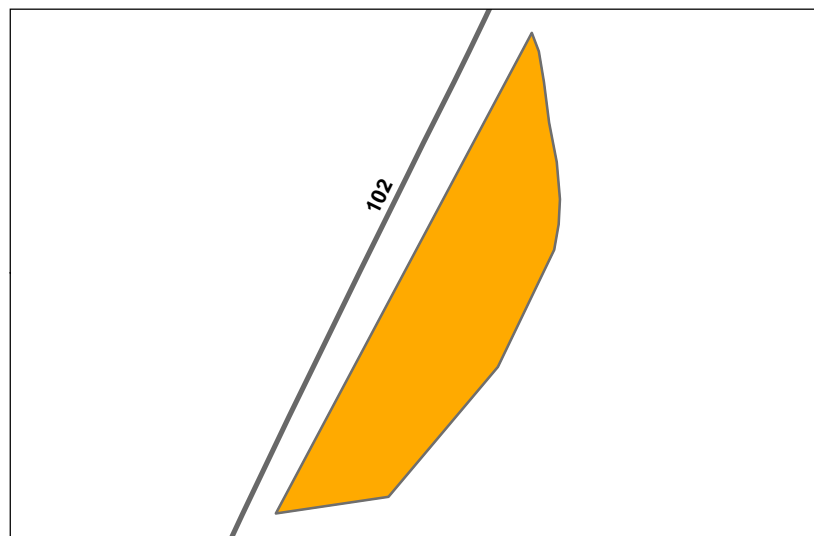


105 0 10 20 Feet



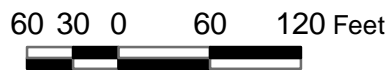
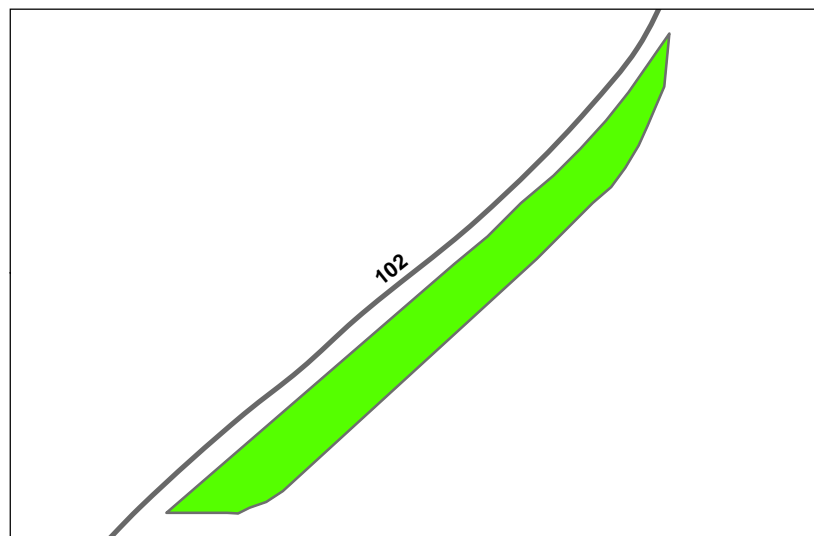
Route 906: Avocet Pool Parking #1

Asset Number	Date Visited	Surface Type	Area (sq ft)	Condition	Cost to Improve
10050860	4/23/2008	Gravel	5126	Poor	\$5600



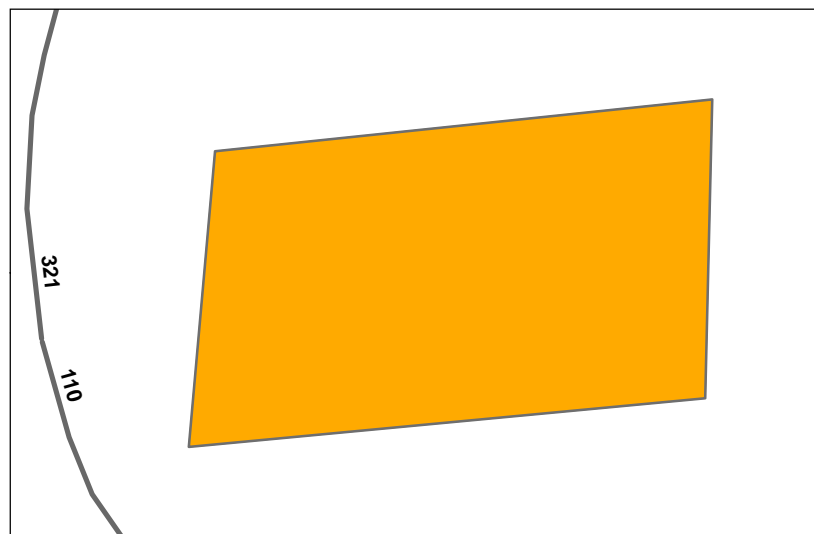
Route 907: Avocet Pool Parking #2

Asset Number	Date Visited	Surface Type	Area (sq ft)	Condition	Cost to Improve
10050861	4/23/2008	Gravel	11245	Good	\$1700



Route 908: Harrison Interior East Parking

Asset Number	Date Visited	Surface Type	Area (sq ft)	Condition	Cost to Improve
10050862	4/22/2008	Native	3605	Poor	\$2900

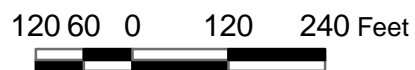
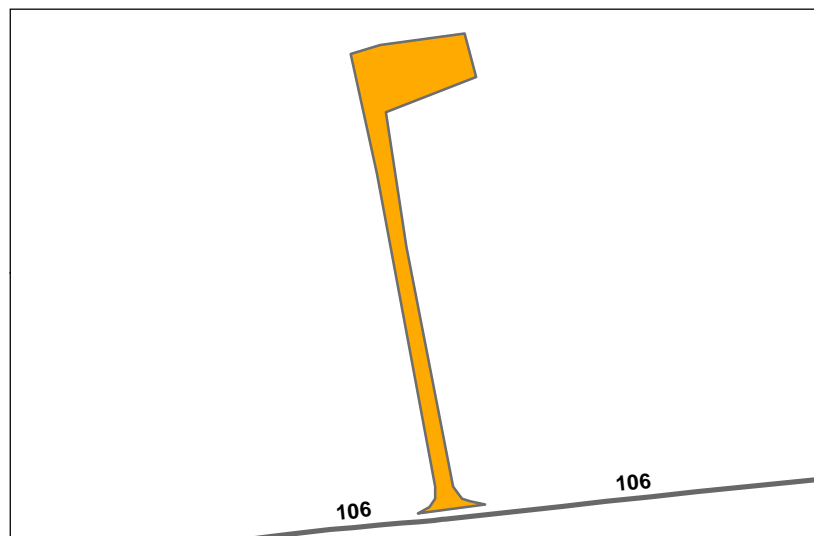


105 0 10 20 Feet



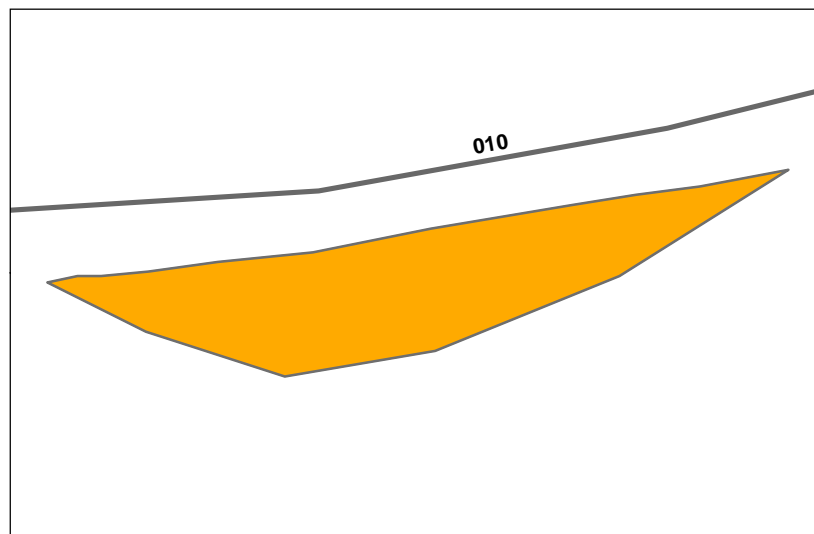
Route 909: Harrison Interior West Parking

Asset Number	Date Visited	Surface Type	Area (sq ft)	Condition	Cost to Improve
10050863	4/23/2008	Gravel	17230	Poor	\$19000



Route 910: Mallard West Parking

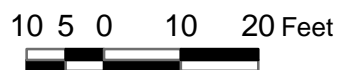
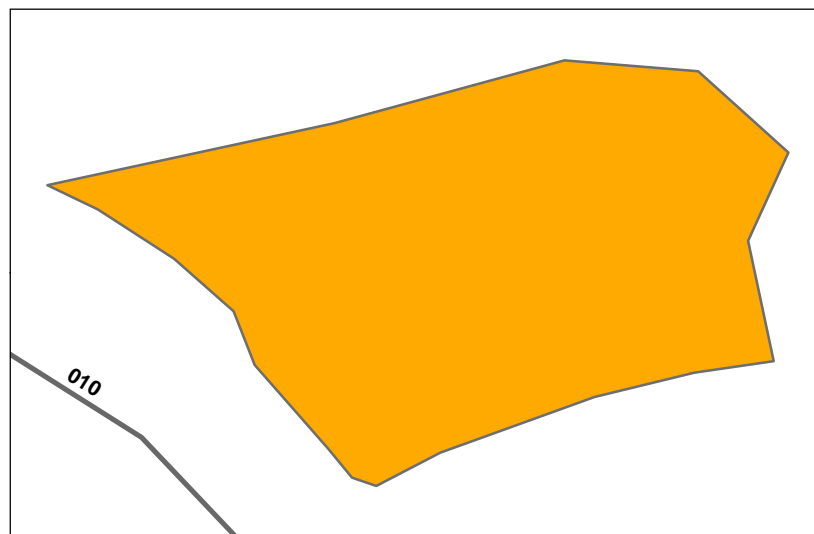
Asset Number	Date Visited	Surface Type	Area (sq ft)	Condition	Cost to Improve
10050872	4/21/2008	Gravel	1128	Poor	\$1200



10 5 0 10 20 Feet

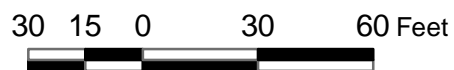
Route 911: Mallard Parking

Asset Number	Date Visited	Surface Type	Area (sq ft)	Condition	Cost to Improve
10050872	4/21/2008	Native	2454	Poor	\$2000



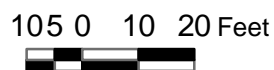
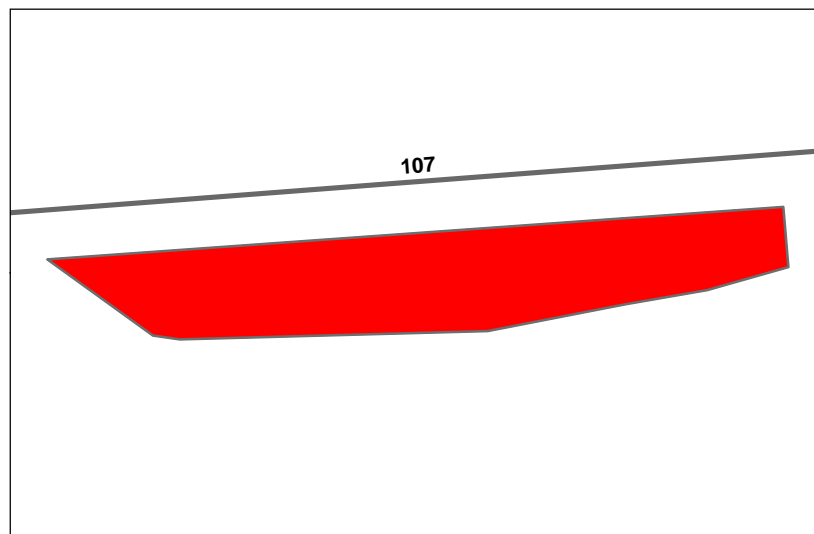
Route 913: Curlew Northwest Parking

Asset Number	Date Visited	Surface Type	Area (sq ft)	Condition	Cost to Improve
10050873	4/21/2008	Gravel	2604	Poor	\$2900



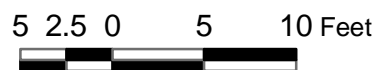
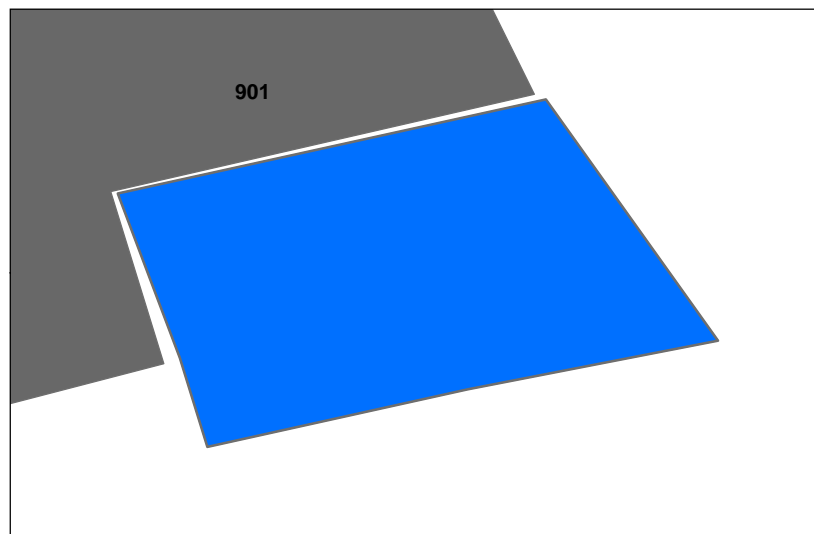
Route 914: Shoveler Pool Parking

Asset Number	Date Visited	Surface Type	Area (sq ft)	Condition	Cost to Improve
10050873	4/22/2008	Gravel	1575	Failed	\$5300



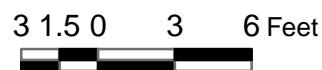
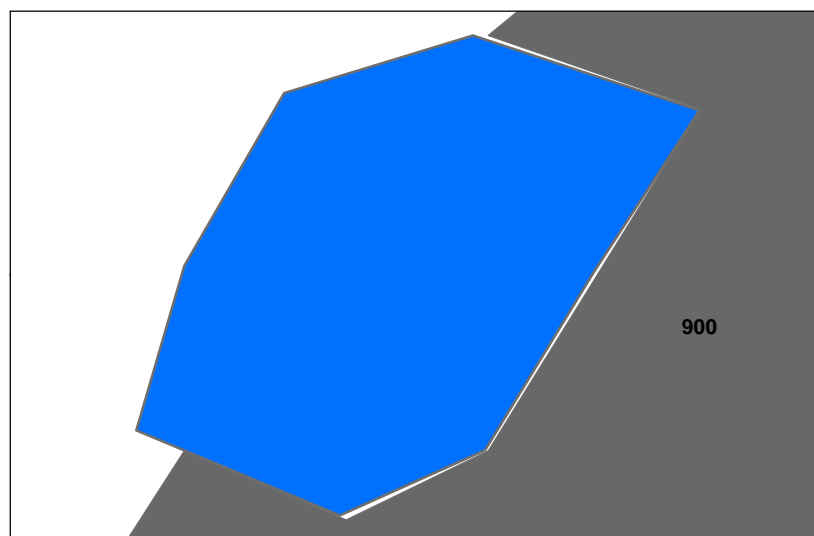
Route 915: Headquarters Handicapped Parking

Asset Number	Date Visited	Surface Type	Area (sq ft)	Condition	Cost to Improve
10050852	4/21/2008	Concrete	301	Excellent	\$0



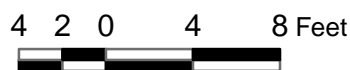
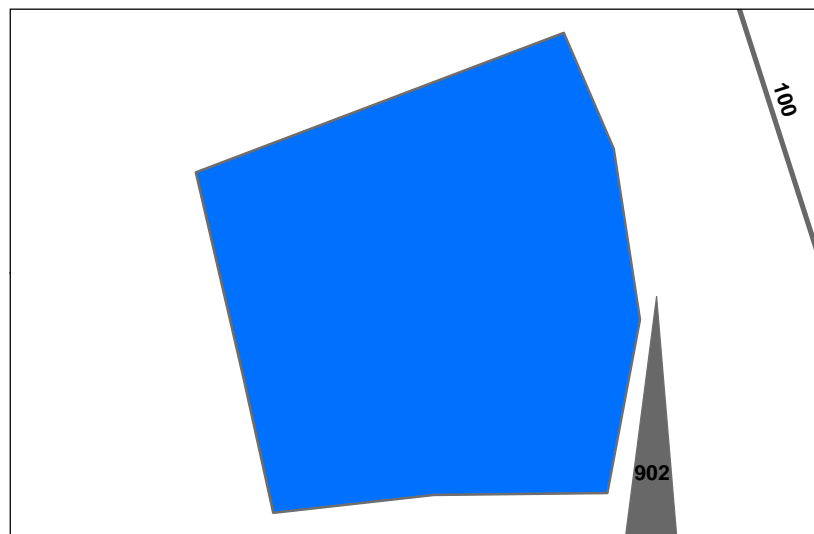
Route 916: Vistor Registration Handicapped Parking

Asset Number	Date Visited	Surface Type	Area (sq ft)	Condition	Cost to Improve
10050852	4/21/2008	Concrete	200	Excellent	\$0



Route 917: Watchable Wildlife Area Handicapped Parking

Asset Number	Date Visited	Surface Type	Area (sq ft)	Condition	Cost to Improve
10050853	4/21/2008	Concrete	267	Excellent	\$0



Fish Springs NWR Bridge Inventory					
Rte #	Milepost	NBIS #	Sufficiency Rating	Functionally Obsolete	Structurally Deficient
100	0.12	N/A	N/A	N/A	N/A
101	0.01	N/A	N/A	N/A	N/A
104	0.01	N/A	N/A	N/A	N/A
104	0.03	N/A	N/A	N/A	N/A
105	2.88	N/A	N/A	N/A	N/A
105	2.12	N/A	N/A	N/A	N/A
105	1.59	N/A	N/A	N/A	N/A
106	1.01	N/A	N/A	N/A	N/A
106	2.21	N/A	N/A	N/A	N/A
106	4.20	N/A	N/A	N/A	N/A
107	0.32	N/A	N/A	N/A	N/A
304	0.01	N/A	N/A	N/A	N/A
304	0.05	N/A	N/A	N/A	N/A

FEATURES PHOTOGRAPHS

ROUTE NUMBER: 010 ROUTE NAME: Auto Tour Route



Photo # 3719 - MP 0.00 - Begin Route at Begin Section

ROUTE NUMBER: 010 ROUTE NAME: Auto Tour Route



Photo # 3722 - MP 0.81 - Begin Section 002

ROUTE NUMBER: 010 ROUTE NAME: Auto Tour Route



Photo # 3731 - MP 1.72 - Begin Section 003

FEATURES PHOTOGRAPHS

ROUTE NUMBER: 010 ROUTE NAME: Auto Tour Route



Photo # 3734 - MP 1.99 - Begin Section 004

ROUTE NUMBER: 010 ROUTE NAME: Auto Tour Route



Photo # 3748 - MP 3.37 - Begin Section 005

ROUTE NUMBER: 010 ROUTE NAME: Auto Tour Route

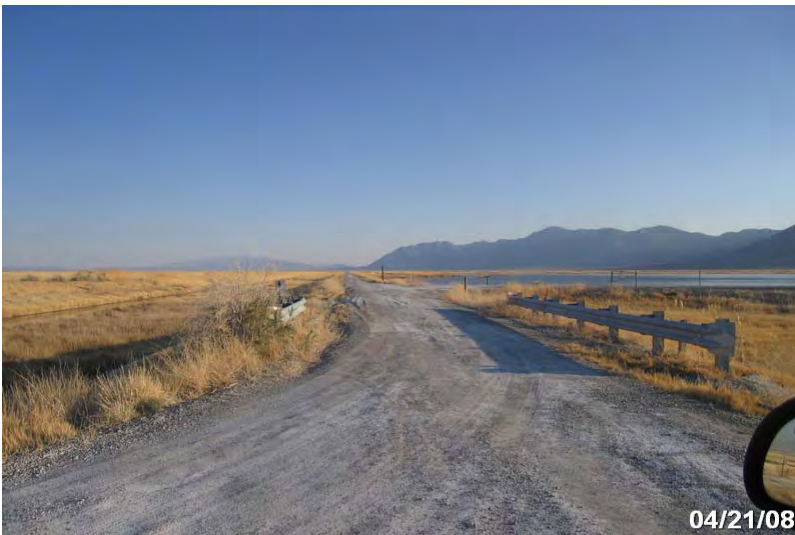


Photo # 3764 - MP 5.78 - Begin Section 008

FEATURES PHOTOGRAPHS

ROUTE NUMBER: 010 ROUTE NAME: Auto Tour Route



Photo # 3771 - MP 6.83 - Begin Section 009

ROUTE NUMBER: 010 ROUTE NAME: Auto Tour Route



Photo # 3779 - MP 8.66 - Begin Section 011

ROUTE NUMBER: 100 ROUTE NAME: Watchable Wildlife Area Access Road



Photo # 3845 - MP 0.00 - Begin Route at Begin Section

FEATURES PHOTOGRAPHS

ROUTE NUMBER: 100 ROUTE NAME: Watchable Wildlife Area Access Road



Photo # 3847 - MP 0.12 - Bridge

ROUTE NUMBER: 101 ROUTE NAME: South Spring Road



Photo # 3844 - MP 0.00 - Begin Route at Begin Section

ROUTE NUMBER: 101 ROUTE NAME: South Spring Road



Photo # 3843 - MP 0.01 - Bridge

FEATURES PHOTOGRAPHS

ROUTE NUMBER: 102 ROUTE NAME: Avocet Pool Road



Photo # 4006 - MP 0.00 - Begin Route at Begin Section

ROUTE NUMBER: 103 ROUTE NAME: Mallard Pool Road



Photo # 3981 - MP 0.00 - Begin Route at Begin Section

ROUTE NUMBER: 104 ROUTE NAME: Curlew Pool Cutoff Road



Photo # 3985 - MP 0.00 - Begin Route at Begin Section

FEATURES PHOTOGRAPHS

ROUTE NUMBER: 104 ROUTE NAME: Curlew Pool Cutoff Road



Photo # 3985 - MP 0.01 - Bridge

ROUTE NUMBER: 104 ROUTE NAME: Curlew Pool Cutoff Road



Photo # 3988 - MP 0.03 - Bridge

ROUTE NUMBER: 105 ROUTE NAME: Egret Pool Road



Photo # 3874 - MP 0.00 - Begin Route at Begin Section

FEATURES PHOTOGRAPHS

ROUTE NUMBER: 105 ROUTE NAME: Egret Pool Road



Photo # 3873 - MP 1.02 - Begin Section 002

ROUTE NUMBER: 105 ROUTE NAME: Egret Pool Road



Photo # 3870 - MP 1.59 - Bridge

ROUTE NUMBER: 105 ROUTE NAME: Egret Pool Road

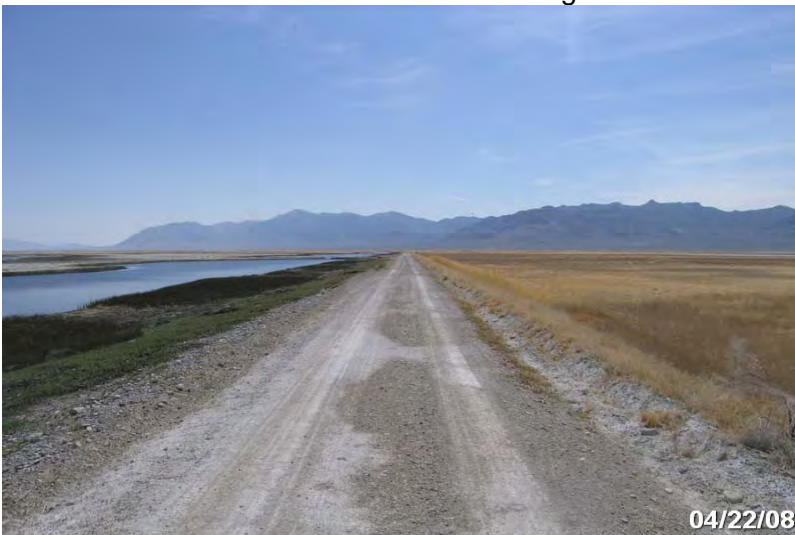


Photo # 3869 - MP 1.99 - Begin Section 003

FEATURES PHOTOGRAPHS

ROUTE NUMBER: 105 ROUTE NAME: Egret Pool Road



Photo # 3866 - MP 2.12 - Bridge

ROUTE NUMBER: 105 ROUTE NAME: Egret Pool Road



Photo # 3863 - MP 2.88 - Bridge

ROUTE NUMBER: 106 ROUTE NAME: Harrison Pool Loop



Photo # 3946 - MP 0.00 - Begin Route at Begin Section

FEATURES PHOTOGRAPHS

ROUTE NUMBER: 106 ROUTE NAME: Harrison Pool Loop



Photo # 3953 - MP 1.00 - Begin Section 002

ROUTE NUMBER: 106 ROUTE NAME: Harrison Pool Loop



Photo # 3956 - MP 1.01 - Bridge

ROUTE NUMBER: 106 ROUTE NAME: Harrison Pool Loop



Photo # 3959 - MP 2.01 - Begin Section 003

FEATURES PHOTOGRAPHS

ROUTE NUMBER: 106 ROUTE NAME: Harrison Pool Loop



Photo # 3960 - MP 2.21 - Bridge

ROUTE NUMBER: 106 ROUTE NAME: Harrison Pool Loop



Photo # 3963 - MP 2.59 - Begin Section 004

ROUTE NUMBER: 106 ROUTE NAME: Harrison Pool Loop



Photo # 3967 - MP 3.59 - Begin Section 005

FEATURES PHOTOGRAPHS

ROUTE NUMBER: 106 ROUTE NAME: Harrison Pool Loop



Photo # 3968 - MP 4.20 - Bridge

ROUTE NUMBER: 106 ROUTE NAME: Harrison Pool Loop



Photo # 3972 - MP 4.29 - Begin Section 006

ROUTE NUMBER: 106 ROUTE NAME: Harrison Pool Loop



Photo # 3977 - MP 6.08 - Begin Section 007

FEATURES PHOTOGRAPHS

ROUTE NUMBER: 106 ROUTE NAME: Harrison Pool Loop



Photo # 3978 - MP 6.32 - Begin Section 008

ROUTE NUMBER: 106 ROUTE NAME: Harrison Pool Loop



Photo # 3979 - MP 7.33 - Begin Section 009

ROUTE NUMBER: 107 ROUTE NAME: Shoveler Pool Cutoff Road



Photo # 3858 - MP 0.00 - Begin Route at Begin Section

FEATURES PHOTOGRAPHS

ROUTE NUMBER: 107 ROUTE NAME: Shoveler Pool Cutoff Road



Photo # 3860 - MP 0.32 - Bridge

ROUTE NUMBER: 107 ROUTE NAME: Shoveler Pool Cutoff Road



Photo # 3857 - MP 1.00 - Begin Section 002

ROUTE NUMBER: 108 ROUTE NAME: Pintail Pool Cutoff Road



Photo # 3919 - MP 0.00 - Begin Route at Begin Section

FEATURES PHOTOGRAPHS

ROUTE NUMBER: 108 ROUTE NAME: Pintail Pool Cutoff Road



Photo # 3923 - MP 1.00 - Begin Section 002

ROUTE NUMBER: 109 ROUTE NAME: Harrison Interior Road



Photo # 3924 - MP 0.00 - Begin Route at Begin Section

ROUTE NUMBER: 110 ROUTE NAME: Harrison Pool Parking Spur



Photo # 3930 - MP 0.00 - Begin Route at Begin Section

FEATURES PHOTOGRAPHS

ROUTE NUMBER: 111 ROUTE NAME: Special Hunting Blind Area Road



Photo # 3812 - MP 0.00 - Begin Route at Begin Section

ROUTE NUMBER: 300 ROUTE NAME: Administrative Residential Road



Photo # 3782 - MP 0.00 - Begin Route at Begin Section

ROUTE NUMBER: 300 ROUTE NAME: Administrative Residential Road



Photo # 3783 - MP 0.04 - Begin Section 002

FEATURES PHOTOGRAPHS

ROUTE NUMBER: 300 ROUTE NAME: Administrative Residential Road



Photo # 3784 - MP 0.14 - Begin Section 003

ROUTE NUMBER: 301 ROUTE NAME: Cistern Road



Photo # 3785 - MP 0.00 - Begin Route at Begin Section

ROUTE NUMBER: 302 ROUTE NAME: Spring Unit Road #1

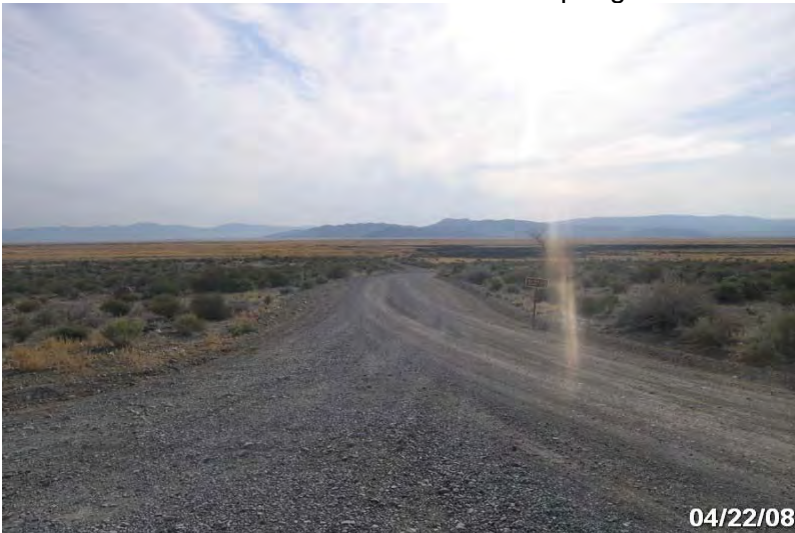


Photo # 3786 - MP 0.57 - Begin Route at Begin Section

FEATURES PHOTOGRAPHS

ROUTE NUMBER: 303 ROUTE NAME: Spring Unit Road #2



Photo # 3791 - MP 0.00 - Begin Route at Begin Section

ROUTE NUMBER: 303 ROUTE NAME: Spring Unit Road #2



Photo # 3792 - MP 1.00 - Begin Section 002

ROUTE NUMBER: 303 ROUTE NAME: Spring Unit Road #2



Photo # 3793 - MP 1.58 - Begin Section 003

FEATURES PHOTOGRAPHS

ROUTE NUMBER: 304 ROUTE NAME: Spring Unit Road #3



Photo # 3796 - MP 0.00 - Begin Route at Begin Section

ROUTE NUMBER: 304 ROUTE NAME: Spring Unit Road #3



Photo # 3796 - MP 0.01 - Bridge

ROUTE NUMBER: 304 ROUTE NAME: Spring Unit Road #3



Photo # 3799 - MP 0.05 - Bridge

FEATURES PHOTOGRAPHS

ROUTE NUMBER: 304 ROUTE NAME: Spring Unit Road #3



Photo # 3806 - MP 0.62 - Culvert Deficiency

ROUTE NUMBER: 304 ROUTE NAME: Spring Unit Road #3



Photo # 3807 - MP 0.62 - Culvert Deficiency

ROUTE NUMBER: 305 ROUTE NAME: Spring Unit Road #4



Photo # 3810 - MP 0.00 - Begin Route at Begin Section

FEATURES PHOTOGRAPHS

ROUTE NUMBER: 305 ROUTE NAME: Spring Unit Road #4



04/22/08

Photo # 3811 - MP 0.47 - Begin Section 002

ROUTE NUMBER: 306 ROUTE NAME: Handicapped Blind Administrative Road



04/22/08

Photo # 3817 - MP 0.00 - Begin Route at Begin Section

ROUTE NUMBER: 306 ROUTE NAME: Handicapped Blind Administrative Road



04/22/08

Photo # 3826 - MP 1.01 - Begin Section 002

FEATURES PHOTOGRAPHS

ROUTE NUMBER: 307 ROUTE NAME: Boneyard Access Road



Photo # 3849 - MP 0.00 - Begin Route at Begin Section

ROUTE NUMBER: 307 ROUTE NAME: Boneyard Access Road



Photo # 3850 - MP 0.55 - Begin Section 002

ROUTE NUMBER: 308 ROUTE NAME: Spring Unit Road #5



Photo # 3851 - MP 0.00 - Begin Route at Begin Section

FEATURES PHOTOGRAPHS

ROUTE NUMBER: 309 ROUTE NAME: Spring Unit Road #6



Photo # 3852 - MP 0.00 - Begin Route at Begin Section

ROUTE NUMBER: 309 ROUTE NAME: Spring Unit Road #6



Photo # 3853 - MP 0.07 - Culvert Deficiency

ROUTE NUMBER: 309 ROUTE NAME: Spring Unit Road #6



Photo # 3854 - MP 0.07 - Culvert Deficiency

FEATURES PHOTOGRAPHS

ROUTE NUMBER: 310 ROUTE NAME: Water Control Structure Route #1



Photo # 3875 - MP 0.00 - Begin Route at Begin Section

ROUTE NUMBER: 311 ROUTE NAME: Water Control Structure Route #2



Photo # 3880 - MP 0.00 - Begin Route at Begin Section

ROUTE NUMBER: 312 ROUTE NAME: Ibis Administrative Road



Photo # 3883 - MP 0.00 - Begin Route at Begin Section

FEATURES PHOTOGRAPHS

ROUTE NUMBER: 313 ROUTE NAME: G7 Access Road



Photo # 3890 - MP 0.00 - Begin Route at Begin Section

ROUTE NUMBER: 314 ROUTE NAME: Gadwall Dike Road



Photo # 3893 - MP 0.00 - Begin Route at Begin Section

ROUTE NUMBER: 314 ROUTE NAME: Gadwall Dike Road



Photo # 3894 - MP 1.01 - Begin Section 002

FEATURES PHOTOGRAPHS

ROUTE NUMBER: 314 ROUTE NAME: Gadwall Dike Road



Photo # 3897 - MP 2.00 - Begin Section 003

ROUTE NUMBER: 315 ROUTE NAME: Water Control Structure Road #1



Photo # 3901 - MP 0.00 - Begin Route at Begin Section

ROUTE NUMBER: 316 ROUTE NAME: Water Control Structure Road #2



Photo # 3904 - MP 0.00 - Begin Route at Begin Section

FEATURES PHOTOGRAPHS

ROUTE NUMBER: 317 ROUTE NAME: Water Control Structure Road #3



Photo # 3909 - MP 0.00 - Begin Route at Begin Section

ROUTE NUMBER: 318 ROUTE NAME: Water Control Structure Road #4



Photo # 3914 - MP 0.00 - Begin Route at Begin Section

ROUTE NUMBER: 319 ROUTE NAME: Water Control Structure Road #5



Photo # 3922 - MP 0.00 - Begin Route at Begin Section

FEATURES PHOTOGRAPHS

ROUTE NUMBER: 320 ROUTE NAME: Harrison Interior Administrative Road



Photo # 3929 - MP 0.00 - Begin Route at Begin Section

ROUTE NUMBER: 321 ROUTE NAME: Harrison Pool Administrative Spur



Photo # 3933 - MP 0.00 - Begin Route at Begin Section

ROUTE NUMBER: 321 ROUTE NAME: Harrison Pool Administrative Spur



Photo # 3942 - MP 0.59 - Begin Section 002

FEATURES PHOTOGRAPHS

ROUTE NUMBER: 322 ROUTE NAME: Avocet Pool Administrative Road



Photo # 4013 - MP 0.00 - Begin Route at Begin Section

Accident Summary

Number of Accidents Reported	Timespan of Accidents	Injuries	Fatalities
0	No Accidents Reported	0	0

APPENDIX

FWS ROAD FUNCTIONAL CLASSIFICATION	
Class I	Principal Refuge Road (Public Roads) - Routes that constitute the main access route, main auto tour route, or thoroughfare for refuge visitors. These routes are accessible by 2WD vehicles. Routes are numbered from 10 to 99.
Class II	Connector Refuge Road (Public Roads) - Routes that provide circulation within the refuge. These routes can also provide access to areas of scenic, scientific, recreational or cultural interest, such as overlooks, campgrounds, education centers, etc. These routes are accessible by 2WD vehicles. Routes are numbered from 100 to 199.
Class III	Special Purpose Refuge Road (Public Roads) - Roads that provide circulation within special use areas such as campgrounds or public concessionaire facilities or access to remote areas of the refuge. These routes may not be 2WD accessible. Routes are numbered from 200 to 299
Class IV	Administrative Access Road (Administrative Roads) - Routes intended for access to administrative developments or structures such as maintenance offices, employee quarters, or utility areas. These routes are accessible by 2WD vehicles. These routes may restrict access to the general public. Routes are numbered from 300 to 399.
Class V	Restricted Road (Administrative Roads) - Routes normally closed to the public, such as maintenance roads, service roads, patrol roads, and fire breaks. These routes may be open to the public for a short period of time for a special use, such as hunting access. These routes may not be 2WD accessible. Routes are numbered from 400 to 499.

A refuge road system contains those routes within or giving access to a refuge or other unit of the FWS that are administered by the FWS, or by the Service in cooperation with other agencies. The assignment of a functional classification (FC) to a refuge road is not based on traffic volumes or design speed, but on the intended use or function of that route.

DESCRIPTION OF RATING SYSTEM

Rating Data is collected on four different surface types: Asphalt, Concrete, Gravel, and Native. The Utah LTAP Center's Remaining Service Life (RSL) system is used for all surface types. The RSL system is based on the Strategic Highway Research Program's (SHRP) Distress Identification Manual.

Asphalt Rating System

Data is collected on the following distresses and conditions:

- **Fatigue Cracking** - Interconnected cracks forming small irregular shapes.
- **Longitudinal Cracking** - Cracks running parallel with the roadway, in the direction of traffic.
- **Transverse Cracking** - Cracks perpendicular to the roadway, going across the lane or lanes.
- **Block Cracking** - Interconnected cracks forming large blocks.
- **Edge Cracking** - Cracks running along the edge of the pavement surface.
- **Patches** - Original surface repaired with new asphalt patch material.
- **Potholes** - Holes or depressions in the pavement.
- **Rutting** - surface depressions in the wheel paths.
- **Roughness** - Evenness of pavement for serviceability.
- **Drainage** - Ability of the road surface to drain water based on proper slope.

A Condition Rating value is calculated for each homogenous pavement section, and can be up to 1 mile in length.

Rating Index Formula

Fatigue, longitudinal, transverse, block, and edge cracking, along with patching and potholes are rated on a 0 - 9 scale (0 = no distress, 9 = maximum distress). The rating given is based on the extent and the severity of the distress. Rutting, roughness, and drainage are rated on a 0 - 3 scale (0 = excellent, 3 = poor). Each distress type has given Remaining Service Life (RSL) values (in years) based on the rating for that particular distress. The distress with the rating resulting in the lowest RSL value is considered to be the governing distress. That value is then assigned as the RSL of the road segment.

Concrete Rating System

Data is collected on the following distresses and conditions:

- **Spalling of Joints** - Chipping, breaking, or cracking of slab edges
- **Joint Seal Damage** - Any damage or condition that enables materials or water to infiltrate into the joint from the surface.
- **Corner Breaks** - A portion of the slab separated by a crack that intersects the adjacent transverse and longitudinal joints, forming approximately a 45° angle to the direction.
- **Broken Slabs** - Faulting and/or cracking localized to individual slabs.
- **Faulting** - Difference in elevation across a crack or joint.
- **Longitudinal Cracking** - Cracks in the pavement running parallel to road.

- **Transverse Cracking** - Cracks in the pavement running perpendicular to the direction of traffic.
- **Patch Deterioration** – Faulting, settling, or cracking of previously placed patch
- **Map Cracking** – A series of cracks that extend only into the upper surface of the Slab

A Condition Rating value is calculated for each homogenous pavement section, and can be up to 1 mile in length.

Rating Index Formula

The rating procedure for concrete pavement is the same as that for asphalt pavement described previously. Each of the distresses described above are rated on the same 0 – 9 scale. The governing distress is then determined and the RSL associated with that distress is assigned to the road segment.

Gravel and Native Rating System

Data is collected on the following distresses and conditions:

- **Cross Section (Crown)** - Roadway built so that the center is higher than the shoulder, to prevent water from pooling on roadway.
- **Roadside Drainage** - Roadside ditches and culverts to handle water flow and prevent pooling on the roadside.
- **Corrugations (Washboarding)** - Small trenches or holes developing perpendicular to the roadway.
- **Potholes** - Holes or depressions in the roadway.
- **Rutting** - Depressions running parallel with the roadway, in the wheelpaths.
- **Dust** - Amount of dust caused by traffic.
- **Loose Aggregate (Gravel Only)** - Loose gravel, typically piled up on the roadway edges or centerline.

A Condition Rating value is calculated for each homogenous pavement section, and can be up to 1 mile in length.

Rating Index Formula

The rating procedure for unpaved roads is the same as that for asphalt and concrete pavements described previously. Of the distresses described above, corrugations, potholes, rutting, and loose aggregate are rated on the same 0 – 9 scale previously mentioned. Cross section, roadside drainage, and dust are rated on the same 0 – 3 scale described for asphalt pavement. The governing distress is then determined and the RSL associated with that distress is assigned to the road segment.

Condition Descriptions by Surface Type

The following definitions are used to describe pavement condition for the various surface types. These are general guidelines for condition indications.

Asphalt

Excellent – Recently constructed or overlaid road where construction or overlay was performed correctly- No maintenance required. RSL = 19-20 years.

Good – Low extent longitudinal and transverse cracks. All cracks are 1/4" or less with little or no crack erosion. Patches are in good condition and applied correctly. Routine Maintenance recommended. RSL = 13-18 years.

Fair - Roads are in good structural condition with little or no fatigue cracking. Longitudinal, transverse, and edge cracking is at medium extent and severity. Block cracking is not extensive. Any patches are in good condition. Preventative maintenance recommended. RSL = 7-12 years.

Poor - Road beginning to show signs of structural distress. Fatigue cracking is medium to high extent and medium severity. Cracking will be severe. Surface may have severe block cracking and show. Patches are in fair to poor condition. There is moderate distortion or rutting and occasional potholes. Rehabilitation recommended. RSL = 1-6 years.

Failed - Road is severely deteriorated. Signs of structural failure appear along with severe and extensive fatigue cracking, distortion, potholes, or extensive patches in poor condition. Reconstruction recommended. RSL = 0 years.

Concrete

Excellent - New pavement. No maintenance required. RSL = 19-20 years

Good - First signs of transverse cracking, patch or repair, more extensive pop-outs, or scaling. Sealing or routine maintenance recommended. RSL = 13-18 years.

Fair – Pavement has joint or crack spalling, and/or faulting, along with cracking at corners with broken pieces. Any Patches are in fair condition and faulting is at a minimum. Preventative maintenance recommended. RSL = 7-12 years.

Poor - Joints and cracks are open 1 inch, spalled, or patched. Faulting is more severe. Rehabilitation recommended. RSL = 1-6 years.

Failed - Most slabs have failed structurally, and faulting is severe. Reconstruction recommended. RSL = 0 years.11-9

The following table shows the relationship between RSL and condition.

SUBJECTIVE CONDITION RATING FOR REMAINING SERVICE LIFE (Asphalt and Concrete Pavements)								
	FAILED	POOR		FAIR		GOOD		EXCELLENT
RSL Years	0	1-3	4-6	7-9	10-12	13-15	16-18	19-20

Gravel and Native

Note - Native surfaces do not have a gravel layer.

Excellent - Newly constructed road that has been constructed properly with proper crown, drainage and gravel layer. Little or no distress. No maintenance recommended. RSL = 8-10 years.

Good - Crown, drainage provisions, and gravel layer are in good condition. Distress limited to traffic effects such as dust, loose aggregate, and low severity corrugations (wash boarding). RSL = 5-7 years.

Fair - Adequate drainage and crown through majority of roadway. Crown repair, ditch improvement may be necessary. Road has more severe corrugations and potholes. Preventative maintenance recommended. RSL = 3-4 years.

Poor - Travel at slow speeds is necessary. Additional gravel layer needed to carry traffic. Poor crown. Ditching is inadequate and rutting is extensive and severe. Rehabilitation recommended. RSL = 1-2 years.

Failed - Travel is difficult, and road may be closed at times. Rutting and Corrugations are very severe. Total Reconstruction of road is recommended. RSL = 0 years.

The following table shows the RSL values for gravel and native roads in terms of excellent, good, fair, poor, and failed condition.

SUBJECTIVE CONDITION RATING FOR REMAINING SERVICE LIFE (Gravel and Native Surfaces)					
	FAILED	POOR	FAIR	GOOD	EXCELLENT
RSL Years	0	1-2	3-4	5-7	8-10