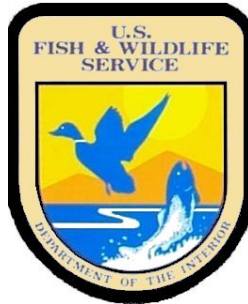


The Road Inventory of Seal Beach National Wildlife Refuge Seal Beach, CA



Prepared By:
Federal Highway Administration
Central Federal Lands Highway Division
April 2012



TABLE OF CONTENTS

<u>SECTION</u>		<u>PAGE</u>
I.	<u>INTRODUCTION</u>	1 - 1
II.	<u>SUMMARY INFORMATION</u> Summaries by Condition, Surface Type and Functional Class	2 - 1
III.	<u>REFUGE ROUTE LOCATION MAPS</u>	3 - 1
IV.	<u>ROUTE IDENTIFICATION LIST</u>	4 - 1
V.	<u>ROUTE CONDITION RATING SHEETS</u>	5 - 1
VI.	<u>PARKING LOT CONDITION RATING SHEETS</u>	6 - 1
VII.	<u>BRIDGE INVENTORY INFORMATION</u>	7 - 1
VIII.	<u>PHOTOGRAPHIC SHEETS</u>	8 - 1
IX.	<u>ACCIDENT SUMMARY</u>	9 - 1
	<u>APPENDIX</u>	
	Functional Classification Table	i
	Description of Rating System	ii

INTRODUCTION

The Transportation Equity Act for the 21st Century (Public Law 105-178) created the Refuge Roads Program. Refuge roads are those public roads that provide access to or within a unit of the National Wildlife Refuge System and for which title and maintenance responsibility is vested in the United States Government. Funds from the Highway Trust Fund are available for refuge roads and can be used by the station to pay the cost of:

- (a) Maintenance and improvements of refuge roads.
- (b) Maintenance and improvements of:
 - (1) Adjacent vehicle parking areas
 - (2) Provision for pedestrians and bicycles and
 - (3) Construction and reconstruction of roadside rest areas that are located in or adjacent to wildlife refuges
- (c) Administrative costs associated with such maintenance and improvements.

The funds available for refuge roads are to be disbursed based on the relative needs of the various refuges in the National Wildlife Refuge System, and taking into consideration:

- (a) The comprehensive conservation plan for each refuge;
- (b) The need for access as identified through land use planning; and
- (c) The impact of land use planning on existing transportation facilities.

To determine the relative needs of the U.S. Fish and Wildlife Service, the Federal Highway Administration (FHWA) was asked to inventory all public access roads and parking lots and provide a condition assessment of each. In 2008 the inventory was expanded to include administrative (service use only) roads and parking lots. An FHWA representative meets with refuge personnel to identify route segments and assign route numbers and functional classifications (See Appendix) for each route. All roads and parking lots are mapped using Trimble GPS units and visually assessed for condition using the RSL method of evaluation developed at Utah State University (See Appendix). Culverts, Gates, Guardrails and Low Water Crossings are also mapped and inspected for any obvious defects.

An estimate is provided, in year 2008 dollars, based on the condition determined by the rating system. Estimates are based upon data and location factors from the 2008 RS Means Heavy Construction Cost Data 22nd Annual Edition. Cost estimates should be evaluated on a case-by-case basis when being used for programming purposes.

Native Surfaced roads and parking lots already inventoried will not be re-inventoried and will not appear individually in report chapters 5, 6 and 8. Mileages and areas of native surfaced roads and parking lots will still appear in all summaries in the report and will remain in the road inventory database. In addition to this report, the FHWA will furnish the condition ratings of each route and segment to the Fish and Wildlife Service in a Microsoft Access database so the data can be included in their Real Property Inventory.

Seal Beach - 81683

Summaries

Route Miles and Percentages by Functional Class and Condition

Condition Rating (Based on RSL)*

F. C.	Excellent		Good		Fair		Poor		Failed		TOTAL MILES
	MILES	%	MILES	%	MILES	%	MILES	%	MILES	%	
I	0.00	0.0%	0.00	0.0%	0.00	0.0%	0.00	0.0%	0.00	0.0%	0.00
II	0.00	0.0%	0.00	0.0%	0.00	0.0%	0.00	0.0%	0.00	0.0%	0.00
III	0.00	0.0%	0.00	0.0%	0.00	0.0%	0.00	0.0%	0.00	0.0%	0.00
IV	0.00	0.0%	0.00	0.0%	0.00	0.0%	0.00	0.0%	0.00	0.0%	0.00
V	0.00	0.0%	1.20	52.0%	0.76	32.9%	0.35	15.1%	0.00	0.0%	2.31
Totals	0.00	0.0%	1.20	52.0%	0.76	32.9%	0.35	15.1%	0.00	0.0%	2.31

*For a description of condition ratings for the various surface types see the Appendix.

Route Miles and Percentages by Surface Type and Condition

Paved Condition Rating [Condition(RSL)]

Surface	Excellent		Good		Fair		Poor		Failed		TOTAL MILES
	MILES	%	MILES	%	MILES	%	MILES	%	MILES	%	
AS	0.00	0.0%	0.00	0.0%	0.00	0.0%	0.35	100.0%	0.00	0.0%	0.35
CO	0.00	0.0%	0.00	0.0%	0.00	0.0%	0.00	0.0%	0.00	0.0%	0.00
Totals	0.00	0.0%	0.00	0.0%	0.00	0.0%	0.35	100.0%	0.00	0.0%	0.35

Unpaved Condition Rating [Condition(RSL)]

Surface	Excellent		Good		Fair		Poor		Failed		TOTAL MILES
	MILES	%	MILES	%	MILES	%	MILES	%	MILES	%	
GR	0.00	0.0%	1.20	61.2%	0.76	38.8%	0.00	0.0%	0.00	0.0%	1.96
NA	0.00	0.0%	0.00	0.0%	0.00	0.0%	0.00	0.0%	0.00	0.0%	0.00
PR	0.00	0.0%	0.00	0.0%	0.00	0.0%	0.00	0.0%	0.00	0.0%	0.00
Totals	0.00	0.0%	1.20	61.2%	0.76	38.8%	0.00	0.0%	0.00	0.0%	1.96

Square Footage (Parking Areas)

Condition Rating

Surface	Excellent		Good		Fair		Poor		Failed		Total Square Feet
	Square Feet	%	Square Feet	%	Square Feet	%	Square Feet	%	Square Feet	%	
AS	0	0.0%	4,153	44.7%	5,141	55.3%	0	0.0%	0	0.0%	9,294
CO	0	0.0%	0	0.0%	0	0.0%	0	0.0%	0	0.0%	0
GR	0	0.0%	11,090	100.0%	0	0.0%	0	0.0%	0	0.0%	11,090
NA	0	0.0%	0	0.0%	0	0.0%	0	0.0%	0	0.0%	0
PR	0	0.0%	0	0.0%	0	0.0%	0	0.0%	0	0.0%	0
Totals	0	0.0%	15,243	74.8%	5,141	25.2%	0	0.0%	0	0.0%	20,384

Seal Beach - 81683

Summaries

Route Miles and Percentages by Use Type and Condition

Road Condition Rating: Public/Administrative Use

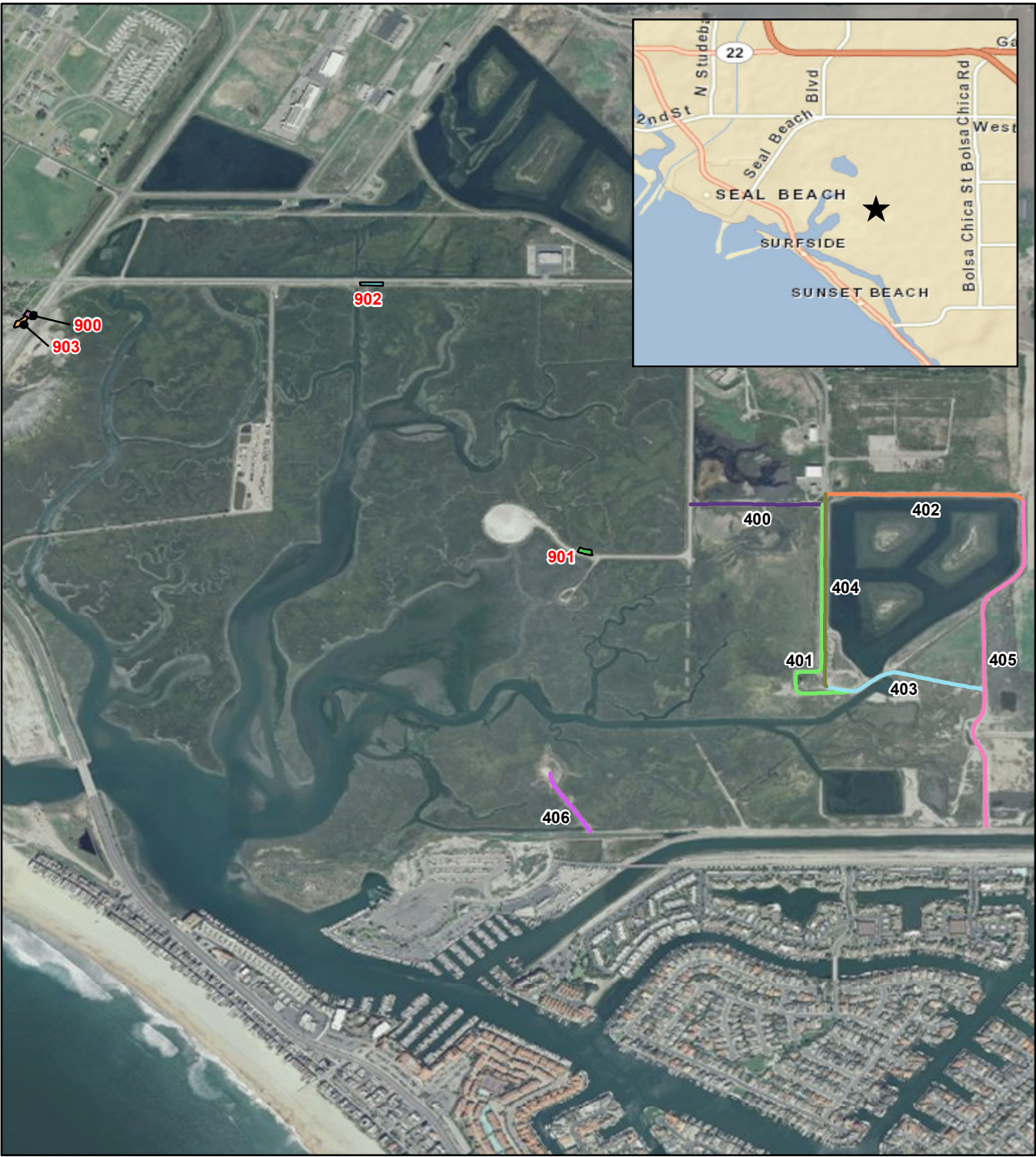
USE TYPE	Excellent		Good		Fair		Poor		Failed		TOTAL MILES
	MILES	%	MILES	%	MILES	%	MILES	%	MILES	%	
Public (FC I-III)	0.00	0.0%	0.00	0.0%	0.00	0.0%	0.00	0.0%	0.00	0.0%	0.00
Admin (FC IV-V)	0.00	0.0%	1.20	52.0%	0.76	32.9%	0.35	15.1%	0.00	0.0%	2.31
Totals	0.00	0.0%	1.20	52.0%	0.76	32.9%	0.35	15.1%	0.00	0.0%	2.31

Parking Condition Rating: Public/Administrative Use

USE TYPE	Excellent		Good		Fair		Poor		Failed		Total Sq Ft
	Sq Ft	%	Sq Ft	%	Sq Ft	%	Sq Ft	%	Sq Ft	%	
Public	0	0.0%	15243	74.8%	5141	25.2%	0	0.0%	0	0.0%	20,384
Admin	0	0.0%	0	0.0%	0	0.0%	0	0.0%	0	0.0%	0
Totals	0	0.0%	15,243	74.8%	5,141	25.2%	0	0.0%	0	0.0%	20,384

Seal Beach National Wildlife Refuge

ROUTE LOCATION MAP



Seal Beach - 81683

Route Identification List

Shading Color Key:

White = Paved Routes
Yellow = Unpaved Routes

RTE #	Asset Number	ROUTE NAME	RTE MI	ROUTE DESCRIPTION	PAVED MI	UN-PAVED MI	LANES	FC
400	10001582	Slough Road West	0.20	From Case Road to 7th Street (Route 404)	-	0.20	1	5
401	10048172	7th Street Dike Road	0.46	From Slough Road West (Route 400) to Marsh Road (Route 403)	-	0.46	1	5
402	-	Slough Road East	0.30	From Madera Road (Route 405) to 7th Street (Route 404)	-	0.30	2	5
403	-	Marsh Road	0.25	From 7th Street (Route 404) to Madera Road (Route 405)	-	0.25	1	5
404	10001587	7th Street	0.35	From Slough Road East (Route 402) to Marsh Road (Route 403)	0.35	-	2	5
405	10001585	Madera Road	0.62	From Perimeter Road to Slough Road East (Route 402)	-	0.62	2	5
406	10001588	Hog Island Spur Road	0.12	From Perimeter Road to end of route	-	0.12	1	5

Seal Beach - 81683

Route Identification List (Parking)

Shading Color Key:

White = Paved Routes
Green = Unpaved Routes

Route #	Asset Number	ROUTE NAME	Area (Sq Ft)	ROUTE DESCRIPTION	Surface Type
900	10001626	Headquarters / Visitors Center Parking	4,153	From Kitts Highway	Asphalt
901	-	NASA Island Parking Area	5,141	From NASA Road	Asphalt
902	-	Observation Deck Parking Pullout	5,535	From Bolsa Ave	Gravel
903	-	Visitor Center Overflow Parking	5,555	From Kitts Highway	Gravel

CHANGES TO THE FISH AND WILDLIFE SERVICE ROAD INVENTORY REPORT

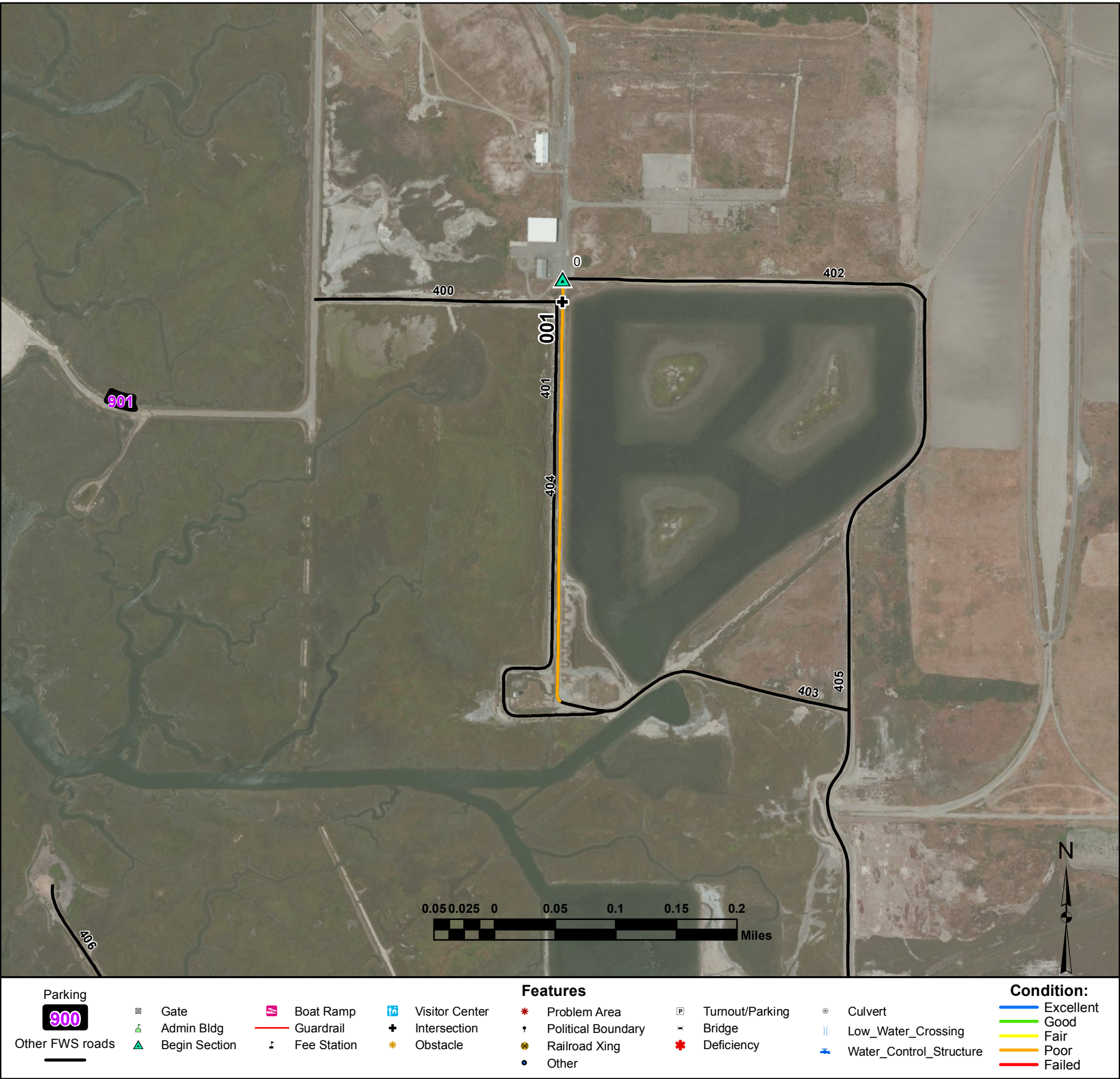
Seal Beach NWR

Routes added to previous inventory:			
Rte #	Rte Name	Reason For Addition	
401	7th Street Dike Road	New Administrative Route	
402	Slough Road East	New Administrative Route	
403	Marsh Road	New Administrative Route	
406	Hog Island Spur Road	New Administrative Route	
903	Visitor Center Overflow Parking	New Public Route	

Routes removed from previous inventory:		
Rte #	Rte Name	Reason For Removal

Routes modified from previous inventory:			
Rte #	Rte Name	Type of Modification	Description of Modification
400	Slough Road West	Functional Class Change, Name Change	
404	7th Street	Functional Class Change	
405	Madera Road	Functional Class Change	

Comments:





900

Other FWS roads

Gate

Admin Bldg

Begin Section

Boat Ramp

Guardrail

Fee Station

Visitor Center

Intersection

Obstacle

Problem Area

Political Boundary

Railroad Xing

Other

Turnout/Parking

Bridge

Deficiency

Culvert

Low_Water_Crossing

Water_Control_Structure

Excellent

Good

Fair

Poor

Failed

Hog Island Spur Road

From Perimeter Road to end of route

Route Number: 406

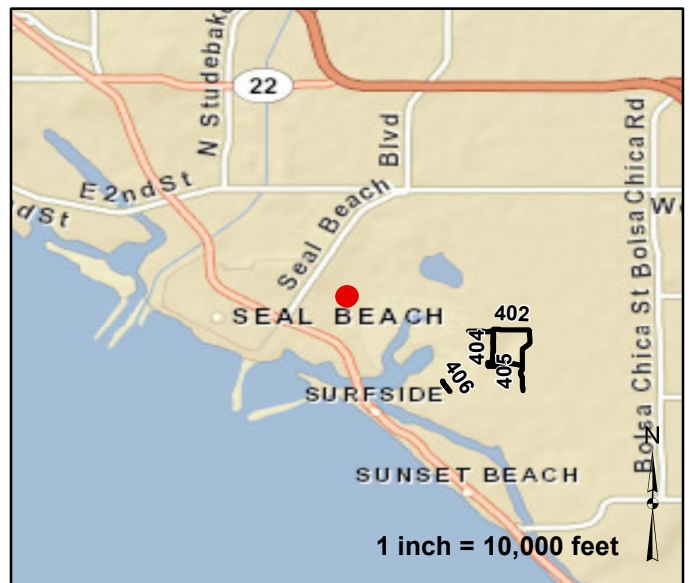
Total Route Mileage: 0.12

Asset Number	10001588				
Section Number	001				
Section Length (miles)	0.12				
Inspection Date	12-05-2011				
Surface Type	Gravel				
Number of Lanes	1				
Roadway Width (feet)	14				
Condition	Good				
Remaining Service Life (years)	7				
Estimated Cost to Repair	\$200				
Current Replacement Value	\$101,200				

Features	Mile Post	Features	Mile Post	Features	Mile Post	Features	Mile Post
Begin Section Culvert	001-0.0 001-0.0						

Route Number:900
Headquarters / Visitors Center Parking
From Kitts Highway

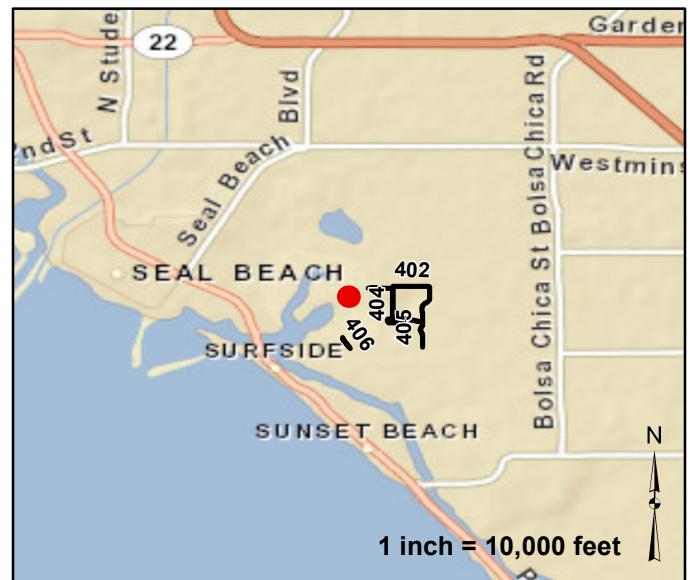
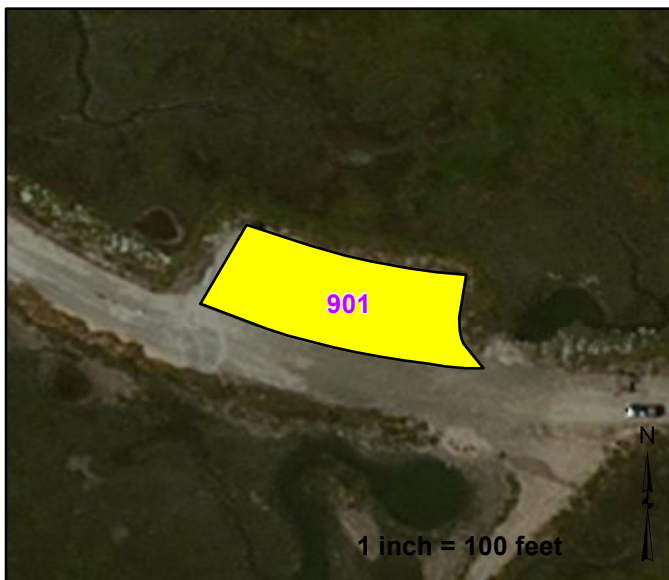
Asset Number	Area	Condition	Surface Type	Cost to Improve	Inspection Date	Current Replacement Value
10001626	4153	Good	Asphalt	\$900	12-05-2011	\$44,800



Parking		Features				Condition:	
Other FWS roads							

Route Number:901
NASA Island Parking Area
From NASA Road

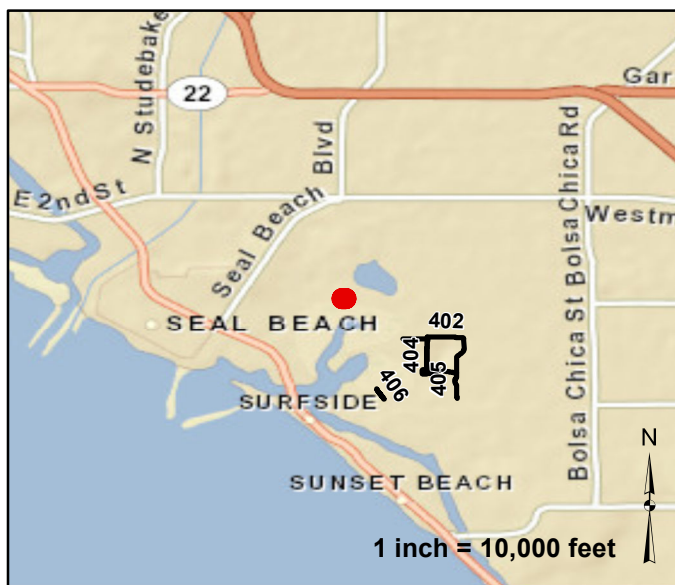
Asset Number	Area	Condition	Surface Type	Cost to Improve	Inspection Date	Current Replacement Value
-	5141	Fair	Asphalt	\$5,200	12-05-2011	\$55,500



Parking			Features			Condition:		
		Gate		Boat Ramp			Excellent	
		Admin Bldg		Guardrail			Good	
Other FWS roads		Begin Section		Fee Station			Fair	
							Poor	
							Failed	

Route Number:902
Observation Deck Parking Pullout
From Bolsa Ave

Asset Number	Area	Condition	Surface Type	Cost to Improve	Inspection Date	Current Replacement Value
-	5535	Good	Gravel	\$1,000	12-05-2011	\$32,600



Parking
 900
 Other FWS roads

Features
 Gate
 Admin Bldg
 Begin Section
 Boat Ramp
 Guardrail
 Fee Station
 Visitor Center
 Other
 Problem Area
 Culvert
 Low_Water_Crossing
 Water_Control_Structure

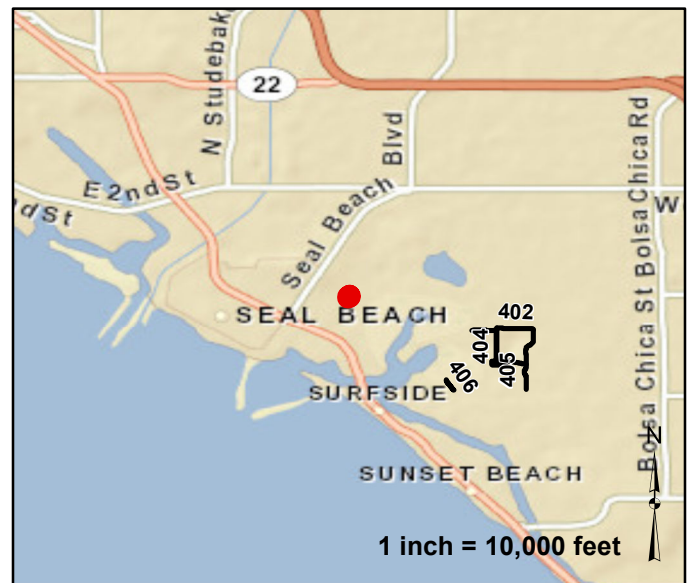
Condition:
 Excellent
 Good
 Fair
 Poor
 Failed

Route Number:903

Visitor Center Overflow Parking

From Kitts Highway

Asset Number	Area	Condition	Surface Type	Cost to Improve	Inspection Date	Current Replacement Value
-	5555	Good	Gravel	\$1,000	12-05-2011	\$32,700



Parking		Features		Condition:	
	Other FWS roads	Gate	Boat Ramp	Visitor Center	Excellent
		Admin Bldg	Guardrail	Other	Good
		Begin Section	Fee Station	Problem Area	Fair
				Culvert	Poor
				Low_Water_Crossing	Failed
				Water_Control_Structure	

Seal Beach Bridge Inventory					
Rte #	Milepost	NBIS #	Sufficiency Rating	Functionally Obsolete	Structurally Deficient
No Bridges to Report					

ROUTE: 400

Features Photographs



Photo: SEBE_C4_0133 Route: 400-001-0.0
Begin Section

ROUTE: 401

Features Photographs



Photo: SEBE_C4_0134 Route: 401-001-0.0
Begin Section

ROUTE: 402

Features Photographs



Photo: SEBE_C4_0135 Route: 402-001-0.0
Begin Section

ROUTE: 403

Features Photographs



Photo: SEBE_C4_0136 Route: 403-001-0.0
Begin Section



Photo: SEBE_C4_0137 Route: 403-001-0.08
Concrete Culvert Box 80ft long 5ft x 8ft 8ft deep
Asset# 10048245



Photo: SEBE_C4_0138 Route: 403-001-0.08
Concrete Culvert Box 80ft long 5ft x 8ft 8ft deep
Asset# 10048245

ROUTE: 404

Features Photographs



Photo: SEBE_C4_0142 Route: 404-001-0.0
Begin Section

ROUTE: 405

Features Photographs



Photo: SEBE_C4_0143 Route: 405-001-0.0
Begin Section

ROUTE: 406

Features Photographs



Photo: SEBE_C4_0140 Route: 406-001-0.0
Metal Culvert 61ft long 48in dia. 7ft deep
Asset# 10048167



Photo: SEBE_C4_0141 Route: 406-001-0.0
Metal Culvert 61ft long 48in dia. 7ft deep
Asset# 10048167



Photo: SEBE_C4_0139 Route: 406-001-0.0
Begin Section

Accident Summary

Number of Accidents Reported	Timespan of Accidents	Injuries	Fatalities
0	No Accidents to Report	0	0

APPENDIX

TABLE 1 - GENERAL FWS ROAD FUNCTIONAL CLASSIFICATION	
Class I	Principal Refuge Road (Public Roads) - Routes that constitute the main access route, main auto tour route, or thoroughfare for refuge visitors. These routes are accessible by 2WD vehicles. Routes are numbered from 10 to 99.
Class II	Connector Refuge Road (Public Roads) - Routes that provide circulation within the refuge. These routes can also provide access to areas of scenic, scientific, recreational or cultural interest, such as overlooks, campgrounds, education centers, etc. These routes are accessible by 2WD vehicles. Routes are numbered from 100 to 199.
Class III	Special Purpose Refuge Road (Public Roads) - Roads that provide circulation within special use areas such as campgrounds or public concessionaire facilities or access to remote areas of the refuge. These routes may not be 2WD accessible. Routes are numbered from 200 to 299
Class IV	Administrative Access Road (Administrative Roads) - Routes intended for access to administrative developments or structures such as maintenance offices, employee quarters, or utility areas. These routes are accessible by 2WD vehicles. These routes may restrict access to the general public. Routes are numbered from 300 to 399.
Class V	Restricted Road (Administrative Roads) - Routes normally closed to the public, such as maintenance roads, service roads, patrol roads, and fire breaks. These routes may be open to the public for a short period of time for a special use, such as hunting access. These routes may not be 2WD accessible. Routes are numbered from 400 to 499.

A refuge road system contains those routes within or giving access to a refuge or other unit of the FWS that are administered by the FWS, or by the Service in cooperation with other agencies. The assignment of a functional classification (FC) to a refuge road is not based on traffic volumes or design speed, but on the intended use or function of that route

DESCRIPTION OF RATING SYSTEM

Rating Data is collected on four different surface types: Asphalt, Concrete, Gravel, and Native. The Utah LTAP Center's Remaining Service Life (RSL) system is used for all surface types. The RSL system is based on the Strategic Highway Research Program's (SHRP) Distress Identification Manual.

Asphalt Rating System

Data is collected on the following distresses and conditions:

- **Fatigue Cracking** - Interconnected cracks forming small irregular shapes.
- **Longitudinal Cracking** - Cracks running parallel with the roadway, in the direction of traffic.
- **Transverse Cracking** - Cracks perpendicular to the roadway, going across the lane or lanes.
- **Block Cracking** - Interconnected cracks forming large blocks.
- **Edge Cracking** - Cracks running along the edge of the pavement surface.
- **Patches** - Original surface repaired with new asphalt patch material.
- **Potholes** - Holes or depressions in the pavement.
- **Rutting** - surface depressions in the wheel paths.
- **Roughness** - Evenness of pavement for serviceability.
- **Drainage** - Ability of the road surface to drain water based on proper slope.

A Condition Rating value is calculated for each homogenous pavement section, and can be up to 1 mile in length.

Rating Index Formula

Fatigue, longitudinal, transverse, block, and edge cracking, along with patching and potholes are rated on a 0 - 9 scale (0 = no distress, 9 = maximum distress). The rating given is based on the extent and the severity of the distress. Rutting, roughness, and drainage are rated on a 0 - 3 scale (0 = excellent, 3 = poor). Each distress type has given Remaining Service Life (RSL) values (in years) based on the rating for that particular distress. The distress with the rating resulting in the lowest RSL value is considered to be the governing distress. That value is then assigned as the RSL of the road segment.

Concrete Rating System

Data is collected on the following distresses and conditions:

- **Spalling of Joints** - Chipping, breaking, or cracking of slab edges
- **Joint Seal Damage** - Any damage or condition that enables materials or water to infiltrate into the joint from the surface.
- **Corner Breaks** - A portion of the slab separated by a crack that intersects the adjacent transverse and longitudinal joints, forming approximately a 45° angle to the direction.
- **Broken Slabs** - Faulting and/or cracking localized to individual slabs.

- **Faulting** – Difference in elevation across a crack or joint.
- **Longitudinal Cracking** – Cracks in the pavement running parallel to road.
- **Transverse Cracking** - Cracks in the pavement running perpendicular to the direction of traffic.
- **Patch Deterioration** – Faulting, settling, or cracking of previously placed patch
- **Map Cracking** – A series of cracks that extend only into the upper surface of the Slab

A Condition Rating value is calculated for each homogenous pavement section, and can be up to 1 mile in length.

Rating Index Formula

The rating procedure for concrete pavement is the same as that for asphalt pavement described previously. Each of the distresses described above are rated on the same 0 – 9 scale. The governing distress is then determined and the RSL associated with that distress is assigned to the road segment.

Gravel and Native Rating System

Data is collected on the following distresses and conditions:

- **Cross Section (Crown)** - Roadway built so that the center is higher than the shoulder, to prevent water from pooling on roadway.
- **Roadside Drainage** - Roadside ditches and culverts to handle water flow and prevent pooling on the roadside.
- **Corrugations (Washboarding)** - Small trenches or holes developing perpendicular to the roadway.
- **Potholes** - Holes or depressions in the roadway.
- **Rutting** - Depressions running parallel with the roadway, in the wheelpaths.
- **Dust** - Amount of dust caused by traffic.
- **Loose Aggregate (Gravel Only)** - Loose gravel, typically piled up on the roadway edges or centerline.

A Condition Rating value is calculated for each homogenous pavement section, and can be up to 1 mile in length.

Rating Index Formula

The rating procedure for unpaved roads is the same as that for asphalt and concrete pavements described previously. Of the distresses described above, corrugations, potholes, rutting, and loose aggregate are rated on the same 0 – 9 scale previously mentioned. Cross section, roadside drainage, and dust are rated on the same 0 – 3 scale described for asphalt pavement. The governing distress is then determined and the RSL associated with that distress is assigned to the road segment.

Condition Descriptions by Surface Type

The following definitions are used to describe pavement condition for the various surface types. These are general guidelines for condition indications.

Asphalt

Excellent – Recently constructed or overlaid road where construction or overlay was performed correctly- No maintenance required. RSL = 19-20 years.

Good – Low extent longitudinal and transverse cracks. All cracks are 1/4" or less with little or no crack erosion. Patches are in good condition and applied correctly. Routine Maintenance recommended. RSL = 13-18 years.

Fair - Roads are in good structural condition with little or no fatigue cracking. Longitudinal, transverse, and edge cracking is at medium extent and severity. Block cracking is not extensive. Any patches are in good condition. Preventative maintenance recommended. RSL = 7-12 years.

Poor - Road beginning to show signs of structural distress. Fatigue cracking is medium to high extent and medium severity. Cracking will be severe. Surface may have severe block cracking and show. Patches are in fair to poor condition. There is moderate distortion or rutting and occasional potholes. Rehabilitation recommended. RSL = 1-6 years.

Failed - Road is severely deteriorated. Signs of structural failure appear along with severe and extensive fatigue cracking, distortion, potholes, or extensive patches in poor condition. Reconstruction recommended. RSL = 0 years.

Concrete

Excellent - New pavement. No maintenance required. RSL = 19-20 years

Good - First signs of transverse cracking, patch or repair, more extensive pop-outs, or scaling. Sealing or routine maintenance recommended. RSL = 13-18 years.

Fair – Pavement has joint or crack spalling, and/or faulting, along with cracking at corners with broken pieces. Any Patches are in fair condition and faulting is at a minimum. Preventative maintenance recommended. RSL = 7-12 years.

Poor - Joints and cracks are open 1 inch, spalled, or patched. Faulting is more severe. Rehabilitation recommended. RSL = 1-6 years.

Failed - Most slabs have failed structurally, and faulting is severe. Reconstruction recommended. RSL = 0 years.11-9

The following table shows the relationship between RSL and condition.

SUBJECTIVE CONDITION RATING FOR REMAINING SERVICE LIFE (Asphalt and Concrete Pavements)								
	FAILED	POOR		FAIR		GOOD		EXCELLENT
RSL Years	0	1-3	4-6	7-9	10-12	13-15	16-18	19-20

Gravel and Native

Note - Native surfaces do not have a gravel layer.

Excellent - Newly constructed road that has been constructed properly with proper crown, drainage and gravel layer. Little or no distress. No maintenance recommended. RSL = 8-10 years.

Good - Crown, drainage provisions, and gravel layer are in good condition. Distress limited to traffic effects such as dust, loose aggregate, and low severity corrugations (wash boarding). RSL = 5-7 years.

Fair - Adequate drainage and crown through majority of roadway. Crown repair, ditch improvement may be necessary. Road has more severe corrugations and potholes. Preventative maintenance recommended. RSL = 3-4 years.

Poor - Travel at slow speeds is necessary. Additional gravel layer needed to carry traffic. Poor crown. Ditching is inadequate and rutting is extensive and severe. Rehabilitation recommended. RSL = 1-2 years.

Failed - Travel is difficult, and road may be closed at times. Rutting and Corrugations are very severe. Total Reconstruction of road is recommended. RSL = 0 years.

The following table shows the RSL values for gravel and native roads in terms of excellent, good, fair, poor, and failed condition.

SUBJECTIVE CONDITION RATING FOR REMAINING SERVICE LIFE (Gravel and Native Surfaces)					
	FAILED	POOR	FAIR	GOOD	EXCELLENT
RSL Years	0	1-2	3-4	5-7	8-10

NATIVE PRIMITIVE/IMPROVED RATING SHEET

Cross Section (Crown)*

Severity	Condition		Description
	No Defects	0	Crown 4-6" with no restriction of water flow from centerline to ditch.
	Minor Defects	1	Inadequate or inconsistent crown. Drainage to ditch may be restricted.
	Moderate Defects	2	Flat crown, drainage to ditch restricted.
	Major Defects	3	Reverse crown, bowl-shaped road, drainage on roadway

Rutting

Severity	Extent (Length)			
	No Defects	Low <10%	Med 10-30%	High >30%
	Low < 6"	1	2	3
	Med 6-12"	4	5	6
	High > 12"	7	8	9

Roadside Drainage*

Severity	Condition		Description
	No Defects	0	Wide, deep ditches (>4') with no restriction to water flow.
	Minor Defects	1	Adequate ditches (>2' deep), minor obstructions restrict water flow.
	Moderate Defects	2	Shallow, narrow and obstructed ditches. Minor erosion of road.
	Major Defects	3	No ditch, drainage on roadway with moderate to severe erosion.

Potholes

Severity	Extent (Area)			
	No Defects	Low <10%	Med 10-30%	High >30%
	Low < 6"	1	2	3
	Med 6-12"	4	5	6
	High > 12"	7	8	9

Dust

Severity	Condition		Description
	No Defects	0	No obstruction to sight distance.
	Minor Defects	1	Sight distance > 550'
	Moderate Defects	2	Sight distance 225'-550'
	Major Defects	3	Sight distance < 225'

Corrugations

Severity	Extent (Length)			
	No Defects	Low <10%	Med 10-30%	High >30%
	Low < 3"	1	2	3
	Med 3-6"	4	5	6
	High > 6"	7	8	9

* Crown and Drainage are not rated for roads that have no constructed crown or drainage. This applies to Native and Gravel roads.

GRAVEL RATING SHEET

Cross Section (Crown)

Severity	Condition		Description
	No Defects	0	Crown 4-6" with no restriction of water flow from centerline to ditch.
	Minor Defects	1	Inadequate or inconsistent crown. Drainage to ditch may be restricted.
	Moderate Defects	2	Flat crown, drainage to ditch restricted.
	Major Defects	3	Reverse crown, bowl-shaped road, drainage on roadway

Rutting

Severity	No Defects	Extent (Length)		
		Low <10%	Med 10-30%	High >30%
	Low < 1"	1	2	3
	Med 1-3"	4	5	6
	High > 3"	7	8	9

Roadside Drainage

Severity	Condition		Description
	No Defects	0	Wide, deep ditches (>4') with no restriction to water flow.
	Minor Defects	1	Adequate ditches (>2' deep), minor obstructions restrict water flow.
	Moderate Defects	2	Shallow, narrow and obstructed ditches. Minor erosion of road.
	Major Defects	3	No ditch, drainage on roadway with moderate to severe erosion.

Potholes

Severity	No Defects	Extent (Area)		
		Low <10%	Med 10-30%	High >30%
	Low < 1"	1	2	3
	Med 1-3"	4	5	6
	High > 3"	7	8	9

Dust

Severity	Condition		Description
	No Defects	0	No obstruction to sight distance.
	Minor Defects	1	Sight distance > 550'
	Moderate Defects	2	Sight distance 225'-550'
	Major Defects	3	Sight distance < 225'

Corrugations

Severity	No Defects	Extent (Length)		
		Low <10%	Med 10-30%	High >30%
	Low < 2"	1	2	3
	Med 2-4"	4	5	6
	High > 4"	7	8	9

* Crown and Drainage are not rated for roads that have no constructed crown or drainage. This applies to Native and Gravel roads.

Loose Aggregate

Severity	No Defects	Extent (Area)		
		Low <10%	Med 10-30%	High >30%
	Low < 1"	1	2	3
	Med 1-3"	4	5	6
	High > 3"	7	8	9

ASPHALT RATING SHEET

Fatigue Cracking

Severity	Extent			
	No Defects	Low 1 crack WP	Med 2 cracks WP	High >30% length
	Low-Cracks < 1/4"	1	2	3
	Med-Cracks 1/4-3/4"	4	5	6
	High-Cracks > 3/4"	7	8	9

Edge Cracking

Severity	Extent (Length)			
	No Defects	Low <10%	Med 10-30%	High >30%
	0-6" from curb	1	2	3
	6-18" from curb	4	5	6
	> 18" from curb	7	8	9

Longitudinal Cracking

Severity	Extent			
	No Defects	Low 1 crack full length	Med 2 cracks full length	High >2 cracks full length
	Low-Cracks < 1/4"	1	2	3
	Med-Cracks 1/4-3/4"	4	5	6
	High-Cracks > 3/4"	7	8	9

Block Cracking

Severity	Extent (Length)			
	No Defects	Low > 15x15' squares	Med 15-10' squares	High <10x10' squares
	Low-Cracks < 1/4"	1	2	3
	Med-Cracks 1/4-3/4"	4	5	6
	High-Cracks > 3/4"	7	8	9

Transverse Cracking

Severity	Extent (ft between cracks)			
	No Defects	Low > 200'	Med 200-50'	High < 50'
	Low-Cracks < 1/4"	1	2	3
	Med-Cracks 1/4-3/4"	4	5	6
	High-Cracks > 3/4"	7	8	9

Utility Cuts

Severity	Extent (Length)			
	No Defects	Low <10%	Med 10-30%	High >30%
	Low-Cracks < 1/4"	1	2	3
	Med-Cracks 1/4-3/4"	4	5	6
	High-Cracks > 3/4"	7	8	9

Drainage/Roughness/Rutting

Severity	Condition		Description
	No Defects	0	Wide, deep ditches with no obstructions, smooth ride, no rutting, no potholes.
	Minor Defects	1	Drainage may be obstructed, < 1" rutting, minor roughness.
	Moderate Defects	2	Poor drainage, 1-2" rutting, noticeable roughness, potholes < 6" wide.
	Major Defects	3	No drainage; > 2" rutting; potholes 6-12" wide create roughness requiring reduced speeds.

CONCRETE RATING SHEET

Spalling of Joints

Extent (% joints)				
No Defects	Low <10%	Med 10-20%	High >20%	
Severity	Low Spalls < 3"	1	2	3
	Med Spalls 3-6"	4	5	6
	High Spalls > 6"	7	8	9

Broken Slabs

Extent (% slabs)				
No Defects	Low <5%	Med 5-15%	High >15%	
Severity	Low-no more than 3 pieces, no spalling/faulting	1	2	3
	Med-broken into >3 pieces, spalling/faulting <1/4"	4	5	6
	High-4 or more pieces, spalling/faulting >1/4"	7	8	9

Transverse Cracks

Extent (% slabs)				
No Defects	Low <10%	Med 10-20%	High >20%	
Severity	Low-Cracks < 1/8"; no spalling/faulting	1	2	3
	Med-Cracks 1/8-1/2"; spall <3", fault >1/4"	4	5	6
	High-Cracks > 1/2"; spall >3", fault >1/4"	7	8	9

Joint Seal Damage

Extent (%joints)				
No Defects	Low <10%	Med 10-20%	High >20%	
Severity	Low <10% joint length	1	2	3
	Med 10-50% joint length	4	5	6
	High >50% joint length	7	8	9

Faulting

Extent (Length)				
No Defects	Low <10%	Med 10-30%	High >30%	
Severity	Low < 1/2"	1	2	3
	Med 1/2-1"	4	5	6
	High > 1"	7	8	9

Patch Deterioration

Extent (Area)				
No Defects	Low <10%	Med 10-30%	High >30%	
Severity	Low-no fault, no settle at perimeter	1	2	3
	Med-fault & settle <1/4" at perimeter	4	5	6
	High-fault & settle >1/4" at perimeter, cracked patch	7	8	9

Corner Breaks

Extent (% of slabs)				
No Defects	Low <10%	Med 10-20%	High >20%	
Severity	Low-corner cracks, no spalling or faulting	1	2	3
	Med-crack slightly spalled & faulted <1/4"	4	5	6
	High-crack highly spalled & faulted >1/4"	7	8	9

Longitudinal Cracks

Extent (% slabs)				
No Defects	Low <10%	Med 10-20%	High >20%	
Severity	Low-Cracks < 1/8"; no spalling/faulting	1	2	3
	Med-Cracks 1/8-1/2"; spall <3", fault >1/2"	4	5	6
	High-Cracks > 1/2"; spall >3", fault >1/2"	7	8	9

Map Cracks

Extent (Area)				
No Defects	Low <10%	Med 10-20%	High >20%	
Severity	Low-small connected cracks, no spalling	1	2	3
	Med-connected cracks, no spalling	4	5	6
	High-large connected cracks with surface spalling	7	8	9

Deficiency Ratings With Associated Remaining Service Life

Asphalt Rating Sheet

Fatigue Cracking		Edge Cracking		Transverse Cracking		Utility Cuts	
Distress Rating	Remaining Service Life	Distress Rating	Remaining Service Life	Distress Rating	Remaining Service Life	Distress Rating	Remaining Service Life
0	20	0	20	0	20	0	20
1	10	1	12	1	14	1	14
2	8	2	10	2	12	2	12
3	6	3	8	3	10	3	10
4	8	4	10	4	12	4	12
5	6	5	8	5	10	5	10
6	4	6	6	6	8	6	8
7	6	7	8	7	10	7	10
8	2	8	6	8	6	8	6
9	0	9	4	9	2	9	2

Longitudinal Cracking		Block Cracking		Drainage/Roughness/Rutting	
Distress Rating	Remaining Service Life	Distress Rating	Remaining Service Life	Distress Rating	Remaining Service Life
0	20	0	20	0	20
1	14	1	12	1	16
2	12	2	10	2	10
3	10	3	8	3	4
4	12	4	10		
5	10	5	8		
6	8	6	6		
7	10	7	12		
8	8	8	6		
9	6	9	2		

Concrete Rating Sheet

Spalling		Broken Slabs		Transverse Cracks	
Distress Rating	Remaining Service Life	Distress Rating	Remaining Service Life	Distress Rating	Remaining Service Life
0	20	0	20	0	20
1	15	1	15	1	18
2	12	2	12	2	15
3	10	3	10	3	12
4	12	4	12	4	15
5	10	5	10	5	10
6	8	6	8	6	6
7	10	7	10	7	10
8	6	8	6	8	4
9	0	9	0	9	0

Joint Seal Damage		Faulting		Patch Deterioration	
Distress Rating	Remaining Service Life	Distress Rating	Remaining Service Life	Distress Rating	Remaining Service Life
0	20	0	20	0	18
1	16	1	15	1	16
2	14	2	12	2	14
3	12	3	10	3	12
4	14	4	12	4	12
5	10	5	8	5	10
6	8	6	6	6	8
7	12	7	10	7	10
8	8	8	4	8	6
9	6	9	0	9	0

Corner Breaks		Longitudinal Cracks		Map Cracks	
Distress Rating	Remaining Service Life	Distress Rating	Remaining Service Life	Distress Rating	Remaining Service Life
0	18	0	20	0	20
1	16	1	18	1	18
2	14	2	15	2	15
3	12	3	12	3	12
4	12	4	15	4	12
5	10	5	10	5	10
6	8	6	6	6	6
7	10	7	10	7	10
8	6	8	4	8	4
9	0	9	0	9	0

SUBJECTIVE CONDITION RATING FOR REMAINING SERVICE LIFE IN YEARS (Asphalt & Concrete Roads)

RSL	FAILED 0	POOR 1 - 6	FAIR 7 - 12	GOOD 13 - 18	EXCELLENT 19 - 20
-----	-------------	---------------	----------------	-----------------	----------------------

Deficiency Ratings With Associated Remaining Service Life

Native Primitive Improved Rating Sheet

Cross Section		Rutting		Roadside Drainage	
Distress Rating	Remaining Service Life	Distress Rating	Remaining Service Life	Distress Rating	Remaining Service Life
0	10	0	10	0	10
1	7	1	9	1	8
2	5	2	7	2	4
3	0	3	5	3	0
		4	7		
		5	4		
		6	3		
		7	4		
		8	2		
		9	0		

Potholes		Dust		Corrugations	
Distress Rating	Remaining Service Life	Distress Rating	Remaining Service Life	Distress Rating	Remaining Service Life
0	10	0	10	0	10
1	9	1	8	1	9
2	7	2	6	2	7
3	5	3	2	3	7
4	7			4	6
5	4			5	5
6	3			6	5
7	4			7	4
8	2			8	3
9	0			9	0

Gravel Rating Sheet

Cross Section		Rutting		Roadside Drainage	
Distress Rating	Remaining Service Life	Distress Rating	Remaining Service Life	Distress Rating	Remaining Service Life
0	10	0	10	0	10
1	7	1	9	1	8
2	5	2	7	2	4
3	0	3	5	3	0
		4	7		
		5	4		
		6	3		
		7	4		
		8	2		
		9	0		

Potholes		Dust		Corrugations	
Distress Rating	Remaining Service Life	Distress Rating	Remaining Service Life	Distress Rating	Remaining Service Life
0	10	0	10	0	10
1	9	1	8	1	9
2	7	2	6	2	7
3	5	3	2	3	7
4	7			4	6
5	4			5	5
6	3			6	5
7	4			7	4
8	2			8	3
9	0			9	0

Loose Aggregate	
Distress Rating	Remaining Service Life
0	10
1	9
2	8
3	7
4	8
5	7
6	6
7	5
8	3
9	0

SUBJECTIVE CONDITION RATING FOR REMAINING SERVICE LIFE IN YEARS (Gravel & Native Roads)

RSL	FAILED	POOR	FAIR	GOOD	EXCELLENT
	0	1 - 2	3 - 4	5 - 7	8 - 10