

**AQUATIC TRANSECTS
1963**

run by

**Manager Bradley
and
Wildlife Aid Capel**

with assistance from Merrill Hammond

SCIENTIFIC NAMES OF PLANTS IN REPORT

COMMON NAME	SCIENTIFIC NAME
1. Sago	1. <u>Potamogeton pectinatus</u>
2. River bullrush	2. <u>Scirpus fluviatilis</u>
3. Hardstem bullrush	3. <u>Scirpus acutus</u>
4. American (common) three-square	4. <u>Scirpus americanus</u>
5. Softstem bullrush	5. <u>Scirpus validus</u>
6. Prairie (alkali) bullrush	6. <u>Scirpus paludosus</u>
7. Sow thistle	7. <u>Sonchus</u> sp.
8. Canada thistle	8. <u>Cirsium arvense</u>
9. Buckbrush	9. <u>Symphoricarpos occidentalis</u>
10. Rose	10. Rosa <u>Rosa</u> spp.
11. Cane	11. <u>Phragmites communis</u>
12. Duckweed	12. <u>Lemna minor</u>
13. Duckweed(2) incl. 12 and	13. <u>Lemna trisulca</u> (star duckweed)
14. Cattail	14. <u>Typha</u> spp.
15. Sedge	15. <u>Carex</u> spp.
16. Alisma	16. <u>Alisma</u> sp.
17.. White-top	17. <u>Schloachloa festucacea</u>
18. Cord grass	18. <u>Spartina</u> sp.
19. Sweet clover	19. <u>Melilotus</u> spp.
20. Arrowhead	20. <u>Sagittaria</u> spp.
21. Slough grass	21. <u>Beckmania</u> sp.
22. Smartweed	22. <u>Polygonum</u> spp.
23. Water milfoil	23. <u>Myriophyllum</u> spp.
24. Claspingleaf pondweed	24. <u>Potamogeton perfoliatus</u>
25. Spike-rush	25. <u>Eleocharis</u> sp.
26. Dock	26. <u>Rumex</u> spp.
27. Blue lettuce	27. ? <u>Lactuca</u>
28. Flixweed	28. ?
29. Peppergrass	29. ? <u>Lepidium</u>
30. Wild barley	30. <u>Hordeum</u> sp.
31. Wild millet	31. <u>Echinochloa</u> sp.

DENSITY KEY

- * is moderately dense
- ** is medium dense
- *** is dense
- **** is exceptionally dense

UNIT 1 Transect North West to East

gauge reading 12.02

3' Remainder of Transect
A B

<u>Segment</u>	<u>Vegetation</u>
A	River bullrush and softstem bullrush
B	Open water

Unit 1 Trnasect South West to East

25' 170' 625' 400' 20' 360' 40'
A B C D E F G

<u>Segment</u>	<u>Vegetation</u>
A	Predominantly river bullrush with some softstem
B	Sago, fairly dense (4' water depth to land)
C	open water
D	Scatterings of sago
E	Sago dense ($3\frac{1}{2}$ ' of water)
F	Occasional sago
G	Sago dense (3' of water to land)

UNIT 2 Transect East to West

gauge reading 9.06

75'	10'	25'	25'	65'	40'	50'	255'	40'	30'	45'
A	B	C	D	E	F	G	H	I	J	K
235'	140'	200'	245'	20'	10'	20'				
L	M	N	O	P	Q	R				

<u>Segment</u>	<u>Water Depth</u>	<u>Vegetation</u>
A	land	sow and canada thistle, buckbrush, rose, & upland weeds
B	land	Phragmites
C	0-36"	Phragmites, and duckweed
D	36-48"	Sago*, and duckweed
E	48/ to 40"	Duckweed
F	40-36"	Sago*, duckweed
G	36-24"	Sago*, duckweed, and dead cattail
H G ₁	24"	Sago, duckweed, cattail (dead),,and softstem
I H	24"-40"	Softstem**, and river bullrushes, sedge, cattail, Alisma
XI	40"	Sago (thin)
J	open water	Sago (very thin)
K	Sago	Sago***
L		Softstem** and river bullrush, with a little sago
M		Sago***
N	open water	No vegetation
O		Sago***
P	25-0"	White-top, river bullrush
Q	land	White-top
R	land	Upland grasses and weeds

UNIT 3 Transect - East to West

gauge reading 9.04

5'	30'	15'	140'	185'	1550'
A	B	C	D	E	F

<u>Segment</u>	<u>Water Depth</u>	<u>Vegetation</u>
A	land	Cord grass
B	0-30"	Softstem*** and hardstem bullrushes, and River** bullrush
C	30-36"	Sago***
D	36"/	No vegetation
E	42"	Sago*** best seeding on refuge
F		Interspersion of softstem and sago mostly with a little river bullrush and Alisma

UNIT 4 North Transect West to East

gauge reading 9.16

5'	---	385'
A	B	C

<u>Segment</u>	<u>Water Depth</u>	<u>Vegetation</u>
A	land	Cord grass
B	----	Open water with no vegetation
C	54"-land	Sago (sparse to medium dense) No emergents at shoreline

UNIT 4 South Transect West to East

gauge reading 9.16

15'	110'	---	785'
A	B	C	D

<u>Segment</u>	<u>Water Depth</u>	<u>Vegetation</u>
A	land-32"	Cord grass
B	32-66"	Sagp (dense)***
C	66"/	No vegetation
D	60-land	Sago (thin) No emergents on shore

UNIT 4-A - East to West

gauge reading 9.16

25'	20'	50'	---	20'	20'	50'	40'
A	B	C	D	E	F	G	H

<u>Segment</u>	<u>Water Depth</u>	<u>Vegetation</u>
A	0-18"	River bullrush
B	18-30"	River and softstem bullrushes, duckweed
C	30-36"	No vegetation
D	36-26"	Sago*** (well seeded)
E	26-15"	River and hardstem bullrushes (sparse)
F	15-0"	River*** and hardstem** bullrushes, and duckweed
G	land	cord grass
H	land	Upland weeds

UNIT 6 Transect 33540 to 33541

gauge reading 5.72

90'

90'	35'	25'	60'	---	---	210'	60'	30'
A	B	C	D	E	R	G	H	I

45'	50'	125'	135'	ditch
J	K	L	M	

<u>Segment</u>	<u>Water Depth</u>	<u>Vegetation</u>
----------------	--------------------	-------------------

A	land	Sweet clover, annuals and perennials
B	0-14"	Sagittaria, softstem, slough grass, duckweed(2), white-top
C	14-20"	Softstem**, cattail**, white-top, duckweed(2), cane**, smartweed
D	20-28"	Softstem*, river* bullrushes, duckweed (2), & occasional cattail
E	28-40"	Water milfoil**, claspingleaf*and sago pondweeds*, and scattered Sagittaria
G	36-30"	Sagittaria**, water milfoil*, claspingleaf and sago
H	30-20"	Sago*(fruiting), river bullrush*, Sagittaria, duckweed(2), claspingleaf, & water milfoil
I	20-13"	Softstem**, sago*, duckweed
J	13-9"	Sago*, prairie* and softstem bullrushes, Eleocharis, Alsina, duckweed, cattail, white-top
K	9-0"	White-top*, river* and softstem bullrushes, Sagittaria, duckweed
L	land	White-top, river bullrush(at first), dock and annual weeds
M	land	Upland weeds

UNIT 6 Transect 33522to 33524

gauge reading 5.72

15'	35'	25'	135'	140'	120'	175'	100'	100'
A	B	C	D	E	F	G	H	I
40'	30'	275'	50'	100'	60'	155'	40'	
J	K	L	M	N	O	P	Q	

Segment	Water Depth	Vegetation
A	land	sow thistle, uplands, and some river bullrush near water
B	10-14" 10-14"	White-top**, river**bullrush, cattail, duckweed(2)
C	14-18"	River** and softstem bullrush, Eleocharis, duckweed(2), Sagittaria, sago
D	18-24"	River bullrush**, duckweed(2), sago(fades out)
E	24-30"	Sago**, water milfoil, claspingleaf, duckweed(2), with some cattail and river bullrush
F	River bullrush	
F	30"	River bullrush*** and duckweed
G	30"	Open water alternating with sago and claspingleaf
H	24"	Sago and Sagittaria
I	24"	Sago***
J	24"	River bul'rush***
K	24"	Sago & water milfoil
L	20-18"	River** & softstem bullrush, white-top**, duckweed(2), cattail
M	18-15"	River** and softstem** bullrushes, Eleocharis, duckweed(2), Sagittaria, prairie bullrush
N	15-10"	River* prairie* and softstem bullrush, Eleocharis*, duckweed(2), and Sagittaria
O	10-5"	Alisma*, duckweed
P	5-0"	White-top**, duckweed, river, prairie and softstem bullrushes, and dock
Q	land	upland weeds

UNIT 6 Transect 33523 to 33525

gauge reading 5.72

10'	20'	25'	20'	55'	175'	180'	380'	110'	45'
A	B	C	D	E	F	G	H	I	J
14'	295'	45'	12'	250'					
	K	L	M	N					

<u>Segment</u>	<u>Water Depth</u>	<u>Vegetation</u>
A	land	White-top, upland weeds
B	0-6"	River bullrush
C	6-8"	White-top, duckweed
D	8"	Mostly open with some prairie bullrush
E	8-9"	White-top**, prairie and river bullrush, duckweed
F	9-15"	River** and softstem bullrush, cattail*, white-top*, cane, duckweed
G	15-22"	White-top**, softstem* and river bullrush, cattail, duckweed(2)
H	22-12"	Cattail**, white-top*, softstem*, duckweed(2), river Bullr.
I	12"	White-top*, softstem*, Cattail*, river br., Sagittaria, duckweed
J	12-10"	Cattail*, sedge*, river, prairie, & softstem bullrushes, sago, white-top, duckweed
K	10-5"	Eleocharis*, sedge*, white-top*, river br., cattail, smartweed, duckweed
L	5-2"	River***, duckweed
M	20* 2-0"	softstem and river br.
N	land to ditch	Sedge, river br., dock, sow thistle, upland grasses

Marsh Transects

Des Lacs Refuge

August 9, 1963

Unit 7Transect 33520 to 33521 (north marsh) (Hammond)

<u>Segment Number</u>	<u>Water depth at end.</u>	<u>Length</u>	<u>Plants</u>
A	Dry	70'	Brome, 100%. To old marsh margin, Trace of Spartina, dead river bul.
B	Dry	50'	Annual weeds, Rumex mex., blue lettuce, sow thistle, Canada thistle, flixweed, pepper grass. Dead bulrush spp.
C	Dry	36'	Whitetop, Phragmites, weeds.
D	Dry	120'	Hordeum dominant, whitetop, alkali and river bulrush traces.
E	Dry (water starts)	81'	Mixed marsh: Eleocharis palustris; river, softstem and alkali bulrushes; Carex; trace of cattails.
F	(Channel) 15" maximum depth. Open portion with Sagittaria about 30' wide. Total 110 feet. Dense marsh, softstem, river bul, cattails, Lemna.		
G	1 inch	240'	River bulrush with understory of Eleocharis palustris.
H	1-2 inches	240'	Same, but 5 to 6 feet tall and with softstem present.
I	$\frac{1}{2}$ inch	300'	Solid Eleocharis palustris with scattered river bulrush.
J	Wet	264'	Eleocharis pal. dominant plus river bulrush. Weak blue lettuce. Saw Virginia rail (flushed).
K	Damp	114'	Sow thistle dominant. Eleocharis pal., whitetop.

Marsh Transects

Des Lacs Refuge

August 9, 1963

Unit 7Transect 1. (Hammond, east marsh portion)

gauge reading 2.90

Start at point directly under west side of bridge.

<u>Segment</u>	<u>Water depth</u>	<u>Length</u>	<u>Plants</u>
A	Dry	50'	Whitetop, river bul., sow thistle.
B	Wet at end	50'	Solid, dense softstem dominant, Carex, river bulrush (density '')
C	12" at end	50'	Same as B.
D	(14" at end of 50')	65'	Same as B, but half open.
E	10" at end	35'	Solid river bulrush and softstem 6 feet tall.
F	9" at end	50'	Same as E.
G	9" at end	50'	Same as E, reduced density, patches of dead weeds.
H		25'	Same as G.
I	12" at end	25'	Open, dead weeds, Aphanizomenon bad.
J		6'	Same as I.
K	24" at end	44'	River bulrush, softstem, trace of cattails, density ''.
L	25" 35" end	50'	Softstem and river bul. density ''.
M	40" at end	50'	Softstem, density '. Trace sago. (NO seed)
N	42" at end	50'	Trace of softstem.
Edge of open water			
O	48" to 40"	---	No vegetation
P		200'	Hardstem bullrush

Marsh Transects

Des Lacs Refuge

August 9, 1963

Unit 7Transect 2. (Hammond, east marsh portion) gauge reading 2.90

Start at Post anchor at south corner of water easement.

<u>Segment</u>	<u>Water</u>	<u>Length</u>	<u>Plants</u>
A	Dry	20'	3 square bulrush, Carex, alkali bulrush, Eleocharis palustris, river bulrush. Wet edge at end of Segment.
B	2" at end	50'	Softstem.
C		80'	Solid river and softstem bulrush 7 feet tall.
D	12½" at end	10'	Scattered alkali, river, and softstem bulrush with openings, moderate density.
E	24" at end	50'	Same as D.
F		30' 20'	Openwater Same as D.
G	34" at end	20' 30'	Open water.
H	37½" "	50'	Moderate softstem and river bulrush, thin whitetop.
I	40" "	50'	Same as H.
J	42" "	50'	Whitetop and softstem thickens at junction of I & J. J has sparse whitetop, softstem.
K	41½" "	50'	Sparse flumina, trace of softstem, Aphanizomenon fairly heavy.
<hr/>			
(Boundary of openwater.)			
L	54"	---	Sago**
M	60"	---	Sago***
N	66"	---	"Kenmare scum"
O	42"	---	Sago***
P	30"	80'	White-top, sago
Q	30"	100'	Sago**
R	30-0"	45'	Millet and river bullrush

Marsh Transects

Des Lacs Refuge

August 9, 1963

Unit 7

Transect 3 (Hammond, east marsh portion) (Start at lower edge or rocky slope west of underpass)

<u>Segment</u>	<u>Water depth at end</u>	<u>Length</u>	<u>Plants</u>
A	14"	50'	Scattered wild millet, trace of river bulrush, Dead weeds dominant.
B	20"	50'	Softstem, alkali, river bulrush, Lemna. Density ''.
C	10	10'	Same as B.
D	20"	40'	Same as B.
E	20"	10'	Dead weeds, whitetop, moderate sago (no seed).
F	26"	30'	Same as E.
G		20'	Same as E.
H	36"	30'	Whitetop, moderate density. Light sago (no seed).
I	37"	50'	Same as H.
J	37½"	50'	Same as H. Sago has light seed, some plants are flowering and in bud stage. Whitetop becoming thinner.
K	37½"	50'	Same as J.
L	39"	50'	Same as J with trace of softstem.
M	40"	50'	Whitetop and softstem both sparce. Sago in moderate density (no seed).
N		30'	Same as M.
O	39"	20'	Open water. Sago in moderate density (No seed).
P		--	Sago increases in density then runs light for a while, then turns dense again.
Q		100'	Thin sago
R		200'	solid asgo
S		100'	Sago** with some hardstem
T		50'	Sago**
U		75'	Sago*, white-top
V		400'	White-top (very light)
W		50'	River and prairie bul rush
X		20'	River bulrush

Marsh Transects

Des Lacs Refuge

August 9, 1963

Unit 8

Gauge reading 21 2.76

Transect 33518 (Bradley & Capel)

Start at steel post on Dam 7.

50' borrow pit 6 feet deep barren
Open water to Island..... 43" deep in middle barren
 of this area, 24" deep out from island
55' island, 15' river bulrush, bare, then 5' hardstem and river bulrush h.
Open water area to south shore, water 12" or less. Sago 1 plant per
 square yard on north portion; increasing to 2 plants per square
 yard on south portion. No fruit in this area.

90' river bulrush.

30' river bulrush and hardstem mixed.

20' hardstem

 Old "Cattail" edge as defined in 1959 transect notes.

Transect 33519 (Hammond)

Start at steel post, west end of Dam 7.

Mud flats plus tip of small bay at start.

Shallow water, 6-12" deep or less to south shoreline.

 Water real cloudy, moderate Aphanizomenon and unid. algae.

 Sago present, 1-3 plants per sq. yard---no seed.

Emergents have spread from south shoreline (old, 1959 "cattail"
 edge, 15 to 50' wide or more; softstem, river bulrush, and
 trace of cattails. Softstem seedlings 3 inches tall form a
 solid carpet in places.

Transect 33518 (Capel & Bradley)

¹¹⁵
170' from post across borrow pit to first sago. Sago runs ³⁰ 20' when
it begins to change to hardstem, river br. and smartweed which ends
95' later ~~mixing~~ after 30' of dry land. Sago, Sagittaria,
river bulrush, hardstem, and smartweed run for 90'. Dry land again
with river and hardstem bulrushes for 75'. There is 80' of river
and hardstem bulrush with smartweed. Then 150' of Sagittaria,
smartweed, river and hardstem bulrush. The water depth throughout
averaged about 4" except for the borrow pit which had about 24".

Note: above-mentioned hardstem may be softstem
 in many instances.

UNIT 8

Transect 33517 (Bradley & Capel) gauge reading 2.76

Start at steel post East end of Dam7.

170' open water over borrow pit.
20' sago*
25' Smartweed, sedge, river br., sago
25' Sagittaria, Carex, river br., smartweed
105' Hardstem, River, softstem (dry land)
40' smartweed, river br., hardstem
25' River br., softstem, smartweed, sago
85' Sago***
65' Smartweed, river br., sago
35' River & softstem br., duckweed
130' Sagittaria, River & softstem br., (dry land)



Unit 2



Unit 3



Unit 4 from post 33526 on 8/19/63



Unit 6 from post 33523 on 8/19/63



North Transect Unit # 4



South Transect Unit # 1



Unit 4 from post 33528



Unit 6 from post 33522





Unit 7 from post 33520



Unit 7 transect 1



Unit 7 Transect 2



Unit 7 Transect 3



Unit 8 from post 33518 8/19/63



Unit 8 from post 33519 8/19/63

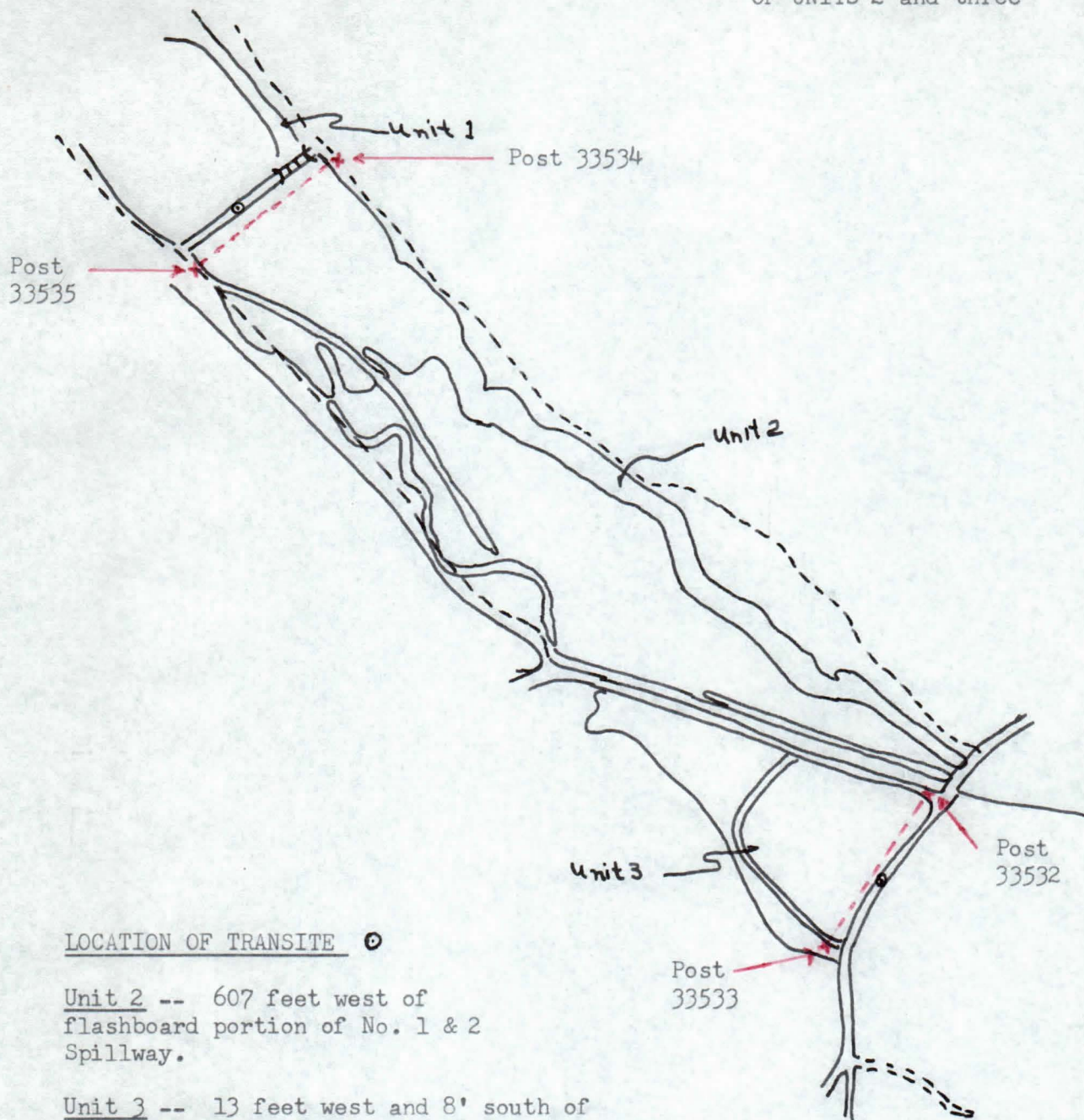


Unit 8 from post 33516



Unit 8 rom post 33517

TRANSECT LOCATIONS
OF UNITS 2 and three



LOCATION OF TRANSITE ○

Unit 2 -- 607 feet west of
flashboard portion of No. 1 & 2
Spillway.

Unit 3 -- 13 feet west and 8' south of
power pole which is immediately east
of emergency spillway and/or 40' from center
of E-W road and 660 feet from N-S road.

Transect locations of units 4 and 4a

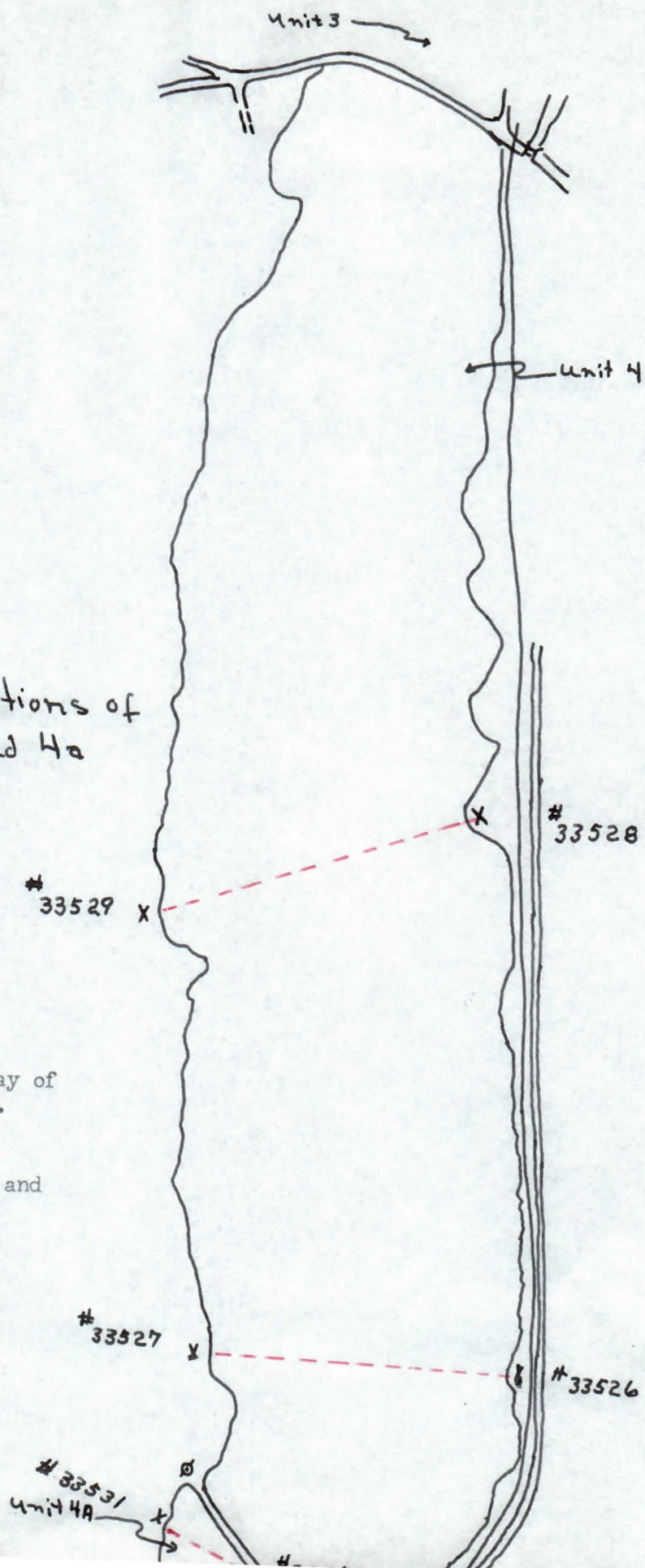
LOCATION OF TRANSIT

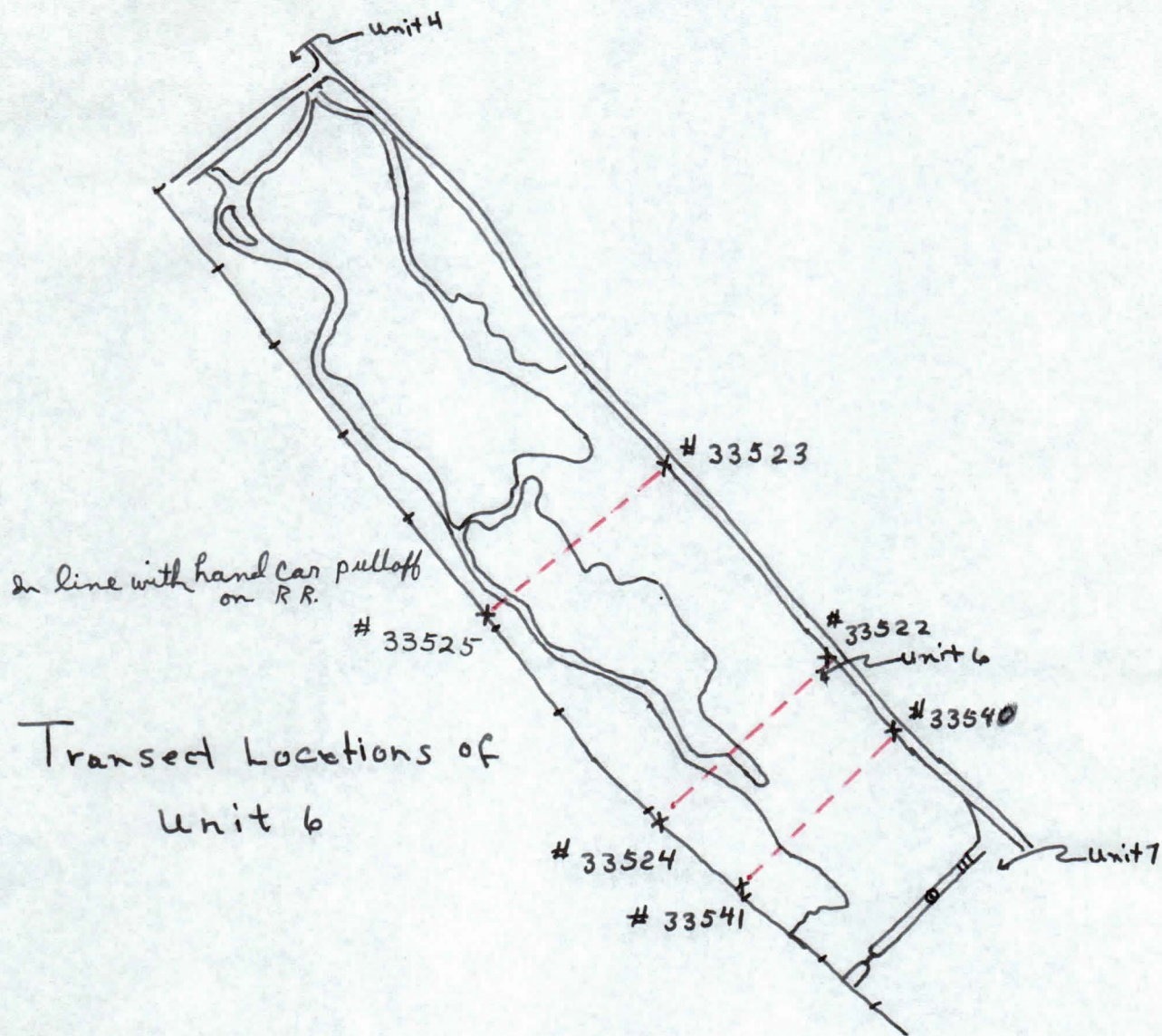
Unit 4

For both transects --
100 feet west of west bay of
control structure No. 4.

Unit 4a

At intersection of dike and
trail on west side.

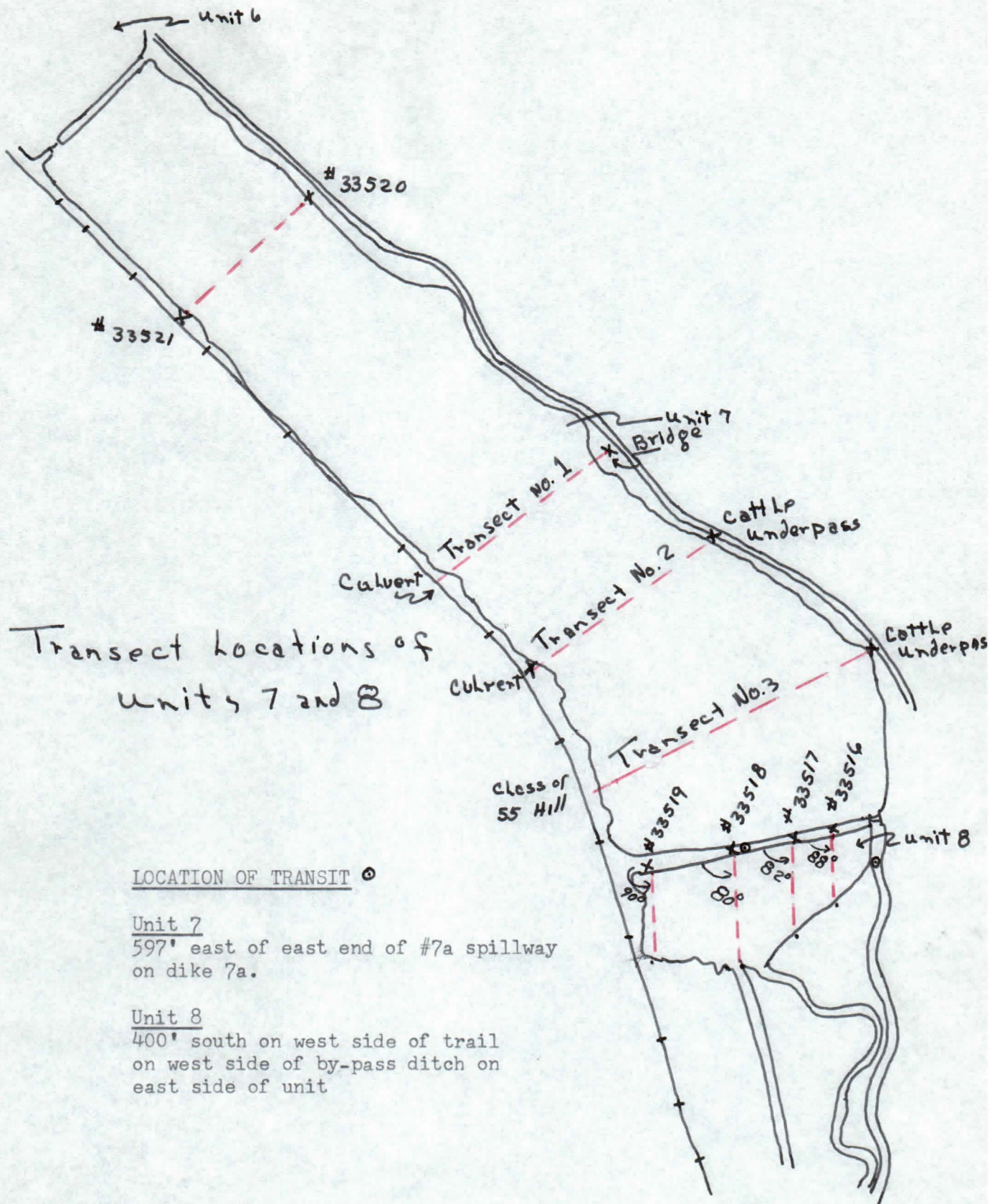




LOCATION OF TRANSIT ☉

Unit 6

200' west of west bay of control structure no. 6
for all three transects



AQUATIC TRANSECT

UNIT 1

Transect No. 1 Looking from post 33537 on the
west to post 33526 on the east.

Neg. 85-67

Gaugesreading _____

8/22/67

• NOV • 67



UNIVERSITY OF CALIFORNIA
LIBRARY
1000

AQUATIC TRANSECT

UNIT 1

Transect No. 1 West to East

9/2/65 66-49

Gage reading -- 11.36

SEP 65

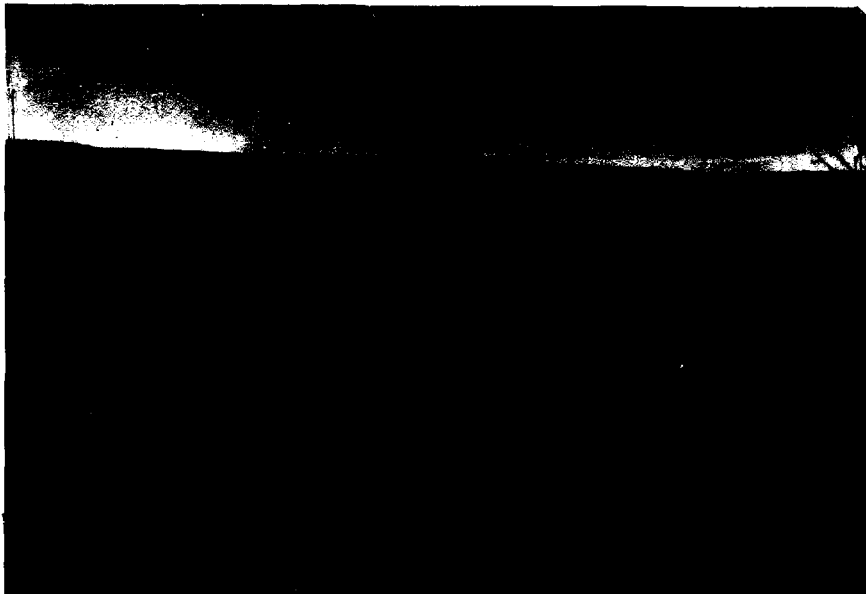


AQUATIC TRANSECT

UNIT 1

Transect No. 1 Looking from post 33537 on the
west to post 33526 on the east.
Photo from 1959 Student Asst.
Report.
8/30 Gage Reading---10.88

SEPT 1959



AQUATIC TRANSECT

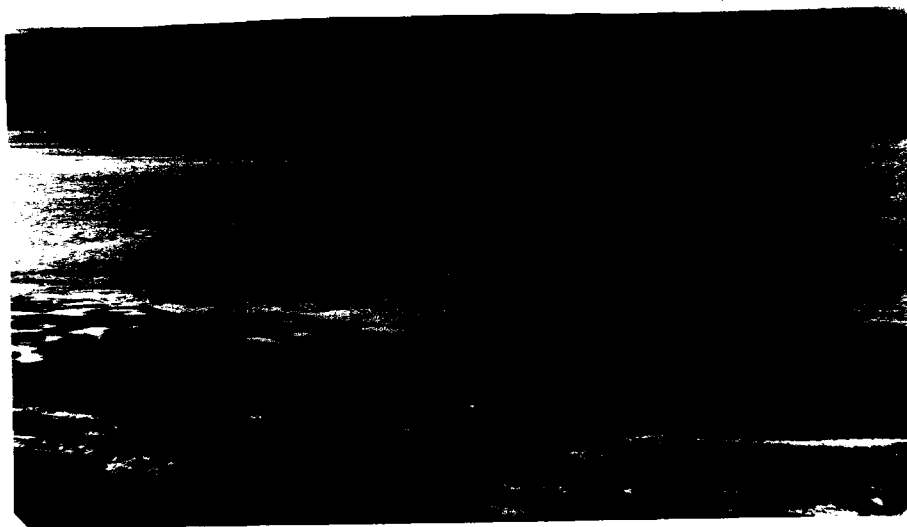
UNIT 1

Transect No. 1 View from east to west

8/22/67

Gauge Reading _____

NOV • 67



TRANSECT #1 - 1967
East to West

AQUATIC TRANSECT

UNIT 1

Transect No. 1 View from east to west

9/2/65

66-51

Gage Reading --- 11.36

SEP • 65



AQUATIC TRANSECT

UNIT 1

Transect No. 2 View west to east

8/22/67 Neg No. 85-67

Gauge Reading_____

NOV . 67



TRANSECT #2, 1967

AQUATIC TRANSECT

UNIT 1

Transect No. 2 View west to east
9/2/65 66-50
Gage Reading --- 11.36

SEP • 65



TRANSECT # 2 - 1965

UNIT 1

Transect No. 2 Looking from post 33539 on the
west to post 33538 on the east.
Neg. No. 60-35
8/19/60 Gage Reading---13.46



AQUATIC TRANSECT

UNIT 1

Transect No. 2 View from west to east
Neg. No. 59-65
8/30/59 Gage Reading---10.88



AUG 1959

TRANSECT # 2 - 1959

Photo did not turn out

Neg. was blank

AQUATIC TRANSECT

UNIT 2

Transect No. 1 View from West to East

9/2/65

66-48

Gage Reading --- 8.06

1 - 1965

• SEP • 65



AQUATIC TRANSECT

UNIT 2

Transect No. 1 View from west to east
Neg. No. 62-41

8/20/61 Gage Reading---5.00



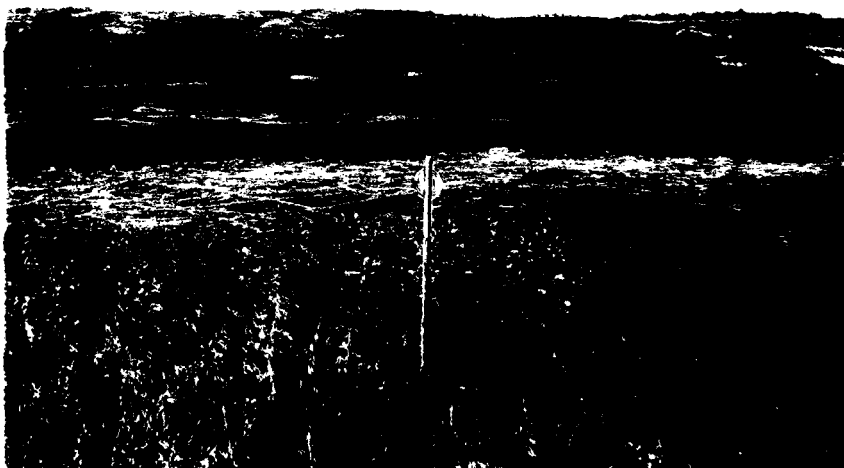
AQUATIC TRANSECT

UNIT 2

Transect No. 1 Looking from post 33535 on the
west to post 33534 on the east.
Neg. No. 60-36

8/19/60 Gage Reading---7.94

12



AQUATIC TRANSECT

UNIT 2

Transect No. 1 Looking from post 33535 on the west
to post 33534 on the east.

Neg. No. 59-63

8/30/59 Gage Reading---7.36

1 - 1959

AUG 1959



Photo did not turn out
Neg. was blank

AQUATIC TRANSECT

UNIT 3

Transect No. 1

View from west side looking
east toward Welsch place.

9/2/65

66-47

Gage Reading-- 8.26

SEP . 65



AQUATIC TRANSECT

UNIT 3

Transect No. 1 From west looking east to
Welsch Place.
Neg. No. 62-42
8/20/61 Gage Reading---Dry



AQUATIC TRANSECT

UNIT 3

Transect No. 1 Looking from post 33533 on the west
to post 33532 on the east.

Neg. No. 60-34

8/19/60 Gage Reading---8.20



AQUATIC TRANSECT

UNIT 3

Transect No. 1 Looking from post 33533 on the west
to post 33532 on the east.

Neg. No. 60-34

8/30/59 Gage Reading---7.64

AUG 1959



AQUATIC TRANSECT

UNIT 4

Transect No. 1

From stake no. 33526 on the
east to stake 33527 on the
west side. 7/28/67

Neg. No. 16 85-67 R4

Gauge Reading _____



UNIT 4

Transect No. 1

View from East to west.

9/2/65

66-45

Gage Reading - - 8.22

SEP • 65



AQUATIC TRANSECT

UNIT 4

Transect No. 2

View from east to west.

9/2/65

66-46

Gage Reading -- 8.22

SEP • 65



AQUATIC TRANSECT

UNIT 4

Transect No. 2 Looking from post 33528 on the
east to post 33529 on the west.
8/19/60 Gage Reading---8.00



TRANSECT # 2 - 1960

AQUATIC TRANSECT

UNIT 4

Transect No. 2 Looking from post 33528 on the
east to post 33529 on the west.
Neg. No. 59-27
8/30/59 Gage Reading---7.48



AQUATIC TRANSECT

UNIT 4

Transect No. 2

From stake 33528 on the
east to stake 33529 on
the west side. 7/28/67

Neg. No. 17 85-67 R4

Gauge Reading _____



UNIT 1A

AQUATIC TRANSECT

UNIT 4a

Transect 1 View from west side looking
toward the old spillway

8/22/67 Neg. 85-67

Gauge reading _____

NOV • 67



AQUATIC TRANSECT

UNIT 4A

Transect No. 1

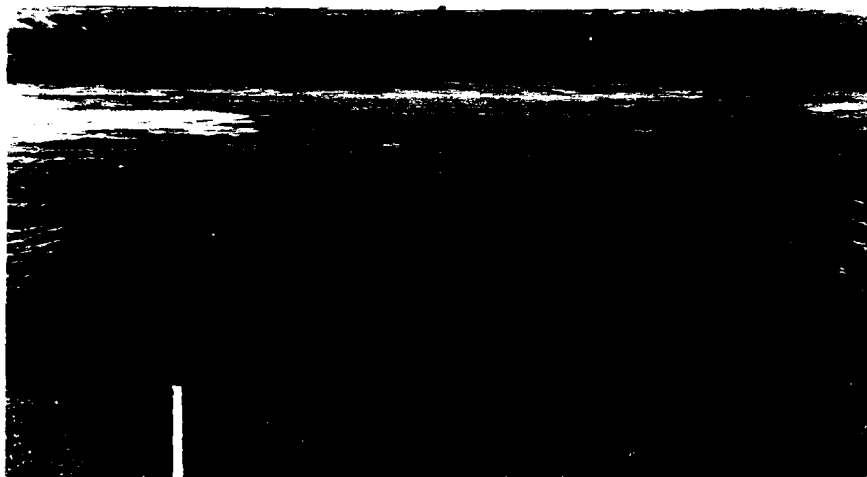
View from west side looking
toward the old spillway.

9/2/65

66-44

Gage Reading--- 8.22?

SEP • 65



UNIT 6

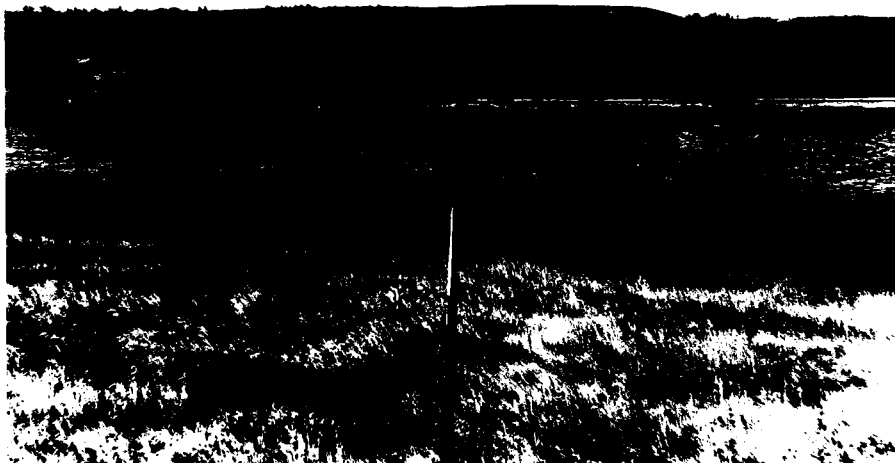
Transect No. 1

From stake 33540 on the east
to stake 33541 on the west.
7/28/67

Neg. No. 13 85-67 R4

Gauge Reading _____

o. 1 - 1967



AQUATIC TRANSECT

UNIT 6

Transect No. 1 From stake 3354 on the east to
stake 33540 on the west.

9/2/65

66-41

Gage Reading -- 6.72

SEP • 65



AQUATIC TRANSECT

UNIT 6

Transect No. 1 From Stake 3354 on the east
to stake 33540 on the west.

Neg. No. 62-51

8/20/61 Gage Reading---Dry



~~~~~

AQUATIC TRANSECT

UNIT 6

Transect No. 1 Looking from post 33540 on the east  
to post 33541 on the west.  
Neg. No. 60-45  
8/19/60---4.62 Gage Reading

11-1960

1



~~~~~

AQUATIC TRANSECT

UNIT 6

Transect No. 2

From stake ~~34~~ 3352~~2~~ on the
east side to stake 33524
on the west side. 7/28/67

Neg. No. 14 85-67 R4

Gauge Reading _____



AQUATIC TRANSECT

UNIT 6

Transect No. 2

From Stake 34000 on the east
to stake 33522 on the west.

9/2/65

66-42

Gage Reading -- 6.72

SEP • 65

TRANSECT # 2 - 1965



AQUATIC TRANSECT

UNIT 6

Transect No. 2 From stake 34000 on the east
 to stake 33522 on the west.
Neg. No. 62-52
8/20/61 Gage Reading---Dry



AQUATIC TRANSECT

UNIT 6

Transect No. 2 Looking from post 33522 on the
 east to post 33524 on the west.
 Neg. No. 60-44

8/19/60 Gage Reading---4.62



TRANSECT # 2 - 1960

AQUATIC TRANSECT

UNIT 6

Transect No. 2 Looking from post 33522 on the
east to post 33524 on the west.
From 1959 Student Asst. Report
8/30/69 Gage Reading---4.70



AQUATIC TRANSECT

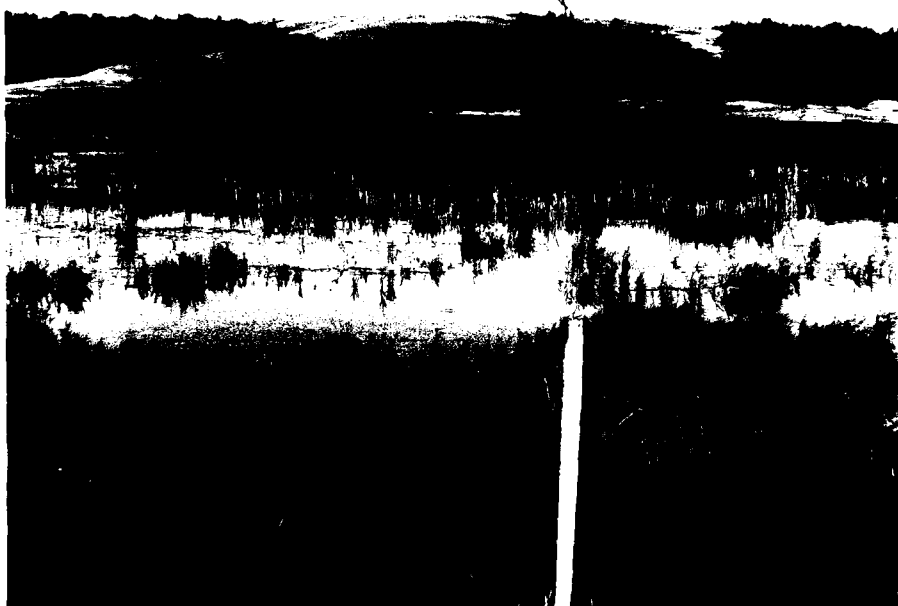
UNIT 6

Transect No. 3

From stake 33523 on the
east to stake 33525 on the
west. 7/28/67

Neg. No. 15 85-67 R4

Gauge Reading_____



TRANSECT #3 - 1967

AQUATIC TRANSECT

UNIT 6

Transect No. 3

From stake 33523 on the east
to stake 33525 on the west

9/2/65

66-43

Gage Reading--6.72

SEP • 65



TRANSECT # 3 - 1965

AQUATIC TRANSECT

UNIT 6

Transect No. 3 From stake 33523 on the east to
stake 33525 on the west.

Reg no. 62-53

8/20/65 Gage Reading---Dry



TRANSECT #3 - 1961

AQUATIC TRANSECT

UNIT 6

Transect No. 3 Looking from post 33523 on the
east to post 33525 on the west.
Photo from Student Asst. Report
of 1959.

8/30/59 Gage Reading---4.70



TRANSECT # 3 - 1959

AQUATIC TRANSECT

UNIT 6

Transect No. 3 Looking from post 33523 on the
east to post 33525 on the west.
neg no. 60-40
8/19/60 Gage Reading---4.62



TRANSECT # 3 - 1960

UNIT 7

AQUATIC TRANSECT

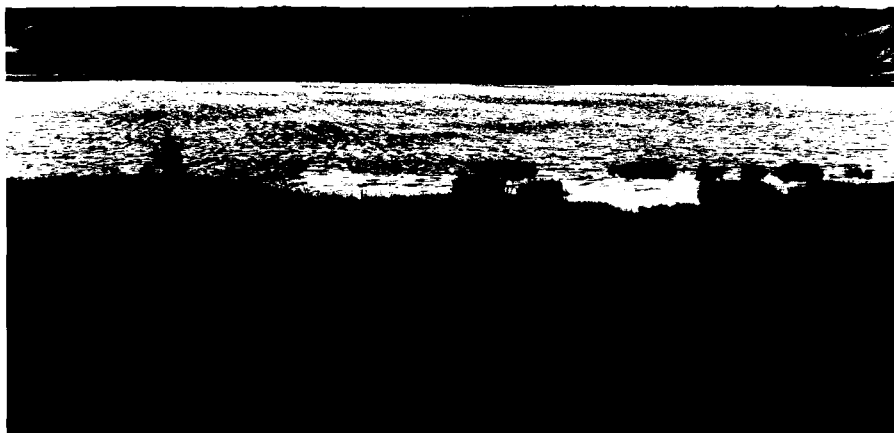
UNIT 7

Transect No. 1 From Cattle Pass on east side
to Hill 55 on west side.

7/28/67

Neg. no. 8 85-67 R4

Gauge Reading_____



AQUATIC TRANSECT

UNIT 7

Transect No. 1 From Cattle Pass on east to
Hill 55 on west side.

9/2/65 66-37

Gage Reading -- 3.36

SEP • 65



AQUATIC TRANSECT

UNIT 7

Transect No. 1 From Cattle Pass on east to
Hill 55 on the west side.

Neg. No. 60-57

8/19/60 Gage Reading---2.60



AQUATIC TRANSECT

UNIT 7

Transect No. 2

Cattle pass on east side
to culvert on the west.
7/28/67

Neg. No 10 85-67 R4

Gauge Reading _____

TRANSECT #2 - 1967



AQUATIC TRANSECT

UNIT 7

Transect No. 2 Cattle pass on east to
 culvert on the west.

9/2/65

66-38

Gage Reading -- 3.36

• SEP • 65



UNIT 7

Transect No. 3

From Bridge on the east
side to a culvert on the
west. 7/28/67

Neg. No. 11 85-67 R4

Gauge Reading _____



TRANSECT #3 - 1967

AQUATIC TRANSECT

UNIT 7

Transect No. 3

From Bridge on the east side
to a culvert on the west.

9/2/65

66-39

Gage Reading--5.36

SEP . 65



TRANSECT # 3 - 1965

AQUATIC TRANSECT

UNIT 7

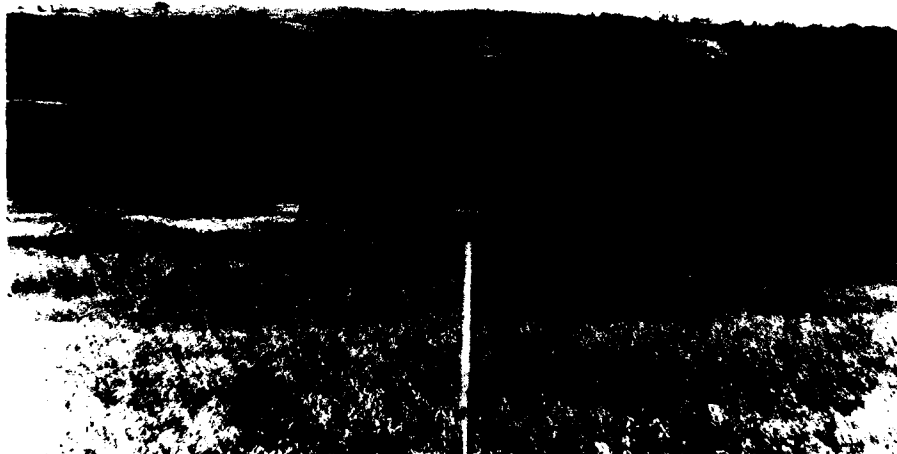
Transect No. 4

From Stake 33521 on the
east side to Stake 33520
on the west side. 7/28/67

Neg. No. 12 85-67 R4

Gauge Reading _____

AUG . 67 .



TRANSECT # 4 - 1967

AQUATIC TRANSECT

UNIT 7

Transect No. 4 From stake 33521 on the east
 to stake 33520 on the west
 9/2/65 66-40
 Gage Reading --- 3.36

SEP . 65



TRANSECT # 4 - 1965

AQUATIC TRANSECT

UNIT 7

Transect No. 4 From stake 33521 on the east
to stake 33520 on the west.
From 1959 Student Asst. Report.
neg no. 59-92
8/30/59 Gage Reading---1.78



TRANSECT # 4 - 1959

AQUATIC TRANSECT

UNIT 8

TRANSECT NO. 1 From west end of dike
(post No. 33519) looking
towards the south. 7/28/67

Neg. ref. Neg. #4 -85-67
R4

Gauge Reading _____



AQUATIC TRANSECT

UNIT 8

Transect No. 1

From west end of dike looking
towards the south. 9/2/65

66-33

Gage Reading--5.02

SEP • 65

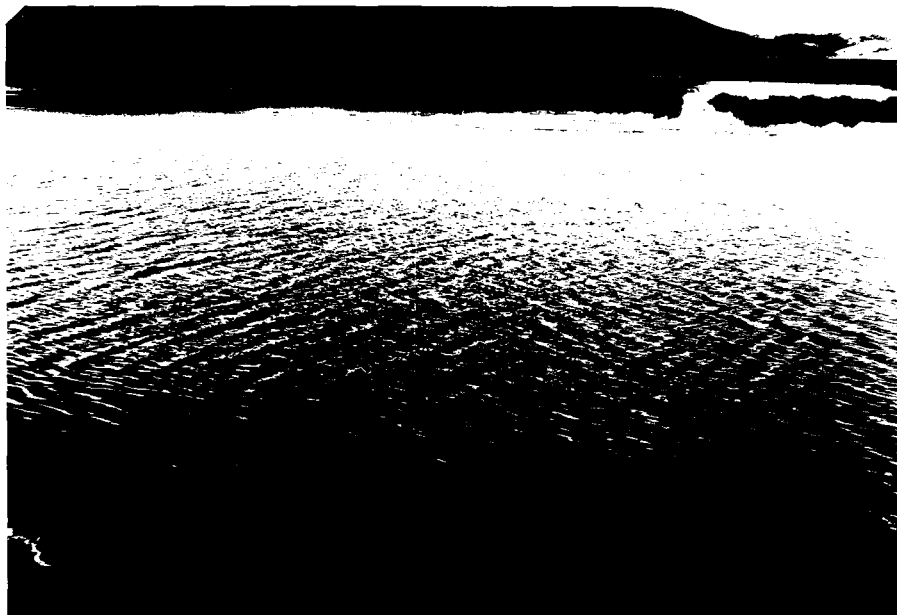


UNIT 8

From dike 7 (post no. 33518) looking
south. 7/28/67

Neg. Ref. Neg #5-85-67 R4

Gauge Reading _____



TRANSECT NO. 2 1967

AQUATIC TRANSECT

UNIT 8

Transect No. 2 From dike 7 looking south

9/2/65

66-34

Gage Reading -- 5.02

• SEP • 65



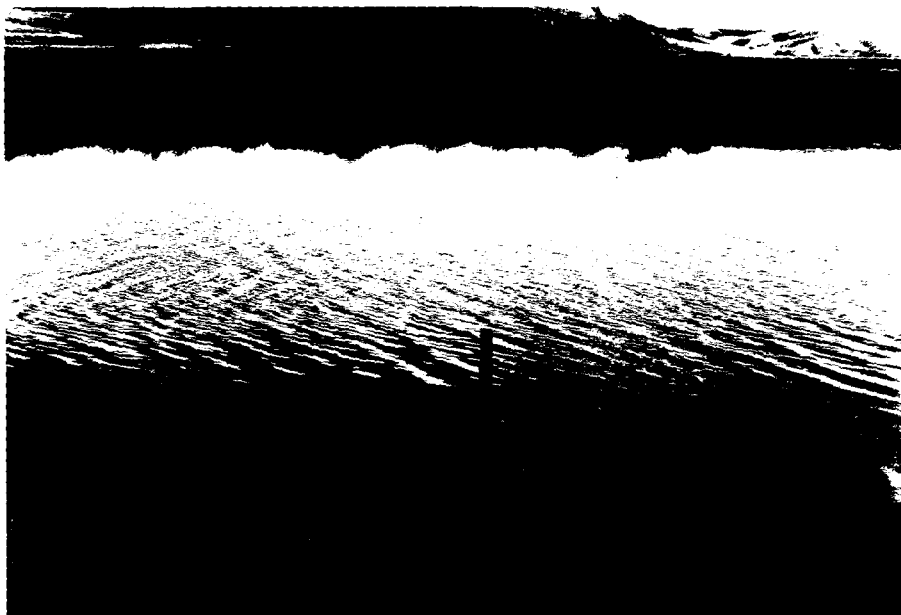
UNIT 8

Transect No. 3

From dike 7 (post
no. 33517) looking
south. 7/28/67

Neg. No. 6 85-67 R4

Gauge Reading _____



AQUATIC TRANSECT

UNIT 8

Transect No. 3

Dike 7 looking south

9/2/65

66-35

Gage Reading -- 5.02

• SEP • 65



UNIT 8

Transect No. 4 From east end of dike 7
(post no. 33516) looking
south. 7/28/67

Neg. No. 7 85-67 R4

Gauge Reading _____



UNIT 8

Transect No. 4 From east end of dike 7 looking
towards the south.

9/3/65

66-36

Gage Reading---5.02

SEP . 65



AQUATIC TRANSECT

UNIT 8

Transect No. 4 From east end of dike 7 looking
towards the south.

8/30/59 Gage Reading---4.16

