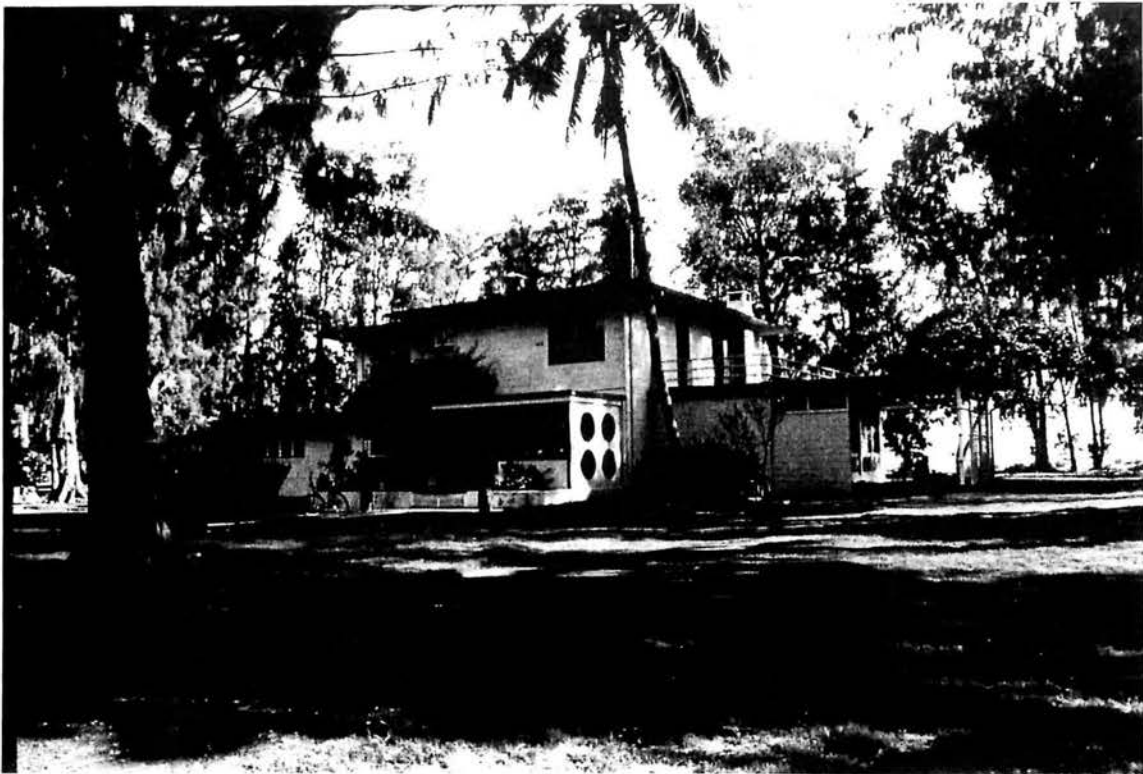

MIDWAY ATOLL National Wildlife Refuge Historic Properties Treatment



ANNUAL REPORT: 1996

United States Department of the Interior
Fish and Wildlife Service
Pacific Region

Department of the Navy
Pacific Division
Naval Facilities Engineering Command

24 December 1996

MIDWAY ATOLL National Wildlife Refuge

Historic Properties Treatment

ANNUAL REPORT: 1996

Compiled by

Lou Ann Speulda



U.S. Fish and Wildlife Service, Region 1
Cultural Resources Team
c/o Tualatin River National Wildlife Refuge
20555 SW Gerda Lane
Sherwood, Oregon 97140



INTRODUCTION

The Base Realignment and Closure (BRAC) Act of 1990, P.L. 101-510, as amended, led to the closure of Midway's Naval Air Facility (NAF) on 1 October 1993 and transfer of the property to the U.S. Fish and Wildlife Service (Service) on 31 October 1996. The Service had established an overlay refuge in 1988 on Midway Atoll to manage the endangered Hawaiian monk seal, the threatened green sea turtle, and an amazing diversity of marine species and migratory seabirds and shorebirds.

Midway's pivotal role in U.S. military history is well documented. Structures associated with the June 1942 Battle of Midway were listed as a National Historic Landmark (NHL) in 1986. As part of their base closure responsibilities under Section 106 of the National Historic Preservation Act (NHPA), the Navy contracted for archaeological and architectural surveys to identify all historic resources on Sand and Eastern islands. Upon the completion of these studies 78 buildings, structures, and objects were evaluated and determined to be eligible to the National Register of Historic Places (NRHP). These 78 properties include the NHL properties.

The transition from a naval air facility to a wildlife refuge requires a reduction in personnel and operation facilities. A Station Plan prepared by the Service in 1994 outlined the refuge's objectives, staffing, facilities, infrastructure, and funding requirements for operation (McDermond et al. 1994). The Service maintains a small staff on Midway Atoll NWR, and even with the assistance of a cooperator, cannot maintain or reuse all of the NAF Midway facilities.

Special attention was given to the 78 historic properties. Discussions among the Pacific Division, Naval Facilities Engineering Command (PACNAVFACENGCOM), the Service, the Advisory Council on Historic Preservation (Council), the National Park Service (NPS), the State Historic Preservation Officer of the State of Hawaii (SHPO), the Sixth Defense Battalion, the U.S. Marine Corps and Defenders of Midway Islands Reunion Association, and the International Midway Memorial Foundation led to a Programmatic Agreement (PA) for the treatment of these resources (1996).

As required by the PA, in Stipulation IV, the Annual Report is intended to provide the Council opportunity to comment on the base closure process.

The Service, with the cooperation and assistance from PACNAVFACENGCOM, shall prepare an annual report with an assessment of the condition of properties listed in Appendix B and include a 3 x 5 in. black-and-white photograph of each property not demolished. PACNAVFACENGCOM shall assist the Service by providing the required assessment and photographs for properties not transferred to

the Service. The report shall be submitted to the Council by 30 June of each calendar year until final departure by PACNAVFACENGCOM. If the Service is unable to submit the report on this date, it shall notify all parties to this agreement in writing of this delay and inform the parties of the expected completion date.

This, the first annual report, was delayed because the transfer and subsequent treatment of the historic properties did not proceed as rapidly as planned. The Service notified the Council by letter in October 1996. At the same time, the Service requested the assistance of PACNAVFACENGCOM for completing the report. The scheduled date of completion and delivery to the Council was identified as 30 December 1996.

The following report includes:

- a brief description of the treatment plans and how they were assigned;
- the status report provided by PACNAVFACENGCOM;
- a review of work still to be accomplished;
- a summary of the Service's activities; and
- two attachments.

Attachment 1 presents a tabular listing of the 78 historic properties with their assigned treatments. Attachment 2 contains the photographs of all historic properties not demolished on Midway as of 30 September 1996.

TREATMENT PLANS FOR HISTORIC PROPERTIES

As listed in Appendix B of the PA, 78 historic properties, were given a significance ranking of either Primary (Treatment Category I) or Secondary (Treatment Category II). The significance ranking was related to qualities or attributes associated with the property, such as, date of construction, type of architecture or construction, involvement in the Battle of Midway, and contribution to the overall setting.

The PA defines six preservation treatment plans: reuse, secure, leave as-is, fill, demolish, or relocate (Attachment 1). The decision for assigning a treatment plan for each historic property was based on many factors, including historic importance, interpretive value, the overall setting, association with key themes, structural integrity or condition, and recommendations from interest groups, specialists, and the Council. Because the level of preservation varied among the resources all of the buildings and structures were documented to Historic American Building Survey (HABS) or Historic American Engineering Record (HAER) standards.

The historic properties and treatment plan for all resources are identified in Appendices C-H of the PA. Twenty-three buildings and structures will be **reused** by the Service or their cooperator (Appendix C). The buildings chosen for reuse include many of the core buildings designed by Albert Kahn during the Pre-World War II military build-up on Sand

Island. Buildings such as the Officer's housing, the theater, barracks, a torpedo shop, and garage will be maintained following the *Secretary of the Interior's Standards for Rehabilitation*. Thirteen buildings and structures will be **secured** by PACNAVFACENGCOM prior to June 1997 (Appendix D). The securing process is especially well-suited for the bomb-proof buildings constructed during World War II such as the command centers, radar buildings, and an underground structure. The Pacific Cable Station buildings offer more of a challenge for securing procedures. Once the buildings are sealed and wildlife hazards corrected, they will be allowed to deteriorate in-place at a natural rate. Twenty resources are in the **leave as-is** category, most of these resources are stable, require little maintenance, and are not appropriate for reuse (Appendix E). Examples of the leave as-is treatment are the Eastern Island runways, revetments, gun positions, battery D, the cemetery, and memorial guns. Four structures including two ARMCO huts and two pillboxes will be left in place and **filled** with sand (Appendix F). Filling these structures will lessen their potential for becoming wildlife hazards. Fifteen properties planned for **demolition** were of secondary historic importance, were in poor condition, or were redundant to other resources being maintained (Appendix G). Additionally, three artifacts (a torpedo and bomb, a submarine net, and a portion of a pillbox) may be **relocated** if necessary (Appendix H).

HISTORIC PROPERTIES TREATMENT BY PACNAVFACENGCOM IN 1996

In a letter report transmitted to the Service on 15 November 1996, PACNAVFACENGCOM supplied the status of properties listed in the PA, according to their treatment level as defined in Appendices C through G (refer to Attachment 1). The current status is as follows:

Appendix C - "Use" - all buildings listed in this appendix are currently being used.

Appendix D - "Secure" - no action taken on any buildings yet. PACNAVFACENGCOM is currently developing a securing plan to be finalized in consultation with the Service. Securing should start around the first of the year and be completed prior to June 30, 1997.

Appendix E - "Leave as-is" - all properties in this appendix have been left as-is.

Appendix F - "Filling" - S-7 Metal Pillbox on Sand Island has been filled and no action has been taken with the other three properties in this treatment category. Completion of work will occur in the same time frame as Appendix D.

Appendix G - The 15 buildings listed in this appendix have been demolished.

No report was provided on Appendix H resources. However, no change in status has occurred to these artifacts.

TASKS TO BE ACCOMPLISHED BY PACNAVFACENGCOM IN 1997

Many tasks remain to be completed in 1997, including securing the buildings listed in Appendix D, filling the structures identified in Appendix F, and fulfilling stipulations G, H, and I of the PA.

Reuse. Buildings listed in Appendix C are planned for reuse by the Service. However, only one of the Officer's Quarters (424) has been transferred to the Service. The theater/office building (259) is held in common by PACNAVFACENGCOM and the Service. The remaining 21 buildings continue to be used by PACNAVFACENGCOM.

Securing. Securing buildings and structures will require a plan for each of the 13 resources. The method of securing is an action that will necessitate consultation between PACNAVFACENGCOM and the Service. Securing in most cases is required as a safety precaution for wildlife and humans. Several massive concrete structures relating to World War II will require sealing of all windows and entrances so that birds and visitors will not have access to the interiors. Other buildings, such as the Albert Kahn designed buildings and Cable Station buildings will require a more complex process to cover windows and doorways without diminishing their historic exterior qualities. The long-range plan for the secured buildings and structures is for their slow natural deterioration, but with a chance for rehabilitation in the future.

Fill. The remaining structures to be filled including the two ARMCO huts (S7124 and S7125) may require consultation with National Park Service staff regarding the most appropriate methods. PACNAVFACENGCOM also will consult with the Service regarding the proposed method of filling.

Leave As-Is. All properties to be left as-is, will not be altered.

Relocation. The final location of the artifacts should be assessed and moved to either Sand or Eastern island prior to PACNAVFACENGCOM completing their preservation efforts.

Stipulation G. PACNAVFACENGCOM shall ensure that the HABS/HAER documentation . . . shall be submitted to and accepted by NPS before proceeding with proposed disposition. Copies of approved documentation shall be provided to the Service and Hawaii SHPO.

All historic properties were recorded to HABS/HAER standards and a report completed and accepted by the National Park Service in 1996. This report, HABS No. UM-1, is in final production and should be distributed to the Service and Hawaii SHPO early in 1997.

Stipulation H. PACNAVFACENGCOM shall ensure that all public works department records relating to the operation of NAF Midway are transferred to the Service.

Stipulation I. PACNAVFACENGCOM shall ensure that all historic documents and historical files collected by the Navy or its subcontractors relating to Midway Atoll are included in the property transfer to the Service.

SUMMARY OF THE SERVICE'S ACTIVITIES IN 1996

Stipulation K. of the PA requires the Service to "prepare a long-term Historic Preservation Plan (HPP) for submission to the NPS, SHPO, and the Council within one year of PACNAVFACENGCOM completing all work."

The Midway Historic Preservation Plan is in draft and will be used for the long-range management of the historic properties that are **reused, secured, filled, left as-is, or relocated**. As noted, the Navy has completed the demolition of all fifteen properties listed in Appendix G. Therefore, only the remaining 63 resources will be addressed by the HPP.

As currently conceived the HPP consists of seven chapters. An introduction is followed by Chapter 2, a review of Midway's history, themes and property types, and a discussion of the NHL properties. Chapter 3 identifies the 63 historic properties defined in the PA and discusses their treatment and long-term management responsibilities. Chapter 4 outlines the methods for monitoring the properties and providing the Council, NPS, and SHPO the opportunity to consult with the Service. Chapter 5 provides guidance on how the HPP and NHPA correspond and describes the circumstances for following Section 106 for non-standard treatments. Chapter 6 identifies how the historic properties will be treated under special conditions such as storms and changes in partnerships. Chapter 7 summarizes the HPP, outlines steps to achieve a consistent monitoring program, and presents a plan for integrating the HPP with other Refuge management guidance.

Midway Phoenix Corporation has entered into a cooperative agreement with the Service. Historic preservation requirements are identified in the cooperative agreement between the Service and Midway Phoenix Corporation. Small tour groups arrived on Midway Atoll beginning in August. The Service has hired an Outdoor Recreation Planner to coordinate the activities of visitors with other refuge operations.

ATTACHMENT 1

Historic Properties Treatment.

Table 1. Treatment Level for Historic Properties defined in Programmatic Agreement.

Bldg. No.	Common Name	Treatment Level	P.A. Appendix
S2115	Seaplane Ramp	Reuse by FWS	C
361	Electrical Switch Station (pesticide storage bld)	Reuse by FWS	C
259	Recreation Facilities, Theater, Offices, and Shops	Reuse by FWS	C
578, 579	Barracks	Reuse by Cooperator	C
353	Carpentry shop	Reuse by cooperator or FWS	C
356	General Squadron Storehouse (transportation building)	Reuse by cooperator or FWS	C
357	Torpedo Shop (Machine shop)	Reuse by cooperator	C
414, 415, 416, 417, 418, 419, 421, 422, 423, 424	OIC, Senior Officer's Quarters	Reuse by cooperator Residential housing for officers, Albert Kahn design.	C
349	Commissary and Cold Storage	Reuse by cooperator	C
S3126, S3127	Water reservoirs	Reuse by cooperator	C
393	Public Works Storehouse	Reuse by cooperator	C
151	Seaplane Hangar	Reuse by cooperator	C
342	Paint and Oil Storehouse	Secure with partial demo. of wooden shed	D
363	Torpedo Shop w/parachute tower	Secure	D
144	Diesel power plant and salt water pumping station at submarine base	Secure	D
354	Power Plant and Command Center	Secure Dec. 7, 1941 raid and Lt. Cannon.	D
521	Command Post	Secure	D
628, 619, 623, 643	Cable Station bldg Complex	Secure	D
S6194*	ARMCO hut	Secure	D
631, 5187	Radar Building and Tower base	Secure	D
S956	Underground Shelter	Secure	D

Bldg. No.	Common Name	Treatment Level	P.A. Appendix
626	Cable Station bldg.	Leave as-is	E
S2123	Midway Memorial Plaque	Leave as-is	E
S2409	Two 5-inch Naval guns in Midway Memorial	Leave as-is	E
S5247	Brackish water reservoirs	Leave as-is	E
S9132, S2117	Seaplane ramps	Leave as-is	E
S-1*	3-inch Naval gun battery: Bauer Road	Leave as-is	E
S-2*	Battery D	Leave as-is	E
S-3*	Pillbox, near S7125	Leave as-is	E
S-4	Cemetery: Bauer Road	Leave as-is	E
S-5	Three Japanese Memorials	Leave as-is	E
S-6*	Pillbox, south shore.	Leave as-is	E
6-24, 12-30, 3-21	Eastern Island Runways	Leave as-is	E
E-1	3-inch anti-aircraft gun, southeast of pier.	Leave as-is	E
E-2	Underground Bunker, east shore, east of runway.	Leave as-is	E
E-6	Revetments	Leave as-is	E
E-7, E-8	Possible gun positions, south shore.	Leave as-is	E
S-7	Metal Pillboxes, north side on inner harbor	Fill	F
S7124*, S7125*	ARMCO huts	Fill	F
E-3	Metal pillbox, Eastern Island	Fill	F
335,336	Barracks	Demolished-1996	G
343	Motor Pool and garage	Demolished-1996	G
365	Laundry	Demolished-1994	G
595	Blackout Hangar	Demolished-1996	G
189	Officer's Head for Submarine basin	Demolished-1996	G

Bldg. No.	Common Name	Treatment Level	P.A. Appendix
348	N.O.B. Armory	Demolished-1996	G
586	General Storehouse, Air Terminal Building	Demolished-1996	G
594, 596	Airfield storage buildings	Demolished-1996	G
S5182	Brackish water pumping station	Demolished-1996	G
S7113*, S7119*, S7121*	ARMCO Huts	Demolished-1996	G
174	Quonset Hut at Submarine Basin	Demolished-1996	G
S-8	Torpedo & Bomb	Relocate—if needed	H
E-5	Submarine net and Floaters	Relocate—to Sand Island	H
E-4	Metal Pillbox	Relocate-if needed Important artifact of WWII, unburied example	H

* NHL Property.

ATTACHMENT 2

Historic Property Photographs

Photo Credits:

- 3 x 5" photographs supplied by U.S. Fish and Wildlife Service.
- Copies of 8 x 10" photographs supplied by PACNAVFACENGCOM.

List of Figures

- 1 Sand Island map, updated from 1994 PACNAVFACENGCOM report.
- 2 Eastern Island map, updated from 1994 PACNAVFACENGCOM report.

Reuse Category

- 3 S2115 Seaplane Ramp (Service, 1996).
- 4 361 Electrical Switch Station (Service, 1996).
- 5 259 Theater wing (Service, 1996).
- 6 259 Recreation Facilities, Offices, Shops (Service, 1996).
- 7 259 Interior of Auditorium (PACNAVFACENGCOM, 1996).
- 8 578 Marine Barracks (Service, 1996).
- 9 579 Marine Barracks (Service, 1996).
- 10 353 Carpentry Shop (Service, 1996).
- 11 356 General Squadron Storehouse (PACNAVFACENGCOM, 1996).
- 12 356 Interior (PACNAVFACENGCOM, 1996).
- 13 357 Torpedo Shop (Service, 1996).
- 14 357 Interior, bomb attack marks on wall (PACNAVFACENGCOM, 1996).
- 15 414 OIC Quarters (PACNAVFACENGCOM, 1996).
- 16 414 OIC Quarters, interior (PACNAVFACENGCOM, 1996).
- 17 415 Officer's Quarters (Service, 1996).
- 18 416 Officer's Quarters (Service, 1996).
- 19 417 Officer's Quarters (Service, 1996).
- 20 418 Officer's Quarters (Service, 1996).
- 21 419 Officer's Quarters (Service, 1996).
- 22 421 Officer's Quarters (Service, 1996).
- 23 422 Officer's Quarters (Service, 1996).
- 24 423 Officer's Quarters (Service, 1996).
- 25 424 Officer's Quarters (Service, 1996).
- 26 349 Commissary and Cold Storage (PACNAVFACENGCOM, 1996).
- 27 S3126, S3127 Water Reservoirs (PACNAVFACENGCOM, 1996).
- 28 393 Public Works Storehouse (PACNAVFACENGCOM, 1996).

- 29 151 Seaplane Hangar (Service, 1996).
- 30 151 Seaplane Hangar (Service, 1996).

Secure Category

- 31 342 Paint and Oil Storehouse (PACNAVFACENGCOM, 1996).
- 32 363 Torpedo Shop with Parachute Tower (Service, 1996).
- 33 144 Diesel Power Plant and Salt Water Station (PACNAVFACENGCOM, 1996).
- 34 354 Power Plant and Command Center (PACNAVFACENGCOM, 1996).
- 35 521 Command Post (PACNAVFACENGCOM, 1996).
- 36 628 Supervisor's Quarters, Cable Station Building (PACNAVFACENGCOM, 1996).
- 37 619 Office, Cable Station Building (PACNAVFACENGCOM, 1996).
- 38 623 Staff Quarters, Cable Station Building (PACNAVFACENGCOM, 1996).
- 39 623 Staff Quarters, Cable Station Building (PACNAVFACENGCOM, 1996).
- 40 643 Mess Hall/Recreation, Cable Station Building (PACNAVFACENGCOM, 1996).
- 41 S6194 ARMCO Hut (PACNAVFACENGCOM, 1996).
- 42 631 Radar Building (PACNAVFACENGCOM, 1996).
- 43 S956 Underground Shelter (PACNAVFACENGCOM, 1996).

Leave As-Is Category

- 44 626 Servants Quarters, Cable Station Building (PACNAVFACENGCOM, 1996).
- 45 S2123 Midway Memorial Plaque (PACNAVFACENGCOM, 1996).
- 46 S2409 Two 5-inch Naval guns, Midway Memorial (PACNAVFACENGCOM, 1996).
- 47 S9132 Seaplane Ramp (PACNAVFACENGCOM, 1996).
- 48 S-1 3[5]-inch Naval Gun Battery, Bauer Road (PACNAVFACENGCOM, 1996).
- 49 S-2 Battery D (PACNAVFACENGCOM, 1996).
- 50 S-3 Pillbox (PACNAVFACENGCOM, 1996).
- 51 S-4 Cemetery, Bauer Road (PACNAVFACENGCOM, 1996).
- 52 S-5 Japanese Memorials (PACNAVFACENGCOM, 1996).
- 53 S-6 Pillbox (PACNAVFACENGCOM, 1996).
- 54 6-24 Eastern Island Runway (PACNAVFACENGCOM, 1996).
- 55 12-30 Eastern Island Runway (PACNAVFACENGCOM, 1996).
- 56 3-21 Eastern Island Runway (PACNAVFACENGCOM, 1996).

- 57 E-1 3-inch Anti-Aircraft Gun (PACNAVFACENGCOM, 1996).
- 58 E-2 Underground Bunker (PACNAVFACENGCOM, 1996).
- 59 E-6 Revetments (PACNAVFACENGCOM, 1996).
- 60 E-7 Possible Gun Position (PACNAVFACENGCOM, 1996).

Fill Category

- 61 S-7 Metal Pillbox (PACNAVFACENGCOM, 1996).
- 62 S7124 ARMCO Hut (PACNAVFACENGCOM, 1996).
- 63 E-3 Metal Pillbox (PACNAVFACENGCOM, 1996).

Demolish: No photographs

Relocate

- 64 S-8 Torpedo and Bomb (PACNAVFACENGCOM, 1996).
- 65 S-8 Torpedo and Bomb (PACNAVFACENGCOM, 1996).
- 66 E-5 Submarine Net and Floaters (PACNAVFACENGCOM, 1996).
- 67 E-4 Metal Pillbox (PACNAVFACENGCOM, 1996).

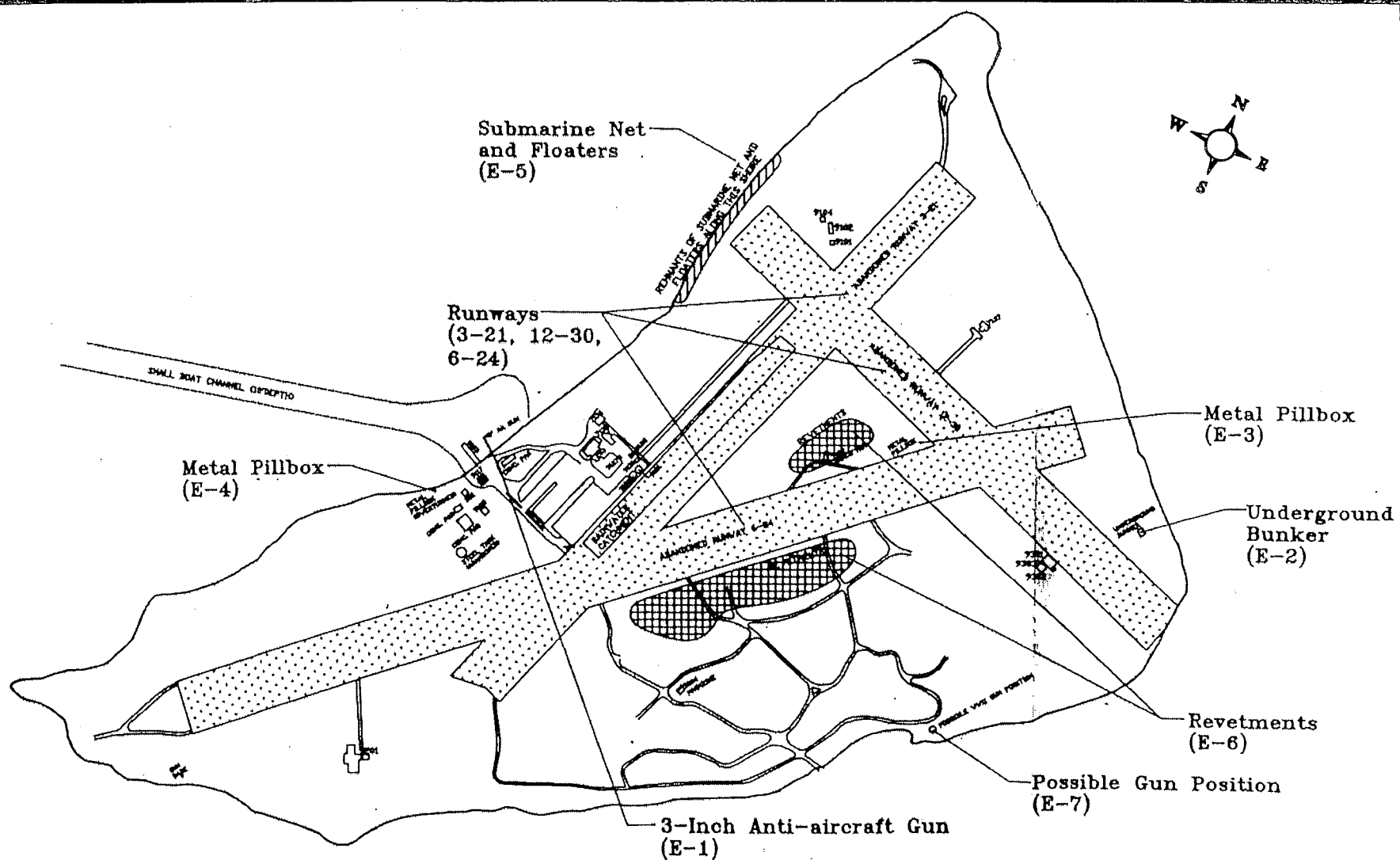


Figure 2. Eastern Island Map, updated from 1994 PACNAVFACENGCOM report.

MIDWAY ATOLL National Wildlife Refuge
Historic Properties Treatment

Annual Report: 1996

Reuse Category

- 3 S2115 Seaplane Ramp (Service, 1996).
- 4 361 Electrical Switch Station (Service, 1996).
- 5 259 Theater wing (Service, 1996).
- 6 259 Recreation Facilities, Offices, Shops (Service, 1996).
- 7 259 Interior of Auditorium (PACNAVFACENGCOM, 1996).
- 8 578 Marine Barracks (Service, 1996).
- 9 579 Marine Barracks (Service, 1996).
- 10 353 Carpentry Shop (Service, 1996).
- 11 356 General Squadron Storehouse (PACNAVFACENGCOM, 1996).
- 12 356 Interior (PACNAVFACENGCOM, 1996).
- 13 357 Torpedo Shop (Service, 1996).
- 14 357 Interior, bomb attack marks on wall (PACNAVFACENGCOM, 1996).
- 15 414 OIC Quarters (PACNAVFACENGCOM, 1996).
- 16 414 OIC Quarters, interior (PACNAVFACENGCOM, 1996).
- 17 415 Officer's Quarters (Service, 1996).
- 18 416 Officer's Quarters (Service, 1996).
- 19 417 Officer's Quarters (Service, 1996).
- 20 418 Officer's Quarters (Service, 1996).
- 21 419 Officer's Quarters (Service, 1996).
- 22 421 Officer's Quarters (Service, 1996).
- 23 422 Officer's Quarters (Service, 1996).
- 24 423 Officer's Quarters (Service, 1996).
- 25 424 Officer's Quarters (Service, 1996).
- 26 349 Commissary and Cold Storage (PACNAVFACENGCOM, 1996).
- 27 S3126, S3127 Water Reservoirs (PACNAVFACENGCOM, 1996).
- 28 393 Public Works Storehouse (PACNAVFACENGCOM, 1996).
- 29 151 Seaplane Hangar (Service, 1996).
- 30 151 Seaplane Hangar (Service, 1996).



Figure 3. Seaplane Ramp (Service, 1996).



Figure 4. 361 Electrical Switch Station (Service, 1996).



Figure 5. 259 Theater Wing (Service, 1996).



Figure 6. 259 Recreation Facilities, Offices, Shops (Service, 1996).



Figure 7. Interior of Auditorium
(PACNAVFACENGCOM, 1996).



Figure 8. 578 Marine Barracks (Service, 1996).



Figure 9. 579 Marine Barracks (Service, 1996).



Figure 10. 353 Carpentry Shop (Service, 1996).



Figure 11. 356 General Squadron Storehouse
(PACNAVFACENGCOM, 1996).



Figure 12. 356 Interior
(PACNAVFACENGCOM, 1996).



Figure 13. 357 Torpedo Shop (Service, 1996).

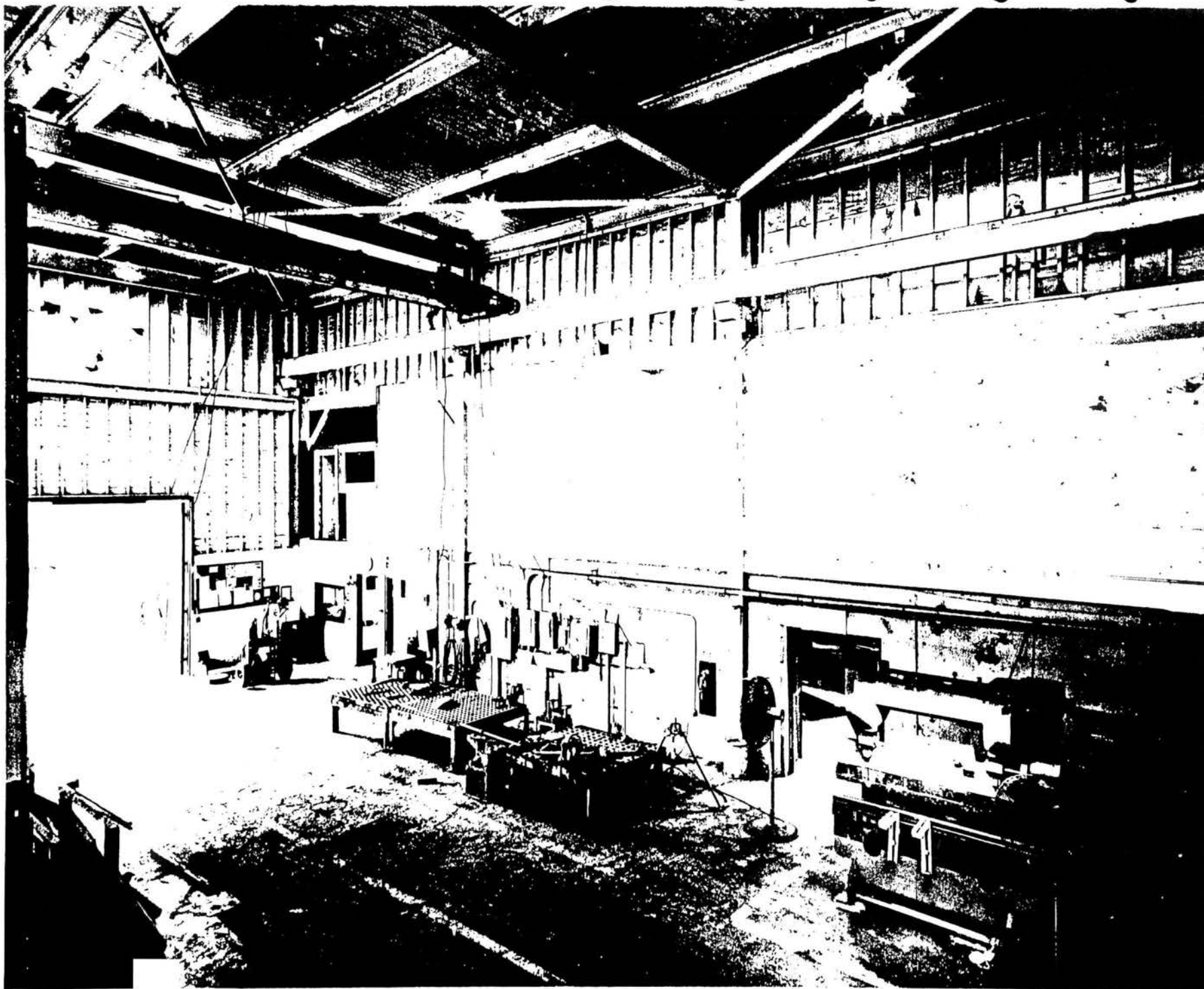


Figure 14. 357 Interior, bomb marks on wall
(PACNAVEACENICOM, 1996)

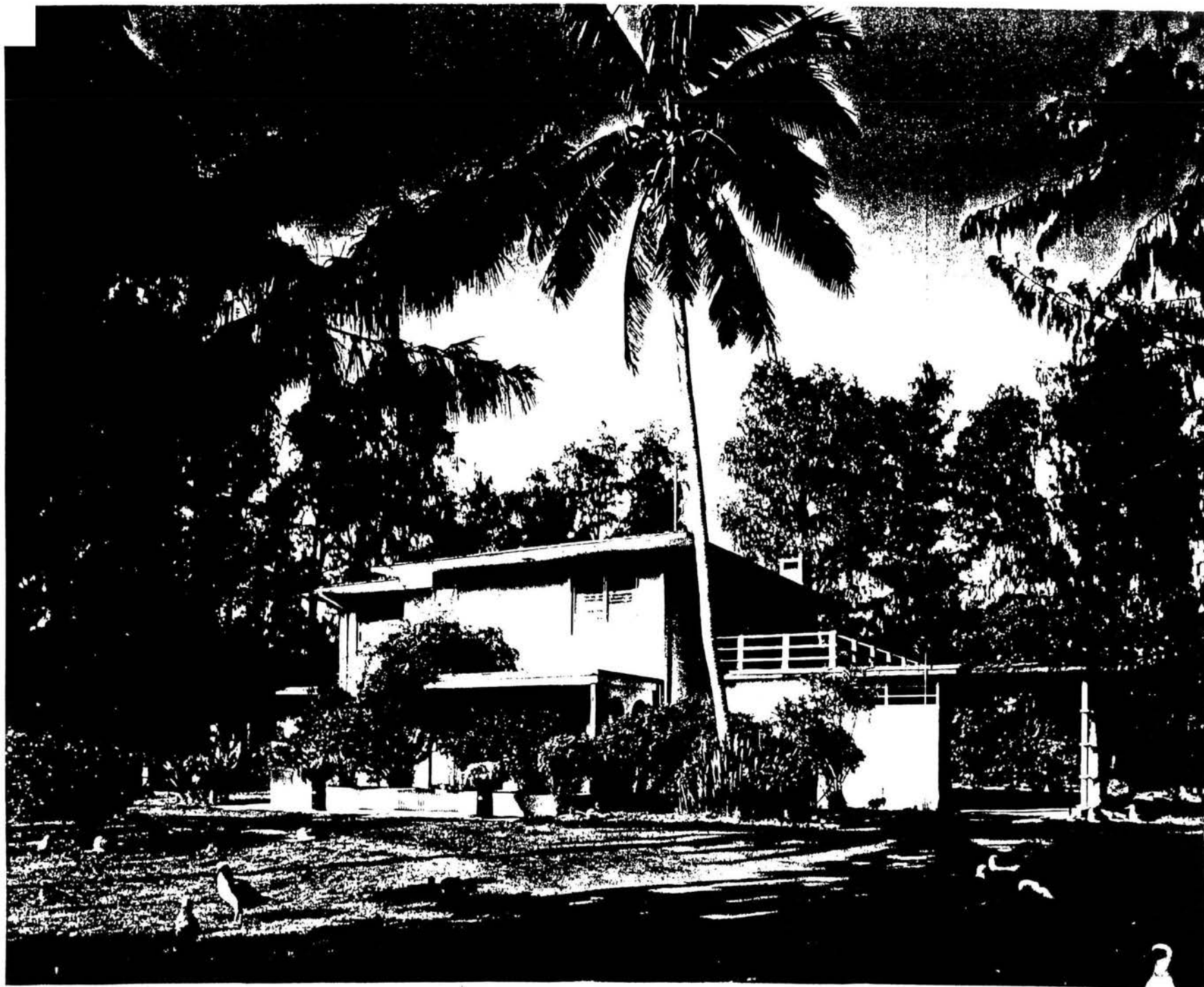


Figure 15. 414 OIC Quarters
(PACNAVFACENGCOM, 1996).



Figure 16. 414 OIC Quarters, Interior
(PACNAVFACENGCOM, 1996).



Figure 17. 415 Officer's Quarters (Service, 1996).



Figure 18. 416 Officer's Quarters (Service, 1996).



Figure 19. 417 Officer's Quarters (Service, 1996).



Figure 20. 418 Officer's Quarters (Service, 1996).



Figure 21. 419 Officer's Quarters (Service, 1996).

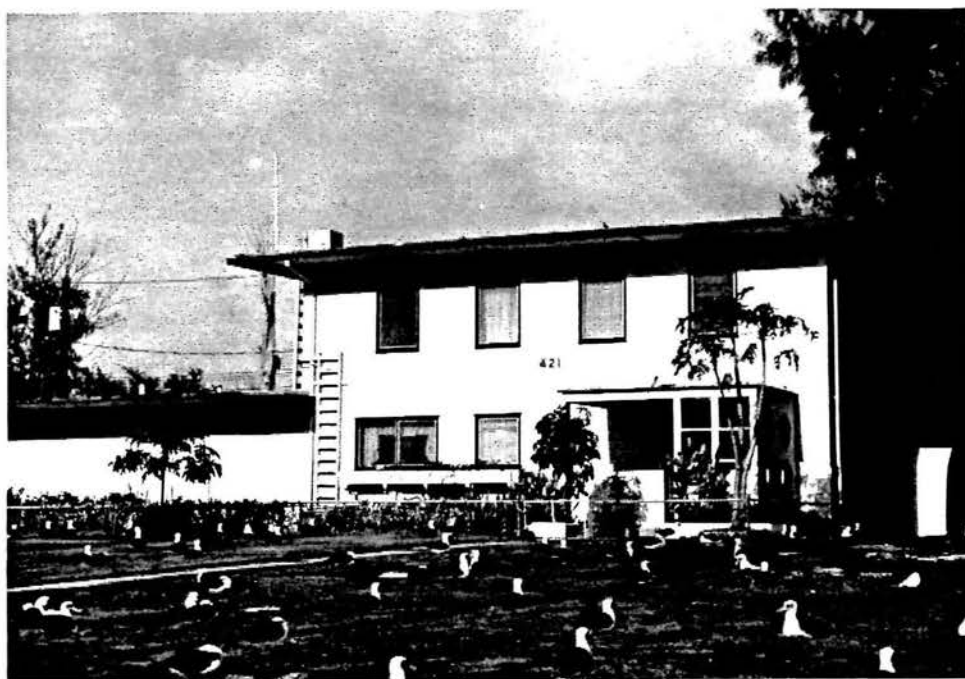


Figure 22. 421 Officer's Quarters (Service, 1996).



Figure 23. 422 Officer's Quarters (Service, 1996).



Figure 24. 423 Officer's Quarters (Service, 1996).



Figure 25. 424 Officer's Quarters (Service, 1996).



Figure 26. 349 Commissary and Cold Storage
(PACNAVEAGENICCOM, 1996)

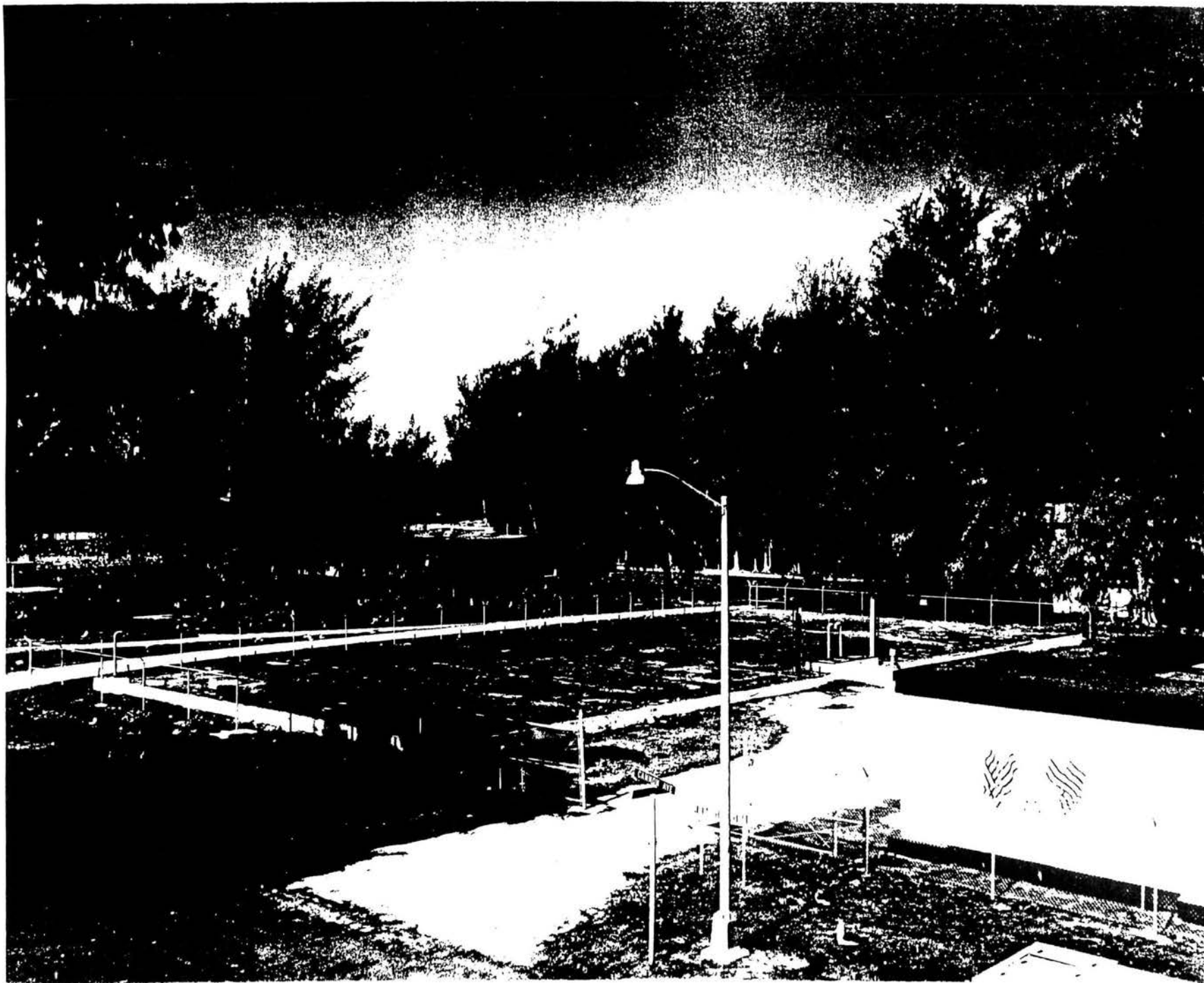


Figure 27. S3126, S3127 Water Reservoirs
(PACNAVI ACTING COM 1996)



Figure 28. 393 Public Works Storehouse



Figure 29. 151 Seaplane Hangar (Service, 1996).



Figure 30. 151 Seaplane Hangar (Service, 1996).

Secure Category

- 31 342 Paint and Oil Storehouse (PACNAVFACENGCOM, 1996).
- 32 363 Torpedo Shop with Parachute Tower (Service, 1996).
- 33 144 Diesel Power Plant and Salt Water Station (PACNAVFACENGCOM, 1996).
- 34 354 Power Plant and Command Center (PACNAVFACENGCOM, 1996).
- 35 521 Command Post (PACNAVFACENGCOM, 1996).
- 36 628 Supervisor's Quarters, Cable Station Building (PACNAVFACENGCOM, 1996).
- 37 619 Office, Cable Station Building (PACNAVFACENGCOM, 1996).
- 38 623 Staff Quarters, Cable Station Building (PACNAVFACENGCOM, 1996).
- 39 623 Staff Quarters, Cable Station Building (PACNAVFACENGCOM, 1996).
- 40 643 Mess Hall/Recreation, Cable Station Building (PACNAVFACENGCOM, 1996).
- 41 S6194 ARMCO Hut (PACNAVFACENGCOM, 1996).
- 42 631 Radar Building (PACNAVFACENGCOM, 1996).
- 43 S956 Underground Shelter (PACNAVFACENGCOM, 1996).



Figure 31. 342 Paint and Oil Storehouse



Figure 32. 363 Torpedo Shop with Parachute Tower (Service, 1996).

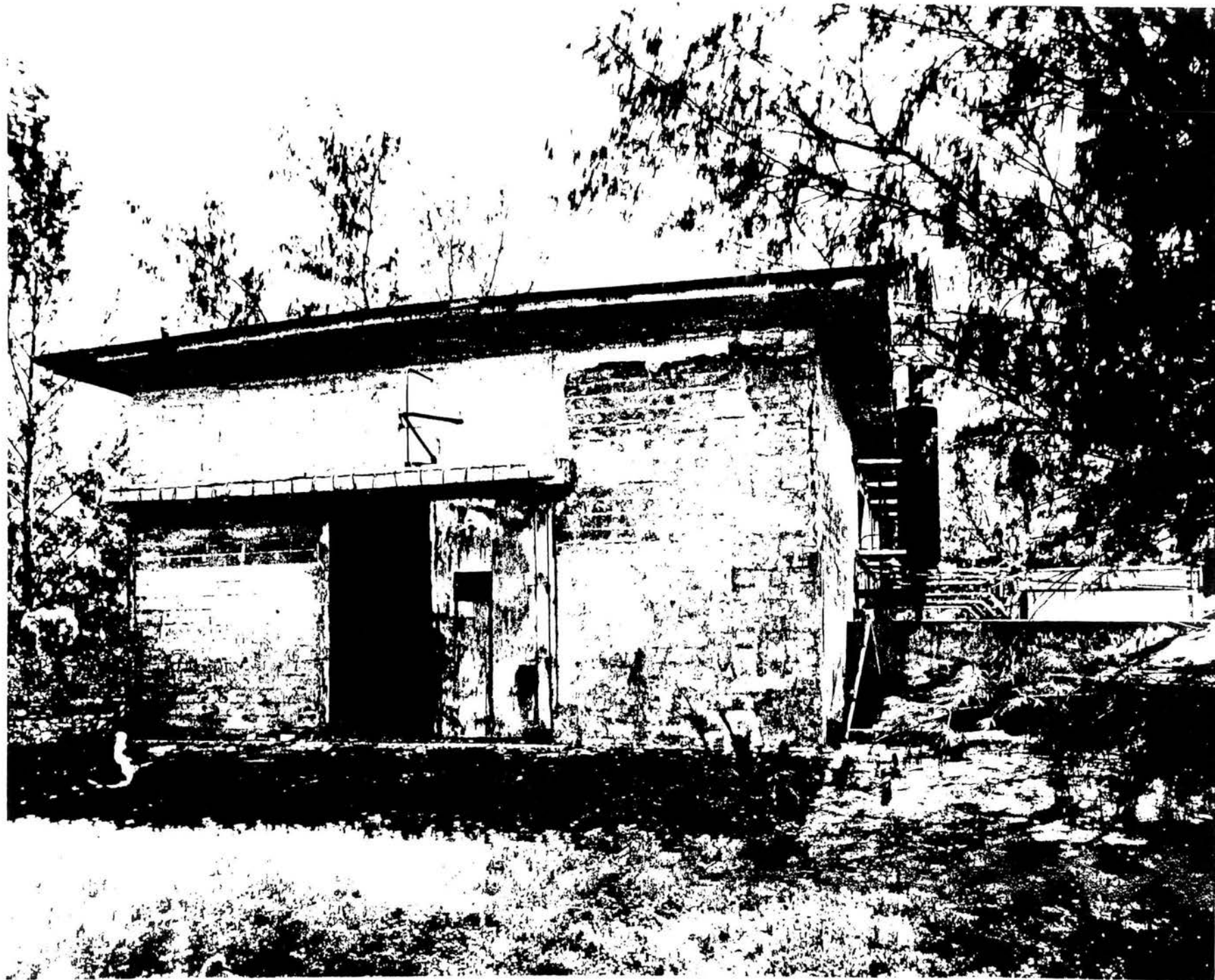


Figure 33. 144 Diesel Power Plant and Salt Water
Station
(PACNAVIAC.TNG.COM, 1996).



Figure 34. 354 Power Plant and Command Center
(PACNAVFACENGCOM, 1996).



Figure 35. 521 Command Post
(PACNAVFACENGCOM, 1996).

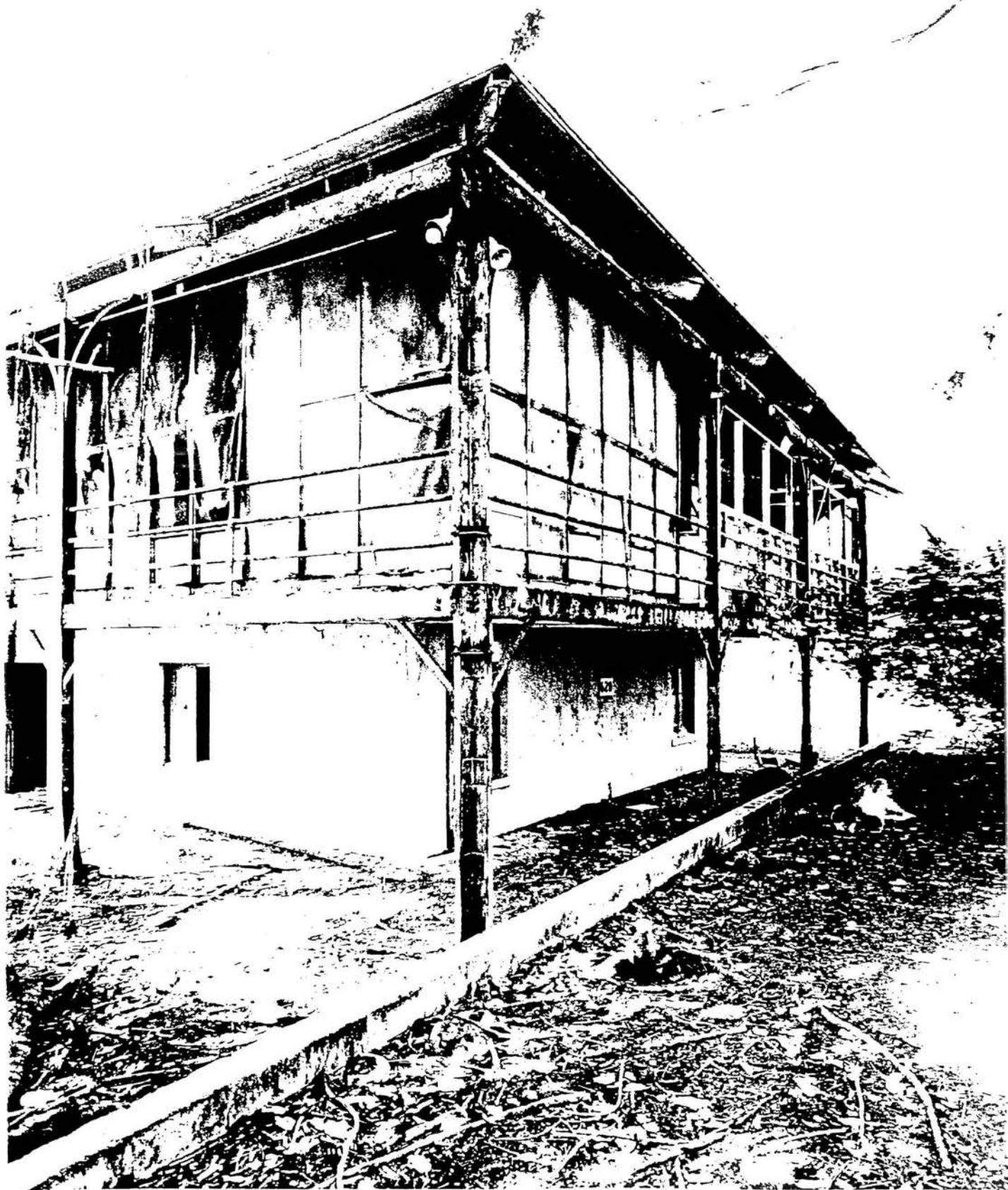


Figure 36. 628 Supervisor's Quarters,
Cable Station Building
(PACNAVFACENGCOM, 1996).

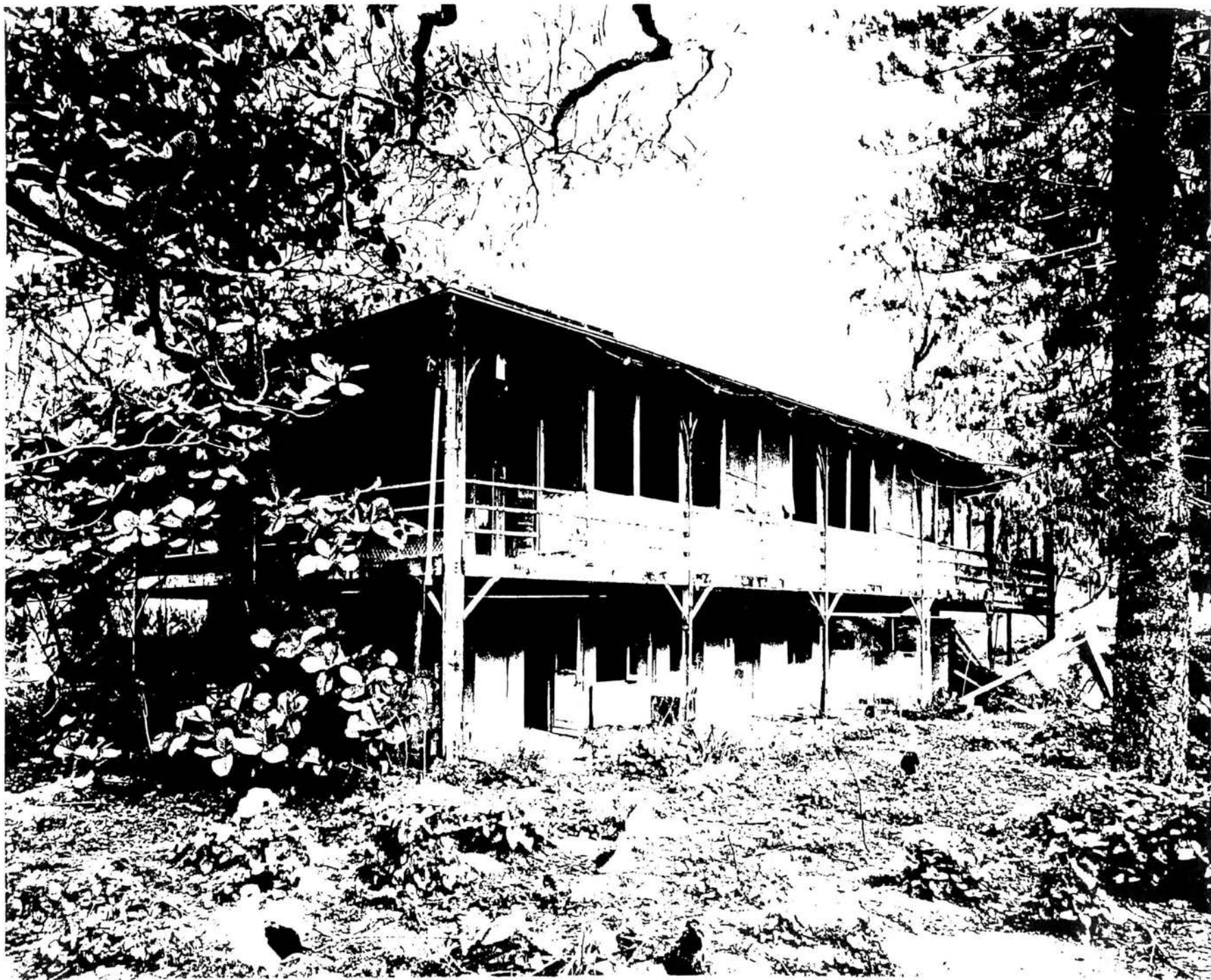


Figure 37. 619 Office,
Cable Station Building
(PACNAVEACENIC.COM, 1996)



Figure 38. 623 Staff Quarters,
Cable Station Building
(PACNAVFACENGCOM, 1996).



Figure 39. 623 Staff Quarters,
Cable Station Building
(PACNAVI ACTING COM, 1996).



Figure 40. 643 Mess Hall/Recreation,
Cable Station Building
(PACNAVIACINCOM, 1996).



Figure 41. S6194 ARMCO Hut
(PACNAVFACENGCOM, 1996).

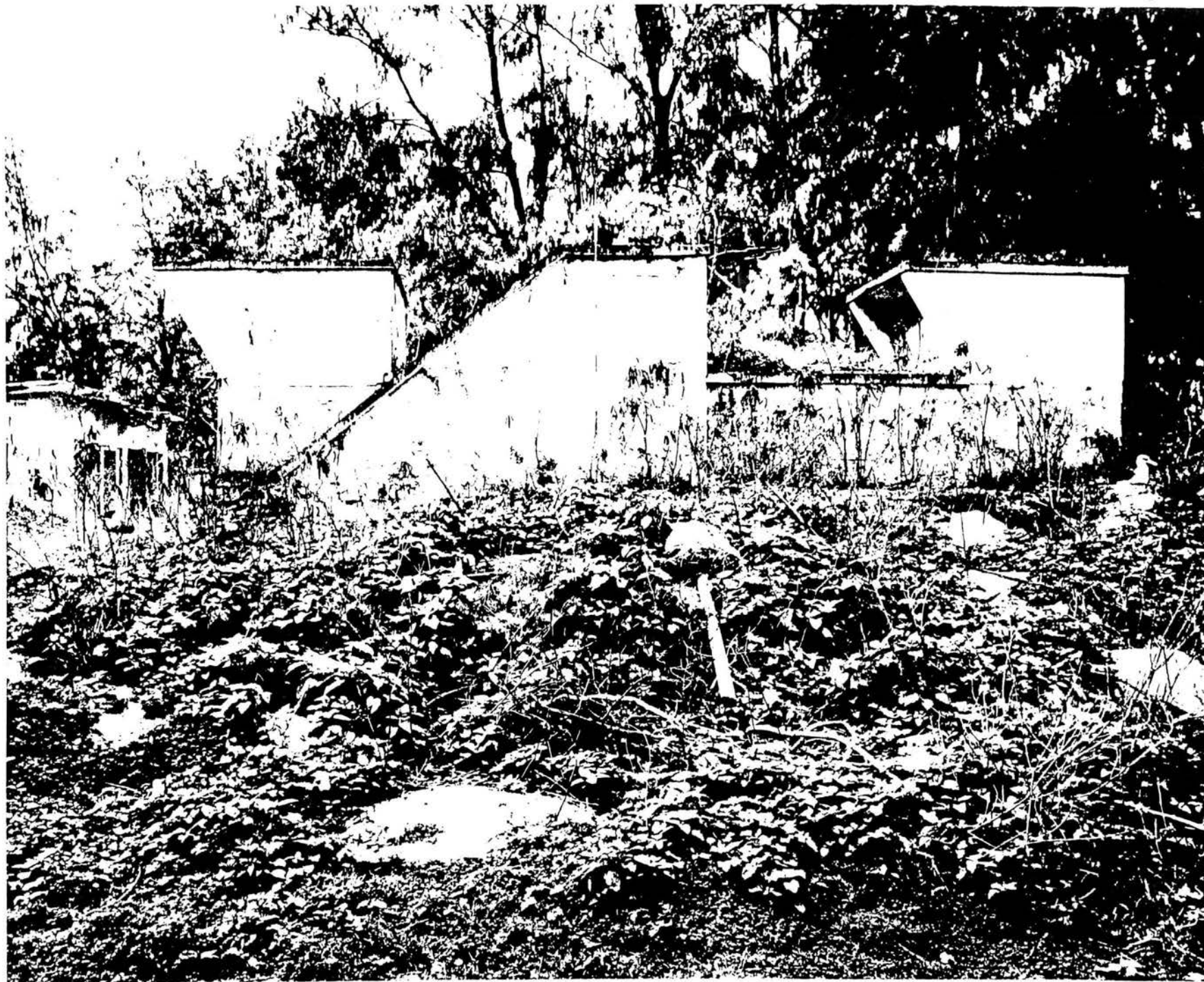


Figure 42. 631 Radar Building
(PACNAVFACENGCOM, 1996).

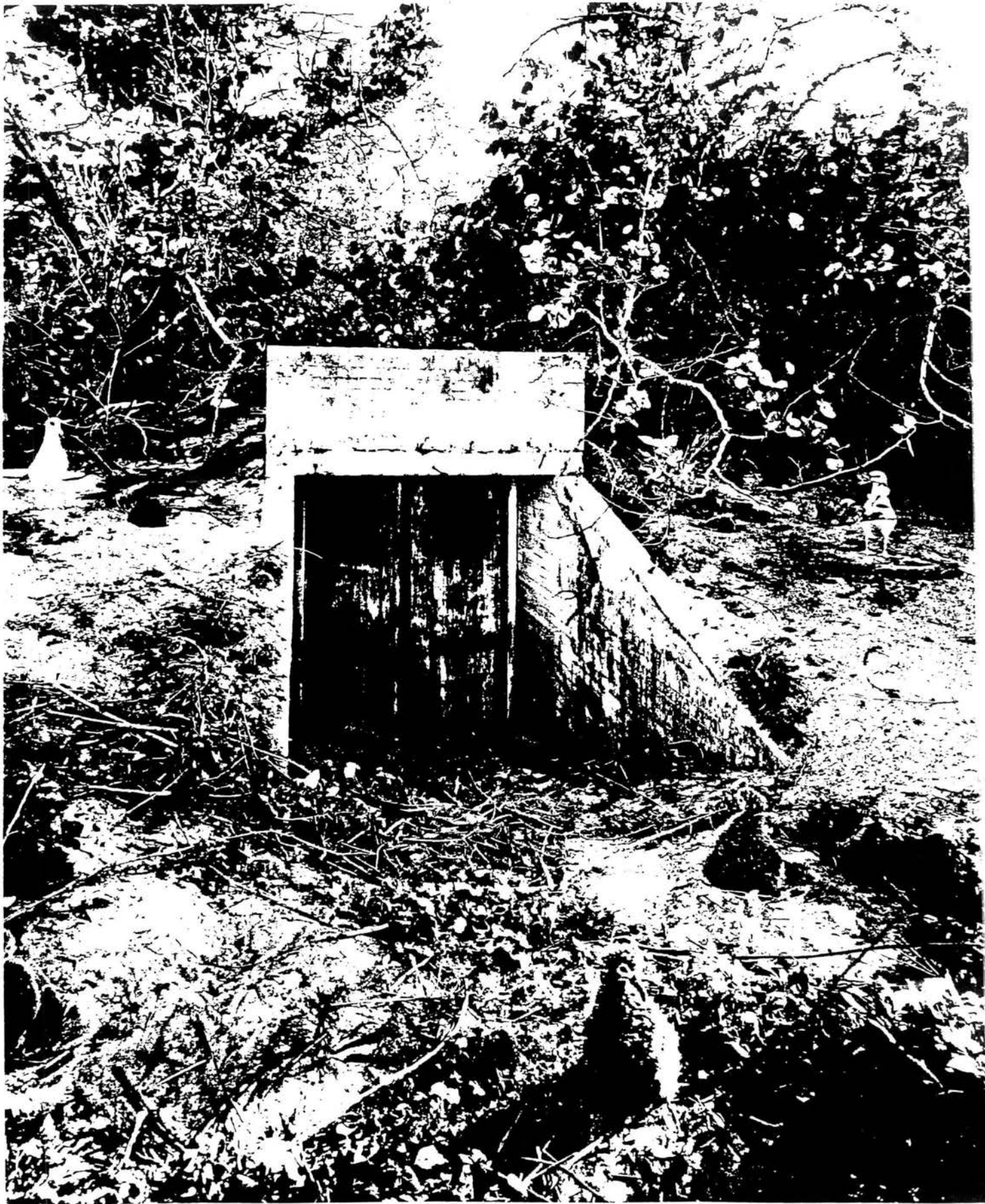


Figure 43. S956 Underground Shelter
(PACNAVFACENGCOM, 1996).

Leave As-Is Category

- 44 626 Servants Quarters, Cable Station Building (PACNAVFACENGCOM, 1996).
- 45 S2123 Midway Memorial Plaque (PACNAVFACENGCOM, 1996).
- 46 S2409 Two 5-inch Naval guns, Midway Memorial (PACNAVFACENGCOM, 1996).
- 47 S9132 Seaplane Ramp (PACNAVFACENGCOM, 1996).
- 48 S-1 3[5]-inch Naval Gun Battery, Bauer Road (PACNAVFACENGCOM, 1996).
- 49 S-2 Battery D (PACNAVFACENGCOM, 1996).
- 50 S-3 Pillbox (PACNAVFACENGCOM, 1996).
- 51 S-4 Cemetery, Bauer Road (PACNAVFACENGCOM, 1996).
- 52 S-5 Japanese Memorials (PACNAVFACENGCOM, 1996).
- 53 S-6 Pillbox (PACNAVFACENGCOM, 1996).
- 54 6-24 Eastern Island Runway (PACNAVFACENGCOM, 1996).
- 55 12-30 Eastern Island Runway (PACNAVFACENGCOM, 1996).
- 56 3-21 Eastern Island Runway (PACNAVFACENGCOM, 1996).
- 57 E-1 3-inch Anti-Aircraft Gun (PACNAVFACENGCOM, 1996).
- 58 E-2 Underground Bunker (PACNAVFACENGCOM, 1996).
- 59 E-6 Revetments (PACNAVFACENGCOM, 1996).
- 60 E-7 Possible Gun Position (PACNAVFACENGCOM, 1996).



Figure 44. 626 Servants Quarters,
Cable Station Building
(PACNAVFACENGCOM, 1996).

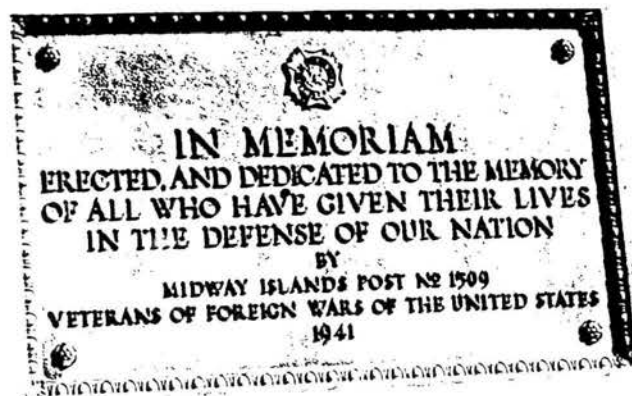


Figure 45. S2123 Midway Memorial Plaque
(PACNAVFACENGCOM, 1996).

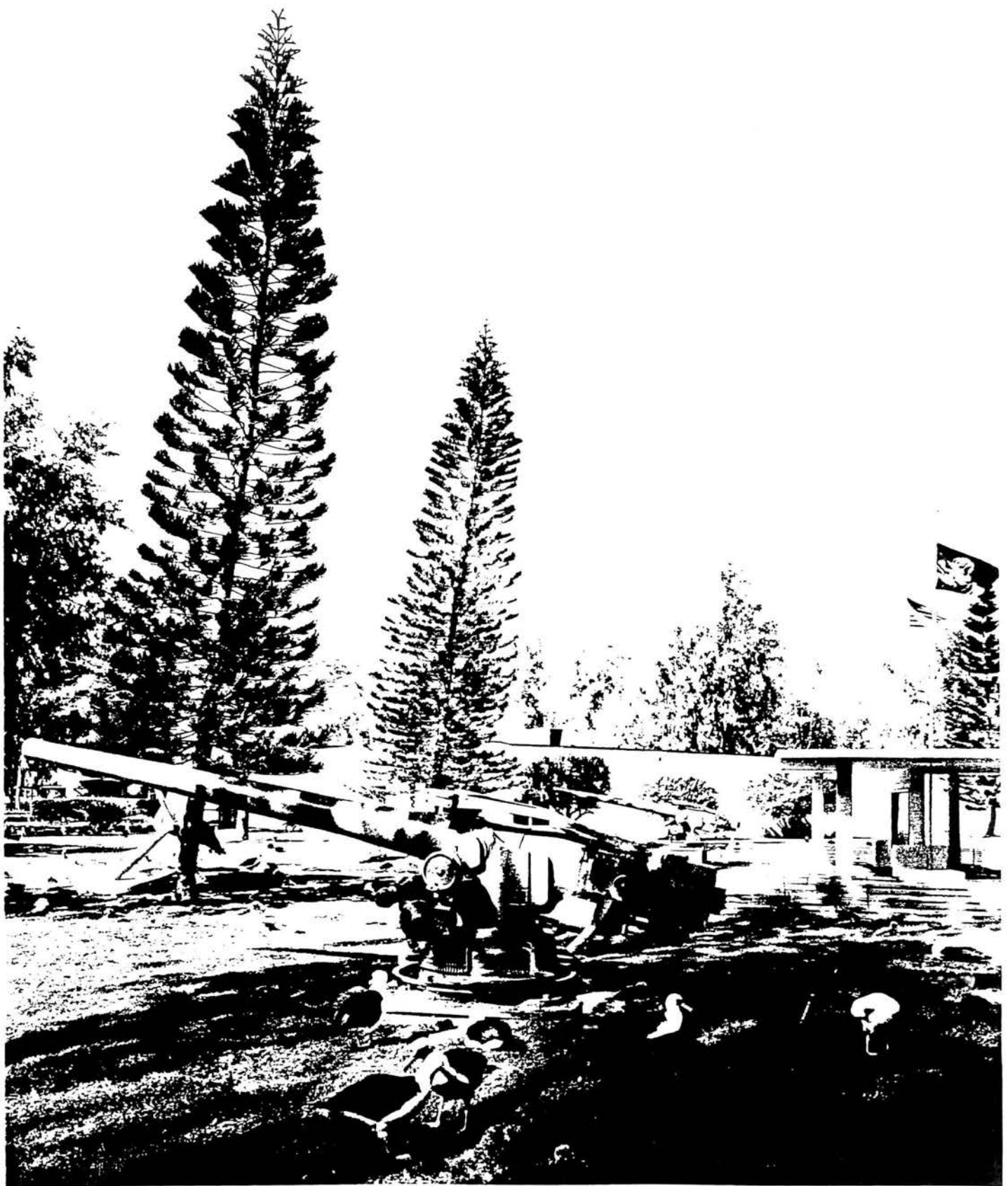


Figure 46. S2409 Two 5-inch Naval guns,
Midway Memorial
(PACNAVFACENGCOM, 1996).



Figure 47. S9132 Seaplane Ramp
(PACNAVFACENGCOM, 1996).



Figure 48. S-1 3[5]-inch Naval gun battery,
Bauer Road

U.S. Navy
Naval Gun Battery
S-1 3[5]-inch Naval Gun Battery
Bauer Road



Figure 49. S-2 Battery D
(PACNAVIACINCOM, 1996).



Figure 50. S-3 Pillbox
(PACNAVFACJNGCOM, 1996).



Figure 51. S-4 Cemetery, Bauer Road
(PACNAVFACENGCOM, 1996).

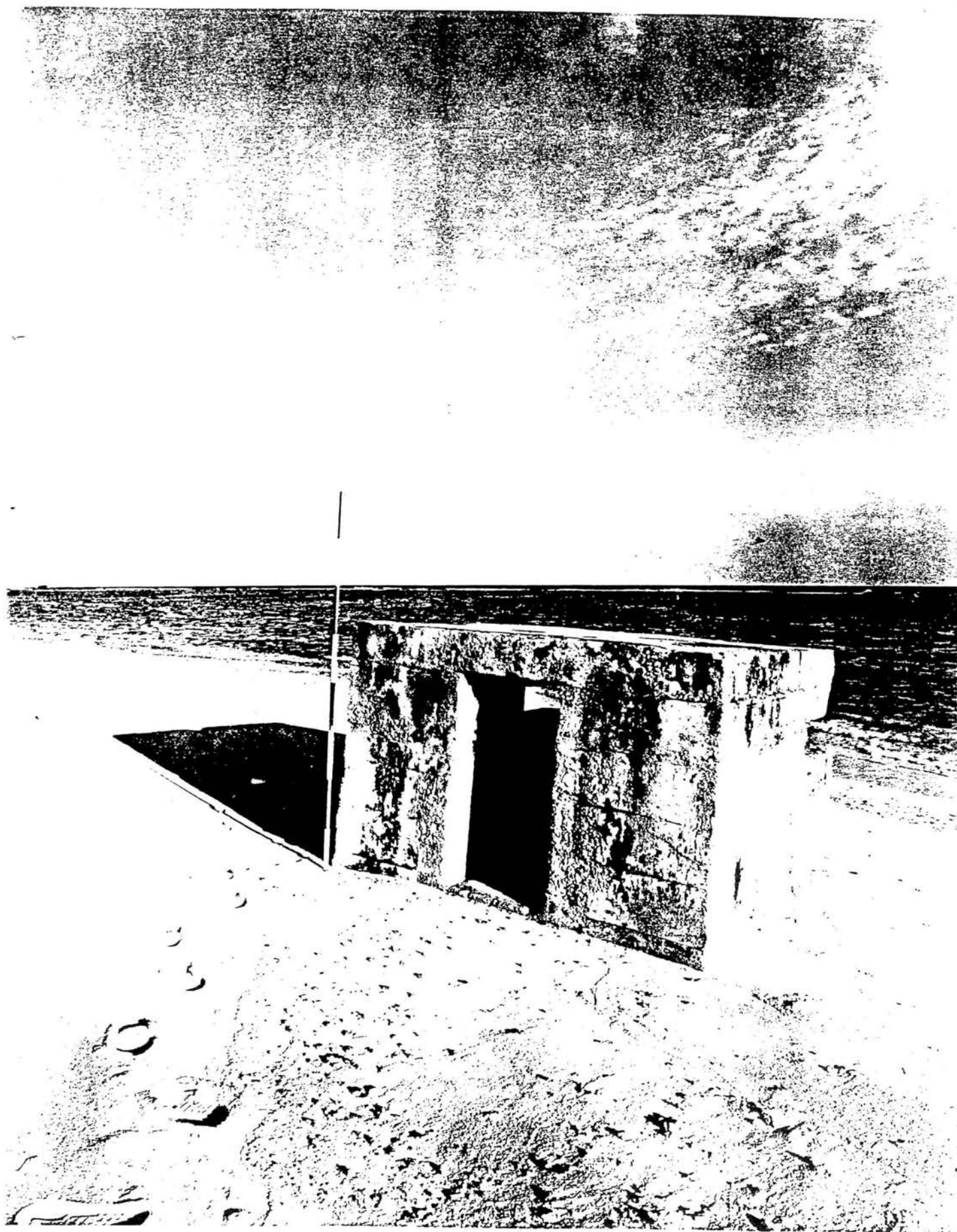


Figure 53. S-6 Pillbox
(PACNAVFACENGCOM, 1996).

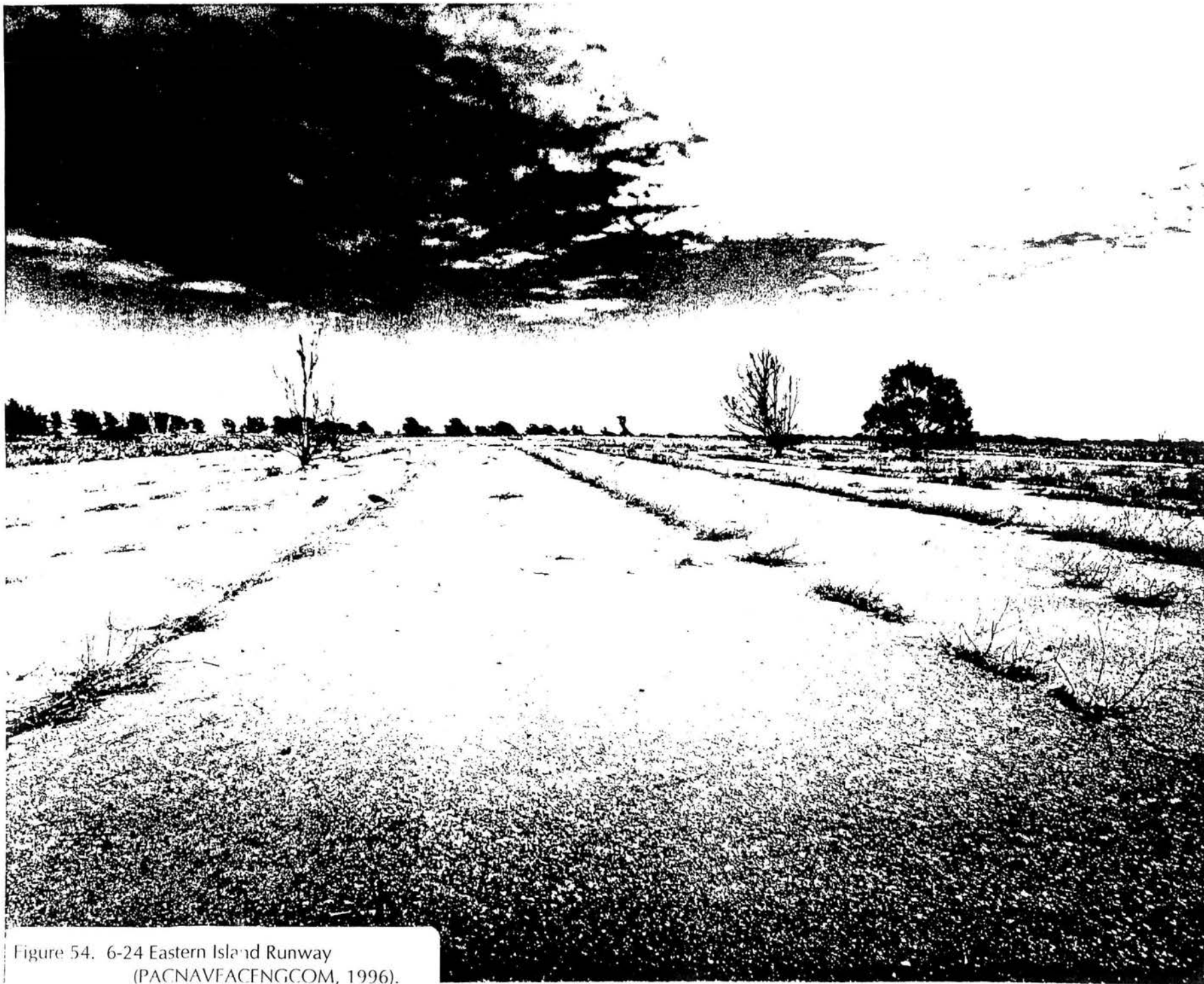


Figure 54. 6-24 Eastern Island Runway
(PACNAVFACENGCOM, 1996).



Figure 55. 12-30 Eastern Island Runway
(PACNAVFACENGCOM, 1996).



Figure 56. 3-21 Eastern Island Runway
(PACNAVFACENGCOM, 1996).



Figure 57. E-1 3-inch Anti-Aircraft Gun
(PACNAVFACENGCOM, 1996).

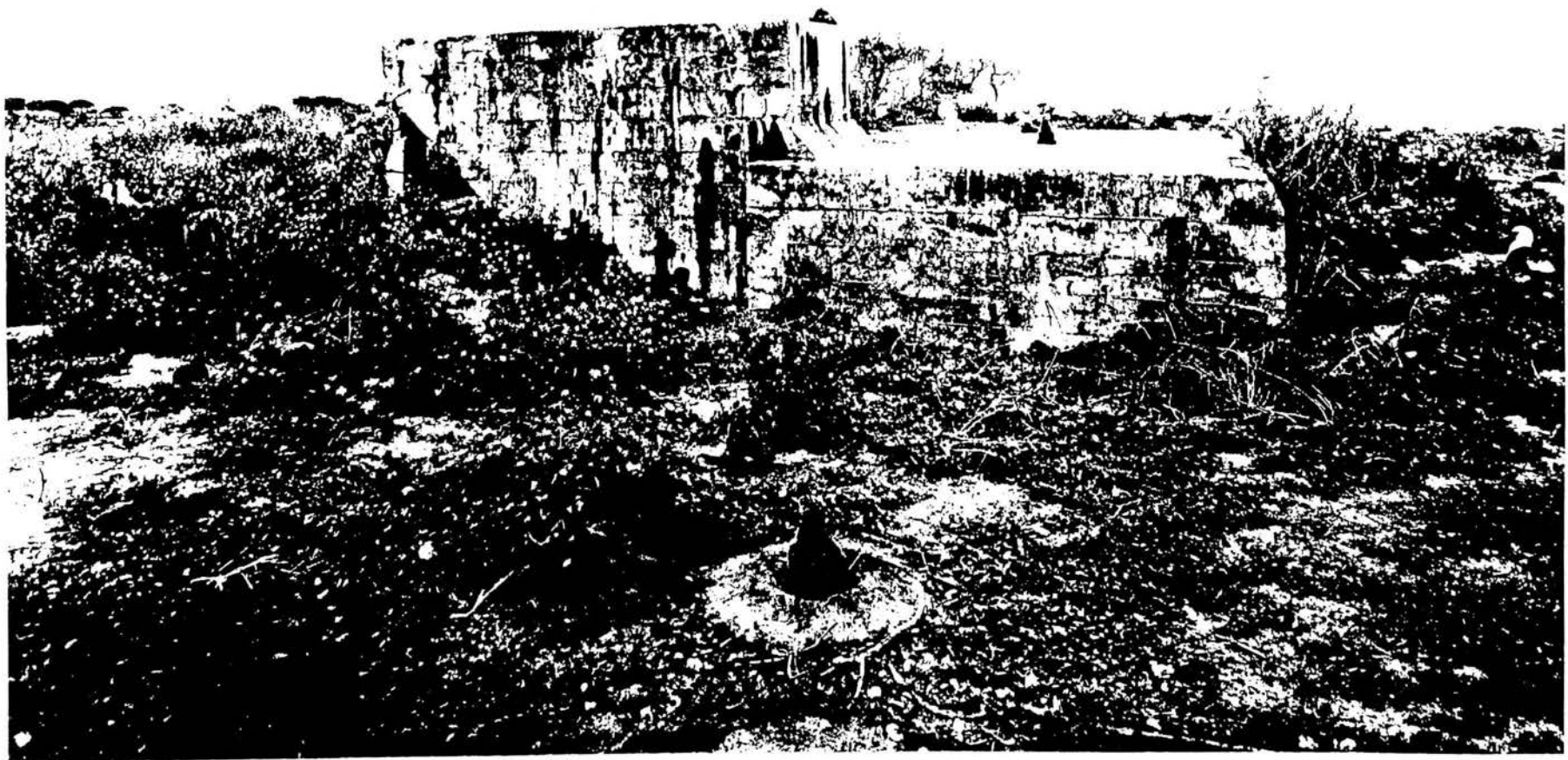


Figure 58. E-2 Underground Bunker
(PACNAVFACENGCOM, 1996).



Figure 59. E-6 Revetments
(PACNAVFACENGCOM, 1996).

E-7
EASTERN ISL.



Figure 60. E-7 Possible Gun Position
(PACNAVFACENGCOM, 1996).

MIDWAY ATOLL National Wildlife Refuge
Historic Properties Treatment
Annual Report: 1996

Fill Category

- 61 S-7. Metal Pillbox (PACNAVFACENGCOM, 1996).
- 62 S7124 ARMCO Hut (PACNAVFACENGCOM, 1996).
- 63 E-3. Metal Pillbox (PACNAVFACENGCOM, 1996).

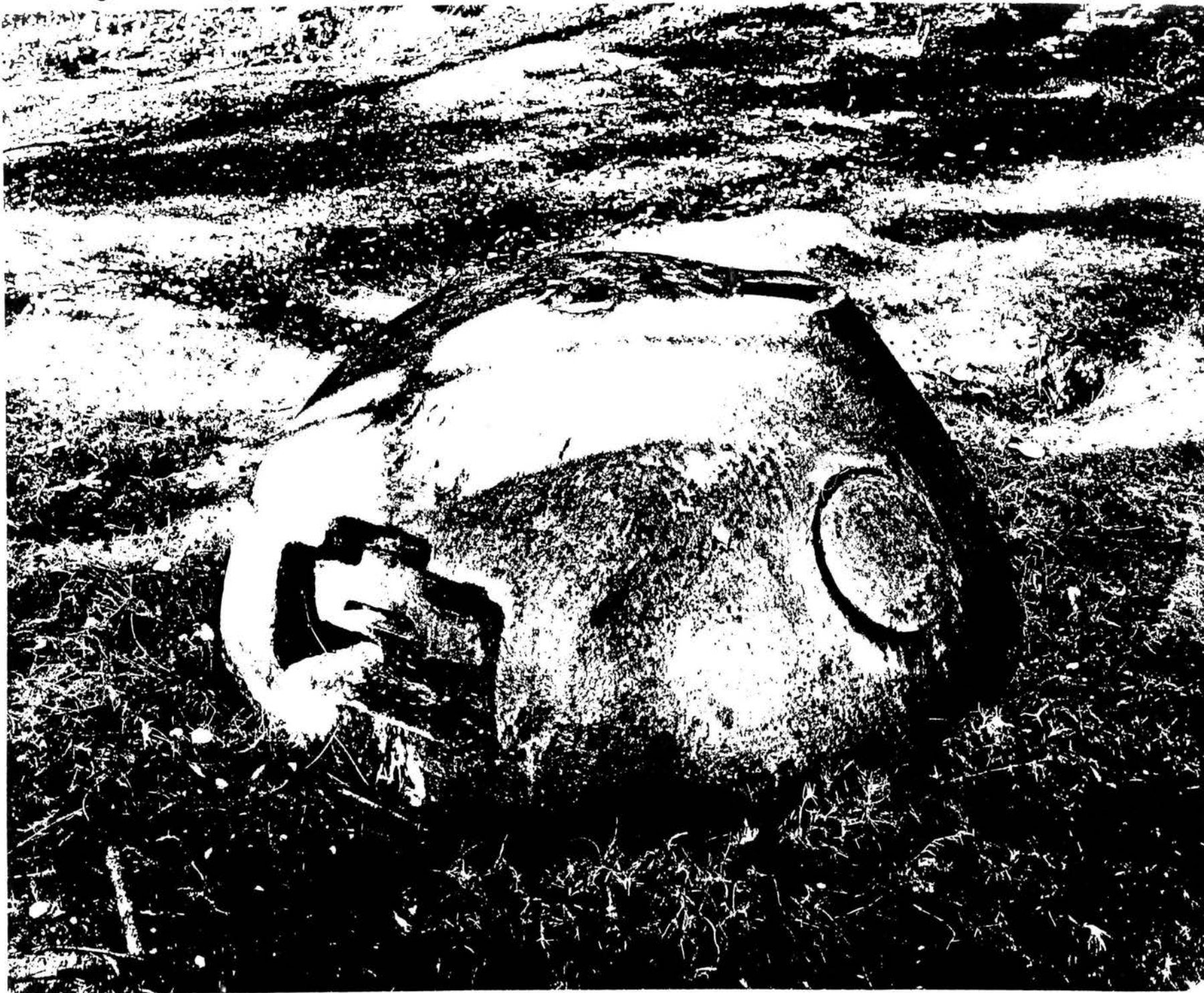


Figure 61. S-7 Metal Pillbox
(PACNAVFACENGCOM, 1996).



Figure 62. S7124 ARMCO Hut
(PACNAVFACENGCOM, 1996).



Figure 63. E-3 Metal Pillbox
(PACNAVFACENGCOM, 1996).

MIDWAY ATOLL National Wildlife Refuge
Historic Properties Treatment
Annual Report: 1996

Relocate Category

- 64 S-8 Torpedo and Bomb (PACNAVFACENGCOM, 1996).
- 65 S-8 Torpedo and Bomb (PACNAVFACENGCOM, 1996).
- 66 E-5 Submarine Net and Floaters (PACNAVFACENGCOM, 1996).
- 67 E-4 Metal Pillbox (PACNAVFACENGCOM, 1996).

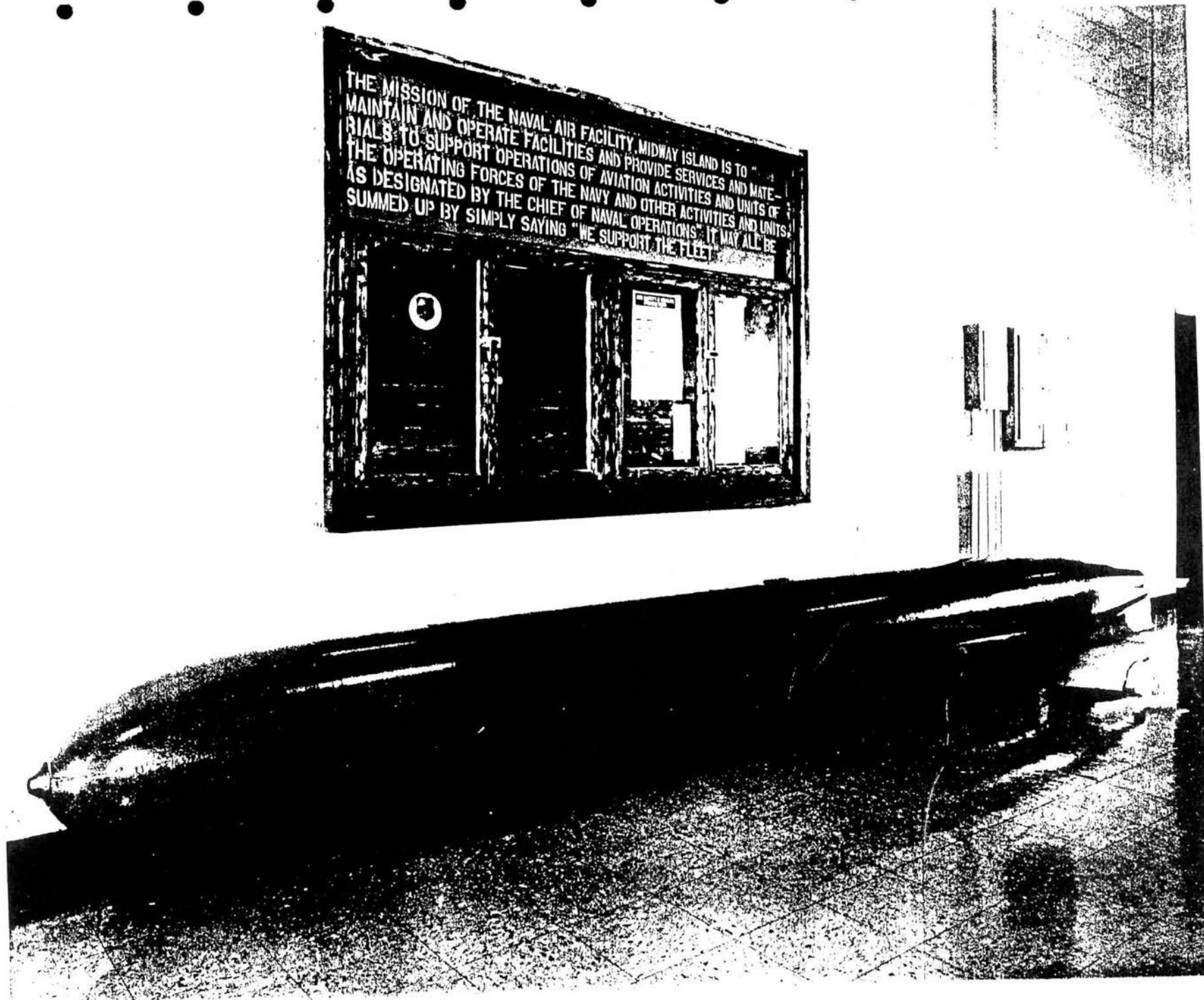


Figure 64. S-8 Torpedo and Bomb
(PACNAVFACFNGCOM, 1996).

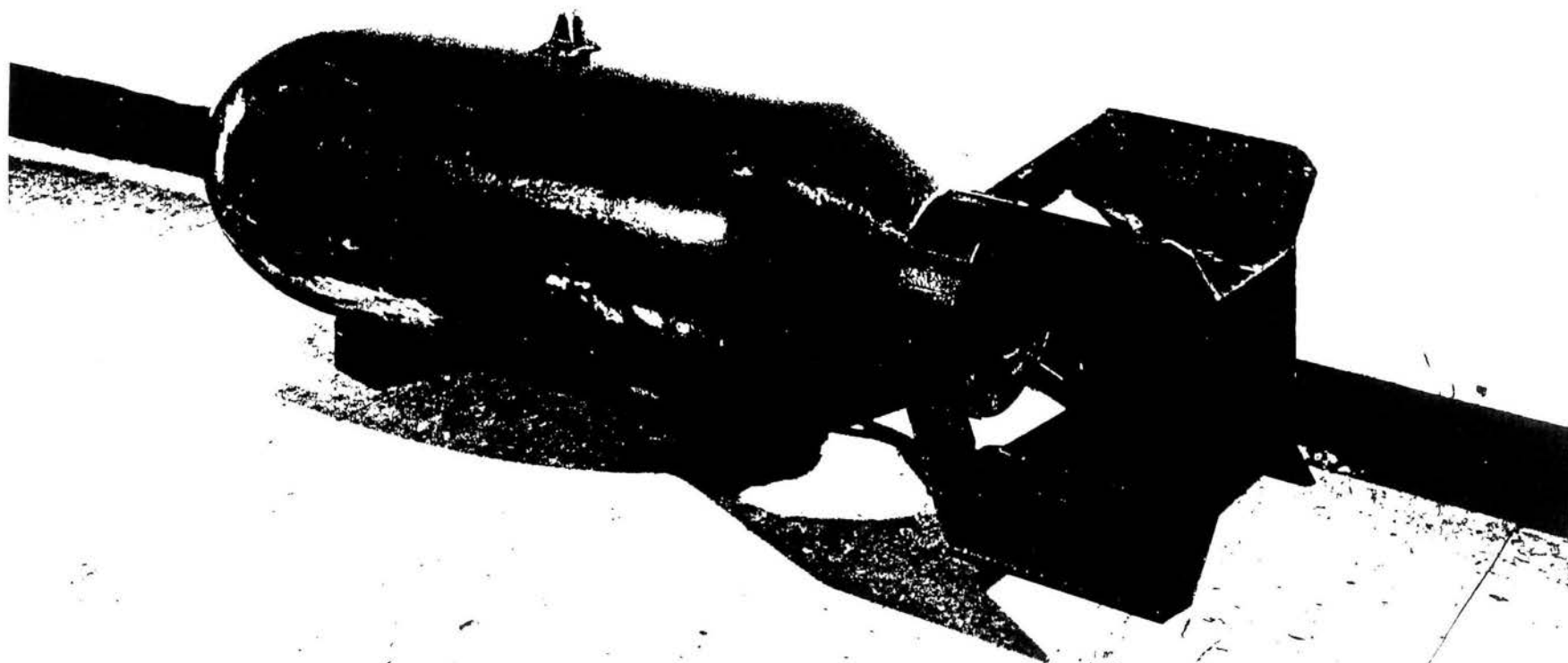


Figure 65. S-8 Torpedo and Bomb
(PACNAVFACNGCOM, 1996).

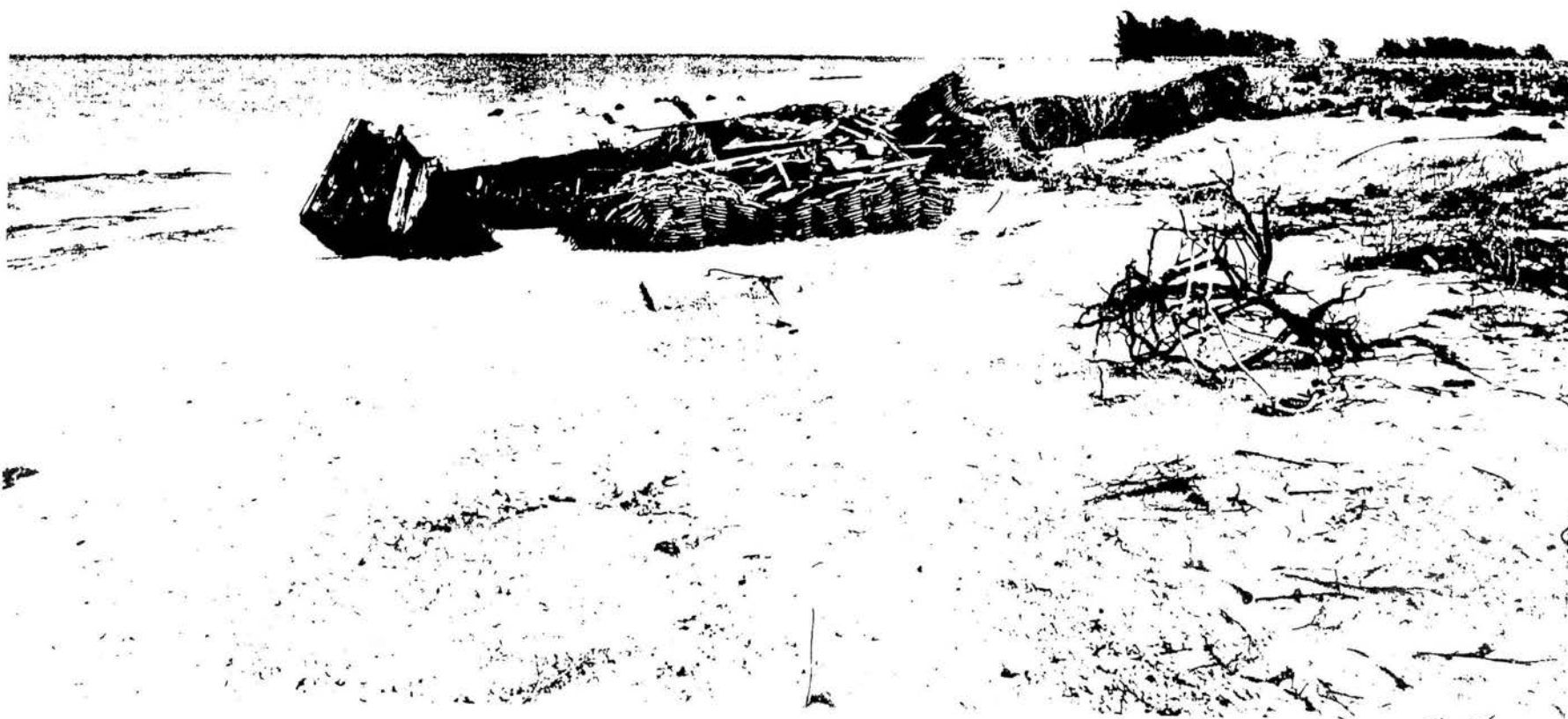


Figure 66. E-5 Submarine Net and Floaters
(PACNAVIACENGCOM, 1996).



Figure 67. E-4 Metal Pillbox
(PACNAVFACENGCOM, 1996).